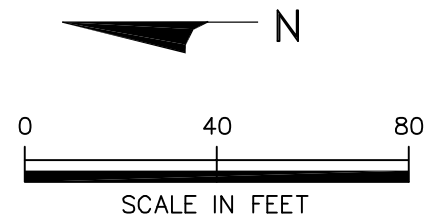
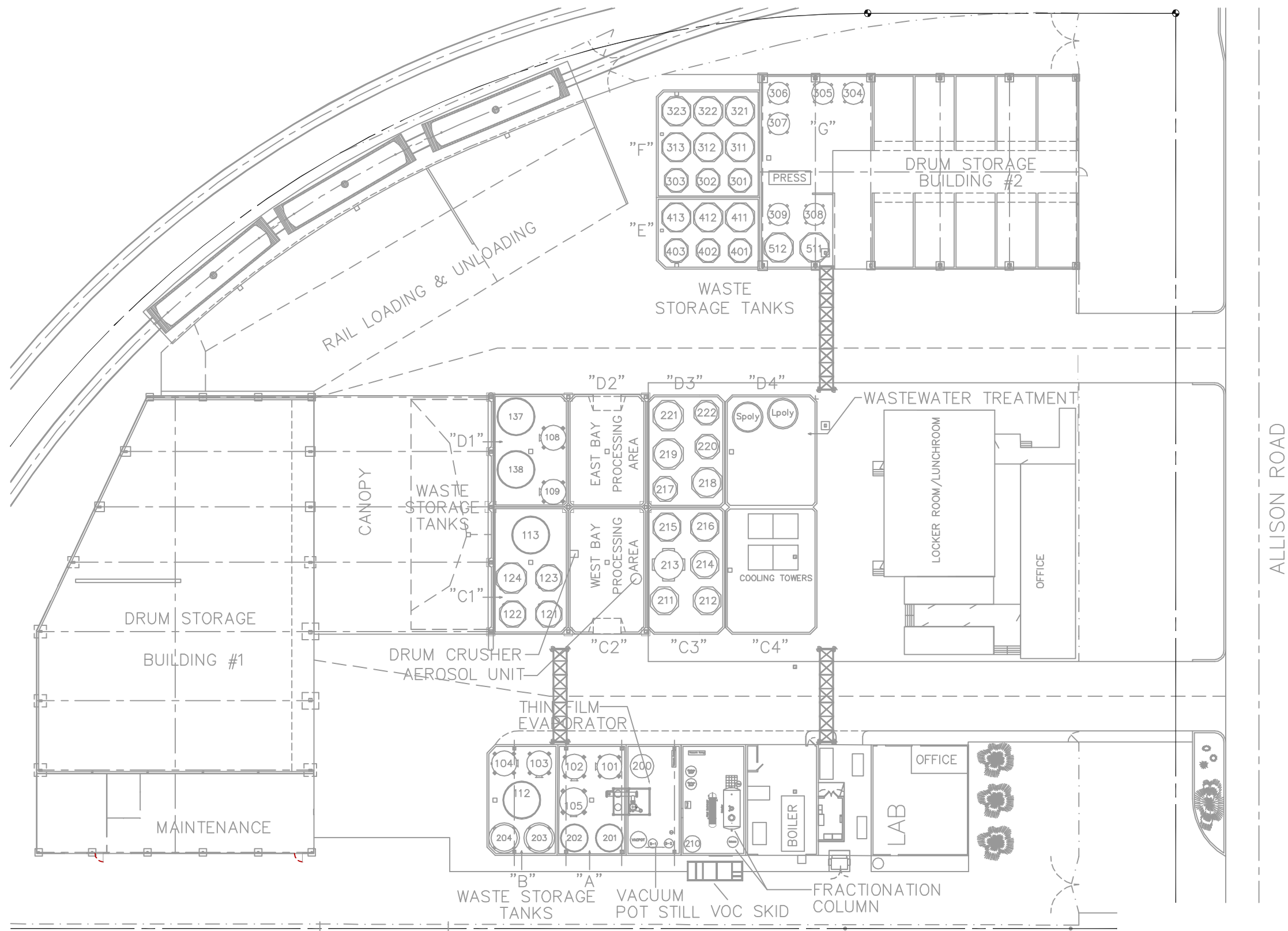


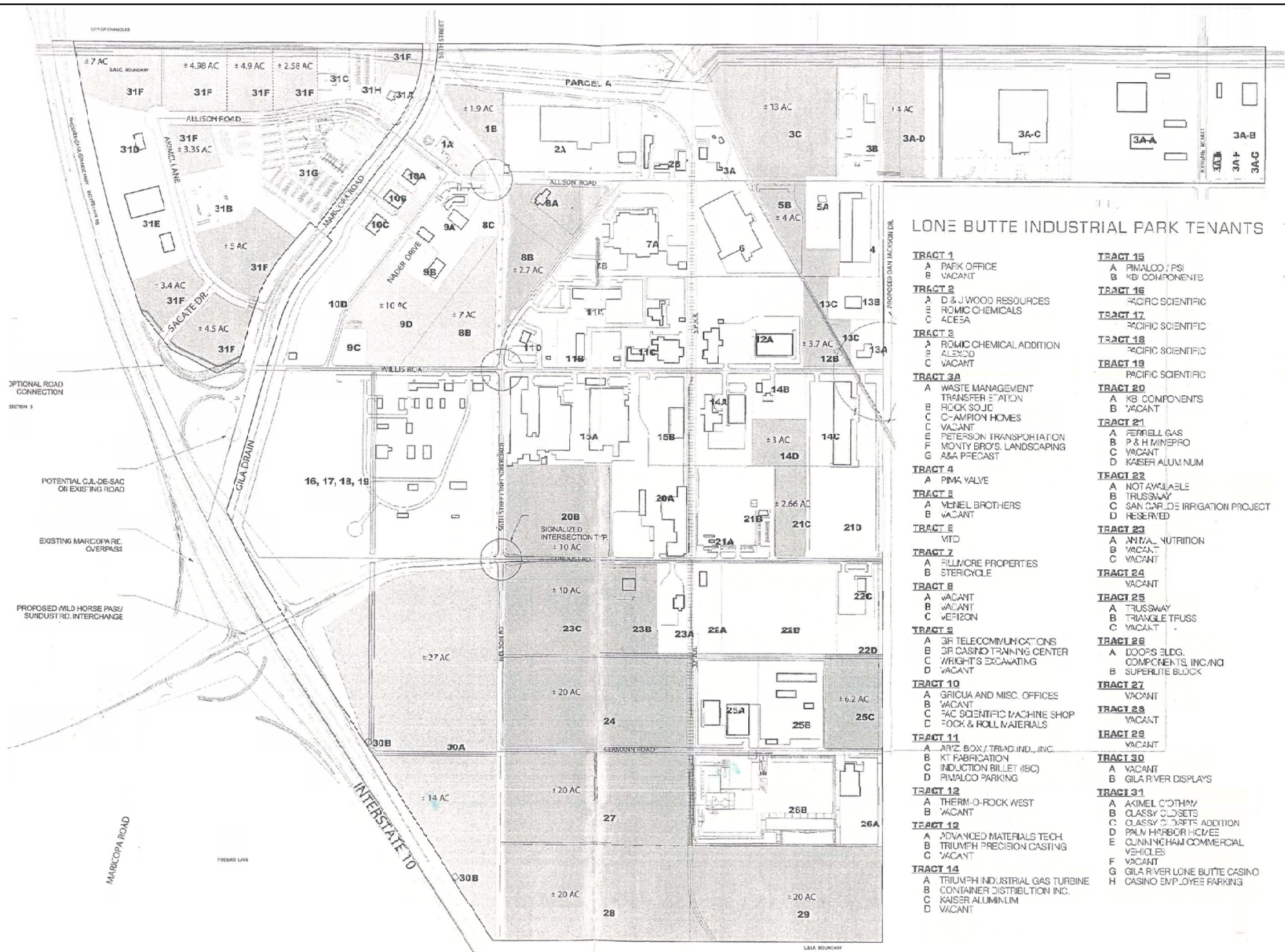
US EPA ARCHIVE DOCUMENT

**FIGURES**



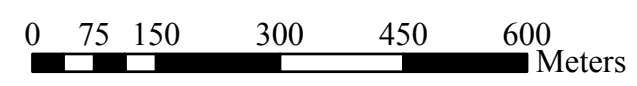


**Figure 2.3**  
**Layout of Lone Butte Industrial Park**  
**Romic Environmental Technologies Corporation**  
**Chandler, Arizona**

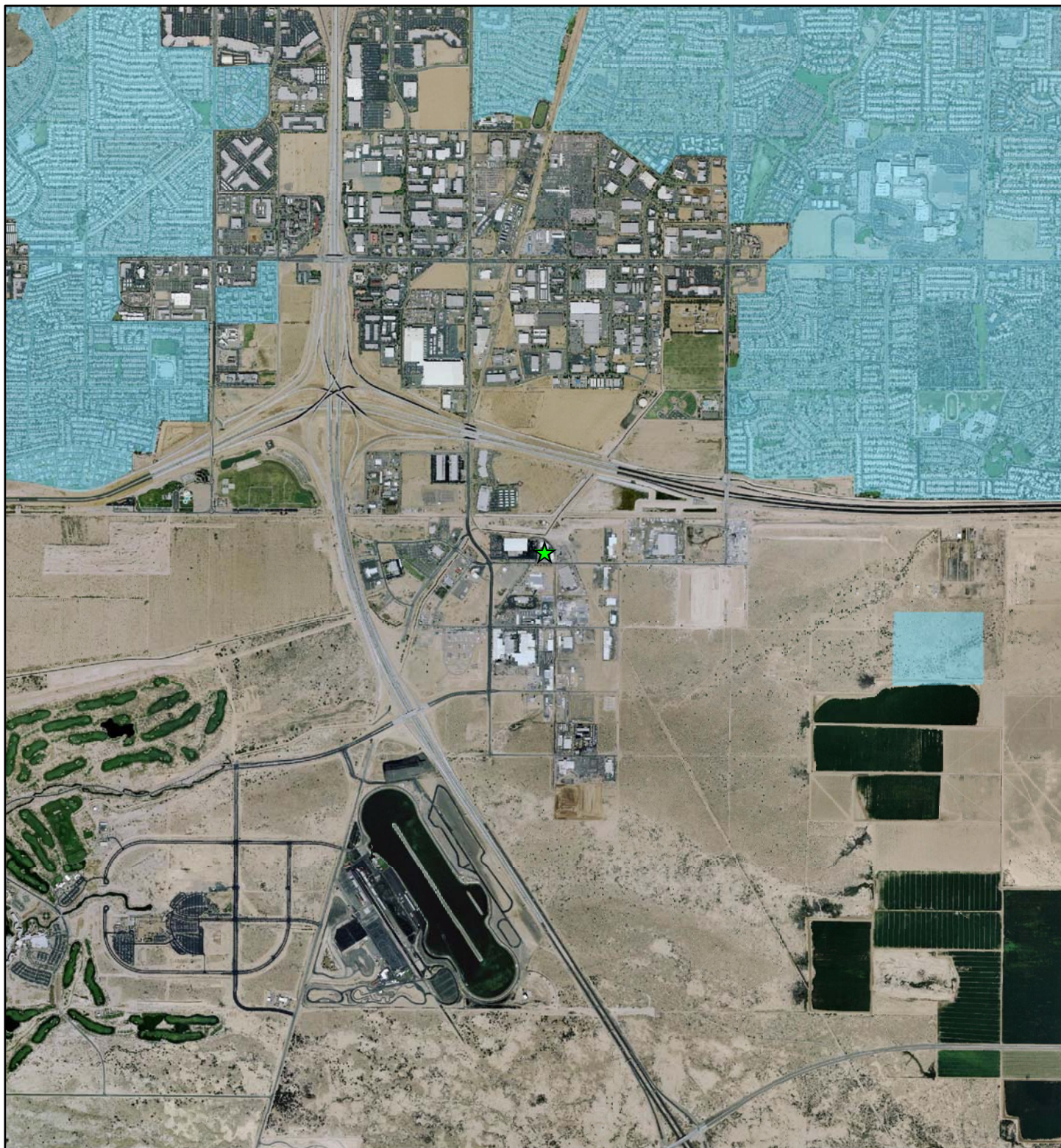


**LONE BUTTE INDUSTRIAL PARK TENANTS**

- TRACT 1**  
A PARK OFFICE  
B VACANT
- TRACT 2**  
A D & J WOOD RESOURCES  
B ROMIC CHEMICALS  
C ACESA
- TRACT 3**  
A ROMIC CHEMICAL ADDITION  
B ALEXCO  
C VACANT
- TRACT 3A**  
A WASTE MANAGEMENT  
TRANSFER STATION  
B ROCK SOLID  
C C-AMPION HOMES  
D VACANT  
E PETERSON TRANSPORTATION  
F MONTY BROS. LANDSCAPING  
G A&A PRECAST
- TRACT 4**  
A PINK VALVE
- TRACT 5**  
A VENEL BROTHERS  
B VACANT
- TRACT 6**  
A MTD
- TRACT 7**  
A FILLMORE PROPERTIES  
B STERICYCLE
- TRACT 8**  
A VACANT  
B VACANT  
C VERIZON
- TRACT 9**  
A 3R TELECOMMUNICATIONS  
B 3R CASINO TRAINING CENTER  
C WRIGHT'S EXCAVATING  
D VACANT
- TRACT 10**  
A GRICUA AND MISC. OFFICES  
B VACANT  
C PAC SCIENTIFIC MACHINE SHOP  
D ROCK & ROLL MATERIALS
- TRACT 11**  
A ARIZ. BOX / TRIAD IND., INC.  
B KT FABRICATION  
C INDUCTION BILLET (IBC)  
D PINALCO PARKING
- TRACT 12**  
A THERM-O-ROCK WEST  
B VACANT
- TRACT 13**  
A ADVANCED MATERIALS TECH.  
B TRIUMPH PRECISION CASTING  
C VACANT
- TRACT 14**  
A TRIUMPH INDUSTRIAL GAS TURBINE  
B CONTAINER DISTRIBUTION INC.  
C KAISER ALUMINUM  
D VACANT
- TRACT 15**  
A PINALCO / PSI  
B KB COMPONENTS
- TRACT 16**  
PACIFIC SCIENTIFIC
- TRACT 17**  
PACIFIC SCIENTIFIC
- TRACT 18**  
PACIFIC SCIENTIFIC
- TRACT 19**  
PACIFIC SCIENTIFIC
- TRACT 20**  
A KB COMPONENTS  
B VACANT
- TRACT 21**  
A FERRELL GAS  
B P & H MINEPRO  
C VACANT  
D KAISER ALUMINUM
- TRACT 22**  
A NOT AVAILABLE  
B TRUSSWAY  
C SAN CARLOS IRRIGATION PROJECT  
D RESERVED
- TRACT 23**  
A ANIMAL NUTRITION  
B VACANT  
C VACANT
- TRACT 24**  
VACANT
- TRACT 25**  
A TRUSSWAY  
B TRIANGLE TRUSS  
C VACANT
- TRACT 26**  
A DOOP'S BLDG. COMPONENTS, INC./NO  
B SUPERLITE BLOCK
- TRACT 27**  
VACANT
- TRACT 28**  
VACANT
- TRACT 29**  
VACANT
- TRACT 30**  
A VACANT  
B GILA RIVER DISPLAYS
- TRACT 31**  
A AKIMEL COTTAGE  
B CLASSY CLOSETS  
C CLASSY CLOSETS ADDITION  
D PALM HARBOR HOMES  
E CUNNINGHAM COMMERCIAL VEHICLES  
F VACANT  
G GILA RIVER LONE BUTTE CASINO  
H CASINO EMPLOYEE PARKING



**Figure 2.4**  
**Residential Areas in the Vicinity of the Facility**  
**Romic Environmental Technologies Corporation**  
**Chandler, Arizona**



US EPA ARCHIVE DOCUMENT

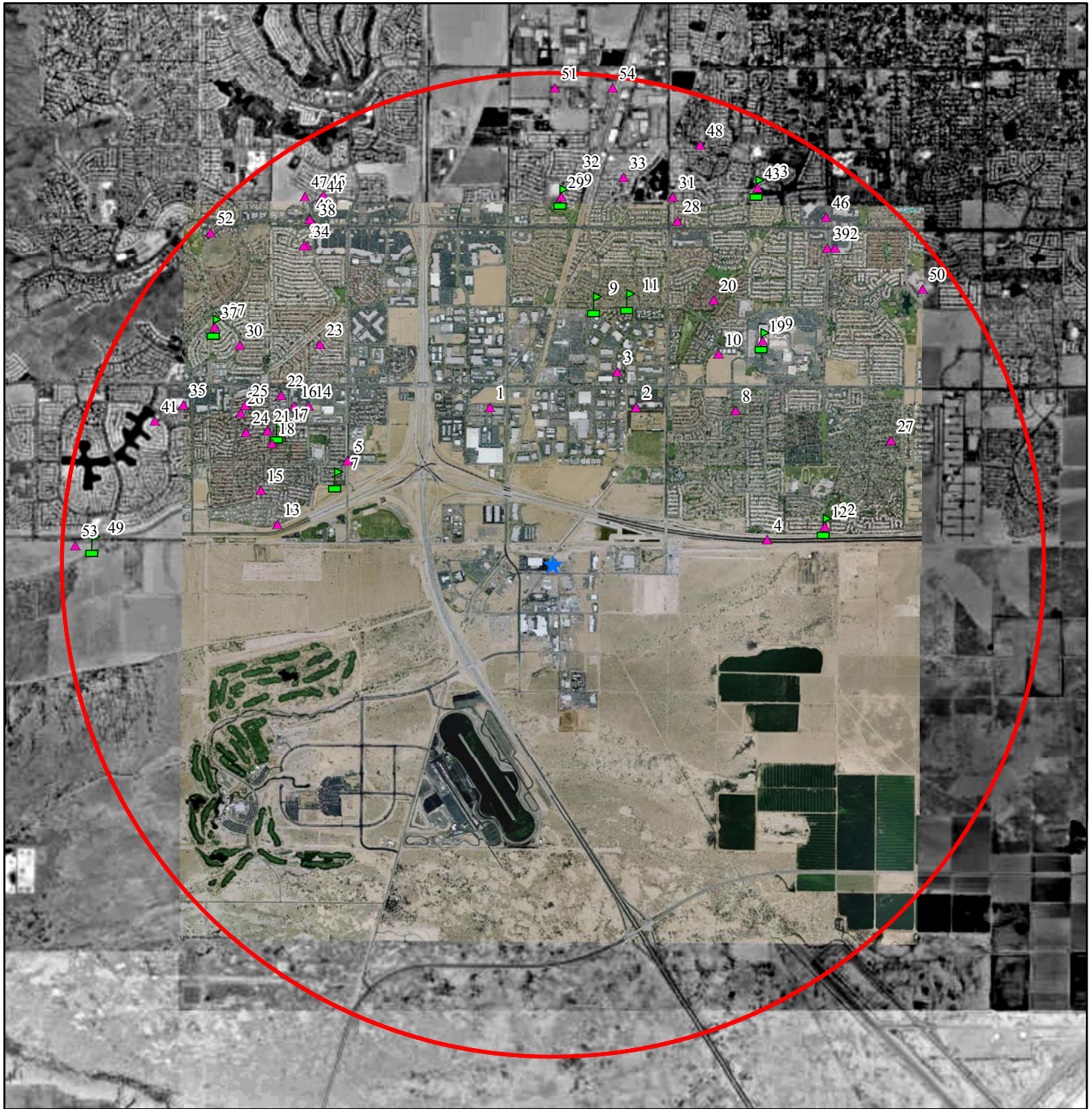
**Legend**

- ★ Facility
- Residences

0.5 0.25 0 0.5 Miles



**Figure 2.5**  
**Sensitive Receptors in the Vicinity of the Facility**  
**Romic Environmental Technologies Corporation**  
**Chandler, Arizona**



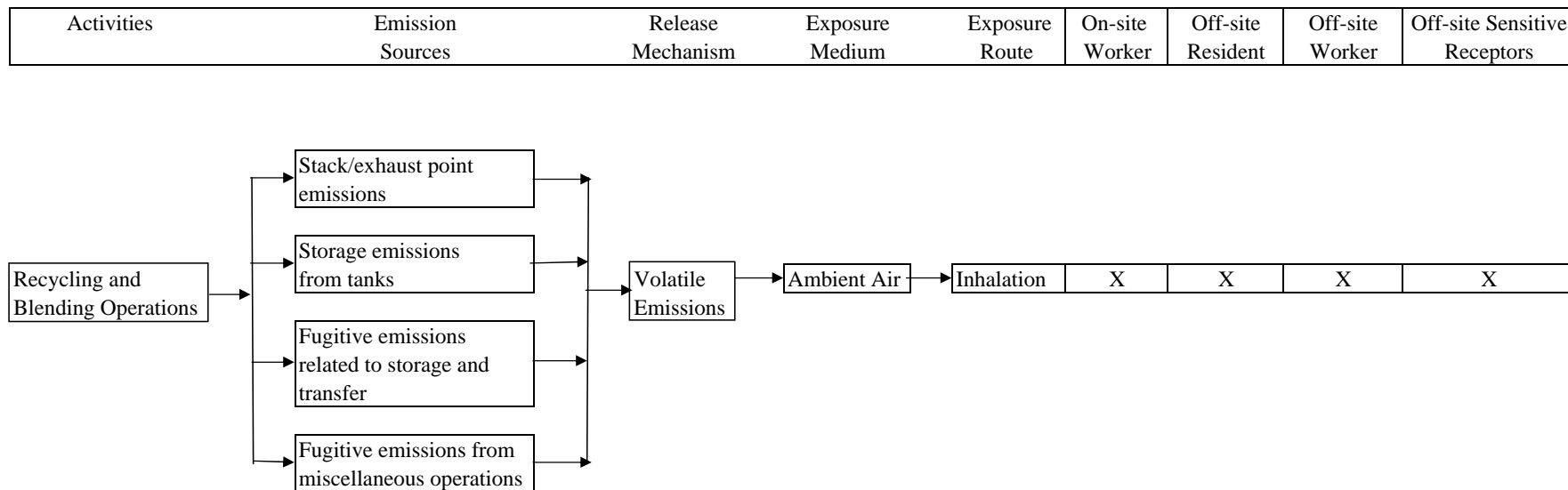
**US EPA ARCHIVE DOCUMENT**

**Legend**

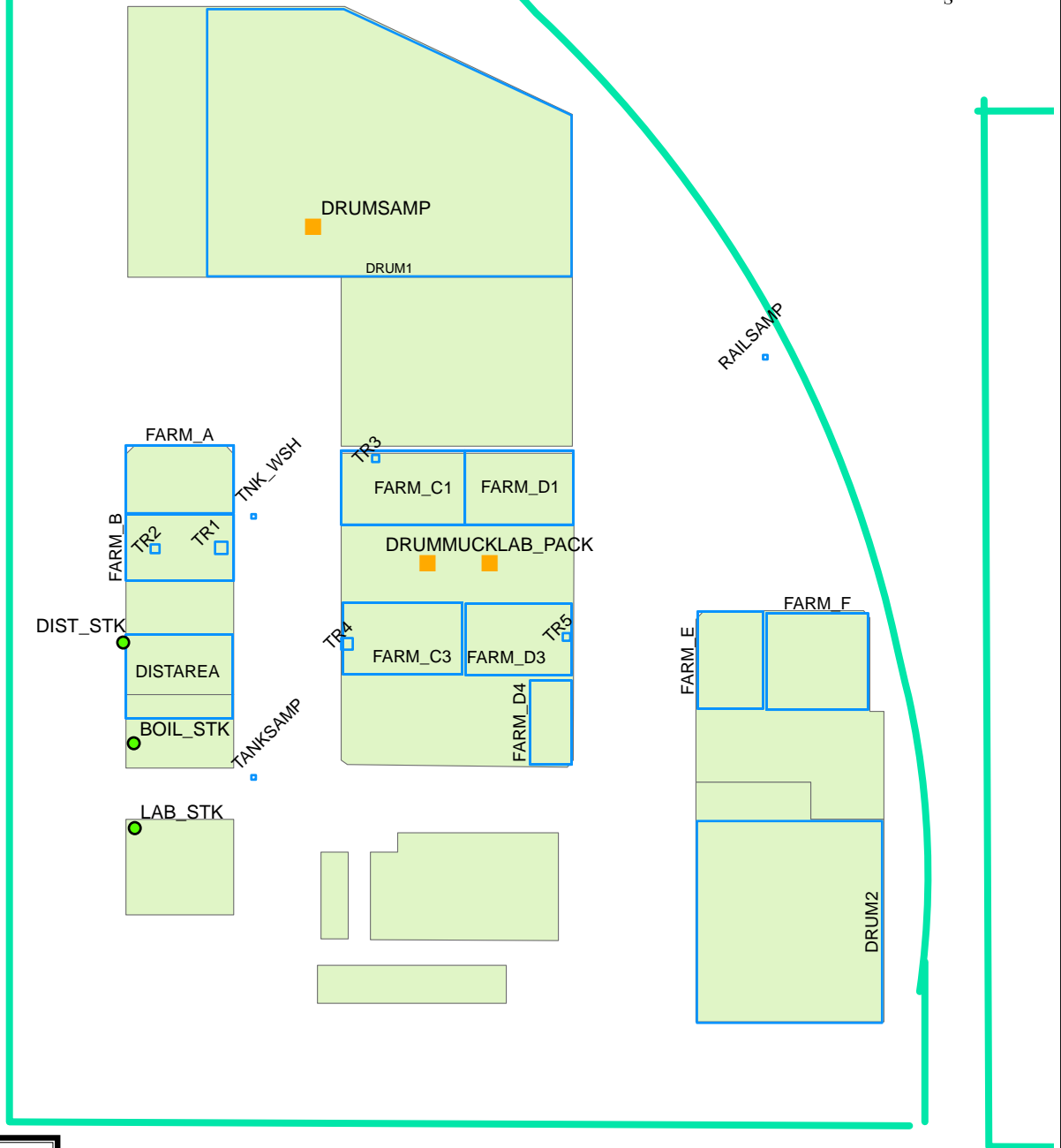
- ★ Facility
- Schools
- ▲ Sensitive Receptors



**Figure 4.1**  
**Conceptual Site Model**  
**Romic Environmental Technologies Inc. - Chandler, Arizona**







**Legend**

- Volume Sources
- Point Sources
- Area Sources
- Buildings
- Facility\_Boundary



**Source Layout**  
**Romic Environmental Technologies Corporation**  
**Chandler, Arizona**

Figure  
**6.1**

6001 Shellmound St., Suite 700, Emeryville, CA 94608

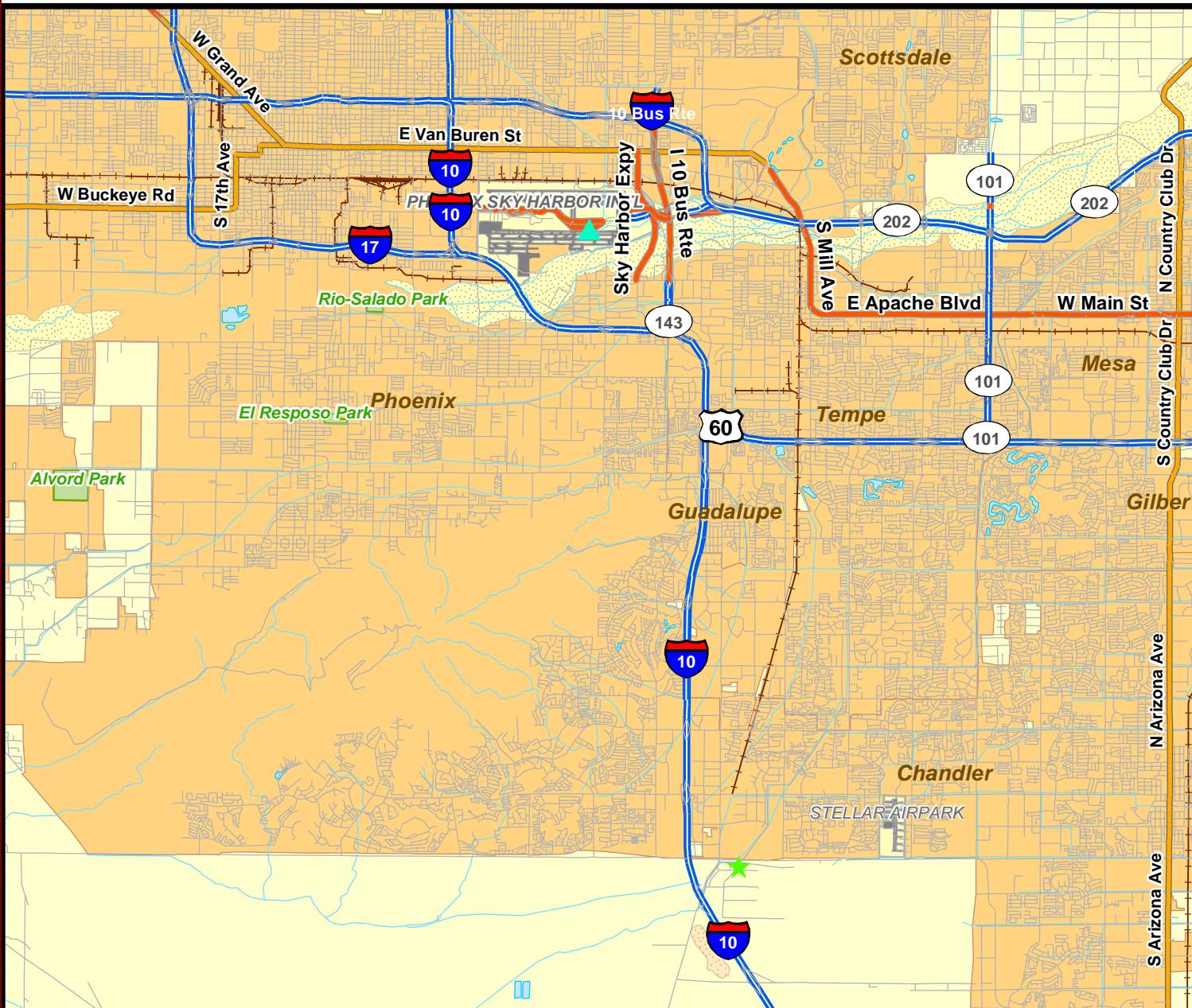
Drafter:

Date: 9/13/06

Contract Number:

Approved:

Revised:



**Legend**

- ★ Facility
- ▲ Phoenix Sky Harbor Airport



**ENVIRON**

Regional Topography  
Romic Environmental Technologies Corporation  
Chandler, Arizona

Figure

**6.2**

6001 Shellmound St., Suite 700, Emeryville, CA 94608

Drafter:

Date: 8/21/06

Contract Number:

Approved:

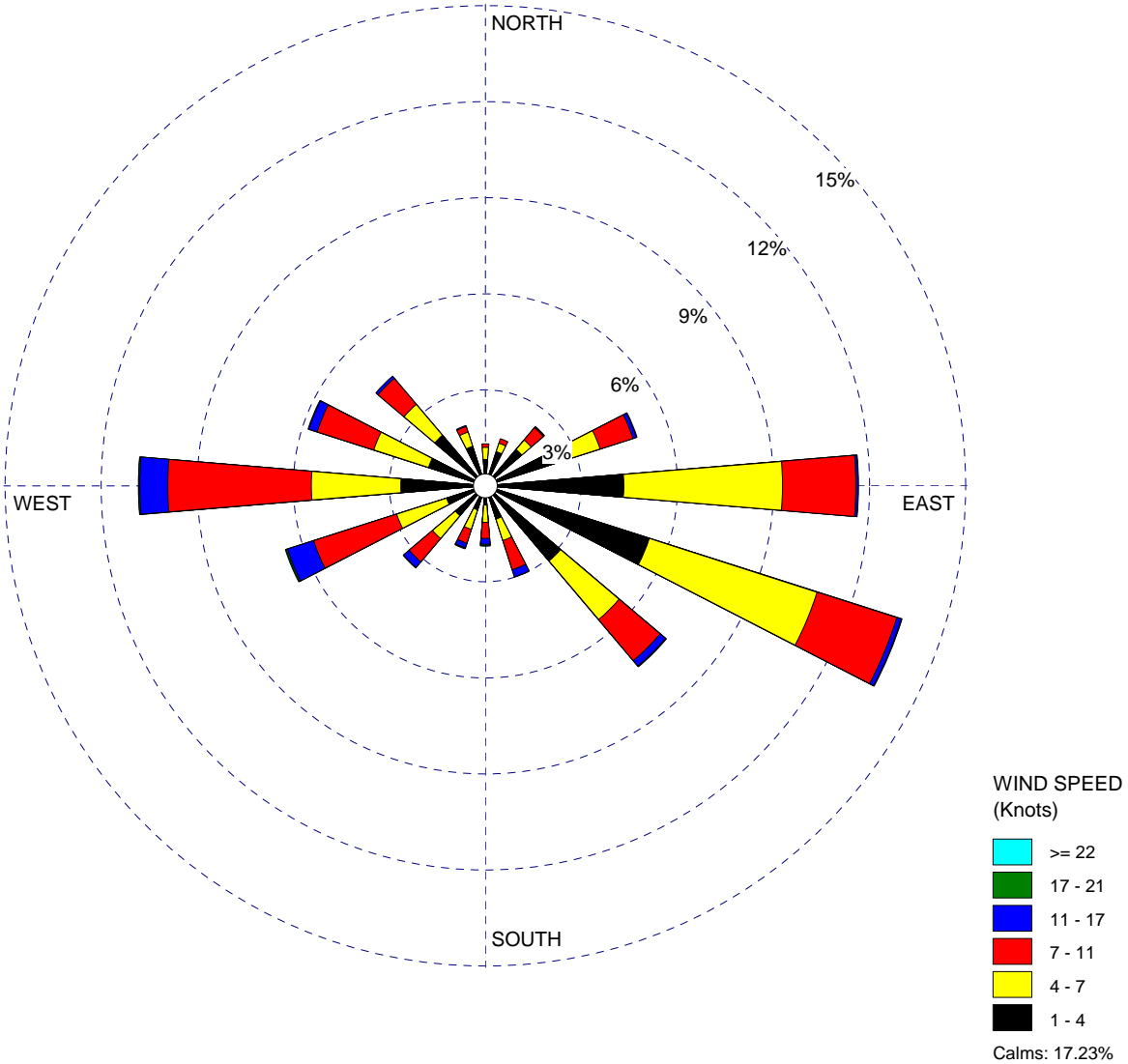
Revised:

WIND ROSE PLOT:

**Figure 6.3 Surface Windrose for Phoenix Sky Harbor International Airport (1994)**

DISPLAY:

**Wind Speed  
Direction (blowing from)**



COMMENTS:

DATA PERIOD:

**1994  
Jan 1 - Dec 31  
00:00 - 23:00**

COMPANY NAME:

MODELER:

CALM WINDS:

**17.23%**

TOTAL COUNT:

**8760 hrs.**

AVG. WIND SPEED:

**4.85 Knots**

DATE:

**08/21/2006**

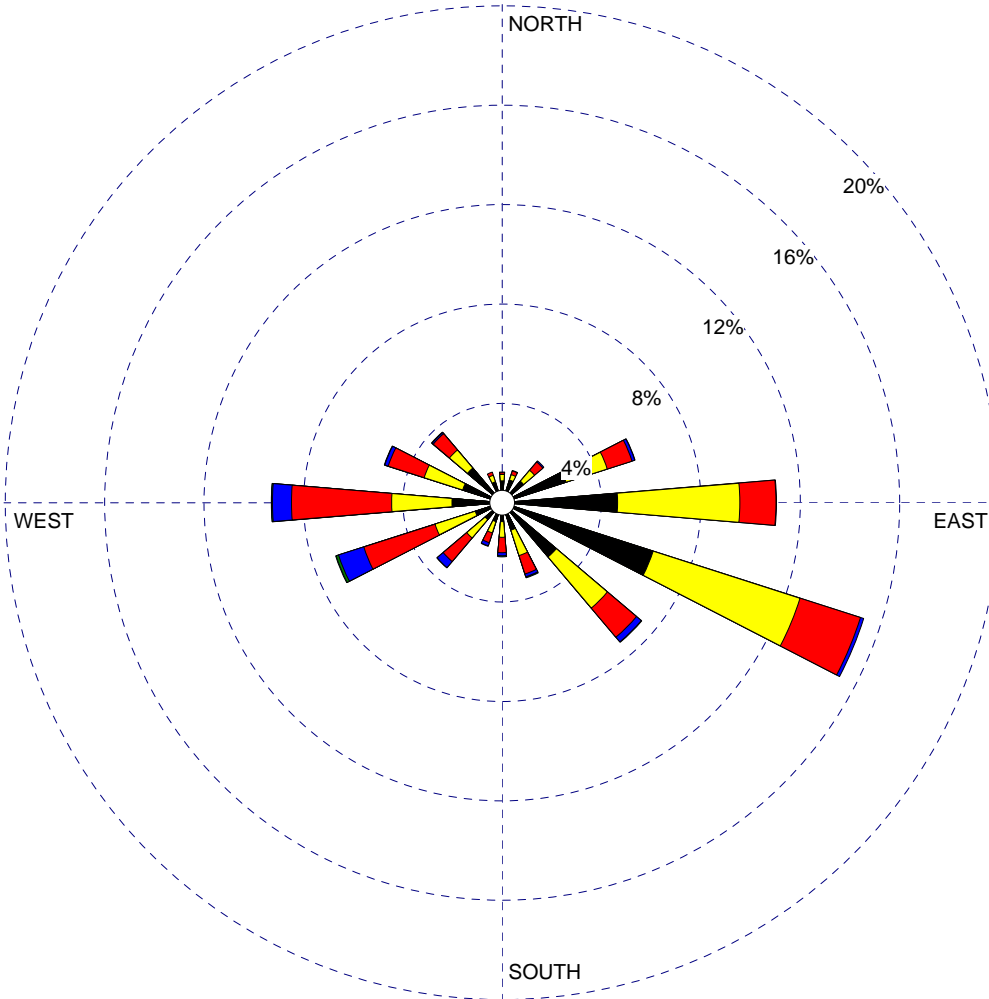
PROJECT NO.:

WIND ROSE PLOT:

**Figure 6.4 Surface Windrose for Phoenix Sky Harbor International Airport (1995)**

DISPLAY:

**Wind Speed  
Direction (blowing from)**



WIND SPEED  
(Knots)

- >= 22
- 17 - 21
- 11 - 17
- 7 - 11
- 4 - 7
- 1 - 4

Calms: 19.10%

COMMENTS:

DATA PERIOD:

**1995  
Jan 1 - Dec 31  
00:00 - 23:00**

COMPANY NAME:

MODELER:

CALM WINDS:

**19.10%**

TOTAL COUNT:

**8760 hrs.**

AVG. WIND SPEED:

**4.70 Knots**

DATE:

**08/21/2006**

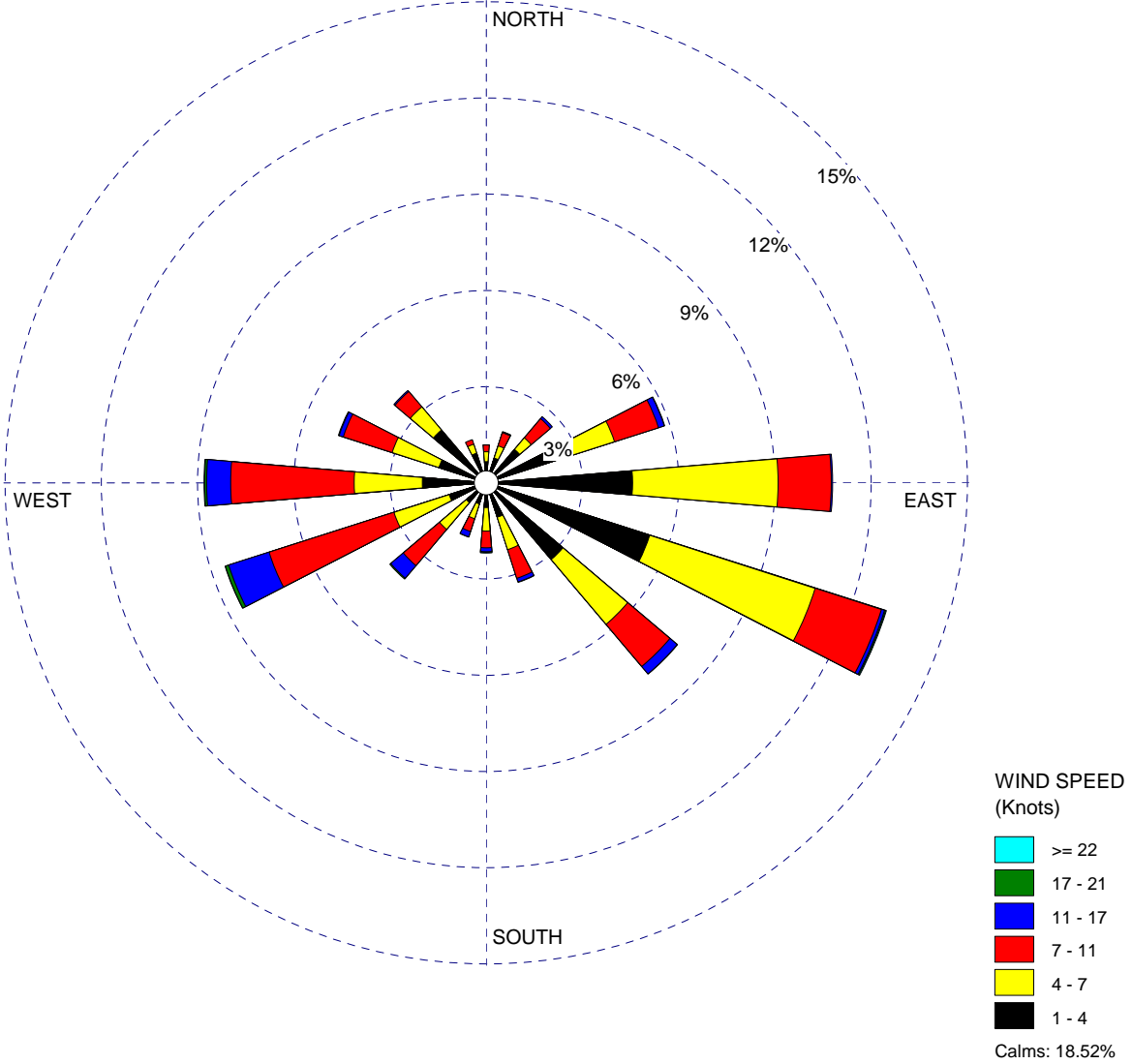
PROJECT NO.:

WIND ROSE PLOT:

**Figure 6.5 Surface Windrose for Phoenix Sky Harbor International Airport (1996)**

DISPLAY:

**Wind Speed  
Direction (blowing from)**



COMMENTS:

DATA PERIOD:

**1996  
Jan 1 - Dec 31  
00:00 - 23:00**

COMPANY NAME:

MODELER:

CALM WINDS:

**18.52%**

TOTAL COUNT:

**8784 hrs.**

AVG. WIND SPEED:

**4.88 Knots**

DATE:

**08/21/2006**

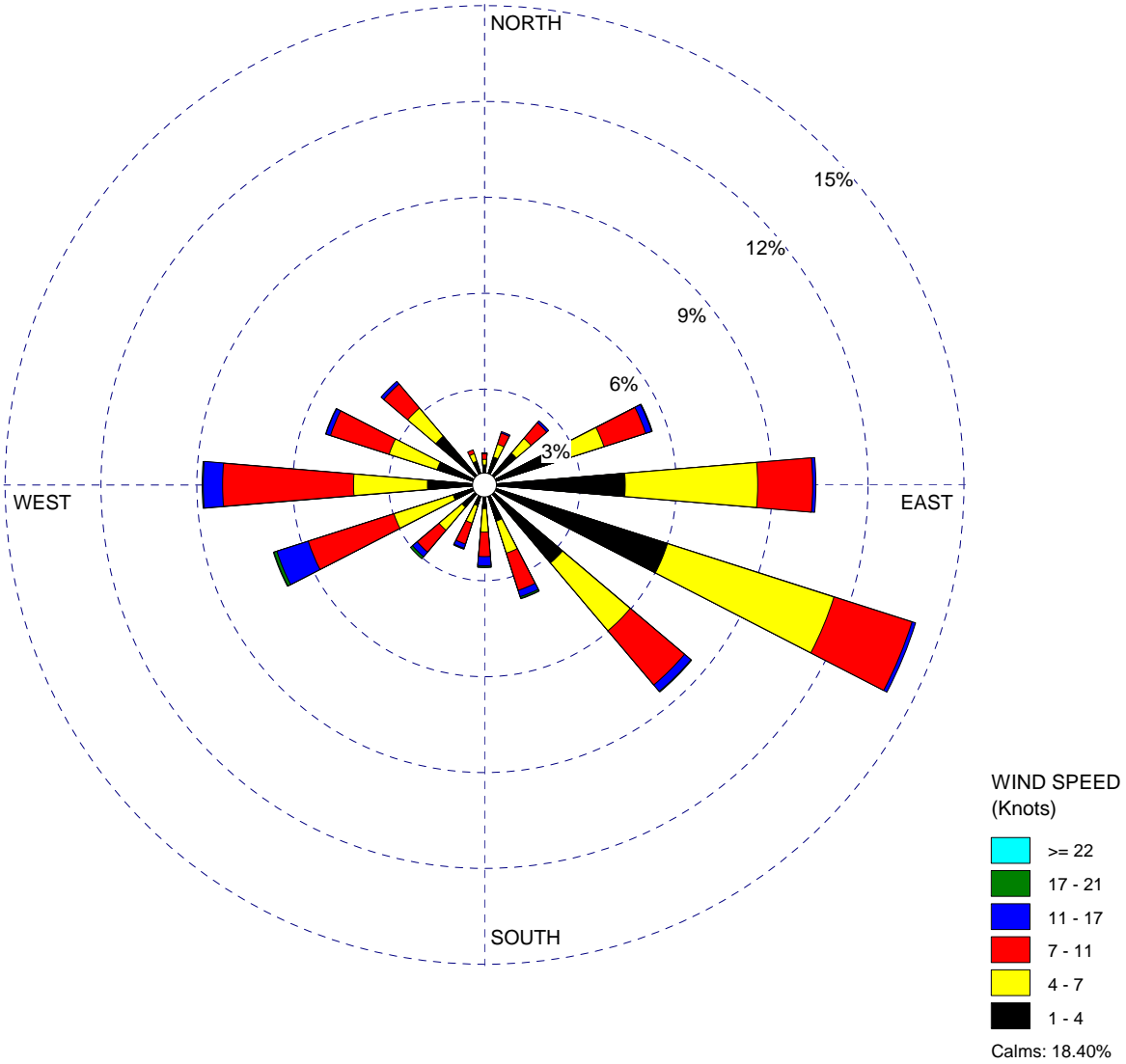
PROJECT NO.:

WIND ROSE PLOT:

**Figure 6.6 Surface Windrose for Phoenix Sky Harbor International Airport (1997)**

DISPLAY:

**Wind Speed  
Direction (blowing from)**



COMMENTS:

DATA PERIOD:

**1997  
Jan 1 - Dec 31  
00:00 - 23:00**

COMPANY NAME:

MODELER:

CALM WINDS:

**18.40%**

TOTAL COUNT:

**8760 hrs.**

AVG. WIND SPEED:

**4.88 Knots**

DATE:

**08/21/2006**

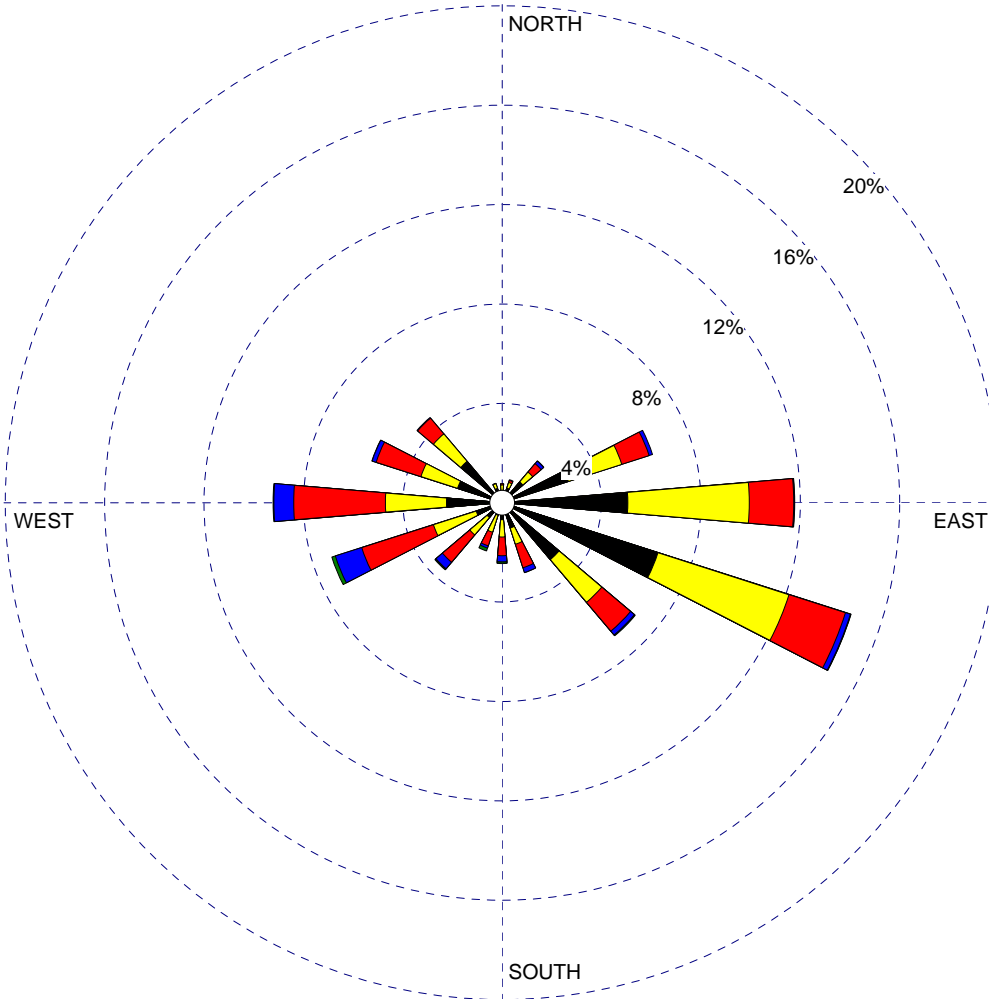
PROJECT NO.:

WIND ROSE PLOT:

**Figure 6.7 Surface Windrose for Phoenix Sky Harbor International Airport (1998)**

DISPLAY:

**Wind Speed  
Direction (blowing from)**



WIND SPEED  
(Knots)

- >= 22
- 17 - 21
- 11 - 17
- 7 - 11
- 4 - 7
- 1 - 4

Calms: 18.08%

COMMENTS:

DATA PERIOD:

**1998  
Jan 1 - Dec 31  
00:00 - 23:00**

COMPANY NAME:

MODELER:

CALM WINDS:

**18.08%**

TOTAL COUNT:

**8760 hrs.**

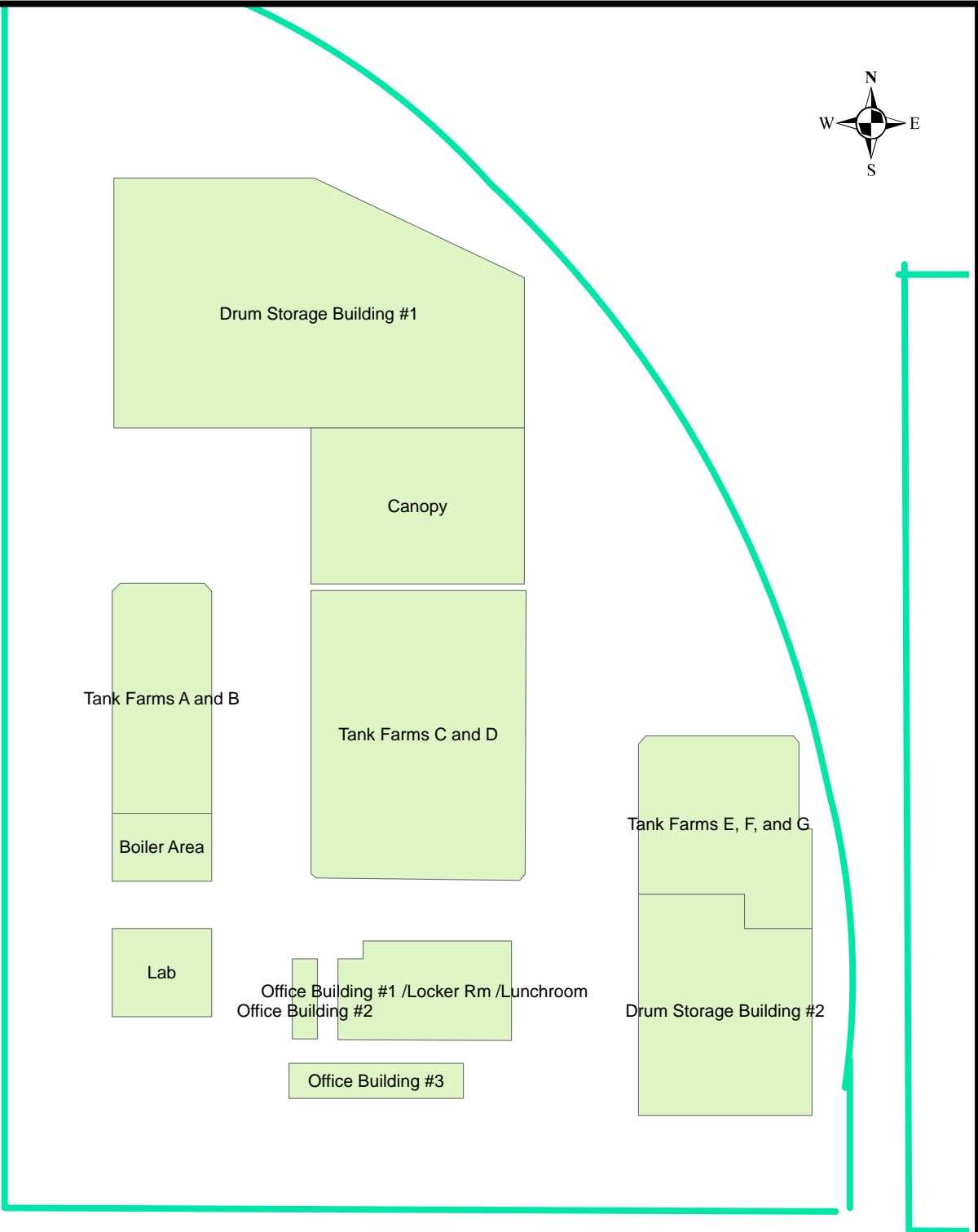
AVG. WIND SPEED:

**4.85 Knots**

DATE:

**08/21/2006**

PROJECT NO.:



**Legend**

- Buildings
- Facility Boundary



**Building Downwash Parameters**  
**Romic Environmental Technologies Corporation**  
**Chandler, Arizona**

Figure  
**6.8**





**Legend**

- ★ Facility
- Worker Receptor



**ENVIRON**

Off-Site Worker Receptors  
Romic Environmental Technologies Corporation  
Chandler, Arizona

Figure  
**6.9**

6001 Shellmound St., Suite 700, Emeryville, CA 94608

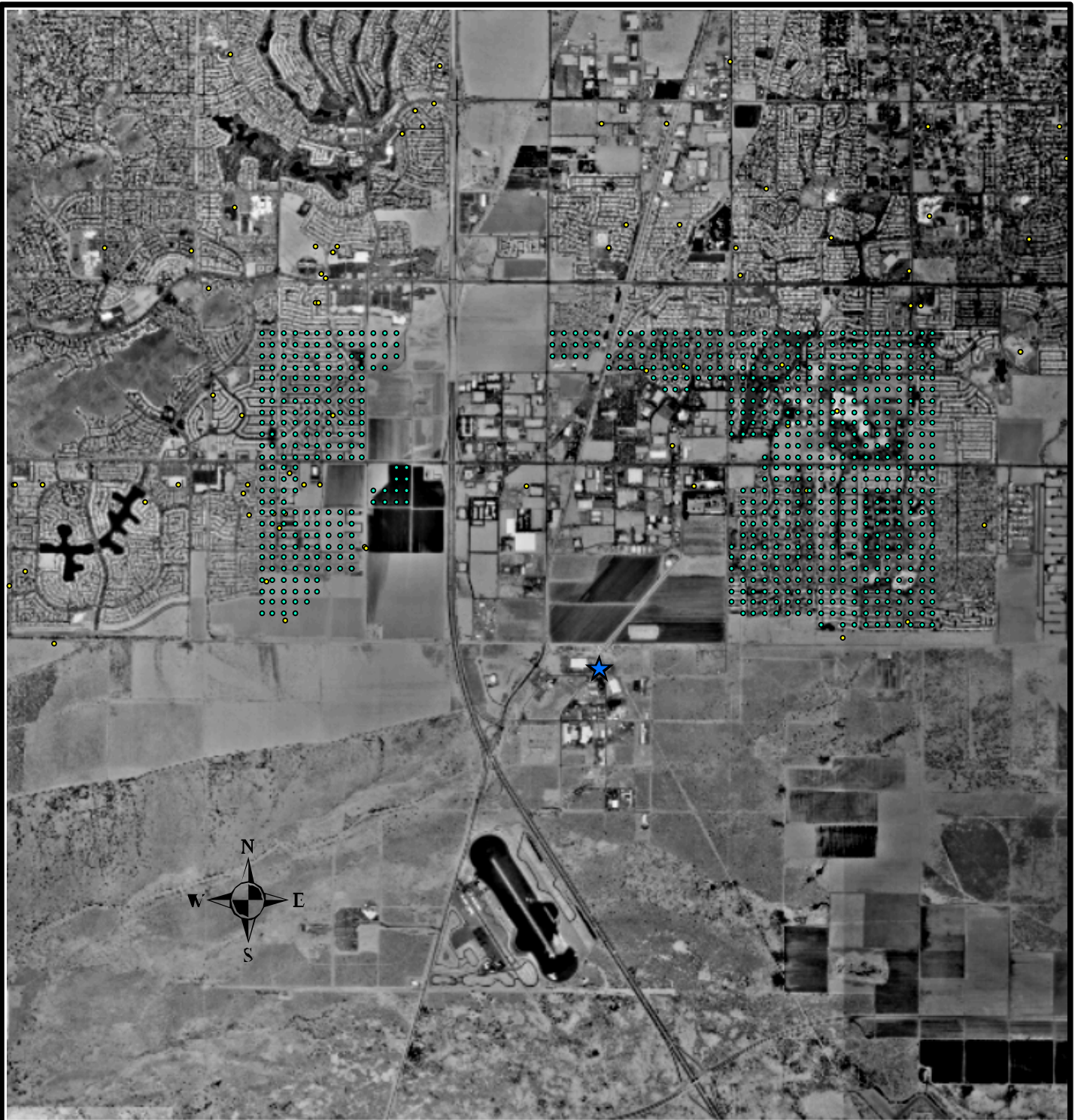
Drafter:

Date:

Contract Number:

Approved:

Revised:



**Legend**

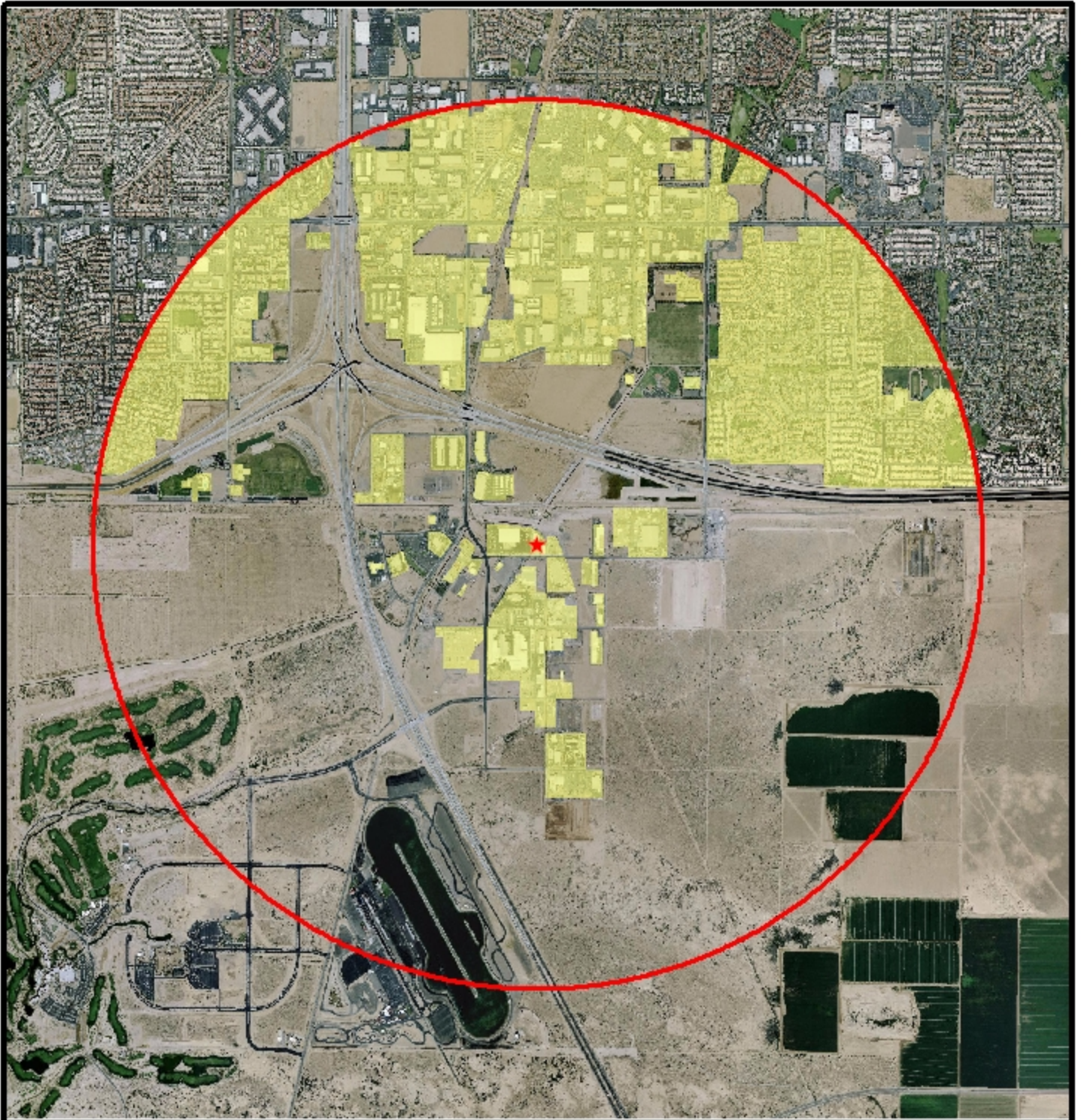
- ★ Facility
- Sensitive Receptors
- Residential Receptor



Off-Site Residential and Sensitive Receptors  
Romic Environmental Technologies Corporation  
Chandler, Arizona

Figure  
**6.10**

6001 Shellmound St., Suite 700, Emeryville, CA 94608



**Legend**

- ★ Facility location
- Urban land use
- 3 kilometer radius



**ENVIRON**

6001 Shellmound St., Suite 700, Emeryville, CA 94608

Land Use Analysis  
 Romc Environmental Technologies Corporation  
 Chandler, Arizona

Figure

**6.11**

Drafter:

Date:

Contract Number:

Approved:

Revised:



**Legend**

- ★ Facility
- 10E-6



**ENVIRON**

6001 Shellmound St., Suite 700, Emeryville, CA 94608

**Isopleth - Worker Risks - AEI**  
**Romic Environmental Technologies Corporation**  
**Chandler, Arizona**

Figure  
**7.1**

Drafter:

Date: 9/11/06


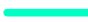

Contract Number:

Approved:

Revised:



**Legend**

-  Facility
-  10E-5
-  10E-6



**ENVIRON**

6001 Shellmound St., Suite 700, Emeryville, CA 94608

**Isopleth - Worker Risks - RME**  
**Romic Environmental Technologies Corporation**  
**Chandler, Arizona**

Figure  
**7.2**

Drafter:

Date: 9/11/06

Contract Number:

Approved:

Revised: