

US EPA ARCHIVE DOCUMENT



Superfund 101 & Site Update

West Lake Landfill Community Dialogue Framework

March 2, 2016

Terrie Boguski, Skeo Solutions





TASC

- Technical Assistance Services for Communities (TASC)
- Provides non-advocacy, independent technical assistance





Overview

- What is Superfund?
- Goals of Superfund
- Step-by-Step Superfund process
- Where is the West Lake Landfill site in the Superfund process?
- West Lake Landfill Site Update





Superfund History

- What is Superfund?
- How did Superfund start?
 - EPA established the Comprehensive Environmental Response, Compensation and Liability Act (CERCLA) in 1980
 - CERCLA also known as Superfund
 - Superfund amended in 1986 to improve regulations
 - Superfund Tax expired in 1995
 - Designed as a Polluter Pays Law—Authorizes government to negotiate orders with PRPs





Goals of Superfund

- Protect human health and the environment
- Encourage participation of states in the Superfund process
- Provide opportunity for community involvement
- Pursue potentially responsible parties liable for cleanup and other costs at Superfund sites





Superfund Process



Discovery



Assessment



Cleanup
Decision



Cleanup



Post-Cleanup
Activities

Removal Actions
Can Occur at
Anytime in the
Process.



West Lake Landfill Discovery

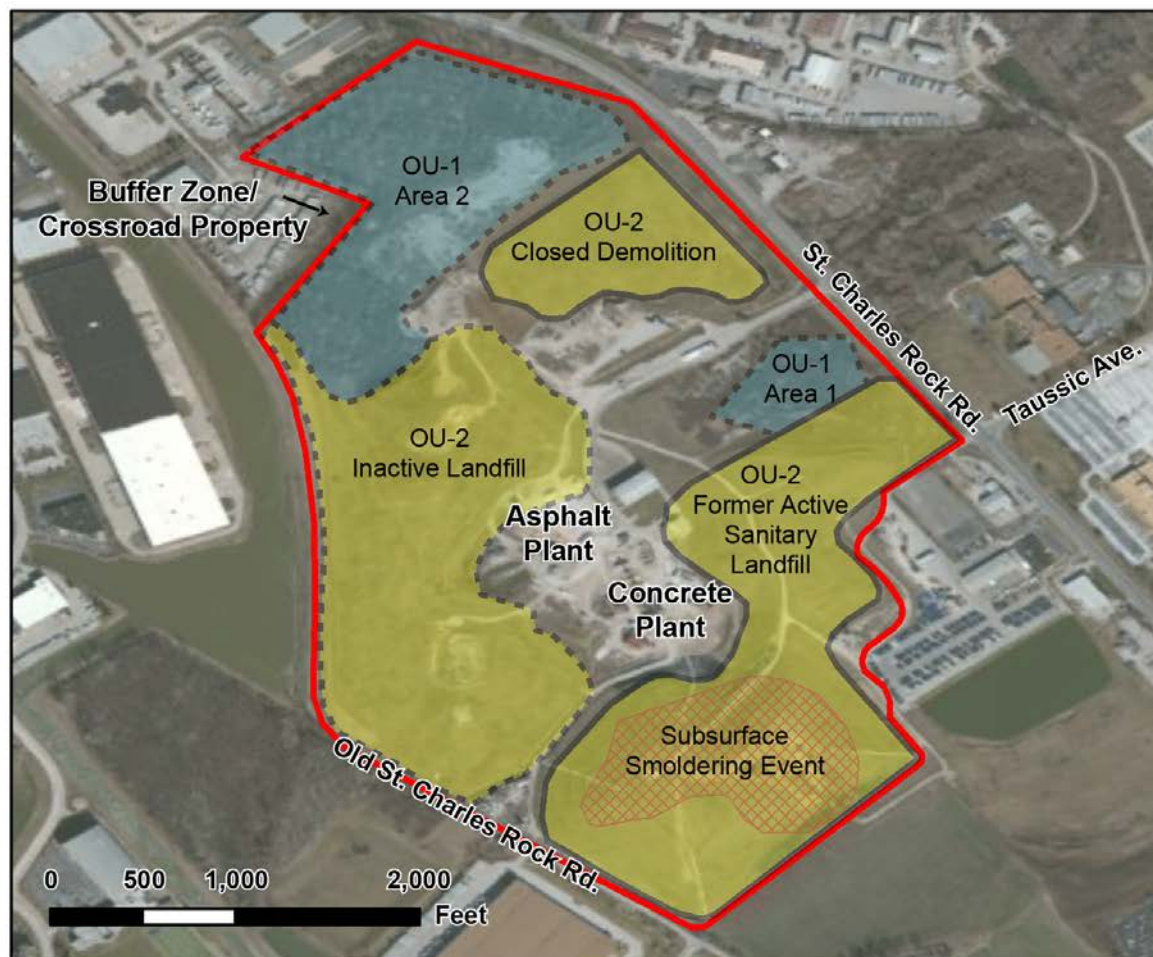
- **1973:** 8,700 tons of radiologically contaminated material mixed with about 39,000 tons of soil transported to the landfill and used as daily cover
- **1982:** Investigated by the Nuclear Regulatory Commission
- **1990:** West Lake Landfill placed on EPA's Superfund NPL

Discovery





West Lake Landfill Site Map



West Lake Landfill Site Location and Layout



Legend

- Site Boundary
- OU-1 (Radiological Areas)
- OU-2 (Nonradiological Areas)
- EPA Oversight
- MDNR Oversight
- Subsurface Smoldering Event



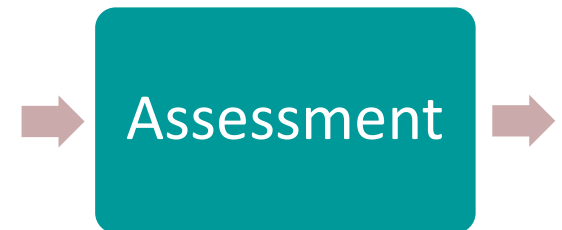
Sources: Esri, DeLorme, AND, Tele Atlas, First American, UNEP-WCMC, USGS.

*Approximate area of Subsurface Smoldering Event as of 2014.



West Lake Landfill Assessment

- **2000-2006:** Remedial Investigation & Feasibility Study (RI/FS)
- *2008: Record of Decision (ROD)*
- **2008-2011:** Supplemental Feasibility Study
- **2011-2016:** Final Feasibility Study





West Lake Landfill Cleanup

- **Future:** Revised Proposed Remedy Decision

- **Future:** Revised Remedy Decision

- **Future:** Negotiation of Consent Decree for Remedial Design and Construction

- **Future:** Remedial Design

- **Future:** Construction of Remedy

- **Ongoing:** Surface Fire Mitigation Removal Action

- **Future:** Isolation Barrier Removal Action

Cleanup
Decision

Cleanup

Cleanup
Decision



Post-Cleanup Activities

- Operation and Maintenance
- Five-Year Review
- NPL Deletion



Post-Cleanup
Activities



West Lake Landfill Site Update

Extent of Radiologically-Impacted Material in Area 1

“Comprehensive Phase 1 Report”

1. Additional characterization work completed in December (2015)
2. EPA reviewing/commenting on draft Phase 1 Report
3. Final Phase 1 Report expected to be released in March or April (2016)





West Lake Landfill Site Update

Surface Fire Mitigation

1. Field work began in February and expected to last through the spring.
2. Vegetation cut-in-place, matted, then covered with geotextile fabric and at least 8 inches of crushed rock.
3. Work performed under EPA oversight
4. Pictures of on-going work available on our Facebook and Twitter pages

Isolation Barrier

1. EPA announced decision in December.
2. System will include a series of components including physical wall, cooling loops, and additional monitoring.
3. EPA currently negotiating terms of the agreement with Potentially Responsible Parties.



West Lake Landfill Site Update

Cleanup Approach for Radiological Material (OU-1 Remedy)

1. On-site investigations completed in December 2015.
2. EPA currently performing data validation and interpretation.
3. Remedial Investigation Addendum Report expected in Fall 2016.
4. Final Feasibility Study also expected in Fall 2016.
5. Proposed Remedy Decision for Public Comment in December 2016.

Groundwater Investigation

1. EPA planning to conduct groundwater investigation as Operable Unit 3.
2. EPA is currently scoping the investigation.
3. EPA will negotiate with the Potentially Responsible Parties to conduct the work.



Questions?





CONTACT INFORMATION

TASC Technical Assistance Provider

Terrie Boguski

(434) 975-6700, ext 266

tboguski@skeo.com



EPA Online Resources

West Lake Landfill Website:

http://www3.epa.gov/region07/cleanup/west_lake_landfill/index.htm

West Lake Landfill Facebook Page:

<https://www.facebook.com/WestLakeLandfillSuperfundSite/>

West Lake Landfill Twitter Page:

<https://twitter.com/WestLakeSite>