

US EPA ARCHIVE DOCUMENT



2008 Record of Decision

West Lake Landfill Community Dialogue Framework

April 18, 2016

Terrie Boguski, Skeo Solutions





TASC

- Technical Assistance Services for Communities (TASC)
- Provides non-advocacy, independent technical assistance





Agenda

- Superfund remedial process at West Lake Landfill
- 2006 Feasibility Study (FS)
- 2008 Record of Decision (ROD)
- Preferred Remedy Conceptual Design



West Lake Landfill

M:\clients\EMS\westlake\2015\Comp Report\WL-Fig-2-Fac-Layout.dwg



Legend

- - - - - Operable Unit-1 Areas
- - - - - Operable Unit-2 Areas



Figure 2

Facility Layout

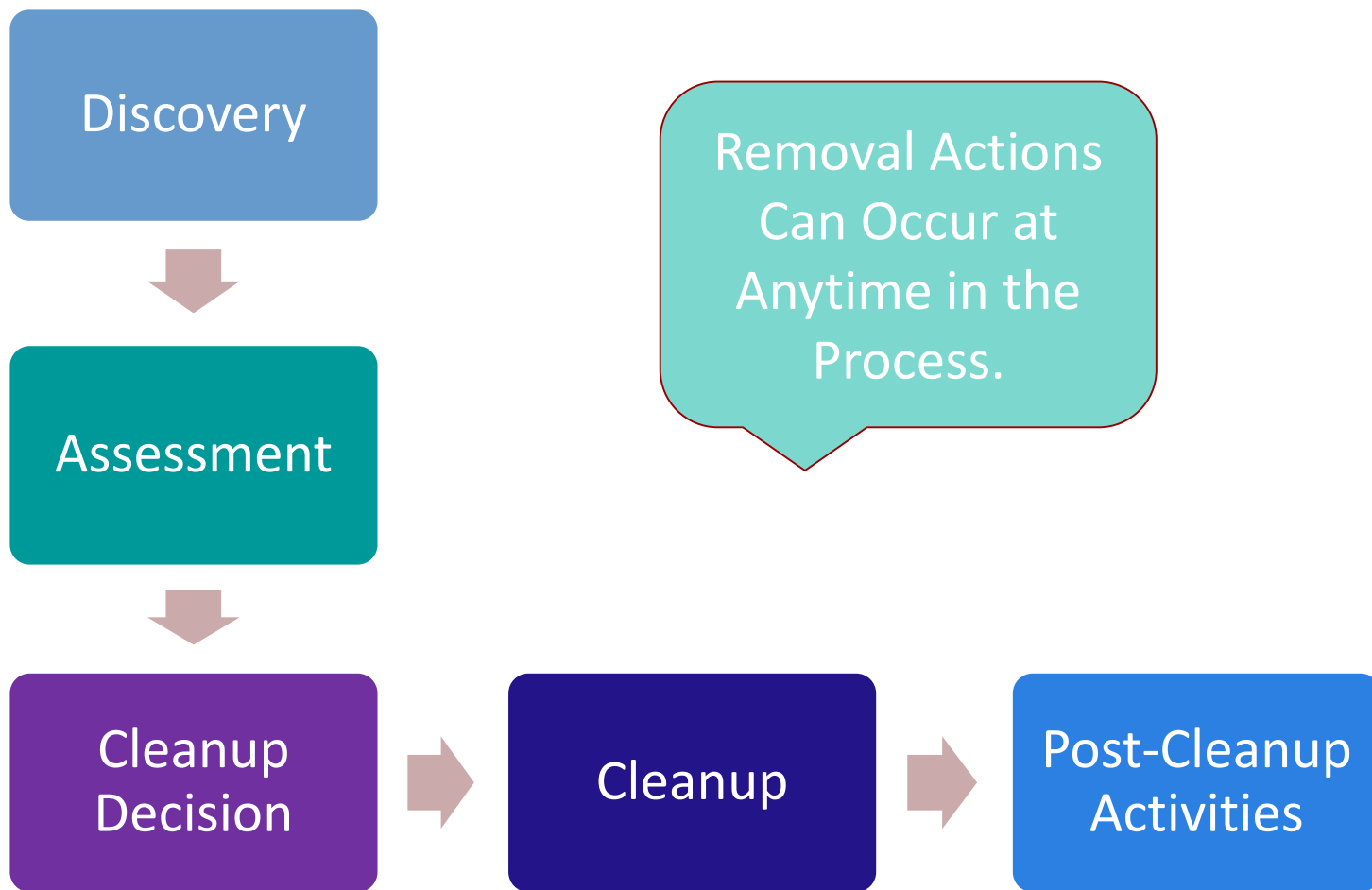
West Lake Landfill Superfund Site

EMSI Engineering Management Support, Inc.

Superfund Remedial Process



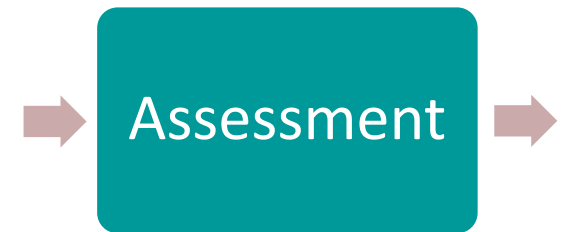
Superfund Process





West Lake Landfill Assessment

- **2000-2006:** Remedial Investigation & **Feasibility Study** (RI/FS)
- **2008: Record of Decision (ROD)**
- **2008-2011:** Supplemental Feasibility Study
- **2011-2016:** Final Feasibility Study



2006 Feasibility Study (FS)



FS Evaluation Criteria

➤ **Threshold**

1. Overall Protection of Human Health and the Environment
2. Compliance with ARARs

➤ **Balancing**

3. Long-Term Effectiveness and Permanence
4. Reduction of Toxicity, Mobility, or Volume
5. Short-Term Effectiveness
6. Implementability
7. Cost





FS Evaluation Criteria

➤ **Modifying**

8. State Acceptance

9. Community Acceptance





2006 FS Cleanup Alternatives

Alternative

1. No Action
2. Cover Repair and Maintenance, Additional Access Restrictions, Additional Institutional Controls, Monitoring
3. Soil Cover to Address Gamma Exposure and Erosion Potential
4. Regrading of Areas 1 and 2 (minimum slope of 2%), Installation of a Subtitle D Cover System
5. Regrading of Areas 1 and 2 (minimum slope of 5%), Installation of a Subtitle D Cover System
6. Excavation of Material with Higher Levels of Radioactivity from Area 2 and Regrading, Installation of a Subtitle D Cover System

2008 Record of Decision (ROD)



2008 Record of Decision

- Specifies:
 - Preferred remedy
 - Major remedy components
 - Preferred remedy conceptual design





Preferred Remedy

- Alternative 4 (below), plus moving contaminated material from the Buffer Zone/Crossroads property and consolidating it under Areas 1 and 2 landfill covers

Regrading of Radiological Areas 1 and 2 (minimum slope of 2%), Installation of a Subtitle D Cover System



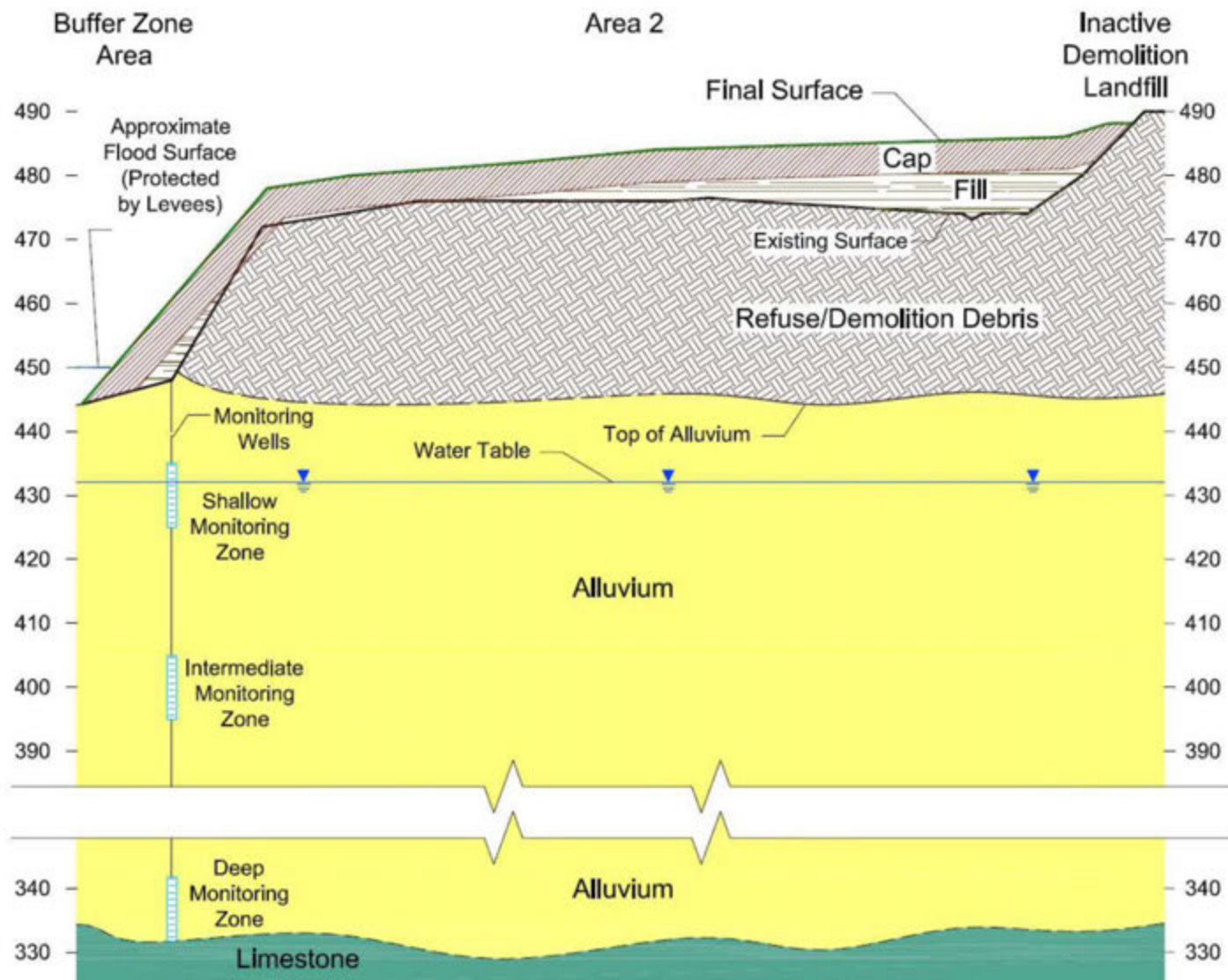
Major Remedy Components

- Landfill cover with enhancements (armoring layer and radon barrier)
- Consolidation of radiologically contaminated surface soil from Ford property to containment area
- Groundwater monitoring
- Surface water runoff control
- Gas monitoring and control, including radon and decomposition gas as necessary
- Institutional controls to prevent inappropriate land and resource uses
- Long-term surveillance and maintenance

Preferred Remedy Conceptual Design

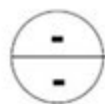
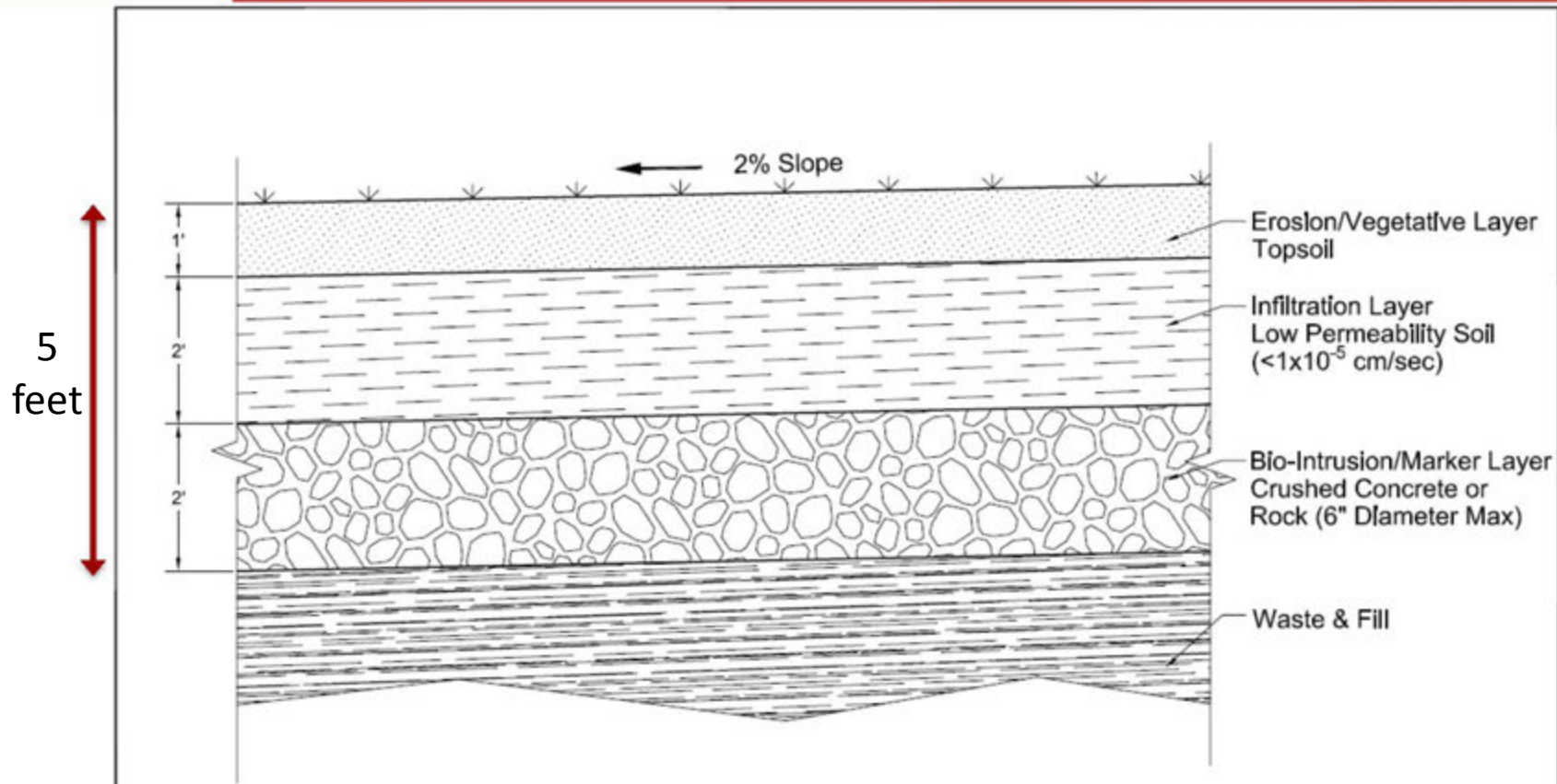


2008 WLL ROD Conceptual Design





2008 ROD Landfill Cap Design

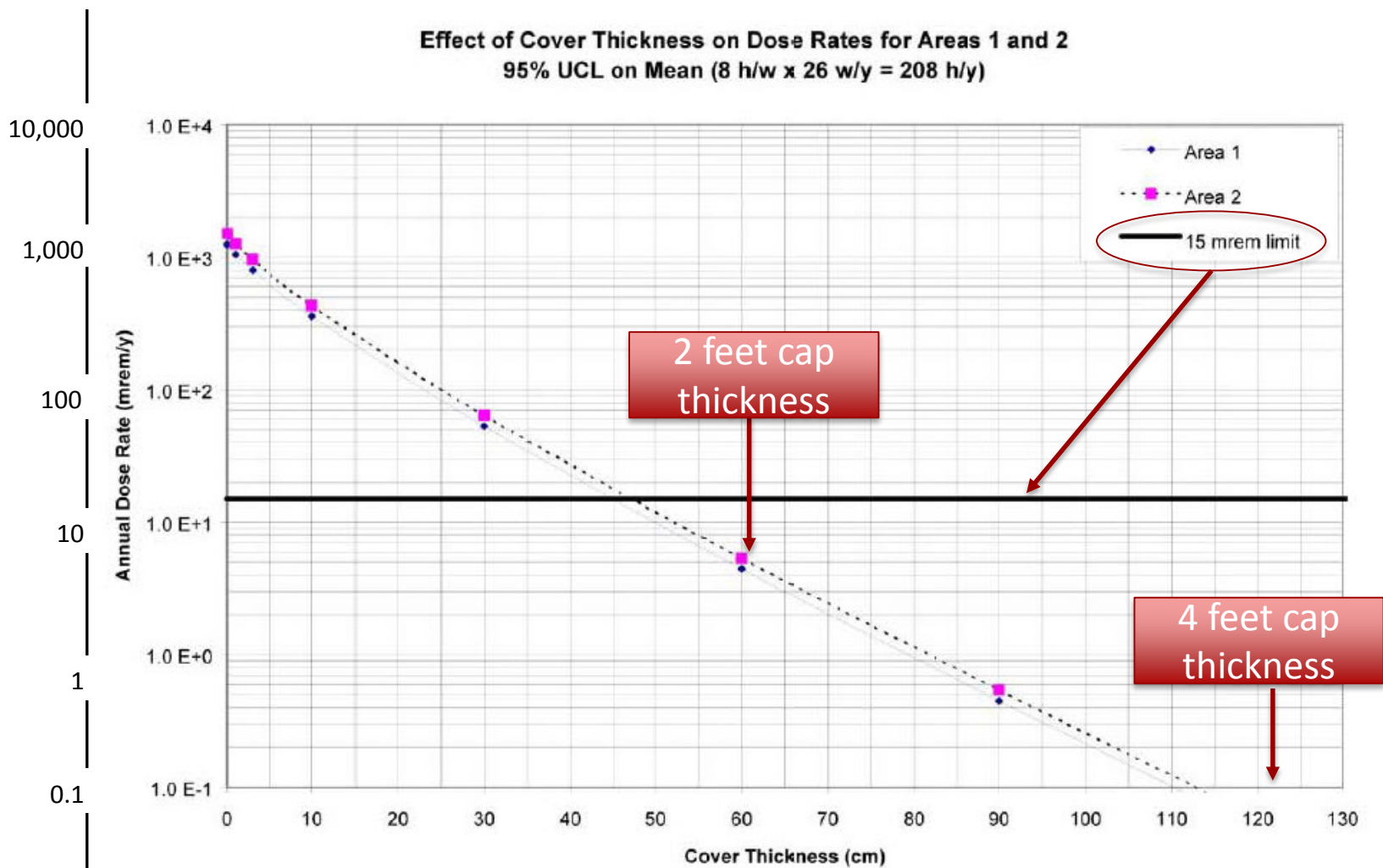


ENGINEERED LANDFILL COVER DETAIL

NOT TO SCALE



Radiation and Cap Thickness



Summary



Community Concerns about 2008 ROD

- Level of protectiveness for nearby residents
- Protection of groundwater
- Protection from natural disasters
 - Flooding
 - Earthquakes
 - Tornados
- Protection from radon and other potential airborne contamination





What Has Changed Since 2008?

- EPA heard community concerns
 - In response to public comments and concerns, EPA tasked the PRPs to collect additional data to better characterize the location and volume of RIM
 - This new data will allow for thorough evaluation of all 3 alternatives: cap in place, partial excavation, full excavation





Future

- Once EPA proposes a final remedy, the public will have an opportunity to comment





Questions and Next Steps





CONTACT INFORMATION

TASC Technical Assistance Provider

Terrie Boguski, PE

(913) 780-3328

tboguski@skeo.com