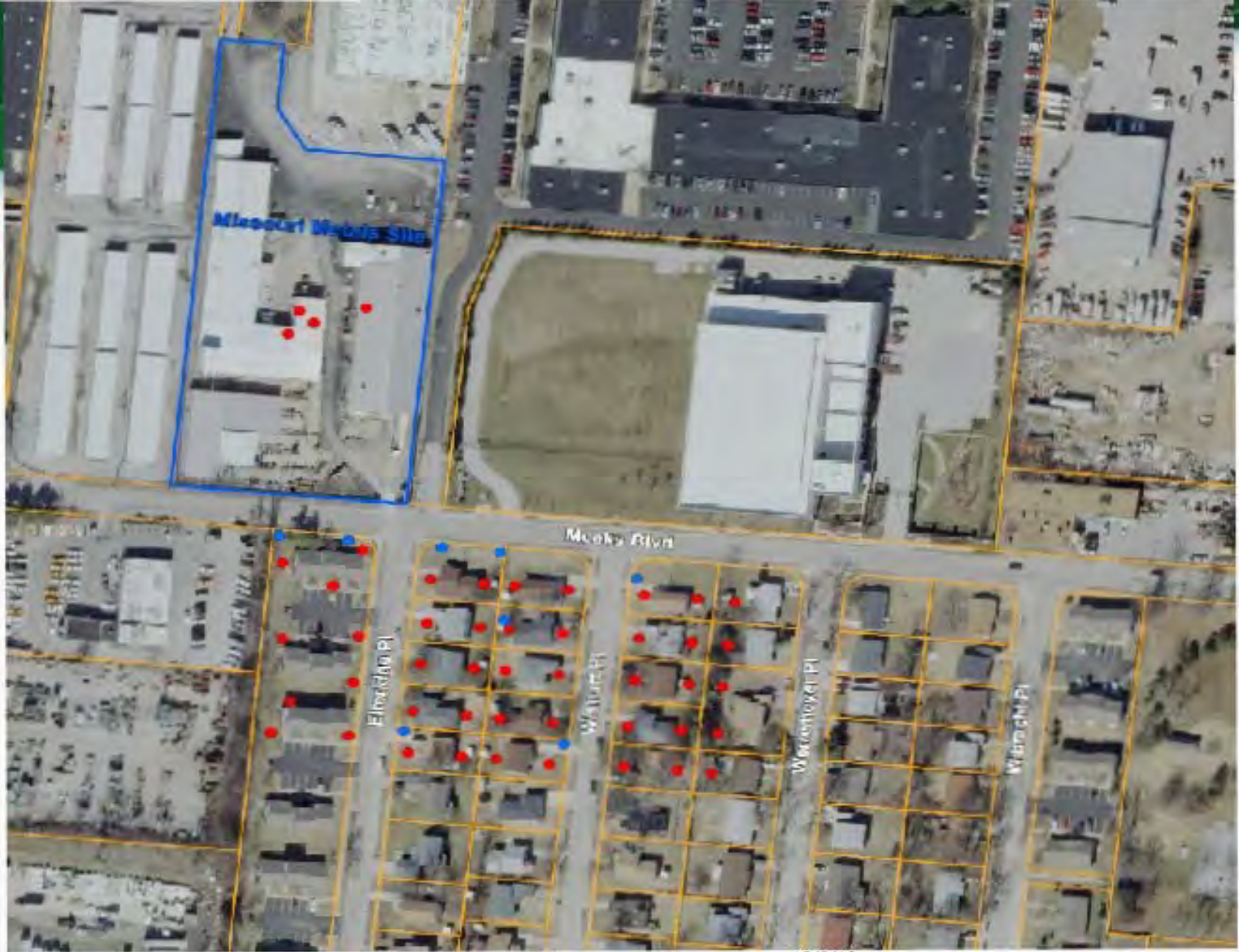


US EPA ARCHIVE DOCUMENT





Legend

- Proposed Shallow Monitoring Well Location
- Soil Gas Sampling Location
- Missouri Metals Site
- Parcel Boundary



Note: This map has been resized and is not to scale.



Chicago Heights Boulevard Site

Community Advisory Groups (CAGs)

EPA Region 7

U.S. Environmental Protection Agency



What is a CAG?

- For our purposes tonight
 - it is a community advisory group that is solely involved with the Chicago Heights Boulevard Site as it pertains to EPA actions to protect human health and the environment



What is the Purpose of a CAG?

- To provide a public forum for community members to present and discuss their needs and concerns related to EPA's cleanup decision-making process for the site



Is a CAG Needed?

- A CAG may not be needed for every site
- CAGs may be beneficial for removal sites especially if the site involves a long-term cleanup



Why Bother With a CAG?

- CAGs provide a setting where members of the community can get up-to-date information about cleanup activities
- Community views and concerns about the cleanup process can be discussed with EPA and others involved in the process



Who Makes Up a CAG?

- Membership should reflect the community near the site
- At least one-half of the CAG's members should be residents of the community
- Members should be drawn from residents and owners of property near the site



Who Makes Up a CAG? (cont.)

- People directly affected by site releases
- Local environmental/public interest groups
- Local businesses
- Local government units
- Local labor representatives



How Big Are CAGs?

- CAGs generally average about 20 members



How are CAG Members Selected?

- Each community is different so selection methods may vary
- The key is to ensure that the CAG will be fully representative of the community



First Steps for a CAG

- Elect a chairperson or co-chairpersons
- Set up a meeting structure
- Agree on the goals you want to achieve



CAG Meetings

- All meetings should be open to the public
- All meetings should be announced publicly (via display ads, flyers, etc.)
- EPA normally attends CAG meetings
- All meetings should be planned well enough in advance to encourage maximum participation



EPA Support

- EPA may assist with administrative support on issues relevant to the site cleanup and decision-making process



EPA Region 7 Contacts

- Belinda Young – Community Involvement Coordinator: 800-223-0425 or 913-551-7463, young.belinda@epa.gov
- John Frey – On-Scene Coordinator: 913-551-7994, frey.john@epa.gov