

US EPA ARCHIVE DOCUMENT



UNITED STATES ENVIRONMENTAL PROTECTION AGENCY

REGION 7
901 NORTH 5TH STREET
KANSAS CITY, KANSAS 66101

OCT 16 2012

MEMORANDUM

SUBJECT: Environmental Justice Screen for Chicago Heights in St. Louis, Missouri

FROM: Brendan Corazzin *B. Corazzin*
Environmental Justice Program

THRU: Althea Moses, Acting Director *Althea Moses*
Enforcement Coordination Office

TO: David Hoefler, Office of Regional Counsel

This memo is a review of potential Environmental Justice areas or concerns surrounding the Chicago Heights Site due to an initial EJ Strategic Enforcement Assessment Tool score of 2. EJ SEAT scores exist on a scale of 1 to 10 with 1 being the highest potential for EJ concerns. The score is determined by indexing a number of environmental, health, and socio-economic indicators and then comparing this index, at the census tract level, to others within the state. According to the preliminary EJ screen below, the data does reflect areas of significant EJ concern.

The demographic information is evaluated within a 1-mile radius surrounding the site. The following results are from the preliminary EJ screen:

1. Facility / Environmental Burden –
Within the zip code of 63132 there are – 347 reported major and/or minor facilities, with 4 having an enforcement and/or noncompliance history. There are 210 that have never been inspected.
2. Minority Populations –

Overland, Missouri	
1-mile	40%

The census data for this location indicates a minority percentage higher than the state average of 19%.

40393304

Superfund



3. Household Population with Income Below \$15,000 –

Overland, Missouri	
1-mile	13%

The census data for this location indicates a poverty percentage lower than the state average of 14%.

4. Other Census Info Table

Overland, Missouri	1-Mile	Missouri %
Housing Built before 1950	24%	32.3%
Age Under 5	9%	6.5%
Age Over 65	12%	14.7%
Non-English Speaking at Home	16%	5.9%

Programs should use the flexibility of their statutory authority to address potential EJ concerns as appropriate. Staff should also record the findings of this screen report in their appropriate programmatic databases and reports for future reference. Please contact the EJ Program if further assistance is needed or there are questions regarding the information provided. It is our goal to ensure fair treatment and meaningful involvement of all people. Thank you.

cc: Jamie Bernard-Drakey

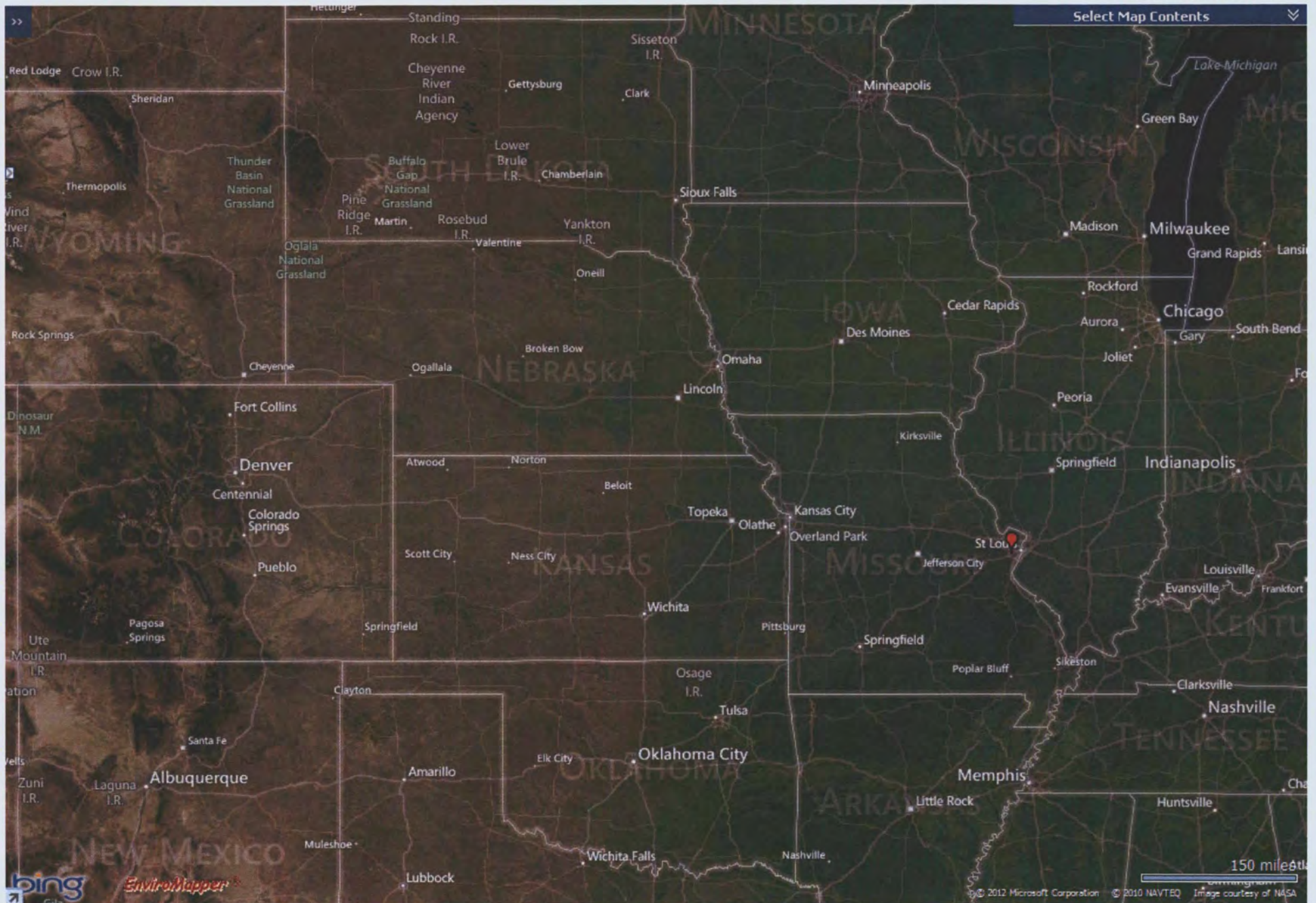
Attachments

1. Maps (4): Potential EJ Areas, Satellite Images
2. EJ SEAT Scores (included in PowerPoint)
2. Demographic Summary for 1-mile radius
3. Environmental Summary for 1-mile radius

State Satellite View



Chicago Heights
Chicago Heights Blvd & Elmridge Place
Overland, MO 63132

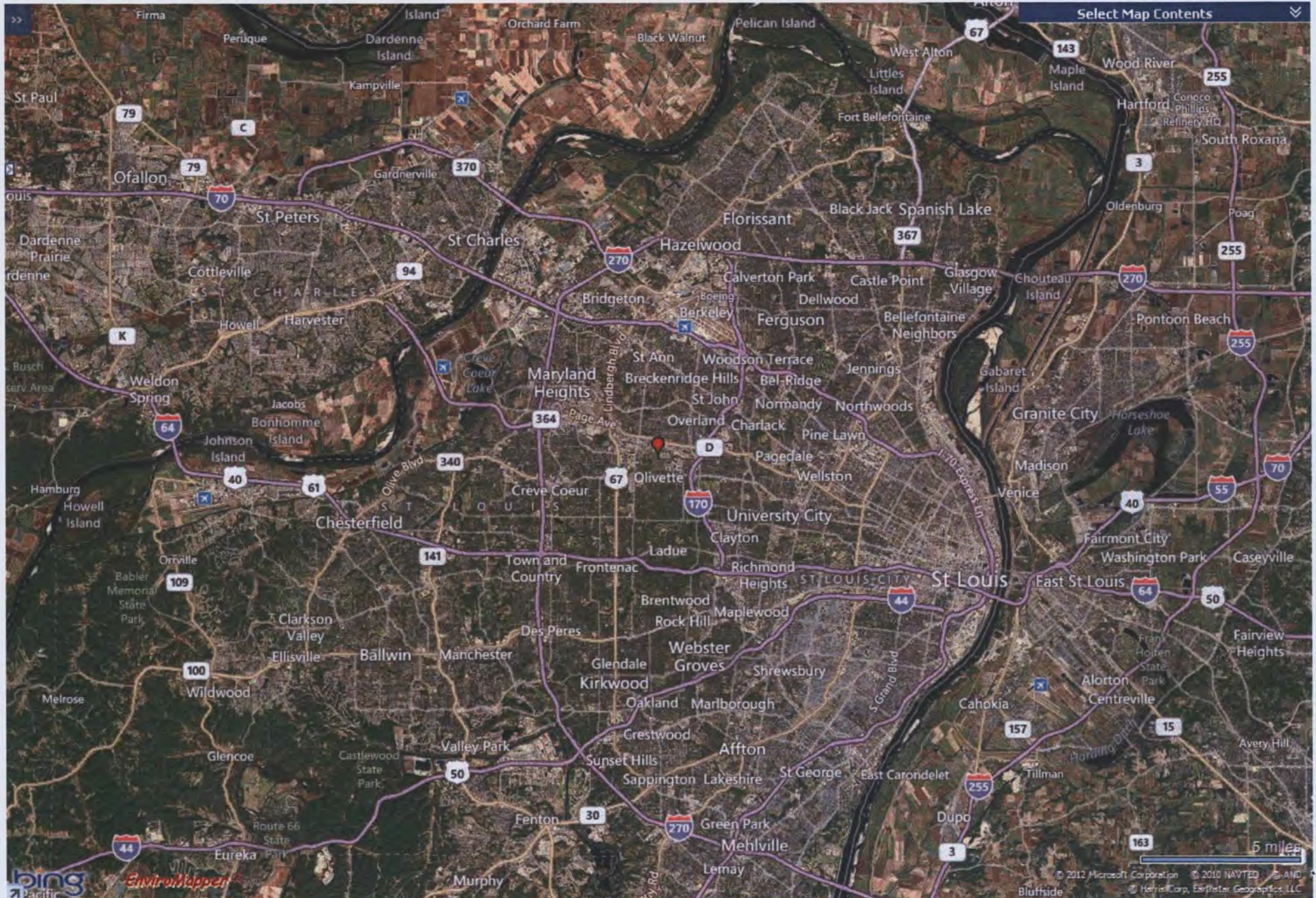


Community Satellite View

Chicago Heights
Chicago Heights Blvd & Elmridge Place
Overland, MO 63132



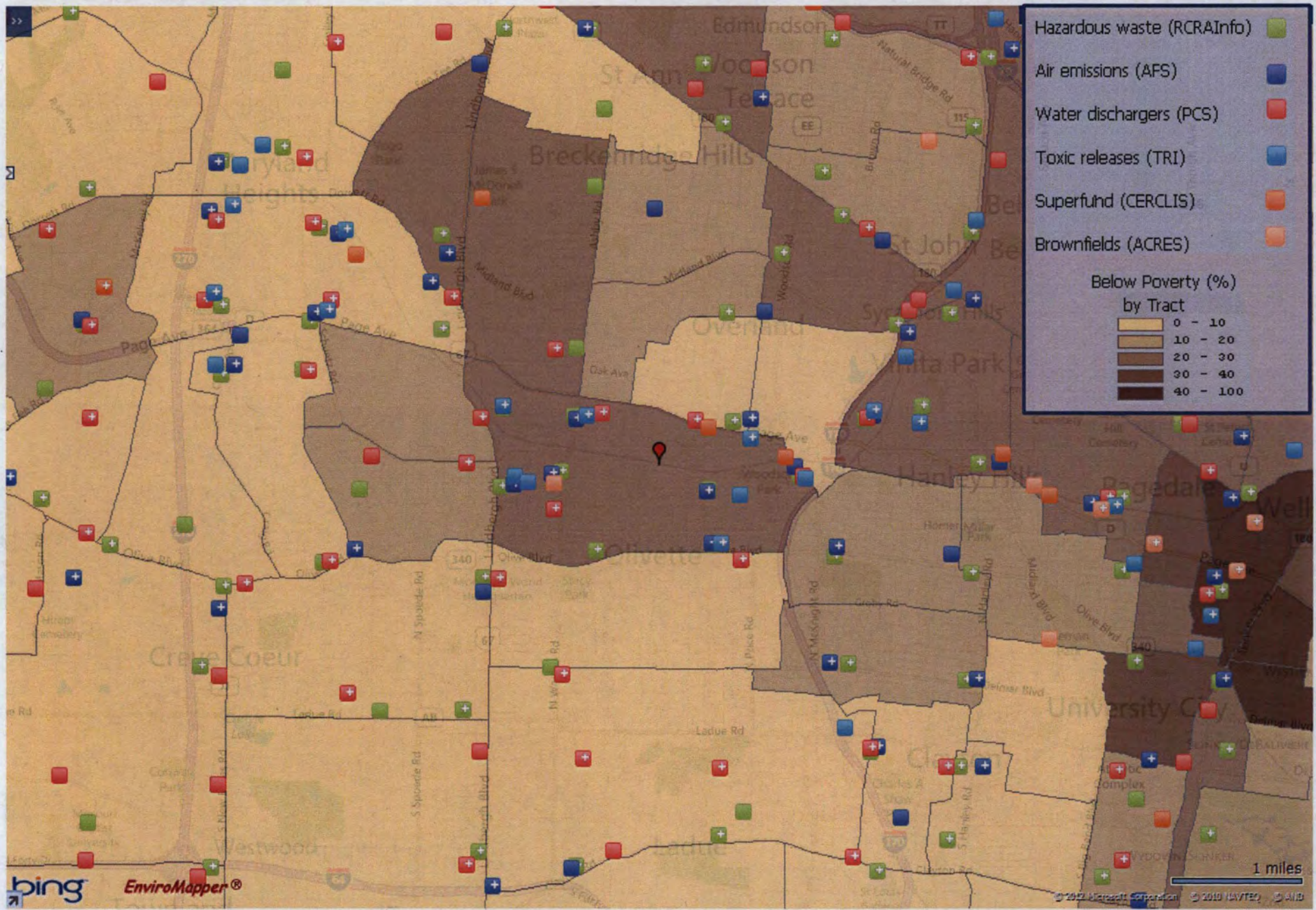
US EPA ARCHIVE DOCUMENT



Percent Poverty in Surrounding Area



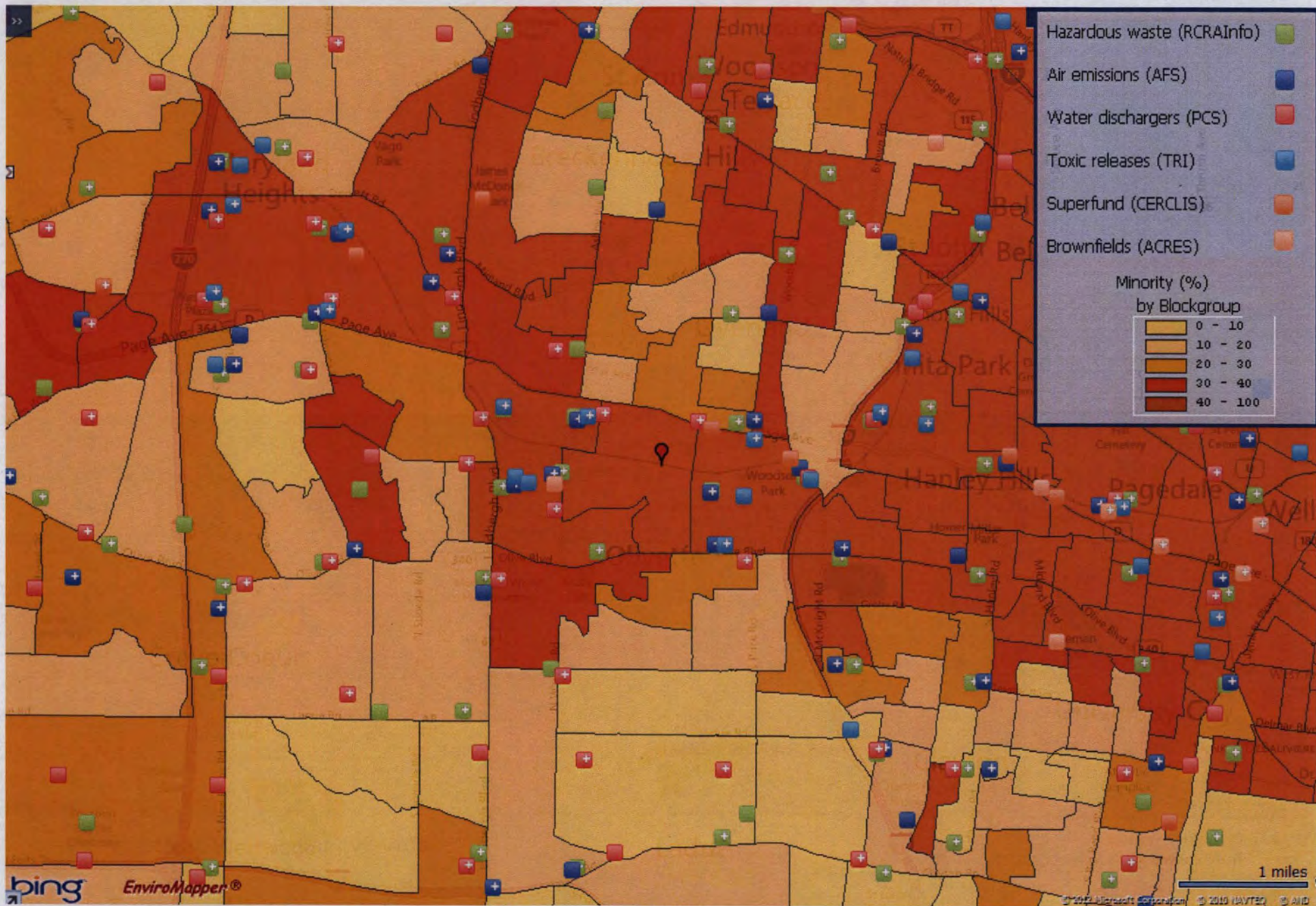
Chicago Heights
Chicago Heights Blvd & Elmridge Place
Overland, MO 63132




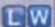
Percent Minority in Surrounding Area



Chicago Heights
Chicago Heights Blvd & Elmridge Place
Overland, MO 63132



EJ SEAT Score for Missouri Metals (facility located by Chicago Heights)

Facility Information <small>(select buttons next to the name to view additional reports - Legend)</small>		<u>Days Since</u> <u>Last</u> <u>Inspection</u>	<u>Qtrs in Non</u> <u>Compliance</u> <u>(3 yrs)</u>	<u># Effluent</u> <u>Exceedances</u> <u>(3 yrs)</u>	<u>Current</u> <u>SIC</u>	<u>Informal</u> <u>Enforcement</u> <u>Actions/NOVs</u> <u>(5 yrs)</u>	<u>Formal</u> <u>Enforcement</u> <u>Actions</u> <u>(5 yrs)</u>	<u>Penalties</u> <u>(5 yrs)</u>	<u>TRI</u> <u>Chemical</u> <u>Releases</u> <u>(lbs)</u>	<u>EJ Area of</u> <u>Concern</u>	<u>GHG</u> <u>Releases</u> <u>(metric tons</u> <u>CO2)</u>	<u>Percent</u> <u>Minority</u> <u>(3 mile</u> <u>radius)</u>	<u>Population</u> <u>Density</u> <u>(pop/mi²)</u> <u>(3 mile</u> <u>radius)</u>
MISSOURI METALS L.L.C. 9870 PAGE BOULEVARD SAINT LOUIS, MO 63132 FRS ID: 110015584795 	AFS: 2918900009	6485								2		29	3415
	ICP: MOR203320 	never		incomp dmr entry									
	NCD: I07#20030512M003T 1	1264											
	RCR: MOD006283808	1251				1							
	TRI: 63132GGKTR9970P	n/a							nr				



EJView ACS Summary Report



Location: -90.380080,38.684773

Study Area: 1 mile around the point location

	2006 - 2010 ACS Estimates	Percent	MOE (±)
Population 25+ by Educational Attainment			
Total	6,622	100%	310
Less than 9th Grade	305	5%	177
9th - 12th Grade, No Diploma	589	9%	177
High School Graduate	1,770	27%	131
Some College, No Degree	2,088	32%	217
Associate Degree	485	7%	119
Bachelor's Degree or more	1,870	28%	179
POPULATION AGE 5+ YEARS BY ABILITY TO SPEAK ENGLISH			
Total	8,991	100%	365
Speak only English	7,563	84%	292
Non-English at Home ¹⁺²⁺³⁺⁴	1,428	16%	316
¹ Speak English "very well"	784	9%	199
² Speak English "well"	356	4%	148
³ Speak English "not well"	173	2%	167
⁴ Speak English "not at all"	115	1%	174
³⁺⁴ Speak English "less than well"	287	3%	213
²⁺³⁺⁴ Speak English "less than very well"	644	7%	233
POPULATION AGE 5+ YEARS BY LANGUAGE SPOKEN AT HOME			
Total	N/A	N/A	N/A
Speak only English	N/A	N/A	N/A
Non-English Speaking	N/A	N/A	N/A
Population by Place of Birth for the Foreign-Born			
Total	N/A	N/A	N/A
Europe	N/A	N/A	N/A
Asia	N/A	N/A	N/A
Africa	N/A	N/A	N/A
Oceania	N/A	N/A	N/A
Americas	N/A	N/A	N/A
Households by Household Income in 1999			
Household Income Base	4,118	100%	166
< \$15,000	520	13%	117
\$15,000 - \$25,000	517	13%	161
\$25,000 - \$50,000	1,164	28%	180
\$50,000 - \$75,000	844	21%	128
\$75,000 +	1,074	26%	150
Occupied Housing Units by Tenure			
Total	4,118	100%	166
Owner Occupied	2,767	67%	122
Renter Occupied	1,352	33%	163

Data Note: Detail may not sum to totals dues to rounding. Hispanic population can be of any race. N/A means not available.

2006-2010 ACS 5-year Estimates: The American Community Survey (ACS) summary files provide nation-wide population and housing characteristic data at all Census summary levels down to the Block Group level. This data was collected between January 1, 2006 and December 31, 2010. ACS replaces the decennial census sample data, and is not the 2010 Census population counts data. (<http://www.census.gov/acs/www/#fragment-3>)

Margin of error (MOE): The MOE provides a measure of the uncertainty in the estimate due to sampling error in the ACS survey. Applying the MOE value yields the confidence interval for the estimate. For example, an estimate value of 50 and +/- MOE of 5 means the true value is between 45 and 55 with a 90 percent certainty (http://www.census.gov/acs/www/Downloads/data_documentation/Accuracy/MultiyearACSAccuracyofData2010.pdf). Maximum MOE is shown for each value within study area.

Source: U.S. Census Bureau, American Community Survey (ACS) 2006 - 2010.



EJView ACS Summary Report



Location: -90.380080,38.684773

Study Area: 1 mile around the point location

Summary of ACS Estimates	2006 - 2010
Population	9,868
Population Density (per sq. mile)	2,641
Minority Population	3,995
% Minority	40%
Households	4,118
Housing Units	4,518
Housing Units Built Before 1950	1,090
Per Capita Income	28,748
Land Area (sq. miles) (Source: SF1)	3.74
% Land Area	100%
Water Area (sq. miles) (Source: SF1)	0.00
% Water Area	0%

	2006 - 2010 ACS Estimates	Percent	MOE (±)
Population by Race			
Total	9,868	100%	431
Population Reporting One Race	9,589	97%	1,508
White	6,286	64%	419
Black	2,655	27%	316
American Indian	19	0%	114
Asian	595	6%	228
Pacific Islander	0	0%	114
Some Other Race	34	0%	317
Population Reporting Two or More Races	279	3%	175
Total Hispanic Population	480	5%	366
Total Non-Hispanic Population	9,388		
White Alone	5,873	60%	382
Black Alone	2,648	27%	316
American Indian Alone	19	0%	114
Non-Hispanic Asian Alone	565	6%	228
Pacific Islander Alone	0	0%	114
Other Race Alone	8	0%	114
Two or More Races Alone	275	3%	175
Population by Sex			
Male	4,586	46%	276
Female	5,282	54%	277
Population by Age			
Age 0-4	877	9%	174
Age 0-17	2,626	27%	219
Age 18+	7,242	73%	347
Age 65+	1,193	12%	151

Data Note: Detail may not sum to totals dues to rounding. Hispanic population can be of any race. N/A means not available.

Source: U.S. Census Bureau, American Community Survey (ACS) 2006 - 2010.

US EPA ARCHIVE DOCUMENT



EJView Environmental Report



Location: -90.380080,38.684773

Study Area: 1 mile around the point location

Sites and Facilities	Count
Air Facility System (AFS)	26
Superfund Sites (NPL)	1
Toxic Releases (TRI)	12
Hazardous Waste (RCRAInfo)	134
Water Dischargers (PCS & ICIS)	8
Brownfields (ACRES)	1
Radiation Information Database (RADInfo)	0
Toxic Substances Control Act (TSCA)	1

Environmental Concerns	Count
National Water Information System (NWIS) sites	0
STORage and RETrieval (STORET) sites	0
Impaired Streams	0
Impaired Waterbodies	0
National Parks	0

Places	Count
Schools	0
Hospitals	0
Worship Places	5

Data Note: Detail may not sum to totals due to rounding.

Source: Sites and facilities, EPA Envirofacts; NWIS, USGS; STORET, EPA; impaired streams and waterbodies, EPA NHD Plus; national parks, USGS National Atlas; schools, hospitals, and worship places; USGS GNIS.