

US EPA ARCHIVE DOCUMENT

Shaughnessy Number: 113501

Date Out of EAB: 2/4/88

TO: Lois A Rossi
Product Manager 21
Registration Division (TS-767C)

FROM: Patrick Holden, Team Leader *PWH*
Ground Water Team
Exposure Assessment Branch/HED (TS-769C)

THRU: Paul F. Shuda, Chief
Exposure Assessment Branch/HED (TS-769C) *Paul F. Shuda*

Attached, please find the EAB review of:

Reg./File #: 100-601

Chemical Name: Metalaxyl

Type Product: Fungicide

Company Name: CIBA-GEIGY

Purpose: Reported metalaxyl findings in ground water

Date Received: 1/26/88 ACTION CODE: 405

Date Completed: 2/2/88 EAB #(s): 80334

Monitoring study requested: Total Review Time: 0.1

Monitoring study voluntarily: X

Deferrals To: Ecological Effects Branch
 Residue Chemistry Branch
 Toxicology Branch

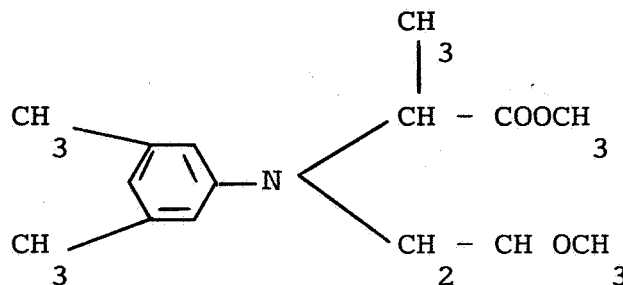
EVALUATION OF WELL INFORMATION FROM
MONITORING STUDIES FOR METALAXYL

1. CHEMICAL:

Chemical name: N-(2,6-Dimethylphenyl)-N-(methoxyacetyl)-
alanine methyl ester

Common name: Ridomil

Structure:



2. TEST MATERIAL:

Not Applicable.

3. STUDY/ACTION TYPE:

Evaluation of monitoring data.

4. STUDY IDENTIFICATION:

Title: Letter dated 10/8/87 from Karen Stumpf, Senior
Regulatory Specialist, CIBA-GEIGY to Lois Rossi,
Product Manager 21, U.S. EPA/OPP.

Submitted by: CIBA-GEIGY Corporation
Agricultural Division
P.O. Box 18300
Greensboro, NC 27419

Identifying No.: 100-601
Action Code: 405
Accession Number: Not given
Record Number: 212910
Date Sent to HED: 1/26/88

5. REVIEWED BY:

W. Martin Williams
Hydrologist
OPP/HED/EAB/Ground Water Team

Signature: W. Martin Williams
Date: 2/2/88

6. APPROVED BY:

Patrick Holden
Team Leader
OPP/HED/EAB/Ground Water Team

Signature: _____

Patrick Holden

Date: 4 FEB 1988

7. CONCLUSIONS:

Metalaxyl concentrations reported range from 0.23 to 1.40 ppb. These are among the first reported detections of metalaxyl in ground water.

8. RECOMMENDATIONS:

Results will be filed in EAB. Please defer to the Toxicology Branch on significance of findings. Additional information requested from registrant includes: suspected origin of contamination, well type, and depth to water.

Registrant states these results are part of an ongoing monitoring program. EAB requests a summary description of the monitoring program from the registrant to include (by county): well type, sampling period, sampling frequency, number of wells/number of positives, number of samples/number of positives, suspected origin of contamination, range of concentrations detected, and typical (eg., mean and median) positive found.

9. BACKGROUND:

Registrant states findings are from most recent round of sampling in ongoing monitoring project.

10. DISCUSSION:

Findings were detected using an N/P detector operating in the nitrogen specific mode. Registrant will confirm findings using gas chromatography. There is no indication from registrant that the findings result from a point source contamination. There is no data from registrant on well type or construction.