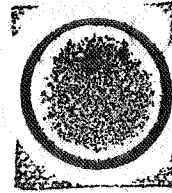


US EPA ARCHIVE DOCUMENT

#63



Coberly

AAtrex 90 W; Label safety review

4 SEP 1975

TB

R.J. Taylor, PM #25

EPA Reg. #100-LIL

Ciba-Geigy Corp.

Greensboro, N.C.

Registrant submits a new formulation containing 90% atrazine for substitution of the 80W formulation (Reg. #100-439) and supporting toxicity data. We summarize the data below:

<u>Species</u>	<u>Test</u>	<u>Result</u>	<u>Signs of Toxicity</u>
Rat	Acute oral LD ₅₀	1600 mg/kg	Some central depression.
Rabbit	Acute Dermal LD ₅₀	10.2Gm/kg	Transient edema; erythema
Rabbit	Eye irrita- tion	Draize score = 10.5/110	Minimally irritating.
Rabbit	Primary Skin irritation	Draize score = 0.5/8.0	Non-irritating
Rabbit	5 day dermal	Doses up to 1000 mg/kg only mildly irritating	Transient slight edema.
Rat	Acute Dust Inhalation	LC ₅ 1.3 mg/L	
Rat	Acute Aerosol Inhalation	LC ₅₀ 27 mg/L	

Recommendation:

The toxicity data provided for this new formulation (90% atrazine) support the label as submitted. We therefore have no objection to the label.

David L. Ritter, Toxicologist
Toxicology Branch

cc: Branch Reading File