

US EPA ARCHIVE DOCUMENT

Performance Track Final Progress Report

About Performance Track

The U.S. Environmental Protection Agency's National Environmental Performance Track program (Performance Track) was a public-private partnership that encouraged continuous environmental improvement through environmental management systems, community outreach, and measurable results. Performance Track was a voluntary approach to recognize and drive environmental excellence among private and public facilities by encouraging facilities with strong environmental records to go above and beyond their legal requirements. In partnership with EPA, members voluntarily set measurable goals to improve the quality of our nation's air, water, and land. Members included facilities of major corporations, small businesses, and public entities.

In March 2009, EPA decided to halt the Performance Track program. The program was in existence for almost nine years. This report summarizes highlights of the program including program growth, changes, and environmental results.

For more information on Performance Track and its members, please visit www.epa.gov/performance-track.

In 2008, despite the economic downturn across the country, Performance Track continued to grow. The program welcomed 84 new members in 2008, increasing the membership base to 547. Performance Track's renewal rate also remained very high at 85 percent. These sustained trends demonstrated

a commitment to improving environmental performance even when budgets are tight.

Over the life of the program, the combined environmental effort of all Performance Track member facilities has resulted in cumulative reported reductions of many environmental indicators, including reductions in water use by 2.87 billion gallons, greenhouse gas emission reductions of 366,948 metric tons of carbon dioxide equivalent, and conservation of 24,864 acres of habitat. Many of the members' achievements address issues that are not covered by current regulations.

Continuous improvement was a core value of Performance Track for both members and the program itself. Over the life of the program many changes to membership criteria and program implementation were made. In 2008, EPA received feedback from stakeholders indicating that additional structure and transparency in the process by which members select goals could increase program integrity and maximize environmental improvements at member facilities. As a result, the program developed new goal selection criteria and designated several key areas as core environmental indicators.

The introduction of challenge goals at the national and regional levels served as another way to maximize environmental improvements by focusing members' goal selection on national and regional priorities. Working with the Office of Water, Performance Track established a new challenge goal for protecting impaired waters from further degradation. Performance Track also collaborated with other EPA program offices to launch challenge goals for reducing greenhouse gas emissions and priority chemicals, and worked with a group of non-governmental organizations to create a challenge goal for enhancing and restoring habitat.

The Performance Track program coordinated closely with states as they developed and implemented complementary performance-based programs. New partnerships with Arizona and West Virginia were confirmed in 2008 through the signing of Memoranda of Agreement (MOA). In total, 14 states had signed MOA with EPA and more than 20 state-level performance-based programs are in operation across the country.

During its final year, Performance Track designated Xerox Corporation as a Corporate Leader based on the company's longstanding commitment to corporate environmental leadership. Other Corporate Leaders included Baxter Healthcare Corporation, Xanterra Parks and Resorts, Johnson & Johnson, and Rockwell Collins. EPA created the Performance Track Corporate Leader designation in 2004 as a way to recognize companies that exhibit environmental stewardship at the corporate level.

Performance Track Corporate Leaders offered the program's nearly 550 members a steady flow of ideas for improving performance and future goal selection based on their own leading practices. Along with the recognition that the program offered its members, this cross-pollination of ideas for best practices and innovation in environmental performance was central to the program membership.

EPA plans to advance the Agency's understanding of environmental leadership programs and inform its future efforts to recognize and drive environmental excellence through the creation of a subcommittee under the National Advisory Committee on Environment and Technology in 2009 and a study by the RAND Corporation to be completed in 2009.

Performance Track

a holistic approach to environmental improvement

Rather than focusing on just one specific pollutant or environmental issue, Performance Track worked with members to improve performance among a variety of environmental indicators, throughout the product lifecycle. The figure at right displays the indicators around which members set ambitious “stretch” goals, challenging them to innovate and develop new practices. Members’ cumulative results are displayed next to each indicator.

The results highlighted here cover the period 2000-2007 (the last year for which data were reported) for members that completed at least one three-year term in the program. Detailed results for all indicators, calculation methodology, and results caveats are available at www.epa.gov/performance-track/results.

UPSTREAM



Material Procurement

| | |
|----------------------------|-------------|
| Hazardous/Toxic Components | -192 tons ✓ |
| Recycled Content | -572 tons ✓ |



Suppliers’ Environmental Performance

-2,674 tons ✓

INPUTS



Material Use

| | |
|----------------------------------|-----------------|
| Materials Used | -48,888 tons ✓ |
| Hazardous Materials Used | +56,543 tons |
| Packaging Materials Used | +390 tons |
| Use of Reused-Recycled Materials | -301,808 tons ✓ |



Water Use

Total Water Used -2,871,860,883 gallons ✓



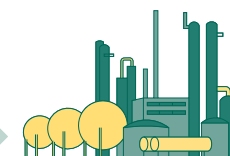
Energy Use

| | |
|-------------------------------|--------------------|
| Non-Transportation Energy Use | -6,701,303 MMBtu ✓ |
| Transportation Energy Use | +29,009 gallons |



Land and Habitat

Land and Habitat Conservation +24,864 acres ✓



CUMULATIVE IMPROVEMENTS
in perspective



Energy savings to power **73,000 homes** for one year



Greenhouse gas reductions to offset the emissions of **67,000 cars** for one year



Solid waste reductions equivalent to the amount produced by **576,000 households** for one year

Performance Track Members' Results 2000-2007

NONPRODUCT OUTPUTS



Air Emissions

| | |
|------------------|--|
| Greenhouse Gases | -366,948 metric tons of CO ₂ equivalent ✓ |
| VOCs | -4,884 tons ✓ |
| Air Toxics | -925 tons ✓ |
| Carbon Monoxide | -4 tons ✓ |
| NOx | -15,656 tons ✓ |
| PM-10 | +50 tons |
| SOx | -43,083 tons ✓ |
| Radiation | -814 curies ✓ |



Waste

| | |
|--------------------------------|-------------------|
| Non-Hazardous Waste Generation | -1,261,006 tons ✓ |
| Hazardous Waste Generation | -68,146 tons ✓ |



Discharges to Water

| | |
|---|----------------|
| Discharges of BOD, COD, TSS, Nutrients, Sediments | -35,581 tons ✓ |
| Discharges of Toxics | -3,361 tons ✓ |



Noise

| | |
|--|-----------|
| | -52 dBA ✓ |
|--|-----------|

DOWNSTREAM



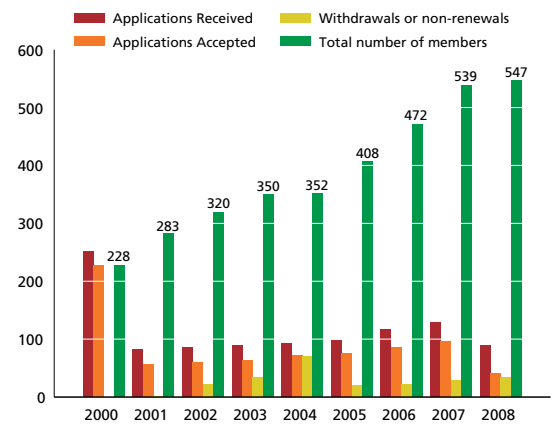
Products

| | |
|---|-------------|
| Expected Lifetime Waste from Product Use | -100 tons ✓ |
| Waste to Air, Water, Land from Disposal or Recovery | NA |

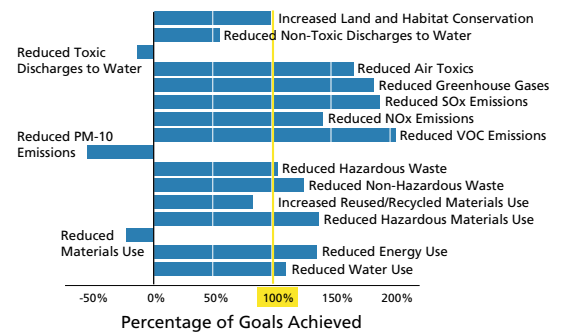
Key

- + Cumulative increase from baseline
- Cumulative decrease from baseline
- ✓ Improvement in performance
- NA No data were reported on this indicator by Performance Track members.

By the end of 2008, Performance Track had 547 members.



From 2000-2007, Performance Track members collectively made progress toward or exceeded nearly all of their goals.



Performance Track and Water

Many Performance Track members' achievements addressed issues that are vital to the health of our planet but not covered by current regulations. The use of water is one of these issues, and represents an area in which Performance Track members made significant improvements.

The use, reuse, and recycling of water have become critical areas of improvement for facilities across the United States. Not only must water be sourced carefully, it requires immense quantities of energy to treat and transport. To effectively manage this critical resource, Performance Track members implemented a variety of practices in water conservation, treatment, and reuse, through improvements made in the Water Use and Discharges to Water goal categories. Many members will continue these efforts even though the program has been halted.

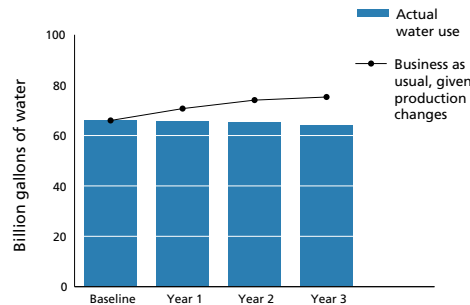
Selected Achievements by Performance Track Members

Total Water Use

- At its Ocotillo, Arizona, manufacturing and development facility, Intel has had an extensive water conservation and recycling program since the facility broke ground in the mid-1990s. Careful planning and collaboration with the City of Chandler gave Intel room to expand while ensuring that the area's water resources would be managed sustainably. Working with the city, Intel recharged approximately 1 billion gallons of municipal water back into the aquifer between 2002 and 2004. The facility also reuses treated water from the site and treated water from a nearby public-owned treatment plant for lawn and ground irrigation. Intel continues its efforts to reduce water use.
- DuPont Mt. Clemens in Mt. Clemens, Michigan, reduced its water use by nearly 3.5 million gallons from 2006 to 2007 through process improvements, improved treatment, and conservation measures. The facility also treated and reused water onsite in cooling towers. DuPont Mt. Clemens continues its efforts to reduce water use.
- Novozymes in Franklinton, North Carolina, reduced its water use by 35 percent between 2003 and 2006, on a

normalized basis, through the installation of improved water seal control systems on large vacuum pumps, improved water recycling systems for membrane filters, increased conservation by operators, and using alternative sanitizer that requires less water. Novozymes continues its efforts to reduce water use.

Together, 179 Performance Track members reduced their water use by 2.87 billion gallons.



Results cover the years 2000-2007 and include only members that set a goal for this indicator and completed at least one three-year membership term.

Discharge to Water

- Arizona Chemical in Savannah, Georgia, aimed to reduce discharges of biological oxygen demand (BOD) by 30 percent between 2002 and 2006 through installation of pre-screening equipment that will improve the recovery of oil from brine, significantly reducing losses of high-BOD material to the wastewater system. Arizona Chemical continues its efforts to reduce its BOD discharges and was also exploring a market for spent brine, which is now used by paper mills to recover saltcake.

Challenge Goals

Performance Track partnered with EPA's Office of Water to offer national challenge goals in water use reduction and reduction in discharges to impaired waters. Several EPA Regions also established challenge goals to reduce specific discharges to water:

- Region 2 challenged facilities to address nutrient discharges (phosphorous and nitrogen) and non-point sediment runoff into watersheds.
- In Region 3, facilities were challenged to reduce sediments from runoff, a specific set of toxic discharges, or a specific set of nutrients.

Alternate Goals

Members have also set alternate goals to protect watershed health. Examples of this work could include the following:

- Supporting collection and reporting of ambient water quality data.
- Decreasing impermeable pavement, installing "green" roofs, increasing bioretention, increasing on-lot treatment, using stormwater as a resource (e.g., for cooling water, irrigation water), and minimizing exposure of industrial chemicals or activities to the elements.

Kodak Colorado Division of Windsor, Colorado, set an alternate goal to monitor and analyze ambient water quality in the Cache La Poudre River. Little information exists about the ambient water quality for many U.S. waterbodies. Access to water quality data can enhance the understanding of the health of a river and inform decision-making about how to best protect it.

Kodak Colorado Division and other dischargers to segments of the Cache La Poudre River formed an ambient water quality monitoring group in cooperation with the Colorado Department of Public Health and Environment. In 2007, the group developed the monitoring plan and signed an official agreement to provide ambient water quality monitoring. This group will provide coordinated and accurate data about the water quality along 45 river miles year round, which will be available to members of the monitoring group, regulators, and the public.

Performance Track Members as of 2009

Performance Track Corporate Leaders

Baxter Healthcare Corporation
Johnson & Johnson
Rockwell Collins
Xanterra Parks and Resorts
Xerox Corporation

173rd Fighter Wing, Kingsley Field,
 Air National Guard*
 3M Alexandria
 3M Brownwood*
 3M Columbia Missouri
 3M Company - Austin Research Boulevard Site
 3M Company - Valley
 3M Company, Aberdeen
 3M Company, Brookings
 3M Cordova
 3M Cumberland
 3M Cynthia
 3M Decatur
 3M ESPE*
 3M Guin*
 3M Knoxville IA
 3M Menomonee
 3M Nevada
 3M New Ulm*
 3M Petaluma
 3M Prairie du Chien
 3M Unitek Corporation - Monrovia, California
 Aaron Oil Company, Inc.*
 ACL Transportation Services LLC
 Acushnet Rubber Co., Inc., D/B/A PRECIX*
 Advanced Sterilization Products**
 AFCO (Associated Fuel Pump Systems Corporation)
 Akzo Nobel Aerospace Coatings*
 Alliant Techsystems Inc., Lake City
 Ammunition Division
 Aloe Vera of America, Inc.
 American Synthetic Rubber Company, LLC
 Analog Devices, Inc. -
 Wilmington Manufacturing
 Andersen Corporation*
 Applied Materials
 Arizona Chemical - Dover, Ohio
 Arizona Chemical - Panama City
 Arizona Chemical - Pensacola
 Arizona Chemical - Port St. Joe Plant
 Arizona Chemical- Savannah, GA
 ASMO North Carolina, Inc
 Aspen Skiing Company
 Atlas Copco Drilling Solutions LLC
 Badlands Inn, LLC
 BAE SYSTEMS Controls
 BAE SYSTEMS Information and
 Electronic Systems Integration*
 Baker Petrolite - Rayne Blend Plant*
 Baker Petrolite- Houston Blend Plant
 Ball Metal Beverage Container Corp.
 "Golden Facility"
 Bandelier Trading Company
 Barksdale Air Force Base
 BASF Corporation - Belvidere, NJ
 Bath Iron Works
 Battelle Columbus Ohio*
 Baxter Caribe, Inc.**
 Baxter Healthcare - Cleveland, MS†
 Baxter Healthcare - McGaw Park†
 Baxter Healthcare - Round Lake
 Technology Park†
 Baxter Healthcare - Tampa (Largo)†
 Baxter Healthcare Corp Thousand Oaks†
 Baxter Healthcare Corp. of Puerto Rico,
 Jayuya Facility†
 Baxter Healthcare Corporation, Irvine, CA†
 Baxter Healthcare Corporation,
 Mountain Home, AR†

Baxter Healthcare of Puerto Rico**
 Baxter Pharmaceutical Solutions, LLC†
 Baxter/Hayward†
 Bay County Waste to Energy Facility
 Bentley Prince Street, Inc.
 BFGoodrich Tire Manufacturing-Opelika, AL
 BFGoodrich Tire Manufacturing-
 Tuscaloosa, AL
 Big Bend Resorts/Chisos Mountains Lodge
 BioSense Webster, Inc.**
 Blue Ridge Paper Products - Canton Mill
 BMW Manufacturing Co., LLC.*
 Boise White Paper LLC - Wallula
 Boston Scientific - Maple Grove
 Weaver Lake Campus
 Bridgestone/Firestone North American Tire
 LLC - Wilson, NC
 Bridgestone/Firestone North American Tire
 LLC - Warren County*
 Bridgestone/Firestone North American Tire
 LLC - Bloomington, IL
 Bridgestone/Firestone North American Tire
 LLC - LaVergne
 Bridgestone/Firestone South Carolina*
 Bristol-Myers Squibb Company*
 Bristol-Myers Squibb PRI - Wallingford, CT
 Brookhaven National Laboratory
 Brooklyn Navy Yard Cogeneration Partners
 Calville Bay Resort & Marina
 Capulin Volcano National Monument
 Cardone Industries, Inc.
 Caribbean Refrescos Inc.
 CCDA Waters, LLC
 Centocor, Inc.**
 Charleston Air Force Base
 Chesterfield County Waste and
 Resource Recovery
 Chicago White Metal Casting, Inc.*
 Ciba Specialty Chemicals Corporation,
 Newport Site*
 City of Dallas
 City of Lawrence Wastewater Utility
 City of Manassas Maintenance Garage
 City of Scottsdale
 Coca-Cola North America - Apopka, FL
 Coca-Cola North America - Columbus
 Syrup Plant
 Coca-Cola North America - Dallas Syrup Plant
 Coca-Cola North America - Dunedin Facility
 Coca-Cola North America - Lehigh Valley Plant
 Coca-Cola North America - Ontario
 Syrup Plant
 Coca-Cola Northampton
 Colonial Acres Golf Course
 Columbia Vista - Evergreen
 Columbia Vista - Fruit Valley
 Comanche Peak Nuclear Power Plant
 Concurrent Technologies Corporation*
 Consumer Products Company†
 Cordis Corp.**
 Cordis Corporation**
 Cordis Neurovascular, Inc.**
 Corning Wilmington Optical Fiber Facility
 Cottonwood Cove Resort & Marina
 Covanta Babylon Inc.
 Covanta Bristol, Inc.
 Covanta Company of Southeastern
 Connecticut
 Covanta Fairfax, Inc.
 Covanta Haverhill, Inc.
 Covanta Hempstead Company
 Covanta Hennepin Energy
 Resource Company, L.P.
 Covanta Hillsborough, Inc.
 Covanta Honolulu Resource Recovery Venture
 Covanta Huntington, LP
 Covanta Huntsville, Inc.
 Covanta Indianapolis, Inc.
 Covanta Kent, Inc.
 Covanta Lake II, Inc.
 Covanta Lee, Inc.
 Covanta Marion, Inc.
 Covanta Mid-Connecticut, Inc.
 Covanta Montgomery, Inc.
 Covanta Niagara

Covanta of SEMASS
 Covanta Onondaga LP
 Covanta Pasco
 Covanta Projects of Wallingford
 Covanta Stanislaus, Inc.
 Cutler Hammer Electrical Co.
 Cytec Clean Inc.
 Dallas/Fort Worth International Airport
 Dassault Falcon Jet Corp - Little Rock
 Decker Manufacturing Corporation
 Defense Supply Center Richmond
 Delta Faucet Company of Tennessee
 DENSO Manufacturing Michigan, Inc.*
 Denver International Airport
 DePuy Orthopaedics, Inc.**
 DePuy, Inc.**
 Doughton Park Bluffs Lodge Forever Resorts
 Dow West Virginia Operations,
 South Charleston Site
 DPP - Griffin
 DuPont - Spruance Plant
 DuPont EKC Technology
 DuPont Fort Madison Plant
 DuPont Front Royal
 DuPont Mt Clemens Plant
 Durango-McKinley Paper Company*
 Dyess Air Force Base
 E & T CONTROLS, INC.
 Eaton Corporation Kearney Nebraska,
 MDH Company
 Eaton Hydraulics
 Eaton Hydraulics Operation - Searcy, Arkansas
 Elanco Augusta Technology Center
 Ellsworth Air Force Base
 Elmendorf Air Force Base
 EMCO Enterprises, Inc
 Endicott Interconnect Technologies, Inc.*
 EPA Mid-Atlantic Regional Office Facility
 Epic Resins
 Epon Portland Inc.*
 ETHICON - San Angelo**
 Ethicon Endo-Surgery, Albuquerque NM**
 Ethicon Endo-Surgery, Inc.**
 ETHICON LLC**
 ETHICON, Inc.**
 Ethicon, Inc.**
 Evelyn Hill Inc
 Evergreen Packaging Incorporated -
 Pine Bluff Mill
 Evonik Cyro LLC
 Fairchild Semiconductor Corporation
 Fairholme Store & Marina
 Federal-Mogul - Boyertown
 Fenwal Blood Technologies
 Fenwal Blood Technologies, Maricao PR
 Filtrona Extrusion
 Firestone Agricultural Tire Company*
 Firestone Building Products - Aurora
 Firestone Building Products - Corsicana
 Firestone Building Products Company -
 DeForest
 Firestone Building Products Company -
 Salt Lake
 Firestone Building Products Company -
 Youngwood
 Forever Resorts - Corporate Office
 Forever Resorts as Black Canyon/
 Willow Beach River Adventures
 Forever Resorts at Grand Canyon Lodge
 Forever Resorts Badlands Lodge, LLC
 Forever Resorts Fun Country Marine Industries
 Forever Resorts Rocky Mountain Park Inn
 Forever Resorts Sun Country Marine West
 Forever Resorts-Rocky Mountain Park Company
 Fort Benning
 Fort Lewis, Public Works
 Fraser Papers Ltd
 FRC East
 FRC Southwest
 Freescale Semiconductor, Inc. - Chandler
 Freescale Semiconductor, Inc. - Tempe
 Freescale Semiconductor, Inc., Ed Bluestein
 Freescale Semiconductor, Inc., Oak Hill
 Frito-Lay, Inc. - Rancho Cucamonga, CA
 Frito-Lay, Inc. - Canton, Ohio

Frito-Lay, Inc. - Gothenburg, NE
 Frito-Lay, Inc. - Jonesboro, AR
 Frito-Lay, Inc. - Orlando, FL
 Frito-Lay, Inc. - Pulaski, TN
 Frito-Lay, Inc. - Wooster, Ohio
 Frito-Lay, Inc. - Sidney, Illinois
 FUJIFILM Hunt Chemicals U.S.A., Inc.*
 FUJIFILM Hunt Chemicals U.S.A., Inc. -
 Dayton, TN
 Furnace Creek Inn & Ranch Resort†
 Georgia-Pacific Chemicals, LLC - Albany, OR
 Georgia-Pacific Chemicals, LLC - Vienna, GA
 Georgia-Pacific Chemicals, LLC - Russellville, SC
 Georgia-Pacific Chemicals, LLC - Conway, NC
 Georgia-Pacific Chemicals, LLC - Columbus, OH
 Gerdau Ameristeel Wilton
 Global Pharmaceutical Supply Group Vacaville†
 Goss International Americas INC.
 Fort Worth Operations
 Grand Canyon National Park Facility
 Management Division
 Grand Teton Lodge Company
 Grundfos Pump Manufacturing Corporation*
 Gwaltney of Smithfield, Ltd.
 Health Care Systems Inc.**
 Henkel Corporation, Seabrook, NH*
 Hewlett Packard Caribe BV
 Hewlett Packard Corvallis Oregon Site
 Hewlett Packard-Boise Site
 Hitachi Automotive Products
 Hunter Douglas Tupelo Center
 Hurricane Ridge Lodge
 IBM - Burlington*
 IBM - Thomas J Watson Research Center
 Ideal Jacobs Corporation
 Indiantown Cogeneration L.P.*
 Intel Arizona - Ocotillo Campus
 Intel Corporation - DuPont Campus
 Intel Corporation - New Mexico
 Intel Massachusetts, Inc.
 InterfaceFABRIC, Inc., Guilford Facility*
 InterfaceFLOR, LLC
 International Paper - Franklin Mill
 International Paper - Vicksburg Mill
 International Paper - Courtland Mill
 International Paper - Eastover Mill
 International Paper - Georgetown Mill
 International Rectifier - El Segundo
 International Truck and Engine Corporation*
 INX International Ink Co
 Isle Royale Resorts
 Itron Inc.
 J&J - Merck Consumer Pharmaceuticals**
 Janssen Ortho LLC**
 Janssen Pharmaceutica**
 John Crane, Inc. Cranston, RI Division
 John Deere Davenport Works
 John Deere Thibodaux
 John Zink Company LLC
 Johnson & Johnson Pharmaceutical
 Research & Development, L.L.C., La Jolla**
 Johnson & Johnson Pharmaceutical
 Research & Development, L.L.C.**
 Johnson & Johnson World Headquarters**
 Karl Schmidt Unisia, Inc. Fort Wayne Facility
 Karl Schmidt Unisia, Inc. Marinette Facility
 Kent County Regional Wastewater
 Treatment Facility
 King Industries, Inc.
 Kodak Colorado Division
 Lafarge Aggregates SE - Douglasville Quarry*
 Lake Amistad Resort And Marina
 Lake Crescent Lodge
 Lake Don Pedro Marina, LLC
 Lake Mead RV Village
 Lake of the Ozarks Marina
 Lake Oroville Marina, LLC
 Lake Roosevelt Vacations, Inc.
 Lehigh Technologies of GA
 LifeScan LLC**
 LifeScan, Inc.**
 LifeSpan Technology Recycling- Denver, CO
 Lincoln Industries
 Lockheed Martin -
 Maritime Security & Ships Systems

US EPA ARCHIVE DOCUMENT

Performance Track Members as of 2009, continued

- Lockheed Martin
Aeronautics Company - Fort Worth
Lockheed Martin
Aeronautics Company - Marietta
Lockheed Martin
Aeronautics Company - Palmdale
Lockheed Martin Maritime Systems and Sensors, Liverpool, NY*
Lockheed Martin Maritime Systems and Sensors, Manassas, VA*
Lockheed Martin Missiles and Fire Control
Lockheed Martin Missiles and Fire Control - Dallas Operation
Lockheed Martin Missiles and Fire Control - Orlando
Lockheed Martin MS2, Moorestown, NJ*
Lockheed Martin
Space Systems Company, Watertown Plant*
Lockheed Martin Systems Integration-Owego*
L'Oreal USA - Piscataway Manufacturing
Louisiana Pacific - Middlebury, Indiana
Louisiana-Pacific Corporation,
Carthage OSB Plant
Louisiana-Pacific, Hanceville OSB
Louisiana-Pacific, Houllon OSB
Louisiana-Pacific, Jasper OSB
Louisiana-Pacific, Roxboro
Louisiana-Pacific, Tomahawk,
Engineered Wood Siding
Louisiana-Pacific, Two Harbors,
Engineered Siding
Louisiana-Pacific, Wilmington EWP
Lyman Morse Boatbuilding
Mabry Mill / Rocky Knob Cabins
MacArthur Waste to Energy
Madison Chemical Co., Inc.*
Madison Precision Products
owned by the METTS Corporation
Maker's Mark Distillery, Inc.
Mammoth Cave Hotel
Management and Engineering Services LLC
Marathon Petroleum Company -
Louisiana Refinery Division
Marathon Petroleum Company, LLC -
Corporate Office
Marina at Lake Meredith
McNeil Consumer & Specialty
Pharmaceuticals**
McNeil Consumer Healthcare**
McNeil PPC**
MD Anderson Cancer Center
Memory Experts International, Inc.
Michelin NA - Sandy Springs (US2)
Michelin NA - Starr (US8)
Michelin North America - Norwood, MATC
Michelin North America -
Spartanburg Manufacturing
Michelin North America, Inc. - Ardmore, OK
Michelin North America, Inc. - US4 Dothan, AL
Michelin North America, Inc. Greenville
Manufacturing Facility, US1
Michigan Waste Energy, Inc.
Micron Technology, Inc. - Boise Site
Micron Technology, Virginia
Milgard Pultrusion
Minot Air Force Base
Moccasin Point Marina LLC.
Mohawk Fine Papers Inc. - Beckett Mill
Monadnock Paper Mills, Inc.
Monsanto Company - Luling, LA Facility*
Monsanto Company - Muscatine, Iowa Plant*
Montenay Energy Resources of
Montgomery County, Inc.*
Mormon Lake Properties LLC /
Mormon Lake Lodge
Motorola ILO2*
NASA Ames Research Center
National Manufacturing Company,
a division of Stanley Works
Naval Air Engineering Station
Naval Undersea Warfare
Center Division, Newport
Nellis Air Force Base
Nestle Confections & Snacks Division
Nestlé USA - Beverage Division, Jacksonville, IL
- New Hampshire Ball Bearings, Inc.*
New Hampshire Ball Bearings, Inc.,
New Hampshire Ball Bearings, Inc.,
Astro Division
NewPage Duluth Mill
Newport Computer Service Inc.
Nitinol Devices and Components**
Noramco-Athens**
Northrop Grumman St. Augustine Site
Novozymes North America, Inc.
Nucor Steel - Nebraska
Nucor Steel Auburn Inc
Oak Ridge National Laboratory - U.S DOE
Olin Chlor Alkali Charleston
Ortho Biologics, LLC**
Ortho Pharmaceuticals,
a division of Janssen Ortho LLC**
Ortho-Clinical Diagnostics**
Ortho-Clinical Diagnostics**
Ortho-McNeil Pharmaceutical**
Osram Sylvania Products Inc.
Pacific Northwest National Laboratory
Port 500 Facility, Philip Morris USA
PerkinElmer Optoelectronics*
Pfizer Incorporated Terre Haute
Pfizer Pharmaceuticals LLC
Pfizer Pharmaceuticals LLC - Caguas Operations
Pfizer Pharmaceuticals LLC - Vega Baja, PR
Pfizer, Inc - Franklin, OH
Pfizer, Inc - Lincoln, NE
Pfizer, Inc - White Hall
Pfizer, La Jolla Laboratories
Pictorial Offset Corporation
Pine Grove Landfill, Inc.
Pinewood Cove Resort
PING
Pittsburgh Glass Works, LLC - Works 8
Port of Houston Authority
Barbours Cut Terminal
Port of Houston Authority Central
Maintenance Facility
Portland VA Medical Center
Pratt & Whitney - Cheshire
Pratt & Whitney - HMI - Clayville
Pratt & Whitney - North Berwick Parts Center
Pratt & Whitney /
Pratt & Whitney Rocketdyne - Florida
PRIZIM Inc.
PRO-TEC COATING COMPANY
Pull-A-Part of Conley, LLC
Pull-A-Part of Norcross, LLC
Qimonda North America
Raymond-Muscatine Inc.
Raytheon, Aurora
Reaxis Incorporated
Republic Metals Corporation
Ricoh Electronics, Inc. - Georgia Facility
Ricoh Electronics, Inc. - OMG
Ricoh Electronics, Inc. - RSG / TMG, Ca.
Rio Grande Village Store & RV Park
Robert J. Dole VA Medical &
Regional Office Center
Roche Colorado Corporation
Rockwell Collins Avionics,
Melbourne Campus†
Rockwell Collins Inc. - Wichita Service Center†
Rockwell Collins, Inc. - 35th Street Operations†
Rockwell Collins, Inc. - Bellevue Operations**
Rockwell Collins, Inc. - C Avenue Operations†
Rockwell Collins, Inc. - Coralville Operations**
Rockwell Collins, Inc. - Decorah Operations**
Rockwell Collins, Inc. -
Manchester Operations**
Rockwell Collins: Dallas Service Center†
Rohm and Haas - Kankakee Polymer Plant*
Rohm and Haas Electronic Materials, LLC*
Rohm and Haas - La Mirada Plant
Rough Canyon Marina LLC
Sandia National Laboratories
SavATree
Schering-Plough Animal Health Corporation -
Baton Rouge
Schering-Plough HealthCare Products, Inc.
Schering-Plough Products, L.L.C.
Las Piedras Operations
- SEH America
Sensata Technologies*
Seymour Johnson Air Force Base
Shaw Plant 13
Shaw Plant 15X
Shaw Plant Z
Sheppard Air Force Base
Signal Mountain Lodge
Siltronic Corporation*
Smithfield - Elon
Smithfield Transportation Co - Tar Heel
Smithfield Transportation Co.
Smithfield Division
Southco, Inc - Honeoye Falls Facility
Southfork Asset Management
Southfork Ranch
Spartan Steel Coating
Spartech Plastics
Spartech Plastics - Arlington Texas
Spartech Plastics, LLC
Spartech Polycrom Donora Plant 1
Spartech Polycom-Lockport, NY
Standard Aero San Antonio, Inc.
Stanley Fastening Systems
Stanley Hydraulic Tools
Stanley Tools Cheraw
Stanley Tools New Britain Plant
Stanley Tools Pittsfield Plant
Swiss Re - Armonk
Symmetry Medical - New Bedford*
TABC, Inc.
Taft Manufacturing Company*
TDK Components USA, Inc.*
TEC1
Temple Inland-Maysville Paper Mill
Tenneco Automotive Operating Company, Inc.
Teradyne, Inc. - NR*
The Coca-Cola Company - Truesdale
The Goodyear Tire & Rubber Company -
Topeka Plant
The Stanley Works-Customer Support Division
Toshiba International Corporation
TOTO USA, INC.
TOYOTA MOTOR MANUFACTURING
KENTUCKY, INC.
Toyota Motor Manufacturing
West Virginia, Inc.
Toyota Motor Manufacturing, Indiana
Trinity Center Marina
Trinity Lake Resort & Marina
Tyco Healthcare Group LP, Ludlow
U.S. Borax, Inc., Owens Lake Operations*
U.S. Borax, Inc.-Boron Operation
U.S. Coast Guard Air Station Cape Cod*
U.S. Department of Energy & DynMcDermott
Petroleum Operations Company*
U.S. Department of Energy,
West Valley Demonstration Project*
U.S. FAA Mike Monroney Aeronautical Center
U.S. Postal Service - Hartford Processing and
Distribution Center*
U.S. Postal Service - Hartford Vehicle
Maintenance Facility*
U.S. Postal Service - Seattle Bulk Mail Center
U.S. Postal Service - South Sound
Distribution Delivery Center
U.S. Postal Service Albany New York Vehicle
Maintenance Facility
U.S. Postal Service Albany, New York
Processing and Distribution Center
U.S. Postal Service Binghamton NY Vehicle
Maintenance Facility
U.S. Postal Service Binghamton, New York
Processing and Distribution Facility
U.S. Postal Service Bridgeport CT Post Office
U.S. Postal Service Brockton Processing
Distribution Center
U.S. Postal Service Brockton Vehicle
Maintenance Facility
U.S. Postal Service Buffalo New York
Processing and Distribution Center
U.S. Postal Service Buffalo New York
Vehicle Maintenance Facility
U.S. Postal Service Cambridge MA
Central Square Post Office
- U.S. Postal Service Central Massachusetts
Processing and Distribution Center
U.S. Postal Service Eastern Maine Processing
and Distribution Facility
U.S. Postal Service Elmira New York
Vehicle Maintenance Facility
U.S. Postal Service Manchester, NH
Vehicle Maintenance Facility
U.S. Postal Service New Haven CT
Vehicle Maintenance Facility
U.S. Postal Service Portsmouth, NH
Processing and Distribution Facility
U.S. Postal Service Providence Rhode Island
Vehicle Maintenance Facility
U.S. Postal Service Rochester New York
Vehicle Maintenance Facility
U.S. Postal Service Rochester, New York
Processing & Distribution Center
U.S. Postal Service Schenectady, NY
Main Office
U.S. Postal Service Southern Connecticut
Processing and Distribution Center
U.S. Postal Service Southern Maine
Processing and Distribution Center
U.S. Postal Service Spokane
Processing and Distribution Center
U.S. Postal Service Springfield MA
Vehicle Maintenance Facility
U.S. Postal Service Springfield, MA Bulk Mail
Center and Processing & Distribution Center
U.S. Postal Service Stamford CT
Processing and Distribution Center
U.S. Postal Service Stamford CT
Vehicle Maintenance Facility
U.S. Postal Service Syracuse New York
Processing & Distribution Center
U.S. Postal Service Syracuse New York
Vehicle Maintenance Facility
U.S. Postal Service Tacoma Mail
Processing and Distribution Center
U.S. Postal Service Utica New York
Processing and Distribution Facility
U.S. Postal Service Utica New York
Vehicle Maintenance Facility
U.S. Postal Service Waterbury
Vehicle Maintenance Facility
University of Texas Medical Branch
UPM - Blandin Mill
V&M STAR - Houston
V&M STAR - Youngstown
Valvoline
Vectron International, Inc.
Vermeer Corporation
Verso Paper, Androscooggin Mill*
Verso Paper, Bucksport Mill
Vistakon**
WaferTech LLC
Washington Group International - ANCDF
Washington State University
Xanterra at Crater Lake National Park†
Xanterra at Mt. Rushmore National Memorial†
Xanterra at Rocky Mountain National Park†
Xanterra Parks & Resorts at
Bryce Canyon Lodge†
Xanterra Parks & Resorts at
Yellowstone National Park†
Xanterra Parks & Resorts at Zion Lodge†
Xanterra South Rim, L.L.C.†
Xerox - Webster, NY†
Xerox Corporation - Cincinnati, OH†
Xerox Corporation - El Segundo†
Xerox Office Group - Wilsonville†
Xerox Oklahoma City Supplies
Manufacturing Plant†
Yamaha Motor Manufacturing
Corporation of America
Yankee Freedom II - Dry Tortugas
National Park Ferry
YSI Incorporated*