

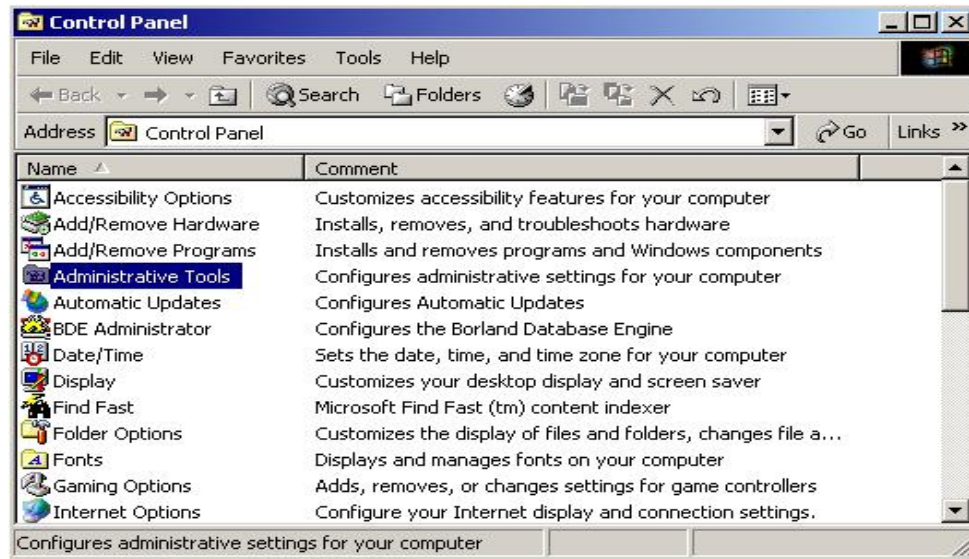
## **Contents**

**I. Linking MySQL tables from MS ACCESS (includes ODBC usage) ..... p. 2**

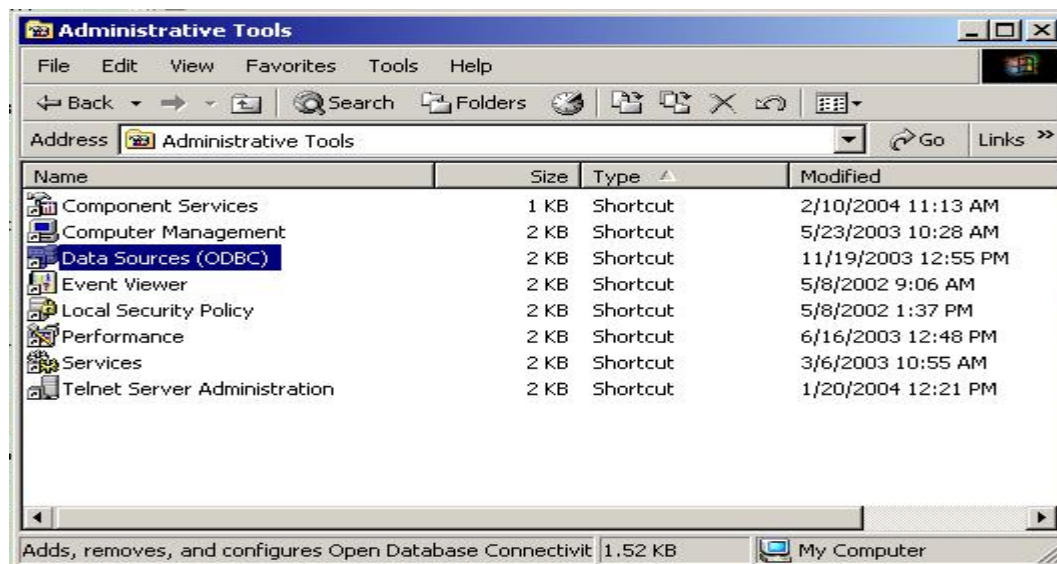
**II. Accessing MOVES MySQL databases using Microsoft Excel 97 ..... p.11**

## Linking MySQL tables from MS ACCESS

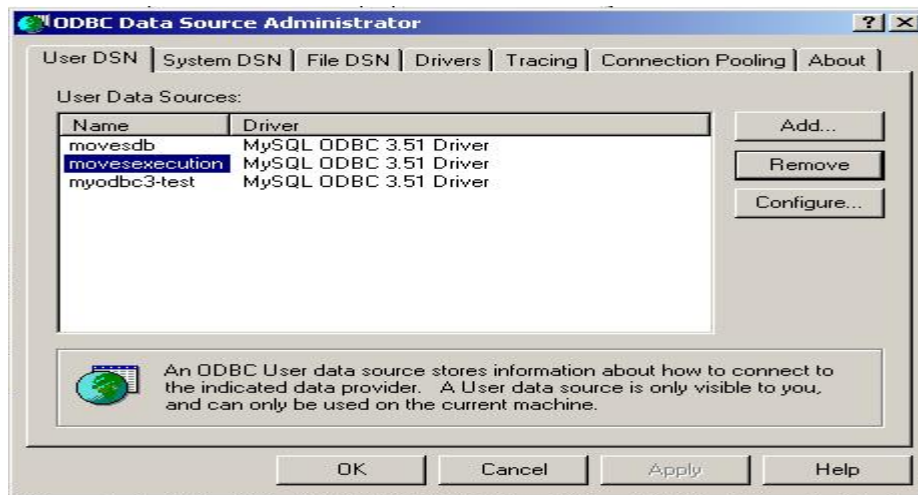
1. Install MySQL driver, MyODBC-3.51.06.exe.
2. Create an ODBC data source named the same as the folder which corresponds to the MySQL database.
  - (i.) In the control panel select administrative tools :



- (ii.) In the administrative tools select Data Sources (ODBC) :



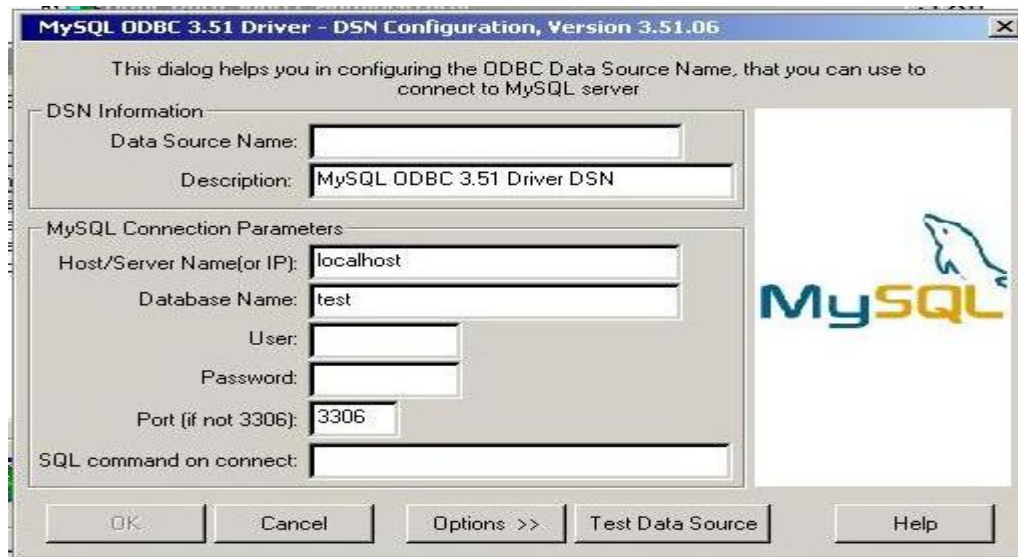
- (iii.) In the ODBC Data Source Administrator dialog choose to “Add” a “User Data Source”



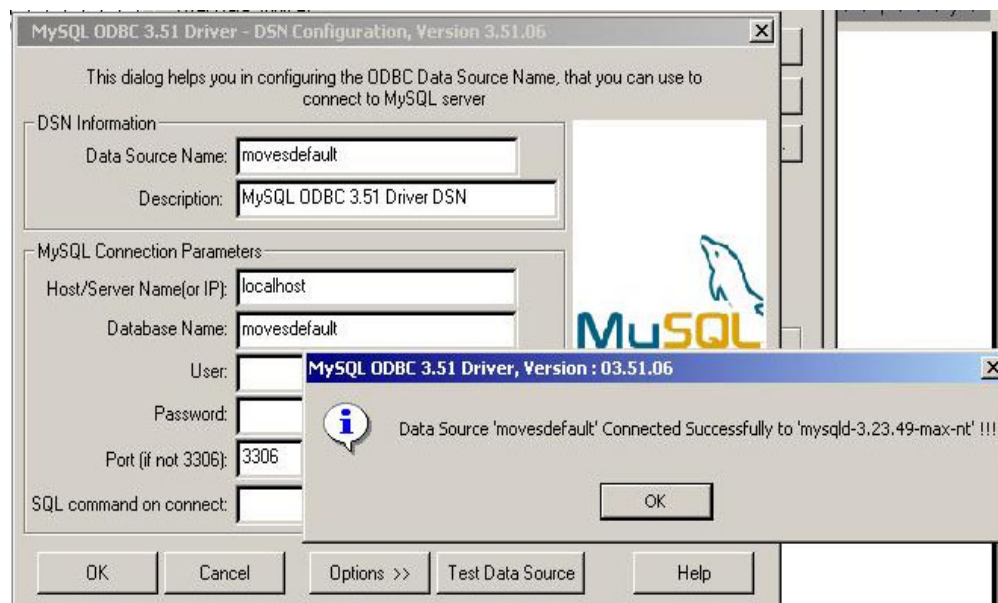
- (iv.) The “New Data Source” should use the MySQL ODBC Driver that was installed earlier. So, scroll through the list until the MySQL ODBC driver is found, highlight it, and click the “Finish” button.



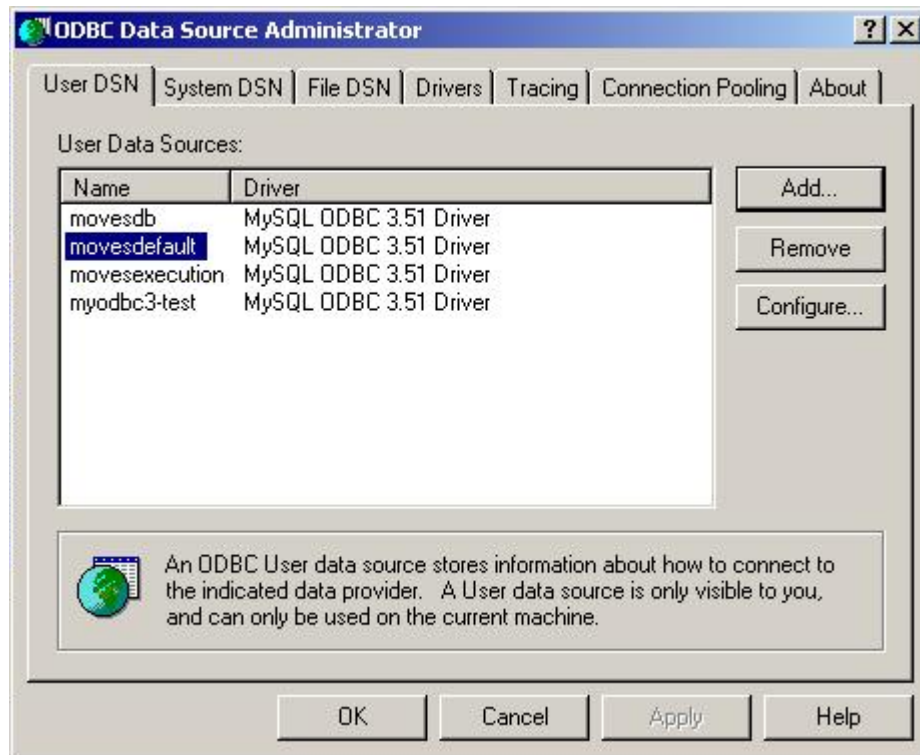
- (v.) Next, the database links need to be defined. The default values are as shown below. The database name will need to be changed to the name of the particular folder which contains the MySQL database files (i.e., the MySQL database name).



- (vi.) Once the database name and the data source name has been changed to an existing MySQL database, the database connection can be checked by clicking on the “Test Data Source” button.



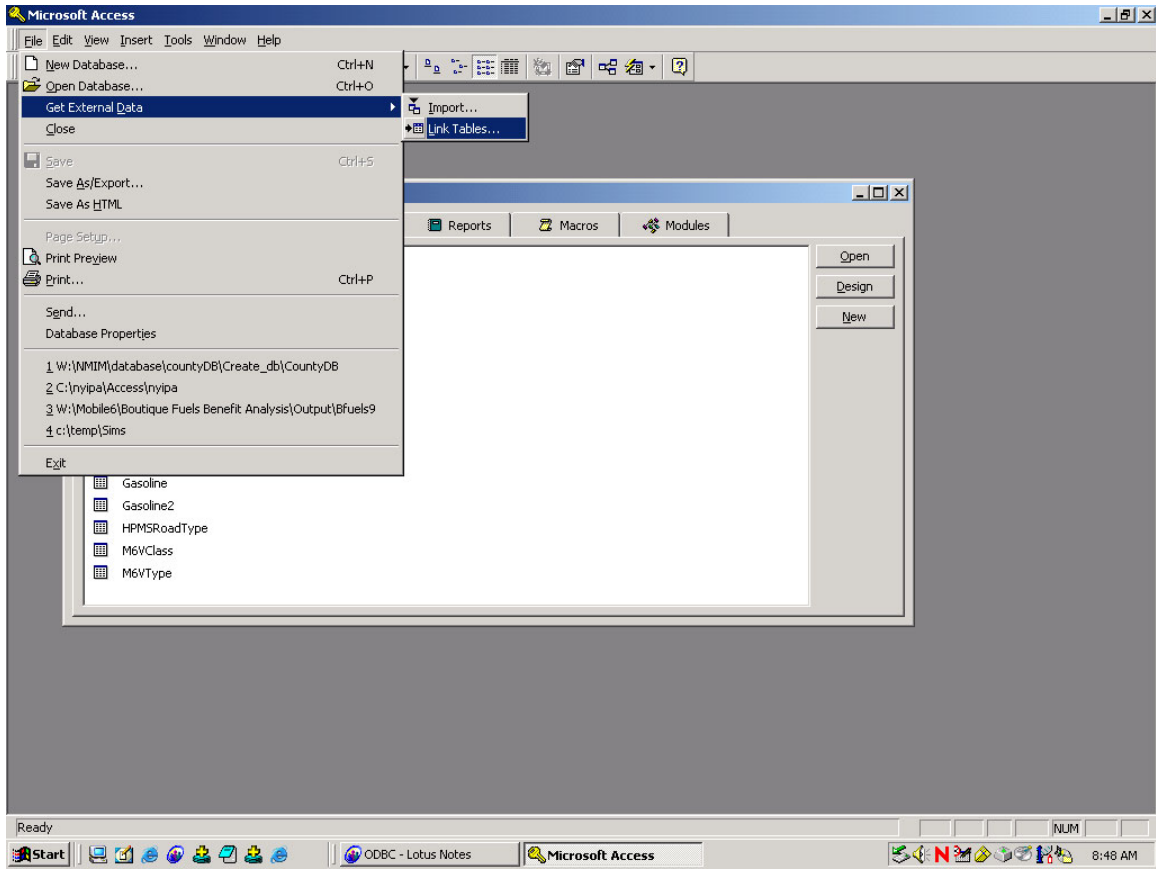
- (vii.) The added data source will show up in the list of data sources in the ODBC Data Source Administrator dialog. And this will finish the process of creating a new ODBC data source associated with a particular MySQL database.



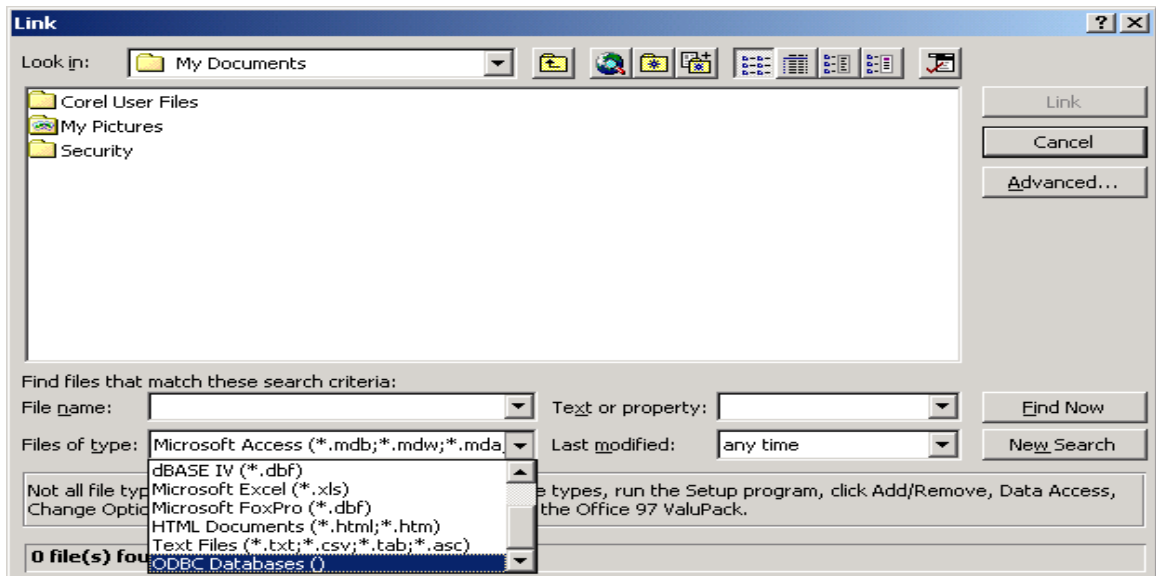
3. Run an ACCESS .mdb (either a new one or an existing one)

4. On the top menu bar, look for menu items, "File", "Get External Data", then "Link Tables ..." (see diagram below). Click on the item "Link Tables..."

Note: Using "Import" instead of "Link Tables" in Microsoft Access 97: There's a known problem with Microsoft Access 97 when linking MySQL tables that have any fields that are BIGINT data type, e.g., the BIGINT field SourceBinID in tables EmissionRate, SourceBin, and SourceBinDistribution of the MOVES database. The Microsoft Access 97 does not recognize the BIGINT data type and consequently will fail to link these tables. It is recommended to use the Microsoft Access "Import" feature to retrieve data from MySQL databases. There're many get-arounds to overcome this problem, however using "Import" feature is the simplest one to use.

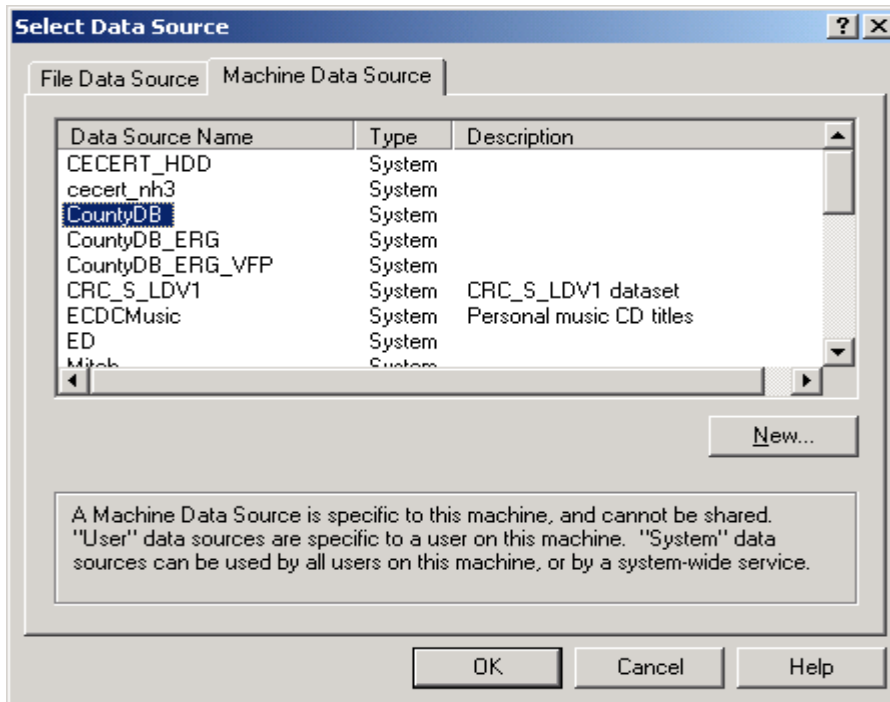


4. On the pop-up windows like the one below.  
 Choose “ODBC Databases()” from the drop-down list which is located next to the label “Files of type”  
 (you may need to scroll down a bit from this drop-down list box to find “ODBC Databases()”).

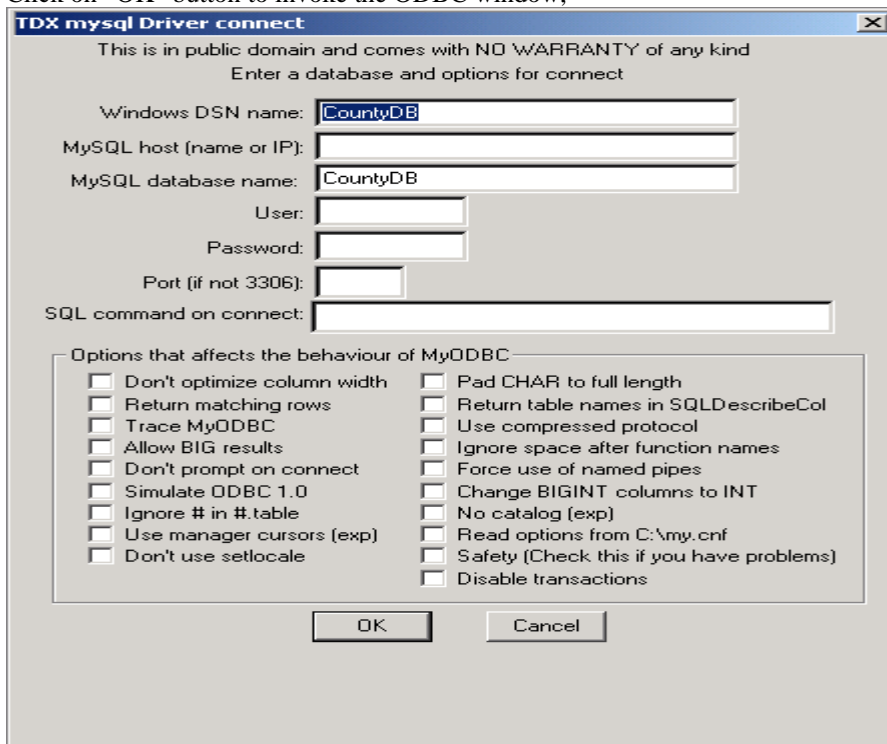




5. Another pop-up window similar to the one below will show up. Click on the tab “Machine Data Source”; select “CountyDB” from “Data Source Name” column. (if you can not find “CountyDB” under “Data Source Name” column, try to find it under tab “File Data Source”. If you still can not find it, let me know so I can come over to help).

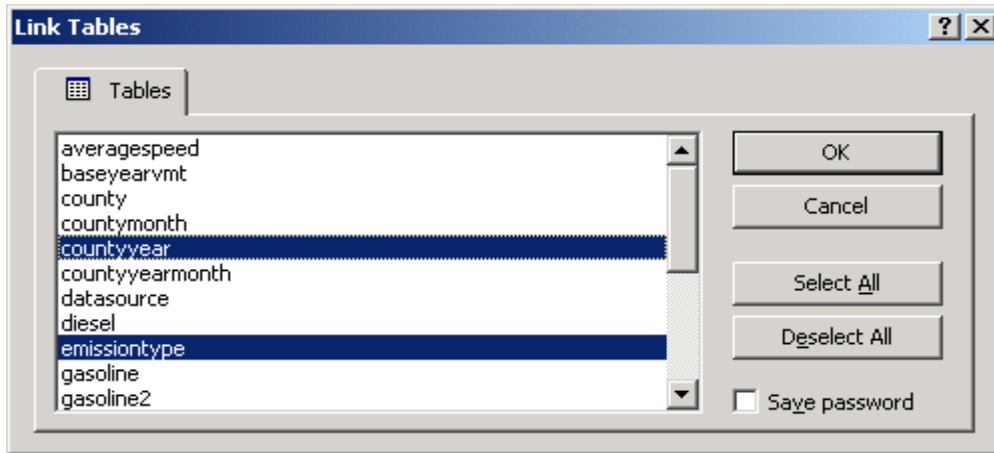


Click on “OK” button to invoke the ODBC window,

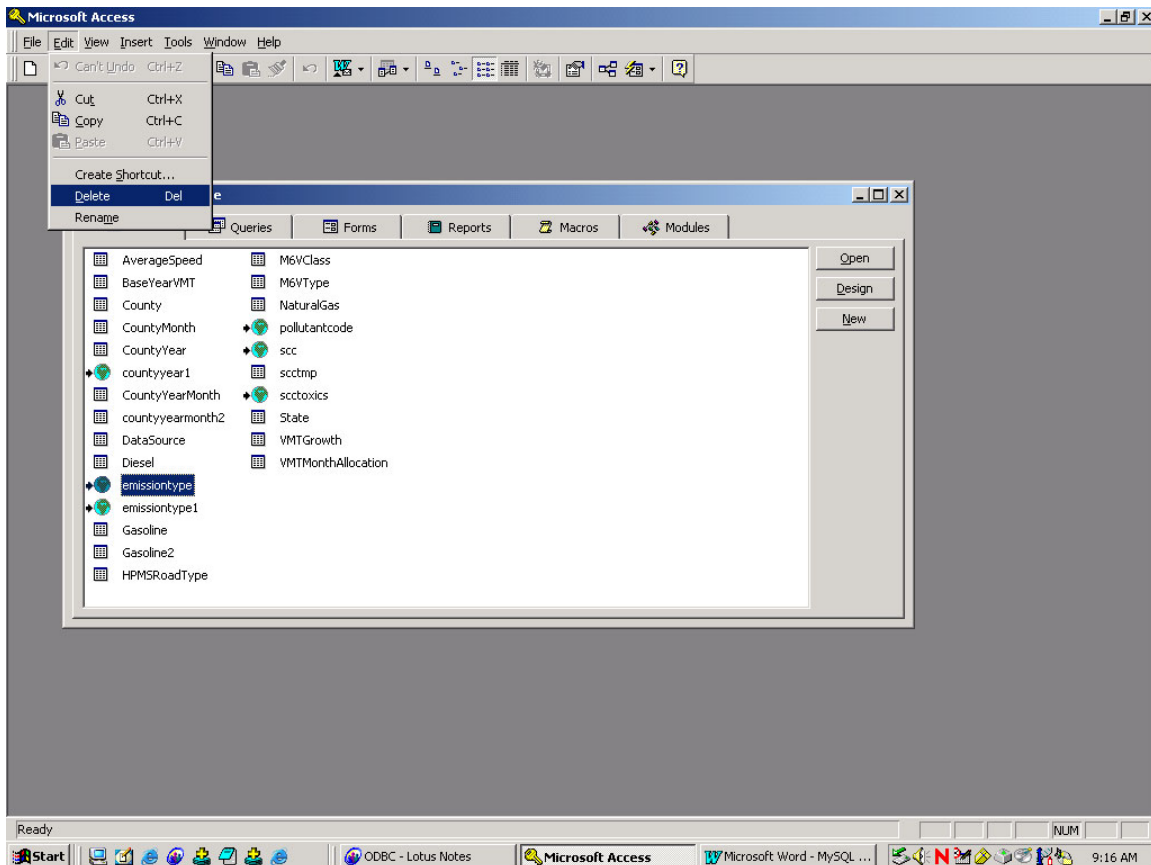


Do nothing , just click on “OK” button.

6. On the “Link Tables” widow as shown below, select as many tables as you want, click on “OK” button. You should see the linked tables in you ACCESS database screen under tab “ Tables”.



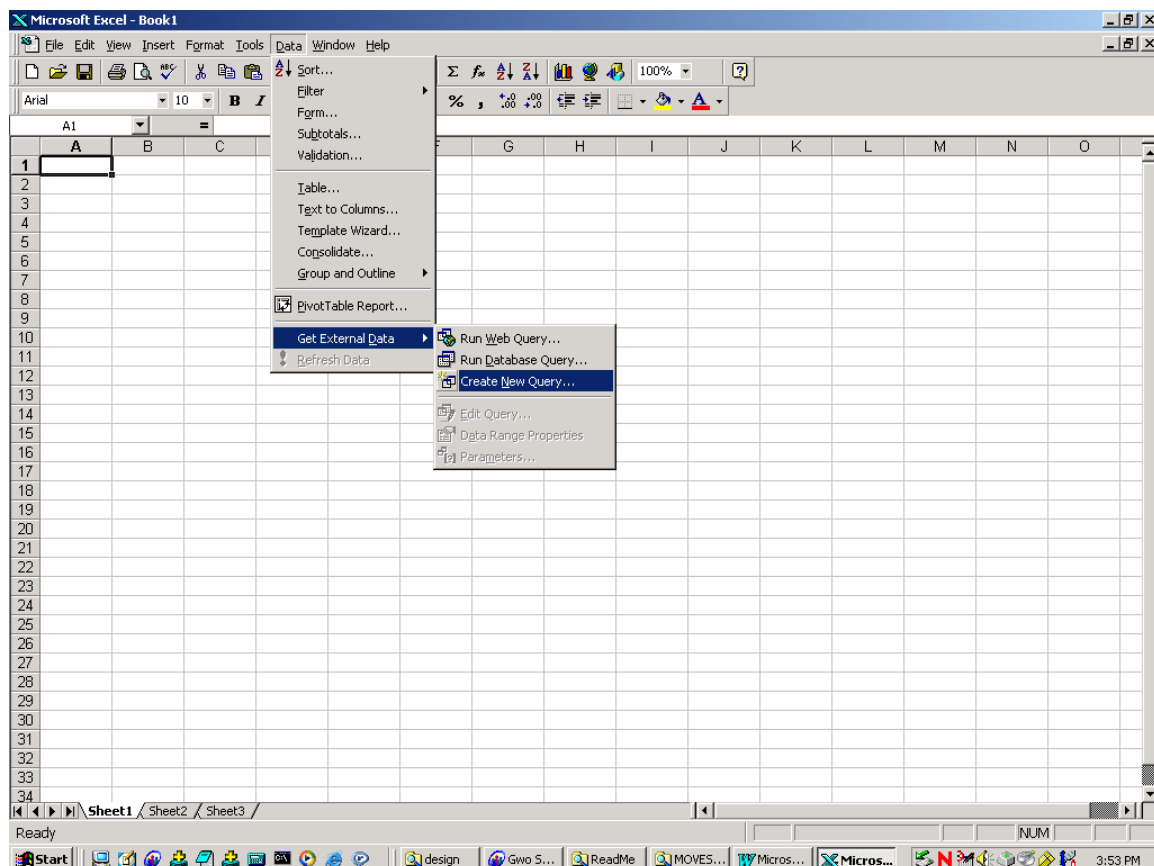
7. To remove the link(s) to MySQL table(s), select the table(s) in ACCESS mdb, then select “Delete” under “Edit” on top menu bar (see picture below). This means only the link, not the MySQL table(s) itself, will be deleted from you ACCESS mdb. You can always re-link any MySQL tables later.





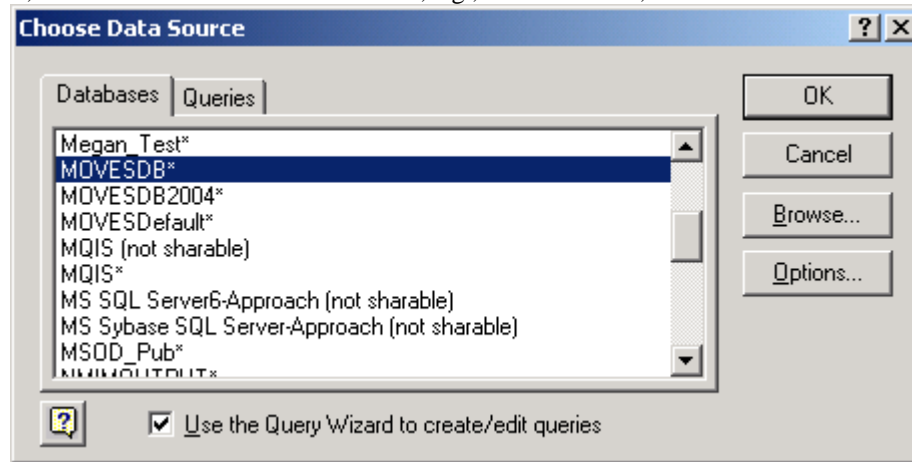
## Accessing MOVES MySQL databases using Microsoft Excel 97

3. Make sure the MySQL ODBC driver 3.51 (see the document “MySQL from an ACCESS mdb.doc”) or higher version has been install on your computer. If not, referring to the MOVES installation package for the install program MyODBC-3.51.06.exe and its documentation.
4. Make sure the ODBC data source name(s) (DSN) pointing to the desired MySQL database(s) have been created on your computer. If not, referring to the step 2 of the Section “Linking MySQL tables from Microsoft ACCESS 97”. Note that if a DSN has been created when setting up for Microsoft Access, that DSN can be shared by Excel and vice versa.

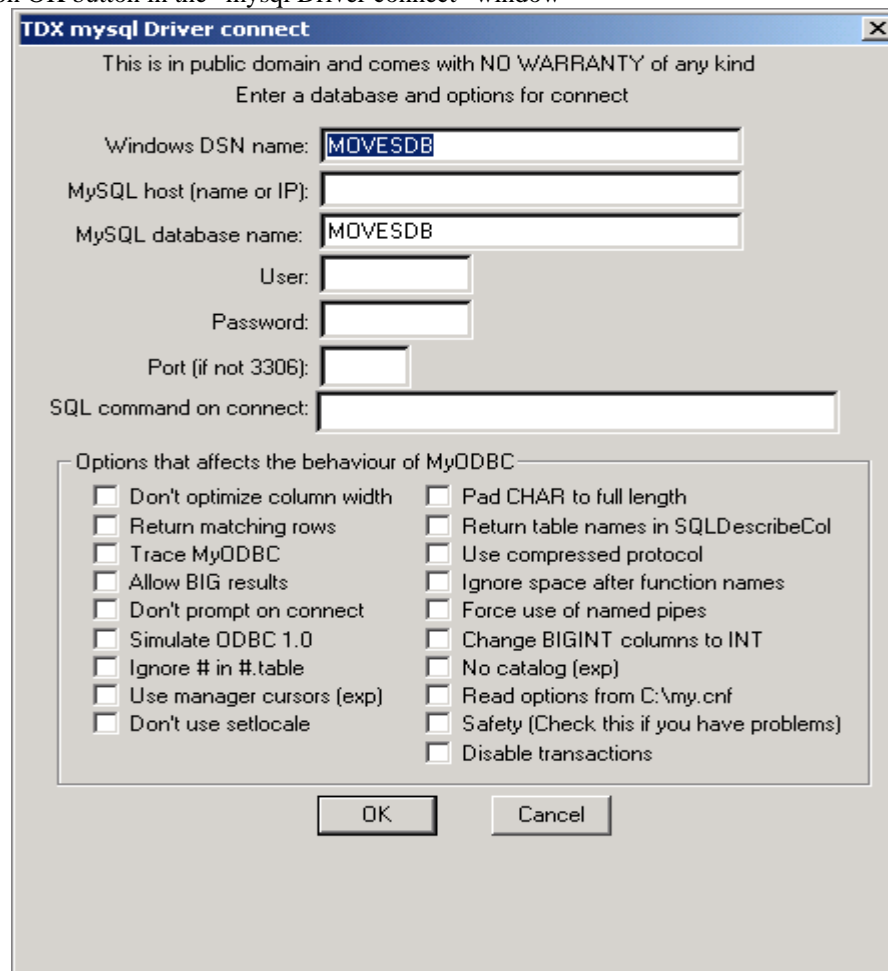


5. Open an Excel file, click on Data from the top menu bar, click on Get External Data from the popup menu, then select “Create New Query ...” from the sub-menu window (see diagram below). This will bring up a window of “Choose Data Source” window.

6. Assuming that the ODBC data source name(s) (DSN) pointing to the desired MySQL database(s) have been created on your computer as described in the Item 2 above. From the Choose Data Source window, select the desired DSN from the list, e.g., “MOVESDB”, then click on OK button.



7. Click on OK button in the “mysql Driver connect” window



8. The Query Wizard shows up, follow the instructions posted by the Wizard until finished.