

US EPA ARCHIVE DOCUMENT

The EBPI Results Processor 1.0

About the EBPI Results Processor. In a typical Environmental Results Program, the implementing agency chooses a number of Environmental Business Practice Indicators (EBPIs) that portray the most important and representative aspects of the facility's environmental performance. The EBPI Results Processor analyzes and presents results for up to 30 Environmental Business Practice Indicators (EBPIs), and can handle inspection data sets containing as many as 500 valid inspections. The current version of the EBPI Results Processor is intended for the analysis of data from a single round of ERP inspections (e.g., baseline inspections). The formulas are based upon those in the ERP Results Analyzer spreadsheet, available from EPA.

Using the EBPI Results Processor. To tailor the spreadsheet to the data set you have created requires a few simple steps.

1 Add Your Raw Data. Export the raw data from first round of inspections from your database into the "Round 1 Raw Data" worksheet. One easy way to do this is to export the data to Excel, and then copy the data into this worksheet. Just make sure the data are laid out in the same format as in "Round 1 Raw Data." Detailed instructions are provided below.

A Delete Pre-Existing Data. If you are re-using the spreadsheet, the first step is to delete any information from rows B5 to AG504 in the "Round 1 Raw Data" spreadsheet. If this is not done, information from the previously used data set may remain in the worksheet and result in inaccurate estimates of proportions.

B Delete Pre-Existing EBPI Field Names. If you are reusing the spreadsheet, remove pre-existing field names above the EBPI answer columns. I.e., delete cells D4 to AG4.

C Insert Your Data. Next, copy the data from your worksheet and paste them, starting in cell B5. Be sure to "copy" and "paste values" from your spreadsheet, do not "cut" and "paste." Ensure all of the columns match up with that data you have copied and pasted. Also be sure to drop out any ineligible facilities from the data set (e.g., drop out facilities that did not have a valid answer for any EBPIs, or facilities that weren't part of the random sample). These can be dropped out before pasting the data into the worksheet. The spreadsheet is also set to drop these facilities out of the calculations, but this may be a helpful step for data

D Insert Your Field Names. Finally, paste the field names associated with each EBPI answer column, starting in cell D4.

2 Fill Out the "EBPI Numbers and Names" Worksheet. In this step you need to identify how your EBPIs will be numbered and named in the "Rd 1 EBPI Proportions Table" and the "Rd 1 EBPI Proportions Graph."

A Go to the spreadsheet "EBPI Numbers and Names."

B Add in a program title. Type in the name of the program title you want associated with all the tables and graphs.

C Number the EBPIs. In Column B, type in the number that you would like to associate with each EBPI. You will see the field name for that EBPI in Column A.

D Create EBPI Descriptions. In Column C, type in the long description of the EBPI. This description will appear in the EBPI Proportions Graph.

E Create EBPI Nicknames. In Column D, type in an EBPI nickname. This shorter description for the EBPI will appear in the EBPI Proportions Graph. Try to be very succinct, or the text will take up too much room on the graph.

3 Fill out the "Assumptions" Sheet. These assumptions are critical inputs to many of the calculations in the Results Processor. You only have to enter the data once, and the information will be carried through to all necessary formulas and tables/graphs.

A Identify Population Size. Enter the total number of facilities from which the random sample was drawn. For example, the number of gas stations in the state.

B Identify Confidence Level. Choose your desired confidence level, 90 or 95 percent. The recommended confidence level is 95 percent.

The EBPI Results Processor 1.0

4 Adjust to Your Number of EBPIs. If you have fewer than 30 EBPIs, you should adjust "Rd 1 EBPI Proportions Table" to show the proper number of EBPIs on the proportions table and the proportions graph. To do so, do the following:

A Go to the spreadsheet "Rd1 EBPI Proportions Table."

B Hide unused rows. Hide the EBPI rows (at the bottom of the table) that are not being used. (Select the rows to hide. Select format from the main menu, then Row, then Hide.)

All tables and graphs are now updated with the new data.

5 Print the spreadsheets. All graphs and tables have been formatted to print properly. Each graph will print on one page. Large tables will print accurately across multiple pages. To print a graph or table, do the following.

A Highlight all the sheets you want to print. To print one sheet, simply follow the instructions below when you are in the spreadsheet you want printed. However, if you want to print more than one sheet at a time, you have to highlight the tabs of the sheets you want printed. To do this, hold down the "Control" key (the "Ctrl" key on both the bottom left or right hand of your keyboard), and click on the tabs of the sheets you want to print. The highlighted tabs will now be white.

B Go to the "File" menu. Now that you have the sheets you want to print, select file from the main menu.

C Select the print option. Once the menu opens, scroll down the list until you find the print option. Click on this. Sometimes, to save space, Excel will hide unused commands on the menus. If there is no print option available, click on the double arrows pointing down to expand the file menu. A print option will then be available to select.

D Click OK. A new menu will pop up that has all the print settings of your printer. As the sheets have already been formatted to print, all you have to do is click "OK" at the bottom of the menu. All the highlighted pages will now print.

Notes

1 Protected Worksheets and Cells. Worksheets and cells that do not require any sort of inputs are protected. To unprotect a sheet, select tools from the main menu above, then select the protection. Unprotect the sheets. Please note that these worksheets are protected because they contain formulas that calculate answers to create the graphs and tables. If these cells and sheets are changed, the accuracy of the results may be compromised.

2 Hidden Worksheets. There are a few worksheets with intermediary steps in calculations that are "hidden" in this spreadsheet. Most users do not need to access the sheets, but if you would like to look at them, you may unhide by selecting format from the main menu, then select sheet, then unhide. Please note that these worksheets may also need to be unprotected if you want to modify them. As with the other protected sheets, if these are changed, the accuracy of the results may be compromised.

Insert information starting in cell B4

Facility Information								
Application #	InspectionDate	A1	A3	A4	A5	B1	B2	C1
06-0520	9/30/2008	Y	Y	NA	Y	NA	NA	NA
07-0209	9/30/2008	N	NA	Y		NA	NA	NA
06-0318	9/30/2008	N	Y	N	N	NA	NA	NA
07-0432	9/25/2008	Y	N	Y	Y	NA	NA	Y
Royal Mills	9/25/2008	NA	NA	NA	NA	Y	Y	N
RIR100661	9/25/2008	NA	NA	NA	NA	Y	Y	N
QDC	6/6/2008	NA	NA	NA	NA	N	N	N
RIR100662	9/16/2008	NA	NA	NA	NA	N	Y	Y
RIR100497	9/25/2008	NA	NA	NA	NA	N	N	N
RIR100676	9/25/2008	NA	NA	NA	NA	Y	Y	N
RIR100677	10/2/2008	NA	NA	NA	NA	N	N	Y
RIR100673	9/16/2008	NA	NA	NA	NA	Y	N	N
RIR100619	9/16/2008	NA	NA	NA	NA	NA	NA	NA
07-0183	10/3/2008	NA	NA	NA	NA	NA	N	N
07-0142	10/3/2008	NA	NA	NA	NA	NA	NA	N
URI	9/25/2008	NA	NA	NA	NA	N	N	N
RIR100626	9/25/2008	NA	NA	NA	NA	Y	N	Y
RIR100653	9/25/2008	NA	NA	NA	NA	N	Y	Y
RIR100651	9/25/2008	NA	NA	NA	NA	N	Y	Y
RIR100398	9/25/2008	NA	NA	NA	NA	N	NA	NA
RIR100635	9/25/2008	NA	NA	NA	NA	N	N	Y
07-0199	9/25/2008	NA	NA	NA	NA	N	Y	Y
07-0202	9/25/2008	NA	NA	NA	NA	N	Y	Y
RIR100634	9/25/2008	NA	NA	NA	NA	NA	NA	N
RIR100667	9/25/2008	NA	NA	NA	NA	N	Y	Y
07-0439	9/25/2008	N	Y	N	Y	NA	NA	Y
07-0486	9/25/2008	N	Y	N	N	NA	NA	N
07-0151	9/25/2008	N	Y	N	N	NA	NA	Y
07-0348	9/25/2008	Y	Y	N	Y	NA	NA	NA
RIR100695	7/30/2009	NA	NA	NA	NA	N	N	N
RIR100691	7/29/2009	NA	NA	NA	NA	Y	Y	Y
08-139	7/23/2009	Y	Y	N	Y	Y	Y	Y
08-357	7/22/2009	N	Y	Y	Y	N	N	N
RIR100705	7/22/2009	NA	NA	NA	NA	N	N	Y
RIR100701	7/21/2009	NA	NA	NA	NA	Y	Y	Y
RIR100687	7/15/2009	NA	NA	NA	NA	Y	Y	N
RIR100706	7/15/2009	NA	NA	NA	NA	N	N	N
RIR100723	7/15/2009	NA	NA	NA	NA	N	N	N
RIR100709	7/7/2009	NA	NA	NA	NA	Y	N	N
RIR100721	7/7/2009	NA	NA	NA	NA	Y	N	Y
08-099	7/16/2009	N	N	Y	N	Y	N	Y
08-239	6/17/2009	N	Y	Y	Y	N	N	N
08-372	7/14/2009	N	Y	N	Y	Y	N	Y
07-256	6/25/2009	N	N	Y	Y	N	N	Y
RIR100718	8/4/2009	NA	NA	NA	NA	N	N	Y

Facility Information								
Application #	InspectionDate	A1	A3	A4	A5	B1	B2	C1
RIR100728	8/5/2009	NA	NA	NA	NA	N	N	Y
08-150	8/5/2009	N	N	N	N	N	N	N
08-375	8/7/2009	N	N	N	Y	N	N	Y
09-0022	8/13/2009	Y	Y	N	Y	N	N	N
RIR-100722	8/14/2009	NA	NA	NA	NA	N	N	N
08-203	8/4/2009	N	N	N	N	N	N	Y
RIR100619	8/6/2009	NA	NA	NA	NA	N	N	N
08-306	8/13/2009	NA	NA	NA	NA	NA	NA	Y
08-115	8/14/2009	N	Y	Y	Y	N	N	N
04-0645	8/18/2009	N	Y	Y	Y	NA	NA	Y
RIR100729	8/20/2009	NA	NA	NA	NA	N	N	N
RIR100677	8/20/2009	NA	NA	NA	NA	N	N	Y
08-121	8/20/2009	N	Y	Y	N	Y	N	Y
09-0017	8/21/2009	N	Y	N	Y	N	N	Y
08-0351	8/24/2009	Y	Y	Y	Y	N	N	Y
06-0062	8/24/2009	Y	Y	Y	N	N	N	N
08-0230	9/1/2009	N	Y	N	N	NA	NA	N
RIR100720	8/25/2009	NA	NA	NA	NA	Y	Y	Y
08-0136	8/25/2009	Y	Y	Y	Y	N	N	Y
RIR100702	8/25/2009	NA	NA	NA	NA	N	N	Y
06-0103	8/25/2009	Y	Y	N	Y	Y	Y	N
08-0198	9/2/2009	N	Y	N	N	N	N	N
RIR100636	10/30/2008	NA	NA	NA	NA	Y	Y	Y
RIR100664	10/30/2008	NA	NA	NA	NA	Y	Y	Y
RIR100685	9/1/2009	NA	NA	NA	NA	Y	N	N
RIR100686	9/1/2009	NA	NA	NA	NA	Y	N	Y
RIR100656	6/6/2008	NA	NA	NA	NA	N	N	N
RIR100639	10/30/2008	NA	NA	NA	NA	Y	Y	Y
RIR100716	9/8/2009	NA	NA	NA	NA	NA	NA	Y
08-0289	9/8/2009	N	N	Y	Y	N	N	Y
RIR100661	9/8/2009	NA	NA	NA	NA	Y	Y	Y
RIR100528	9/8/2009	NA	NA	NA	NA	Y	Y	N
RIR100432	9/8/2009	NA	NA	NA	NA	Y	NA	Y
RIR100727	9/10/2009	NA	NA	NA	NA	N	N	N
08-0313	9/14/2009	N	Y	Y	Y	N	N	Y
08-0084	9/15/2009	Y	Y	Y	Y	N	N	Y
09-0119	9/15/2009	N	N	N	Y	N	N	Y
08-0073	9/18/2009	N	N	N	Y	Y	Y	N
RIR100726	9/18/2009	NA	NA	NA	NA	Y	Y	Y
RIR100711	9/22/2009	NA	NA	NA	NA	N	Y	Y
RIR100712	9/22/2009	NA	NA	NA	NA	Y	Y	N
07-0479	9/28/2009	N	Y	N	N	N	N	N
07-0472	10/5/2009	N	Y	Y	N	N	N	N
07-0436	10/8/2009	N	Y	Y	N	N	N	N
07-0416	10/8/2009	N	Y	Y	Y	NA	N	Y
07-0300	6/16/2009	N	Y	Y	N	NA	NA	Y

Facility Information								
Application #	InspectionDate	A1	A3	A4	A5	B1	B2	C1
09-0037	10/15/2009	N	Y	N	N	N	N	N
07-0329	10/15/2009	N	N	N	N	N	N	N
RIR100736	10/14/2009	NA	NA	NA	NA	N	N	Y
07-0145	10/14/2009	Y	Y	N	N	N	N	N
06-0325	10/15/2009	Y	Y	Y	Y	N	N	N
09-0023	10/21/2009	Y	Y	Y	Y	N	N	Y
07-0105	10/21/2009	Y	Y	N	N	N	N	N
08-0122	10/22/2009	N	Y	Y	N	N	N	N
RIR100732	10/22/2009	NA	NA	NA	NA	N	N	N
07-0466	10/20/2009	Y	Y	Y	N	NA	NA	Y

Insert information starting in cell B4									
Facility Information									
Application #	InspectionDate	C2	C3	C4	C5	C6	C8	D1	
06-0520	9/30/2008	NA	NA	NA	NA	NA	NA	NA	NA
07-0209	9/30/2008	NA	NA	NA	NA	NA	NA	NA	NA
06-0318	9/30/2008	NA	NA	NA	NA	NA	NA	NA	NA
07-0432	9/25/2008	Y	NA	Y	NA	N	N	N	N
Royal Mills	9/25/2008	Y	NA	N	NA	N	Y	NA	NA
RIR100661	9/25/2008	NA	Y	N	Y	N	Y	Y	Y
QDC	6/6/2008	N	NA	N	Y	Y	N	N	Y
RIR100662	9/16/2008	Y	Y	Y	Y	N	NA	NA	Y
RIR100497	9/25/2008	N	Y	N	NA	N	N	N	N
RIR100676	9/25/2008	NA	Y	Y	Y	N	NA	Y	Y
RIR100677	10/2/2008	Y	N	NA	N	N	NA	N	N
RIR100673	9/16/2008	N	Y	Y	Y	N	NA	Y	Y
RIR100619	9/16/2008	NA	NA	NA	NA	NA	NA	NA	NA
07-0183	10/3/2008	N	N	NA	NA	N	NA	N	N
07-0142	10/3/2008	N	N	NA	N	N	NA	Y	Y
URI	9/25/2008	NA	N	N	NA	Y	N	N	N
RIR100626	9/25/2008	NA	Y	Y	Y	Y	Y	Y	N
RIR100653	9/25/2008	Y	Y	Y	Y	Y	Y	Y	Y
RIR100651	9/25/2008	Y	Y	Y	Y	Y	N	NA	NA
RIR100398	9/25/2008	NA	NA	NA	NA	NA	NA	NA	NA
RIR100635	9/25/2008	Y	Y	Y	N	Y	NA	NA	NA
07-0199	9/25/2008	NA	N	NA	Y	Y	NA	Y	Y
07-0202	9/25/2008	Y	Y	Y	N	Y	N	NA	NA
RIR100634	9/25/2008	N	Y	NA	NA	N	Y	Y	Y
RIR100667	9/25/2008	Y	Y	NA	Y	Y	NA	Y	Y
07-0439	9/25/2008	Y	NA	NA	Y	Y	NA	NA	NA
07-0486	9/25/2008	NA	NA	NA	NA	N	NA	NA	NA
07-0151	9/25/2008	NA	NA	Y	Y	N	NA	N	N
07-0348	9/25/2008	NA	NA	NA	NA	NA	NA	NA	NA
RIR100695	7/30/2009	N	N	Y	N	N	NA	N	N
RIR100691	7/29/2009	Y	Y	Y	Y	Y	Y	Y	Y
08-139	7/23/2009	Y	Y	Y	NA	Y	N	NA	NA
08-357	7/22/2009	Y	NA	N	Y	N	N	N	N
RIR100705	7/22/2009	N	NA	N	NA	N	Y	Y	Y
RIR100701	7/21/2009	Y	NA	Y	NA	N	N	NA	NA
RIR100687	7/15/2009	N	NA	N	NA	NA	N	NA	NA
RIR100706	7/15/2009	N	N	N	N	Y	NA	N	N
RIR100723	7/15/2009	N	Y	N	Y	Y	N	N	N
RIR100709	7/7/2009	N	Y	N	Y	N	N	N	N
RIR100721	7/7/2009	Y	NA	Y	Y	N	NA	N	N
08-099	7/16/2009	Y	NA	Y	Y	N	Y	N	N
08-239	6/17/2009	Y	NA	Y	Y	N	Y	N	N
08-372	7/14/2009	Y	NA	N	Y	Y	N	N	N
07-256	6/25/2009	Y	NA	Y	Y	N	Y	N	N
RIR100718	8/4/2009	N	NA	N	Y	N	NA	Y	Y

Facility Information								
Application #	InspectionDate	C2	C3	C4	C5	C6	C8	D1
RIR100728	8/5/2009	Y	NA	Y	Y	N	Y	N
08-150	8/5/2009	N	NA	N	Y	N	N	N
08-375	8/7/2009	Y	N	NA	NA	N	NA	N
09-0022	8/13/2009	Y	Y	Y	N	N	NA	Y
RIR-100722	8/14/2009	Y	Y	N	N	N	N	N
08-203	8/4/2009	Y	NA	Y	Y	Y	NA	Y
RIR100619	8/6/2009	N	NA	Y	NA	N	NA	N
08-306	8/13/2009	Y	NA	N	N	N	NA	N
08-115	8/14/2009	Y	NA	Y	N	N	N	N
04-0645	8/18/2009	Y	N	Y	Y	Y	Y	N
RIR100729	8/20/2009	N	NA	Y	NA	Y	Y	N
RIR100677	8/20/2009	Y	N	NA	N	N	NA	Y
08-121	8/20/2009	Y	N	Y	N	N	N	N
09-0017	8/21/2009	Y	Y	Y	Y	Y	N	Y
08-0351	8/24/2009	Y	Y	N	Y	Y	N	Y
06-0062	8/24/2009	N	Y	NA	N	N	NA	N
08-0230	9/1/2009	N	NA	N	NA	Y	NA	N
RIR100720	8/25/2009	Y	Y	Y	NA	Y	Y	NA
08-0136	8/25/2009	NA	NA	NA	NA	Y	NA	NA
RIR100702	8/25/2009	Y	Y	NA	Y	N	NA	N
06-0103	8/25/2009	N	Y	N	N	N	NA	Y
08-0198	9/2/2009	N	Y	N	Y	N	NA	N
RIR100636	10/30/2008	NA	NA	Y	NA	Y	Y	NA
RIR100664	10/30/2008	Y	Y	Y	Y	Y	Y	Y
RIR100685	9/1/2009	N	Y	Y	Y	N	Y	Y
RIR100686	9/1/2009	Y	Y	N	Y	N	N	Y
RIR100656	6/6/2008	N	N	N	Y	N	N	Y
RIR100639	10/30/2008	Y	Y	N	Y	N	N	Y
RIR100716	9/8/2009	Y	NA	Y	NA	Y	Y	Y
08-0289	9/8/2009	Y	Y	NA	Y	N	NA	N
RIR100661	9/8/2009	Y	Y	NA	NA	Y	Y	Y
RIR100528	9/8/2009	Y	Y	NA	N	N	NA	N
RIR100432	9/8/2009	Y	NA	Y	Y	Y	Y	Y
RIR100727	9/10/2009	N	Y	Y	N	N	Y	Y
08-0313	9/14/2009	Y	Y	N	Y	Y	N	N
08-0084	9/15/2009	Y	Y	N	Y	N	Y	Y
09-0119	9/15/2009	Y	N	NA	Y	N	NA	Y
08-0073	9/18/2009	N	Y	Y	Y	N	Y	Y
RIR100726	9/18/2009	Y	Y	Y	Y	Y	Y	Y
RIR100711	9/22/2009	Y	Y	Y	NA	Y	NA	Y
RIR100712	9/22/2009	Y	Y	Y	N	Y	NA	Y
07-0479	9/28/2009	N	Y	N	N	N	N	N
07-0472	10/5/2009	N	N	N	N	N	N	N
07-0436	10/8/2009	N	Y	Y	N	N	N	Y
07-0416	10/8/2009	Y	Y	NA	Y	Y	NA	Y
07-0300	6/16/2009	Y	NA	NA	Y	Y	NA	Y

Facility Information								
Application #	InspectionDate	C2	C3	C4	C5	C6	C8	D1
09-0037	10/15/2009	N	N	N	Y	N	N	N
07-0329	10/15/2009	N	NA	N	N	N	N	Y
RIR100736	10/14/2009	Y	Y	N	Y	N	N	Y
07-0145	10/14/2009	N	NA	N	N	N	N	Y
06-0325	10/15/2009	N	Y	N	Y	N	N	Y
09-0023	10/21/2009	Y	N	N	Y	Y	N	Y
07-0105	10/21/2009	N	Y	N	Y	N	N	Y
08-0122	10/22/2009	Y	Y	N	Y	N	N	N
RIR100732	10/22/2009	Y	Y	N	Y	Y	N	Y
07-0466	10/20/2009	NA	NA	NA	NA	Y	N	Y

Insert information starting in cell B4

Facility Information		D2	D3	D5				
Application #	InspectionDate							
06-0520	9/30/2008	NA	NA	NA				
07-0209	9/30/2008	NA	NA	NA				
06-0318	9/30/2008	NA	NA	NA				
07-0432	9/25/2008	NA	NA	N				
Royal Mills	9/25/2008	Y	NA	Y				
RIR100661	9/25/2008	NA	NA	Y				
QDC	6/6/2008	Y	NA	Y				
RIR100662	9/16/2008	Y	N	Y				
RIR100497	9/25/2008	Y	N	Y				
RIR100676	9/25/2008	Y	Y	Y				
RIR100677	10/2/2008	Y	N	N				
RIR100673	9/16/2008	Y	Y	Y				
RIR100619	9/16/2008	NA	NA	NA				
07-0183	10/3/2008	NA	NA	Y				
07-0142	10/3/2008	NA	NA	Y				
URI	9/25/2008	NA	NA	Y				
RIR100626	9/25/2008	NA	NA	Y				
RIR100653	9/25/2008	Y	Y	Y				
RIR100651	9/25/2008	Y	NA	Y				
RIR100398	9/25/2008	NA	NA	NA				
RIR100635	9/25/2008	Y	Y	Y				
07-0199	9/25/2008	NA	NA	NA				
07-0202	9/25/2008	NA	NA	Y				
RIR100634	9/25/2008	NA	NA	Y				
RIR100667	9/25/2008	Y	Y	Y				
07-0439	9/25/2008	NA	NA	NA				
07-0486	9/25/2008	NA	NA	N				
07-0151	9/25/2008	NA	NA	Y				
07-0348	9/25/2008	NA	NA	Y				
RIR100695	7/30/2009	NA	NA	Y				
RIR100691	7/29/2009	Y	Y	Y				
08-139	7/23/2009	NA	NA	Y				
08-357	7/22/2009	NA	NA	Y				
RIR100705	7/22/2009	Y	NA	N				
RIR100701	7/21/2009	NA	NA	Y				
RIR100687	7/15/2009	Y	Y	Y				
RIR100706	7/15/2009	N	N	Y				
RIR100723	7/15/2009	Y	N	N				
RIR100709	7/7/2009	Y	Y	Y				
RIR100721	7/7/2009	Y	Y	Y				
08-099	7/16/2009	NA	NA	Y				
08-239	6/17/2009	NA	NA	Y				
08-372	7/14/2009	NA	NA	Y				
07-256	6/25/2009	NA	NA	N				
RIR100718	8/4/2009	NA	NA	Y				

Facility Information							
Application #	InspectionDate	D2	D3	D5			
RIR100728	8/5/2009	N	NA	Y			
08-150	8/5/2009	Y	NA	Y			
08-375	8/7/2009	NA	NA	N			
09-0022	8/13/2009	Y	Y	Y			
RIR-100722	8/14/2009	N	N	N			
08-203	8/4/2009	N	NA	Y			
RIR100619	8/6/2009	NA	NA	Y			
08-306	8/13/2009	Y	NA	N			
08-115	8/14/2009	Y	NA	Y			
04-0645	8/18/2009	NA	NA	Y			
RIR100729	8/20/2009	N	NA	N			
RIR100677	8/20/2009	N	NA	N			
08-121	8/20/2009	Y	NA	Y			
09-0017	8/21/2009	Y	Y	Y			
08-0351	8/24/2009	Y	Y	Y			
06-0062	8/24/2009	Y	N	Y			
08-0230	9/1/2009	N	NA	Y			
RIR100720	8/25/2009	NA	Y	Y			
08-0136	8/25/2009	NA	N	Y			
RIR100702	8/25/2009	Y	Y	N			
06-0103	8/25/2009	Y	N	Y			
08-0198	9/2/2009	NA	N	Y			
RIR100636	10/30/2008	NA	NA	Y			
RIR100664	10/30/2008	N	N	Y			
RIR100685	9/1/2009	Y	Y	Y			
RIR100686	9/1/2009	Y	Y	Y			
RIR100656	6/6/2008	Y	NA	Y			
RIR100639	10/30/2008	N	NA	N			
RIR100716	9/8/2009	NA	NA	Y			
08-0289	9/8/2009	Y	Y	Y			
RIR100661	9/8/2009	Y	NA	Y			
RIR100528	9/8/2009	Y	N	Y			
RIR100432	9/8/2009	NA	NA	Y			
RIR100727	9/10/2009	Y	N	Y			
08-0313	9/14/2009	Y	Y	N			
08-0084	9/15/2009	Y	Y	Y			
09-0119	9/15/2009	NA	N	Y			
08-0073	9/18/2009	Y	Y	N			
RIR100726	9/18/2009	NA	NA	NA			
RIR100711	9/22/2009	Y	Y	Y			
RIR100712	9/22/2009	Y	N	Y			
07-0479	9/28/2009	Y	N	Y			
07-0472	10/5/2009	Y	N	N			
07-0436	10/8/2009	Y	N	Y			
07-0416	10/8/2009	Y	Y	Y			
07-0300	6/16/2009	N	NA	Y			

Facility Information							
Application #	InspectionDate	D2	D3	D5			
09-0037	10/15/2009	Y	N	Y			
07-0329	10/15/2009	NA	N	Y			
RIR100736	10/14/2009	Y	Y	Y			
07-0145	10/14/2009	NA	NA	Y			
06-0325	10/15/2009	Y	Y	Y			
09-0023	10/21/2009	Y	N	Y			
07-0105	10/21/2009	Y	NA	Y			
08-0122	10/22/2009	N	NA	N			
RIR100732	10/22/2009	Y	N	Y			
07-0466	10/20/2009	NA	NA	Y			

Facility Information							
Application #	InspectionDate	D2	D3	D5			

Facility Information							
Application #	InspectionDate	D2	D3	D5			

Facility Information							
Application #	InspectionDate	D2	D3	D5			

Facility Information							
Application #	InspectionDate	D2	D3	D5			

Facility Information							
Application #	InspectionDate	D2	D3	D5			

Facility Information							
Application #	InspectionDate	D2	D3	D5			

Facility Information							
Application #	InspectionDate	D2	D3	D5			

Facility Information							
Application #	InspectionDate	D2	D3	D5			

Insert information starting in cell B4

Facility Information								
Application #	InspectionDate							
06-0520	9/30/2008							
07-0209	9/30/2008							
06-0318	9/30/2008							
07-0432	9/25/2008							
Royal Mills	9/25/2008							
RIR100661	9/25/2008							
QDC	6/6/2008							
RIR100662	9/16/2008							
RIR100497	9/25/2008							
RIR100676	9/25/2008							
RIR100677	10/2/2008							
RIR100673	9/16/2008							
RIR100619	9/16/2008							
07-0183	10/3/2008							
07-0142	10/3/2008							
URI	9/25/2008							
RIR100626	9/25/2008							
RIR100653	9/25/2008							
RIR100651	9/25/2008							
RIR100398	9/25/2008							
RIR100635	9/25/2008							
07-0199	9/25/2008							
07-0202	9/25/2008							
RIR100634	9/25/2008							
RIR100667	9/25/2008							
07-0439	9/25/2008							
07-0486	9/25/2008							
07-0151	9/25/2008							
07-0348	9/25/2008							
RIR100695	7/30/2009							
RIR100691	7/29/2009							
08-139	7/23/2009							
08-357	7/22/2009							
RIR100705	7/22/2009							
RIR100701	7/21/2009							
RIR100687	7/15/2009							
RIR100706	7/15/2009							
RIR100723	7/15/2009							
RIR100709	7/7/2009							
RIR100721	7/7/2009							
08-099	7/16/2009							
08-239	6/17/2009							
08-372	7/14/2009							
07-256	6/25/2009							
RIR100718	8/4/2009							

Facility Information							
Application #	InspectionDate						
RIR100728	8/5/2009						
08-150	8/5/2009						
08-375	8/7/2009						
09-0022	8/13/2009						
RIR-100722	8/14/2009						
08-203	8/4/2009						
RIR100619	8/6/2009						
08-306	8/13/2009						
08-115	8/14/2009						
04-0645	8/18/2009						
RIR100729	8/20/2009						
RIR100677	8/20/2009						
08-121	8/20/2009						
09-0017	8/21/2009						
08-0351	8/24/2009						
06-0062	8/24/2009						
08-0230	9/1/2009						
RIR100720	8/25/2009						
08-0136	8/25/2009						
RIR100702	8/25/2009						
06-0103	8/25/2009						
08-0198	9/2/2009						
RIR100636	10/30/2008						
RIR100664	10/30/2008						
RIR100685	9/1/2009						
RIR100686	9/1/2009						
RIR100656	6/6/2008						
RIR100639	10/30/2008						
RIR100716	9/8/2009						
08-0289	9/8/2009						
RIR100661	9/8/2009						
RIR100528	9/8/2009						
RIR100432	9/8/2009						
RIR100727	9/10/2009						
08-0313	9/14/2009						
08-0084	9/15/2009						
09-0119	9/15/2009						
08-0073	9/18/2009						
RIR100726	9/18/2009						
RIR100711	9/22/2009						
RIR100712	9/22/2009						
07-0479	9/28/2009						
07-0472	10/5/2009						
07-0436	10/8/2009						
07-0416	10/8/2009						
07-0300	6/16/2009						

Facility Information								
Application #	InspectionDate							
09-0037	10/15/2009							
07-0329	10/15/2009							
RIR100736	10/14/2009							
07-0145	10/14/2009							
06-0325	10/15/2009							
09-0023	10/21/2009							
07-0105	10/21/2009							
08-0122	10/22/2009							
RIR100732	10/22/2009							
07-0466	10/20/2009							

Insert information starting in cell B4	
Facility Information	
Application #	InspectionDate
06-0520	9/30/2008
07-0209	9/30/2008
06-0318	9/30/2008
07-0432	9/25/2008
Royal Mills	9/25/2008
RIR100661	9/25/2008
QDC	6/6/2008
RIR100662	9/16/2008
RIR100497	9/25/2008
RIR100676	9/25/2008
RIR100677	10/2/2008
RIR100673	9/16/2008
RIR100619	9/16/2008
07-0183	10/3/2008
07-0142	10/3/2008
URI	9/25/2008
RIR100626	9/25/2008
RIR100653	9/25/2008
RIR100651	9/25/2008
RIR100398	9/25/2008
RIR100635	9/25/2008
07-0199	9/25/2008
07-0202	9/25/2008
RIR100634	9/25/2008
RIR100667	9/25/2008
07-0439	9/25/2008
07-0486	9/25/2008
07-0151	9/25/2008
07-0348	9/25/2008
RIR100695	7/30/2009
RIR100691	7/29/2009
08-139	7/23/2009
08-357	7/22/2009
RIR100705	7/22/2009
RIR100701	7/21/2009
RIR100687	7/15/2009
RIR100706	7/15/2009
RIR100723	7/15/2009
RIR100709	7/7/2009
RIR100721	7/7/2009
08-099	7/16/2009
08-239	6/17/2009
08-372	7/14/2009
07-256	6/25/2009
RIR100718	8/4/2009

Facility Information			
Application #	InspectionDate		
RIR100728	8/5/2009		
08-150	8/5/2009		
08-375	8/7/2009		
09-0022	8/13/2009		
RIR-100722	8/14/2009		
08-203	8/4/2009		
RIR100619	8/6/2009		
08-306	8/13/2009		
08-115	8/14/2009		
04-0645	8/18/2009		
RIR100729	8/20/2009		
RIR100677	8/20/2009		
08-121	8/20/2009		
09-0017	8/21/2009		
08-0351	8/24/2009		
06-0062	8/24/2009		
08-0230	9/1/2009		
RIR100720	8/25/2009		
08-0136	8/25/2009		
RIR100702	8/25/2009		
06-0103	8/25/2009		
08-0198	9/2/2009		
RIR100636	10/30/2008		
RIR100664	10/30/2008		
RIR100685	9/1/2009		
RIR100686	9/1/2009		
RIR100656	6/6/2008		
RIR100639	10/30/2008		
RIR100716	9/8/2009		
08-0289	9/8/2009		
RIR100661	9/8/2009		
RIR100528	9/8/2009		
RIR100432	9/8/2009		
RIR100727	9/10/2009		
08-0313	9/14/2009		
08-0084	9/15/2009		
09-0119	9/15/2009		
08-0073	9/18/2009		
RIR100726	9/18/2009		
RIR100711	9/22/2009		
RIR100712	9/22/2009		
07-0479	9/28/2009		
07-0472	10/5/2009		
07-0436	10/8/2009		
07-0416	10/8/2009		
07-0300	6/16/2009		

Facility Information			
Application #	InspectionDate		
09-0037	10/15/2009		
07-0329	10/15/2009		
RIR100736	10/14/2009		
07-0145	10/14/2009		
06-0325	10/15/2009		
09-0023	10/21/2009		
07-0105	10/21/2009		
08-0122	10/22/2009		
RIR100732	10/22/2009		
07-0466	10/20/2009		

Facility Information			
Application #	InspectionDate		

Facility Information			
Application #	InspectionDate		

Facility Information			
Application #	InspectionDate		

Facility Information			
Application #	InspectionDate		

Facility Information			
Application #	InspectionDate		

US EPA ARCHIVE DOCUMENT

Facility Information			
Application #	InspectionDate		

Facility Information			
Application #	InspectionDate		

Facility Information			
Application #	InspectionDate		

Please type in the program title you would like for all your graphs in cell B3 below:

Rhode Island MS4/Wetlands Compliance Certification

For Reference purposes only EBPI Number (From Round 1 Raw Data)	Please input the desired EBPI Numbers and Names for tables and charts	
	EBPI Number	EBPI Descriptions
A1	A1	Did you notify DEM prior to the commencement of site alterations?
A2	A2	Are copies of the permit and the stamped approved plans kept on-site for review by DEM?
A3	A3	records of the City or Town of your project within 10 days of the receipt of the permit?
A4	A4	weather and at least 12 x 18 inches, which bodily identifies the initials "DEM"?
A5	A5	Have you properly identified and marked the limits of diturbanc (LOD) detailed on the approved site plans?
A6	A6	on the approved site plans installed at the site prior to or comensurate with the site alterations?
A7	A7	replaced, supplemented, or modified as necessary throughout the life of the project?
A8	A8	bales, twine or wire, and/or silt fencees, removed after all disturbed soils were permanently stabilized?
A9	A9	culverts,swales and any other stormwater management control features been constructed/installed in accordance with the approved
A10a	A10a	Did you inspect the material to ensure that it is clean and free of any matter that could pollute any freshwater wetland?
A10b	A10b	Have temporary erosion and sediment controlls been placed around all areas where fill has been placed?
A11a	A11a	Were surveys, checks and/or engineering tests performed to ensure mitigative features were properly installed and are operational?
A11b	A11b	Have you filed a maintenance plan indicating the parties responsible for future maintenance of the mitigative features?
B1	B1	Do you have a copy of the Storm Water pollution Prevention plan (SWPPP) on site at all times?
B2	B2	At least once every 7 days and with 24 hours after significant rain events, do you inspect all stormwater control measures, etc.?
C1	C1	Have you installed erosion controls to cover all potential erosion hazards on site?
C2	C2	downslopes that may direct runoff to adjacent properties or water bodies?
C3	C3	Have you made provisions for wind erosion control and dust control?

Items in these 3 columns
EBPI Nickname (Keep Short!)
Notify DEM
Plans On -site
Record Permit
Post Sign
Mark LOD
E.C. Installed per Site Plan
Maintain E.C.
E.C. Removed
S.W. Installed per Site Plan
Inspect Fill Material
E.C. Around Fill
Mitigative Features Installed
Maintain Mitigaive Features
SWPPP On Site
Site Inspections
Installed E.C.
install E.C. @ SS/WB
Wind/Dust Controll

Assumptions

Assumptions	
How many facilities is your ERP focusing on? <i>Estimate this number for population size if you do not know.</i>	500
What confidence level do you want? <i>Select 90% or 95% from drop-down menu.</i>	95% <input type="button" value="▼"/>

Rhode Island MS4/Wetlands Compliance Certification

Estimated Proportion of Facilities Properly Addressing Each EBPI

Single Round of Random Inspections

Start of Collection: 6/6/2008 Eligible Facilities: 100
 End of Collection: 10/22/2009 Confidence Level: 95%

EBPI Number	EBPI Description	Percentage of Facilities			Counts		
		Lower Bound	Point Estimate	Upper Bound	Positive Responses	Valid Responses	Eligible Responses
A1	Did you notify DEM prior to the commencement of site alterations?	21.4%	33.9%	46.5%	15	46	46
A3	Did you record your permit/letter of authorization in the land evidence records of the City or Town of your project within 10 days of the	64.2%	75.6%	87.0%	35	45	45
A4	Did you erect or post a sign with the permit number resistant to the weather and at least 12 x 18 inches, which bodily identifies the initials	37.6%	51.0%	64.4%	23	45	45
A5	Have you properly identified and marked the limits of disturbed (LOD) detailed on the approved site plans?	41.8%	55.1%	68.5%	25	45	45
B1	Do you have a copy of the Storm Water pollution Prevention plan (SWPPP) on site at all times?	24.5%	33.7%	42.9%	27	82	82
B2	At least once every 7 days and with 24 hours after significant rain events, do you inspect all stormwater control measures, etc.?	21.3%	30.2%	39.1%	24	82	82
C1	Have you installed erosion controls to cover all potential erosion hazards on site?	44.7%	53.5%	62.4%	51	95	95
C2	Have you installed sediment controls in all disturbed side slopes and downslopes that may direct runoff to adjacent properties or water	52.6%	61.8%	71.1%	53	85	85
C3	Have you made provisions for wind erosion control and dust control?	63.3%	73.2%	83.1%	47	63	63
C4	have you made sure that nearby storm drains are protected to prevent any sediment/pollutants from entering the drains?	41.7%	51.9%	62.1%	39	75	75
C5	Have material stockpiles been stabilized or isolated?	59.3%	68.9%	78.4%	51	73	73
C6	Are you properly maintaining BMPs such as filter fabric, hay bales and silt fencing?	31.0%	39.8%	48.6%	37	94	94
C8	Do you remove any visible sediment or debris at drains and discharge locations?	29.3%	40.6%	51.9%	24	60	60
D1	Does the site have graveled access entrance and exit drives as well as parking areas to reduce tracking of sediment from vehicles?	44.4%	54.0%	63.6%	45	83	83
D2	Do you have containers in place for the storage and disposal of waste material?	70.6%	79.8%	88.9%	49	60	60
D3	Are hazardous material spill kits in place and do you have enough materials as prescribed in the SWPP to adequately prevent spills	38.7%	52.0%	65.3%	24	46	46
D5	Do you perform good housekeeping, making sure that exposure of all debris and trash to precipitation is minimized by cleaning up daily?	73.4%	80.5%	87.6%	76	93	93
0	0	N/A	N/A	N/A	0	0	0
0	0	N/A	N/A	N/A	0	0	0
0	0	N/A	N/A	N/A	0	0	0
0	0	N/A	N/A	N/A	0	0	0
0	0	N/A	N/A	N/A	0	0	0
0	0	N/A	N/A	N/A	0	0	0

Software generating this presentation created by The Cadmus Group, Inc.

Statistical calculations based upon: "Vermont Department of Environmental Conservation (DEC) Pilot Environmental Results Program (ERP) for Retail Gas Stations: Sampling Options and Analytical Approaches." DRAFT, August 5, 2005. Krop, Richard and Michael Crow. The Cadmus Group, Inc. (http://www.epa.gov/perfmist/erp/roadmap/resources/vt_retailgas_statmeth_8-5-2005_draft.pdf)

US EPA ARCHIVE DOCUMENT

Rhode Island MS4/Wetlands Compliance Certification

Estimated Percentage of Facilities Addressing Each EBPI By EBPI Type

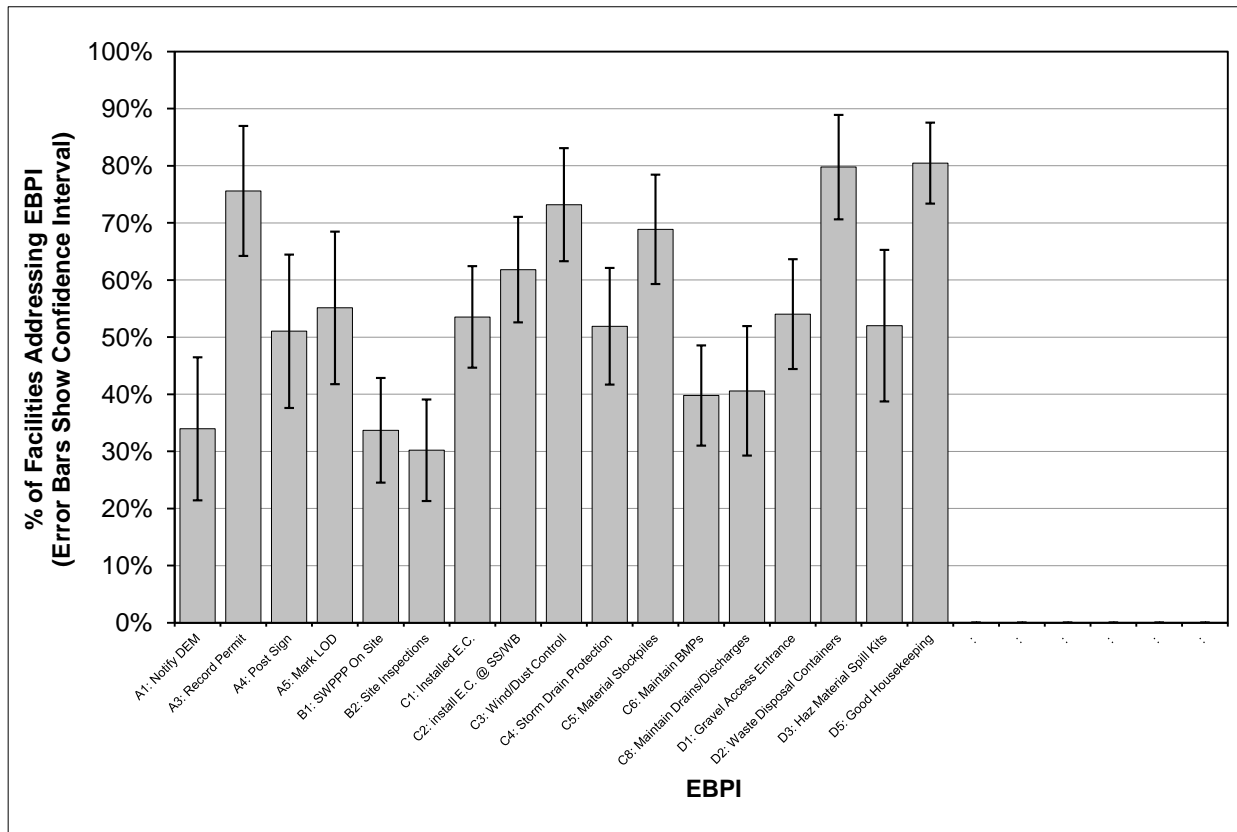
Single Round of Random Inspections

Start of Collection: 6/6/2008

Eligible Facilities: 100

End of Collection: 10/22/2009

Confidence Level: 95%



Software generating this presentation created by The Cadmus Group, Inc.

Statistical calculations based upon: "Vermont Department of Environmental Conservation (DEC) Pilot Environmental Results Program (ERP) for Retail Gas Stations: Sampling Options and Analytical Approaches." DRAFT. August 5, 2005. Krop, Richard and Michael Crow. The Cadmus Group, Inc. (http://www.epa.gov/perfmist/erp/roadmap/resources/vt_retailgas_statmeth_8-5-2005_draft.pdf)

Rhode Island MS4/Wetlands Compliance Certification

Estimated Average Facility EBPI Score*

Single Round of Random Inspections

Start of Collection: 6/6/2008
End of Collection: 10/22/2009

Summary Facility Statistics	
Number of Facilities in Sample	100
Average Facility EBPI Score, Lower Bound	51.1%
Average Facility EBPI Score, Point Estimate	55.6%
Average Facility EBPI Score, Upper Bound	60.1%

Used For Calculations	
Confidence Level	95%
Value of Standard Normal, $Z_{(1-\alpha/2)}$	1.96
$t_{(\alpha/2, n-1)}$ distribution	1.98
Standard Deviation	25%
Half Width of CI	4.5%

* The Facility EBPI Score is the percentage of applicable indicators that the facility is achieving successfully. For instance, if 10 out of 20 possible indicators are relevant to the facility, and the facility receives a favorable evaluation on six of those 10, the Facility EBPI Score for the facility is 60%.

Software generating this presentation created by The Cadmus Group, Inc.

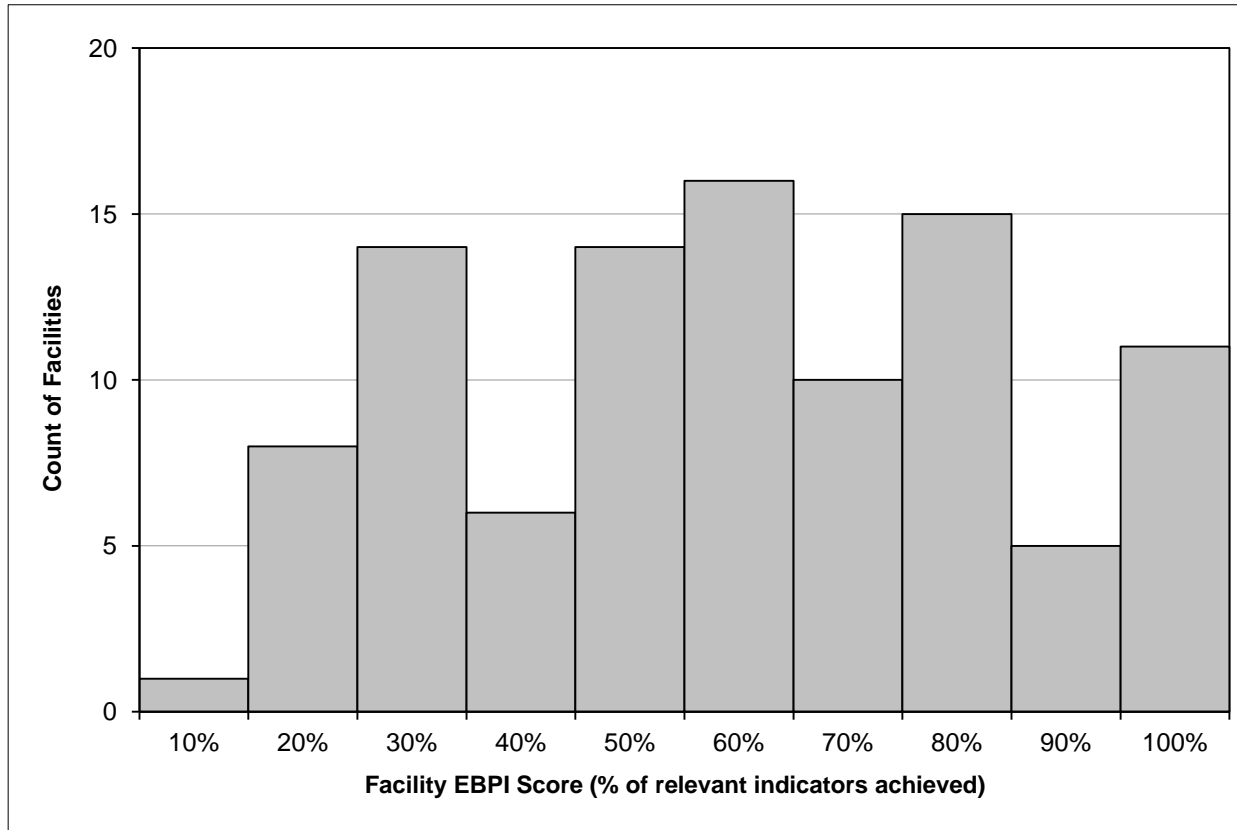
Statistical calculations based upon: "Vermont Department of Environmental Conservation (DEC) Pilot Environmental Results Program (ERP) for Retail Gas Stations: Sampling Options and Analytical Approaches." DRAFT. August 5, 2005. Krop, Richard and Michael Crow. The Cadmus Group, Inc.
(http://www.epa.gov/perfmist/erp/roadmap/resources/vt_retailgas_statmeth_8-5-2005_draft.pdf)

Rhode Island MS4/Wetlands Compliance Certification

Count of Sampled Facilities, by Facility EBPI Score Decile

Single Round of Random Inspections

Start of Collection: 6/6/2008 Eligible Facilities: 100
End of Collection: 10/22/2009 Confidence Level: 95%



Software generating this presentation created by The Cadmus Group, Inc.

Statistical calculations based upon: "Vermont Department of Environmental Conservation (DEC) Pilot Environmental Results Program (ERP) for Retail Gas Stations: Sampling Options and Analytical Approaches." DRAFT. August 5, 2005. Krop, Richard and Michael Crow. The Cadmus Group, Inc. (http://www.epa.gov/perfmist/erp/roadmap/resources/vt_retailgas_statmeth_8-5-2005_draft.pdf)

Rhode Island MS4/Wetlands Compliance Certification

Percentage of Sampled Facilities, by Facility EBPI Score* Decile

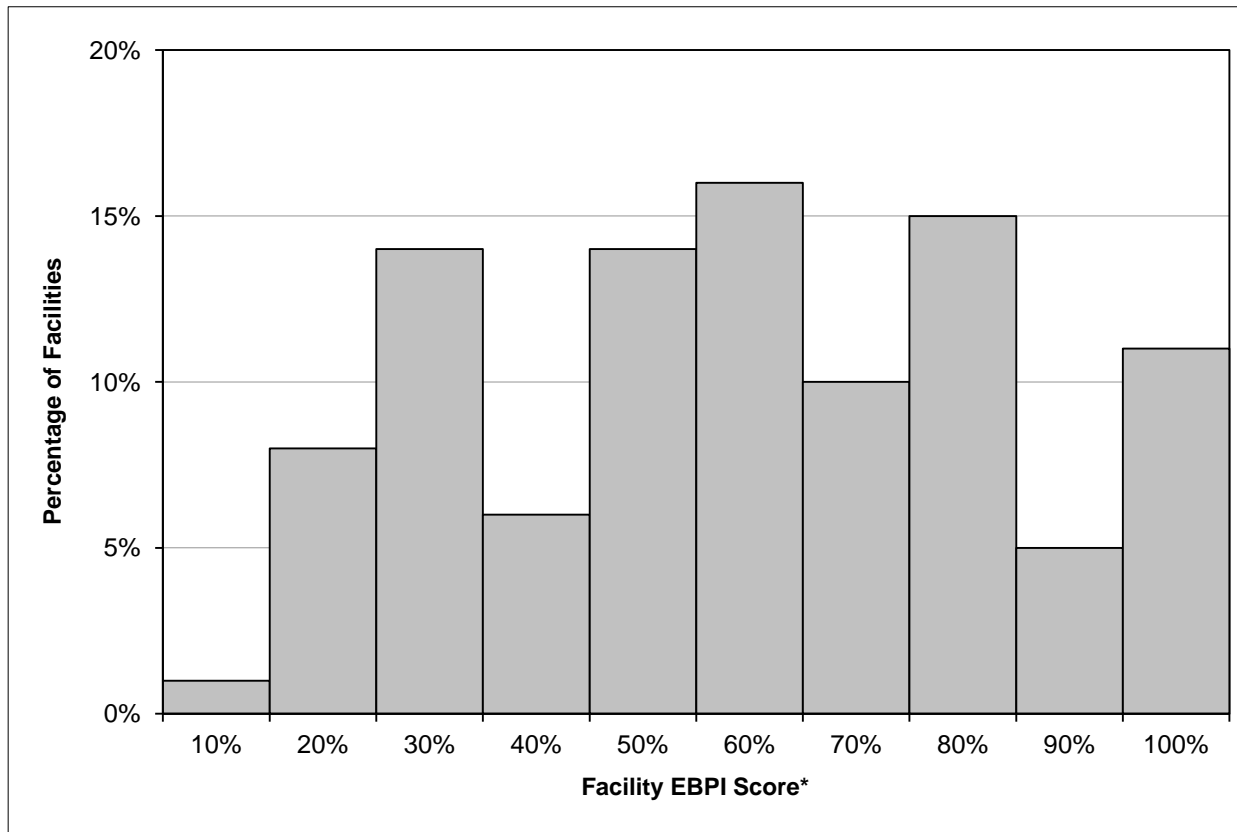
Single Round of Random Inspections

Start of Collection: 6/6/2008

Eligible Facilities: 100

End of Collection: 10/22/2009

Confidence Level: 95%



* The Facility EBPI Score is the percentage of applicable indicators that the facility is achieving successfully. For instance, if 10 out of 20 possible indicators are relevant to the facility, and the facility receives a favorable evaluation on six of those 10, the Facility EBPI Score for the facility is 60%.

Software generating this presentation created by The Cadmus Group, Inc.

Statistical calculations based upon: "Vermont Department of Environmental Conservation (DEC) Pilot Environmental Results Program (ERP) for Retail Gas Stations: Sampling Options and Analytical Approaches." DRAFT. August 5, 2005. Krop, Richard and Michael Crow. The Cadmus Group, Inc. (http://www.epa.gov/perfmist/erp/roadmap/resources/vt_retailgas_statmeth_8-5-2005_draft.pdf)