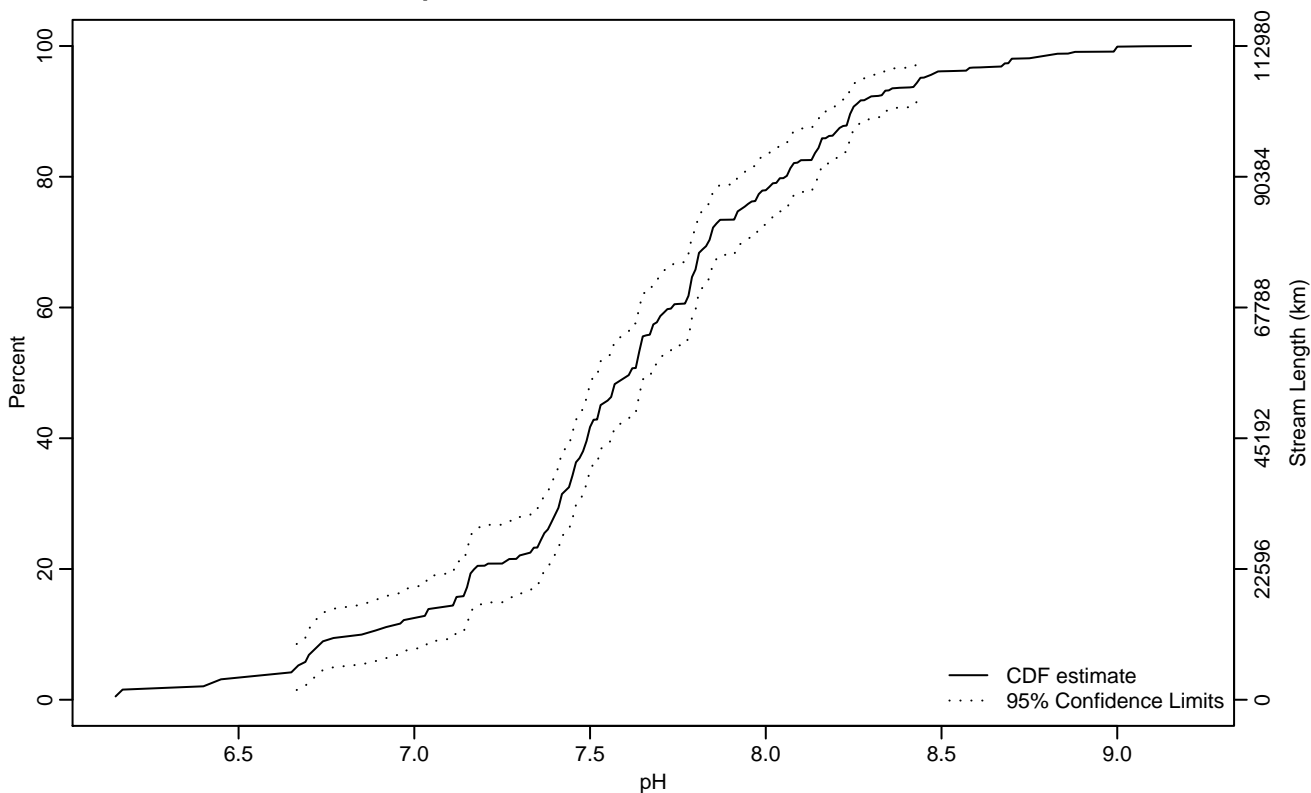


US EPA ARCHIVE DOCUMENT

Figure chem-1 Indicator: pH Subpopulation: Region 10

Empirical Cumulative Distribution Estimate



Summary Statistics

| Statistic | Est | LCB | UCB |
|-----------|------|------|------|
| 5Pct | 6.67 | 6.29 | 6.73 |
| 10Pct | 6.85 | 6.67 | 7.11 |
| 25Pct | 7.37 | 7.16 | 7.42 |
| 50Pct | 7.61 | 7.52 | 7.68 |
| 75Pct | 7.93 | 7.83 | 8.06 |
| 90Pct | 8.24 | 8.18 | 8.42 |
| 95Pct | 8.44 | 8.30 | 8.70 |
| Mean | 7.61 | 7.54 | 7.68 |
| Std Dev | 0.53 | 0.47 | 0.59 |

Empirical Density Estimate

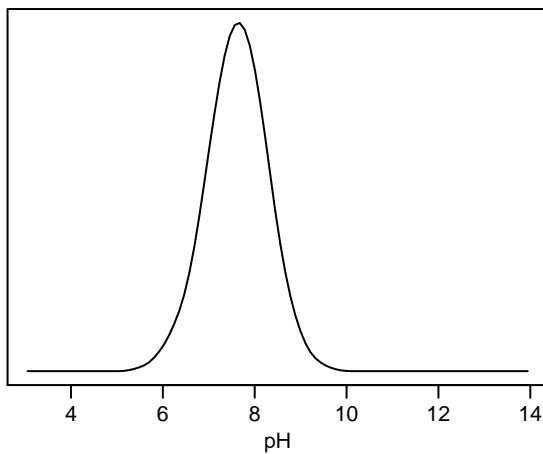
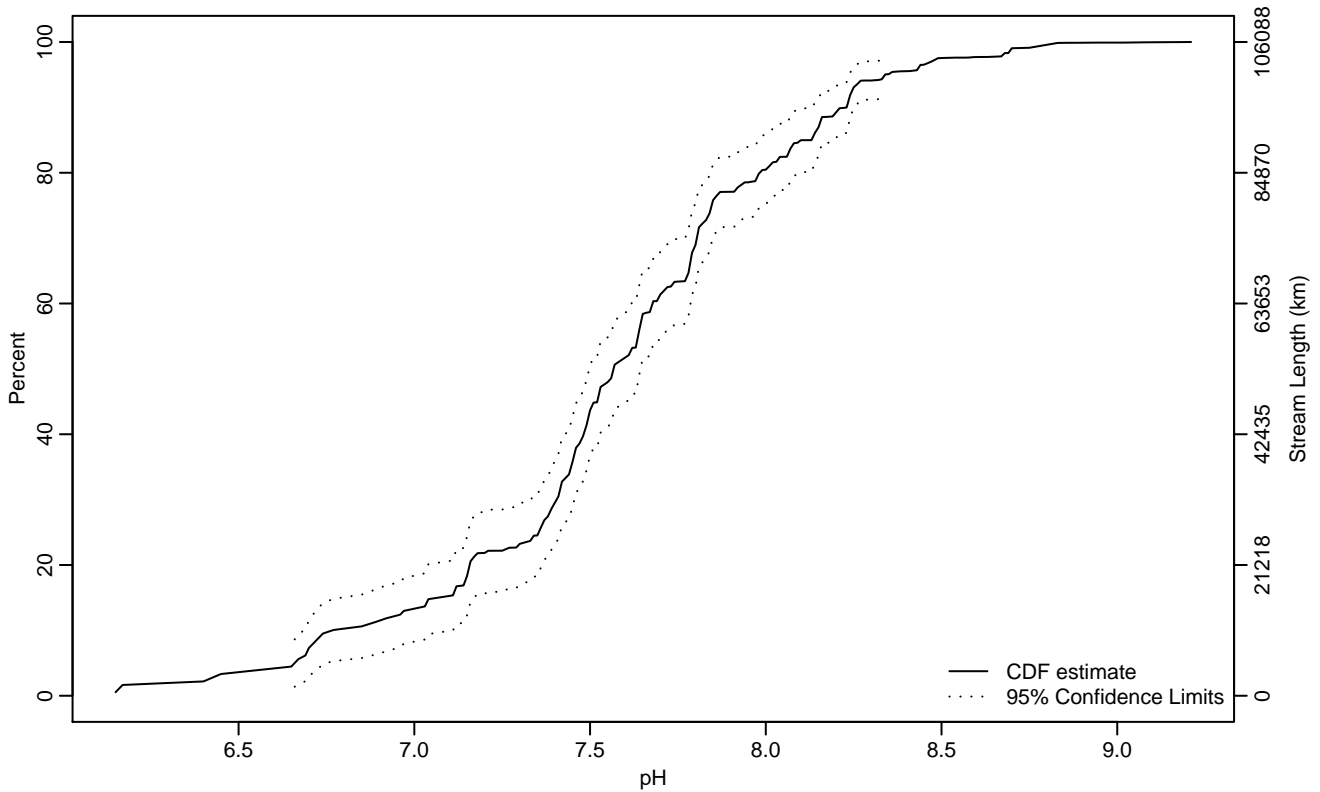


Figure chem-2 Indicator: pH Subpopulation: MT

Empirical Cumulative Distribution Estimate



Summary Statistics

| Statistic | Est | LCB | UCB |
|-----------|------|------|------|
| 5Pct | 6.66 | 6.17 | 6.72 |
| 10Pct | 6.77 | 6.66 | 7.04 |
| 25Pct | 7.35 | 7.15 | 7.41 |
| 50Pct | 7.57 | 7.50 | 7.64 |
| 75Pct | 7.85 | 7.80 | 8.01 |
| 90Pct | 8.23 | 8.14 | 8.27 |
| 95Pct | 8.34 | 8.24 | 8.67 |
| Mean | 7.57 | 7.50 | 7.64 |
| Std Dev | 0.50 | 0.45 | 0.56 |

Empirical Density Estimate

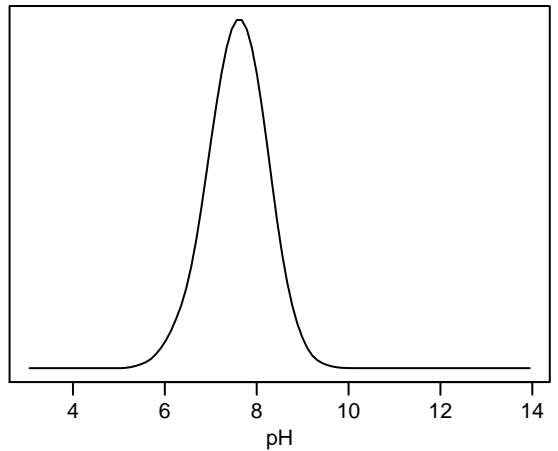
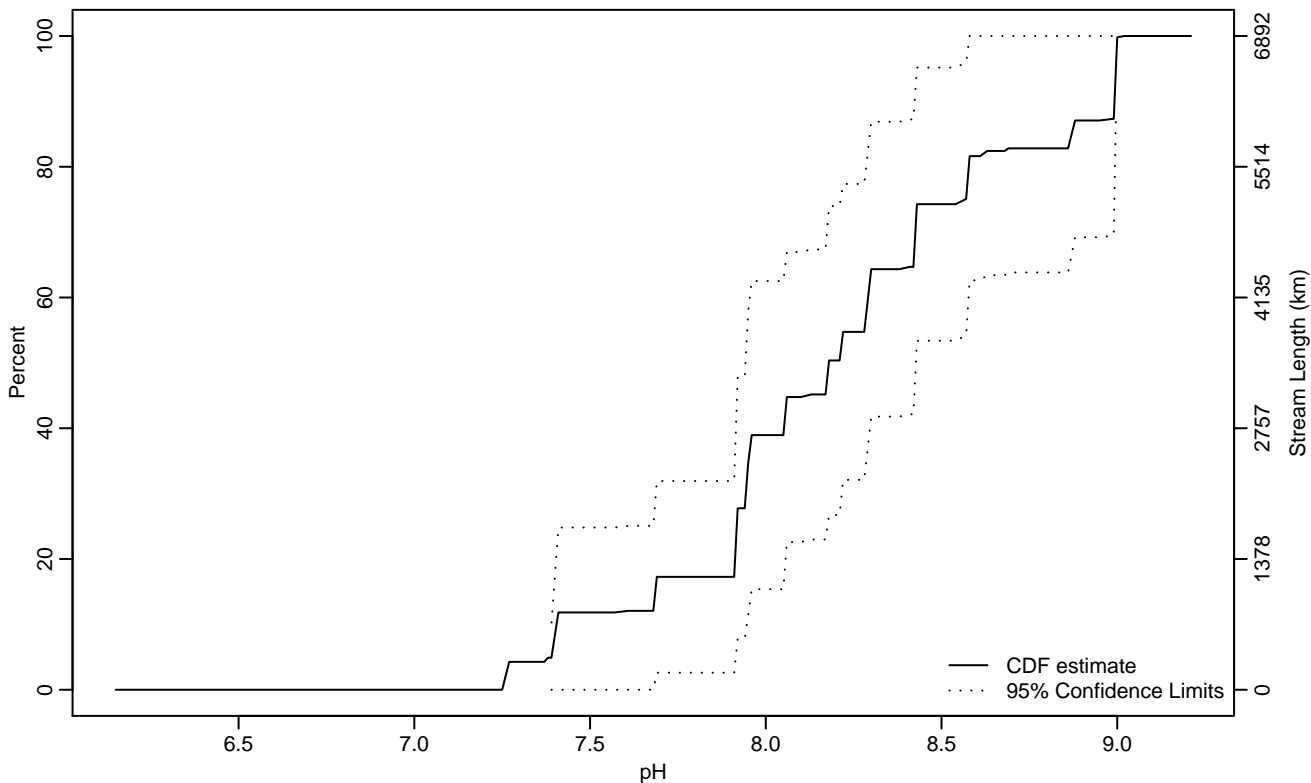


Figure chem-3 Indicator: pH Subpopulation: XE

Empirical Cumulative Distribution Estimate



Summary Statistics

| Statistic | Est | LCB | UCB |
|-----------|------|------|------|
| 5Pct | 7.39 | 6.15 | 7.41 |
| 10Pct | 7.40 | 7.27 | 7.69 |
| 25Pct | 7.92 | 7.40 | 8.05 |
| 50Pct | 8.18 | 7.92 | 8.43 |
| 75Pct | 8.57 | 8.22 | 9 |
| 90Pct | 8.99 | 8.43 | 9.02 |
| 95Pct | 9 | 8.57 | 9.02 |
| Mean | 8.20 | 7.97 | 8.44 |
| Std Dev | 0.47 | 0.37 | 0.56 |

Empirical Density Estimate

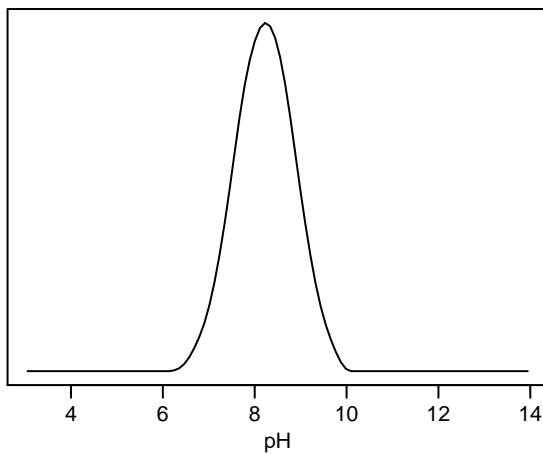
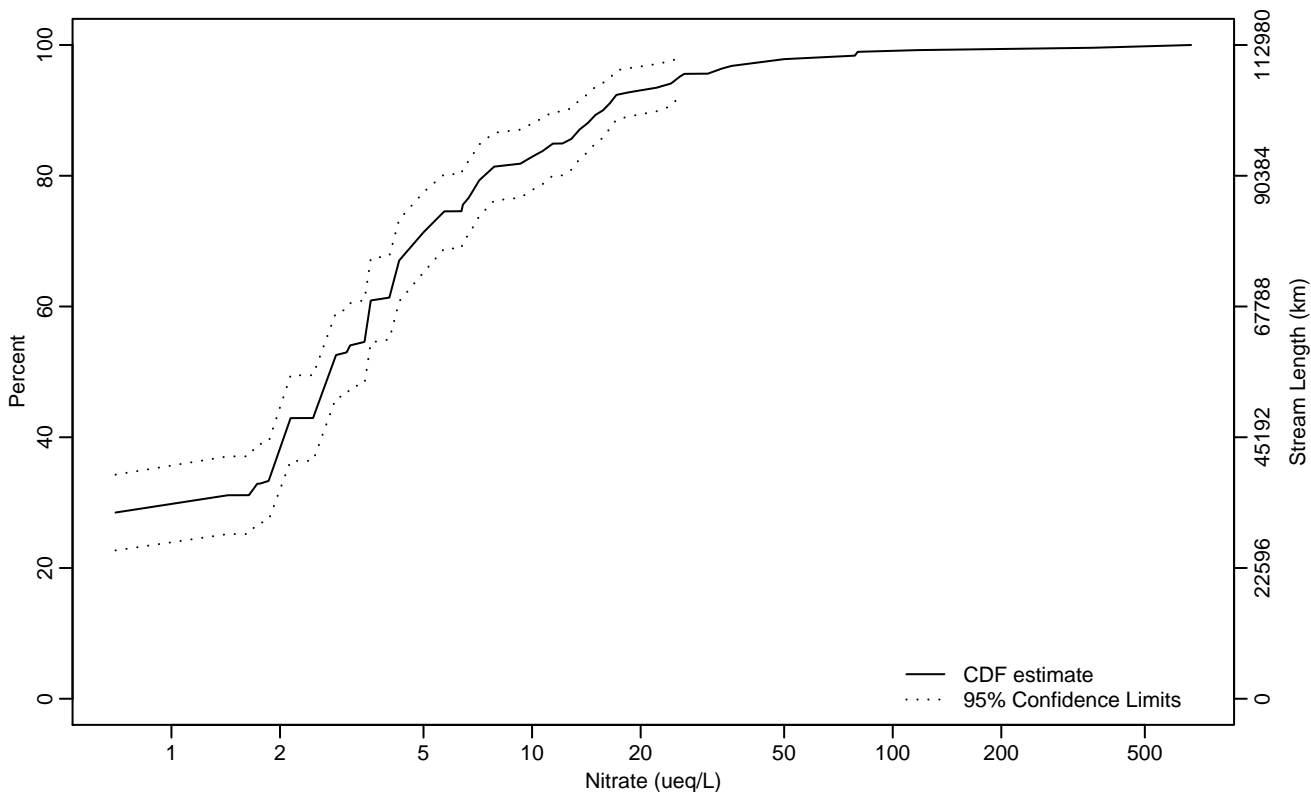


Figure chem-4 Indicator: Nitrate Subpopulation: Region 10

Empirical Cumulative Distribution Estimate



Summary Statistics

| Statistic | Est | LCB | UCB |
|-----------|-------|-------|-------|
| 5Pct | 0.70 | 0.70 | 0.70 |
| 10Pct | 0.70 | 0.70 | 0.70 |
| 25Pct | 0.70 | 0.70 | 1.39 |
| 50Pct | 2.76 | 2.49 | 3.47 |
| 75Pct | 6.40 | 4.65 | 7.63 |
| 90Pct | 15.71 | 12.93 | 24.41 |
| 95Pct | 25.47 | 16.68 | 78.74 |
| Mean | 10.71 | 5.25 | 16.18 |
| Std Dev | 40.58 | 18.48 | 62.67 |

Empirical Density Estimate

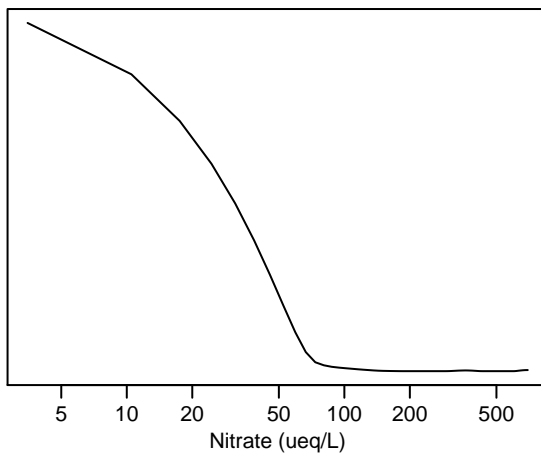
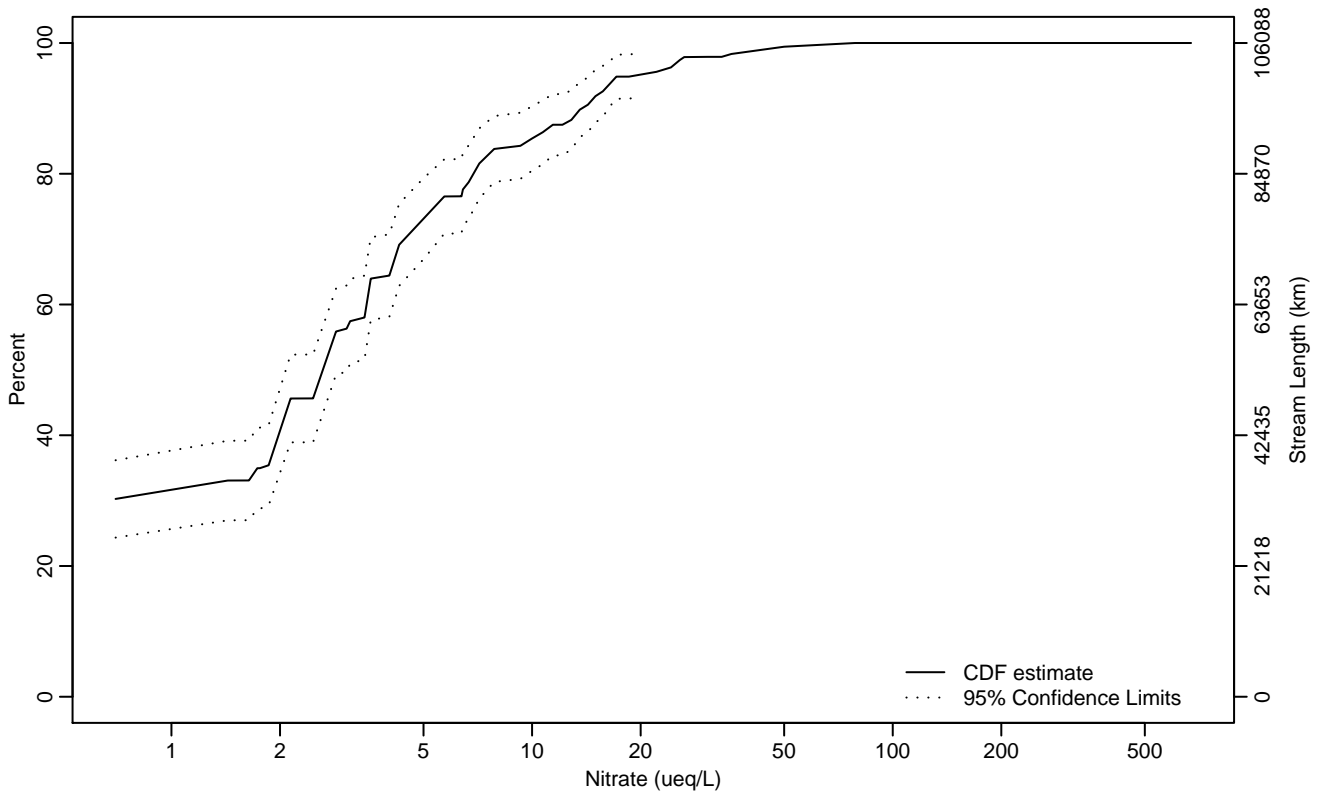


Figure chem-5 Indicator: Nitrate Subpopulation: MT

Empirical Cumulative Distribution Estimate



Summary Statistics

| Statistic | Est | LCB | UCB |
|-----------|-------|-------|-------|
| 5Pct | 0.70 | 0.70 | 0.70 |
| 10Pct | 0.70 | 0.70 | 0.70 |
| 25Pct | 0.70 | 0.70 | 0.92 |
| 50Pct | 2.64 | 2.07 | 3.09 |
| 75Pct | 5.39 | 4.26 | 7.08 |
| 90Pct | 13.75 | 10.27 | 16.73 |
| 95Pct | 19.27 | 14.85 | 36.41 |
| Mean | 5.62 | 4.35 | 6.89 |
| Std Dev | 8.59 | 5.75 | 11.44 |

Empirical Density Estimate

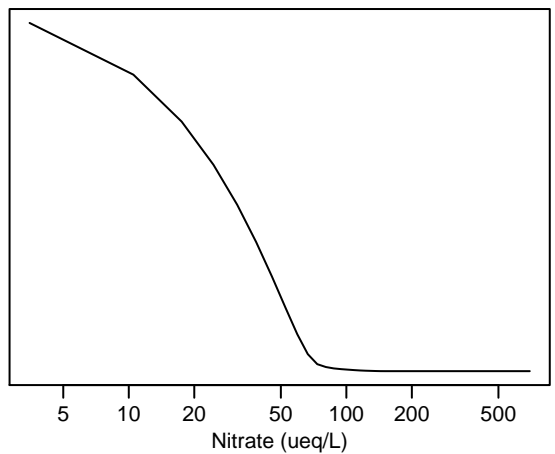
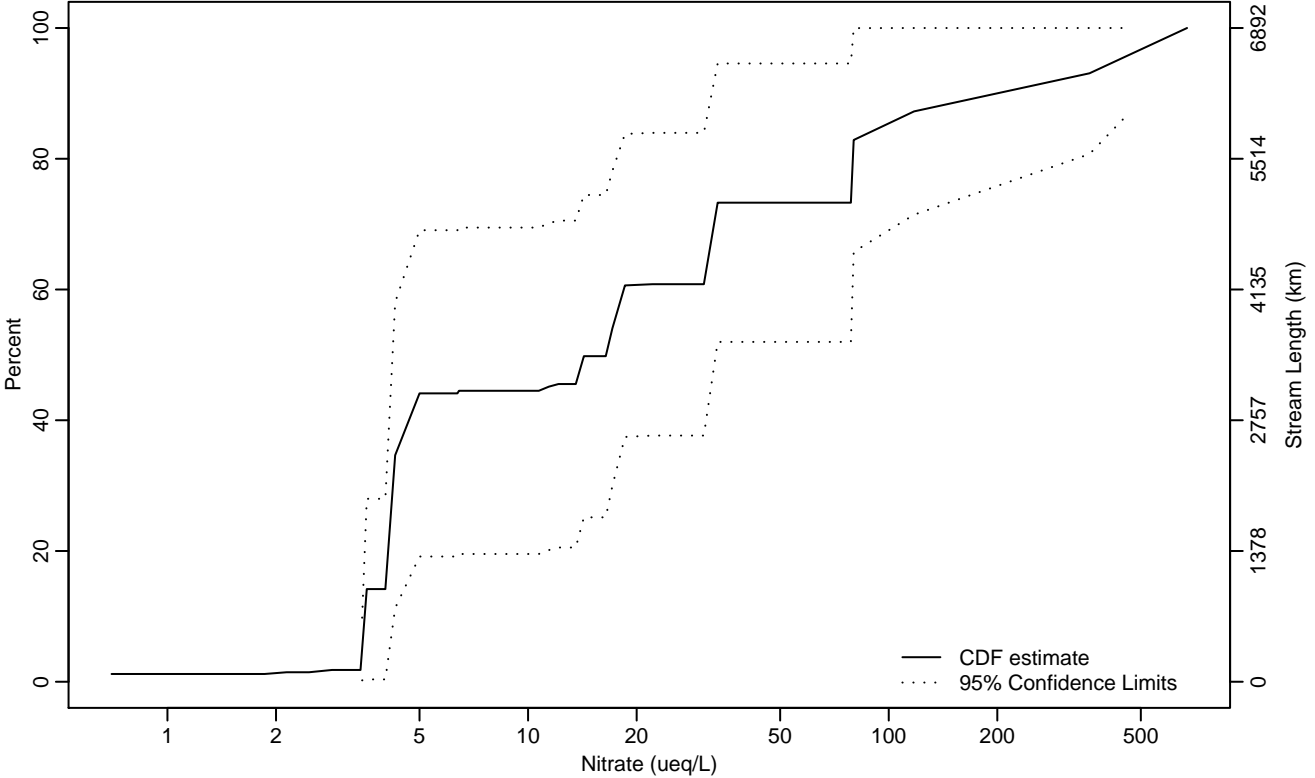


Figure chem-6 Indicator: Nitrate Subpopulation: XE

Empirical Cumulative Distribution Estimate



Summary Statistics

| Statistic | Est | LCB | UCB |
|-----------|--------|-------|--------|
| 5Pct | 3.47 | 3.45 | 3.48 |
| 10Pct | 3.52 | 3.49 | 3.55 |
| 25Pct | 4.16 | 3.52 | 4.68 |
| 50Pct | 16.45 | 4.17 | 78.68 |
| 75Pct | 78.79 | 17.11 | 493.83 |
| 90Pct | 232.37 | 78.69 | 671.78 |
| 95Pct | 447.02 | 79.95 | 671.78 |
| Mean | 89.09 | 1.80 | 176.39 |
| Std Dev | 159.44 | 66.74 | 252.13 |

Empirical Density Estimate

