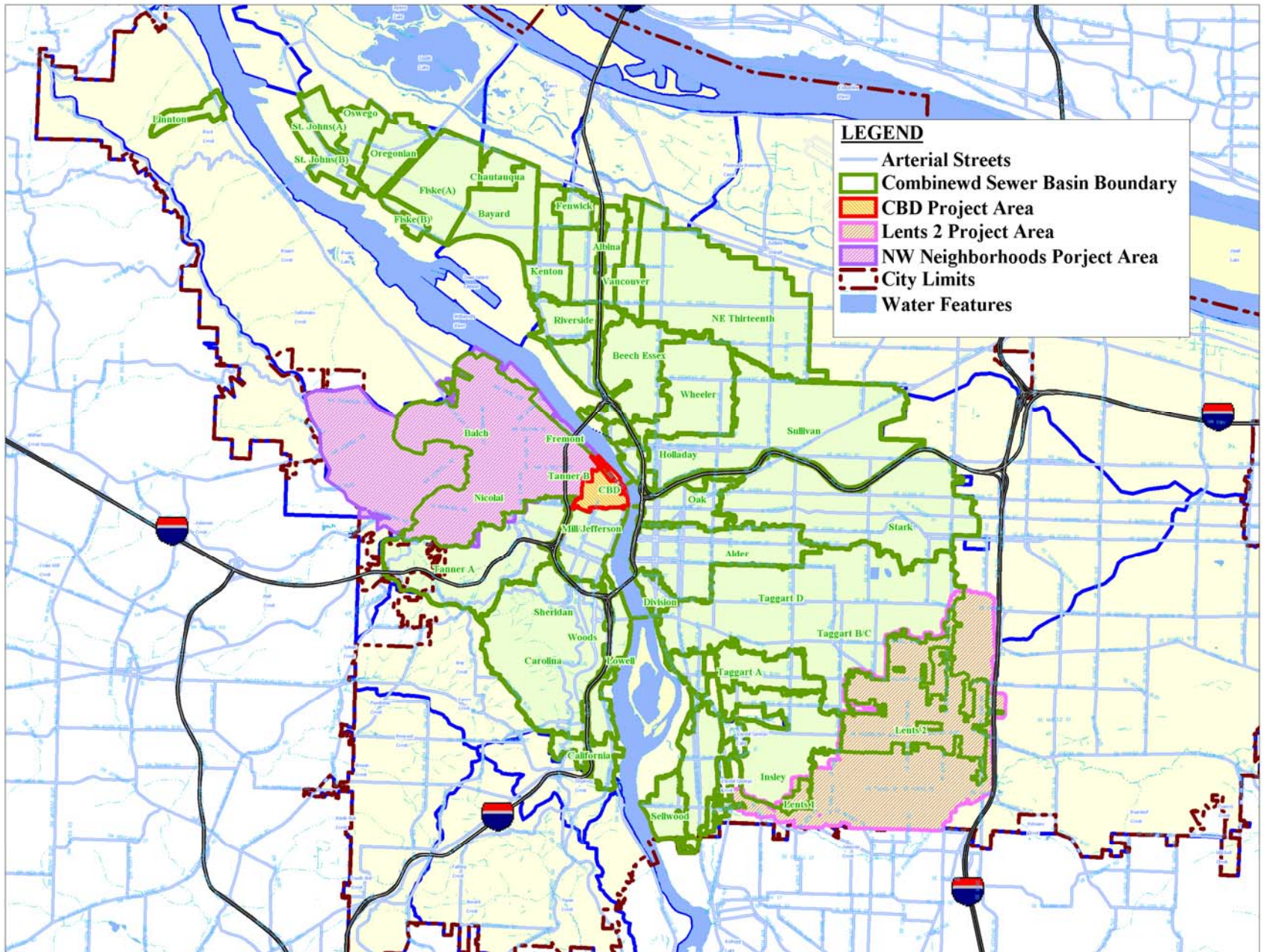
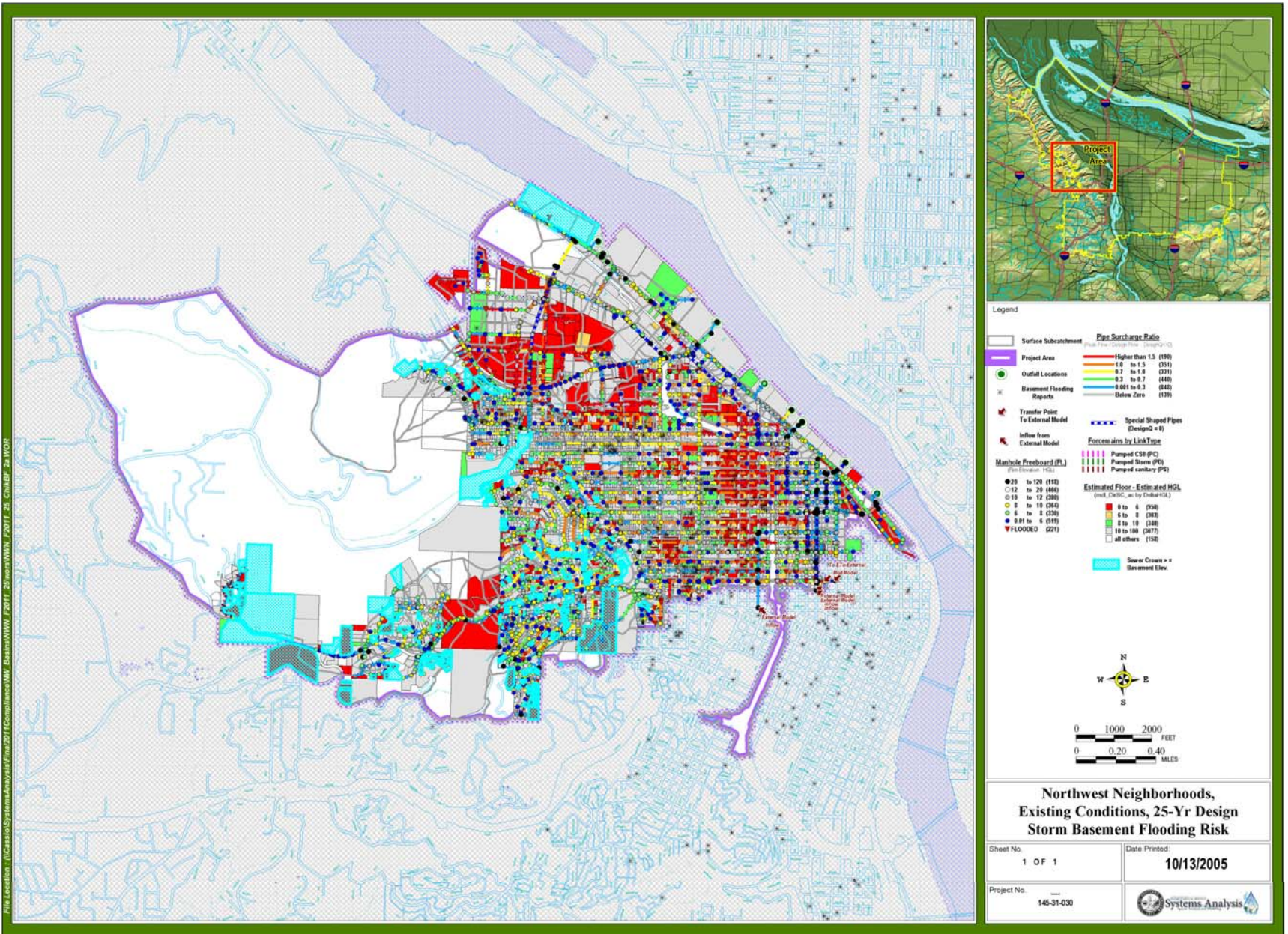


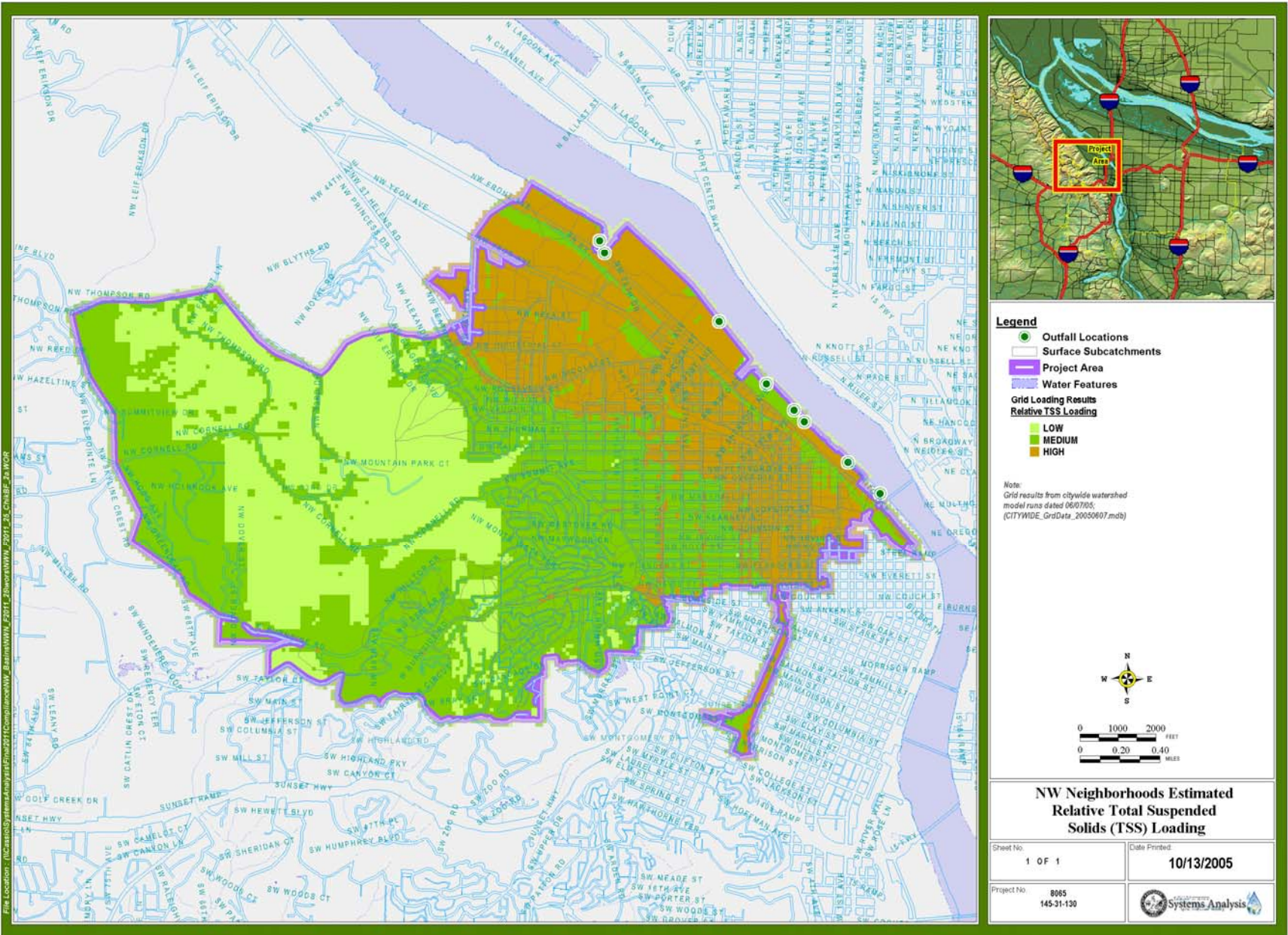
US EPA ARCHIVE DOCUMENT



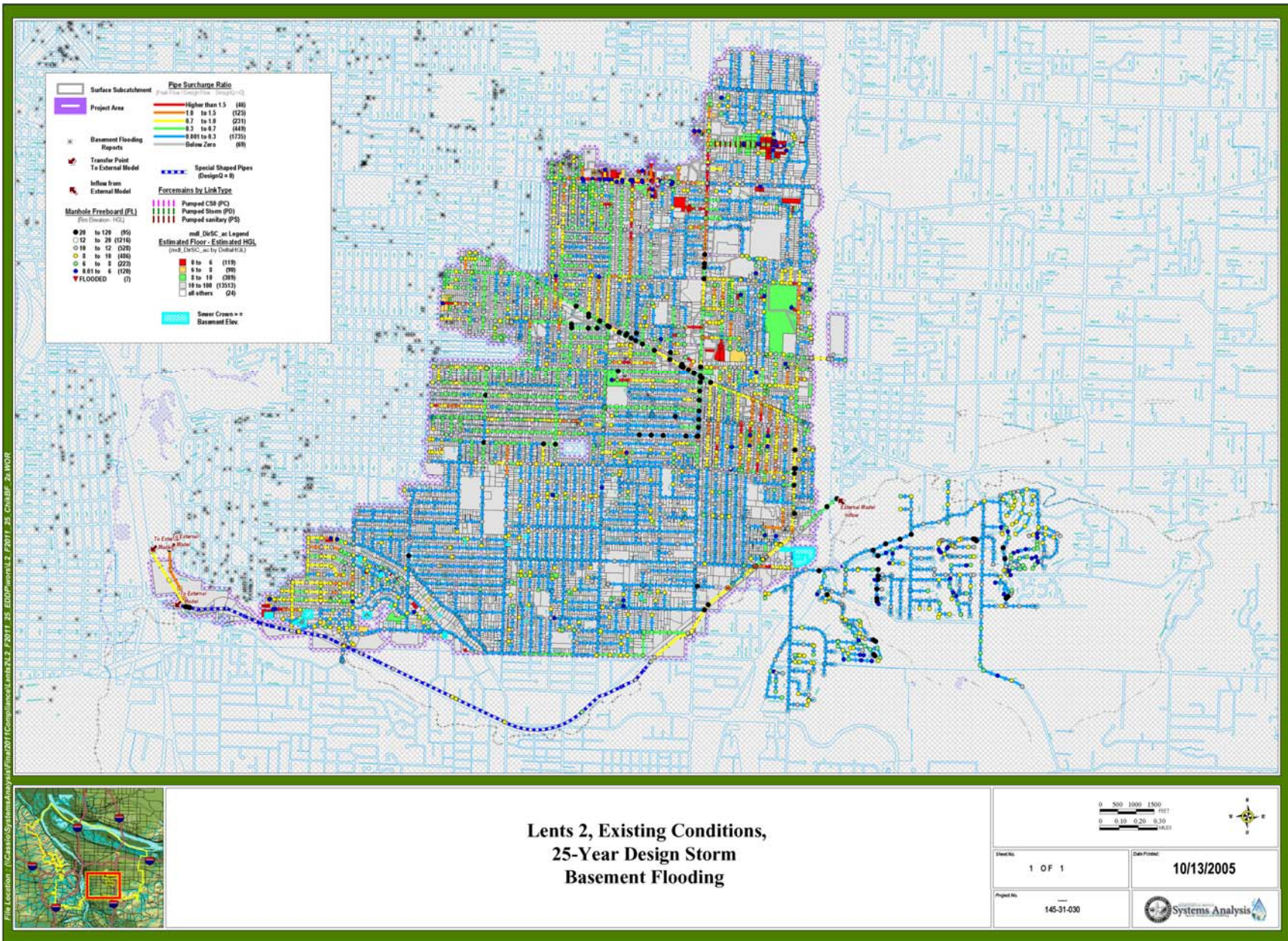
City of Portland Overview



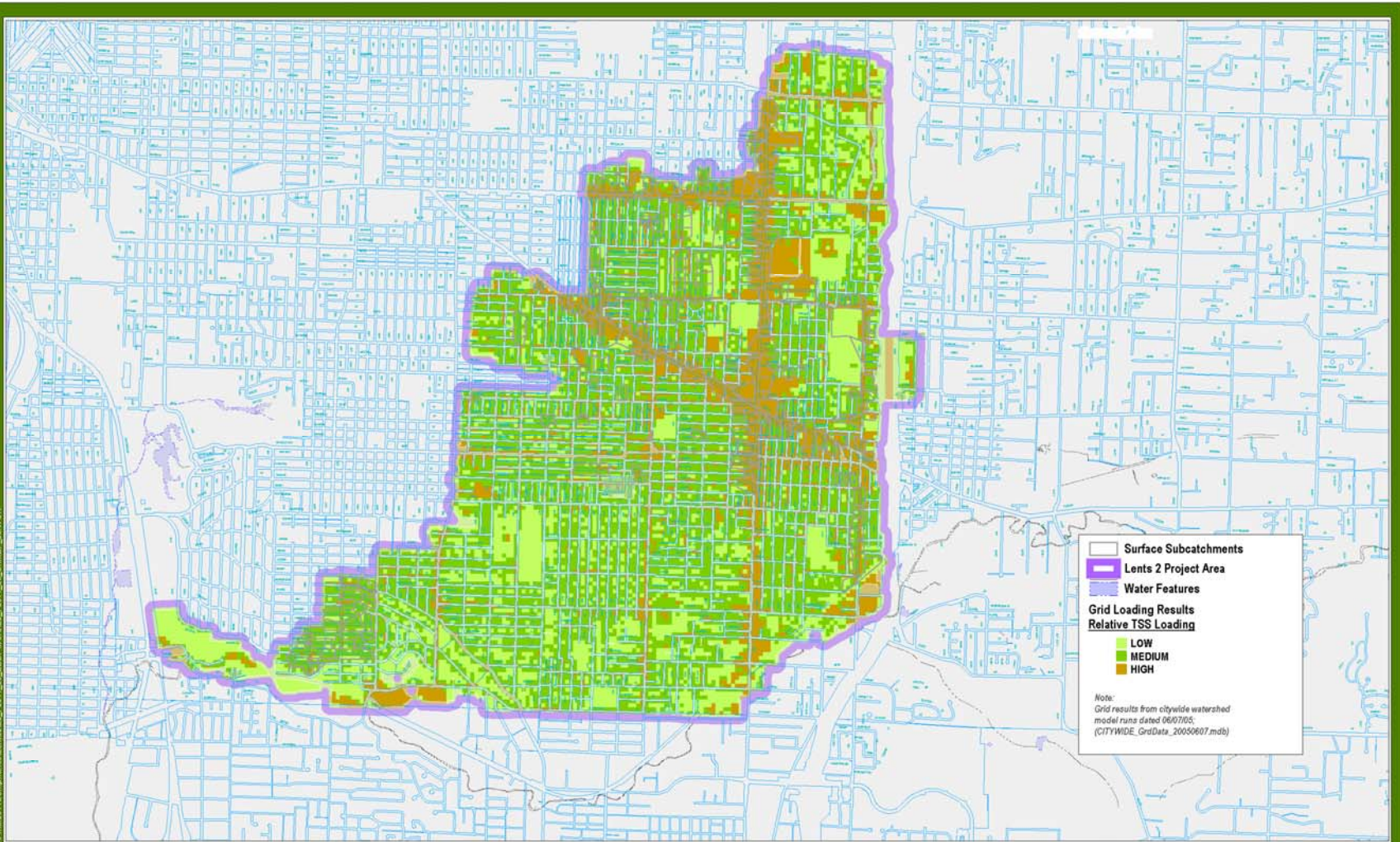
NW Neighborhood Basement Flooding Risk



NW Neighborhoods Estimated TSS Loading



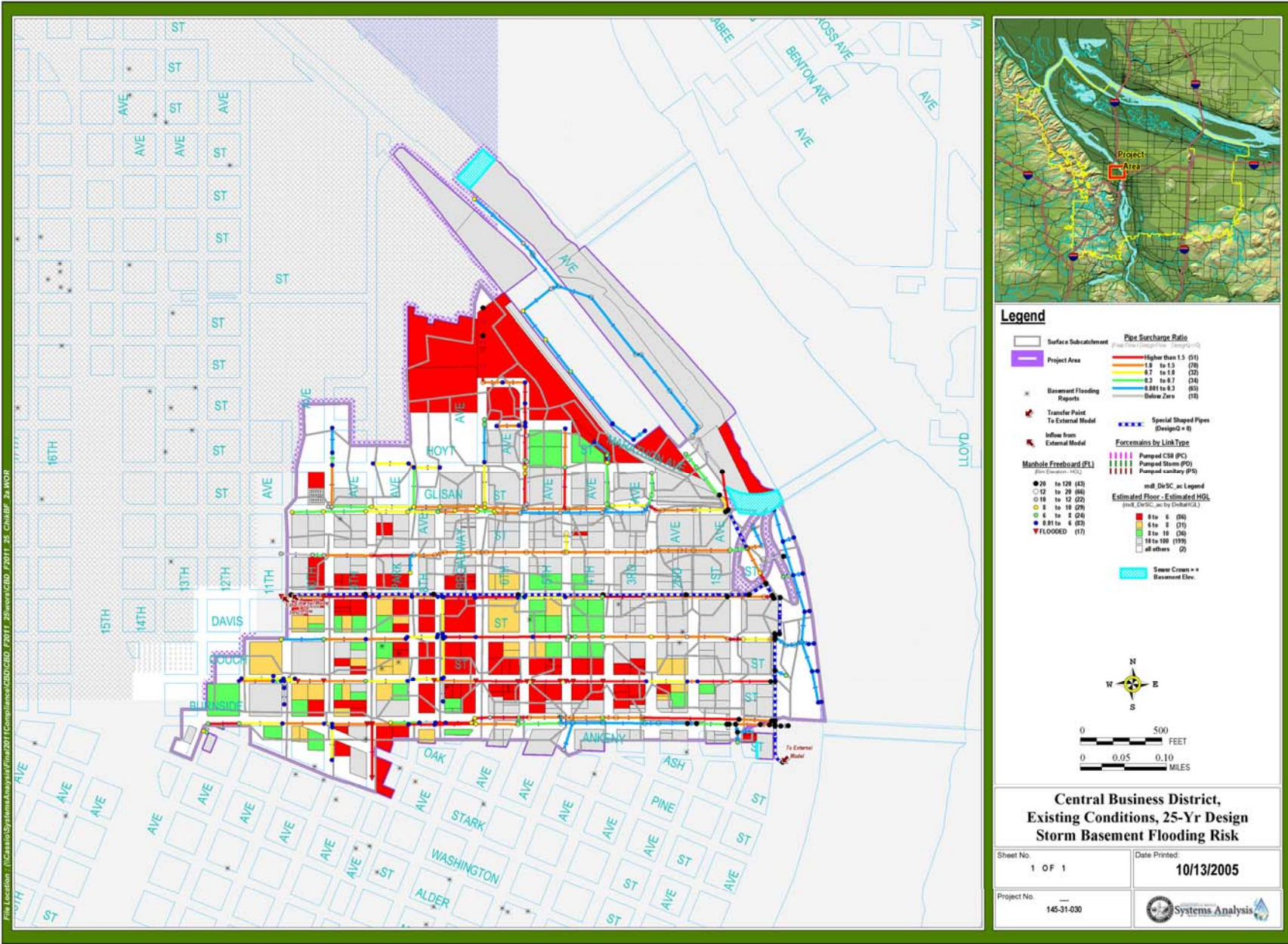
# Lents 2 Basement Flooding Risk



### Lents 2 Relative Total Suspended Solids(TSS) Loading

Sheet No.	1 OF 1	Date Printed	10/13/2005
Project No.	8065 145-31-130		

Lents 2 Estimated TSS Loading



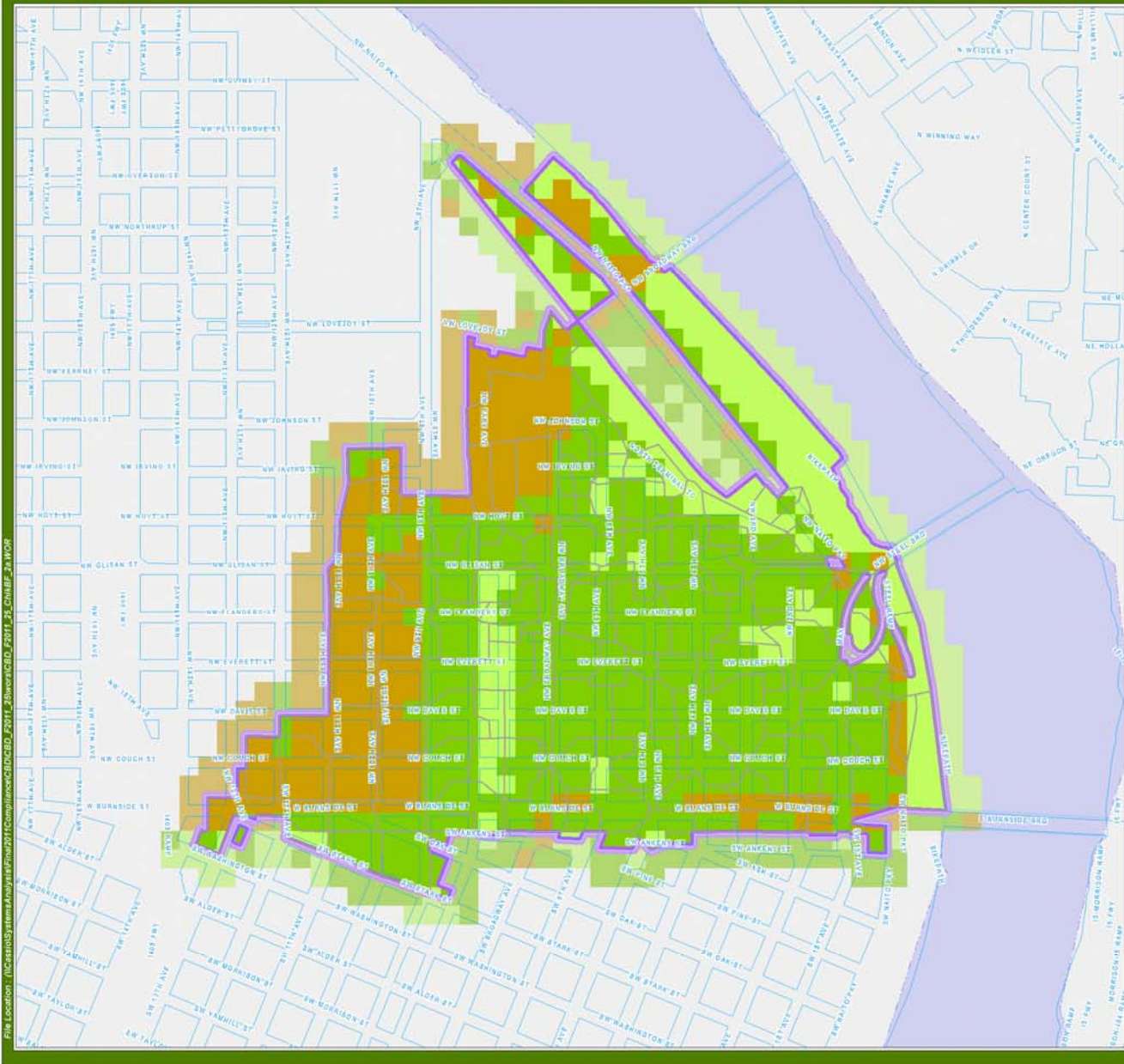
File Location: \\C:\GIS\GIS\SystemAnalysis\Yr14\2011\Compliance\CBD\CBD\_2011\_25\sewer\CBD\_2011\_25\_ChaSRP\_2a.WOR

# CBD Basement Flooding Risk

## Central Business District, Existing Conditions, 25-Yr Design Storm Basement Flooding Risk

Sheet No. 1 OF 1	Date Printed 10/13/2005
Project No. 145-31-030	

File Location: \\C:\casio\systems\analysis\Final\2011Compliance\CBD\CBD\_F011\_25\_Ch1BE\_2a.WOR



**Legend**

- Surface Subcatchments
  - CBD Project Area
  - Water Features
- Grid Loading Results**  
**Relative TSS Loading (Pounds)**
- LOW (-0.001 to 97) (275)
  - MEDIUM (97 to 186) (552)
  - HIGH (186 to 278) (281)

*Note:*  
 Grid results from citywide watershed model runs dated 06/07/05; (CITYWIDE\_GridData\_20050607.mdb)



**Central Business District  
 Total Suspended Solids  
 (TSS) Loading**

Sheet No:  
 1 OF 1

Date Printed:  
 10/13/2005

Project No:  
 8065  
 145-31-130



Central Business District Estimated TSS Loading