

US EPA ARCHIVE DOCUMENT

Archiving STAR Scientific Data

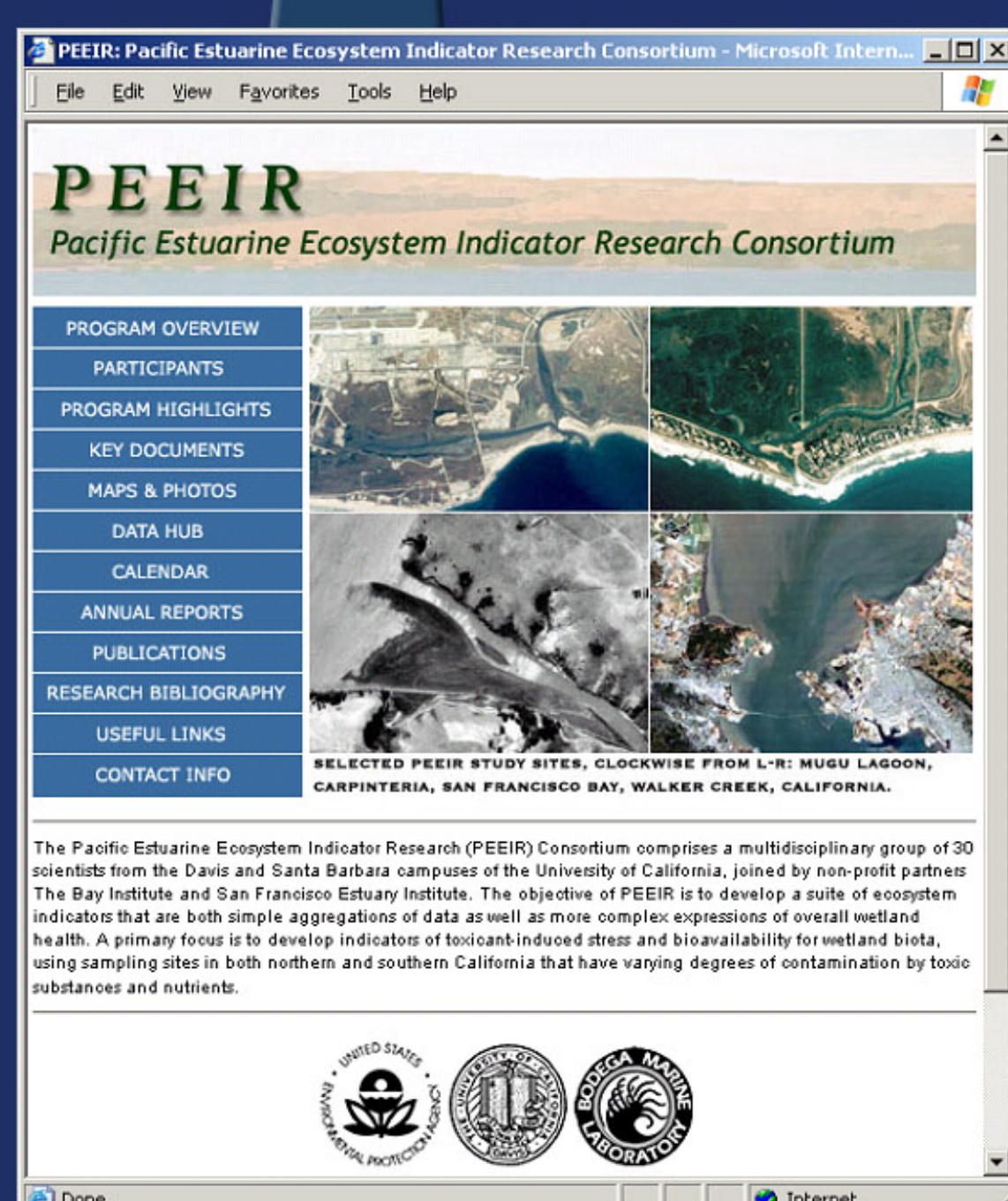
EPA Science Forum

Healthy Communities and Ecosystems

Estuaries and Great Lakes (EaGLE) Data Archival in the Environment Information Management System (EIMS)

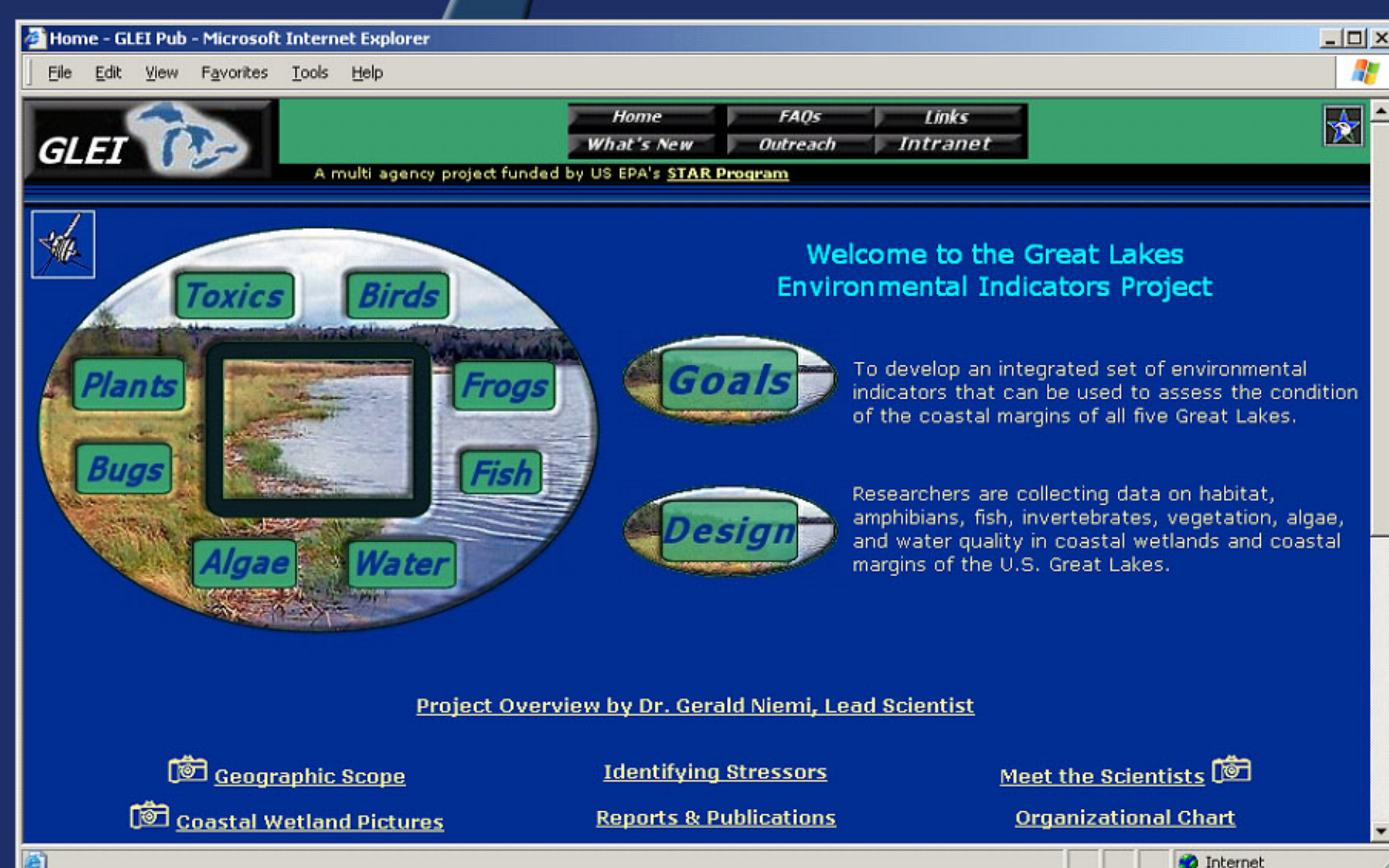
EIMS is partnering with the National Center for Environmental Research Science To Achieve Results (STAR) grant program to archive and provide access to the scientific data generated by the five STAR research centers comprising the EaGLE Program. Collectively, these five centers have hundreds of researchers generating environmental data that need to be archived in the most useful format possible.

PEEIR



<http://www.bml.ucdavis.edu/peer>

GLEI



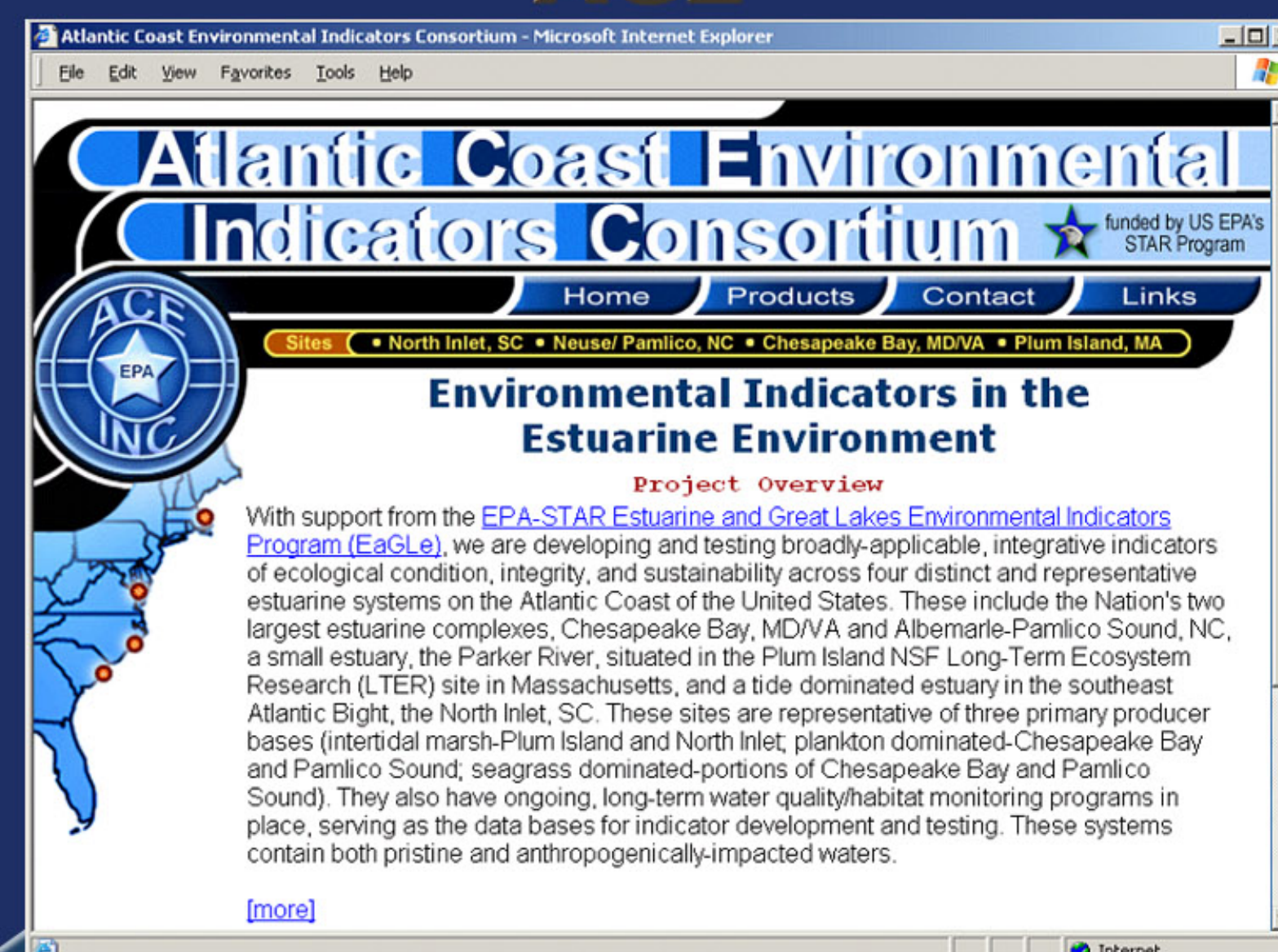
<http://glei.nrri.umn.edu/default>

ASC



<http://www.asc.psu.edu>

ACE



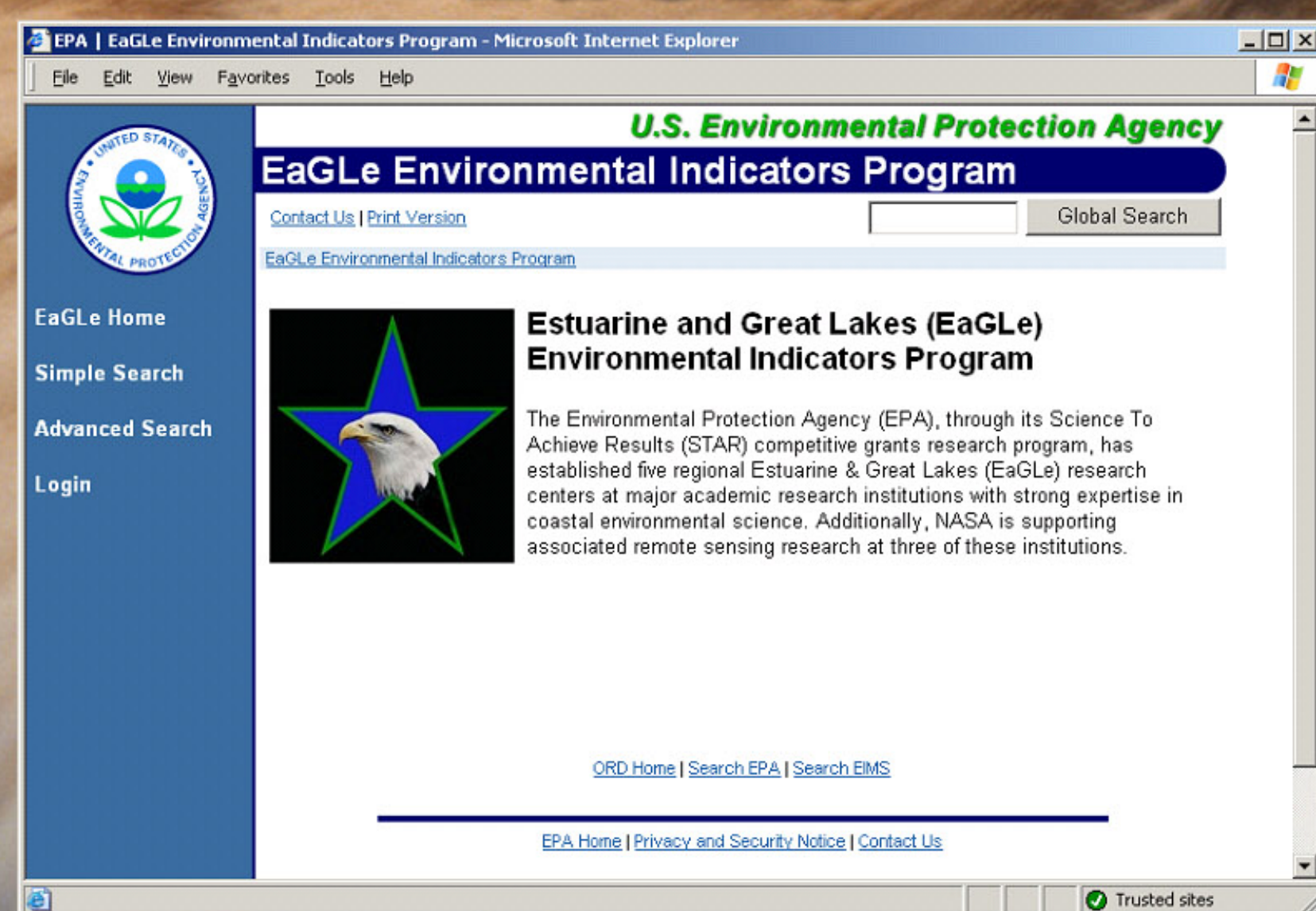
<http://www.aceinc.org>

CEER-GOM



<http://www.usm.edu/gcri/ceer>

EaGLE



<http://www.epa.gov/eagle>

The extensive metadata associated with each data set in the EIMS EaGLE prototype facilitates thorough searching of the EaGLE data by keyword, location, and other criteria, making data discovery easy yet robust.

Data set types include: standard spreadsheet-type flat files of water quality data, biological community data and bioinformatics data; GIS coverages; and remote-sensing imagery.

This prototype demonstrates a successful means to publicly archive scientific data produced from STAR grant studies.

Delivering Science-Based Information to Decision Makers