

US EPA ARCHIVE DOCUMENT

Use of California Environmental Health Tracking Data to Investigate Environmental Health Disparities

English PB; Roberts E; Wong M; King G; Wolff C; Ruiz D; Rudolph L

Division of Environmental and Occupational Disease Control



Funding provided by the CDC
Environmental Health Tracking Program

Environmental Health Disparities in California

- Disparities in Environmental Exposures/Hazards (e.g. traffic, pesticides, air pollution) documented by race/ethnicity, income
- Health and Environmental Surveillance can play a key role in identifying localized impacts: but only if neighborhood-level data exist.

Barriers to Local Data

- Small number of health events (e.g. cancer)
- Unstable rates
- Confidentiality Restrictions

Solutions

- Movement towards providing web-based mapping services publically available to display local rates of disease and local environmental data
- Examples:
 - Adverse Reproductive Outcomes
 - Asthma
 - Traffic and Pesticides

www.catracking.com

EHIB California Environmental Health Tracking Program

[Sign-In](#) View: [Intranet](#) | [Internet](#)

[Home](#) | [Data and Information](#) | [Tools and Services](#) | [Background Concepts](#) | [Resources](#) | [About CEHTP](#) | [Glossary](#)

Home

Last Edited: 11/25/08 [Open, edits](#)

CALIFORNIA ENVIRONMENTAL HEALTH TRACKING PROGRAM

The California Environmental Health Tracking Program: Improving Public Health With Better Information

TEXT AND DATA ARE PRELIMINARY. FOR REVIEWERS ONLY. PLEASE DO NOT CIRCULATE.

The California Environmental Health Tracking Program (CEHTP) is working to improve public health by delivering science-based information on the trends and distributions of diseases, environmental threats, and the often complex relationship between them.

CONTACT US

California Environmental
Health Tracking Program

850 Marina Bay Pkwy, P-3
Richmond, CA 94804

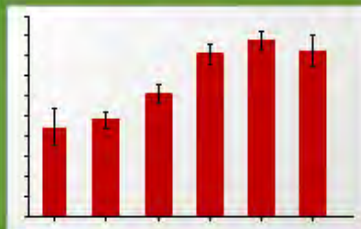
(510) 620-3038

[E-Mail Us](#)



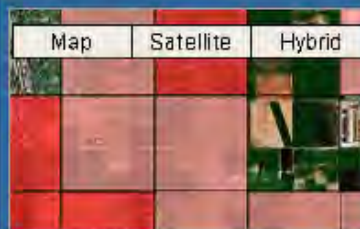
*****DRAFT*** PLEASE DO
NOT CIRCULATE**

DATA AND INFORMATION



Find data and information
about health, the environment,
and other special topics.
Create your own tables, charts,
and maps.

TOOLS AND SERVICES

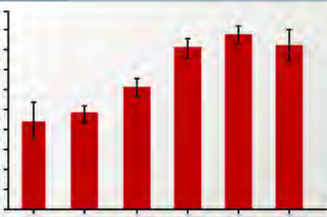


Explore web tools designed to
help researchers, practitioners,
and the public in using data.
Topics include pesticide use,
traffic, and more.

BACKGROUND CONCEPTS



Want information about how to
use and understand the data?
Review concepts in Tracking,
statistics, environmental
health, and more.



DATA & INFORMATION

- How Do I Find Data Here?
- Where are the Data From?
- How Can I Request Data?

RELATED PAGES

- Tools & Services
- Background Concepts

CONTACT US

California Environmental
Health Tracking Program

850 Marina Bay Pkwy, P-3
Richmond, CA 94804

(510) 620-3038

Data and Information

Click on the links below to access data and information about a specific topic area.

CEHTP TOPIC AREAS

Health

Environmental Exposures

Environmental Hazards

Special Topics

Asthma

Cancer

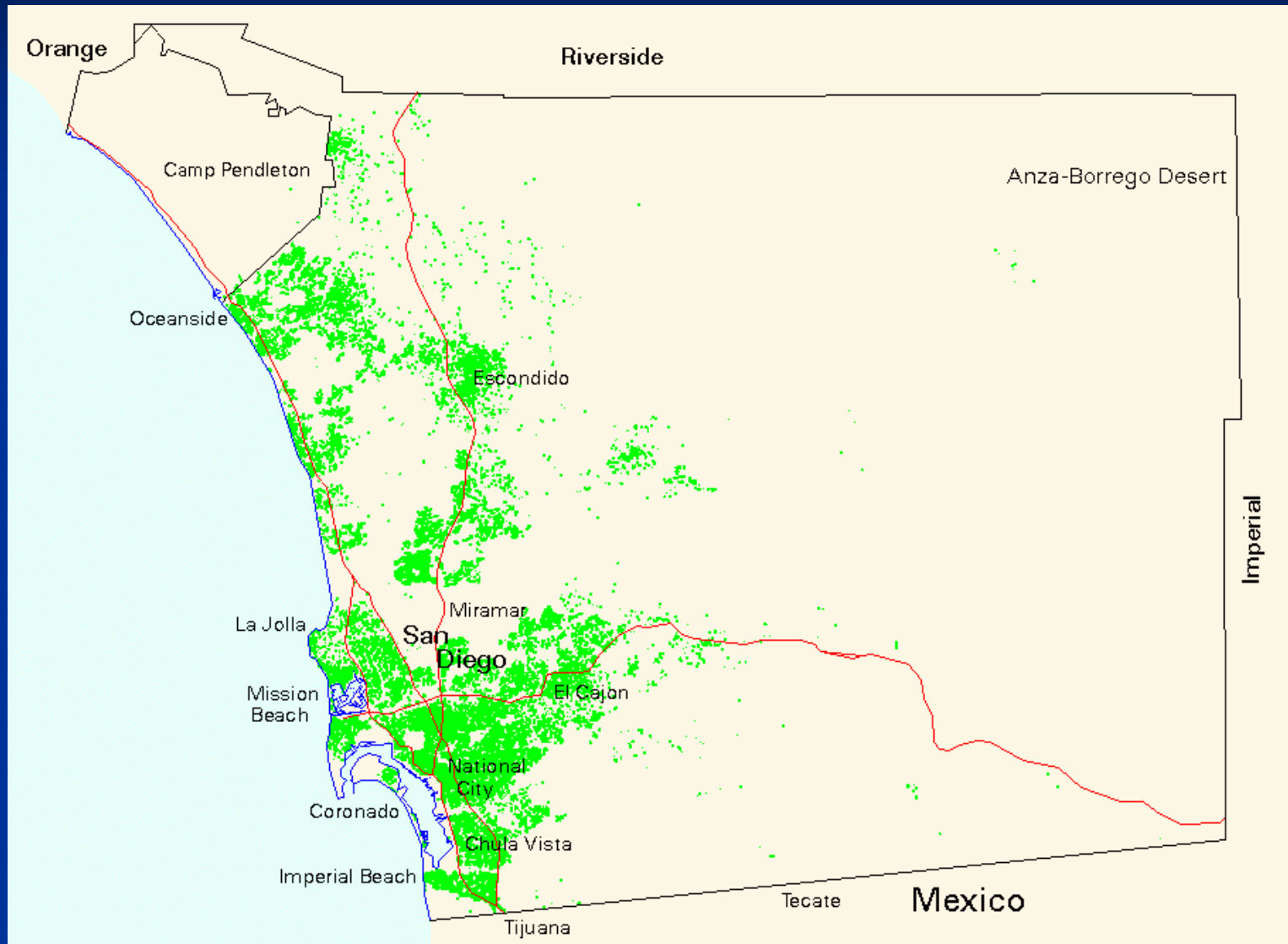
Heart Attacks

Maternal & Infant Health

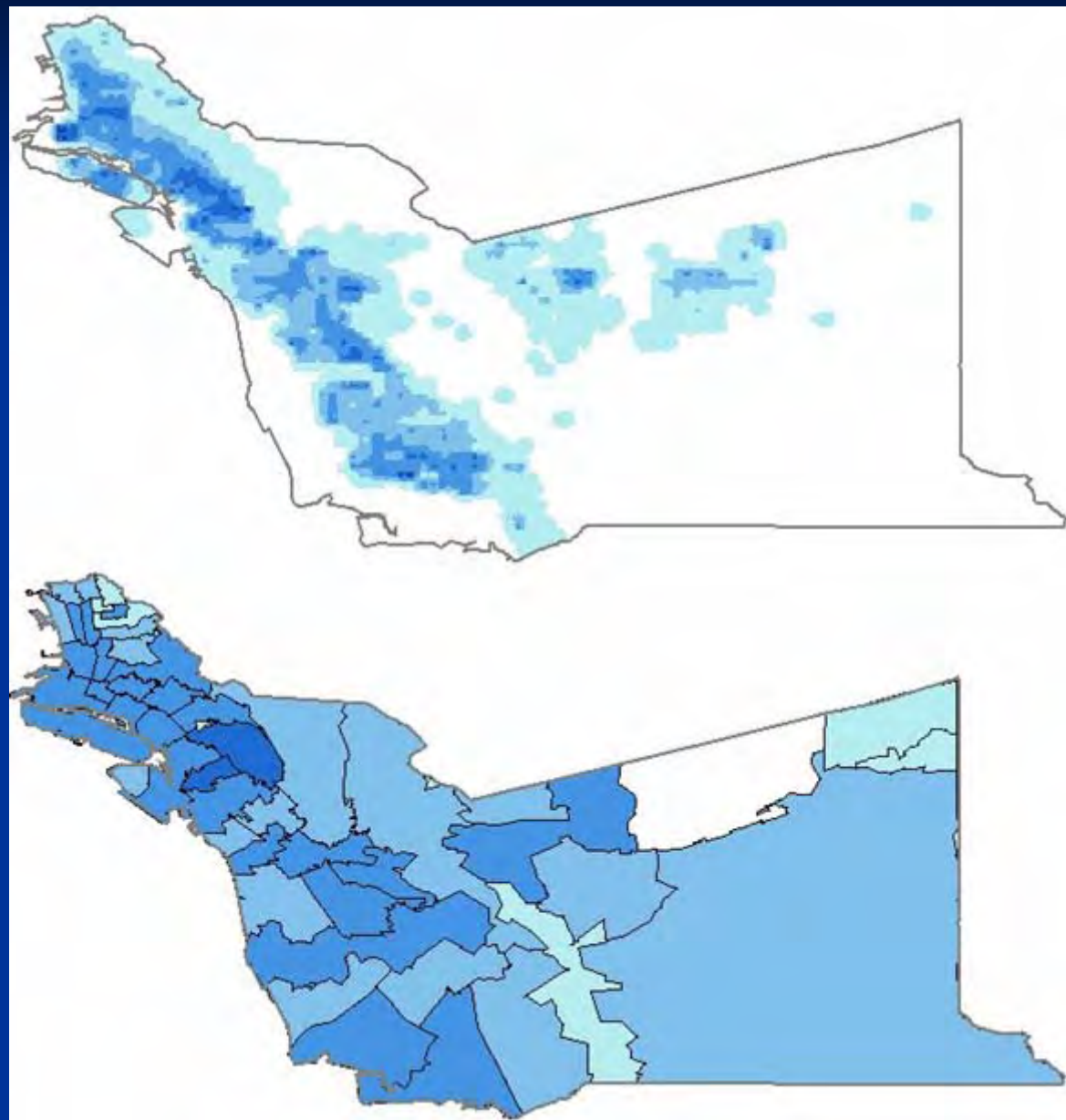
Learn more about the data and information CEHTP provides

- [How to find data and information on the CEHTP website](#)
- [Where does CEHTP get the data?](#)
- [Requesting data from CEHTP](#)

Mapping of Adverse Reproductive Outcomes, San Diego County – Temporal Patterns (1990 Births)



Pre-term birth rate,
Alameda County, 2001
(By density estimation
and by zip)



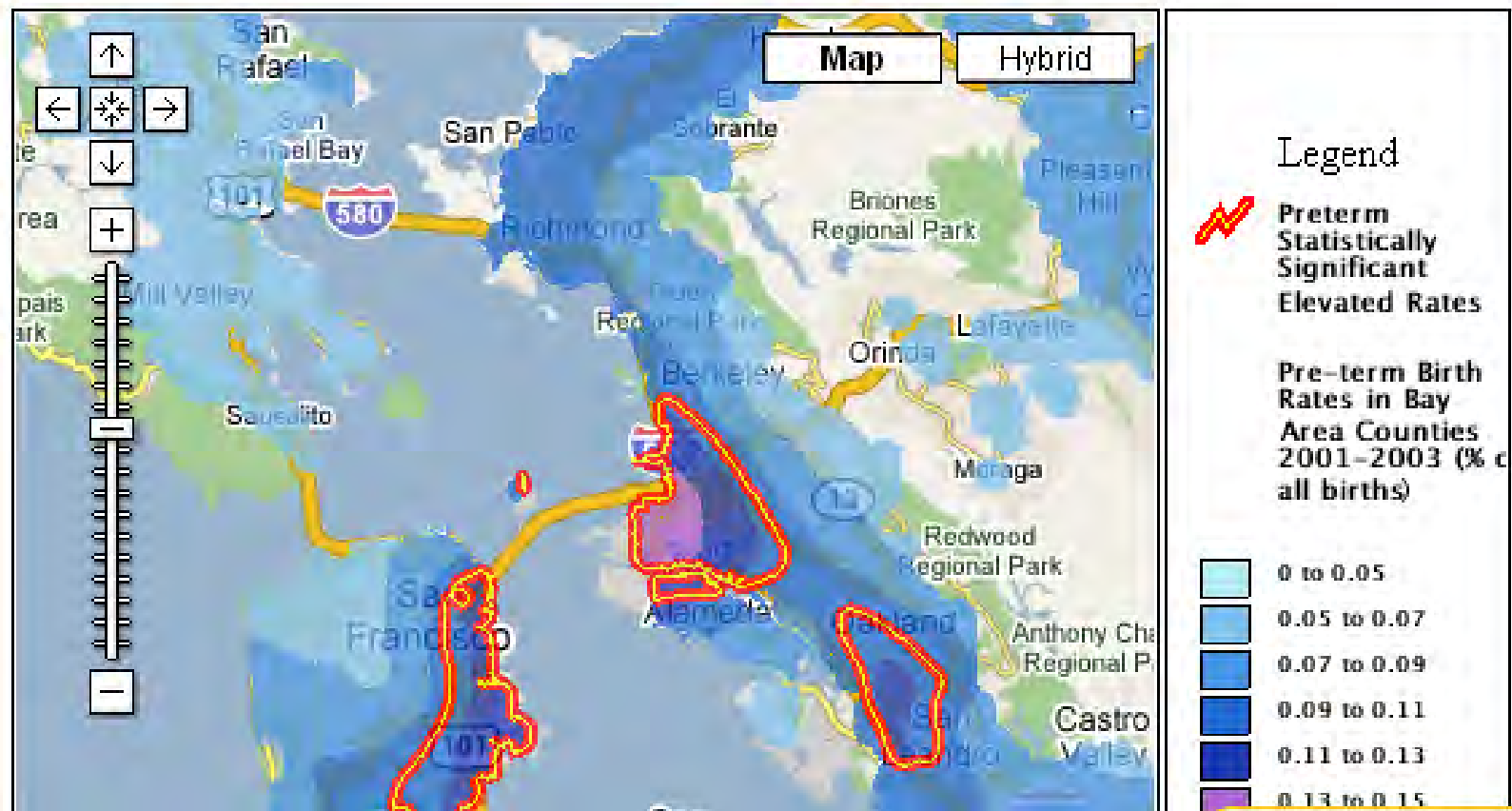
CEHTP Dynamic Map Service Integration Demo

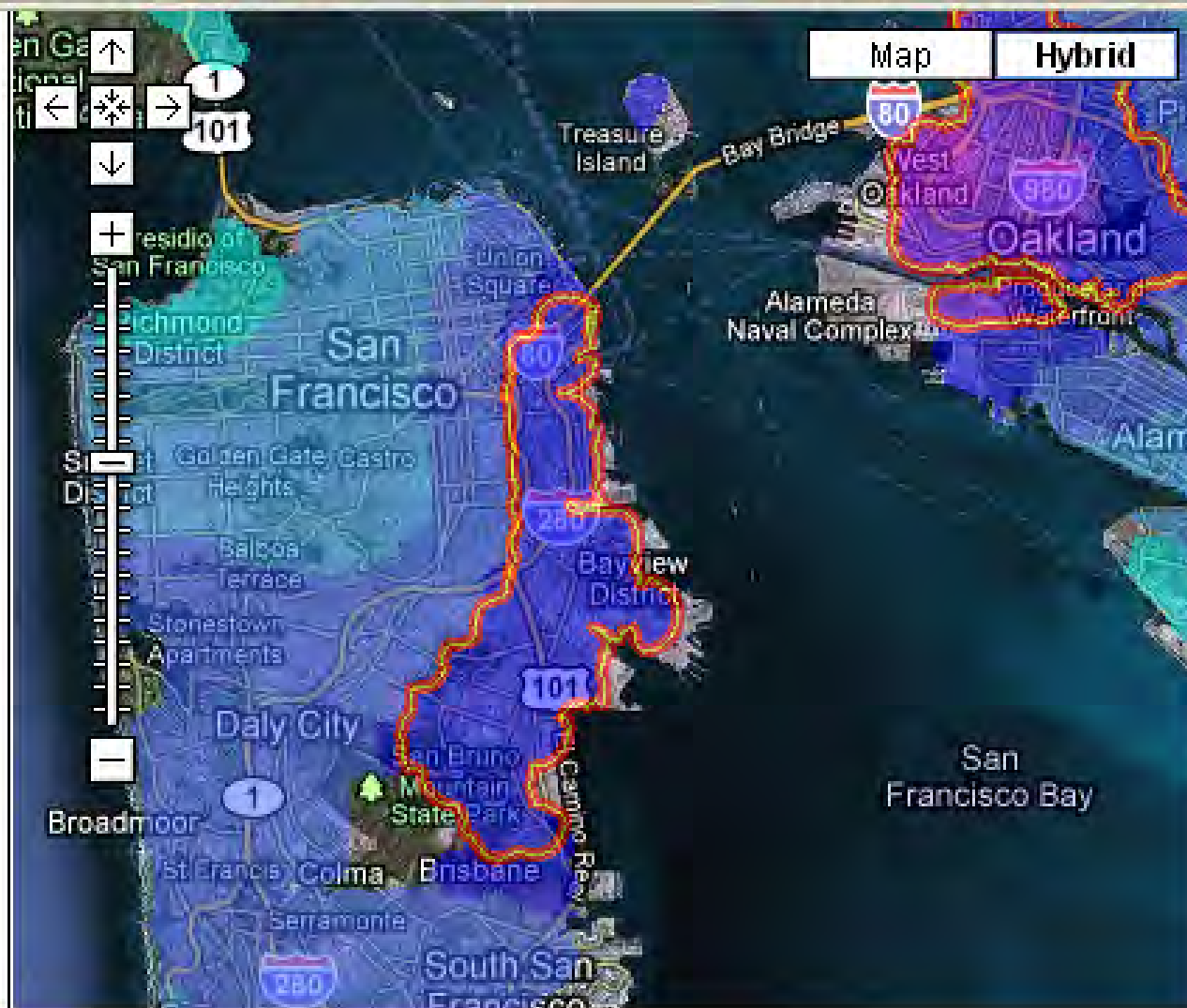
Background

Layer Options

View Map

Build Web Page





Layers

☐ Power Plants
CO2_2007

<10,000

10,000 - 1,000,000

>1,000,000

☒ Petroleum Refineries
CO2_2007

<10,000

10,000 - 1,000,000

>1,000,000

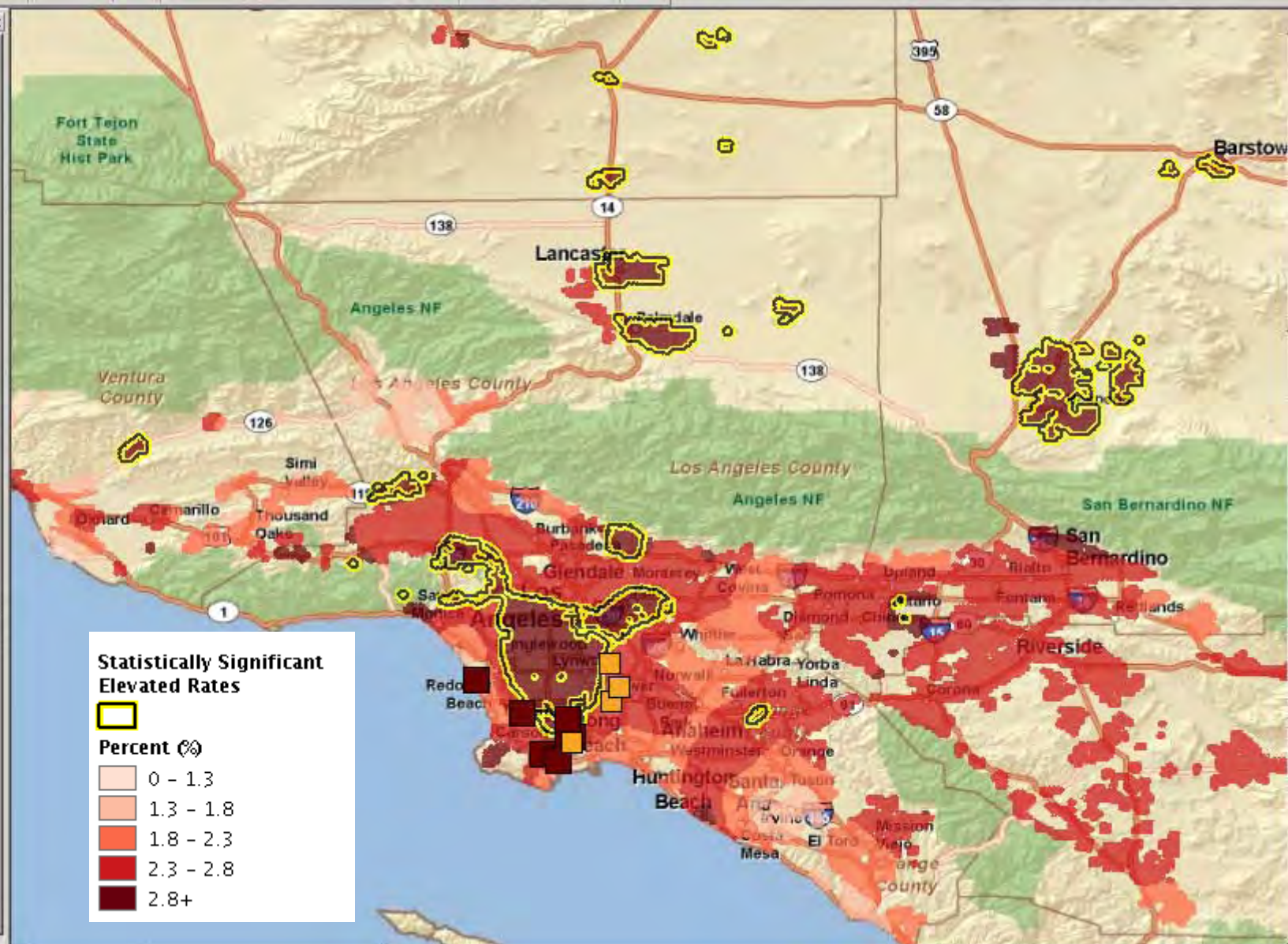
☐ Cement Plants
CO2_2007

<10,000

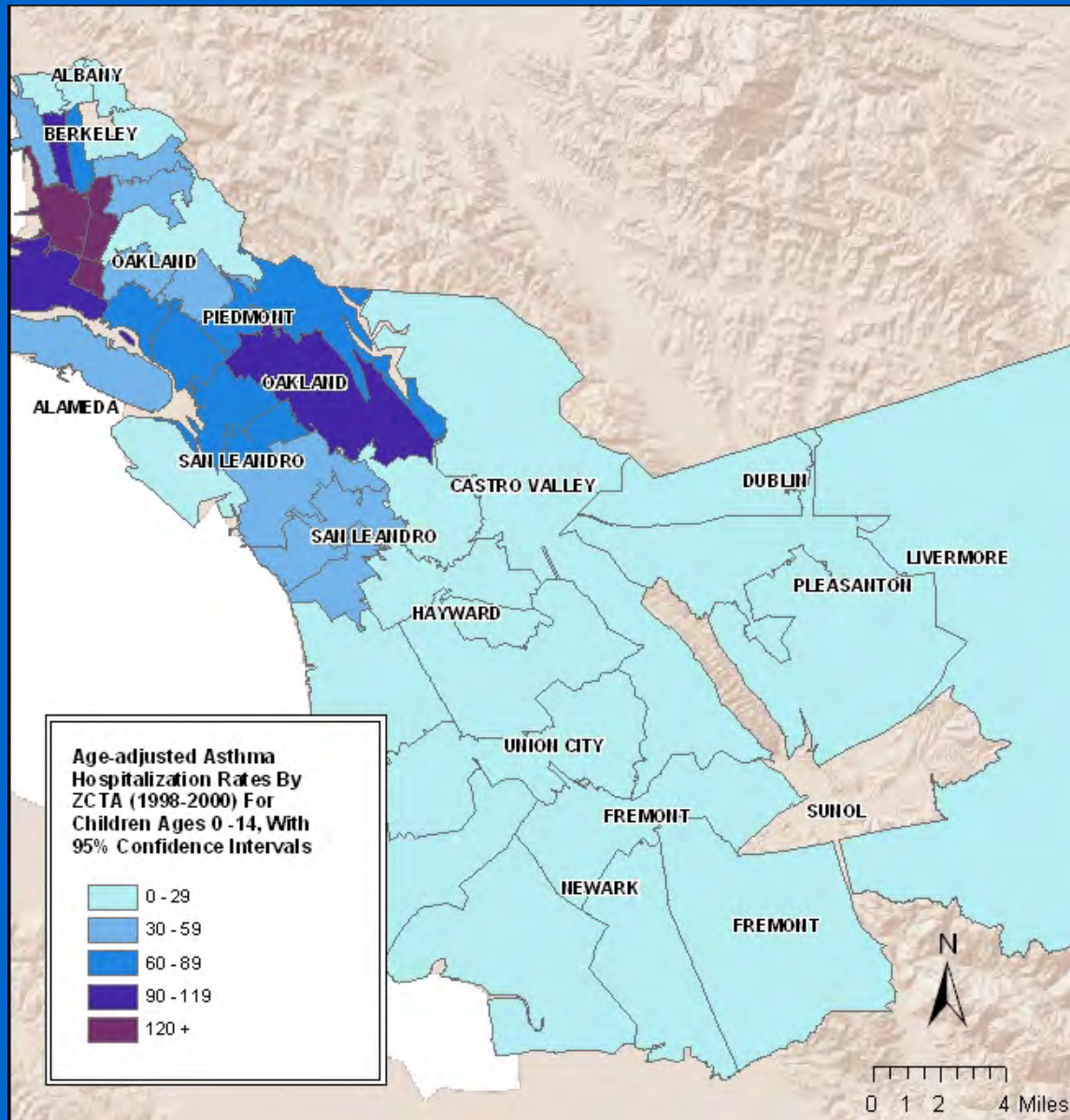
10,000 - 1,000,000

>1,000,000

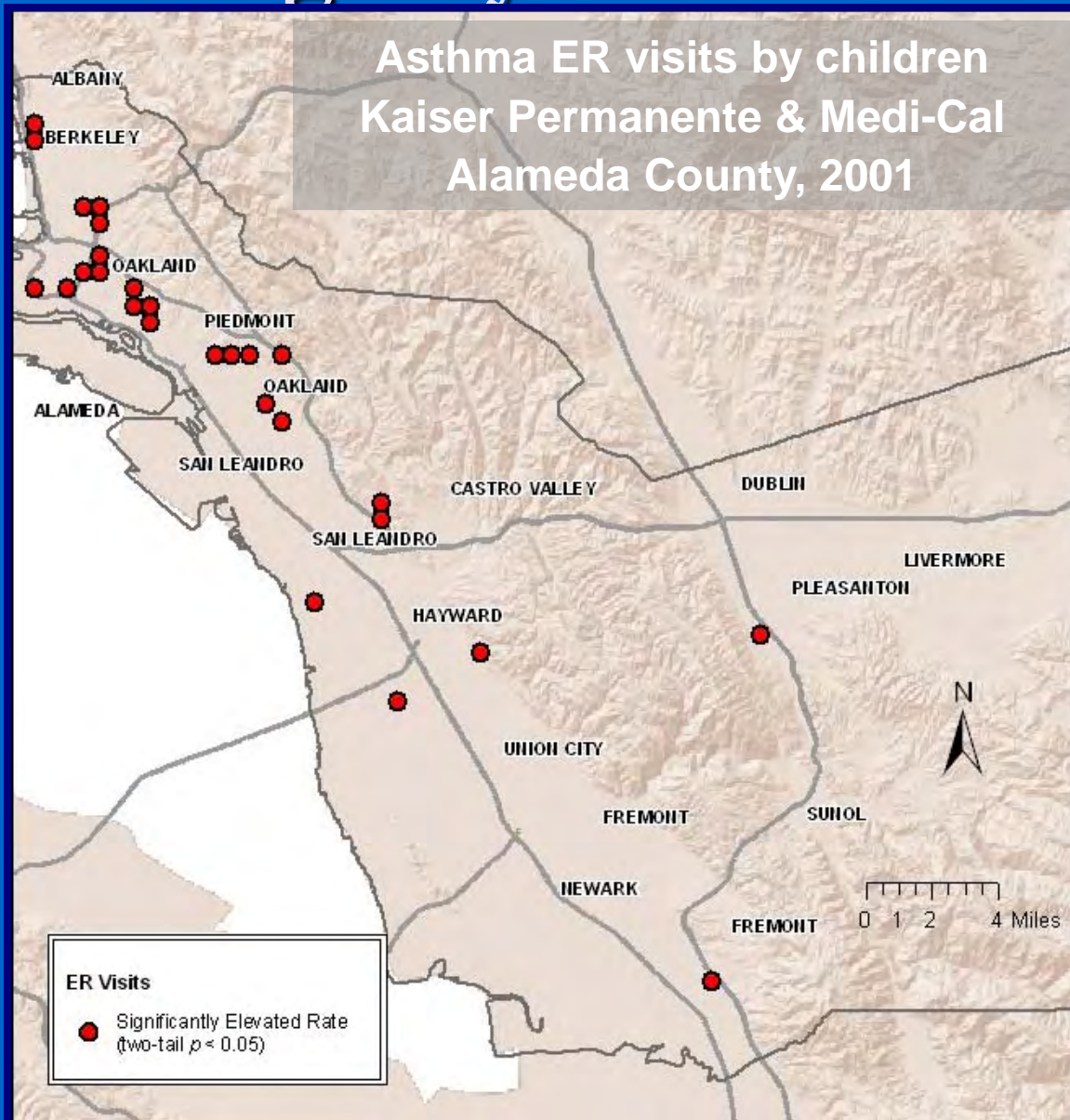
☒ Map_Services/TLBW0607
☐ ESRI_Imagery_World_2D
☒ ESRI_StreetMap_World_2D



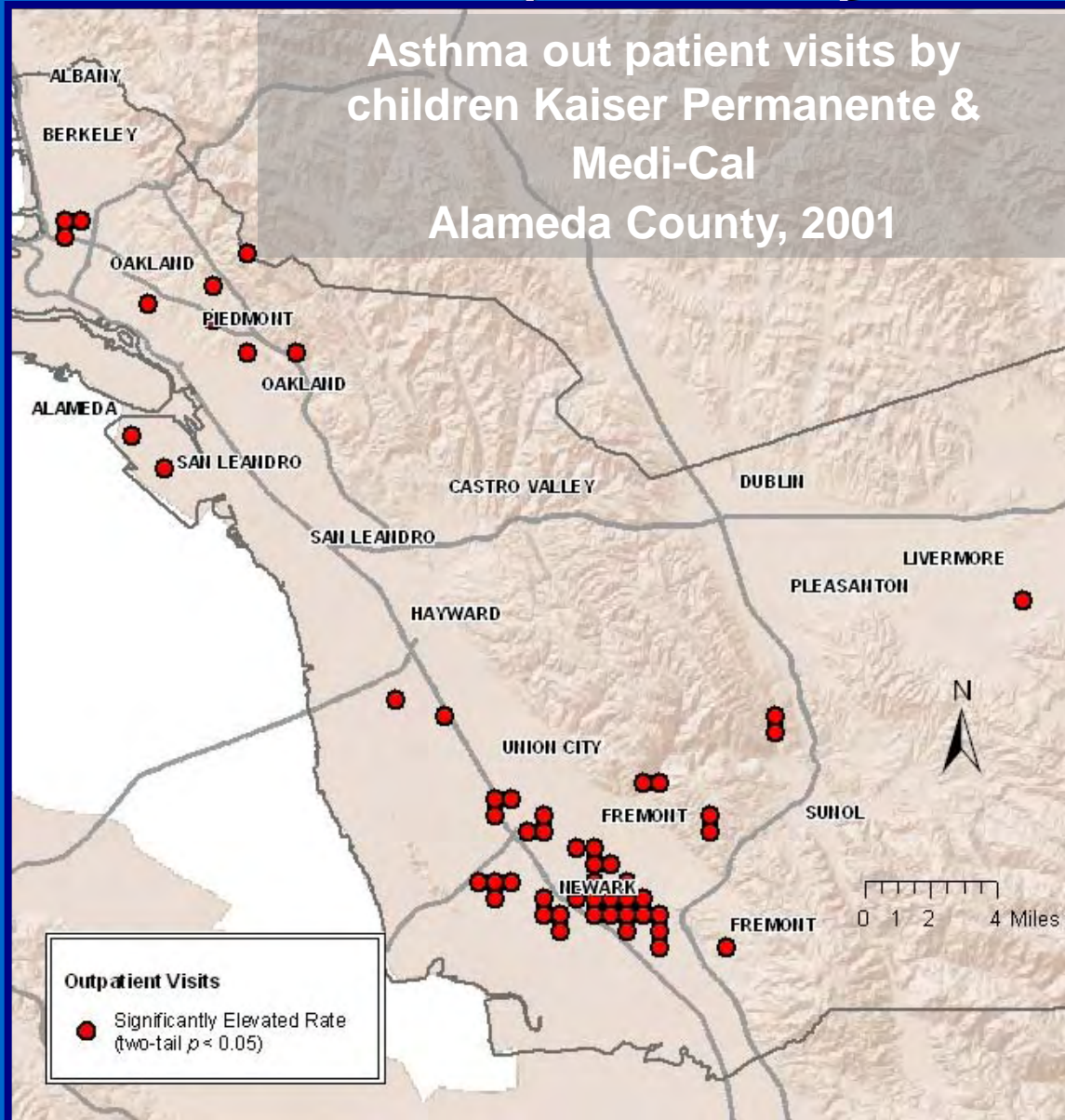
Hospitalization: Asthma As We Knew It



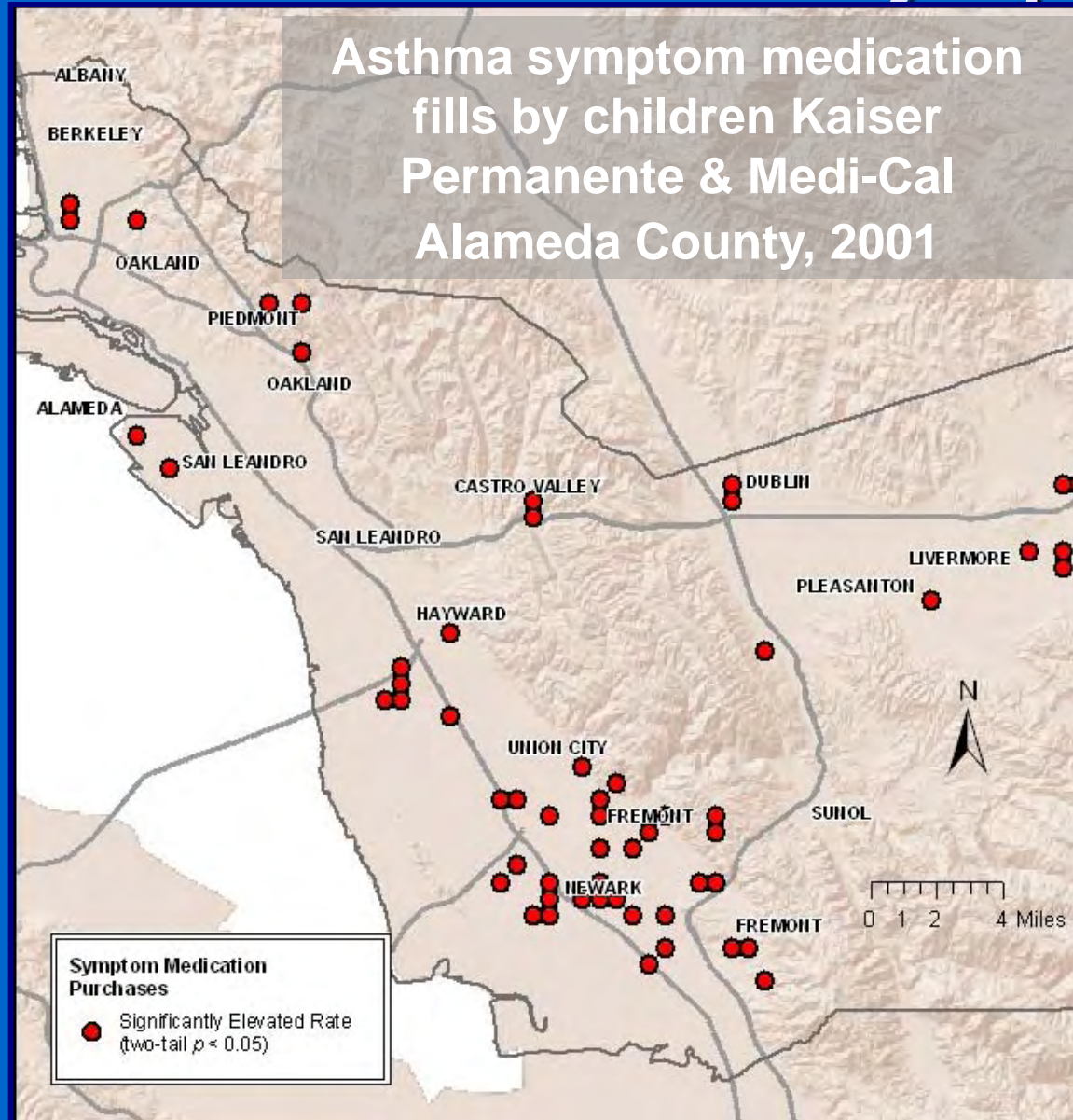
Emergency Room Visits



Out Patient (Doctor) Visits



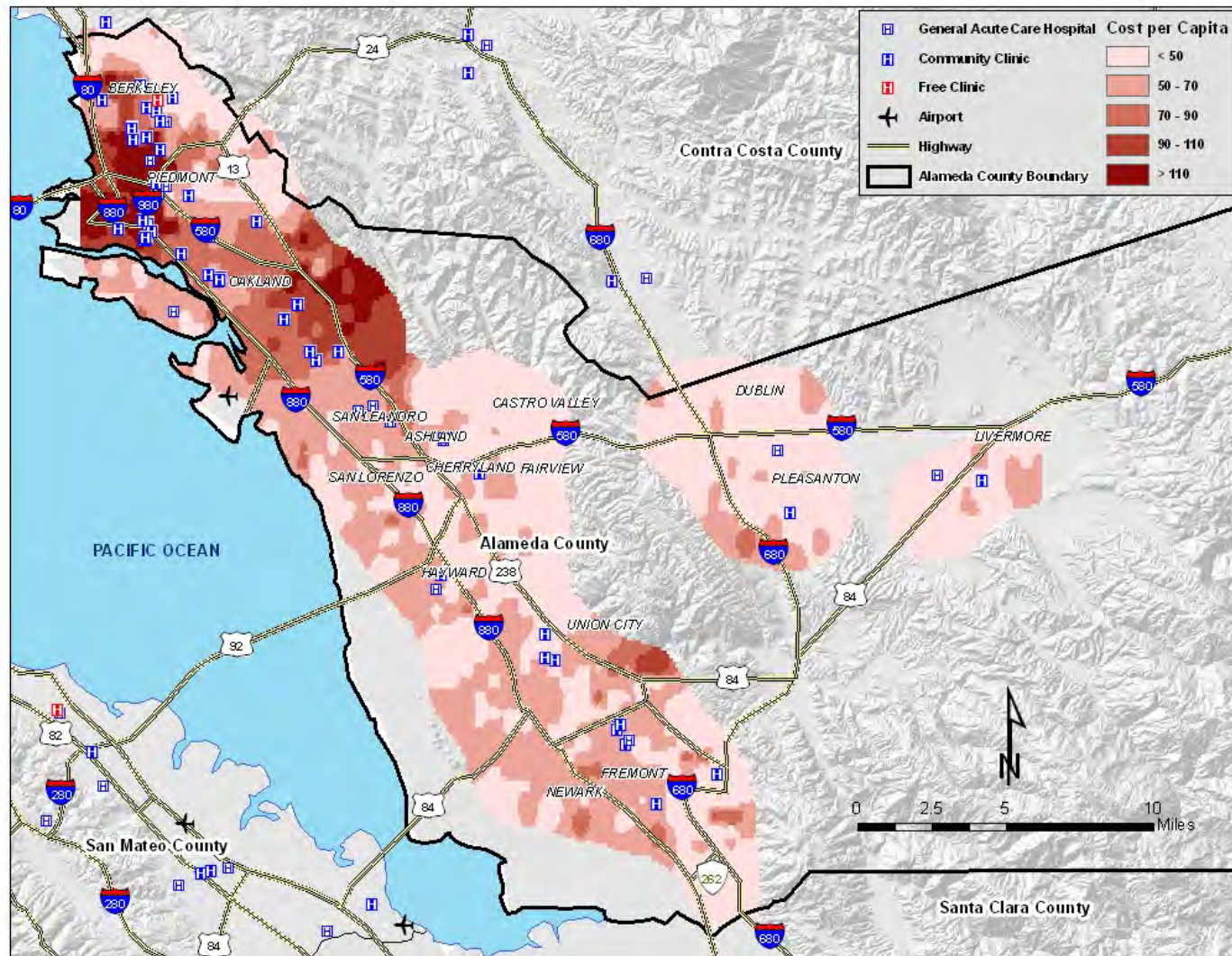
Medication for Asthma Symptoms



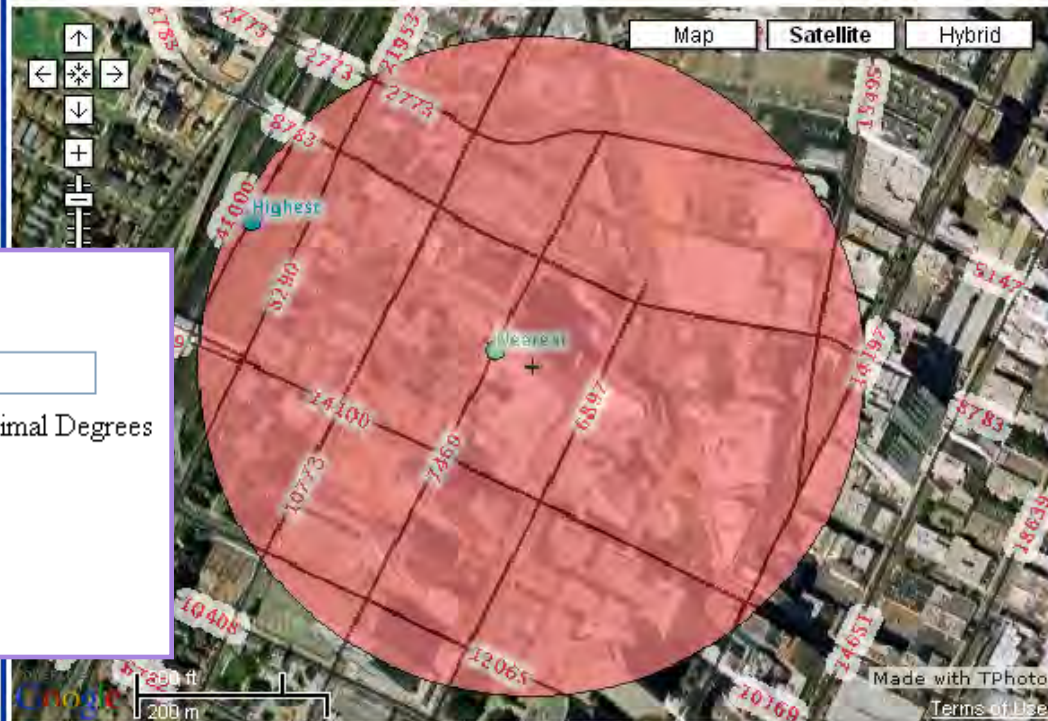
Asthma Inequalities (Rates per 1,000)

Poverty rate in census tract:	Low poverty (< 20%)	High poverty (\geq 20%)
ER visits	7.0 (6.4 – 7.6)	11.6 (9.9 – 13.2)
Outpatient visits	155 (151 – 159)	141 (132 – 150)
Symptom med fills	264 (258 – 270)	215 (203 – 226)
Maintenance med fills	158 (153 – 162)	94 (87 – 101)

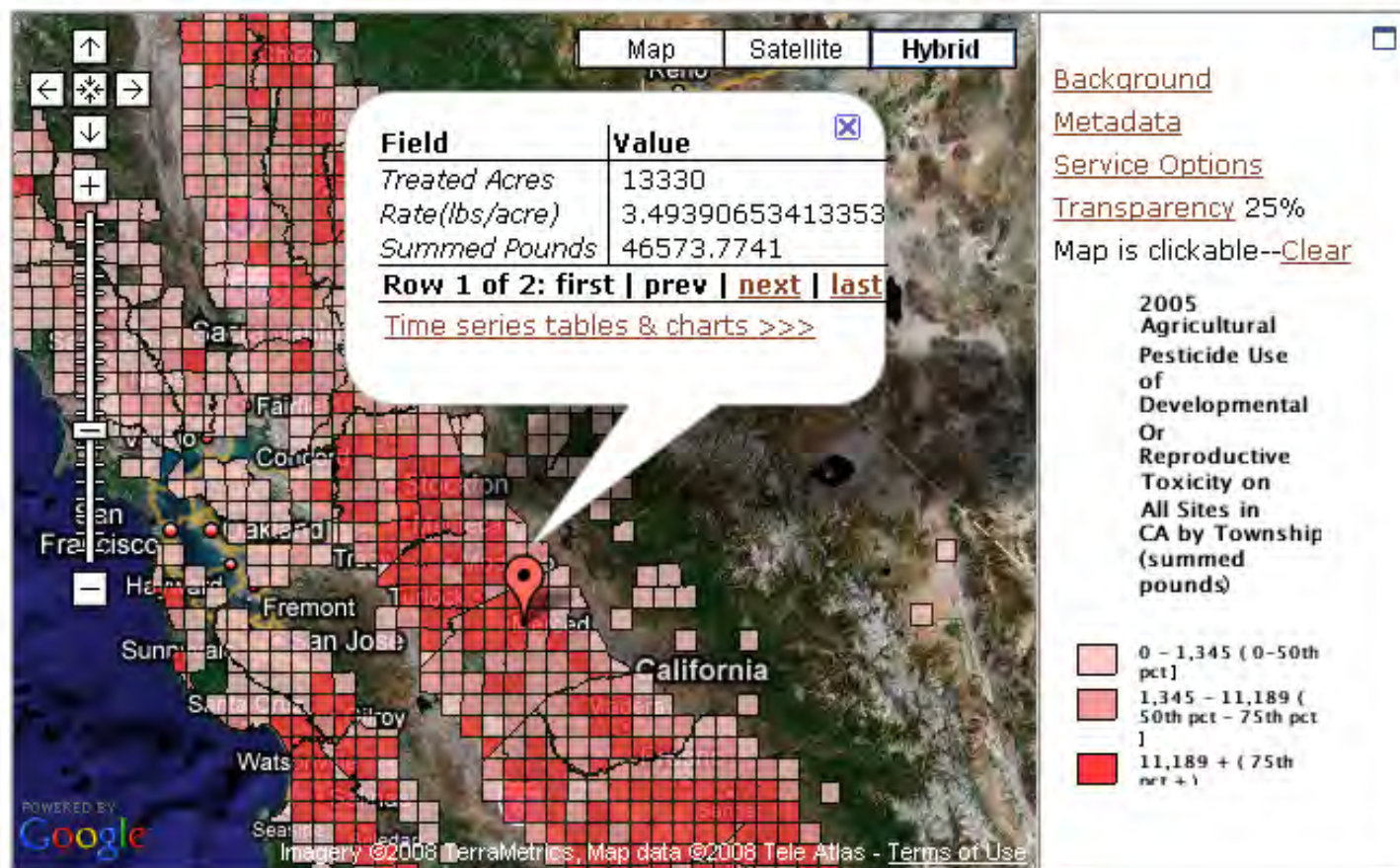
The Social Cost of Inequality

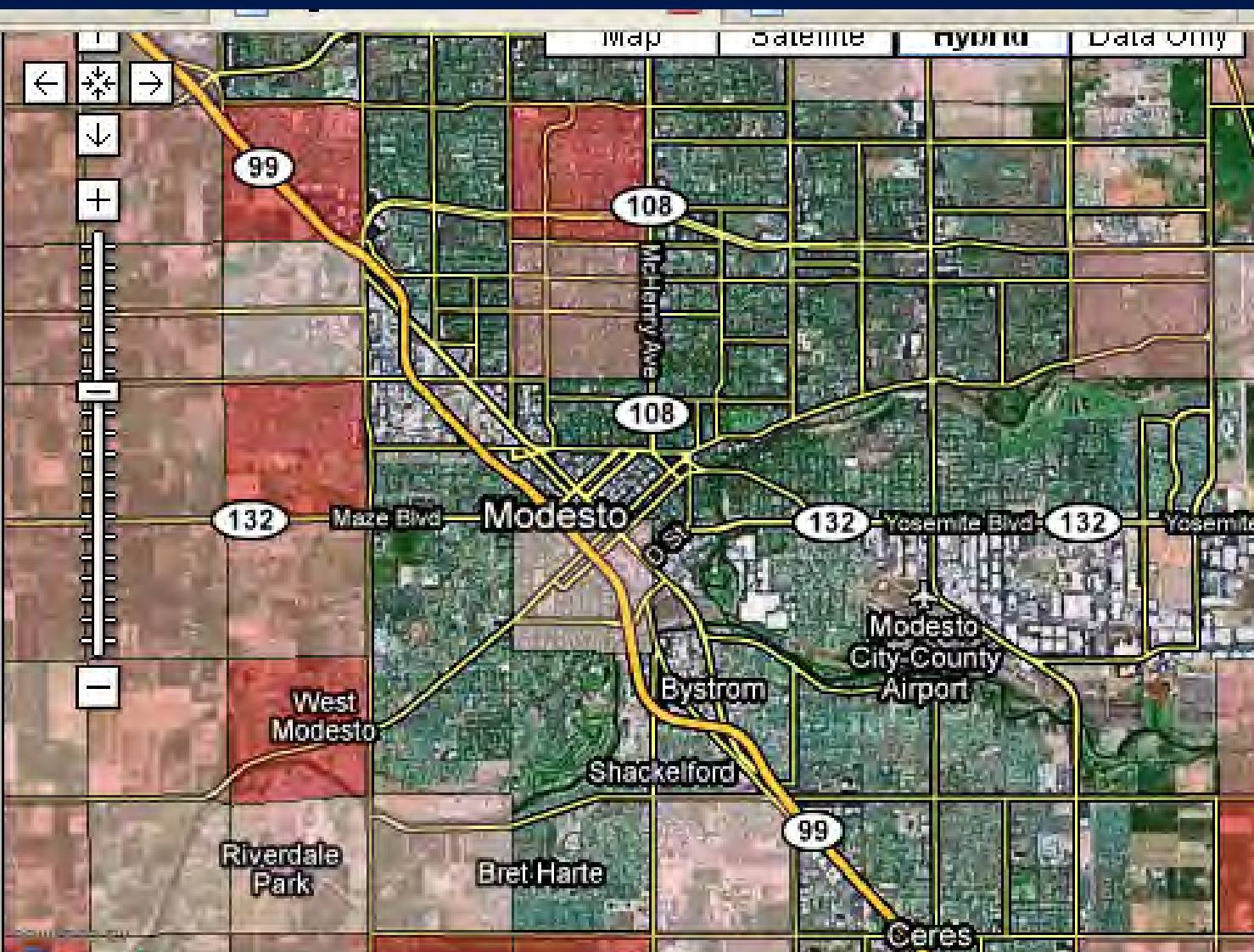


counts



Agricultural Pesticide Web Mapping Service (WMS)





[Background](#)

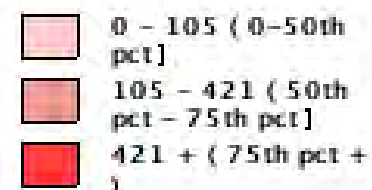
[Metadata](#)

[Service Options](#)

[Transparency](#) 50%

Map is clickable

2008
Agricultural
Pesticide Use
of
Developmental
Or Reproductive
Toxicity on All
Sites in CA by
Section (summe
pounds)



■ In order for this information to be used by communities, data must be:

- Accessible
- Usuable
- Understandable