

US EPA ARCHIVE DOCUMENT



2008 Conservation and Native Landscaping Awards

Why Native Landscaping?

- Reduces/Prevents Pollution
- Conserves Natural Resources
- Provides Habitat and Enhances Ecological Function



Why Conservation Development?

- Reduces Storm Water Impacts
 - Less Impervious Surfaces
 - More Infiltration
 - More Open Space
- Provides Habitat



2008 Conservation and Native Landscaping Awards

Sites Nominated

- **Exhibits and Visitor Centers**
- **Parks/Prairies/Woodlands**
- **Naturalized Stormwater/Flood Control Basins**
- **Sustainable Stormwater Management Systems**
- **Wetland /Stream Corridor Restorations**

Exhibits and Visitor Centers



Lake County Forest Preserves, Ryerson Woods Welcome Center



Ryerson Woods Welcome Center



Museum of Science and Industry

Native landscaping at the Smart Home: Green + Wired Exhibit



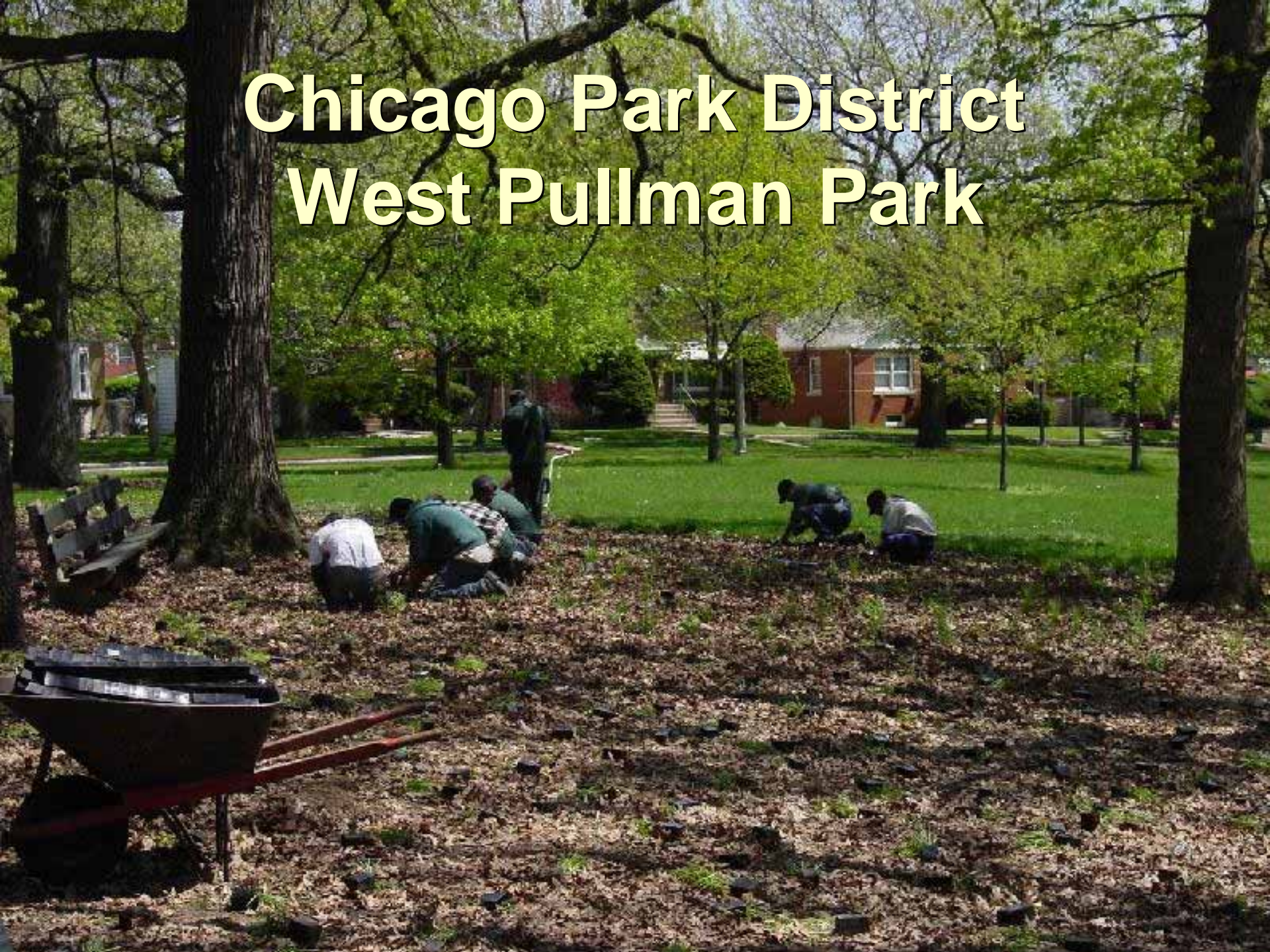
Museum of Science and Industry

Native landscaping at the Smart Home: Green + Wired Exhibit



Parks/Prairies/Woodlands

Chicago Park District West Pullman Park



Chicago Park District West Pullman Park



Nicor - Elgin Prairie



Nicor - Elgin Prairie



Keson Industries



Keson Industries



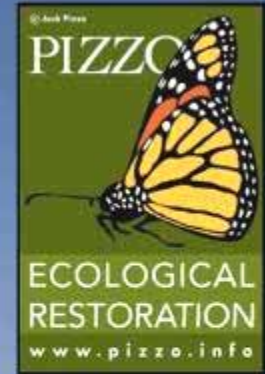
Ball Horticultural Corporate Campus



Ball Horticultural Corporate Campus



Village of Sandwich Harvey Creek Conservation Area





Harvey Creek Conservation Area



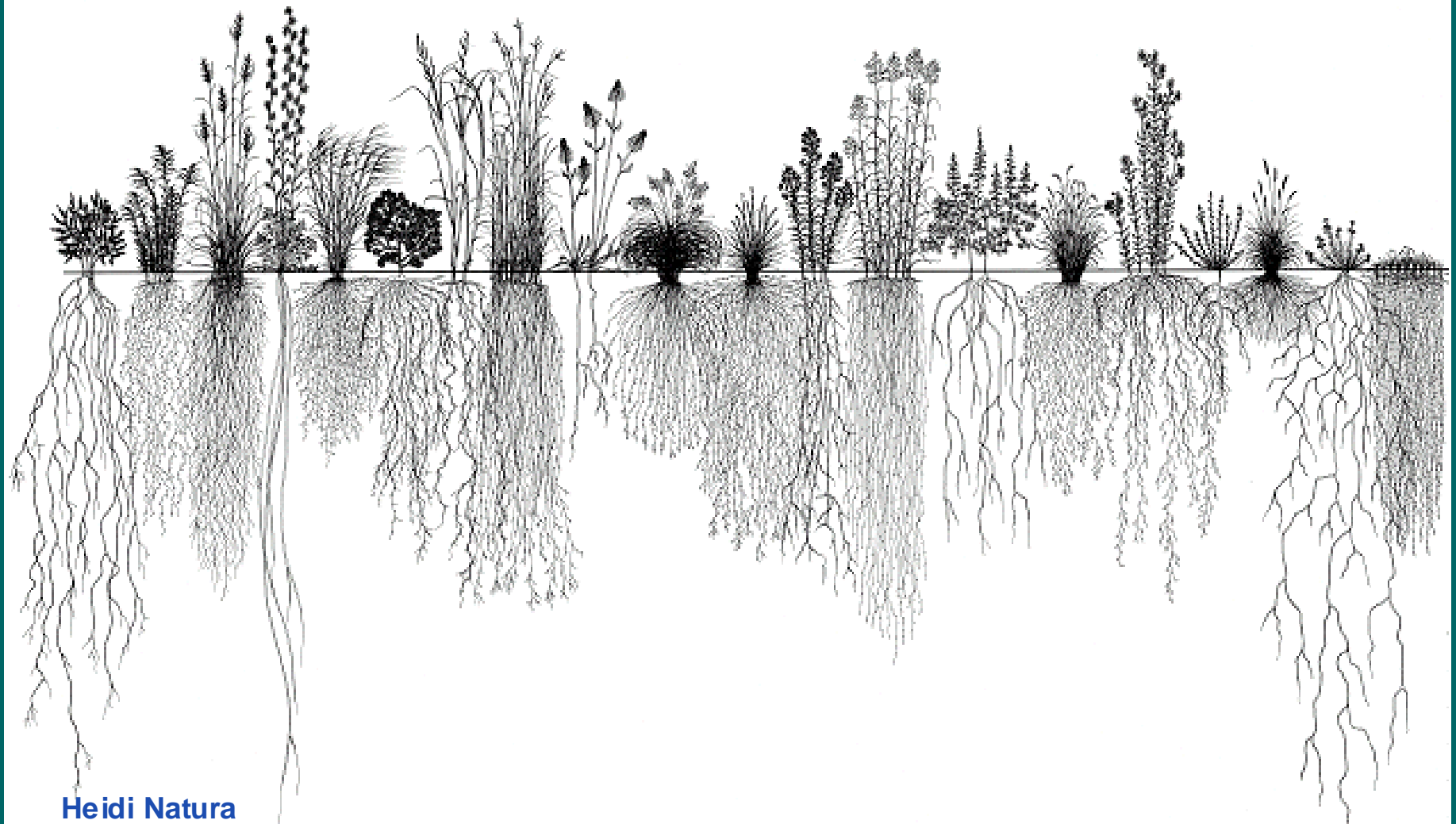


Town of Linn Nature Park

Town of Linn Nature Park



Naturalized Detention



Heidi Natura

Danada Woods Townhome Assoc. Naperville, IL



Danada Woods

Naperville, IL

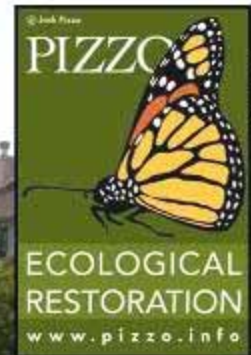


Highland Lakes Highland Park, IL



After Restoration – July 2008

Highland Lakes

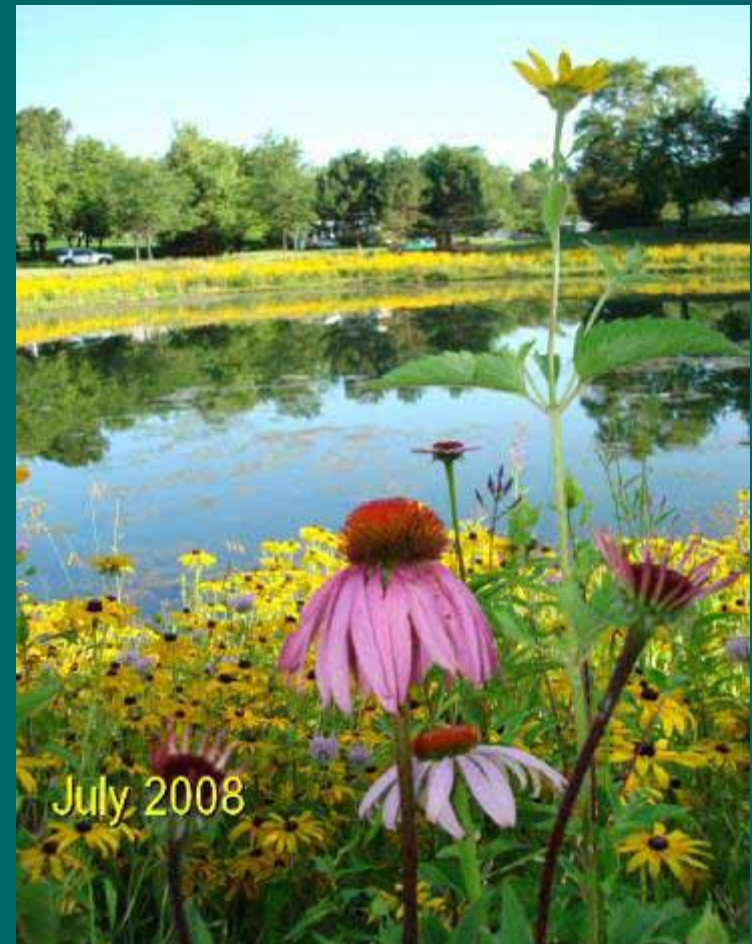


After Restoration – July 2008

Village of Algonquin

Lake Drive South

Naturalized Detention Basin



Village of Algonquin



Sept 2006



July 2008

**Lake Drive South
Naturalized Detention
Basin**

Nantucket Cove Schaumburg, IL



Nantucket Cove



Pheasant Run Naturalized Detention Basin Bradley, IL



Bradley, IL



Village of South Holland Veterans Memorial Park Naturalized Stormwater Basin



Village of South Holland Veterans Memorial Park Naturalized Stormwater Basin



Sanitary District of Michigan City, IN

Striebel Pond Flood Control Basin



Sanitary District of Michigan City, IN

Striebel Pond Flood Control Basin



Sustainable Stormwater Management





Centex Homes Crossings at Wolf Creek

Centex Homes Crossings at Wolf Creek Plainfield, IL



College of DuPage Roadway, Parking Lot and Associated Landscape Improvements



College of DuPage



Geneva School District

Geneva Middle School North



Geneva School District

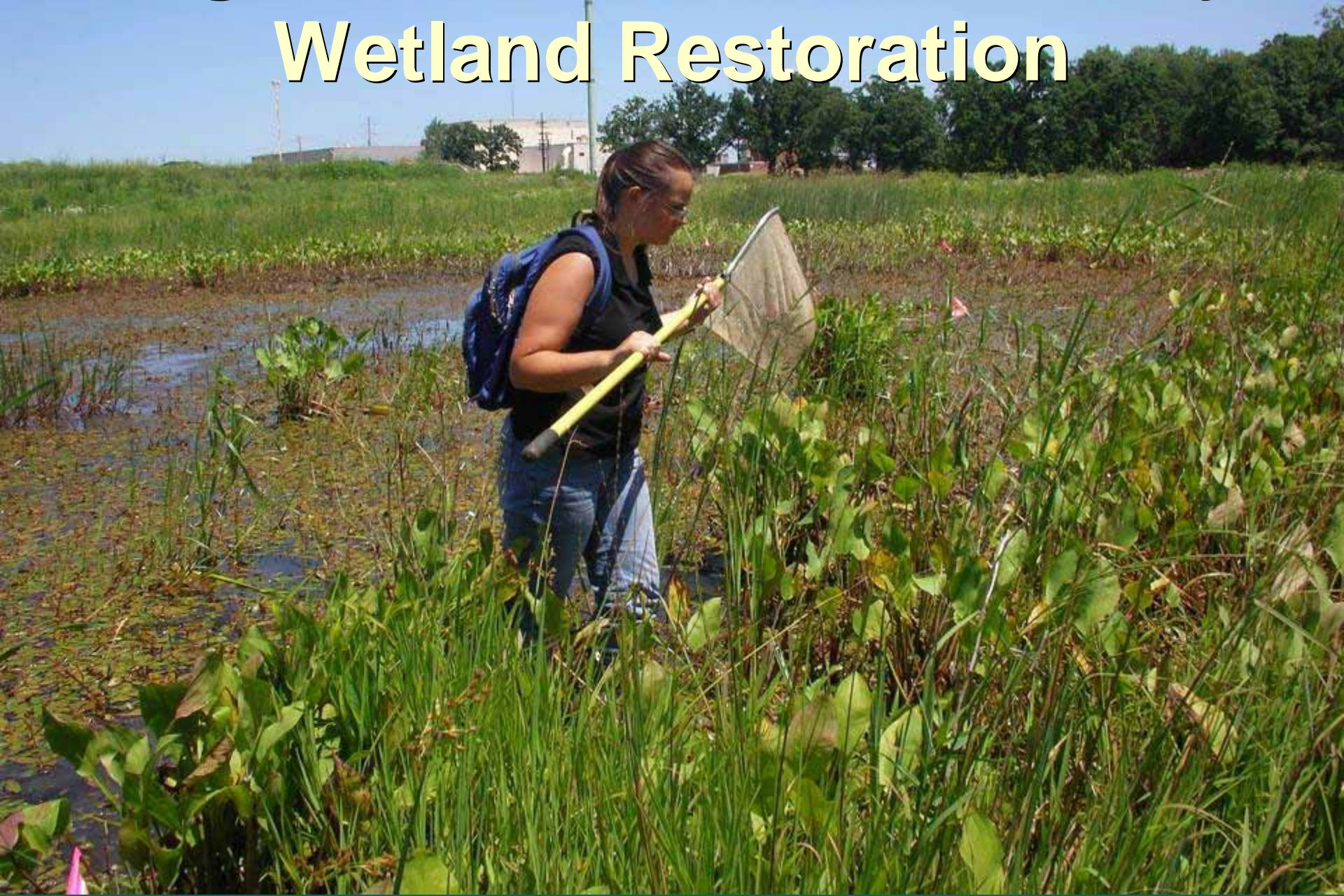
Geneva Middle School North





Wetland /Stream Corridor Restorations

Argonne National Laboratory Wetland Restoration



Argonne National Laboratory Wetland Restoration



Fermilab

Nepese Marsh Restoration



Fermilab Nepese Marsh Restoration



Erickson Retirement Communities

Monarch Landing

Naperville, IL



Erickson Retirement Communities

Monarch Landing
Naperville, IL



Chicago Premium Outlets

Stream Corridor/Wetland/Prairie Restoration

Aurora, IL



Chicago Premium Outlets

Stream Corridor/Wetland/Prairie Restoration

Aurora, IL





2008
Conservation and Native Landscaping Awards
CERTIFICATE OF RECOGNITION

is hereby granted to

Peg and Bill Jensen

for

**Deerwood Farm
Wayne, IL**

November 13, 2008

Deerwood Farm Wayne, IL





2008
Conservation and Native
Landscaping Awards
www.epa.gov/greenacres