

US EPA ARCHIVE DOCUMENT

Installing and Removing Smcreporter Stand-alone Version

Installing Smcreporter

Smcreporter is distributed on CD-Rom or as a downloadable zip file. The distribution includes a full featured install program. The install program includes three types of installations – 1) program files only, 2) program files and example method and data files (installing example files is recommended to verify the installation), and 3) C++Builder 4 source code for all executables.

Smcreporter will run on Windows 9x, Windows NT version 4, or Windows 2000 (it should work on XP, but has not been tested on that platform). In Windows NT and Windows 2000, it is necessary to have administrator privileges to properly install the program.

Remove any prior versions of Smcreporter by following the instructions below under ‘Removing Smcreporter’.

The installation CD has an autorun program and will start when placed in the CD drive. The downloadable zip program should first be unzipped to any media – i.e., a zip drive or a temporary directory on any mapped drive. It can then be copied to a CD (in which case the install will start when inserted in the CD drive), or started by executing the Setup.exe file in the location where the unzipped files reside.

The first dialog box displayed (Figure 1) prompts for the destination directory. Accept the default entry – C:\SMCREPORTER – or click the ‘Browse’ button to select an existing directory or enter a new directory name. Click the ‘Next’ button.

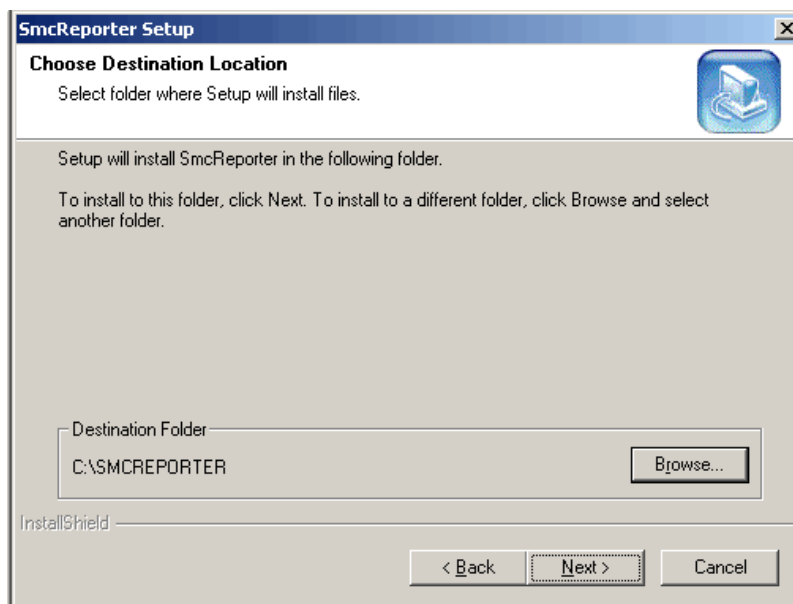


Figure 1 – Choose Destination Location Dialog

The 'Next' button will bring up the 'Setup Type' dialog (Figure 2). There are three setup types:

1. Program Files Only – this option installs only the files necessary to run Smcreporter. These files are listed in the User's Guide Appendix 1.
2. Programs and Example Data – installs the program files as above and example method and data files. This is the suggested option. The example files can be used to verify that the installation is working properly (see the User's Guide Appendix 2).
3. Source Code – installs the C++Builder 4 source code for Smcreporter. All source code will be installed in a subdirectory – Method8261 \ Smcreporter – under the installation directory.

Select the desired setup type and click the 'Next' button.

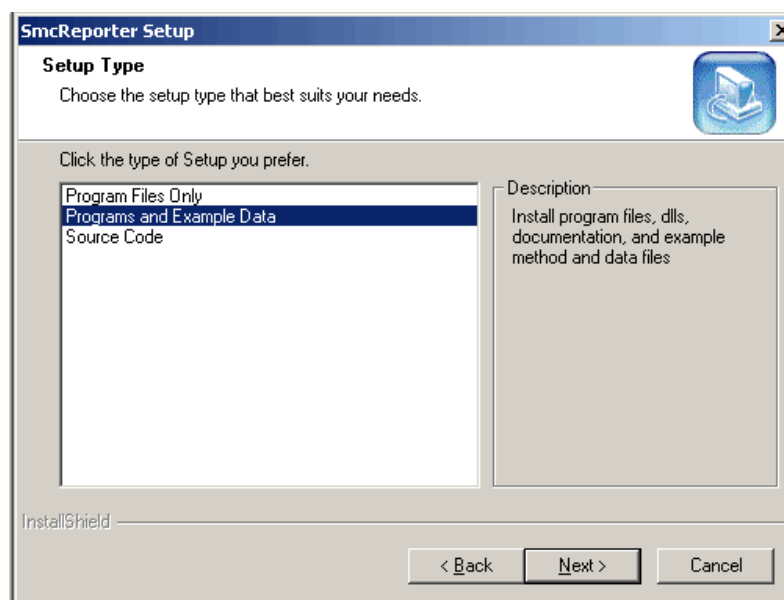


Figure 2 – Setup Type Dialog

After clicking 'Next', the Smcreporter files will be loaded onto the host machine. A progress bar will be shown and the install program will close at the end of the installation.

Removing Smcreporter

To remove Smcreporter, use the Windows Add/Remove Programs facility. Using the Start button, select Start | Settings | Control Panel. Select Add/Remove Programs. Highlight Smcreporter and click the Add/Remove button. All installed components of Smcreporter will be removed.