

US EPA ARCHIVE DOCUMENT







Water Balance

- 2.3 pore volumes or 5.7 bed volumes moved through waste
- When $\text{BOD}/\text{COD} < 0.1$, 0.2 pore volumes or 0.6 bed volumes were estimated
- Literature states that $\text{BOD}/\text{COD} < 0.1$ occurs when 0.4 pore volumes are added

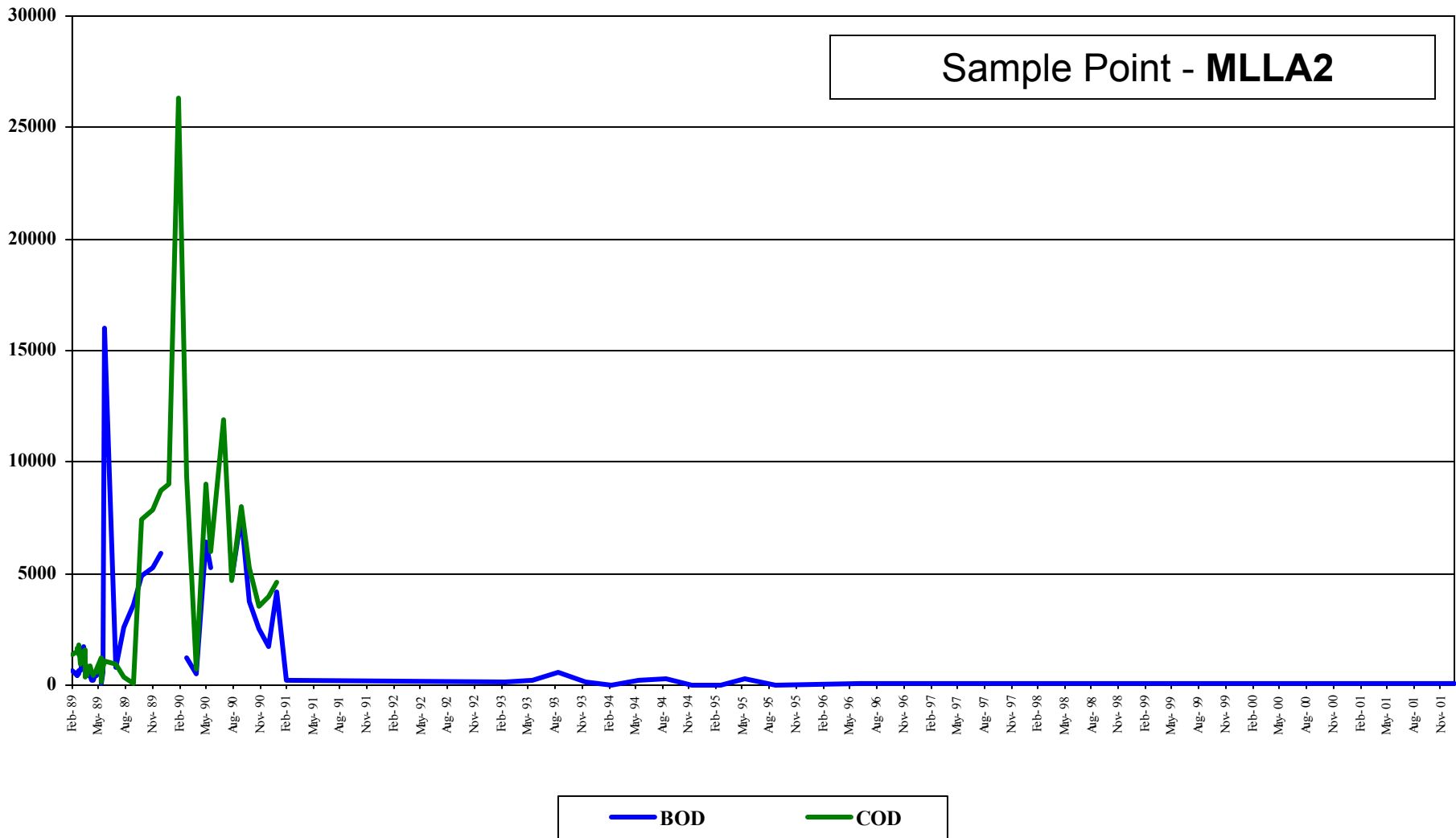


Monroe Livingston

Leachate BOD/COD



ALL BOD - COD Historical Data



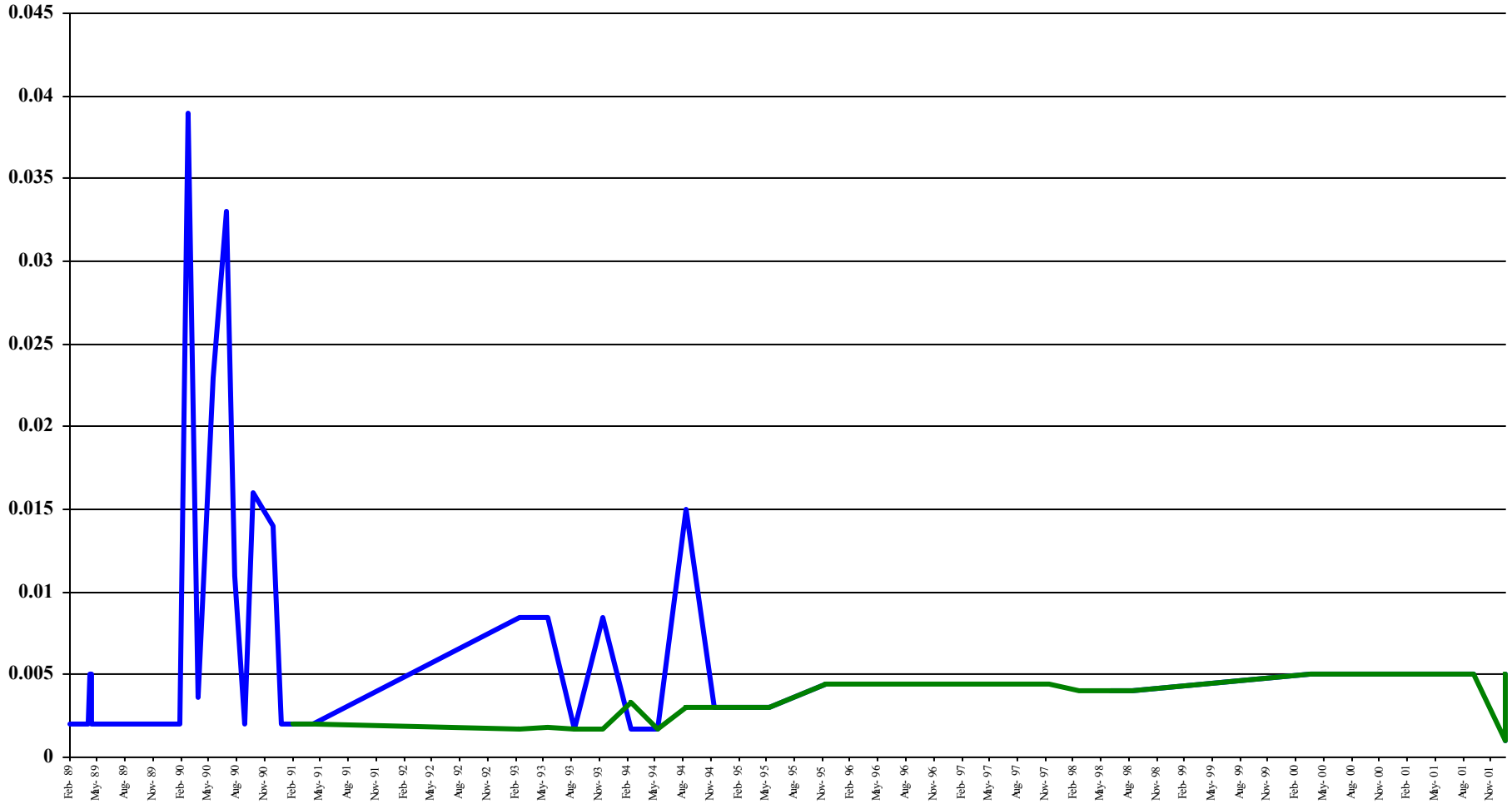
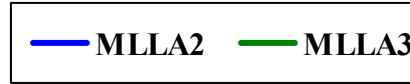


Monroe Livingston

METALS



Cadmium





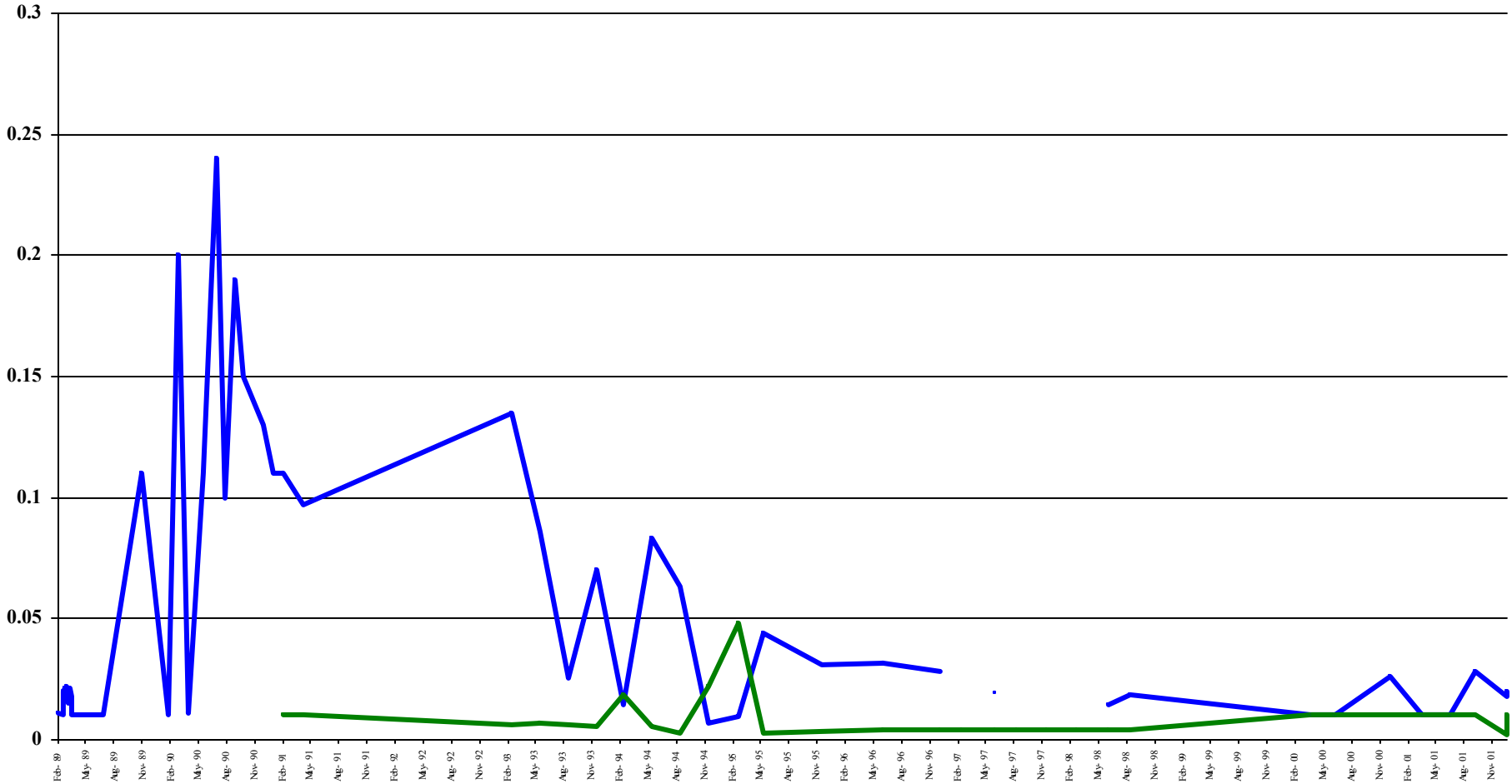
Monroe Livingston

METALS



Chromium

— MLLA2 — MLLA3



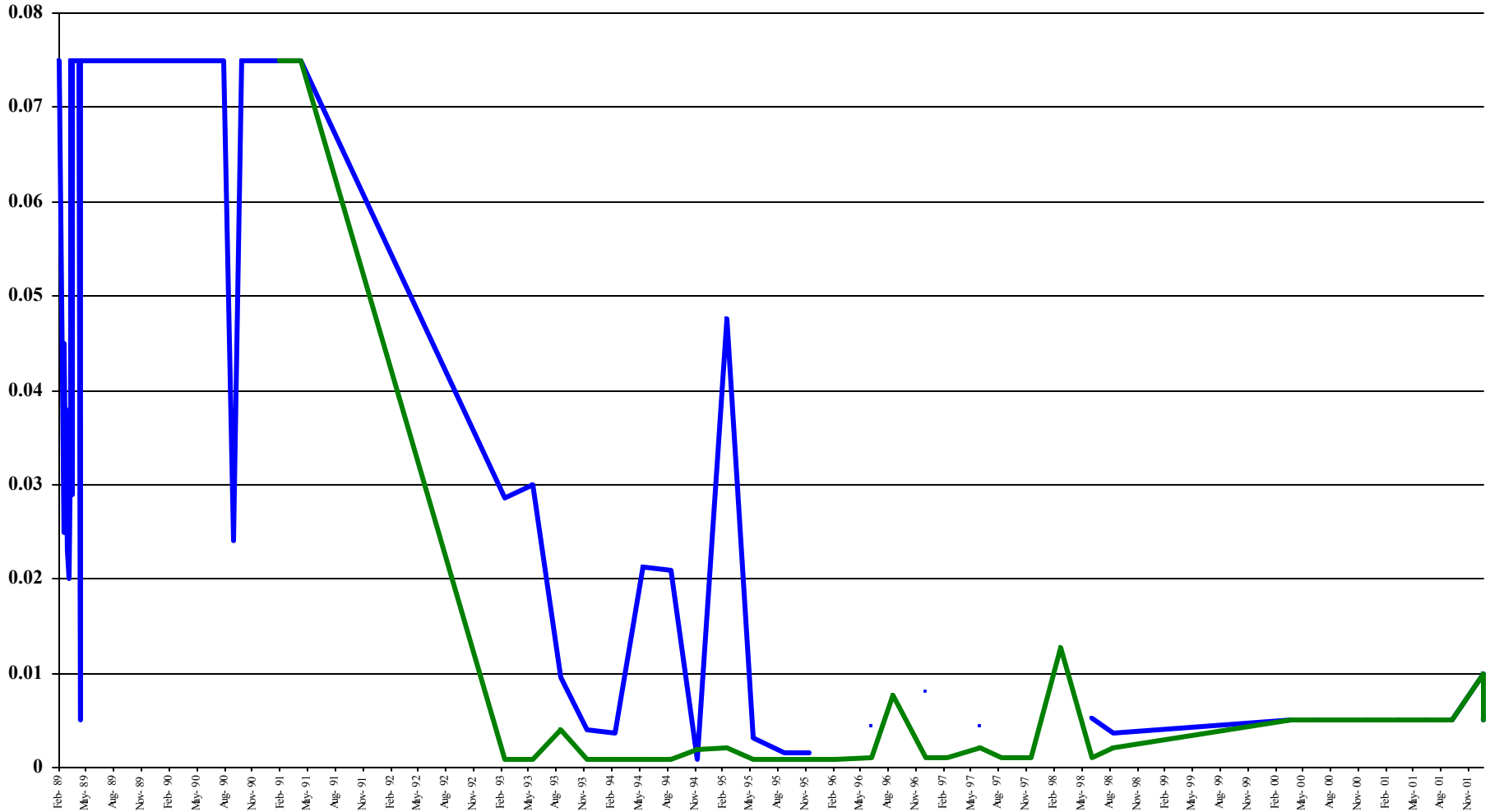


Monroe Livingston

METALS



Lead





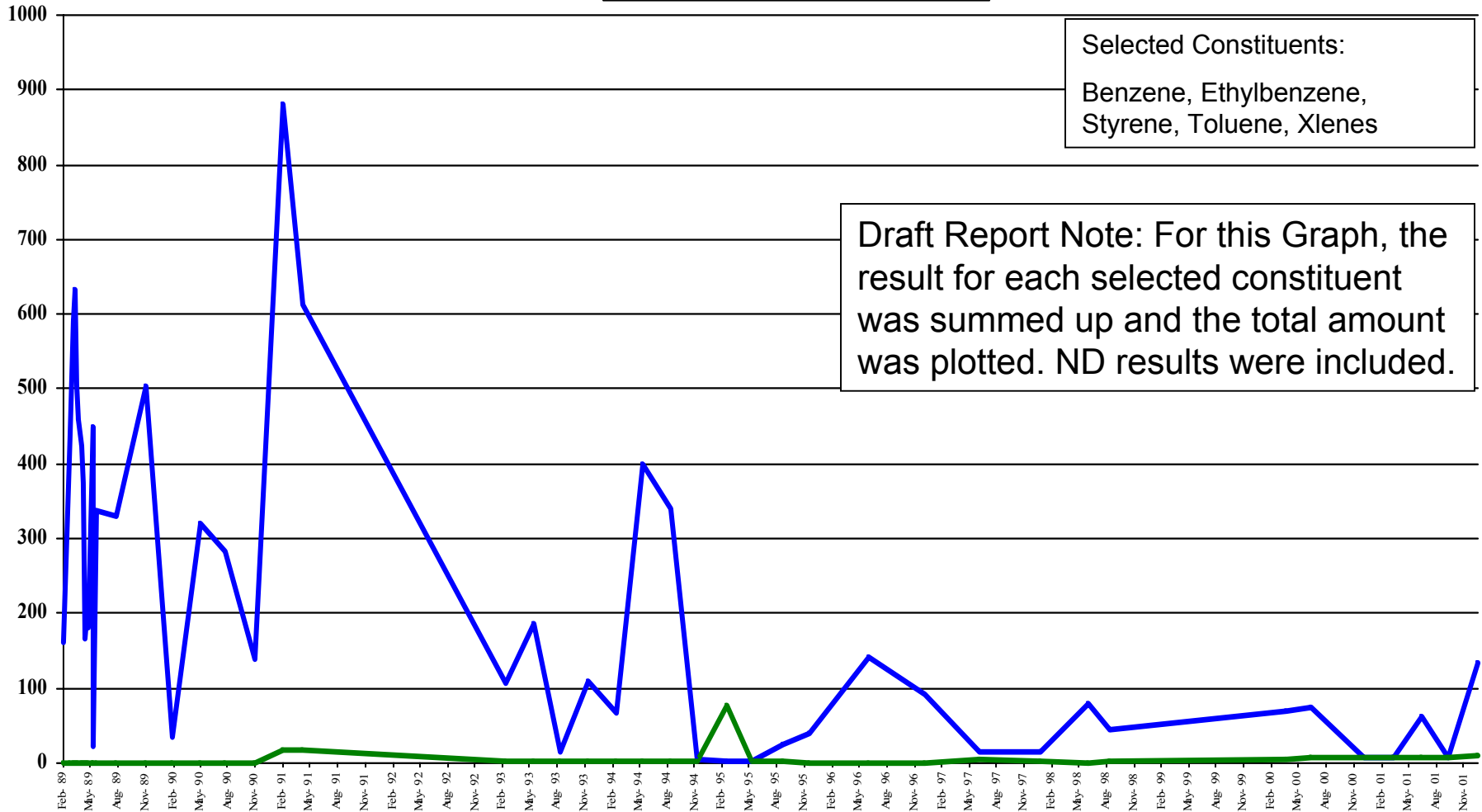
Monroe Livingston

VOC's



Total Aromatic VOC's

— MLLA2 — MLLA3





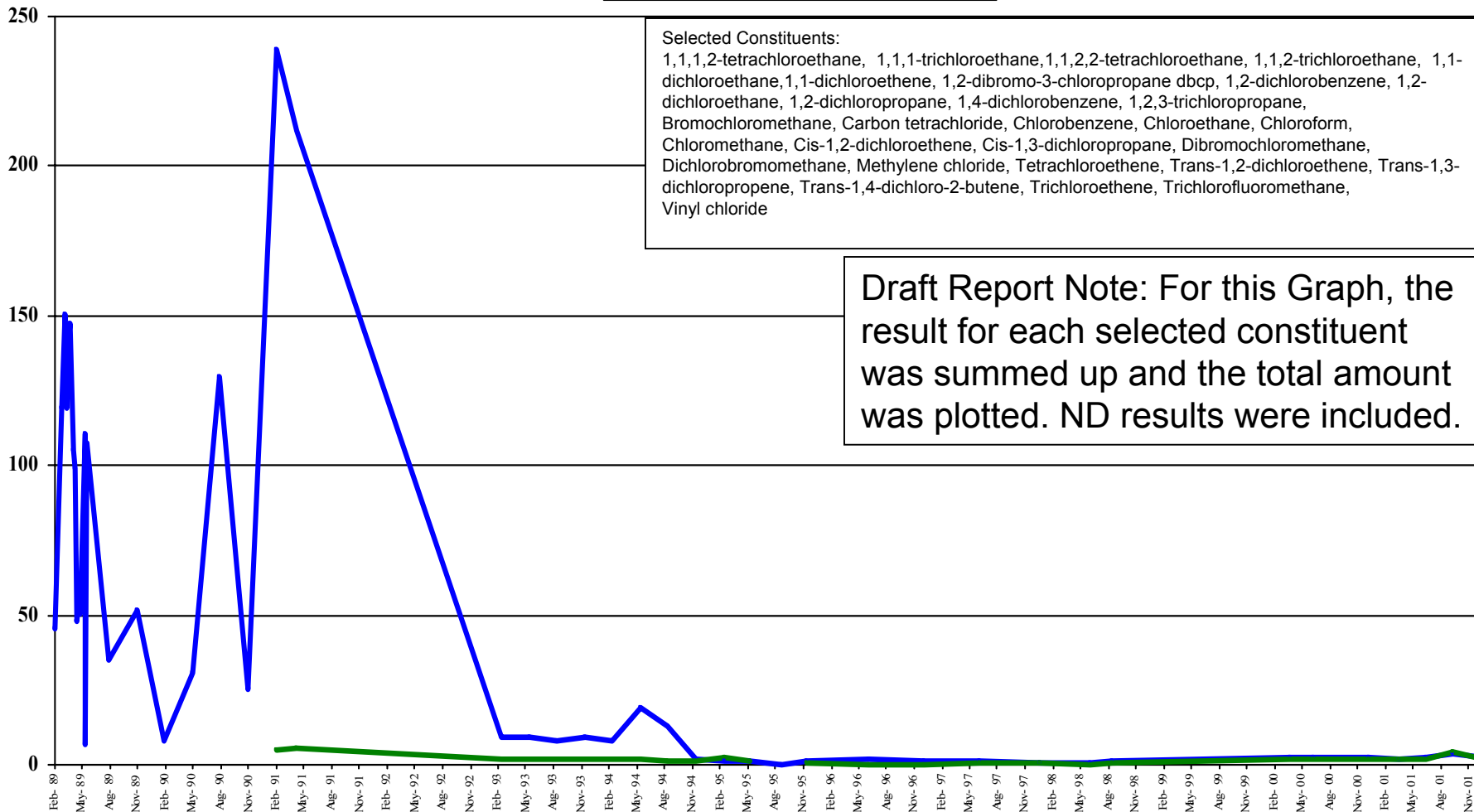
Monroe Livingston

VOC's

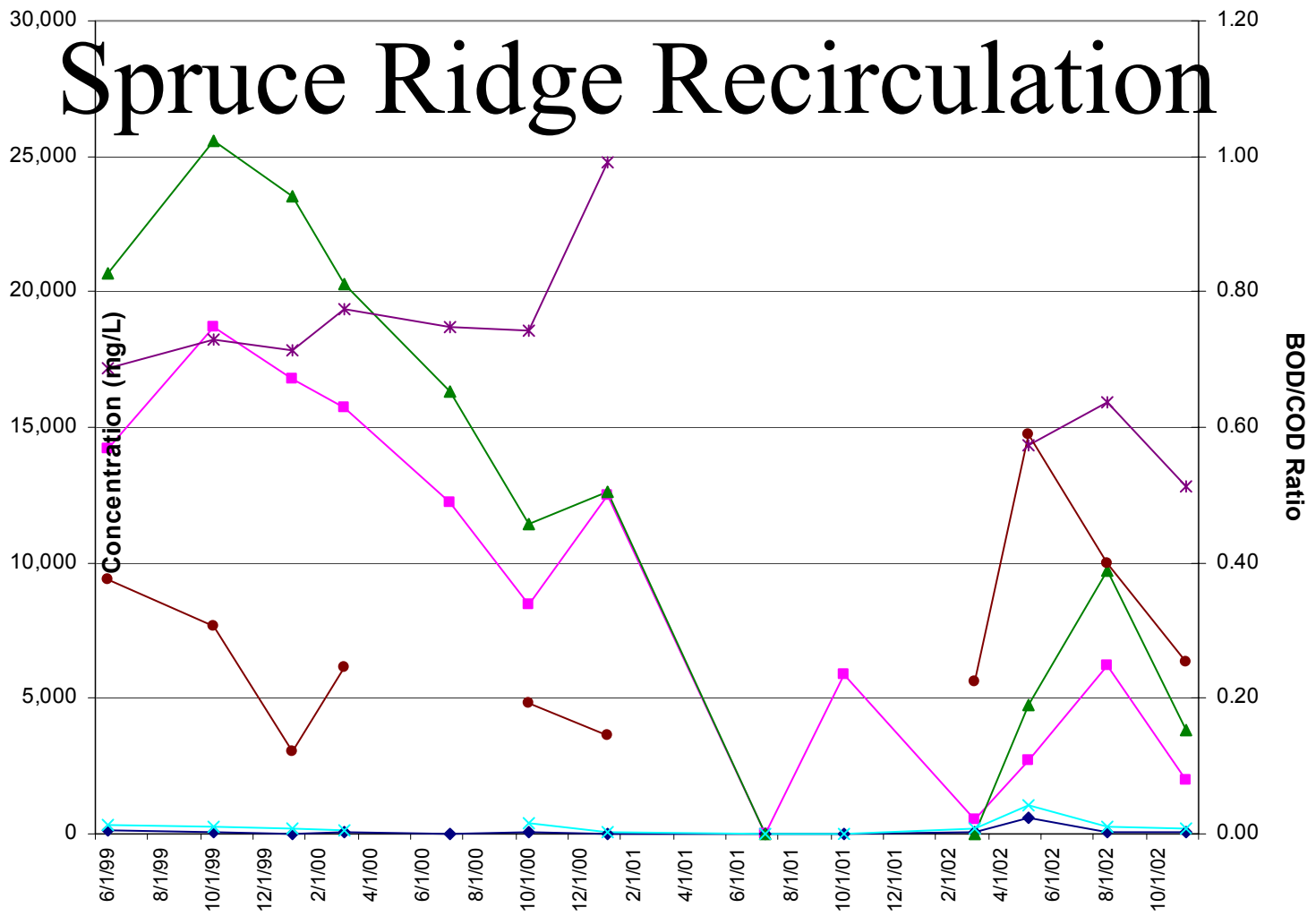


Total Chlorinated VOC's

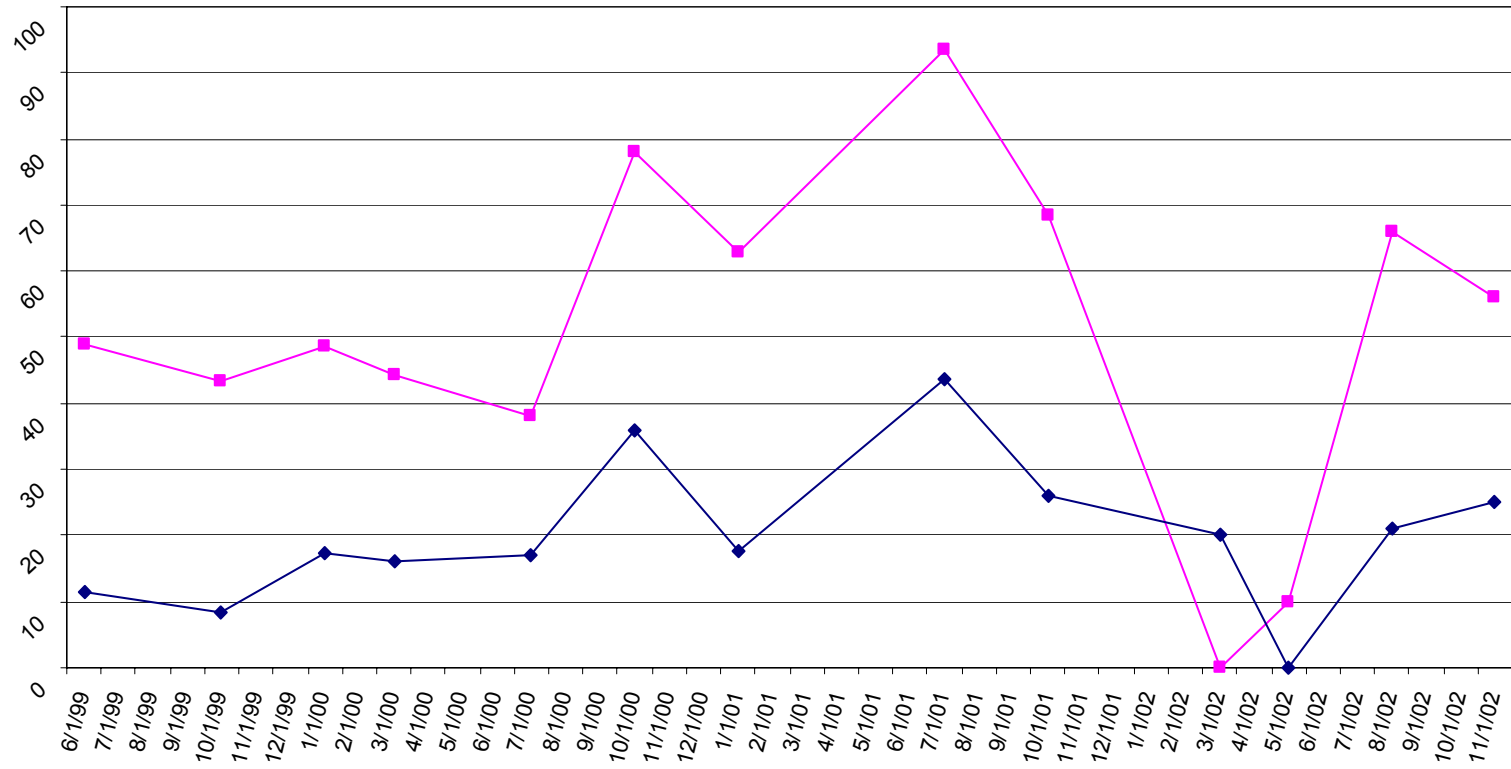
— MLLA2 — MLLA3



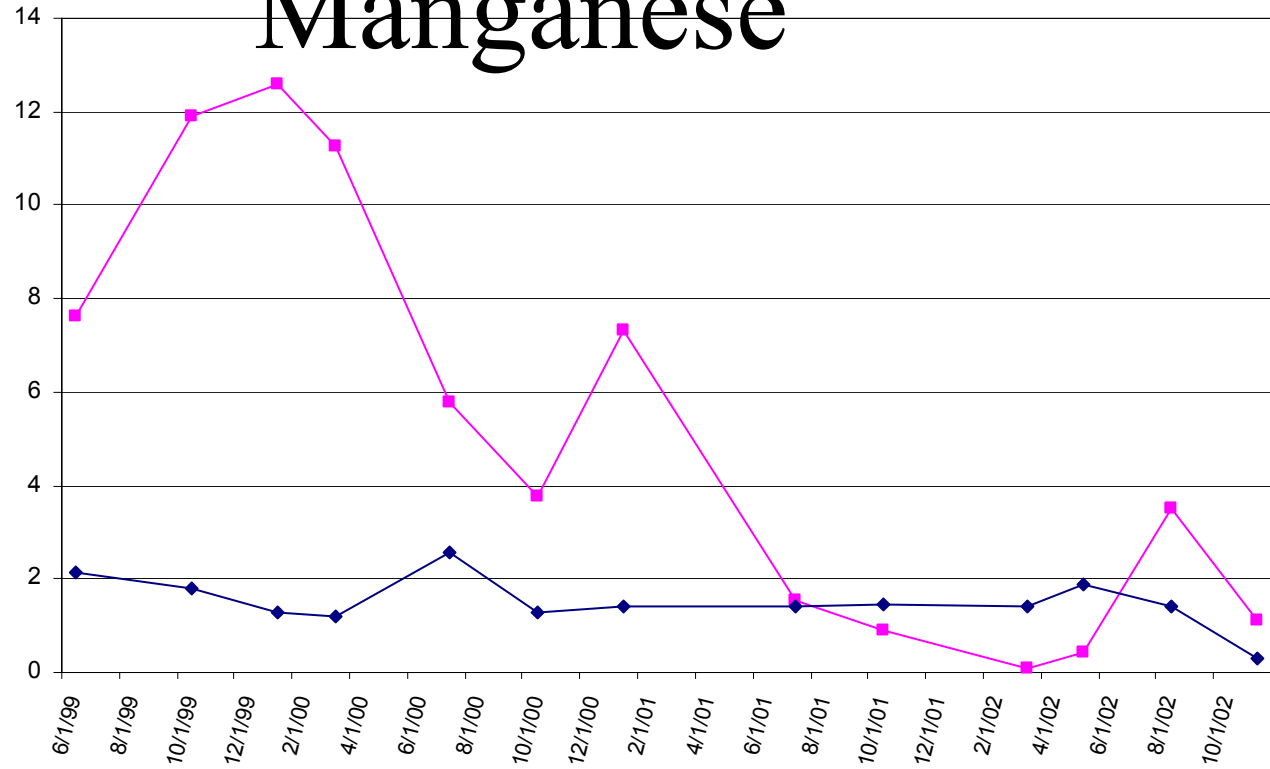
Spruce Ridge Recirculation



Arsenic

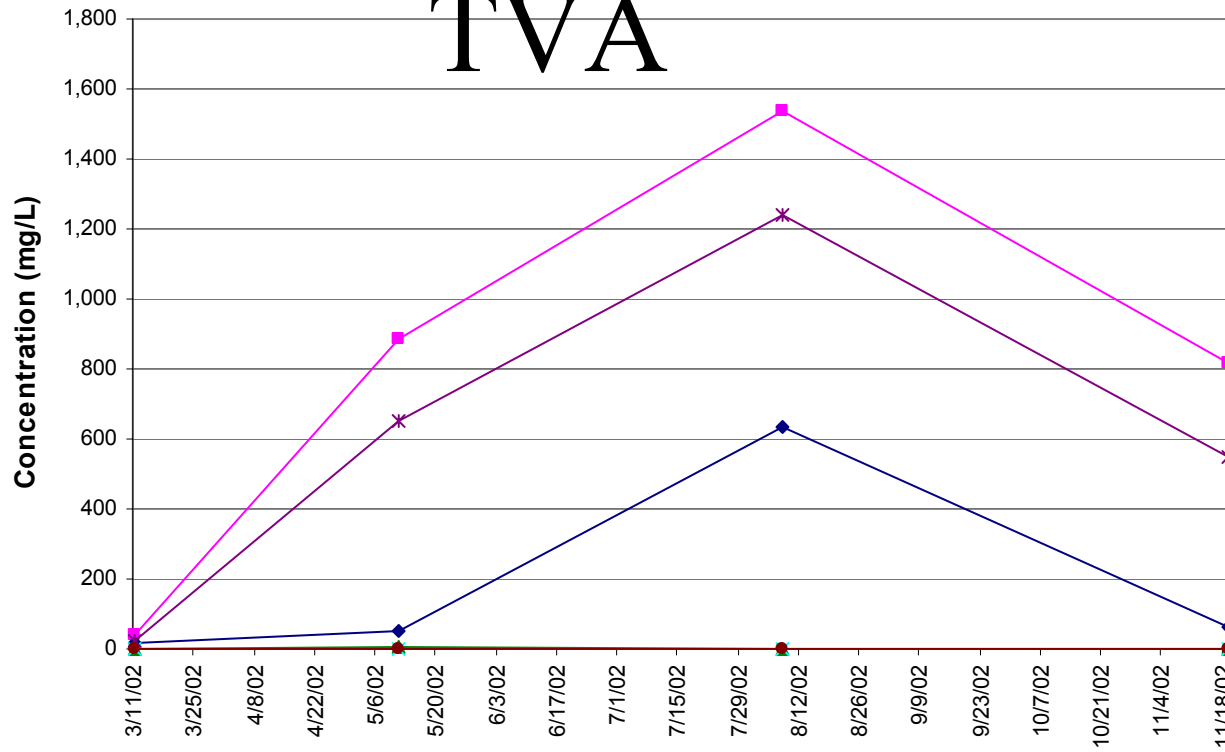


Manganese

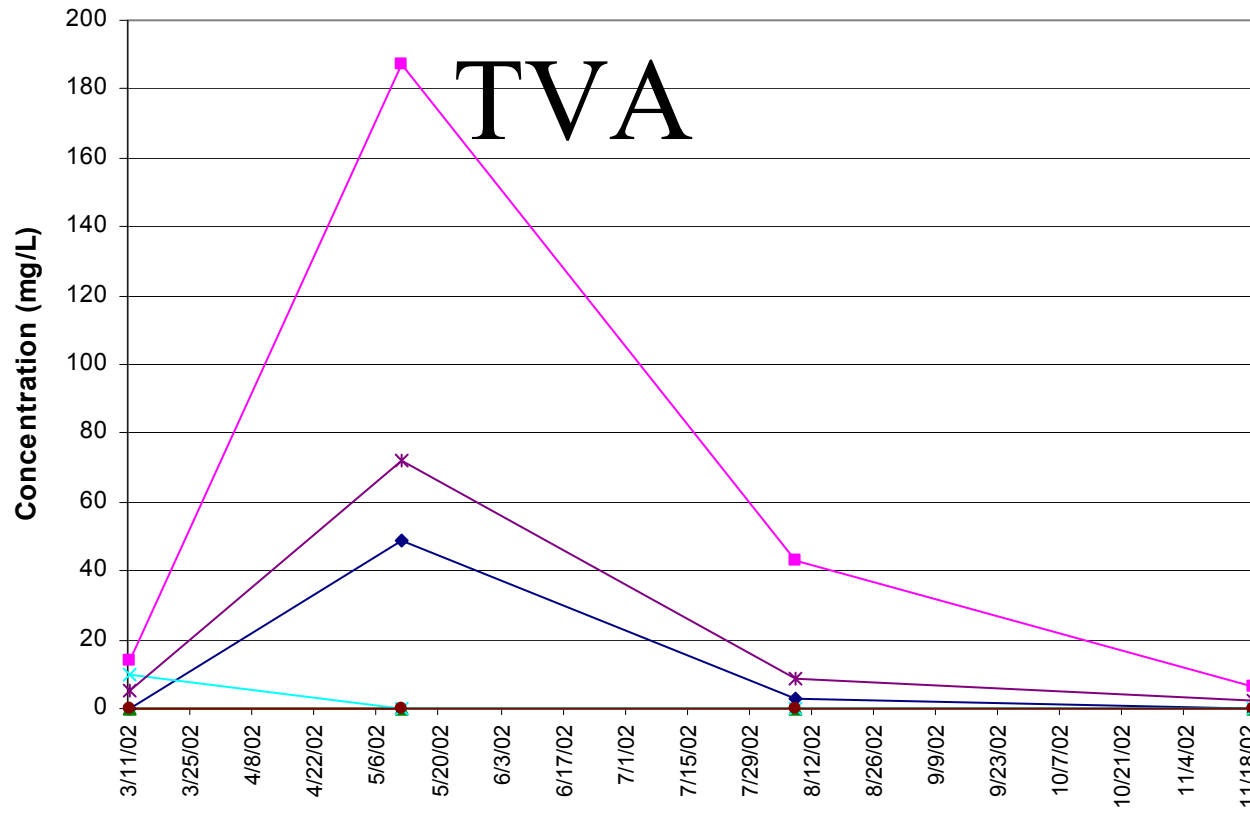


	06/23/99	10/19/99	01/11/00	03/30/00	07/20/00	10/24/00	01/09/01	07/12/01	10/25/01	03/11/02	05/11/02	08/08/02	11/19/02
—■— Manganese Conc. (mg/L)-Recirculation	7.6	11.9	12.6	11.28	5.764	3.78	7.3	1.53	0.904	0.097	0.41	3.5	1.1
—◆— Manganese Conc. (mg/L)-Control	2.13	1.78	1.28	1.199	2.559	1.27	1.42	1.42	1.45	1.4	1.9	1.4	0.3

TVA



	03/11/02	05/11/02	08/08/02	11/19/02
Acetic Acid Conc. (mg/L)- Recirculation	38	887	1,536	817
Butyric Acid Conc. -(mg/L)-Recirculation	17	52	632	63
Formic Acid Conc. (mg-L)- Recirculation	0	7	0	0
Lactic Acid Conc. (mg/L)-Recirculation	0	0	0	0
Propionic Acid(mg/l)- Recirculation	21	650	1,242	549
Pyruvic Acid(mg/l)-Recirculation	0	0	0	0



	03/11/02	05/11/02	08/08/02	11/19/02
Acetic Acid Conc. (mg/L) - Control	14	187	43	6.3
Butyric Acid Conc. (mg/L) - Control	0	49	2.7	0
Formic Acid Conc. (mg/L) - Control	0	0	0	0
Lactic Acid Conc. (mg/L) - control	10	0	0	0
Propionic Acid (mg/L) - control	5	72	8.8	2.1
Pyruvic Acid (mg/L) - control	0	0	0	0