

US EPA ARCHIVE DOCUMENT

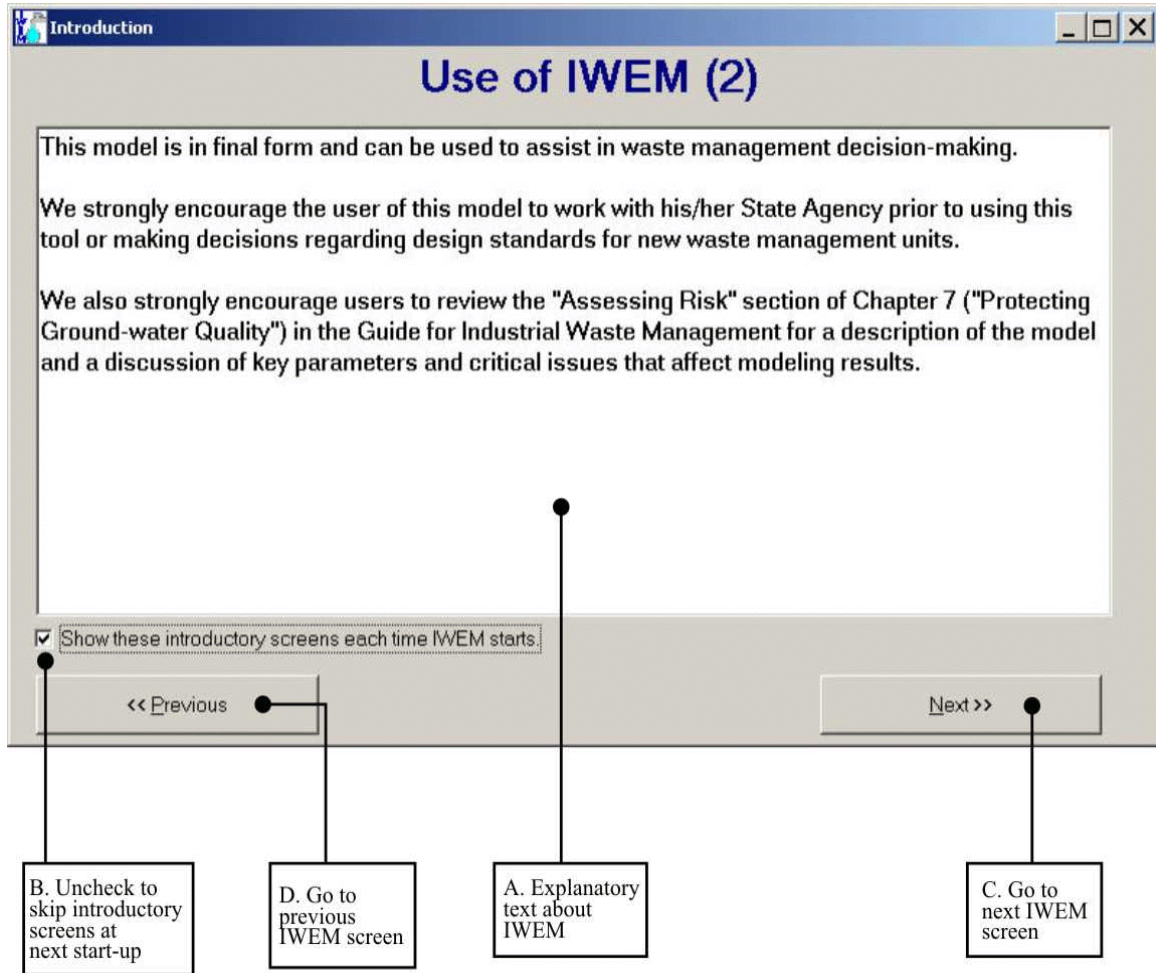


Figure 5.10 Introduction: Use of IWEM (2).

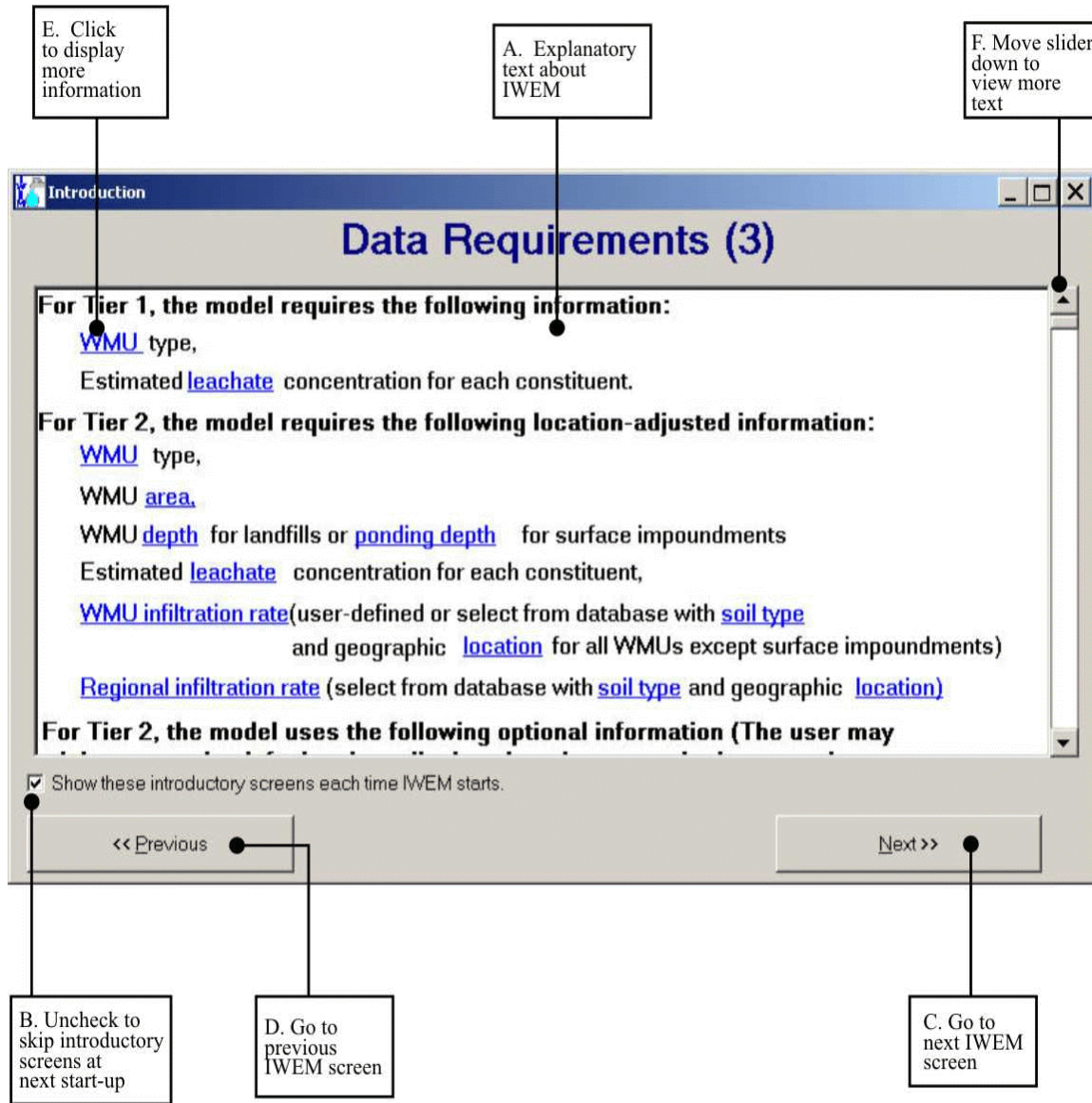


Figure 5.11 Introduction: Data Requirements (3).

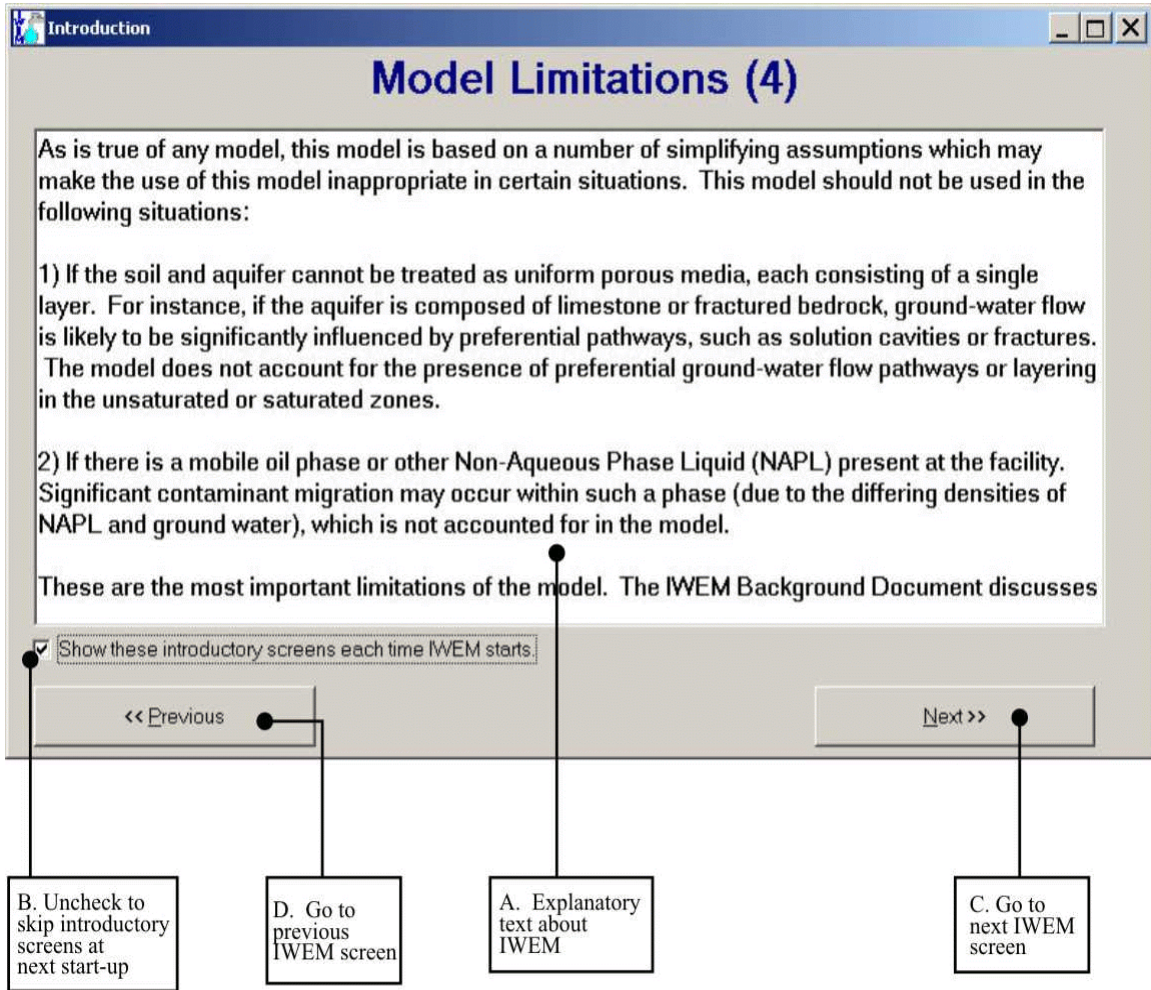


Figure 5.12 Introduction: Model Limitations (4).

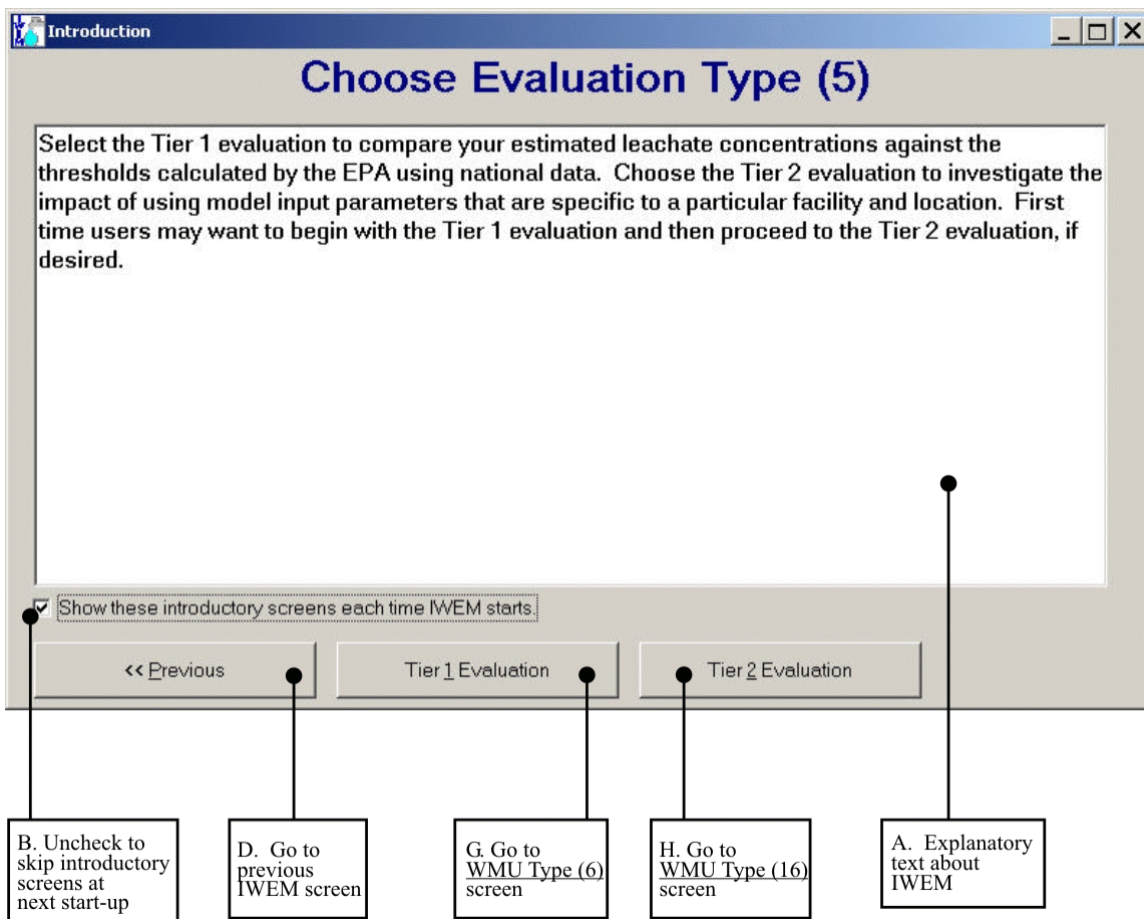
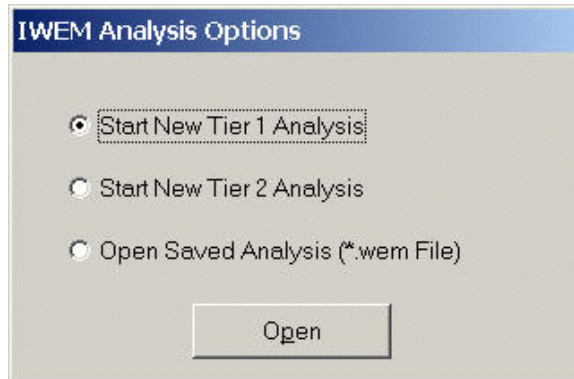


Figure 5.13 Introduction: Choose Evaluation Type (5).

B. Uncheck to Skip Introductory Screens at Next Start-up

After reading this introductory information, you can uncheck the |SHOW THESE INTRODUCTORY SCREENS EACH TIME IWEM STARTS| check-box at the bottom of the screen to prevent these screens from being displayed the next time the program is run. The introductory information can be viewed at any time by choosing |INTRODUCTION| from the |HELP| menu.

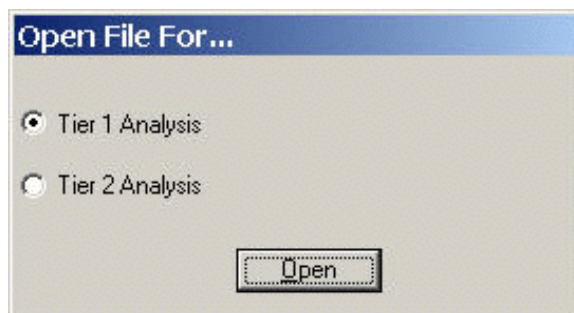
If you uncheck this check box, the next time you launch IWEM, you will see the following dialog box:



Select the **START NEW TIER 1 ANALYSIS** radio button and click the **OPEN** button to start a new Tier 1 analysis; doing so will take you directly to the WMU Type (6) screen – the first Tier 1 input screen.

Select the **START NEW TIER 2 ANALYSIS** radio button and click the **OPEN** button to start a new Tier 2 analysis; doing so will take you directly to the WMU Type (16) screen – the first Tier 2 input screen.

Select the **OPEN SAVED ANALYSIS (*.wem FILE)** radio button and click the **OPEN** button to open a previously saved IWEM analysis; doing so will launch the familiar Windows **OPEN** dialog box where you can navigate to the folder and file containing the previously saved IWEM analysis. This file will have a “.wem” file extension. After you select the appropriate file, the following dialog box will be displayed:



You can select the **TIER 1 ANALYSIS** radio button and click the **OPEN** button to open your saved analysis in Tier 1; doing so will take you directly to the WMU Type (6) screen – the first Tier 1 input screen. Or, you can select the **TIER 2 ANALYSIS** radio button and click the **OPEN** button to open your saved analysis in Tier 2; doing so will take you directly to the WMU Type (16) screen – the first Tier 2 input screen. By default, IWEM will open the file for a Tier 1 analysis.

C. Go to Next IWEM Screen

Click the |NEXT| button at the bottom right of the screen to proceed to the next screen.

D. Go to Previous IWEM Screen

Click the |PREVIOUS| button at the bottom left of the screen to go back to the previous introductory screen.

E. Click to Display More Information

Clicking on any keyword displayed in blue underlined text will display a text box containing a definition or other information about the underlined item. After reading the definition, you can click on the |OK| button at the bottom of the dialog box to close the text box and return to the Data Requirements (3) screen.

F. Move Slider Down to View More Text

Depending upon your monitor settings, you may need to use the scroll-bar on the far right side of these screens to display more text if the complete text does not fit on the screen all at once.

G. Go to WMU Type (6) screen

Click on the |TIER 1 EVALUATION| button to begin a Tier 1 analysis for your waste. Generally, you should perform the Tier 1 analysis first and then proceed on to the Tier 2 analysis, if appropriate. A Tier 1 evaluation begins at WMU Type (6) screen (Section 5.4).

H. Go to WMU Type (16) screen

Click on the |TIER 2 EVALUATION| button to begin a Tier 2 analysis for your waste. Generally, you should perform the Tier 1 analysis first and then proceed on to the Tier 2 analysis, if appropriate. However, if desired, you can proceed directly to Tier 2 by clicking this button. A Tier 2 evaluation begins at WMU Type (16) screen (Section 5.5).

You can also begin an evaluation by using either of these methods:

- Click on the |EVALUATION| menu and choose from |TIER 1| or |TIER 2|, or
- Click on the |T1| or |T2| toolbar buttons.