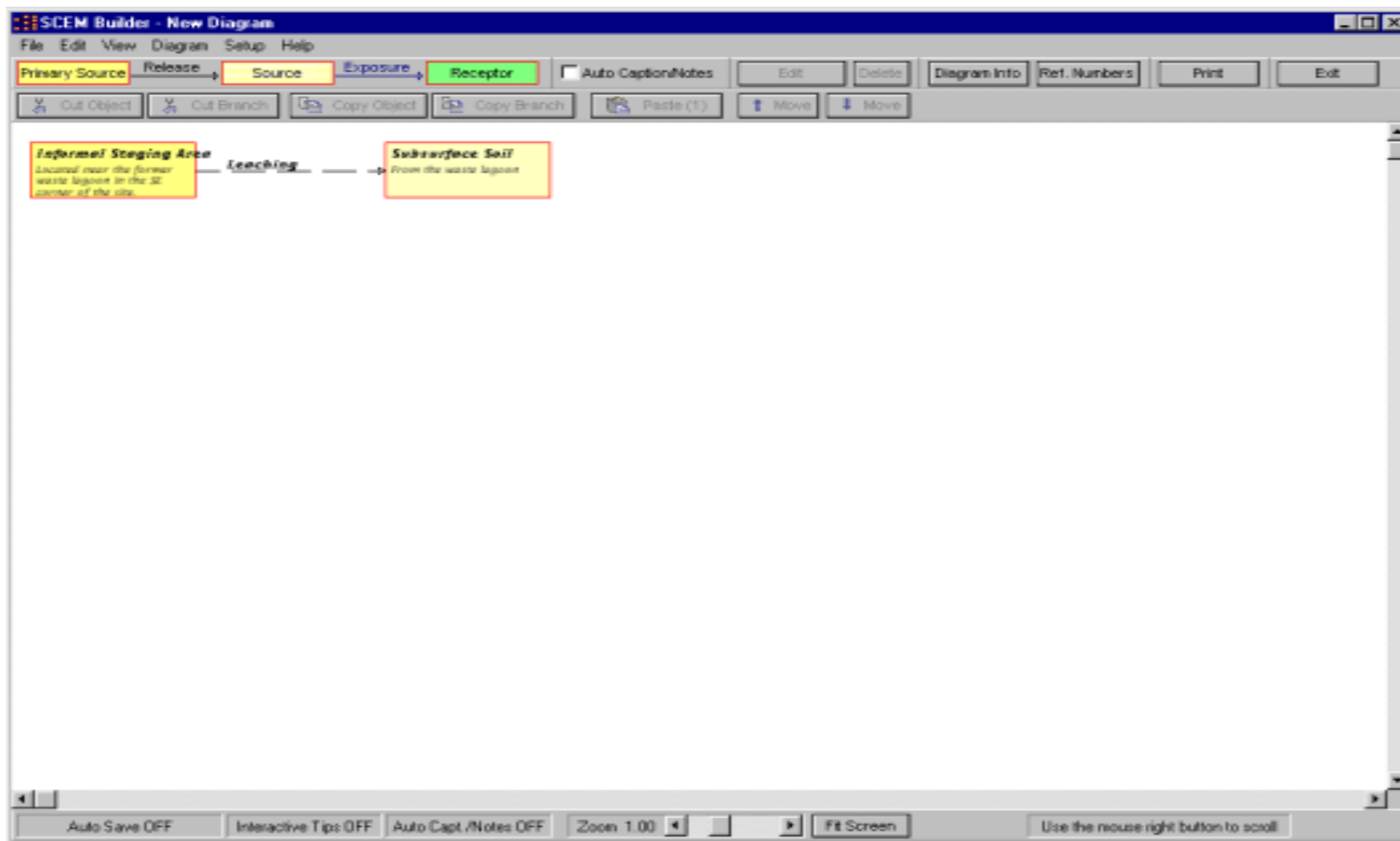


US EPA ARCHIVE DOCUMENT

Step-by-Step Instructions to Complete a Sample SCEM Design

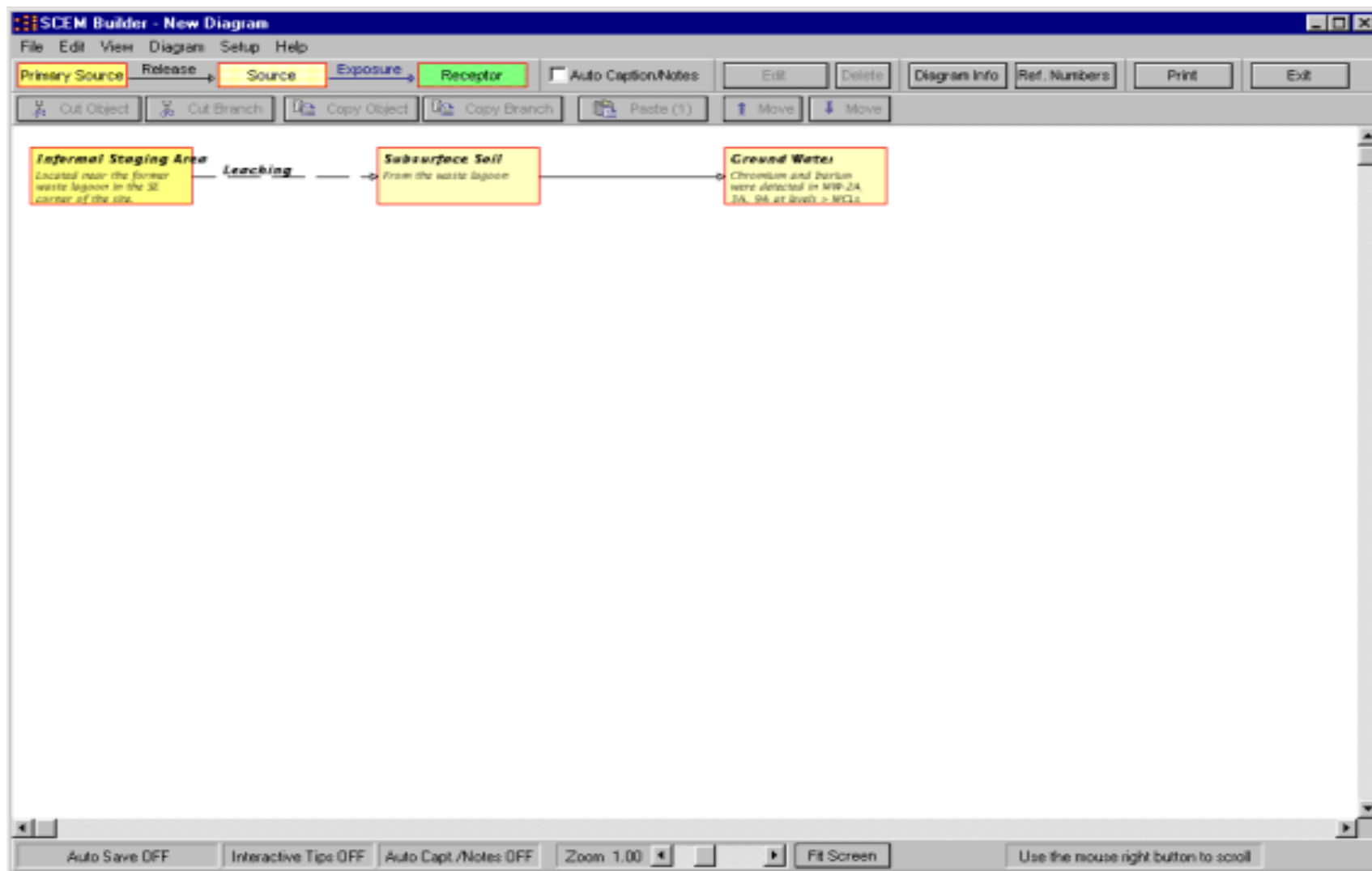
Step 1: Click and drag the Primary Source box to the “New Diagram” page (the first screen to appear upon entering the SCEM Builder). To insert text, double click on box. Click and drag the Release Mechanism, placing it next to the Primary Source box. To insert text, double click on arrow. Select appropriate line style (in this case, “Insignificant Pathway” was chosen). Click and drag the Source box, placing it next to the Release Mechanism. To insert text, double click on box. (see Figure 1)

Figure 1



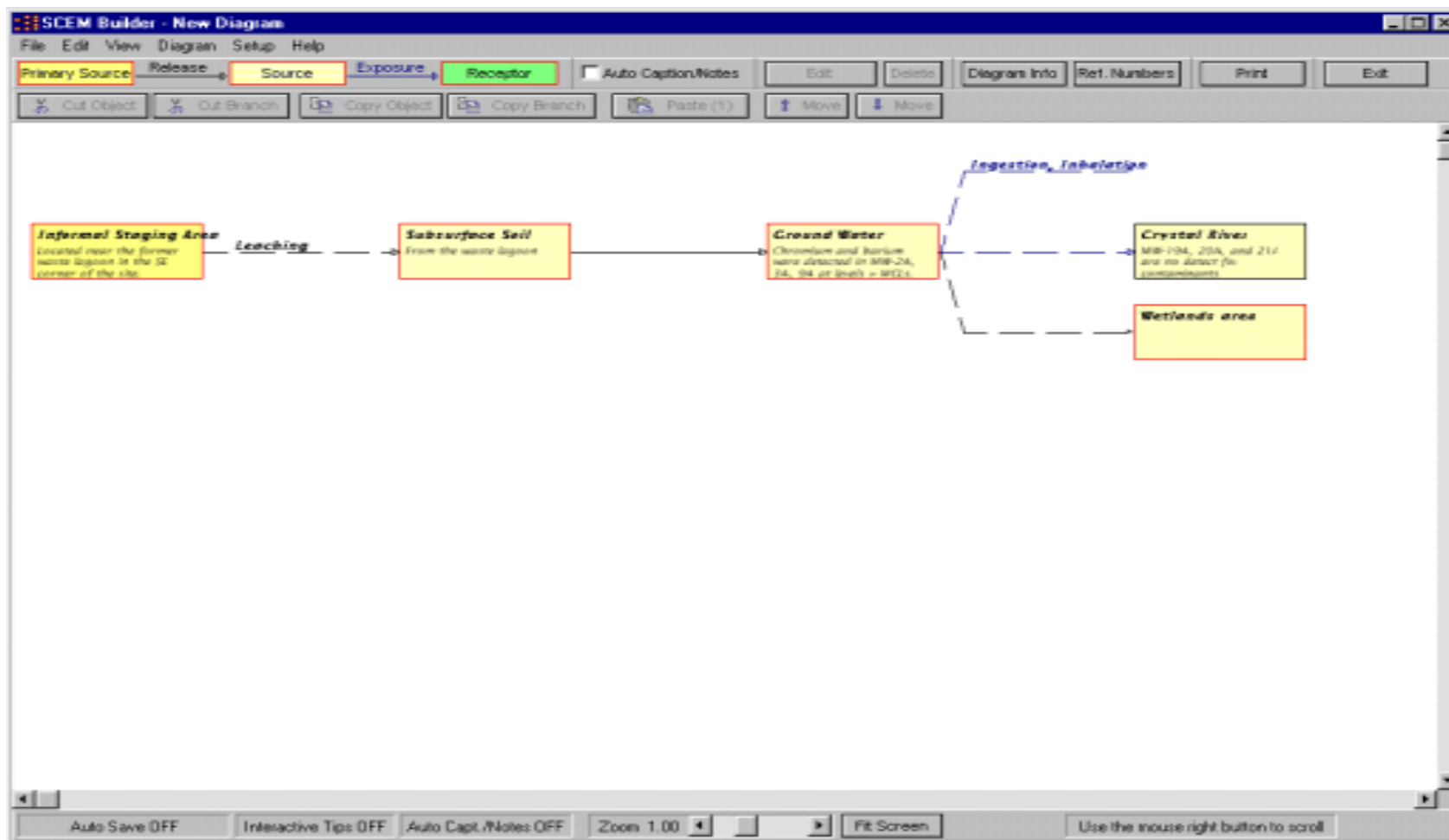
Step 2: Click and drag the Release Mechanism, placing it next to the Source box. Select appropriate line style (in this case, “Significant Pathway” was chosen). Click and drag the Source box, placing it next to the Release Mechanism. To insert text, double click on box. (see Figure 2)

Figure 2



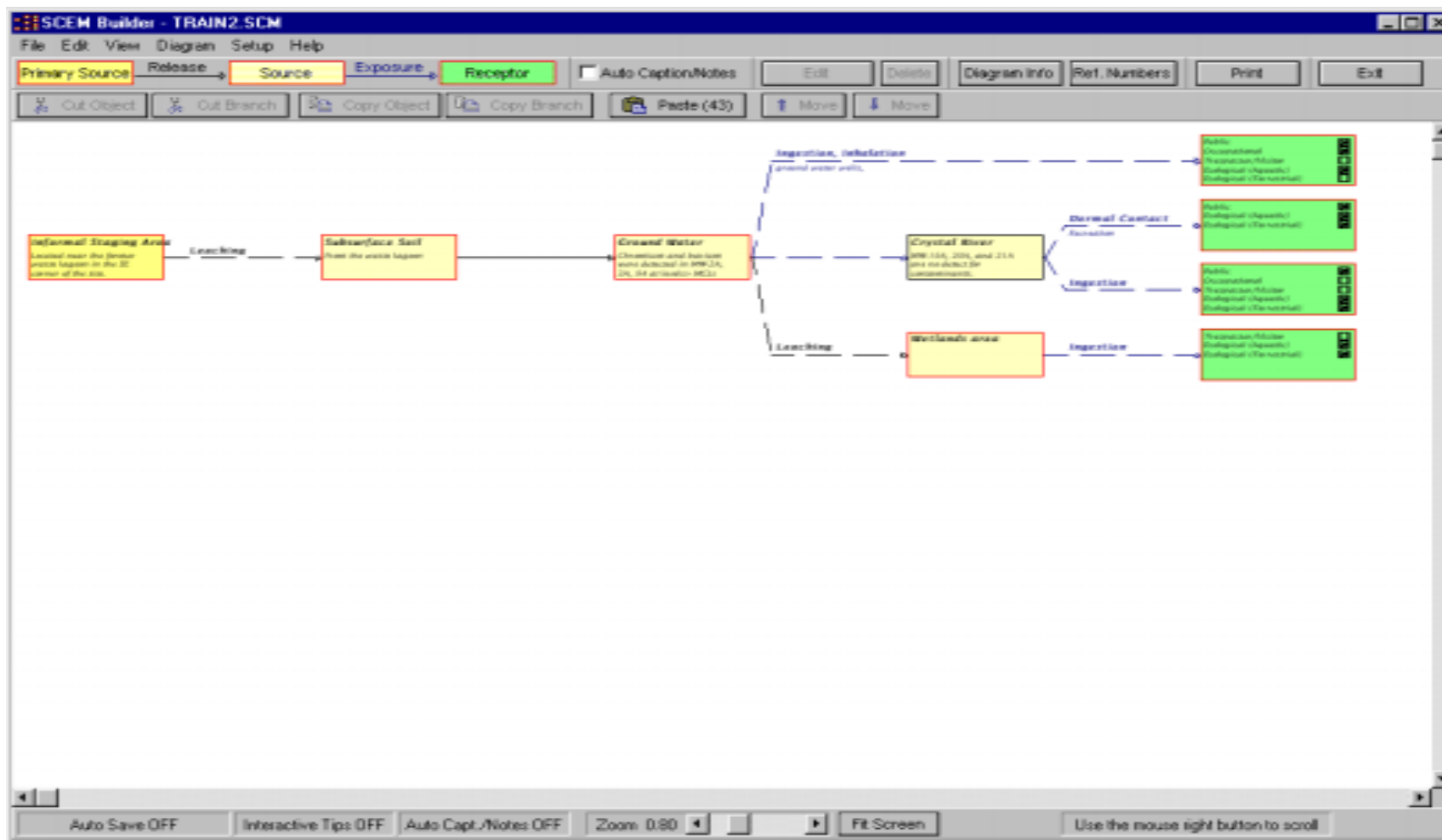
Step 3: Click and drag the Release Mechanism, placing it next to the Source box marked “Ground Water.” To place a second and third arrow from the box, click the arrow to select it and then click “Copy Object.” Click the source box marked “Ground Water” to select it and then click “Paste Object” twice. Select appropriate line style (in this case, “Insignificant Pathway” was chosen). (Note: The program automatically adjusts the type of arrow given the box to which it is linked (i.e. Source or Receptor) so it is acceptable to copy either an Exposure or a Release Mechanism). To insert text, double click on arrow. Place a Source box next to each of the middle and bottom arrows and insert text. (see Figure 3)

Figure 3



Step 4: Click and drag the Exposure Mechanism, placing one next to each of the two remaining Source boxes. Select appropriate line style (in this case, “Insignificant Pathway” was chosen). To place a second arrow on the box marked “Crystal River,” click the arrow to select it and then click “Copy Object.” Click the Source box to select it and then click “Paste Object.” To insert text, double click on arrow. Click and drag the Receptor box, placing one next to each of the four remaining Exposure Mechanisms. To insert text, double click on box. (see Figure 4)

Figure 4



Note: There can be multiple Primary Sources, Release Mechanisms, etc. Release mechanisms link one Primary Source to the next Source, or one Source to the next Source. An Exposure Mechanism links one Source to one Receptor.

Other Important Functions

Note Function

Besides adding text that appears inside the boxes or above the arrows, more detailed notes can be added. When printed, these notes will appear on a separate page. To insert or edit notes to a box or arrow, double click on the object, then insert/edit text in the space marked “Notes.” To easily view individual notes, click on the desired box or arrow and then click Notes Window.

Line Styles

To change the names of line styles, click on the Diagram pull-down menu, then click on Line Styles. Click inside the boxes to edit the names.

Diagram Information

To insert/edit title, description, file name, and modification and creation information, click on the Diagram pull-down menu, then click on Diagram Information. Click inside the boxes to insert/edit.

Printing

To print, click the File pull-down menu, then select Print Diagram. Under Print Options, select the elements of the Diagram you would like to print. Each option prints on a separate page.

Download Directions

Point web browser to the DOE/EH-413 Home Page (see Figure 5)

<http://tis-nt.eh.doe.gov/oepa/programs/scem.cfm> Find the section entitled "Download SCEM Builder" and follow the instructions.

Figure 5

