

US EPA ARCHIVE DOCUMENT

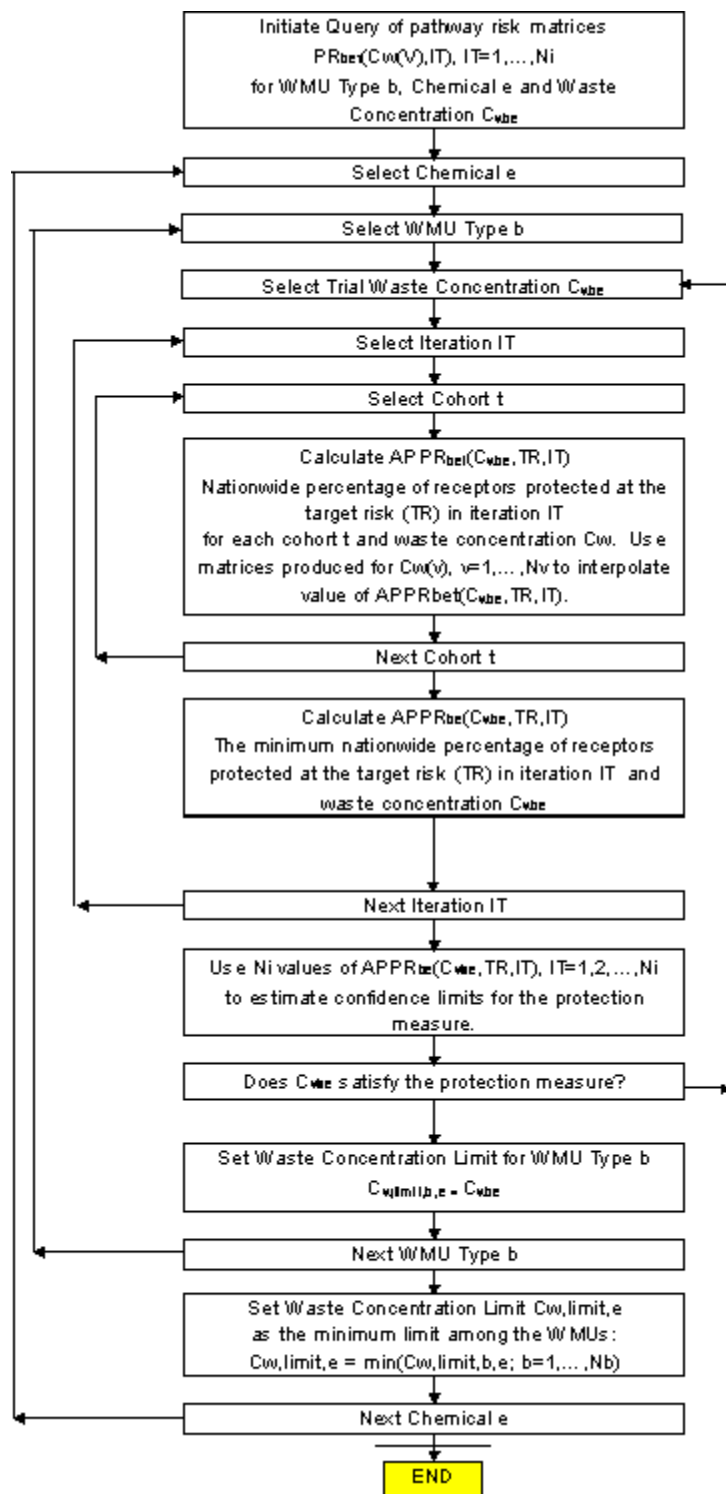


Figure 3.7 Exit level determination flowchart.

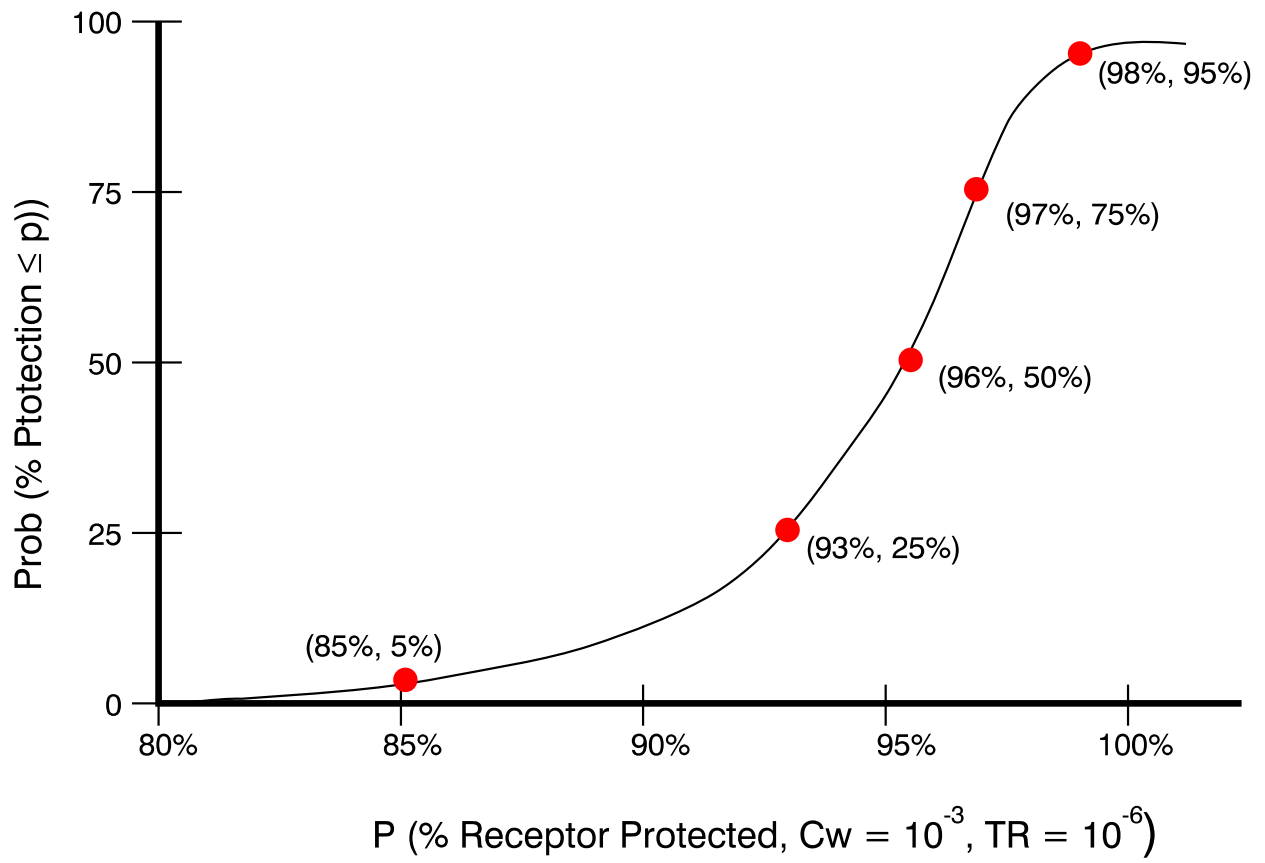


Figure 3.8 Probability that percent protection is less than P for a given waste concentration and target risk level.

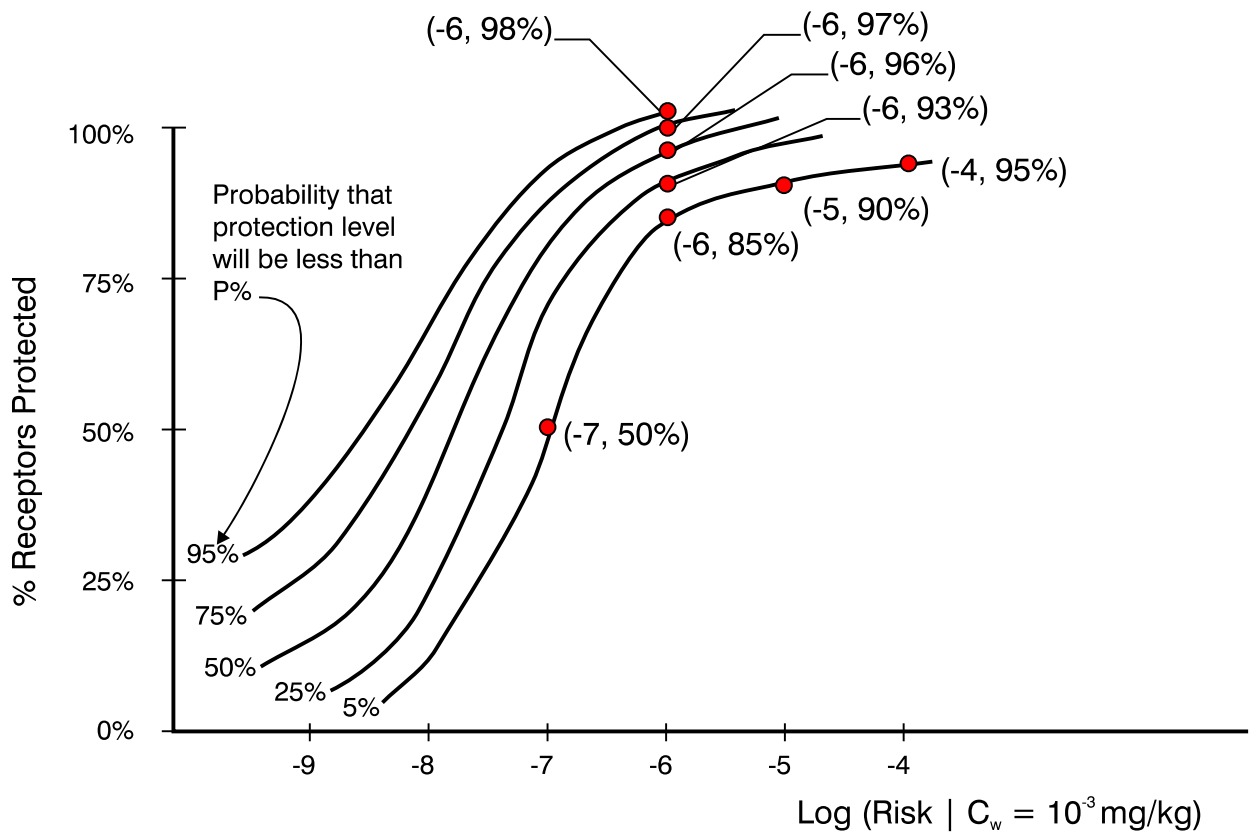


Figure 3.9 Percent of receptors protected for different risk levels and  $C_w = 10^{-3}$  for  $N_i$  Monte Carlo iterations.

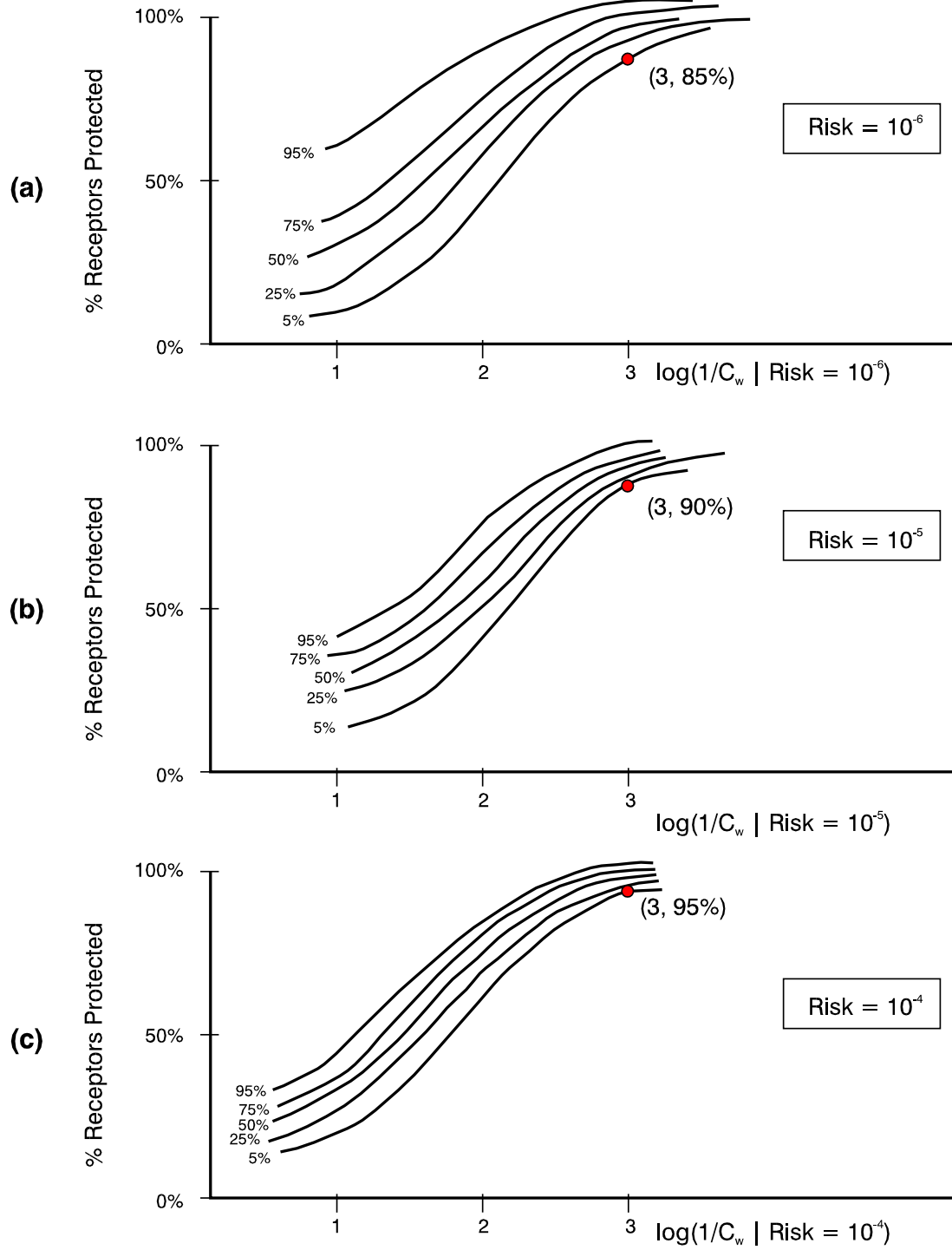


Figure 3.10 Percent of receptors protected for different waste concentrations and risk levels.

