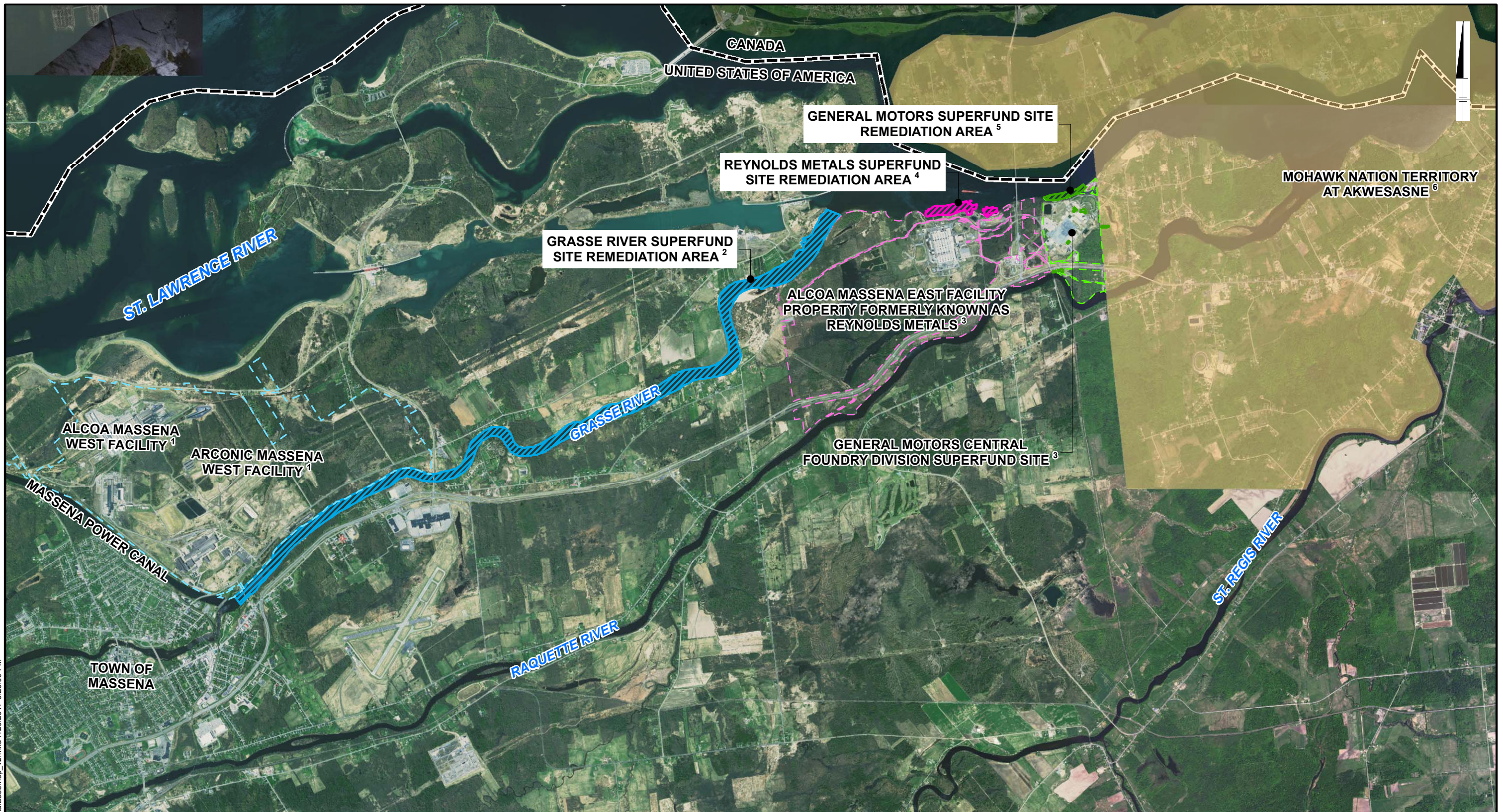


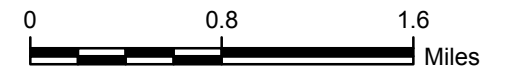
US EPA ARCHIVE DOCUMENT

City: Syracuse Div/Group: IM/DV Created By: K Sinsabaugh Last Saved By: Ksinsabaugh
 Arconic (B0010886,2001,00001)
 C:\Arconic\GrasseRiver\Basemap\mxd\AerialBasemap_v2.mxd 7/20/2017 3:23:09 PM



NOTES:

1. ARCONIC MASSENA WEST FACILITY BOUNDARY PROVIDED BY ARCONIC IN FIGURE 1-1 VICINITY MAP - VILLAGE OF MASSENA, MASSENA WEST & MASSENA EAST UPDATED 2015 AUG 17.
2. EXTENT OF GRASSE RIVER SUPERFUND SITE REMEDIATION AREA REMEDIATION DEFINED IN THE RECORD OF DECISION (USEPA, APRIL 2013).
3. GENERAL MOTORS PROPERTY AND THE REYNOLDS METALS PROPERTY BOUNDARIES WERE OBTAINED FROM THE ST. LAWRENCE COUNTY WEB MAP PORTAL.
4. REYNOLDS METALS SITE REMEDIATION AREA DEFINED IN THE EXPLANATION OF SIGNIFICANT DIFFERENCES (USEPA, DECEMBER 2008).
5. GENERAL MOTORS SUPERFUND SITE REMEDIATION AREAS PROVIDED IN EXPLANATION OF SIGNIFICANT DIFFERENCES, GENERAL MOTORS CORPORATION - CENTRAL FOUNDRY DIVISION SUPERFUND SITE, MASSENA, NEW YORK. 04/26/2000.
6. MOHAWK NATION TERRITORY AT AKWESASNE BOUNDARY OBTAINED FROM THE NYS OFFICE OF INFORMATION TECHNOLOGY SERVICES GIS PROGRAM OFFICE (GPO). RESERVATION ON US SIDE UNDER JURISDICTION OF THE SAINT REGIS MOHAWK TRIBE.



GRAPHIC SCALE

MASSENA-AREA FEDERAL SUPERFUND SITES