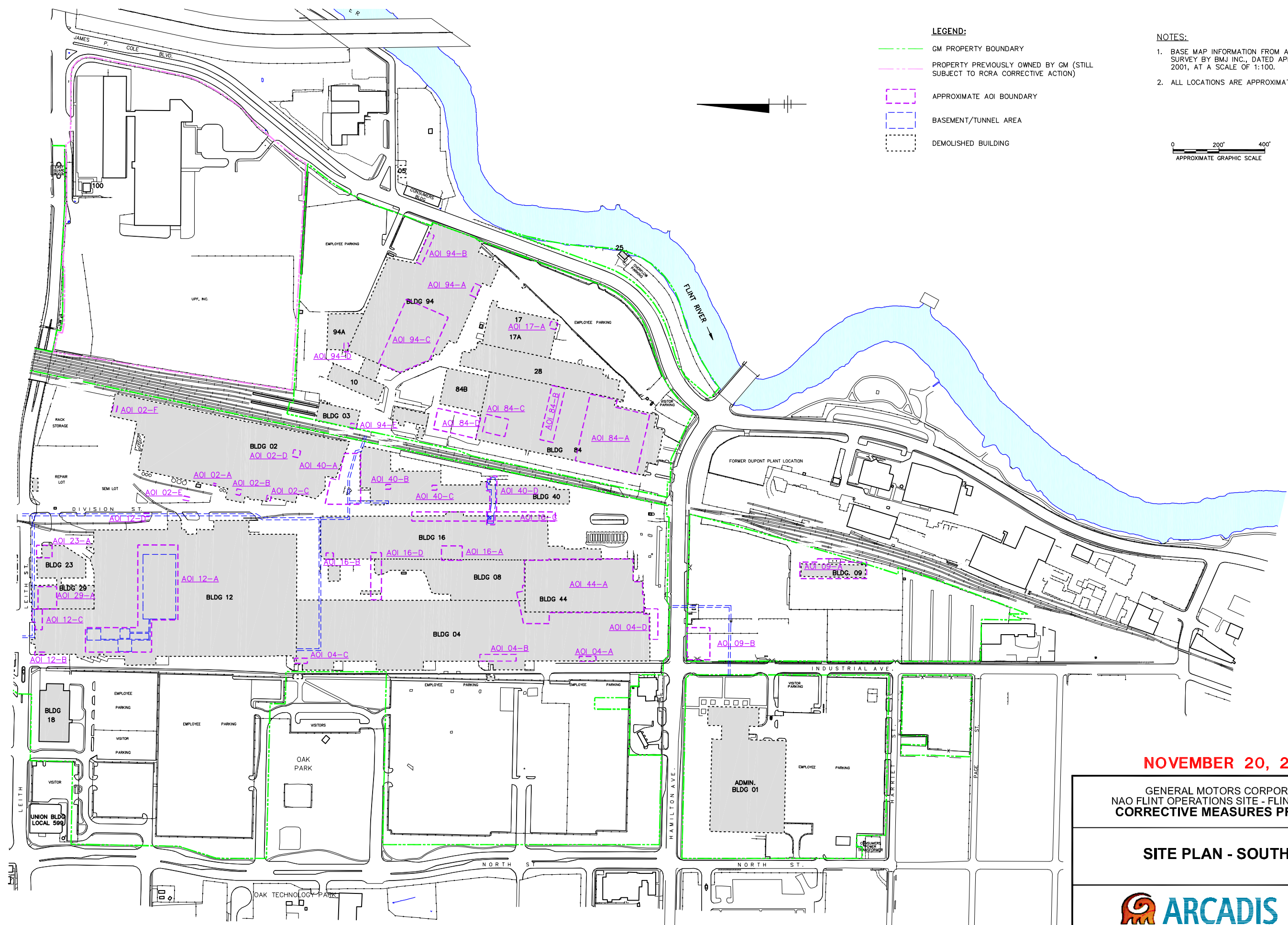


US EPA ARCHIVE DOCUMENT

CITY: SYRACUSE DIV/GRP: 141 DB: G. STOWELL, FORAKER PM: LVR: ON-OFF-REF, ISHD-BUILDING, HIST, SB
 GAENVCADSYRACUSE/ACT/1000644/1000001/05000/DWG/08-EPA/644/1001.DWG LAYOUT: 1.1 SAVER: 11/20/2009 11:26 AM
 ACADVER: 17.05 (LMS TECH) PAGES: 17.05 (LMS TECH) PLOTSTYLETABLE: PLT/LULL.CTB PLOTTED: 11/20/2009 11:26 AM BY: FORAKER, LYDIA
 XREFS: IMAGES: PROJECTNAME: 64410X01

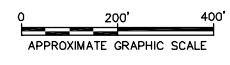


LEGEND:

- GM PROPERTY BOUNDARY
- PROPERTY PREVIOUSLY OWNED BY GM (STILL SUBJECT TO RCRA CORRECTIVE ACTION)
- APPROXIMATE AOI BOUNDARY
- BASEMENT/TUNNEL AREA
- DEMOLISHED BUILDING

NOTES:

1. BASE MAP INFORMATION FROM A SURVEY BY BMJ INC., DATED APRIL 2001, AT A SCALE OF 1:100.
2. ALL LOCATIONS ARE APPROXIMATE.



NOVEMBER 20, 2009

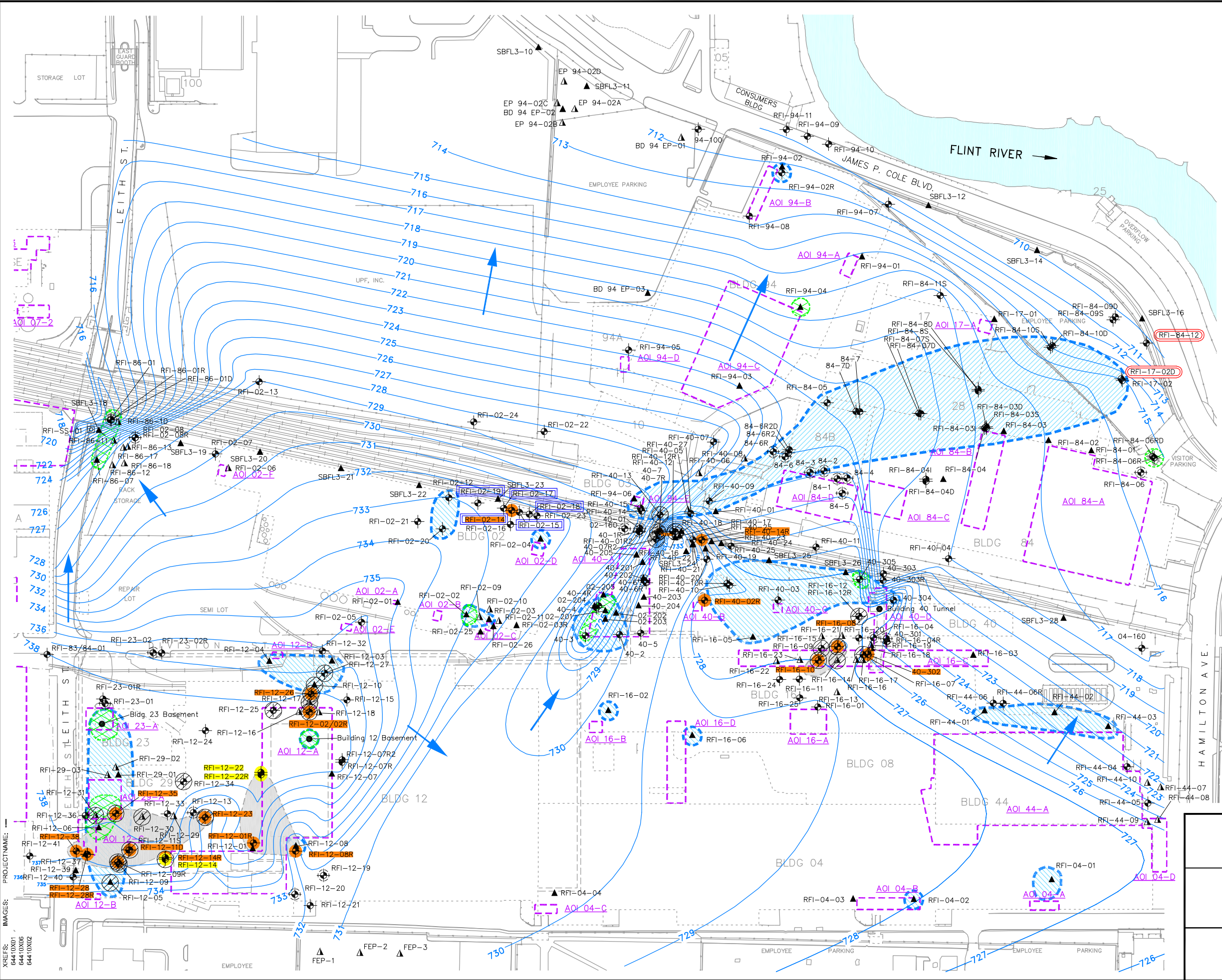
GENERAL MOTORS CORPORATION
 NAO FLINT OPERATIONS SITE - FLINT, MICHIGAN
 CORRECTIVE MEASURES PROPOSAL

SITE PLAN - SOUTHEND



FIGURE
1

CITY: SYRACUSE DIV/GRP: 141 DB: G. STOWELL, FORAKER PM: LYR: ON: OFF: REF: ISID: BUILDING: HRST: SB
 G:\ENVCAD\SYRACUSE\ACT\B00644\100000\10500\DWG\CR-EP\A644\10G03.DWG LAYOUT: 2 SAVER: 1/20/2009 11:27 AM ACADVER: 17.05 (MS TECH) PAGES: 17 PLOT: 1/20/2009 11:27 AM BY: FORAKER, LYDIA

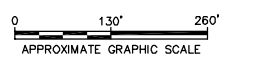


LEGEND:

- GM PROPERTY BOUNDARY
- APPROXIMATE AOI BOUNDARY
- BASEMENT/TUNNEL AREA
- DEMOLISHED BUILDING
- ESTIMATED LIMITS OF MEASURABLE LNAPL
- ESTIMATED AREA WHERE VOCs AND/OR SVOCs EXCEED MICHIGAN PART 201 GENERIC INDUSTRIAL SCREENING CRITERIA IN GROUNDWATER (THROUGH SEPTEMBER 23, 2005)
- ESTIMATED AREA WHERE INORGANICS EXCEED MICHIGAN PART 201 GENERIC INDUSTRIAL SCREENING CRITERIA IN GROUNDWATER (THROUGH SEPTEMBER 23, 2005)
- HISTORICAL MONITORING WELL
- DECOMMISSIONED/DESTROYED MONITORING WELL
- RECOVERY WELL
- PIEZOMETER LOCATION
- RFI SOIL BORING/GRAB GROUNDWATER SAMPLE LOCATION
- RFI SOIL BORING LOCATION
- LOCATION WHERE MEASURABLE LNAPL WAS HISTORICALLY DETECTED (BEFORE MARCH 2004)
- LOCATION WHERE MEASURABLE LNAPL WAS DETECTED FROM MARCH 2004 TO JULY 2005
- LOCATION WHERE EVIDENCE OF LNAPL WAS OBSERVED IN SOIL
- WELL INCLUDED IN CMP GROUNDWATER MONITORING PROGRAM (GROUNDWATER SAMPLE COLLECTION FOR VOCs ANALYSES AND GROUNDWATER AND/OR LNAPL ELEVATION MEASUREMENT)
- LNAPL MONITORING LOCATION ONLY
- GENERALIZED GROUNDWATER FLOW DIRECTION
- OCTOBER 2007 GROUNDWATER ELEVATION CONTOUR (IN FEET)

NOTES:

1. BASE MAP INFORMATION FROM A SURVEY BY BMJ INC., DATED APRIL 2001, AT A SCALE OF 1:100.
2. ALL LOCATIONS ARE APPROXIMATE.
3. ESTIMATED LIMITS OF MEASURABLE LNAPL BASED ON MEASUREMENTS FROM MARCH 2004 TO JULY 2005.



NOVEMBER 20, 2009

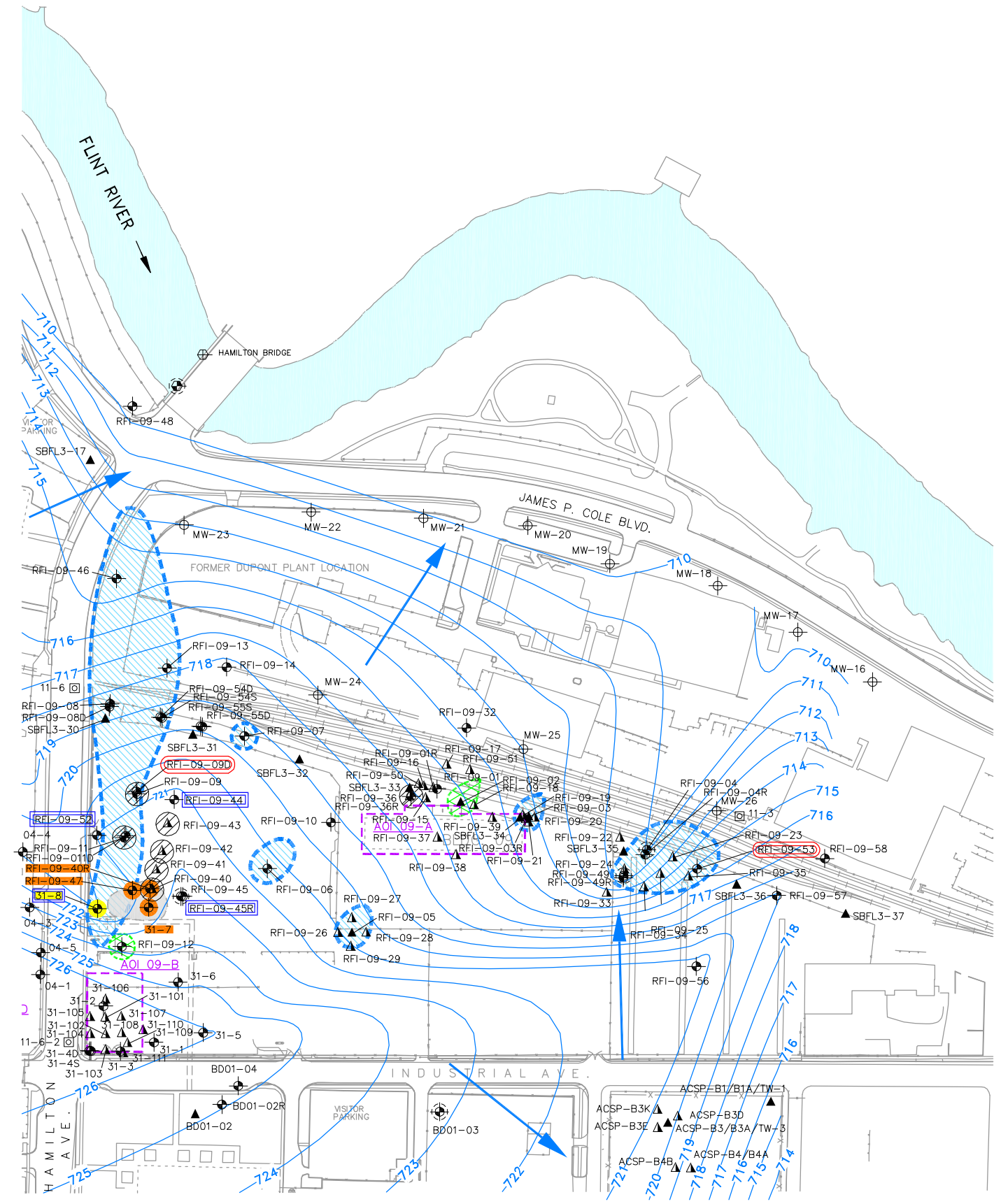
GENERAL MOTORS CORPORATION
 NAO FLINT OPERATIONS SITE - FLINT, MICHIGAN
CORRECTIVE MEASURES PROPOSAL

**GROUNDWATER MONITORING
 LOCATIONS - SOUTHEND
 NORTH OF HAMILTON AVENUE**



CITY: SYRACUSE DIV/GRP: 141 DB: G. STOWELL, FORAKER PM: LVR: ON: OFF=REF+ ISID: BUILDING, HRST: SB
 GA: ENCAD: SYRACUSE/ACT: 1000644100000105000/DWG: 09-EP: A64410G04.DWG LAYOUT: 3 SAVED: 11/20/2009 11:41 AM
 ACADVER: 17.0S (LMS TECH) PAGES: 17.0S (LMS TECH) PLOTSTYLE: PLT: LULL.CTB PLOT: 11/20/2009 11:41 AM BY: FORAKER, LYDIA

PROJECTNAME: -
 XREFS: 6441DX01
 6441DX06
 6441DX02

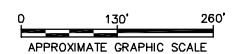


LEGEND:

- GM PROPERTY BOUNDARY
- APPROXIMATE AOI BOUNDARY
- BASEMENT/TUNNEL AREA
- DEMOLISHED BUILDING
- ESTIMATED LIMITS OF MEASURABLE LNAPL
- ESTIMATED AREA WHERE VOCs AND/OR SVOCs EXCEED MICHIGAN PART 201 GENERIC INDUSTRIAL SCREENING CRITERIA IN GROUNDWATER (THROUGH SEPTEMBER 23, 2005)
- ESTIMATED AREA WHERE INORGANICS EXCEED MICHIGAN PART 201 GENERIC INDUSTRIAL SCREENING CRITERIA IN GROUNDWATER (THROUGH SEPTEMBER 23, 2005)
- HISTORICAL MONITORING WELL
- DECOMMISSIONED/DESTROYED MONITORING WELL
- RECOVERY WELL
- PIEZOMETER LOCATION
- RFI SOIL BORING/GRAB GROUNDWATER SAMPLE LOCATION
- RFI SOIL BORING LOCATION
- LOCATION WHERE MEASURABLE LNAPL WAS HISTORICALLY DETECTED (BEFORE MARCH 2004)
- LOCATION WHERE MEASURABLE LNAPL WAS DETECTED FROM MARCH 2004 TO JULY 2005
- LOCATION WHERE EVIDENCE OF LNAPL WAS OBSERVED IN SOIL
- WELL INCLUDED IN CMP GROUNDWATER MONITORING PROGRAM (GROUNDWATER SAMPLE COLLECTION FOR VOCs ANALYSES AND GROUNDWATER AND/OR LNAPL ELEVATION MEASUREMENT)
- LNAPL MONITORING LOCATION ONLY
- GENERALIZED GROUNDWATER FLOW DIRECTION
- 726 OCTOBER 2007 GROUNDWATER ELEVATION CONTOUR (IN FEET)

NOTES:

1. BASE MAP INFORMATION FROM A SURVEY BY BMJ INC., DATED APRIL 2001, AT A SCALE OF 1:100.
2. ALL LOCATIONS ARE APPROXIMATE.
3. ESTIMATED LIMITS OF MEASURABLE LNAPL BASED ON MEASUREMENTS FROM MARCH 2004 TO JULY 2005.



NOVEMBER 20, 2009

**GENERAL MOTORS CORPORATION
 NAO FLINT OPERATIONS SITE - FLINT, MICHIGAN
 CORRECTIVE MEASURES PROPOSAL**

**GROUNDWATER MONITORING
 LOCATIONS - SOUTHEND
 SOUTH OF HAMILTON AVENUE**



FIGURE
3