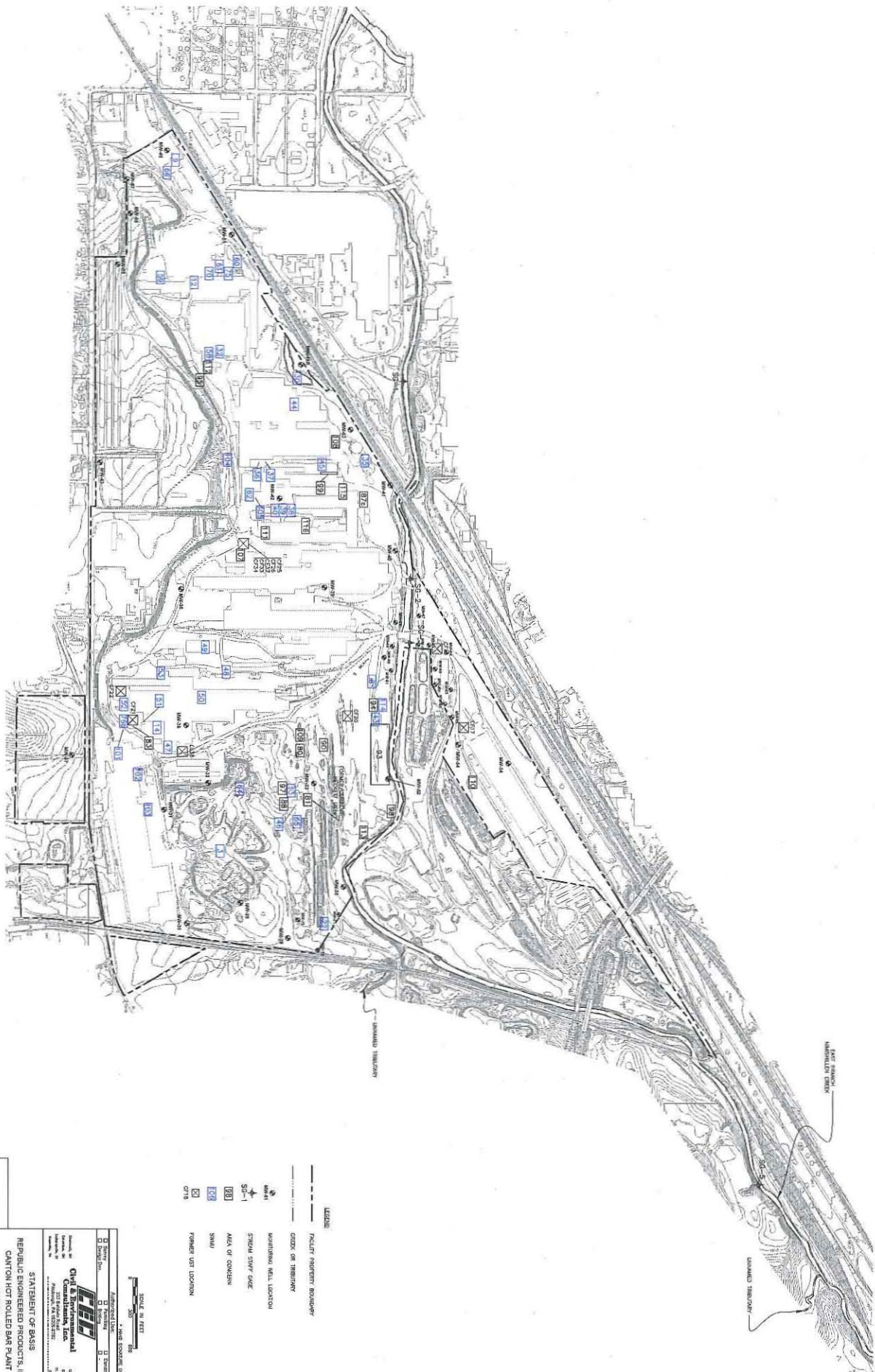


US EPA ARCHIVE DOCUMENT

FIGURES



SUBMITTA RECORD	
NO. DATE	DESCRIPTION
NO. DATE	REVISION RECORD
NO. DATE	EXPLANATION

- LEGEND**
- FACILITY PROPERTY BOUNDARY
  - CREEK ON TRIBUTARY
  - MONITORING WELL LOCATION
  - STEAM STEEP GAGE
  - AREA OF CONDENSE
  - SWAMP
  - PUMPED WASTEWATER

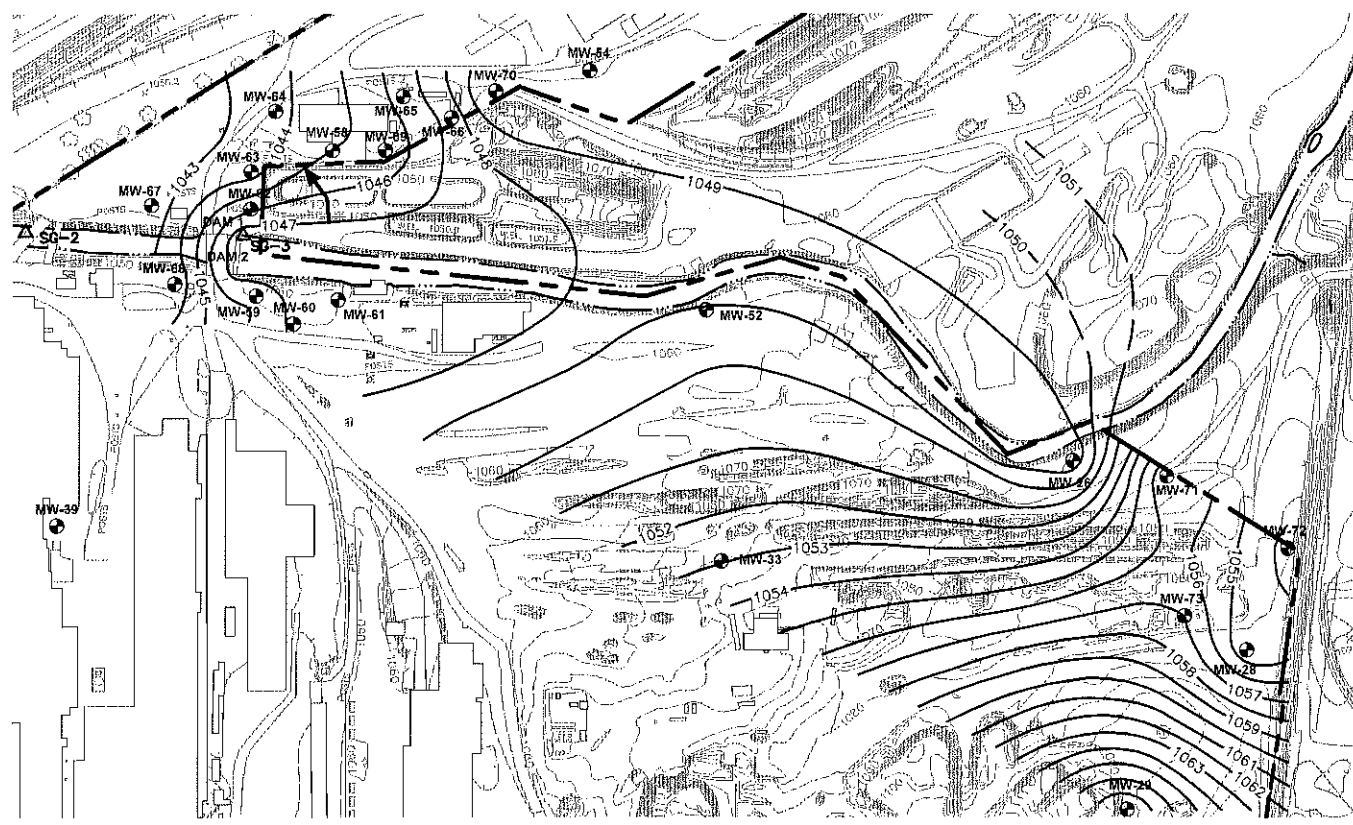
SCALE IN FEET  
1" = 200'

**CH2M HILL**  
**Environmental**  
 2110 East 12th Street  
 Canton, Ohio 44705  
 (614) 845-1000  
 FAX (614) 845-1001  
 www.ch2mhill.com

STATEMENT OF BASIS  
 REPUBLIC ENGINEERED PRODUCTS, INC.  
 CANTON HOT ROLLED BAR PLANT  
 CANTON, OHIO

DATE: 05/20/2003  
 SHEET NO. 1  
 OF 1  
 LOCATION MAP

G:\PROJECTS\2002\221611\0025\DWG\STATEMENT OF BASIS\FIGURE 21.DWG(FIGURE 2) (DOUBLE) - APR 19, 2011 - 16:42:29



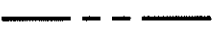




GROUNDWATER CONDITIONS

THE WATER LEVELS PRESENTED HEREIN ARE APPLICABLE TO THE LOCATION AND TIME OF MEASUREMENT. WATER LEVELS MAY FLUCTUATE THROUGH TIME.

POTENTIOMETRIC CONTOURS GENERATED FROM THIS DATA ARE CONSTRUCTED BY INTERPOLATION BETWEEN POINTS OF KNOWN STATIC WATER LEVEL ELEVATIONS AND USING KNOWLEDGE OF SPECIFIC SITE CONDITIONS. ACTUAL STATIC WATER LEVELS AT LOCATIONS BETWEEN THE MONITORING POINTS MAY DIFFER FROM THOSE DEPICTED.

LEGEND

-  MW-51 TEMPORARY WELL LOCATION
-  SG-1 STREAM STAFF GAGE
-  FACILITY PROPERTY BOUNDARY
-  GROUNDWATER FLOW DIRECTION
-  GROUNDWATER ELEVATION

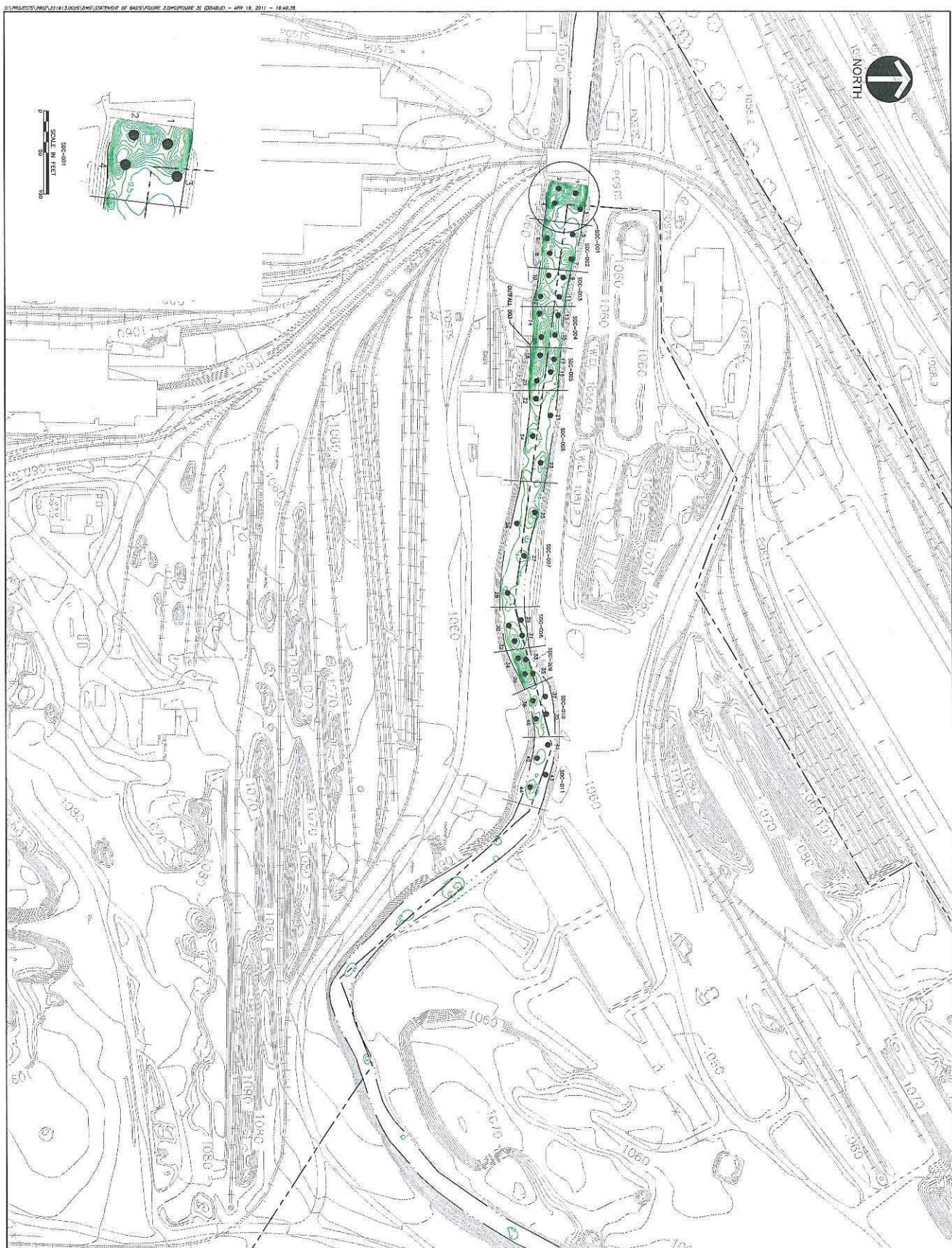
\* HAND SIGNATURE ON FILE



**C&E**  
**Civil & Environmental Consultants, Inc.**  
 Cincinnati, OH  
 Columbus, OH  
 Indianapolis, IN  
 Nashville, TN  
 333 Baldwin Road, Pittsburgh, PA 15205-9702  
 (412) 428-2324 • (800) 365-2324  
 Chicago, IL  
 Export, PA  
 St. Louis, MO  
 Detroit, MI

GROUNDWATER CONTOUR MAP 2007 INVESTIGATION  
STATEMENT OF BASIS  
REPUBLIC ENGINEERED PRODUCTS, INC.  
CANTON HOT ROLLED BAR PLANT  
CANTON, OHIO

QUALITY MANAGER APPROVAL:	* TLM	PROJECT NO:	221-613.0025	FIGURE NO:	
DRAWN BY:	SPS	CHKD BY:	TLM	DWG SCALE:	1"=300'
		LAST EDIT DATE:	10/6/2007	2	



SUBMITTAL RECORD	
NO.	DATE
REVISION RECORD	
NO.	DATE

**SEDIMENT CONDITIONS**  
 DATA PRESENTED IN THIS REPORT ARE APPROPRIATE TO THE LOCATION, TIME OF SAMPLE COLLECTION, AND THE PARAMETERS ANALYZED. CONDITIONS MAY VARY OVER TIME AND SPACE. THESE DATA DO NOT REPRESENT CURRENT OR FUTURE CONDITIONS. DATA GENERATED FROM THIS DATA ARE CONSIDERED BY INTERPOLATION BETWEEN POINTS. SPECIFIC SITE CONDITIONS BETWEEN THESE SAMPLING POINTS MAY DIFFER.

SEDIMENT NO.	ESTIMATED VALUE (CUBIC YARD)
1	660
2	397
3	368
4	379
5	353
6	651
7	514
8	115
9	113
10	292
11	46

**LEGEND**  
 - - - FACILITY PROPERTY BOUNDARY  
 --- GREEN ON TRIANGLE  
 - - - SLOPING THICKNESS  
 - - - PERMANENT LOTION  
 - - - SEDIMENT SAMPLE

SCALE IN FEET  
 0 100 200  
 1" = 100'

STATEMENT OF BASIS  
 REPUBLIC SERVICES, INC.  
 CANTON/HOT ROLLER BAR PLANT  
 CANTON, OHIO

**Civil & Environmental Consultants, Inc.**  
 10000 North State Road, Suite 100  
 Cincinnati, OH 45241-1000  
 Phone: (513) 633-0300  
 Fax: (513) 633-0302  
 E-Mail: info@civilenvironmental.com  
 Website: www.civilenvironmental.com

DATE: 09/08/07  
 DRAWN BY: JRM  
 CHECKED BY: JRM  
 SCALE: 1" = 100'  
 SHEET NO. 3  
 TOTAL SHEETS: 3  
 PROJECT NO. 21113002  
 TITLE: TYPICAL LOCATIONS  
 DATE: SEPTEMBER 2007