

US EPA ARCHIVE DOCUMENT



Memo to File February 22, 2011

From Carolyn Bury, CAS2 Ecologist *Carolyn Bury*

Subject: Abbreviated Screening Level Ecological Risk Assessment

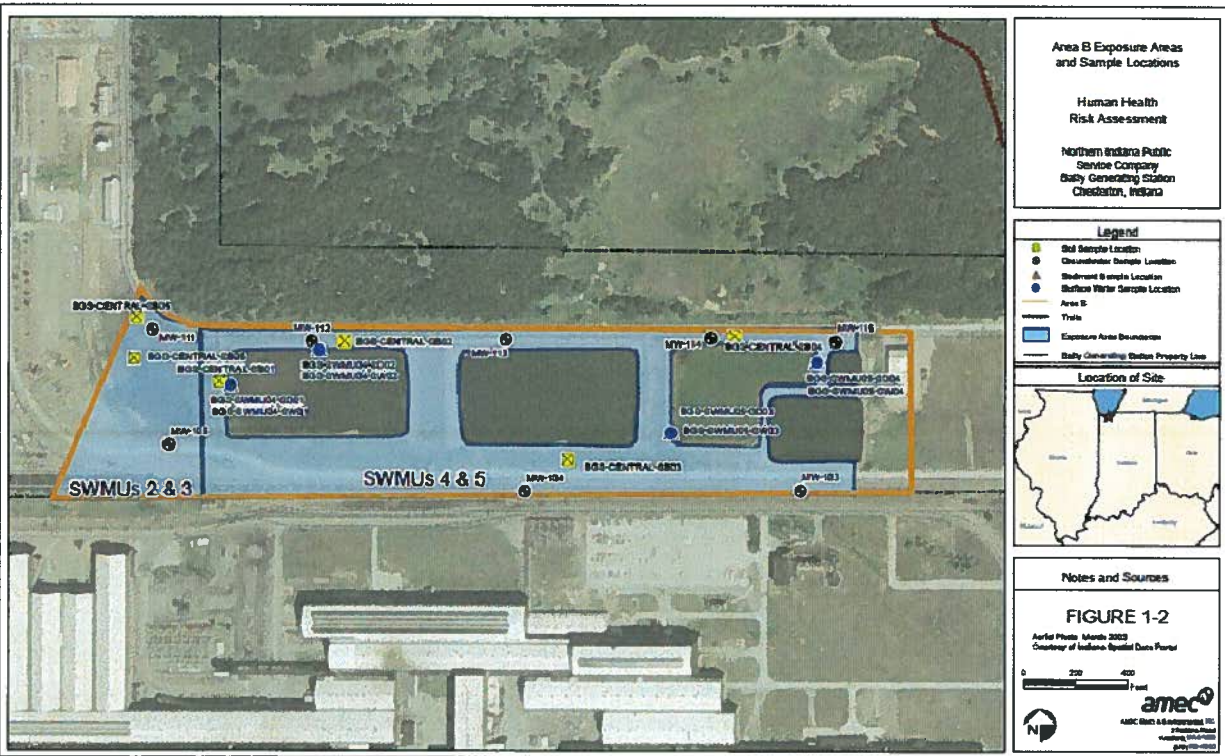
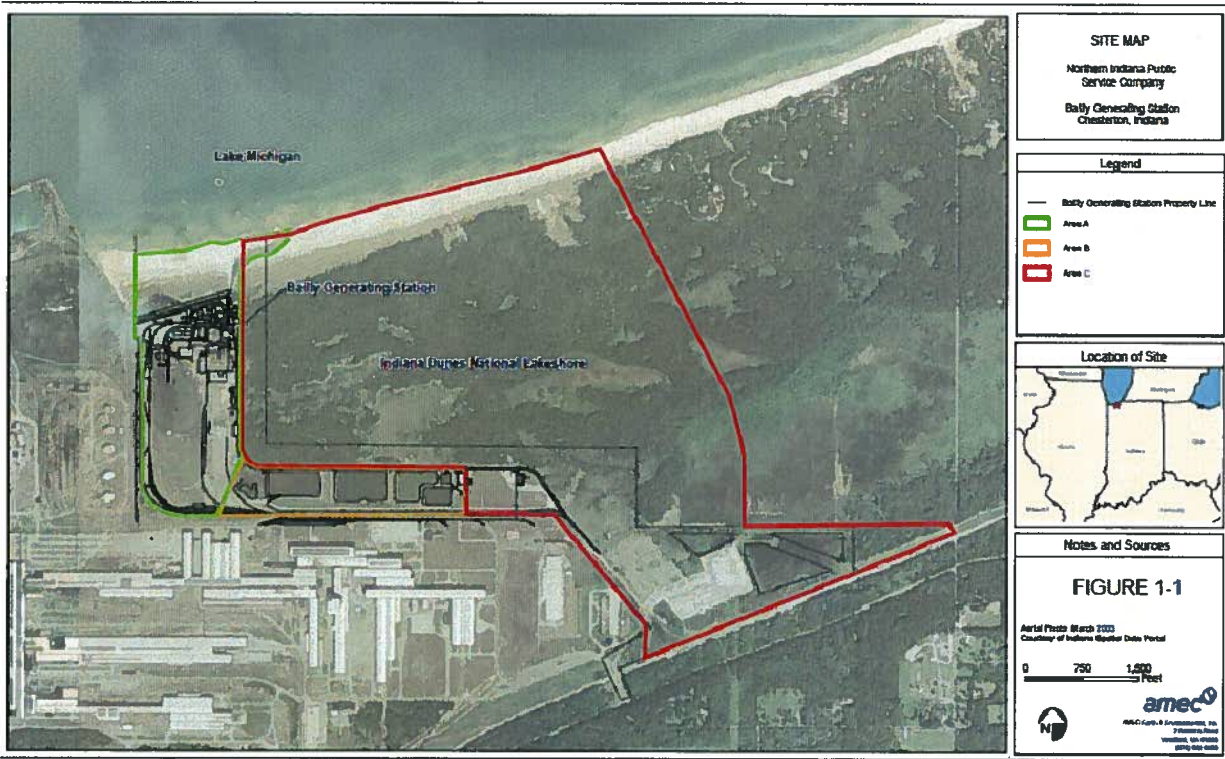
Northern Indiana Public Service Company, Bailey Generating Station, **Area B** (see attached figures)

EPA ID # IND 000 718 114, Docket # RCRA-05-2005-0005

The landscape of Area B is dominated by four fly-ash ponds, a busy access road, berms and a fence. The limited habitat present is highly disturbed and of low quality. While Area B is directly adjacent to the Buffer Zone and Indiana Dunes National Lakeshore to the north, it is built on fill and significantly elevated above these areas and separated by a fence. To the south is a steel mill (currently Arcelor Mittal). Area B is separated from the steel mill by train tracks.

Between 2006 and 2009 I completed four field visits to this Site and did not observe wildlife/waterfowl use in Area B. However, incidental use by waterfowl is expected and this area is also likely a travel corridor for deer, coyotes, and other species. Therefore, while occasional complete exposure pathways to occasional receptors are probable, the exposures are not considered to be significant.

Because Area B is part of the facility's operations and contains only highly degraded habitat, the area should be eliminated from further ecological risk assessment.



Figures from Draft Human Health Risk Assessment, NIPSCO Baily Generating Station: Area B, Chesterton, Indiana, March 29, 2010