

US EPA ARCHIVE DOCUMENT



Status of Ansul Clean-Up and Alternative River Proposal Submitted to EPA Dec, 2010

CAC Meeting
April 27, 2011

By
Gary Cygan
EPA, Region 5, Chicago
&
With assistance from WDNR

Where Clean-Up Is Today

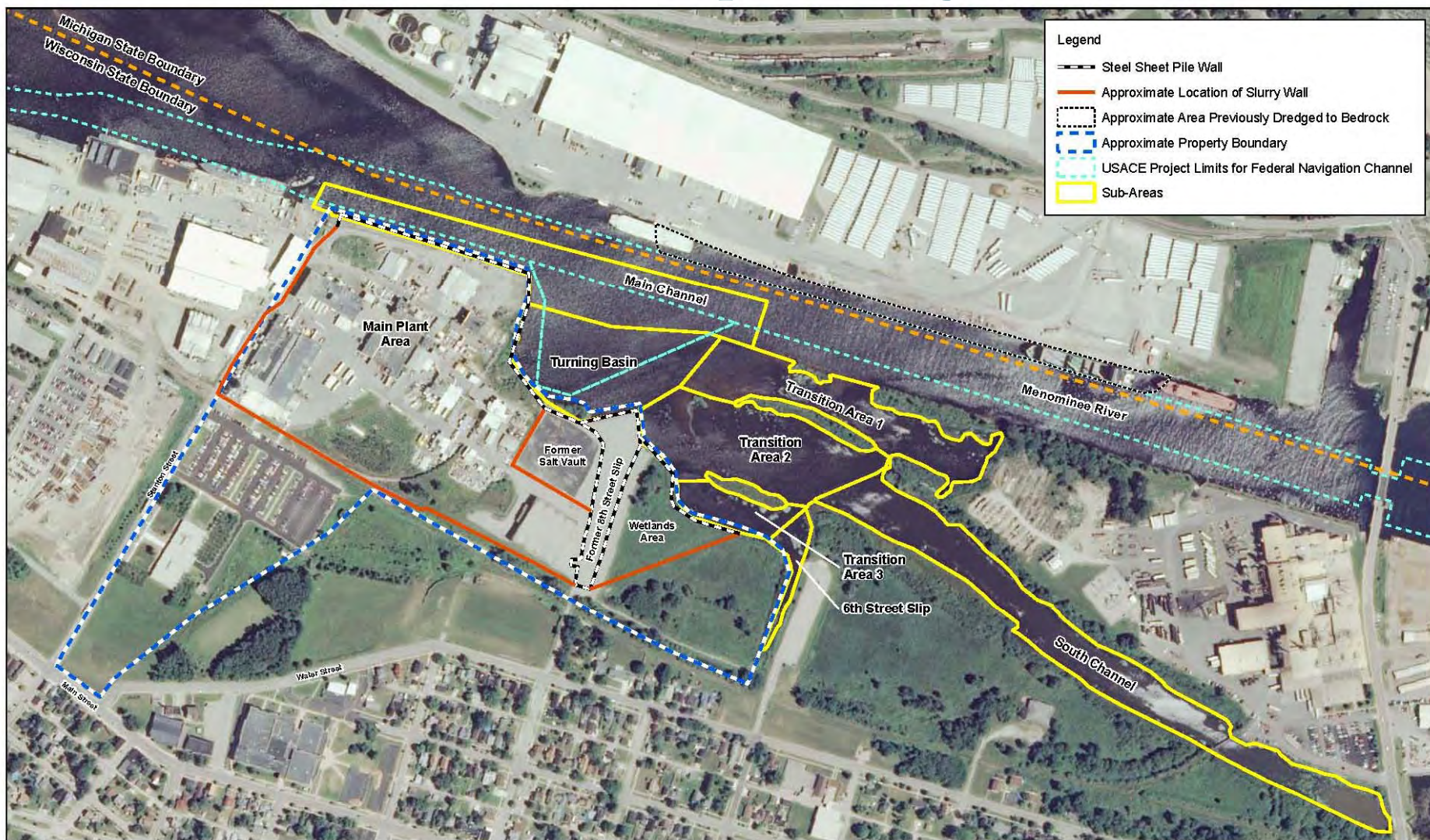


Figure 1
Site Map
Tyco Fire Products LP Facility
Marinette, WI

Maximum Arsenic in Soft Sediment



Figure 2
Maximum Arsenic Concentration in Soft Sediment
Tyco Fire Products LP Facility
Marinette, WI

Maximum Arsenic in Semi-Consolidated Sands and Silts



Figure 3
Maximum Arsenic Concentration in
Semi-consolidated Sands and Silts
Typo Fine Products LP Facility
Marionville, WI

Soft Sediment Thickness

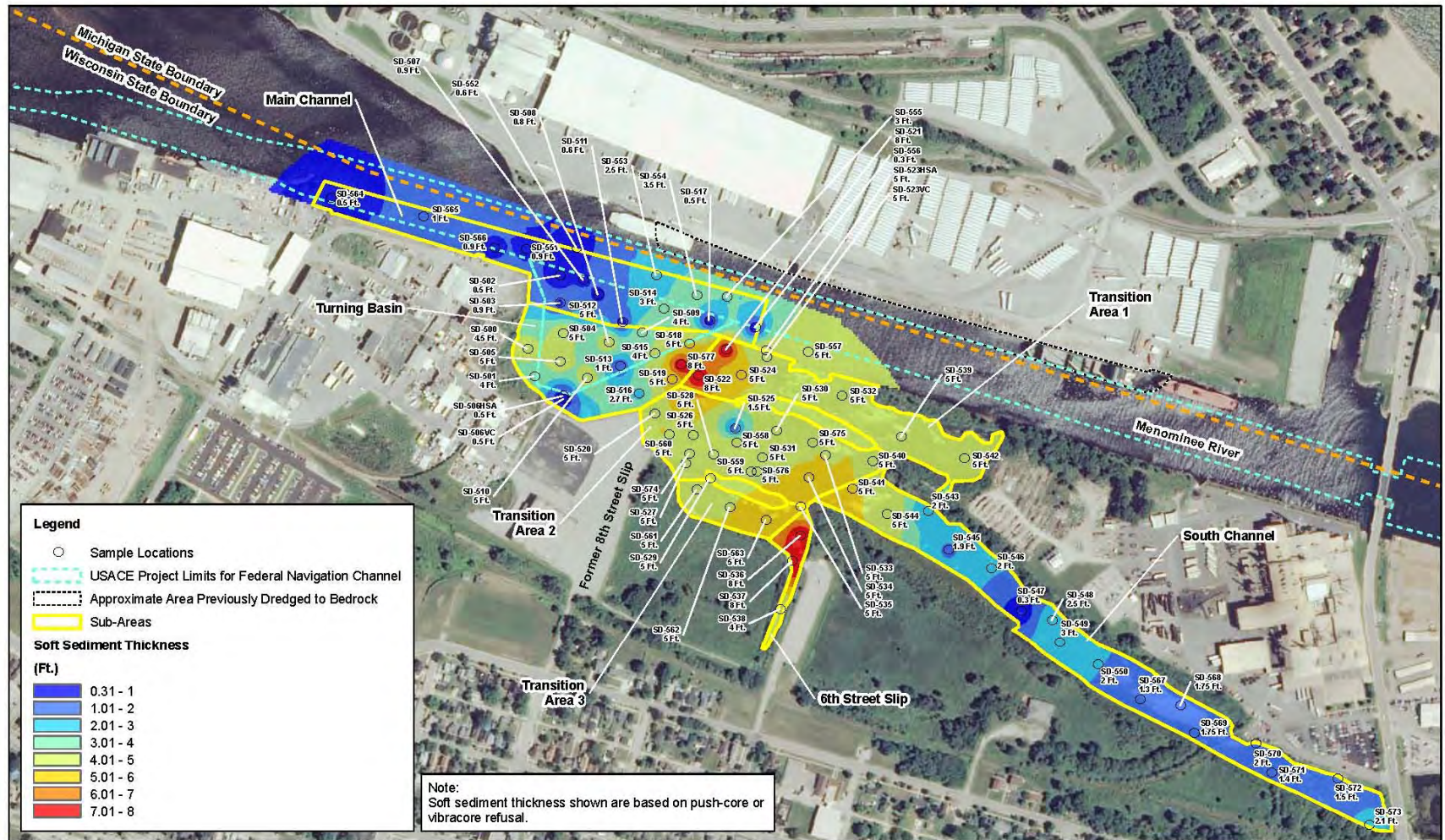


Figure 4
Thickness of Soft Sediment
Tyco Fire Products LP Facility
Marquette, WI

Semi-Consolidated Sediment Thickness

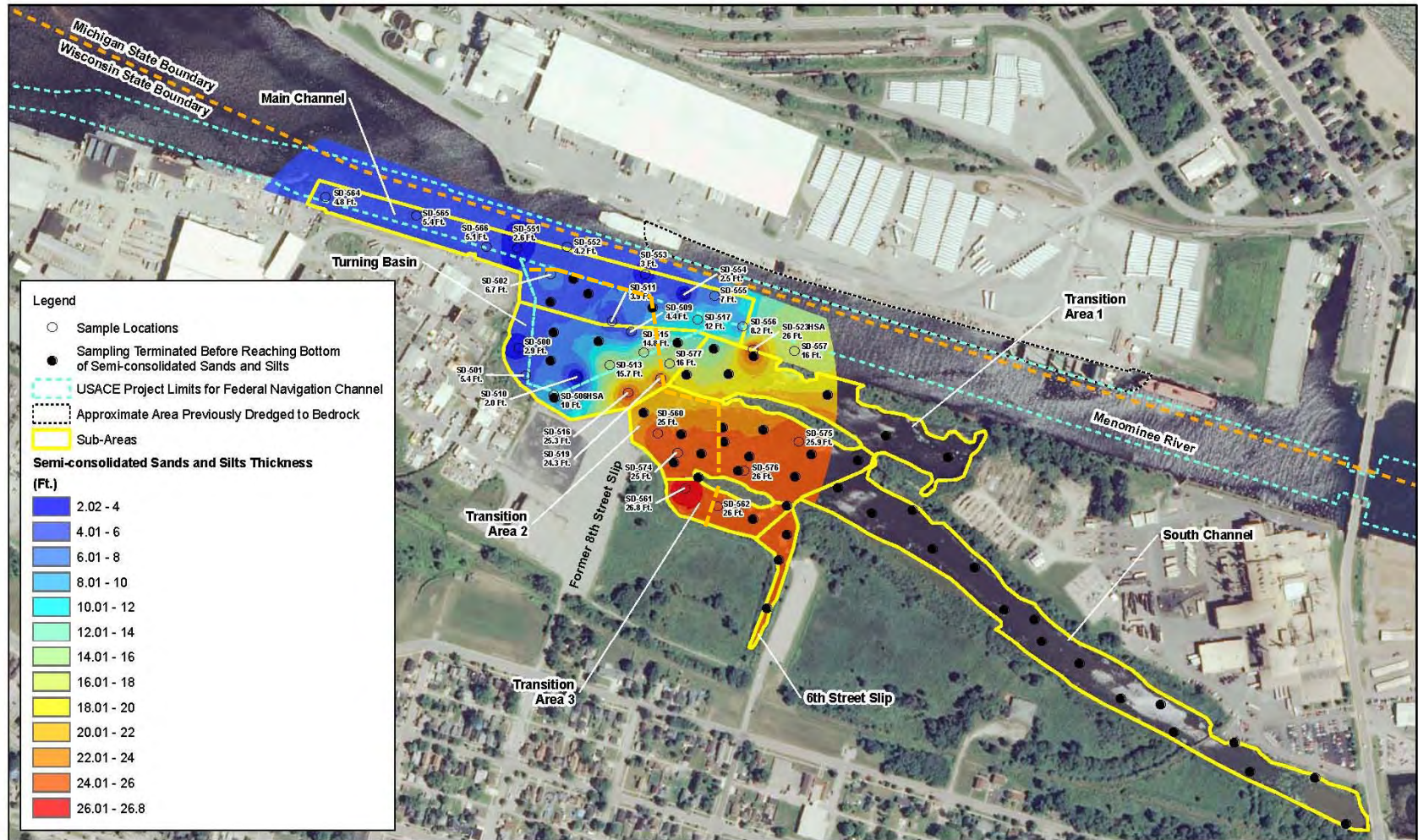
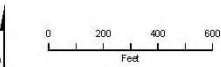
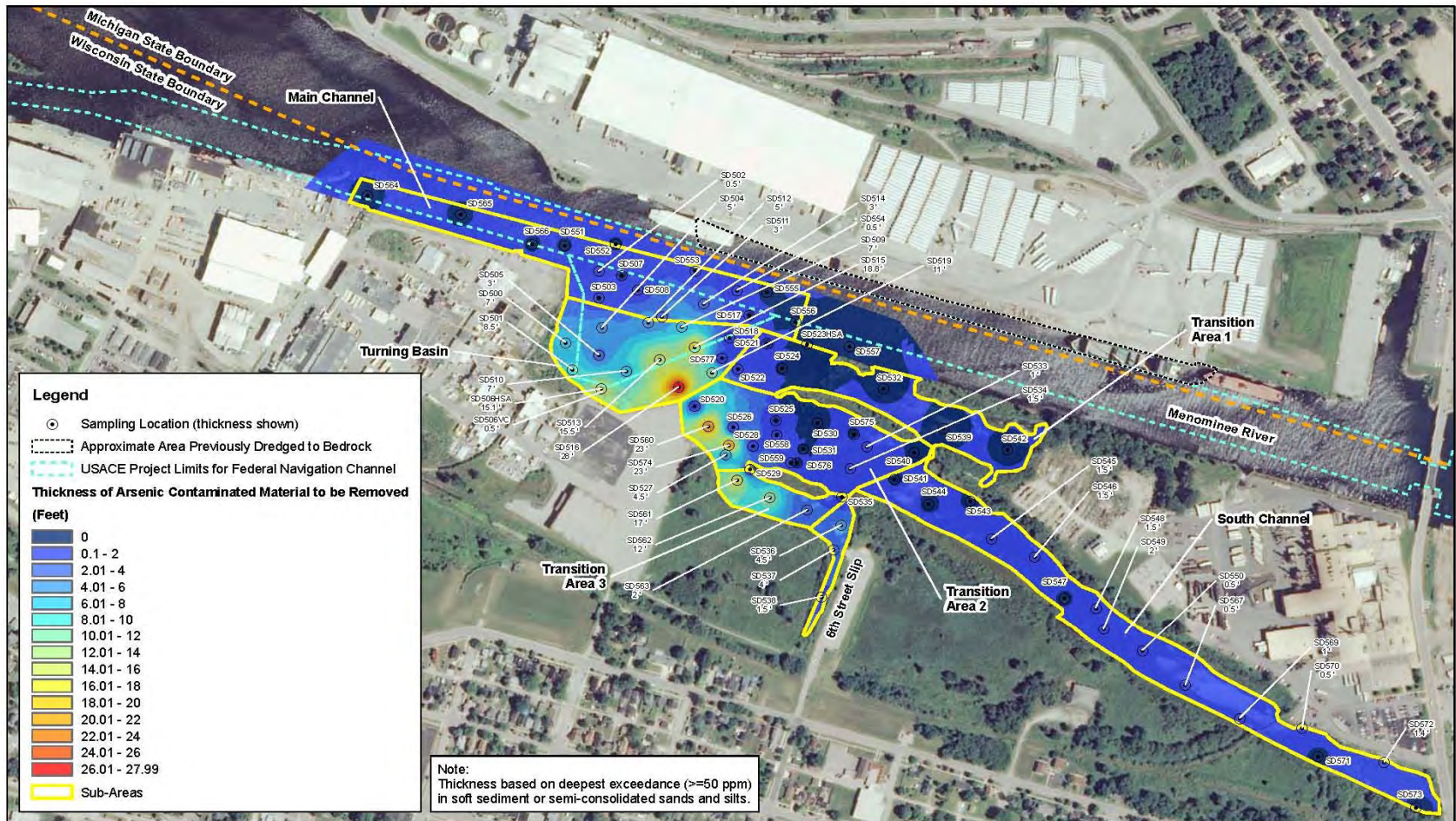


Figure 5
Thickness of Semi-consolidated Sands and Silts
Tyco Fire Products LP Facility
Marquette, WI



\\LAREFRONT\PROJECTS\COM\APPLIES\SRMP_11192010\05_TYCO_SITE_SEMICONCONSOLIDATEDSANDSANDSILTS_2010.MXD MPETERSH 11/30/2010 12:25:38

Total Sediment Thickness to be Removed Per Order



\\C:\FRONT\PROJ\TYCO\MAPFILES\SRVP_11192010\16_TYCO_SITE_TOTAL THICKNESS OF ARSENIC CONTAMINATED MATERIAL TO BE REMOVED.MXD MPETER SH 11/30/2010 13:11:57

CH2MHILL

Facts

- There are 225,000 cubic yards of contaminated sediment with more than 50 ppm arsenic in the river (\approx 100 tons) that are required to be removed per EPA's Final Decision (May, 2008).
- Some form of sediment removal will start in 2012; EPA's Order (Feb, 2009) requires all river work to be completed by November, 2013.
- The turning basin is part of the Federal navigation channel mandated by Congress to be 21 feet deep.
- EPA is trying to balance short vs. long-term impacts to the river while keeping present and future uses in mind (navigation, recreation, environmental health, and drinking water protection).
- Partial restricted user access to turning basin and river during 2012-13 work.

Alternative Work Plan Proposes...

- To remove only upper 1/3 of sediments ($\approx 75,000$ cyds)
- Put a 1 foot thick sand “cap” over remaining 2/3 of contaminated sediment ($\approx 150,000$ cyds)
- Put a 3 foot thick sand “cap” over contaminated sediment in Turning Basin
- To maintain anchoring restrictions forever
- To monitor & maintain “cap” integrity forever
- Will not remove contaminated sediment near wall ($\approx 5,000$ cyds)

Cross-Section of Proposed Turning Basin Depths

Alternative Scenario: 3-foot armored cap placed over contaminated semi-consolidated sands and silts.

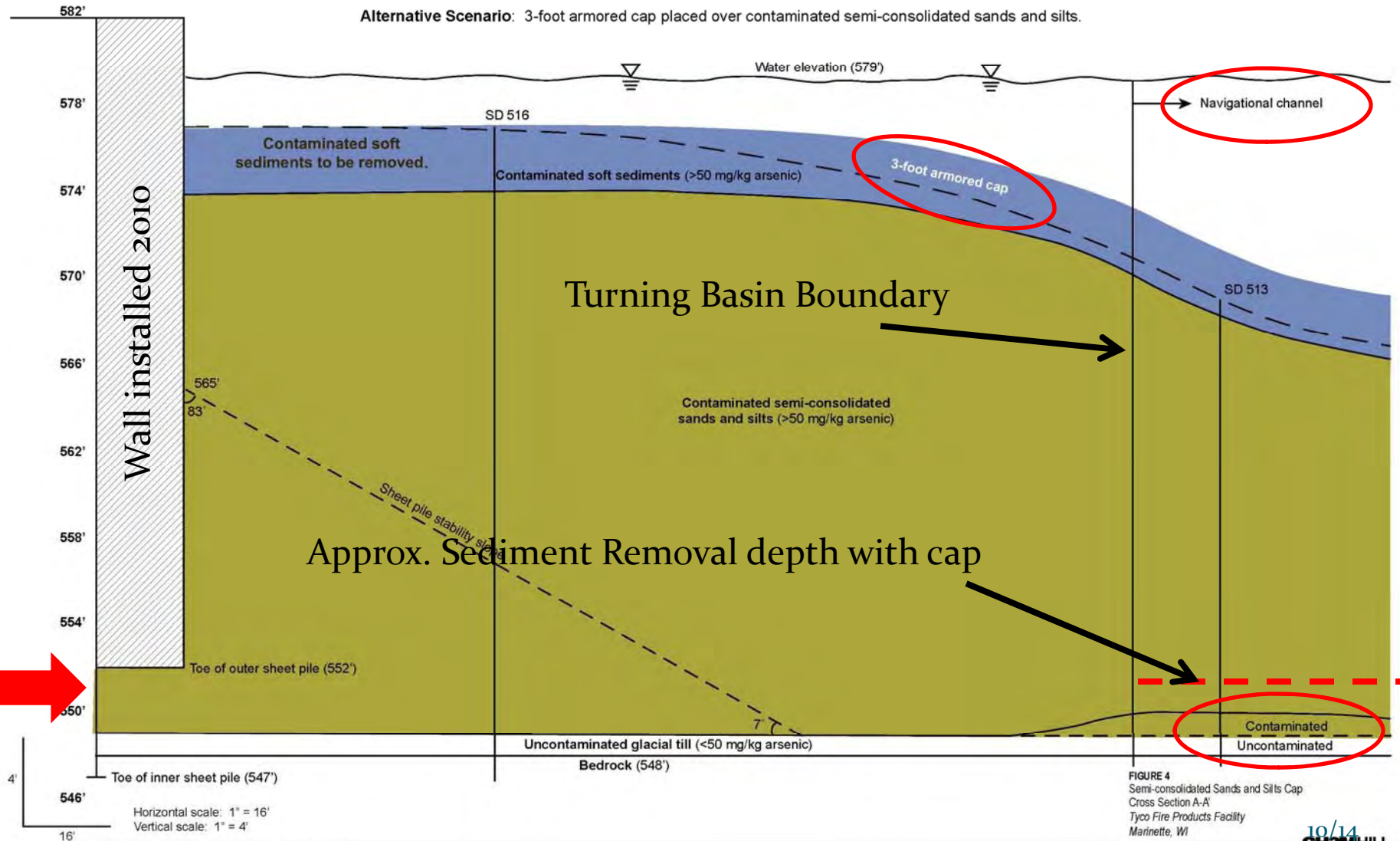


FIGURE 4
Semi-consolidated Sands and Silts Cap
Cross Section A-A'
Tyco Fire Products Facility
Marinette, WI

Depth to top of Cap over Semi-Consolidated Sediment

Federally Mandated
Area of Turning Basin

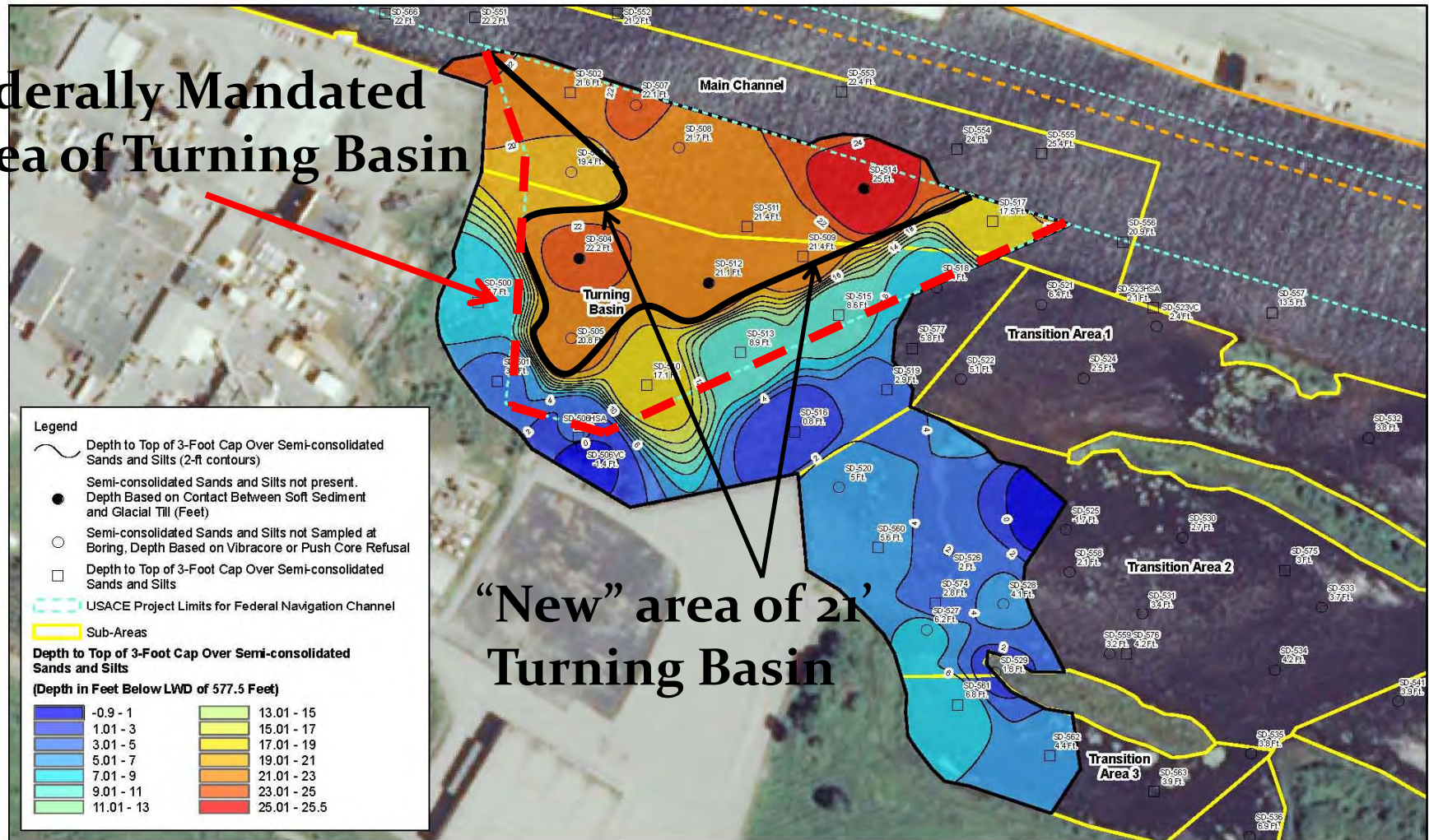


Figure 4
Depth to Top of 3-Foot Cap Over
Semi-consolidated Sands and Silts
2010 Investigation Area
Tyco Fire Products LP Facility
Marquette, WI

Some Potential Impacts to the Community From the Alternative Work Plan

- Permanent reduction of navigation depths in Turning Basin
- Long-term release of arsenic to environment
- Permanent anchoring and dredging restrictions in Turning Basin and river
- Elimination of ecology on the river bottom
- Long-term Surface water/Drinking Water impacts to Lake Michigan

What's To Come...

- Currently EPA is continuing to gather facts by consulting with the community, experts and other government agencies
- EPA will issue a response to Tyco by end of **May**



Questions?

or

Alternatively, you may contact me with any additional clarifying questions or concerns.....

I may be contacted at:

cygan.gary@epa.gov