

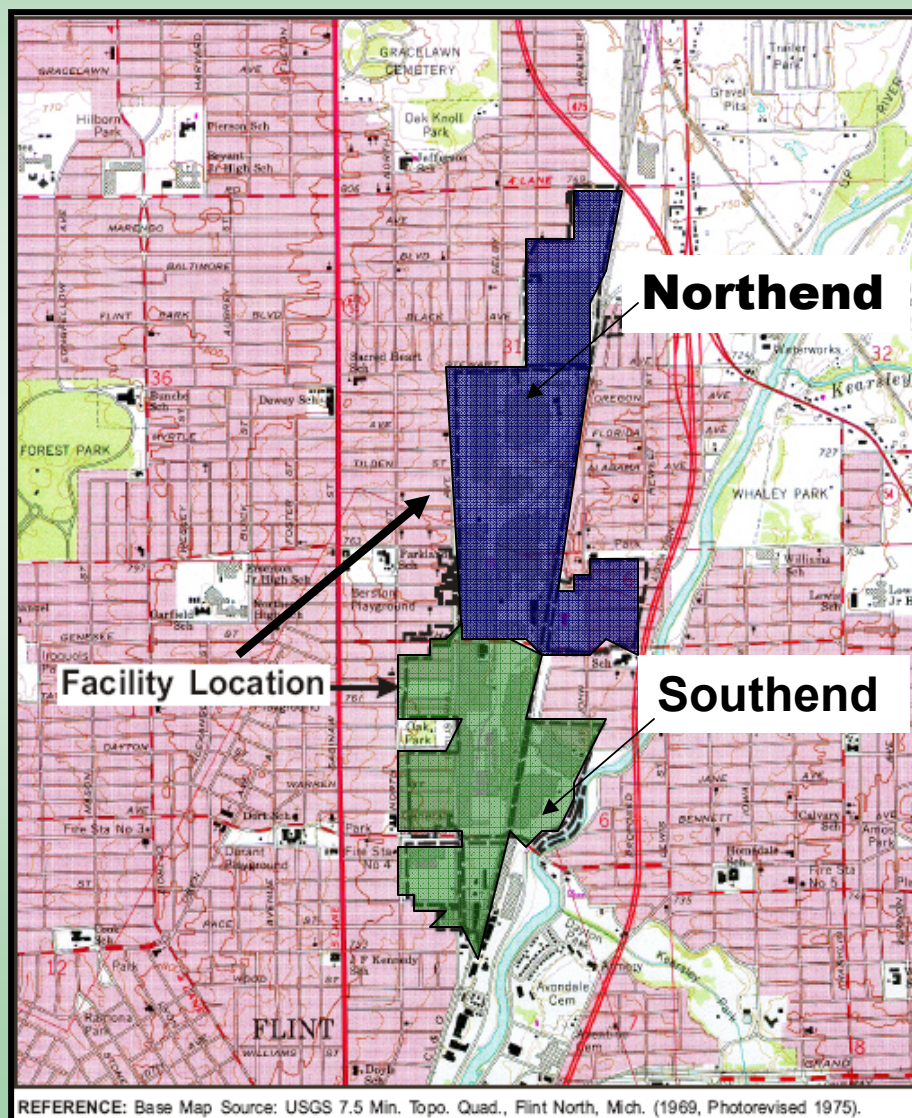
US EPA ARCHIVE DOCUMENT

GM-Flint Buick City

Southend Summary and Northend Introduction

Presented by EPA Region 5

Site Location



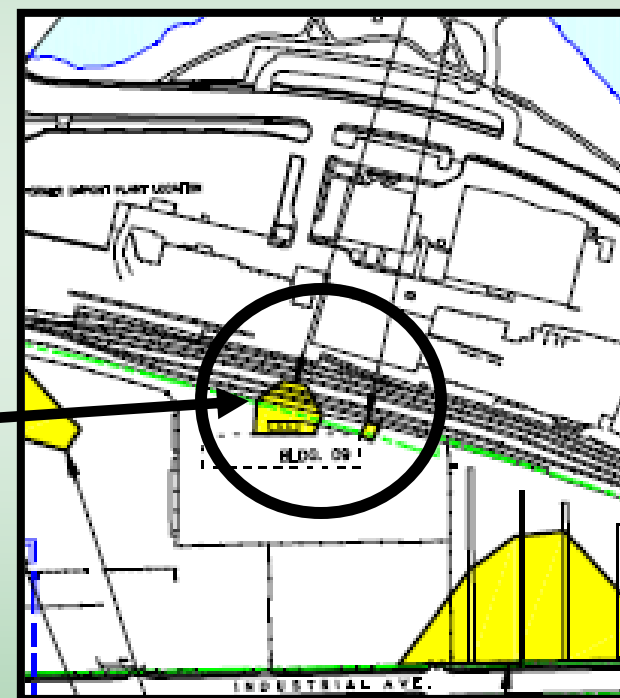
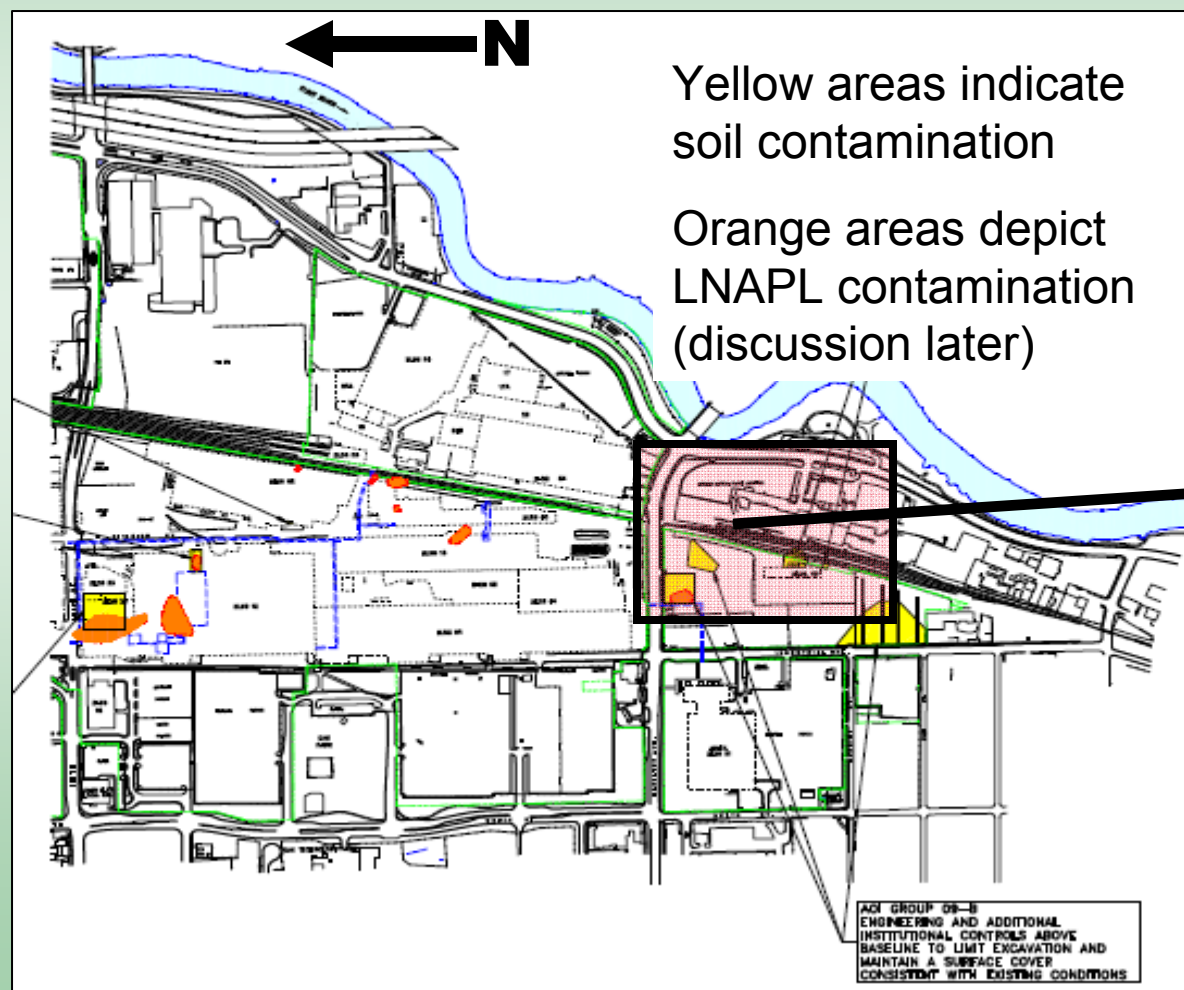
Review of Southend



Soil Remedy

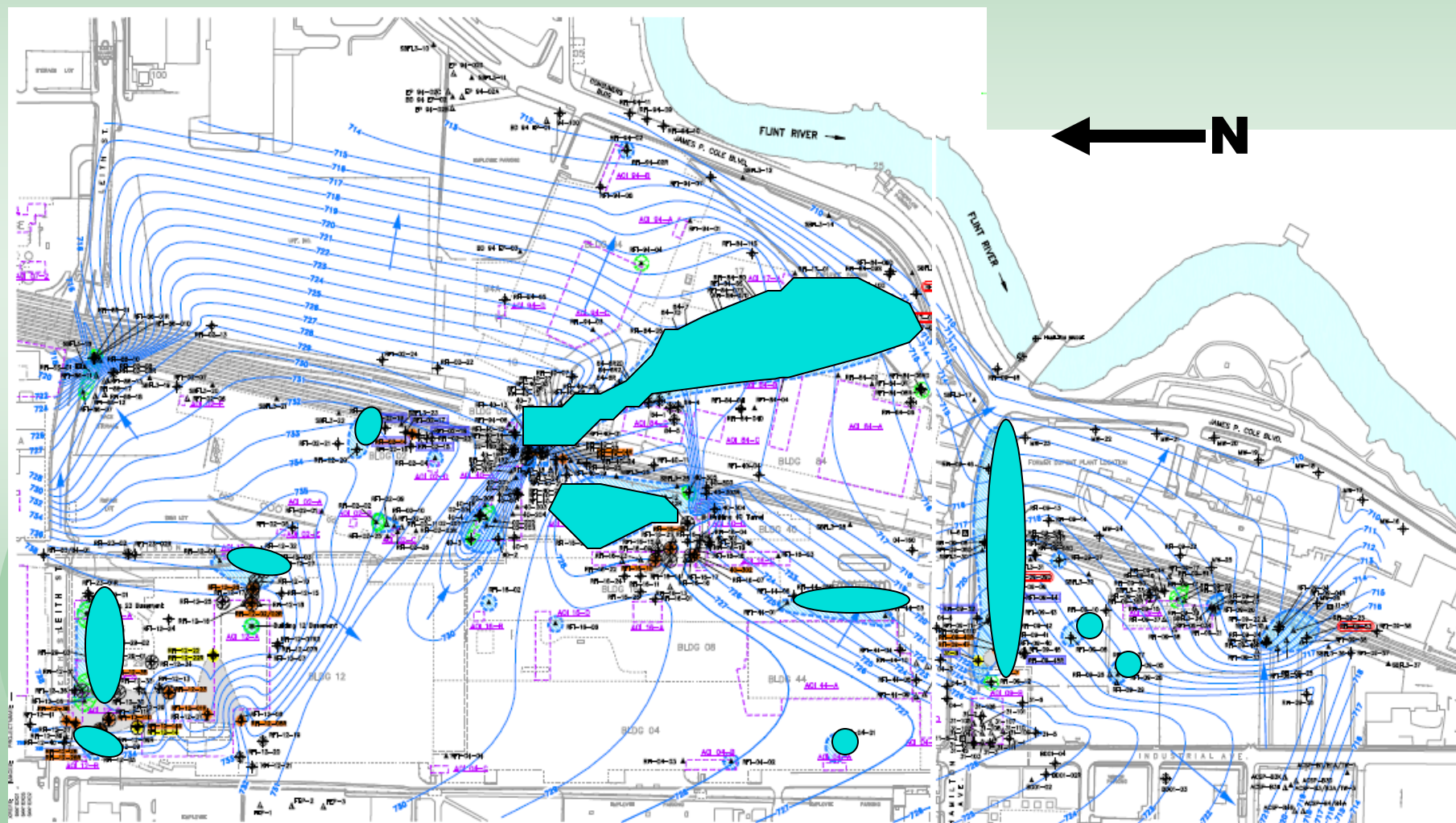
- ❖ Keep the current building slabs and asphalt intact to serve as a cover for the underlying contamination in six different areas around the facility.
- ❖ Institutional control to limit excavation in those discrete areas with soil contamination without proper protective clothing.
- ❖ Excavate area with soil contamination that is on the CSX property.
 - ❖ Future continued access for maintenance of an engineering control (ex. an asphalt cover) would be problematic.
 - ❖ Putting additional controls on a different property would also be problematic.

Areas of Soil Contamination (Southend)



Groundwater Remedy

- ❖ Contaminants include: metals and volatile organic compounds (VOCs).
- ❖ Contaminated groundwater plumes have been stable for years and therefore the remedy is for MLC to monitor the groundwater for years to ensure no migration to the Flint River.
- ❖ The groundwater monitoring program and contingency plan will be developed in the Corrective Measures Implementation (CMI) Workplan and will be approved by the EPA.



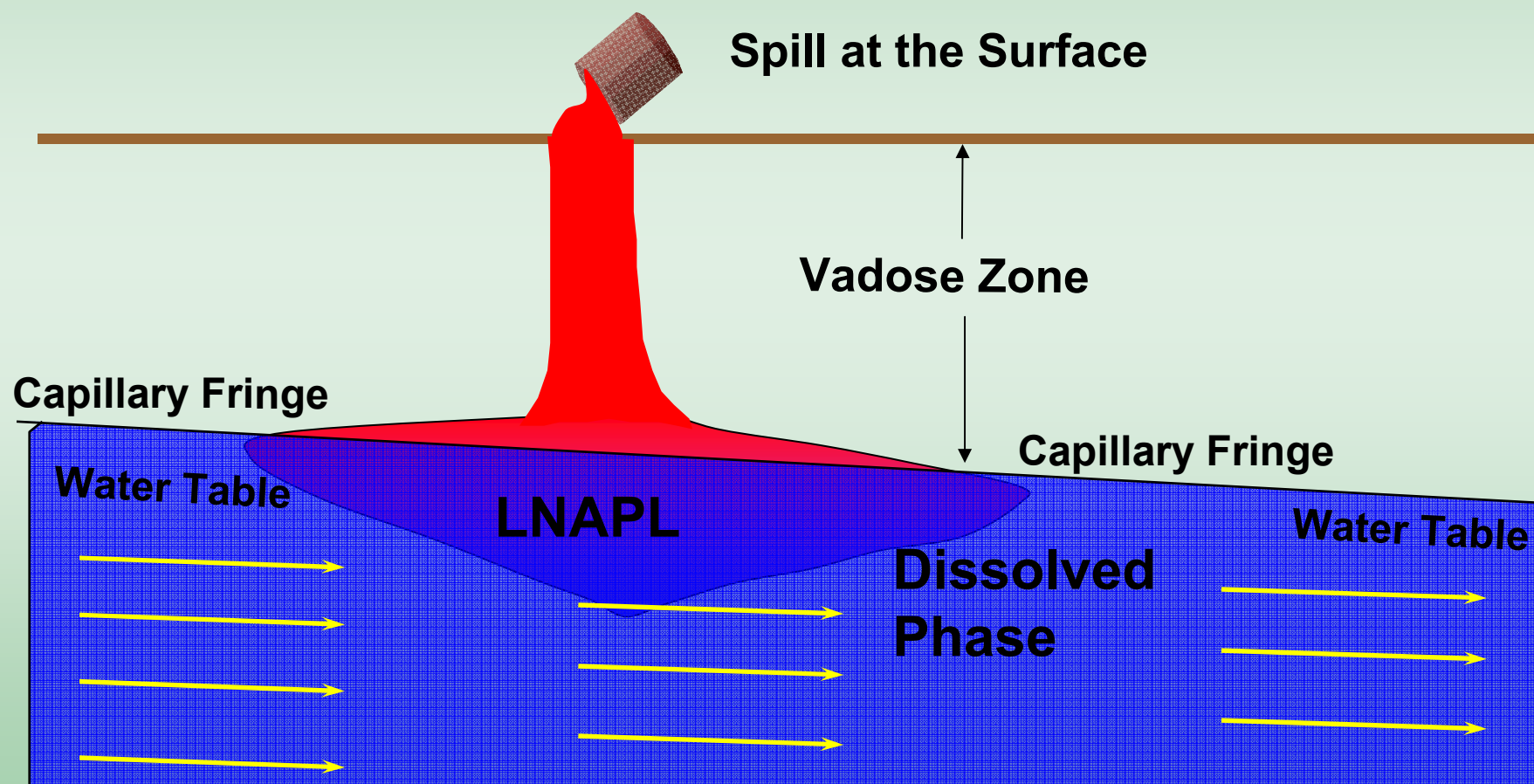
LNAPL Remedy

Change from the Statement of Basis

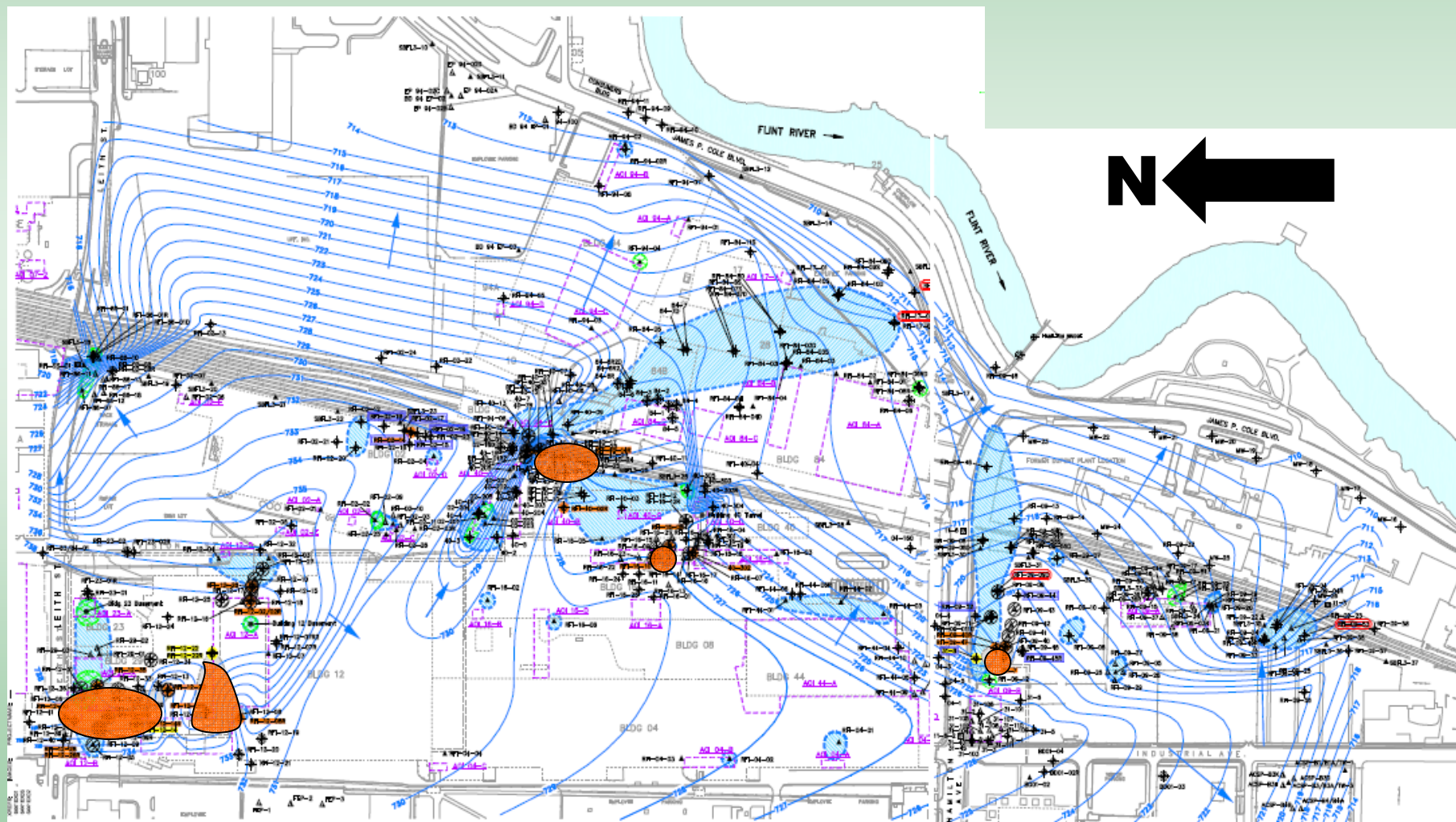
- ❖ Requiring testing of different technologies.
- ❖ The default remedy will be multi-phase extraction.



Light Non-Aqueous Phase Liquids (LNAPL)



Areas of LNAPL Contamination



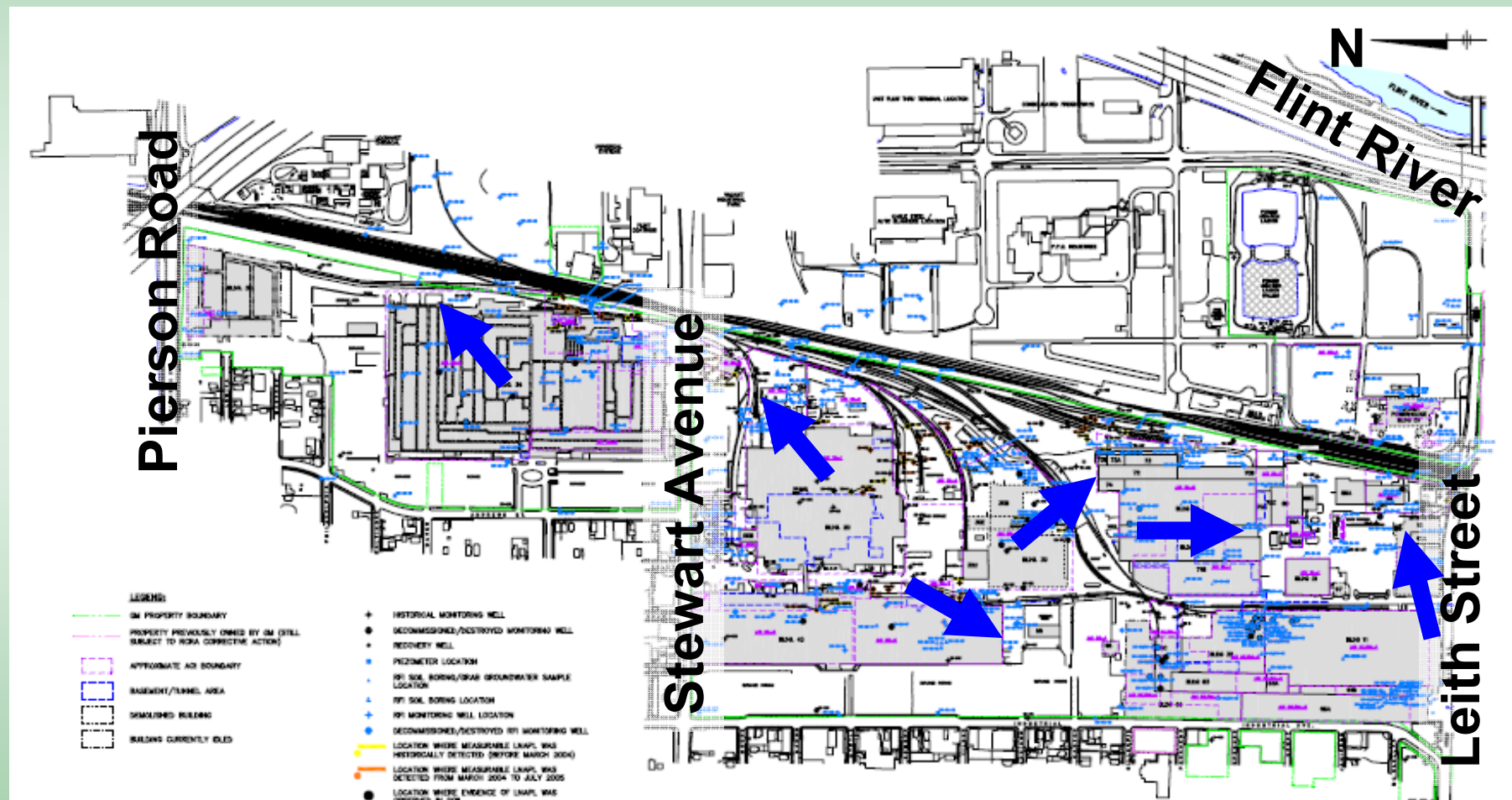
What's Next for the Southend?

- ❖ EPA will receive a CMI workplan from MLC detailing how the remedies will be implemented (anticipated by the end of the summer).
- ❖ After EPA's review and approval, construction and testing for the LNAPL remedies will begin.

Northend Nature and Extent of Contamination



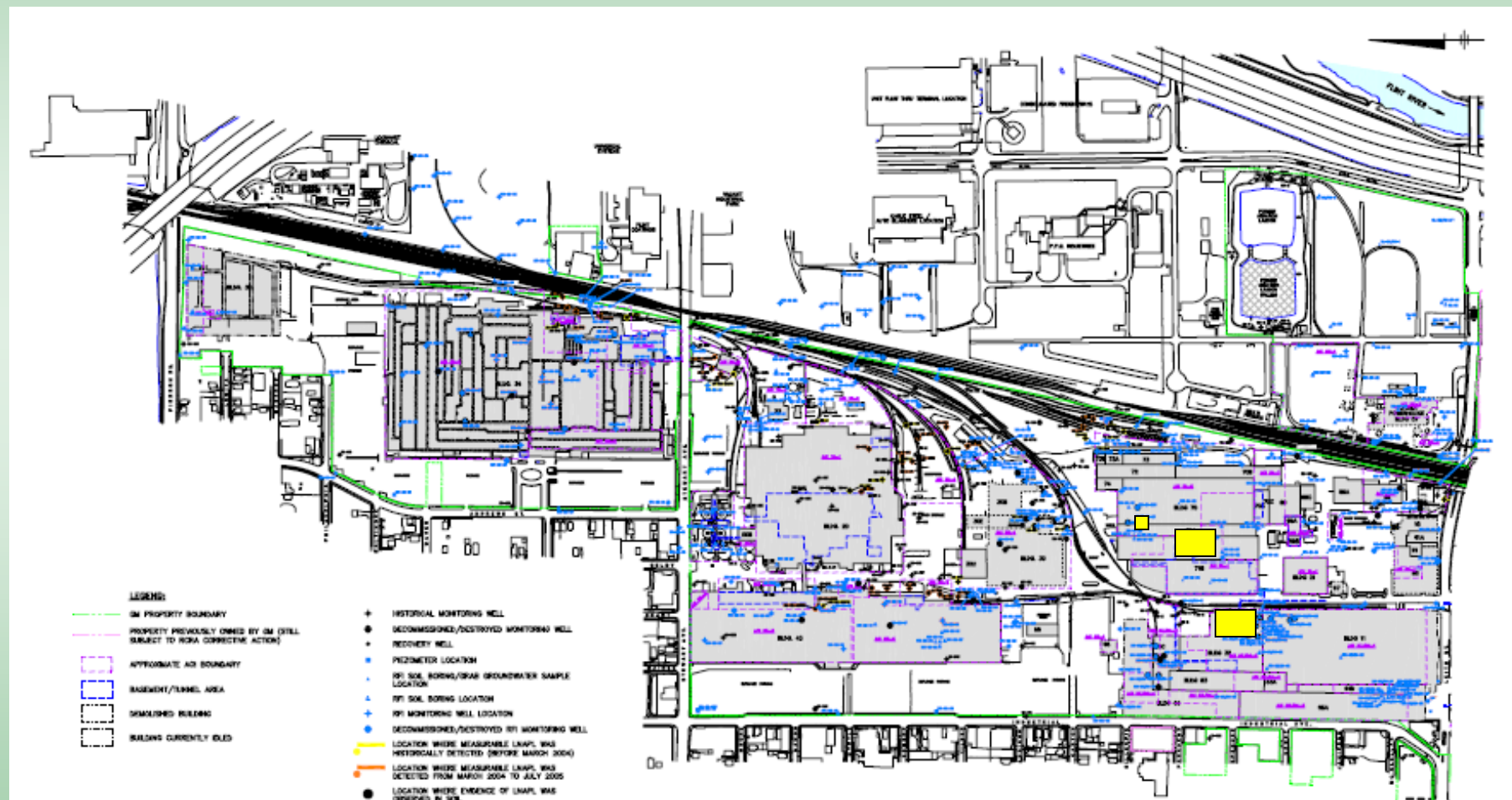
Environmental Setting



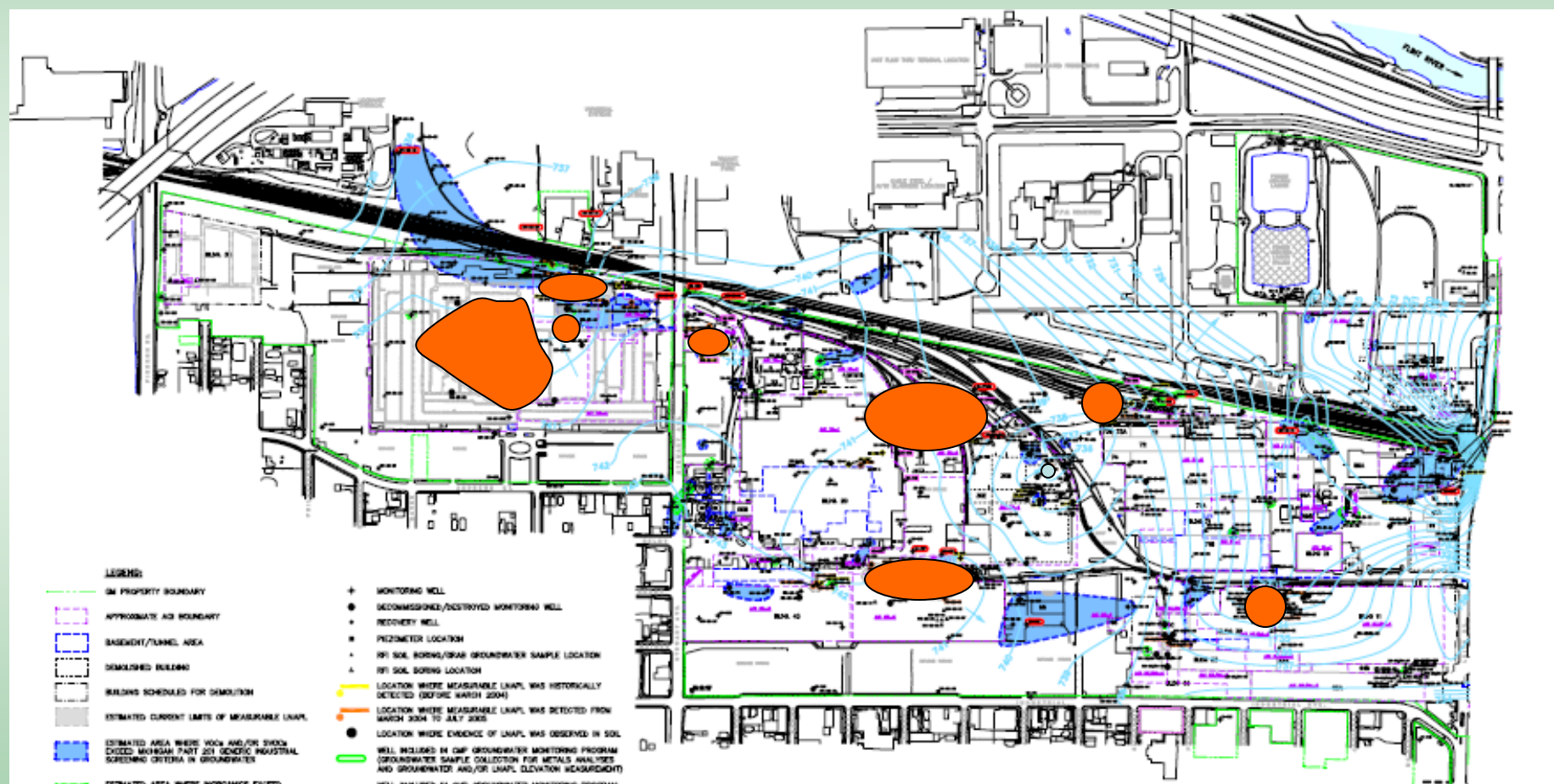
Contaminants

- ❖ Metals (arsenic, lead, chromium, etc.)
- ❖ Polyaromatic Hydrocarbons (PAHs)
- ❖ Volatile Organic Compounds (VOCs)
- ❖ Light Non-Aqueous Phase Liquids (LNAPL)
(*gasoline, hydraulic oils, diesel fuel*)
- ❖ Polychlorinated Biphenyls (PCBs)

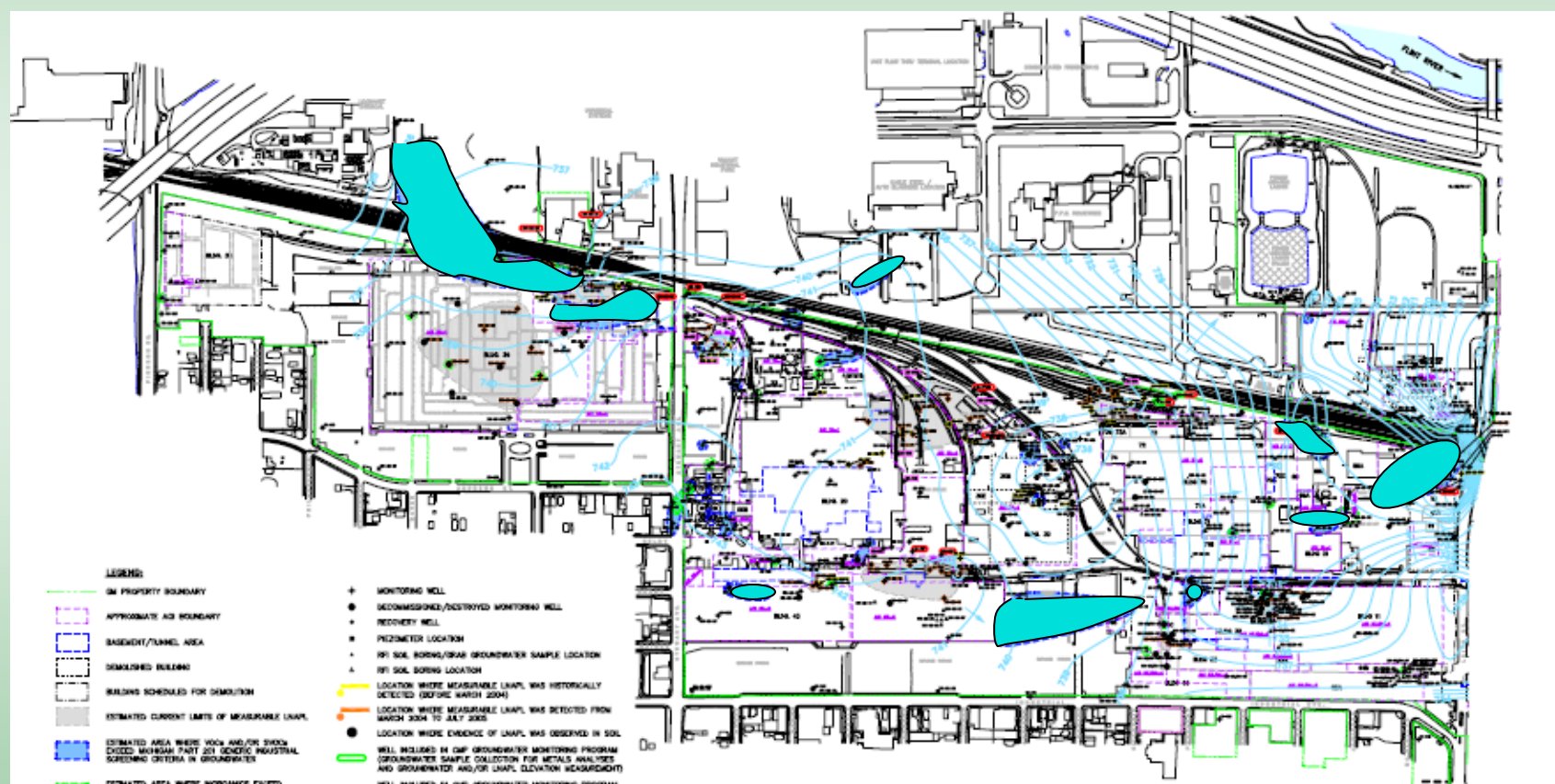
Soil Contamination



LNAPL Contamination



Groundwater Contamination



Challenges

- ❖ Hydraulic oils (type of LNAPL) mixed with PCBs
 - ❖ Toxics Substances Control Act (TSCA) disposal
 - ❖ Hydraulic oils are more viscous
- ❖ Buildings are still standing
- ❖ Operations are currently active
(planned to cease by the end of 2010)

Next Steps for the Northend

- ❖ MLC will submit to EPA a revised Corrective Measures Proposal for the Northend (by end of July)
- ❖ After EPA review, we will put out the CMP for public input (sometime in the Fall)
- ❖ EPA will issue a Statement of Basis (by the end of 2010)
- ❖ EPA will hold a public hearing on the SB and solicit comments (February/March 2011)
- ❖ EPA will issue a Final Decision (May 2011)

**Questions,
Comments?**



Contact Information

Jill Groboski, Project Manager

groboski.jill@epa.gov

312-886-3890

Rafael Gonzalez, Community Involvement Coordinator

gonzalez.rafaelp@epa.gov

312-886-0269