

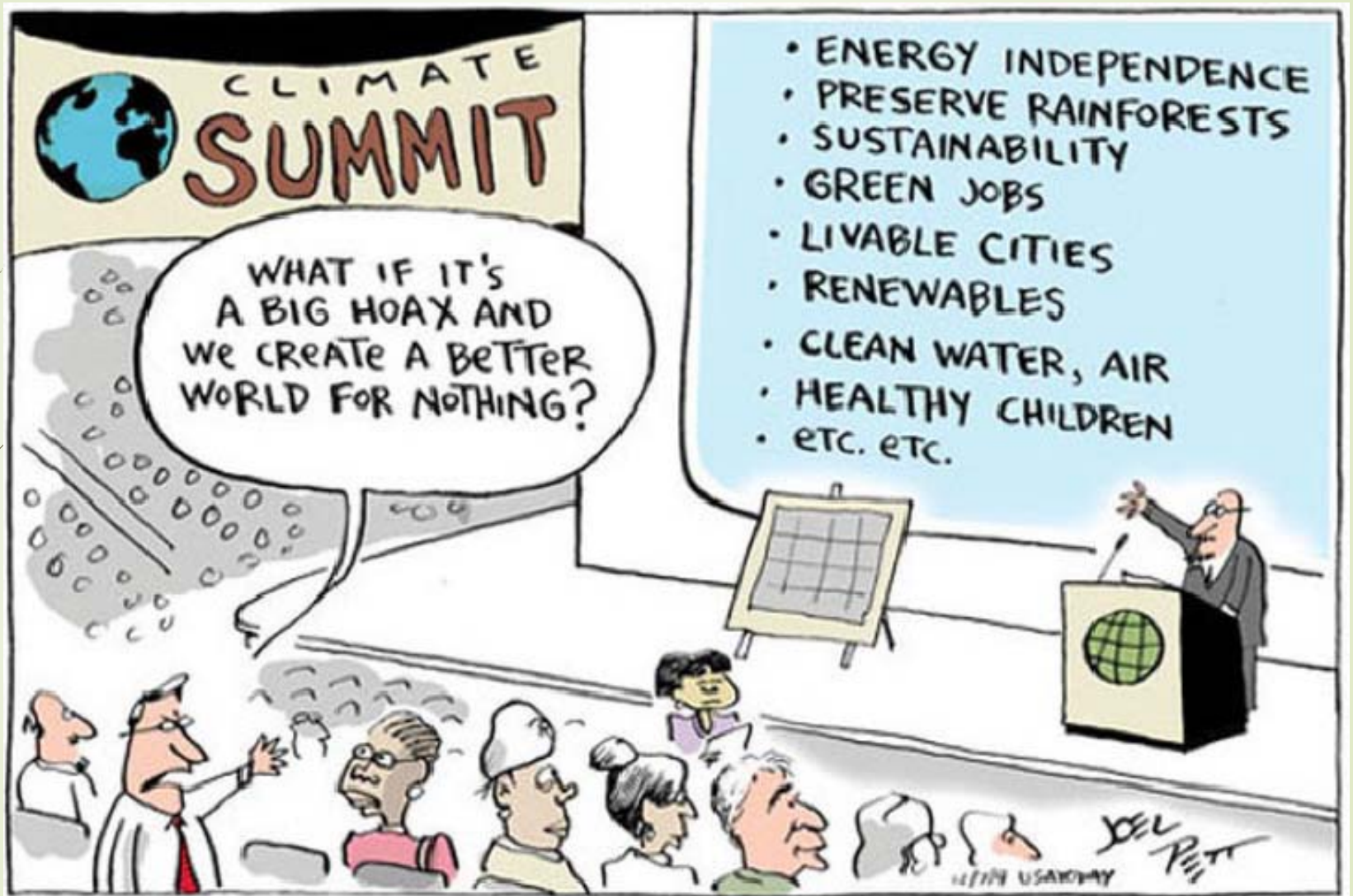
US EPA ARCHIVE DOCUMENT



# PERSPECTIVE ON THE CLEAN POWER PLAN

Robert McAfee

Arkansas Citizens First Congress & Citizens Climate Lobby



# Arkansas CPP Stakeholders

## Utility Groups:

- ▶ *Electric Cooperatives of Arkansas, Entergy Arkansas, Inc.*
- ▶ *Oklahoma Gas & Electric*
- ▶ *Plum Point Energy Associates*
- ▶ *Southwestern Electric Power Company/American Electric Power*

## Regional Transmission Organizations/Independent System Operators

- ▶ *Midcontinent Independent System Operator, Inc. & Southwest Power Pool*

## Fossil Fuel Organizations

- ▶ *America's Natural Gas Alliance*
- ▶ *American Coalition for Clean Coal Electricity*
- ▶ *Arkansas Independent Producers & Royalty Owners CenterPoint Energy Arkansas Gas*

## Energy Efficiency and Renewable Energy

- ▶ *Arkansas Advanced Energy Association*

- ▶ *Arkansas Public Policy Panel,*
- ▶ *Audubon Arkansas*
- ▶ *Sierra Club*

## Industrial Organizations

- ▶ *Arkansas State Chamber of Commerce*
- ▶ *Arkansas Environmental Federation*
- ▶ *Arkansas Forest and Paper Council*
- ▶ *Nucor Corp.*

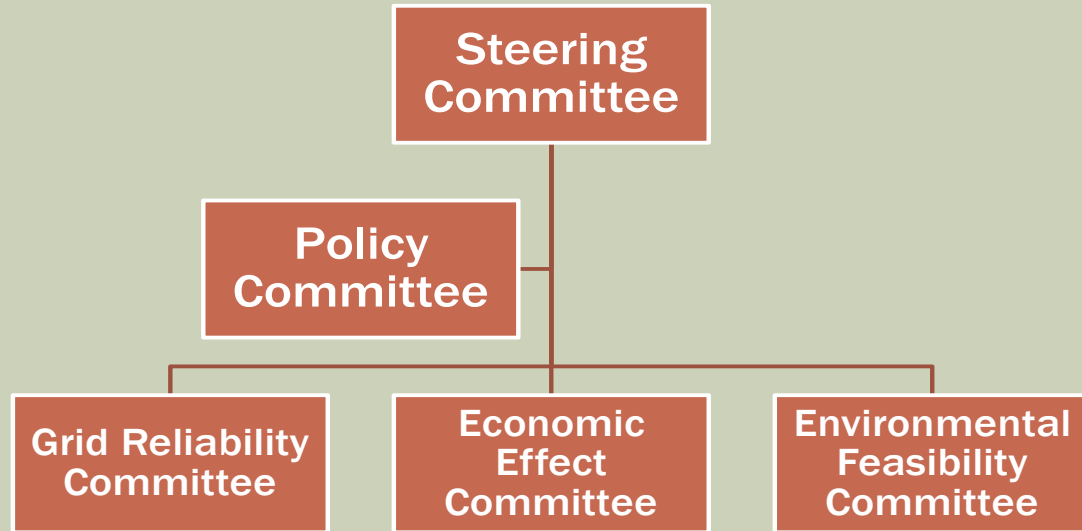
## Communities

- ▶ *Arkansas Electric Energy Consumers*
- ▶ *Arkansas Municipal League*
- ▶ *Conway Corp.*
- ▶ *North Little Rock Electric*

## State Agencies

- ▶ *Arkansas Attorney General's Office Arkansas*
- ▶ *Department of Health Arkansas Energy Office*

## FORMALIZED OPTION: ORGANIZATIONAL CHART



# Guidance on Considering Environmental Justice During the Development of Regulatory Actions



May 2015



## 3 CORE EJ QUESTIONS ACTION DEVELOPMENT PROCESS

- ▶ How did the public participation process provide transparency and meaningful participation for minority populations, low-income populations, tribes, and indigenous peoples?
- ▶ How did the rule-writers identify and address existing and/or new disproportionate environmental and public health impacts on minority populations, low-income populations, and/or indigenous peoples?
- ▶ How did actions taken under #1 and #2 impact the outcome or final decision?

## NOT REPRESENTED

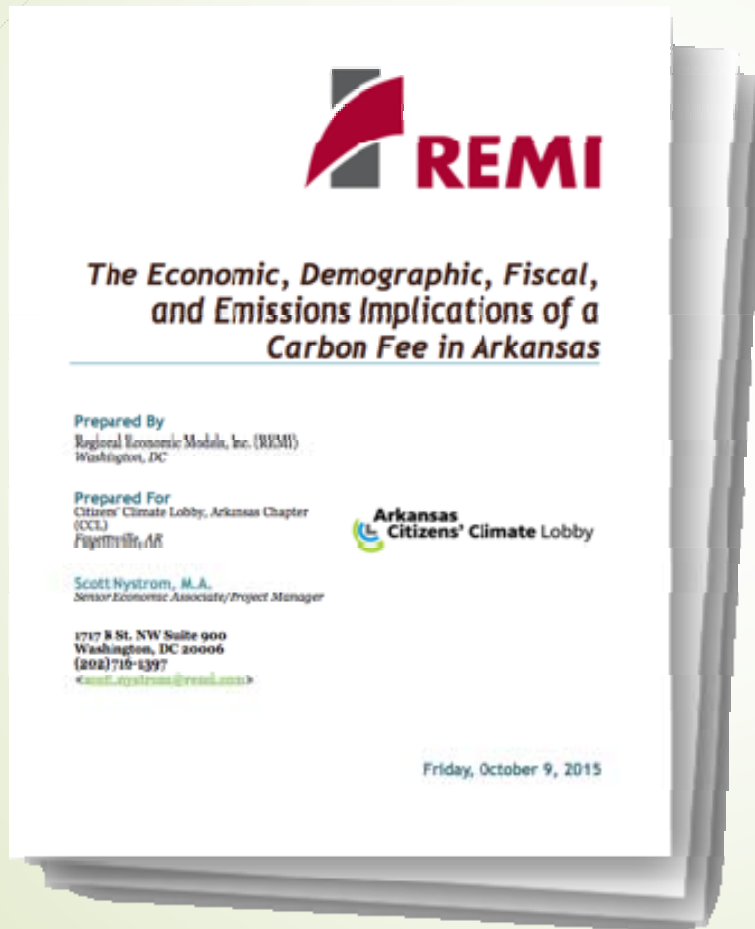
- *Faith Communities*
- *Minority participation*
- *Vulnerable communities*
- *General Public comment*



## NEED TO OVERCOME

- Lack of trust
- Lack of information
- Language barriers
- Socio-cultural issues
- Inability to access traditional communication channels
- Limited capacity to access technical and legal resources.

# REACHING CPP GOALS & NOT HURTING THE ECONOMY!



Reach EPA  
Clean Power  
Plan & **GROW**  
the Arkansas  
Economy

**Creating JOBS!**  
**Growing the ECONOMY!**  
**Reducing CLIMATE CHANGE!**



## **The Benefits of Carbon Fee & Dividend**

**November 21, 2015 (Friday) 11 AM**  
**Balley Chapel UMC**  
**209 North First Street — Gould, Arkansas**

*Sponsored by*  
*South Arkansas Caucus—Citizens First Congress*  
*Arkansas Citizens Climate Lobby*