

US EPA ARCHIVE DOCUMENT

Funding Strategies for Adaptation: Examples from the Water Sector

U.S. EPA's Adaptation Webcast #3

1 May 2013

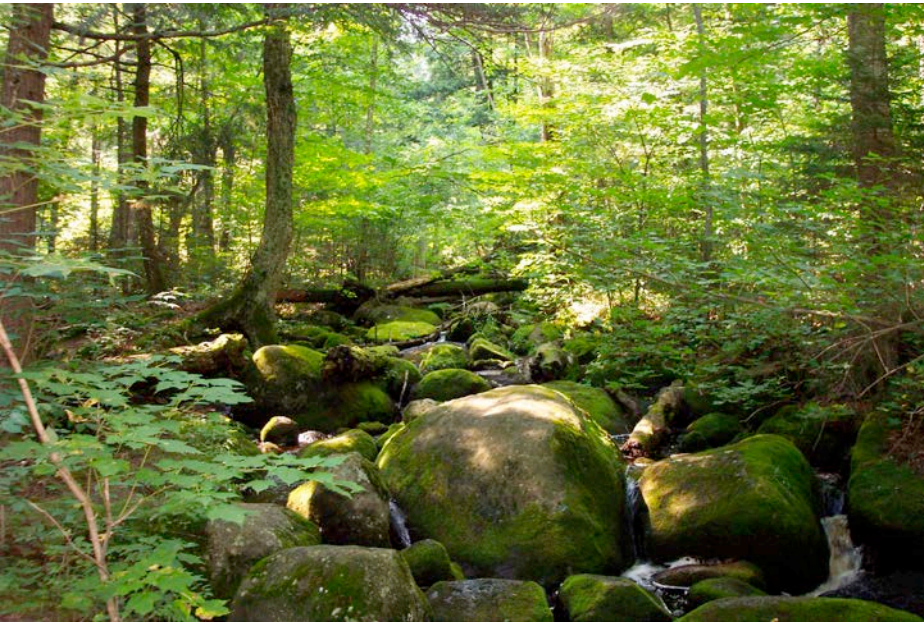
Lynn Broaddus, The Johnson Foundation at Wingspread





What does adaptation mean in a water context?





Green Infrastructure



Rainwater Harvesting



Balancing Act

Phases:

- Planning
- Execution
- Maintenance

Scale

Site ↔ City ↔ State



Sources of Financing

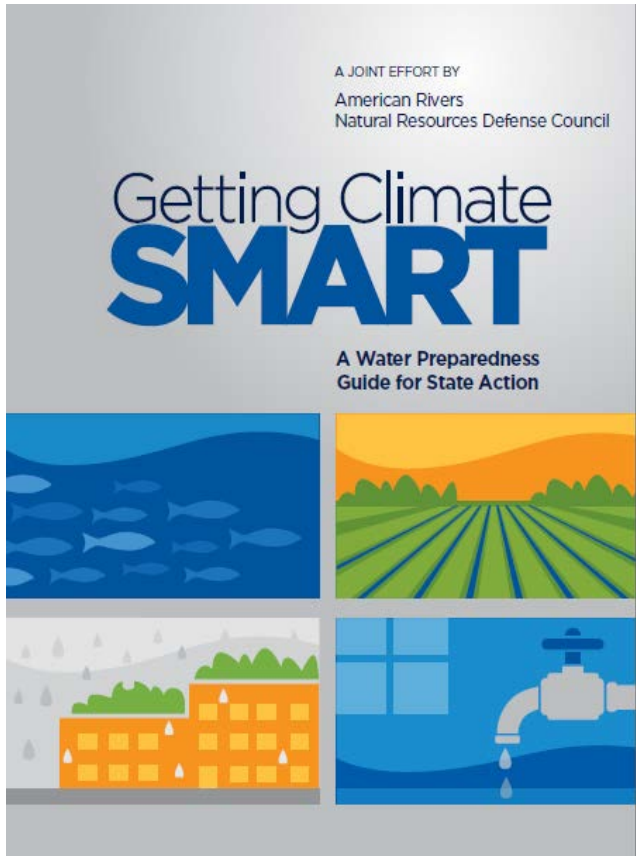
- Cash reserves
- Loan
- Grant

Ways to Pay

- Tax Levy (property tax, sales tax, TIF, etc.)
- Ratepayer Fees (water, sewer, or stormwater fees)
- OPM (Other People's Money)

Released 22 April 2013: It says it all

- Appendix II: 22 pages of funding resources



<http://www.americanrivers.org/newsroom/resources/climate-change/getting-climate-smart.html>

or

<http://www.nrdc.org/water/climate-smart/>



State Revolving Fund loans

- EPA's Green Project Reserve, CWSRF set aside for green infrastructure, water efficiency, energy efficiency, and more
- http://water.epa.gov/grants_funding/cwsrf/Green-Project-Reserve.cfm



Look to Foundations and NGO partners

- Potential source of matching funding
- *E.g. Cleveland Foundation awarded \$400,000 to 'green' the region's sewer plan*
http://blog.cleveland.com/architecture/2012/06/cleveland_foundation_wards_40.html
- Convening ability
- Source of different skill sets, different perspective
- *E.g. TNC and NRDC piloting novel financing tool for stormwater retrofits*
<http://www.slideshare.net/CWAA/nrdc>
- Source of volunteers
- Connection to private sector

Stormwater Fees



e.g. Philadelphia's Parcel-based stormwater fees

- Fee structure based largely on amount of impervious surface
- Developed with citizen input
- Replaced fees that were based on water use
- http://www.phila.gov/water/Stormwater_Where.html

Partner with other agencies, share costs

- Transportation
- Housing
- Sidewalks
- Parks and Recreation
- Urban Forestry
- Extension, Community Gardens
- Schools
- Private sector
- E.g. NYC's plan:
http://www.nyc.gov/html/dep/html/stormwater/nyc_green_infrastructure_plan.shtml

Tax Incremental Financing District Menomonee Valley, Milwaukee WI Shared Stormwater Park



From canal to wetland

The Milwaukee Metropolitan Sewerage District has proposed creating a wetland along the Burnham Canal, a tributary of the Menomonee River, as part of an environmental cleanup of the former shipping channel. An artist's illustration (shown above) shows how the wetland could look if the restoration project is completed.



Milwaukee Sentinel



Additional Resources

- Financing Sustainable Water Infrastructure
<http://www.johnsonfdn.org/aboutus/water-infrastructure>
- Disclosure Framework for Water and Sewer Authorities (Ceres)
<http://www.ceres.org/resources/reports/disclosure-framework-for-water-sewer-enterprises/view>
- The Value of Green Infrastructure for Urban Climate Adaptation (CCAP)
<http://ccap.org/media-center-item/new-ccap-reports-find-local-climate-adaptation-and-green-infrastructure-efforts-enhance-resilience-and-economic-performance/>
- Creating Private Markets for Green Stormwater Infrastructure
<http://www.nrdc.org/water/stormwater/green-infrastructure-pa.asp>

Lynn Broaddus, Director
Environment Programs
Lbroaddus@johnsonfdn.org
@LynnBroaddus