

US EPA ARCHIVE DOCUMENT

Adapting to Climate Change: Federal Leadership

Steve Seidel, Vice President for Policy Analysis & General Counsel
Pew Center on Global Climate Change

Presented to:

EPA's State and Local Climate and Energy Program

Webcast Mini-Series: Climate Change Adaptation for State and Local Governments
January 13, 2010

About the Pew Center

- Founded in May 1998
- Independent, non-profit, non-partisan
- Produces **research** on policy, economics, science & impacts, and solutions
- Works with **policymakers** at state, federal, and international levels
- Conducts **education** and outreach
- Engages the **business** community through the Business Environmental Leadership Council

A two-headed approach to climate change

“Avoiding the unmanageable and managing the unavoidable”*

- **Avoiding the unmanageable → mitigation**
 - Emissions reduction policies at state, regional, federal, and international levels
- **Managing the unavoidable → adaptation**
 - Preparedness, resilience, ecosystem management, protecting vulnerable populations

*Title of the UN Foundation Scientific Expert Group Report on Climate Change and Sustainable Development

The Role of the Federal Government

- If “all adaptation is local,” what role should the federal government play....
 - Federal government holdings will be affected by climate change
 - Federal programs can encourage appropriate adaptation measures (standards, program guidelines, etc.)
 - Federal financial support can encourage adaptation
 - Federal technical support is critical to successful adaptation
 - Federal coordination can reach across jurisdictions

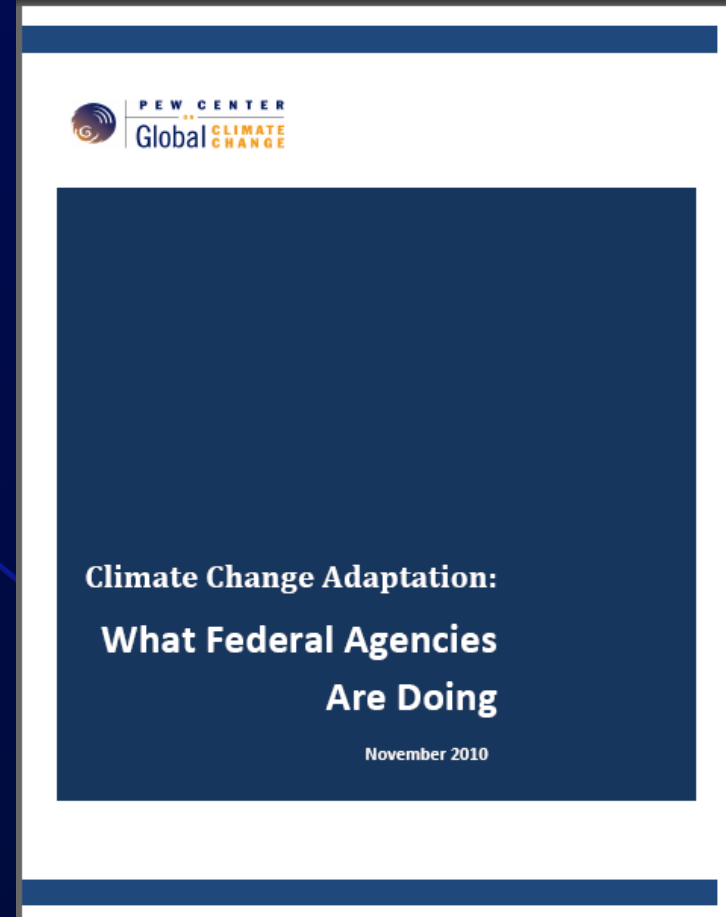
A Call for Federal Leadership

- *Adapting to Climate Change: A Call for Federal Leadership*
- Pew Center report emphasized need agencies to identify vulnerabilities and to “mainstream” adaptation into their programs.
- Executive Order and Interagency Climate Change Adaptation Task Force have spurred significant actions across the federal government.



What Federal Agencies are Doing

- Climate Change Adaptation: What Federal Agencies are Doing
- Highlights specific adaptation initiatives
- Covers 10 Departments (20 agencies within these) + Executive Office of the President



What Federal Agencies are Doing

- Overview of each agency or bureau within that Department and adaptation activities:
 - initiatives and strategies
 - programs and institutional mechanisms
 - tools and resources



Department of Agriculture (USDA)

- USDA Climate Change Program Office coordinates climate-related activities
- U.S. Forest Service Roadmap for Responding to Climate Change and Performance Scorecard



Department of Commerce (DOC)

- DOC Strategic Plan 2007-2012 has a focus on climate services
- DOC Energy and Climate Working group facilitates integration of climate-related activities



Department of Defense (DoD)

- DOD Quadrennial Defense Review includes climate change impacts
- DOD Readiness and Training Policy and Programs Office explores climate change adaptation



Department of Energy (DOE)

- DOE Office of Climate Change Policy and Technology is a focal point for collaboration on clean energy and adaptation
- DOE Office of Fossil Energy is assessing the impacts of climate change on DOE facilities



Department of Health and Human Services (HHS)

- CDC Climate Change and Public Health Program helps to develop climate change preparedness across CDC's workforce, partners and research, and health departments



Department of Homeland Security (DHS)

- DHS Climate Change Adaptation Task Force is examining climate change implications for missions and operations
- FEMA is developing a Risk MAP to provide data, increase awareness, and reduce risk to life and property



Department of Housing and Urban Development (HUD)

- HUD Partnership for Sustainable Communities is improving planning efforts, land use, and zoning
- Long-term Disaster Recovery Working Group (w/DHS) is helping communities protect against effects of climate change



Department of the Interior (DOI)

- DOI Secretarial Order to develop an integrated strategy to respond to the impacts of climate change
- DOI Landscape Conservation Cooperatives support integrated adaptation efforts across landscapes



Department of Transportation (DOT)

- Center for Climate Change and Environmental Forecasting (CCCEF) is focal point for climate change
- CCCEF Strategic Plan includes actions to prepare for the impacts of climate change

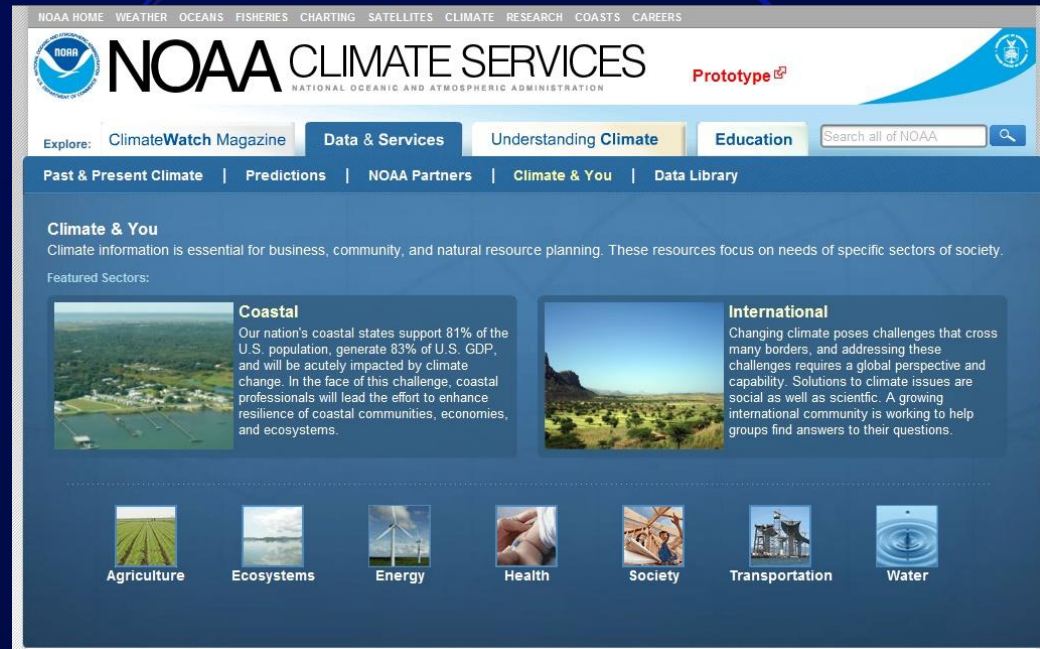


Environmental Protection Agency (EPA)

- National Water Program Strategy identifies water impacts and goals and objectives to respond to these impacts
- Global Change Impacts & Adaptation Program assesses impacts of climate change on human health and environment

NOAA Initiatives

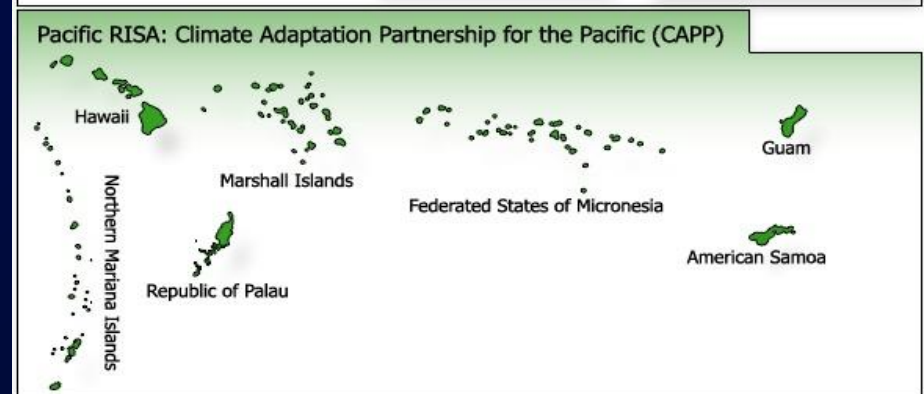
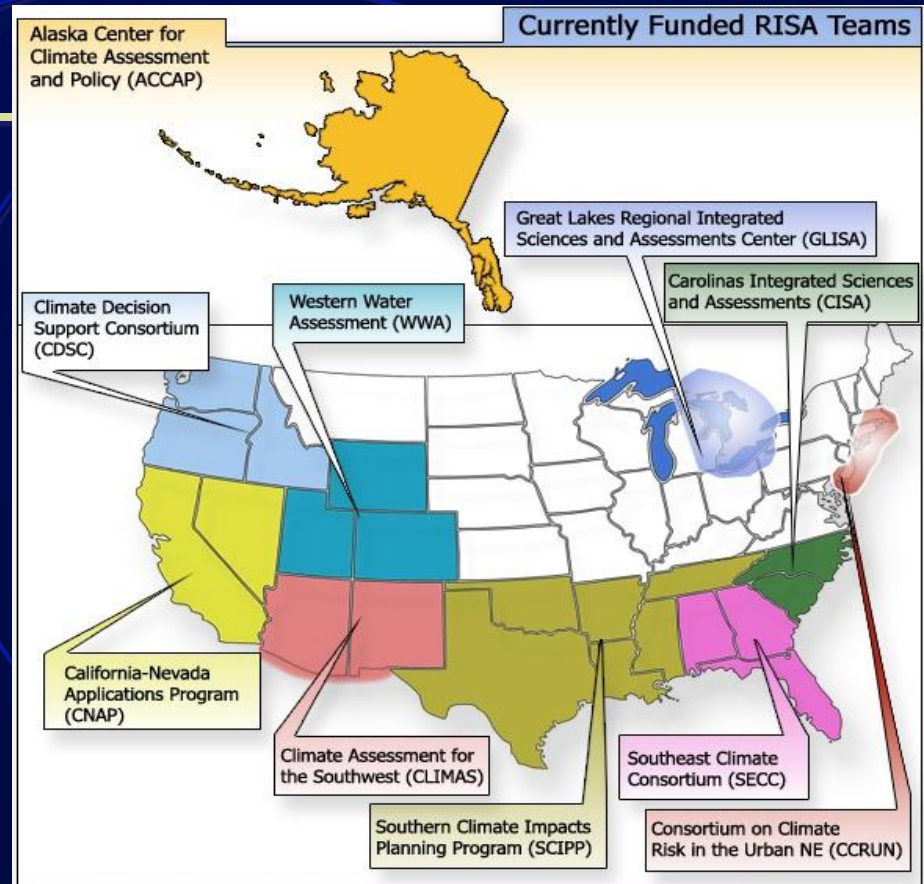
- **Proposed NOAA Climate Services**
 - Currently in its prototype phase
 - Goal of becoming the “go-to” website for climate data, products, and services for all users
 - Portal will enhance access to climate data and services, timely articles and information, educational resources, and tools



www.climate.gov

NOAA Initiatives

- The Regional Integrated Sciences and Assessments (RISAs)
 - teams are regional, university-based research groups
 - analyze the impacts of climate variability and change on resource management, planning, and policy decisions in key sectors
 - Sample projects:
 - Western Water Assessment: Drought Adaptation among Ranchers in the Intermountain West (and building a network of agriculturalists to inform WWA)
 - Great Lakes Regional Integrated Sciences and Assessments Center : Downscaled climate projections program



NOAA – Coastal Adaptation Resources

Coastal CLIMATE Adaptation

CCA Home Resources Forum Calendar Groups Get Started Register

Sea Level Rise Impacts Viewer

Monthly Feature

Sea Level Rise Impacts Viewer

See potential impacts with this Coastal Services Center tool

RESOURCES

By Category or State

- » Adaptation and Action Plans
- » Case Studies and Strategies
- » Climate Change Communication
- » Climate Change Science and Impacts
- » Guidance and Guidebooks
- » Outreach Materials
- » Policies and Legislation
- » Risk and Vulnerability Assessments
- » Stakeholder Engagement
- » Training and Workshop Materials

Map of the United States with state abbreviations: NH, MA, RI, CT, NJ, DE, MD.

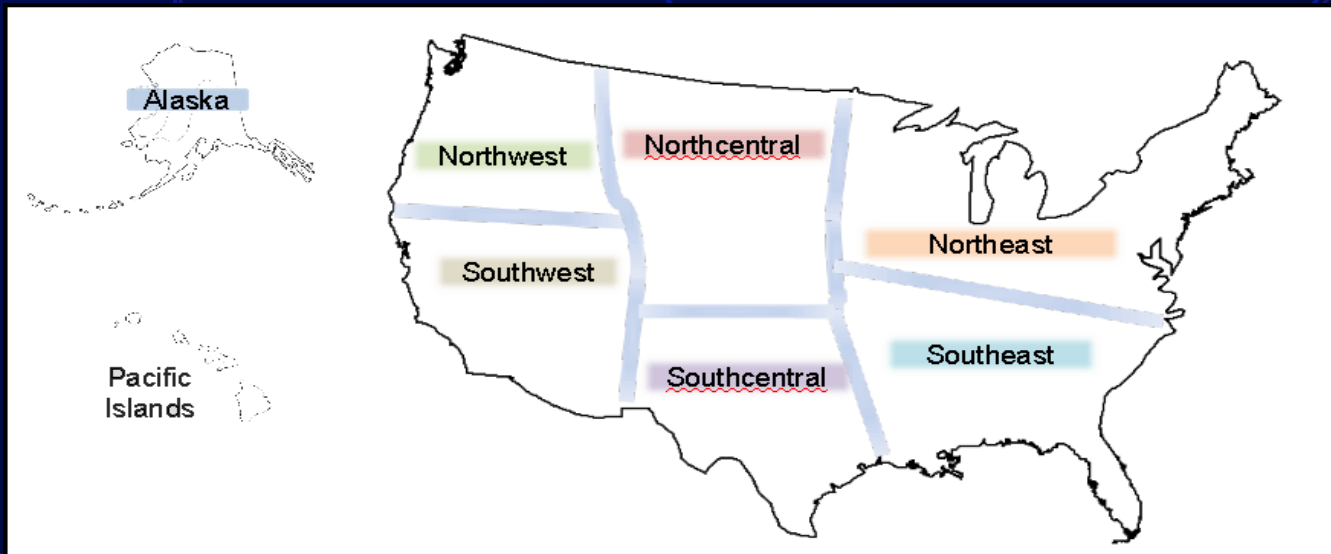
Army Corps Initiatives

- ***Interagency Workgroup on Climate Change and Water Resources***
 - Working with the Bureau of Reclamation, USGS, and NOAA, these agencies issued a report on how climate change considerations can be incorporated into activities related to the Nation's water resources
- ***Adaptation pilot projects***
 - Looking at a range of situations – reservoir resiliency, back bay flooding protection, shoreline protection feasibility to identify informational needs, tools and policies that could be more broadly applied.
- ***Guidance on Incorporating Future Sea-Level Change Projections into Planning and Design***
 - The USACE issued guidance incorporating sea level change in public works

Department of the Interior

• DOI Climate Science Centers (CSCs)

- Working with USGS to broaden the current USGS Wildlife and Climate Center scope to include an additional 8 regional DOI CSCs.
- CSCs established in Alaska, Southwest, Southeast, Northwest, and North Central; others under development
- Centers provide climate change impact data and tools to support Department managers and other partners responsible for managing the land, water, fish and wildlife, and cultural heritage resources



Department of Transportation

- *DOT Transportation and Climate Change Clearinghouse*
 - Site provides resources that identify potential impacts of climate change on transportation infrastructure
 - Includes information on state and local planning efforts and approaches for integrating climate change considerations into transportation decision making, of which some address adaptation
- *Federal Highway Administration (FHWA) Adaptation Working Group*
 - Formed a multi-disciplinary internal working group in the fall of 2008
 - Purpose is to coordinate policy and program activities to address climate change impacts to transportation infrastructure.
 - Developing a Strategy to Address Adaptation to Climate Change Effects
 - Has initiated pilot projects aimed at developing risk assessment models for use in addressing adaptation

For More Information

www.pewclimate.org

Steve Seidel

SeidelS@pewclimate.org