

US EPA ARCHIVE DOCUMENT

# U.S. EPA's State Climate and Energy Technical Forum & Local Climate and Energy Webcast Series

Present:

## Climate Change Adaptation for State and Local Governments Achieving Buy-In for Adaptation

Telephone call-in number: (855) 766-8628 / Code: 19831921#

**We will start in a few minutes. Thank you for joining us.**



**State and Local  
Climate and Energy Program**





**State and Local  
Climate and Energy Program**

## **Climate Change Adaptation for State and Local Governments Achieving Buy-In for Adaptation**

U.S. EPA State and Local Climate and Energy Program

March 21, 2013

1:00 PM ET – 2:30 PM ET

Telephone call-in number: (855) 766-8628 / Code: 19831921#

# Webcast Agenda



- **Welcome and Introduction**  
Emma Zinsmeister, U.S. EPA State and Local Climate and Energy Program
- **Adaptation Communications: An Overview of the Research and Practice**  
Cara Pike, The Social Capital Project / Climate Access
- **Climate Adaptation Planning in Urban Environments**  
Cynthia Rosenzweig, NASA GISS / Columbia University
- **Climate Solutions University: Forest and Water Strategies**  
Nancy Gilliam, Model Forest Policy Program  
Gwen Griffith, Cumberland River Compact
- **Helping Communities and Stakeholders Decide on Economically Viable Sea Level and Storm Surge Adaptation Strategies with COAST**  
Jonathan (J.T.) Lockman, Catalysis Adaptation Partners
- **Joint Panel Session**
- **Q and A Session**
- **Optional Feedback**

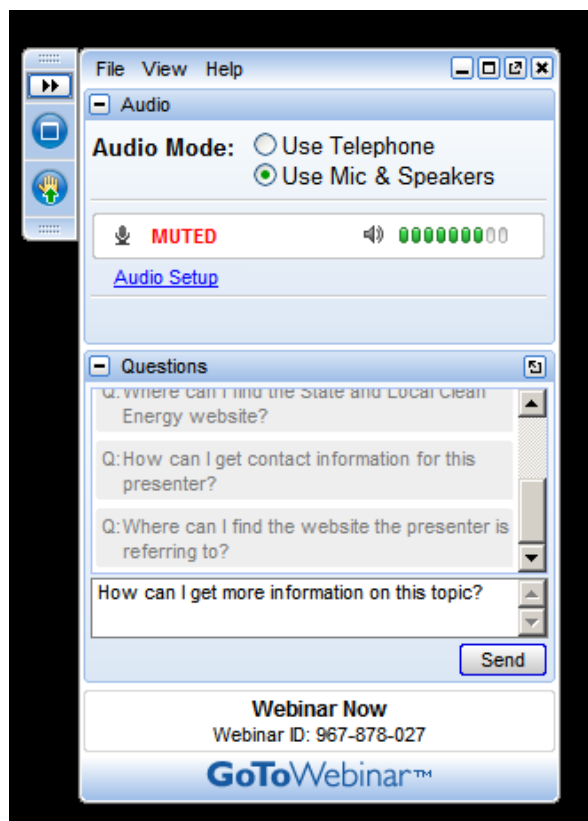
# GoTo Webinar Software Logistics



- You will be muted throughout this webcast to minimize background noise. You'll be able to submit questions and comments in writing.
- PDF and audio files of today's session will be made available for download in a few weeks at:
  - [www.epa.gov/statelocalclimate/web-podcasts/index.html](http://www.epa.gov/statelocalclimate/web-podcasts/index.html)
- Throughout the webcast, if you have technical difficulties, please contact Wendy Jaglom from ICF at:  
[Wendy.Jaglom@icfi.com](mailto:Wendy.Jaglom@icfi.com)

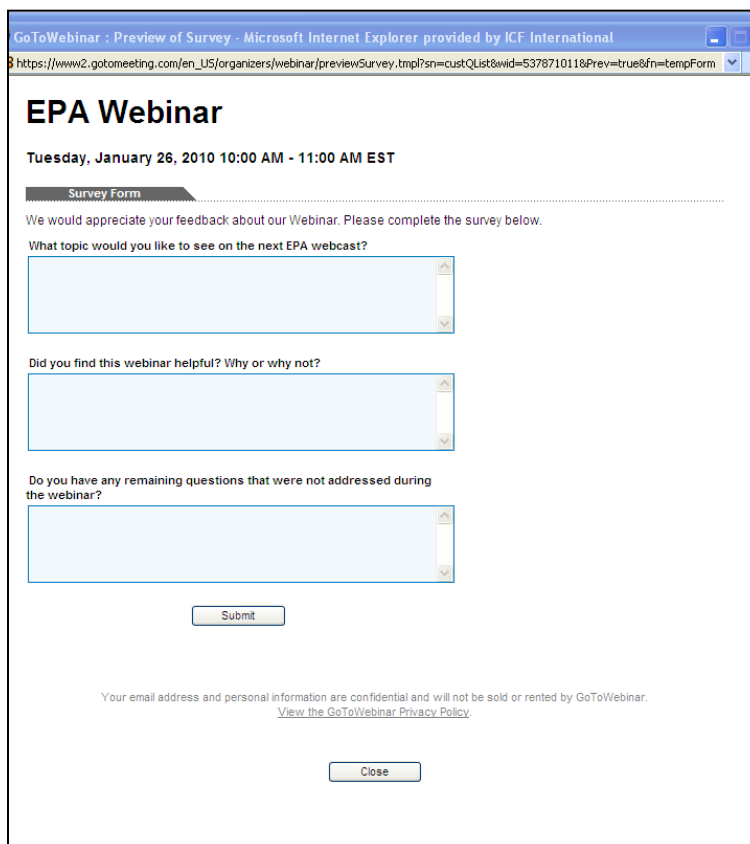
# Questions (GoTo Meeting)

- If you have a question, submit through the question pane.
- We will compile these questions and ask them during the Q&A session.
- Please include the name of the presenter you would like to answer your question.



# Optional Feedback (GoTo Meeting)

- A pop-up window will appear once you exit GoTo Meeting.
- Please take a few minutes to respond to the optional questions and provide your feedback.



GoToWebinar : Preview of Survey - Microsoft Internet Explorer provided by ICF International  
https://www2.gotomeeting.com/en\_US/organizers/webinar/previewSurvey.tml?sn=custQList&wid=5378710118&Prev=true&fn=tempForm

## EPA Webinar

Tuesday, January 26, 2010 10:00 AM - 11:00 AM EST

**Survey Form**

We would appreciate your feedback about our Webinar. Please complete the survey below.

What topic would you like to see on the next EPA webcast?

Did you find this webinar helpful? Why or why not?

Do you have any remaining questions that were not addressed during the webinar?

Submit

Your email address and personal information are confidential and will not be sold or rented by GoToWebinar.  
[View the GoToWebinar Privacy Policy.](#)

Close

## Helping state and local governments reduce GHGs

- We use co-benefits strategies to achieve GHG and policy goals
  - Environmental, energy, economic, health benefits
  - Example: EE/RE/CHP can lower costs to comply with air standards
- We foster inter-agency collaboration
  - States - air offices, energy offices, PUCs
  - Locals – planning, environmental services, energy and many other related departments
- We help state and local governments make the case for action
  - Best practice-based policy approaches
  - Analytical tools and information
  - Communications resources including peer exchanges, lessons learned
- **All our resources are available at:**

[www.epa.gov/statelocalclimate](http://www.epa.gov/statelocalclimate)





# Brief Background



**The climate is changing at an increasingly rapid rate.**

## MITIGATION

**What is it?** Efforts to slow the rate of change, including reducing GHG emissions.

**Why is it important?** Reduce the magnitude of the future impacts of climate change.

**What does it look like?** Energy efficiency, renewable energy, materials management, community design, transportation, etc.

## ADAPTATION

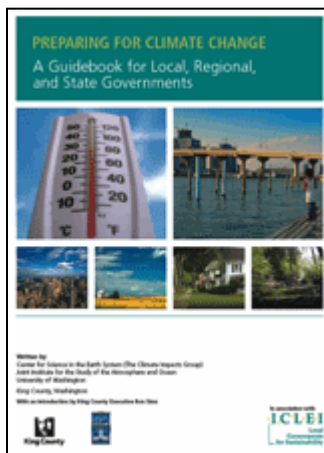
**What is it?** Efforts to moderate harm and/or capitalize on opportunities presented by actual or expected changes in climate.

**Why is it important?** The past is no longer a good predictor of the future. To improve the success of our investments, future conditions should be considered.

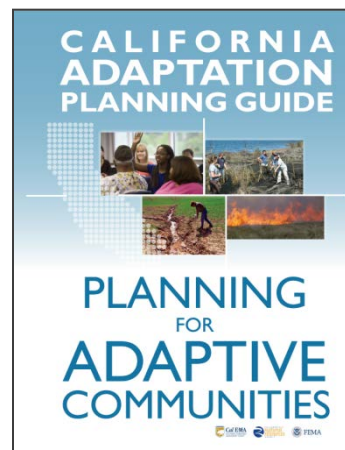
**What does it look like?** Adjusting building and development practices, transportation infrastructure, stormwater systems, energy systems, health programs, natural resource management, agricultural practices, emergency services, food security, etc.

# Example Adaptation Planning Process

1. Build and maintain support to prepare for climate change
2. Scope projected climate impacts on programs and planning areas
3. Assess vulnerability and risk
4. Set preparedness goals and actions
5. Implement your plan and evaluate effectiveness



*Preparing for Climate Change: A Guidebook for Local, Regional, and State Governments.* By the Climate Impacts Group; King County, Washington; and ICLEI-Local Governments for Sustainability USA.  
<http://www.cses.washington.edu/db/pdf/snoveretalqb574.pdf>



*California Climate Adaptation Planning Guide* By California Emergency Management Agency and California Natural Resources Agency with funding from FEMA.  
[http://resources.ca.gov/climate\\_adaptation/local\\_government/adaptation\\_policy\\_guide.html](http://resources.ca.gov/climate_adaptation/local_government/adaptation_policy_guide.html)

# U.S. EPA Resources

---



## U.S. EPA Climate Change Website

- Accessible scientific information about the causes and impacts of climate change [www.epa.gov/climatechange](http://www.epa.gov/climatechange)
- Specific information about the impacts and adaptation options by region and sector for the U.S. [www.epa.gov/climatechange/impacts-adaptation/](http://www.epa.gov/climatechange/impacts-adaptation/)

## U.S. EPA Climate Change Indicators Report

- EPA report on set of 26 indicators used to track the signs of climate change [www.epa.gov/climatechange/science/indicators/index.html](http://www.epa.gov/climatechange/science/indicators/index.html)

## U.S. EPA State and Local Climate and Energy Program Website

- Links to state adaptation plans, resources, and tools [www.epa.gov/statelocalclimate/state/topics/impacts-adaption.html](http://www.epa.gov/statelocalclimate/state/topics/impacts-adaption.html)
- 2010-2011 climate adaptation webcasts on impacts, planning frameworks, and federal resources <http://www.epa.gov/statelocalclimate/web-podcasts/local-webcasts.html#adap1>

## Other U.S. EPA Programs

- Climate Ready Estuaries [water.epa.gov/type/oceb/cre/index.cfm](http://water.epa.gov/type/oceb/cre/index.cfm)
- Climate Ready Water Utilities [water.epa.gov/infrastructure/watersecurity/climate/index.cfm](http://water.epa.gov/infrastructure/watersecurity/climate/index.cfm)
- Urban Heat Island Reduction Program [www.epa.gov/heatisland](http://www.epa.gov/heatisland)

# Additional Resources

---

## **CAKE – Climate Adaptation Knowledge Exchange**

- Case studies, virtual library, online community [www.cakex.org](http://www.cakex.org)

## **C2ES Adaptation Resources**

- Impacts analysis, legislative tracking, example adaptation plans [www.c2es.org/science-impacts/adaptation](http://www.c2es.org/science-impacts/adaptation)

## **Georgetown Climate Center**

- Best practices, legal analysis, legislative tracking, example adaptation plans [www.georgetownclimate.org](http://www.georgetownclimate.org)

## **ICLEI – Climate Adaptation Guidance**

- Free adaptation resources, adaptation training, ADAPT Tool, regional impacts [www.icleiusa.org/climate\\_and\\_energy/Climate Adaptation Guidance](http://www.icleiusa.org/climate_and_energy/Climate_Adaptation_Guidance)

## **U.S. Global Change Research Program**

- National Climate Assessment, data, reports [www.globalchange.gov/](http://www.globalchange.gov/)

# Adaptation Webcast Mini-Series

---



## Climate Change Adaptation for State and Local Governments Webcast Mini-Series

### **Achieving Buy-In for Adaptation**

March 21, 2013 – TODAY!

### **Overcoming the Uncertainty Barrier to Adaptation**

April 17, 2013 (to be confirmed)

### **Attracting Funding for Adaptation**

May 1, 2013 (to be confirmed)

- Join EPA's State and Local Climate and Energy Newsletter to receive details on upcoming webcasts:

[www.epa.gov/statelocalclimate/newsletters/index.html](http://www.epa.gov/statelocalclimate/newsletters/index.html)

# Contact Information

---



**Emma Zinsmeister**

Lead Local Climate Strategy Analyst

U.S. Environmental Protection Agency  
State and Local Climate and Energy Program

[zinsmeister.emma@epa.gov](mailto:zinsmeister.emma@epa.gov)

202-343-9043