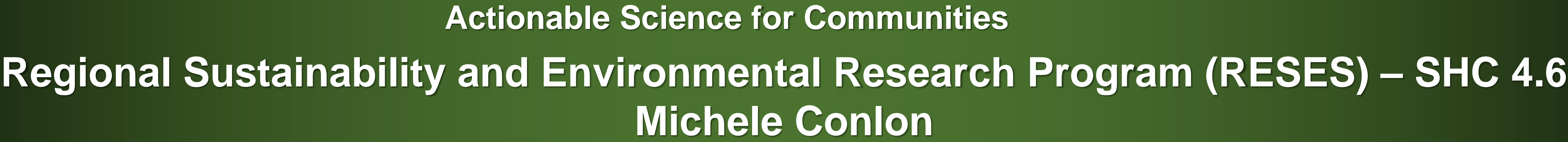


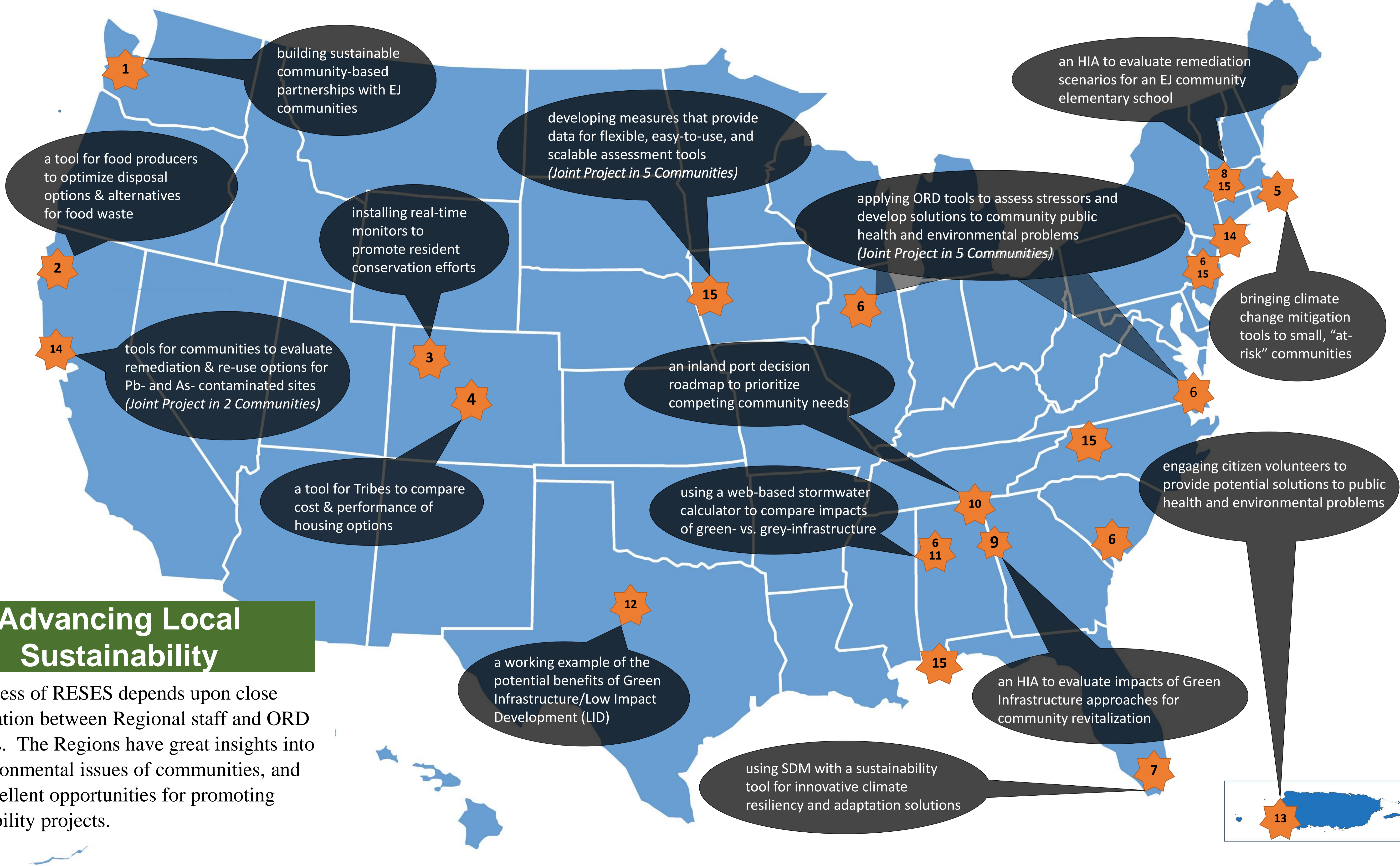
US EPA ARCHIVE DOCUMENT



RESES Project Titles & Community Locations	
1	Supporting Communities Using EPA Science Tools [Tacoma & Portland Harbor, WA]
2	Research and Development of National Waste to Biogas Mapping Tool – Creating an Organic Resources Exchange [Northern CA]
3	Real-Time Monitoring of Domestic Water Consumption in Concert with Real-Time Energy Measurement in Multifamily Housing [Boulder, CO]
4	Development of a Sustainability Tool for Tribal Housing Decision Making [Denver, CO]
5	Preparing Communities for Disruptive Climate Events in Southern Massachusetts [Southeastern MA]
6	Solution-Oriented Cumulative Risk & Near-Source Air Quality Assessments in Five Communities [Newark, NJ; Newport News, VA; Birmingham, AL; Charleston, SC; Roseland, IL]
7	Community Resilience Planning and Decision Making Framework for Coastal Communities [Southeastern FL]
8	An HIA in a Springfield, Mass., EJ Community Elementary School to Evaluate Proposed Remediation Scenarios for Indoor Sources and Near-Roadway Transportation Exposures [Springfield, MA]
9	Conducting an HIA in the Proctor Creek District of Atlanta, GA to Assess the Distribution of Environmental and Health Impacts as Green Infrastructure Approaches to Community Revitalization [Atlanta, GA]
10	Inland Port Community Resilience Transportation Analysis in Mississippi [MS-TN-AK port area]
11	Using Green Infrastructure to Address Climate Change; A Case Study in N. Birmingham, AL [Birmingham, AL]
12	Parking Lot Strategies to Mitigate Storm Water Quality/Volume and Urban Heat Island Effect Using Trees in Green Infrastructure [Dallas, TX]
13	Citizen Monitoring of Water Quality and Sanitation in a Rural Puerto Rico Watershed [SW Puerto Rico]
14	Development and Implementation of Bioavailability Tools to Link with C-FERST, Community Involvement and Inform Community Decisions [Brooklyn, NY; W. Oakland, CA]
15	Working With Communities to Develop Practical Measures of Sustainability [Pascagoula, MS; Lewisville, NC; Woodbine, IA; Newark, NJ; Springfield, MA]

Partnership Research Programs Across the Nation

Regional Office and ORD staff are partnering through RESES to collaborate with communities in every EPA Region.



Advancing Local Sustainability

The success of RESES depends upon close collaboration between Regional staff and ORD scientists. The Regions have great insights into the environmental issues of communities, and have excellent opportunities for promoting sustainability projects.