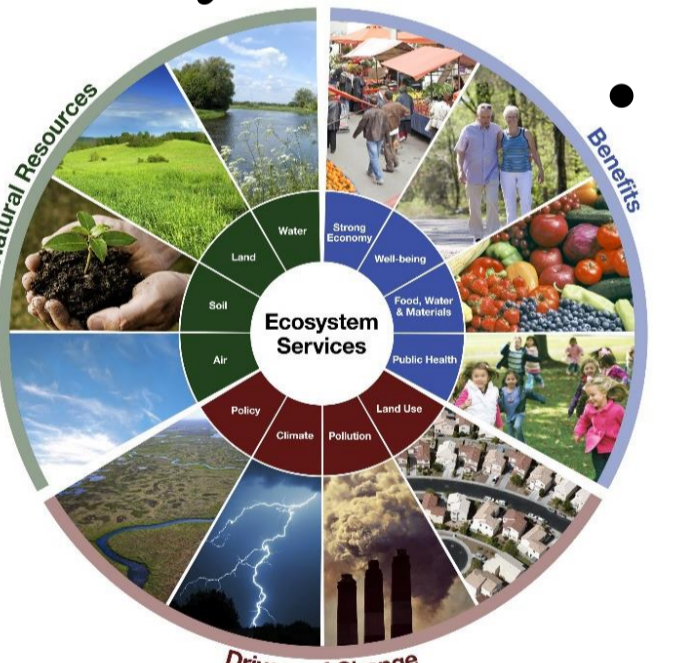


US EPA ARCHIVE DOCUMENT



### Problem Summary & Decision Context

- Communities are under pressure from a range of issues and are impacted by decisions and policies made within and external to their boundaries.
- Decision-makers at every level of governance need access to consistent environmental, social, and economic data to inform efficient, effective, and equitable decision-making.
- The use of advanced information technology, GIS, landscape-scale science, remotely sensed data, and eco-health science allow for incorporation of quantitative and qualitative spatial information into every day decision-making.



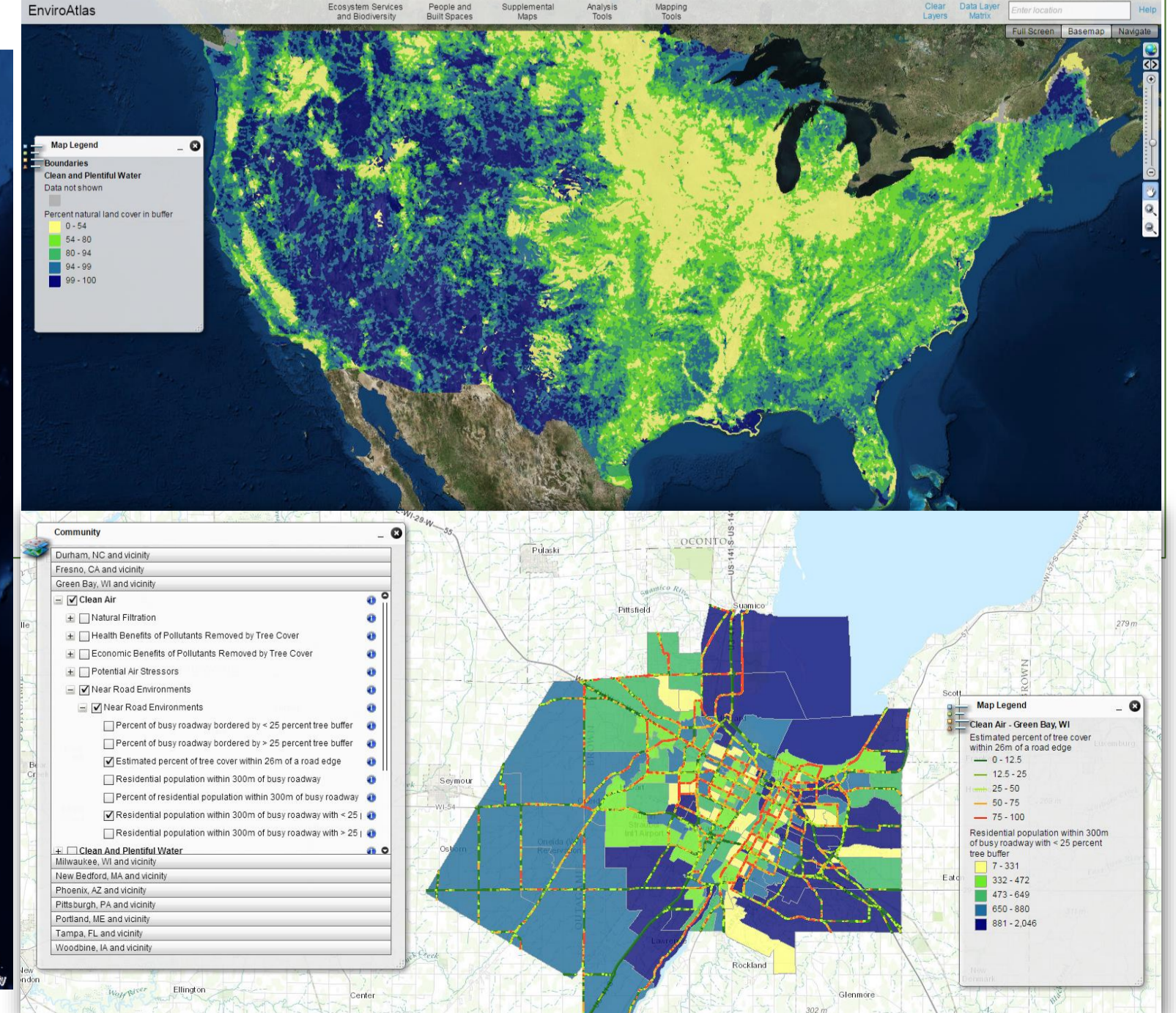
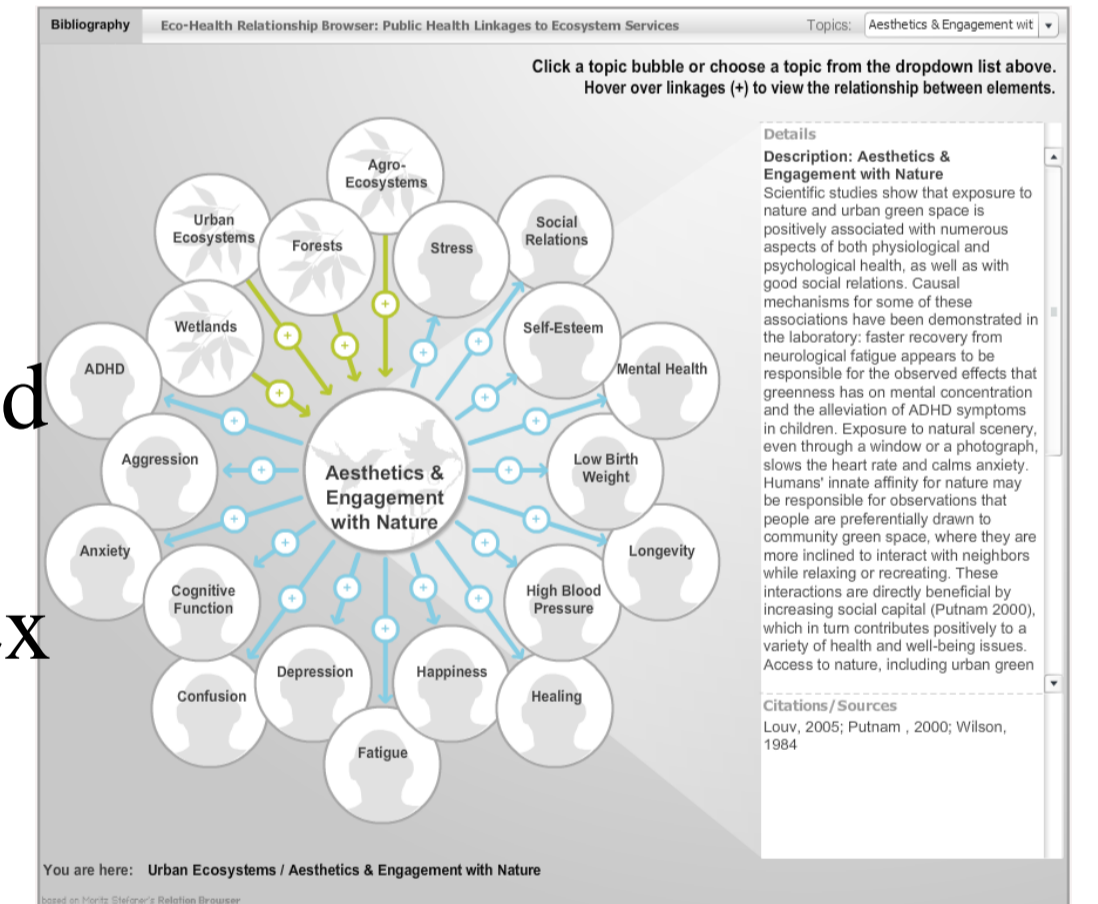
- Ecosystem services have emerged as a viable framework for decision-making and as an approach for economic valuation.

### Utility to Agency?

- Helps Regions help communities with decision-making; relevant to many decision types
- Provision of data and tools to multiple Program Offices; can serve many uses, including environmental justice
- Provides data for additional research and for education
- Can be leveraged with other Agency tools, e.g., NEPAassist, EJSCREEN, GeoPlatform, etc

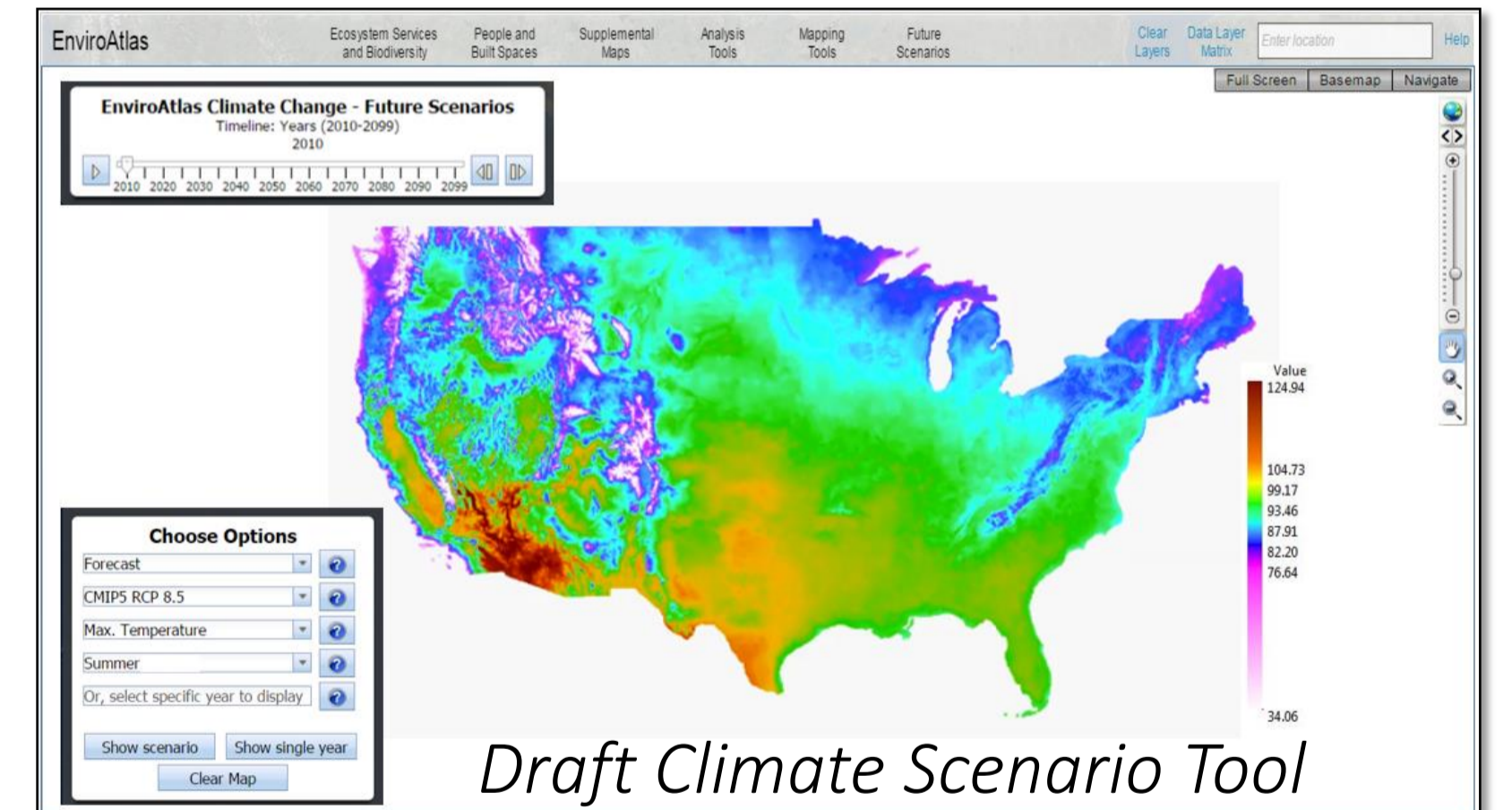
### Accomplishments

- EnviroAtlas publicly released in May 2014
  - 25, 000 web sessions; 33% return visitors; 152,000 map views (between May 1 – Dec 31)
- Serving as ecosystem services hub of EcoINFORMA (ecosystems.data.gov) – a White House initiative designed to mobilize and integrate federal environmental data; also featured in Climate.data.gov and Toolkit.climate.gov
- Implemented improved functionality based on user feedback from multiple groups
  - 650 beta testers, POs and ROs, peer reviewers, other users
- EnviroAtlas includes over 160 data layers for the conterminous nation and roughly 100 data layers for each of the selected communities
- Published data for 4 additional communities
- Published two use cases
- Conducted widespread outreach activities including non-traditional audiences for ORD
- EnviroAtlas data and tools are being used
  - Durham community used EnviroAtlas to prioritize tree planting efforts around elementary schools
  - Eco-Health Relationship Browser used in Health Impact Assessment training in health departments and classrooms
  - OW using EnviroAtlas data for TMDL recovery potential and prioritization
  - Region 4 using EnviroAtlas data in Watershed Integrity Index
  - South Atlantic Landscape Conservation Cooperative used EnviroAtlas data to help inform their conservation blueprint



### Future Directions

- Research and development leading to improved functionality including crosswalks with FEES and other ES classification systems and development of case studies or use cases using EnviroAtlas
- Development of new tools and data including a climate and ES scenarios tool, additional communities, updated Eco-Health Relationship Browser, index building tool, updated data based on NLCD 2011, and new metrics related to environment and socio-economic aspects
- Investigate relationships between eco health and human health and other well-being outcomes
- Communications and outreach including development of classroom curriculum, training materials, and web content; stakeholder outreach and feedback loop including live demonstrations; development of collaborative efforts within and external to EPA



### Partner Engagement Opportunities

- Live demonstrations for PO's and Regions
- Continued OW/ORD Collaboration
- OAQPS/ORD BenMAP / EnviroAtlas coordination and collaboration
- Program Office/Regions/ORD jointly develop use cases
- Program Office / Regional continuous feedback to ensure EnviroAtlas is meeting needs