

US EPA ARCHIVE DOCUMENT

# *Choctaw Nation HELP*

*(Healthy Energy Living Project)*

Tracy Horst

*Choctaw Nation of Oklahoma*

*"Sustaining our people, our traditions, our earth."*



# Choctaw Nation Introduction

- The Choctaw Nation of Oklahoma covers 11,299 square miles in southeastern Oklahoma and serves over 205,000 members worldwide.
- The Choctaw Nation Health Services Authority is a member of the Indian Health Services system and maintains a hospital and 7 outpatient clinics located throughout SE OK.
- Our hospital is 145,000 sq ft with 37 inpatient beds and 52 exam rooms.
- Began funding conservation measures through Department of Energy Grant in 2009
  - Hired Energy Manager
  - Began completing facility audits
  - Identified and initiated facility retrofits

# Our Energy Conservation History

- Evaluation of conservation measures
- Initiated conservation retrofits:
  - HVAC, lighting and window replacement, additional insulation
- Initiated facility energy audits
- New Buildings are being constructed with efficient lighting, windows, etc.



# Building Retrofits to Date



- ▶ Hospital and one Clinic & 3 small facilities
  - ▶ Light bulb replacement/reduction; occupancy sensors
- ▶ Durant Headquarters Facility
  - ▶ Window replacement, light bulb replacement and reduction, vending machine misers, occupancy sensors
- ▶ Gaming Facilities
  - ▶ 8 buildings (various sizes)
  - ▶ Light bulb replacement / reduction; occupancy sensors
- ▶ 7 Community Centers
  - ▶ Light bulb replacement

# Facility Audits

- ▶ Audits include a review of:
  - Previous 12 months of all utility billing
  - Building and construction type and building layout
  - Internal load – lighting, refrigeration, cooking/office equipment, number of people
  - Other loads – outdoor security and parking lights, motor loads, hot water heating
  - HVAC system and duct work
  - Thermostat settings
  - Insulation
  - Utility rates



# Benefits of Program

- Awareness / Education of Tribal Members, Employees and Local Communities for energy conservation methods
  - Employee Training Sessions
  - Through Newspaper articles to local communities / members
  - Sharing of Results
- Environment: reduce energy consumption



# CSC Grant Initiatives

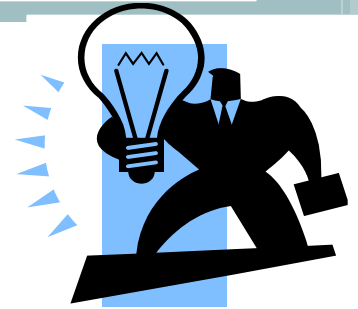
- 1) Install energy efficient lighting in our hospital and our out-patient clinics
- 2) Conduct on-going education for our employees and tribal members to reduce energy usage
- 3) Disseminate a White Paper detailing the process and success of the project
- 4) Produce and circulate a DVD emphasizing the success of the project and energy reduction education to conserve energy
- 5) Earth Day is Every Day Youth Event



# CSC Grant Results

- 1) Able to retrofit the interior hospital lighting, hospital entrance canopy and the parking lot lighting as well as two small clinics on site in Talihina, OK and a larger clinic and drug refill center in Poteau, OK
  - ✓ Reduced kilowatt hour usage by 400,000 kwh/year
  - ✓ Estimated dollar savings of \$21,500.
  - ✓ Greenhouse Gas reductions were 292 MT CO<sub>2</sub>, 1,439 lbs of SO<sub>2</sub> and 888 lbs of NO<sub>x</sub>

# Grant Continuation Plans



- The DOE grant has ended and our EPA grant is coming to an end as well. With no on-going funding we have created the following strategy to continue the program:
  - 1) Prioritize facilities that need the most assistance based on energy consumption
  - 2) Consider utility rebates available... Light retrofit, occupancy sensors, etc
  - 3) If energy savings is significant and rebates are available we can complete retrofits for minimal or no cost to the tribe
  - 4) The new program purchases the retrofit supplies and in most cases the facility completes the retrofit with own labor.
  - 5) Rebates are submitted and go back into the Building Conservation fund along with a 25% annualized savings 'fee'
  - 6) The savings are based upon documented usage and expected reduction
  - 7) The combination of the rebates and the savings fee allows the program to continue to complete projects

# Other Environmental Initiatives

- Recycling has become a strong point for the tribe. Prior to our opening a public recycling facility in Durant, OK in December, 2010 there was no place to recycle within our 11,300 sq mile area.
  - Today we recycle all types of paper and cardboard, plastics 1, 2 and 5, aluminum and steel/tin cans, Styrofoam, printer cartridges and electronic waste.
  - In 2012, we have recycled over 1,500,000 pounds of material.
- Early January, 2013 we expect to open a second recycling facility in Poteau, OK.
- Also have adopted 10 miles of highway for clean up/wildflower planting, adopted numerous parks for clean up, conducted recycling events for general materials and electronic waste
- Conducted used toy drives at Christmas

# Questions??



**Tracy Horst**

Choctaw Nation of Oklahoma

Project HELP (Healthy Energy Living Project)

[thorst@choctawnation.com](mailto:thorst@choctawnation.com)