

US EPA ARCHIVE DOCUMENT

LIST OF MATERIAL

| TYPE/LEVEL | QTY REQ'D | ITEM NO. | NAME/DESCRIPTION | NOTE NO. | DRAWING NUMBER OR PART ID. NUMBER | MATERIAL SPECIFICATION | |
|------------|-----------|----------|---|----------|-----------------------------------|------------------------|----------------|
| | | | | | | MATERIAL | STD/NUMBER |
| ASM | 1 | 1 | SHIELDED CONTAINER ASSEMBLY | | 165-F-026-W1 | - | - |
| PRT | 1 | 2 | BASE | | 165-F-026-W5 | CS | SEE NOTE 2 |
| PRT | 1 | 3 | OUTER SHELL | | 165-F-026-W5 | CS | SEE NOTE 4 |
| PRT | 1 | 4 | INNER SHELL | | 165-F-026-W5 | CS | SEE NOTE 4 |
| PRT | 1 | 5 | FLANGE | | 165-F-026-W5 | CS | SEE NOTE 2 |
| PRT | 1 | 6 | LID | | 165-F-026-W2 | CS | SEE NOTE 2 |
| PRT | 1 | 7 | SEAL | B | 165-F-026-W3 | SEE NOTE 3 | SEE NOTE 3 |
| PRT | 1 | 8 | LEAD SHIELD | | 165-F-026-W1 | LEAD | ASTM B29 |
| PRT | 1 | 9 | FILTER SHIELD PLUG | | 165-F-026-W2 | LEAD | ASTM B29 |
| PRT | 1 | 10 | FILTER SHIELD CAP | | 165-F-026-W2 | CS | SEE NOTE 4 |
| PRT | 3 | 11 | PLUG | | 165-F-026-W3 | CS | SEE NOTE 4 |
| PRT | 2 | 12 | SLOTTED SPRING PIN, (Ø3/8 X 1-1/4 LG.) | A | 98296A948 | CS | ASME B18.8.2 |
| PRT | 1 | 13 | SOCKET SET SCREW, Ø1/2-13UNC X 1 LG. | A | 91385A712 | BLK AS | ASTM F912 |
| PRT | 3 | 14 | EYEBOLT, 1/2-13UNC-2A X 1-1/2 LG. | A | 3049T82 | AS | ASTM F541 |
| PRT | 3 | 15 | HEAVY HEX NUT, 1/2-13UNC-2B | A | 95462A033 | ZINC-PLTD | GR 5 |
| PRT | 1 | 16 | PROTECTIVE PLUG, 3/4 PIPE PRESS-FIT | A | 4491K47 | LDPE | - |
| PRT | 15 | 17 | FLANGE HEX HD CAP SCREW, 1/2-13UNC X 1-1/2 LG | A | 92316A714 | BLK AS | SAE J429, GR 8 |

NOMINAL ASSEMBLY WEIGHT: 1726 LB.

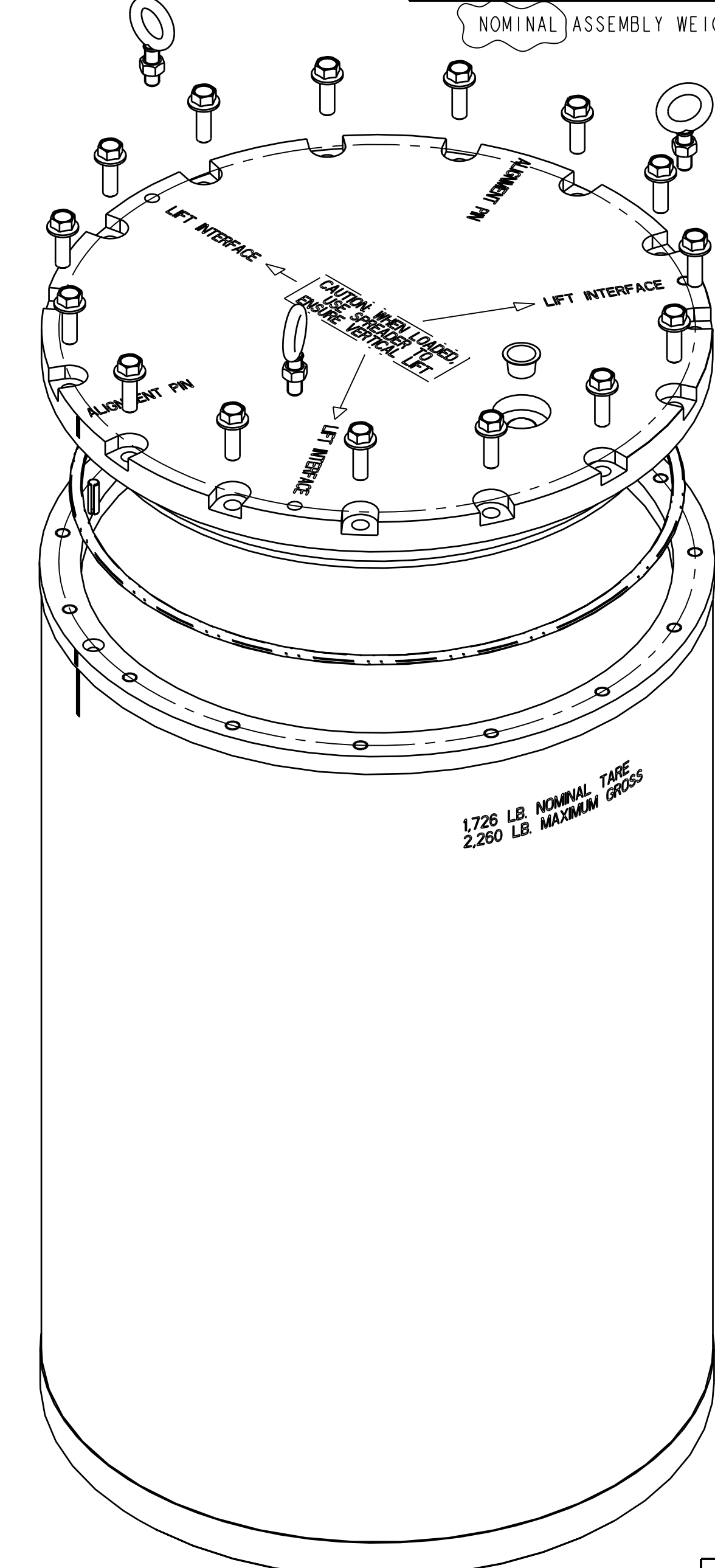
SUPPLIERS

- A. McMASTER CARR OR APPROVED EQUIVALENT
- B. IPOTEC INC. OR APPROVED EQUIVALENT

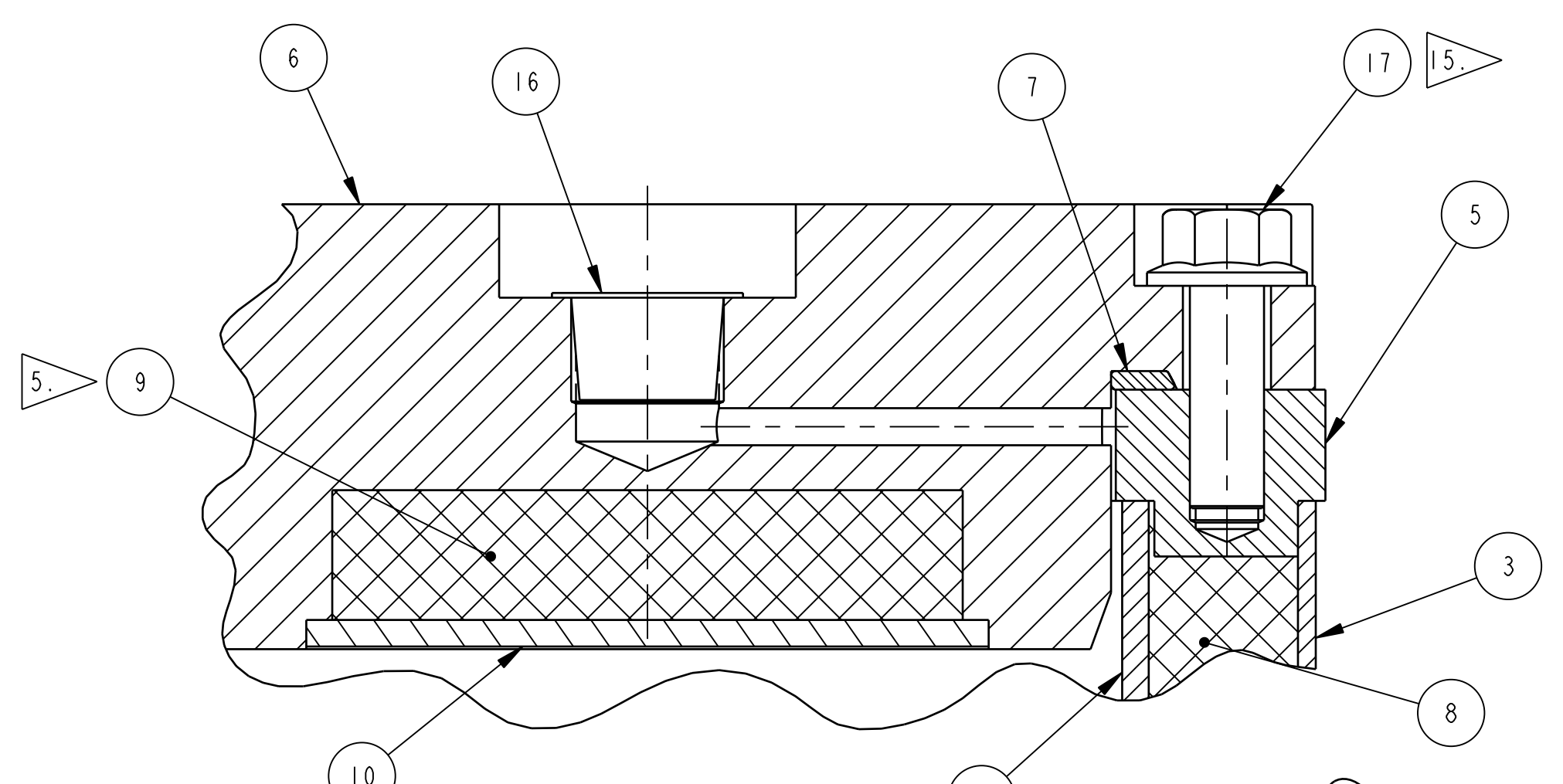
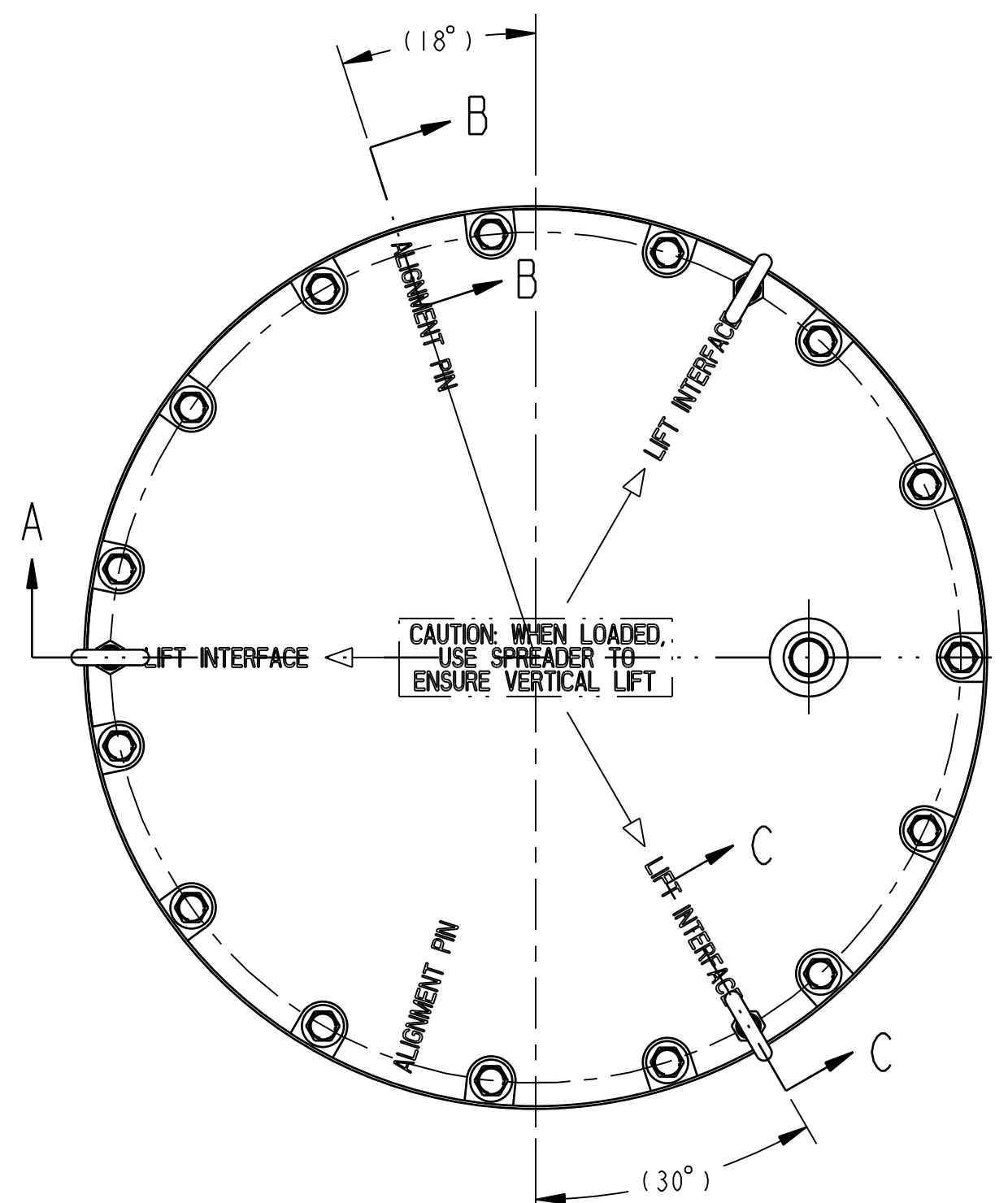
NOTES

CONTINUES ON SHT. 2

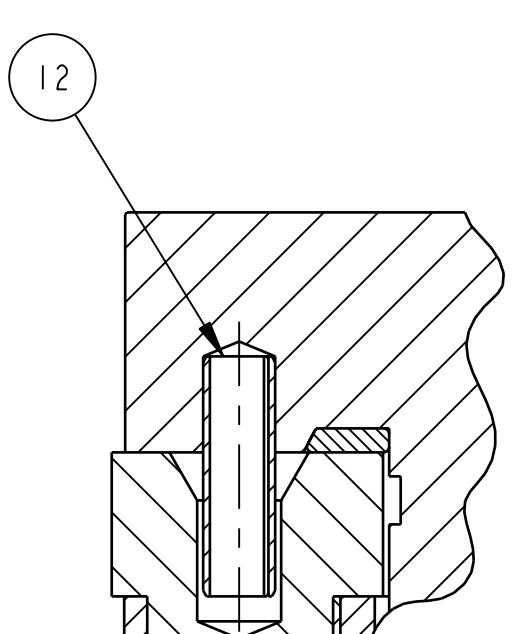
- BREAK OR DEBURR ALL SHARP EDGES TO .015 MIN.
- MATERIAL: ASTM A516, GR 70 (PLATE) NORMALIZED TO FINE GRAIN PRACTICE OR ASTM A266, GR 2 (FORGING) NORMALIZED TO FINE GRAIN PRACTICE.
- MATERIAL: SILICONE SPONGE, SILICONE ADHESIVE ONE SIDE, CLOSED-CELL, MEDIUM-SOFT (SS20).
- MATERIAL: ASTM A1011, GR 45, SS (STRUCTURAL STEEL) OR ASTM A36.
- INSTALL USING A CLASS FN2 FORCE FIT PER ANSI B4.1. OR OPTIONALLY, LEAD WOOL MAY BE USED AS REQUIRED FOR TIGHT FIT.
- RECOMMENDED FOR LIFTING: UTILIZE A 1/2 HEAVY-DUTY SAFETY HOIST RING, McMASTER CARR, P/N 3052187 OR ENGINEER APPROVED EQUAL.
- BODY ASSEMBLY INVERTED FOR LEAD POUR CONFIGURATION.
- FINAL MACHINED DIMENSIONS IMPLIED ON BODY, (POST-LEAD POUR).
- AFTER LEAD POUR, CUT RISERS OFF BASE, FLUSH.
- STENCIL AFTER PAINTING WITH 1/4 IN. MIN HIGH CONTRASTING CHARACTERS: (WHERE SHOWN)
 - ALIGNMENT PIN MARKS (AS SHOWN)
 - "CAUTION: WHEN LOADED, USE SPREADER TO ENSURE VERTICAL LIFT"
 - "ALIGNMENT PIN" (2X)
 - "LIFT INTERFACE" (3X)
 - "1,726 LB. NOMINAL TARE
2,260 LB. MAXIMUM GROSS" (AS SHOWN)
- UP TO 1/32 WELD REINFORCEMENT ALLOWED.
- BLAST AND PAINT/COAT ALL EXPOSED EXTERIOR SURFACES, EXCLUDING INTERFACING/THEADED HOLES AND ASSOCIATED COUNTERBORES.
- MACHINED FROM 1 IN. THK LEAD PLATE.
- FABRICATION OPTION: LID AND BODY MAY BE MATCH DRILLED AND SERIALIZED TO DEFAULT DRAWING TOLERANCES IN LIEU OF POSITIONAL GEOMETRIC TOLERANCES.



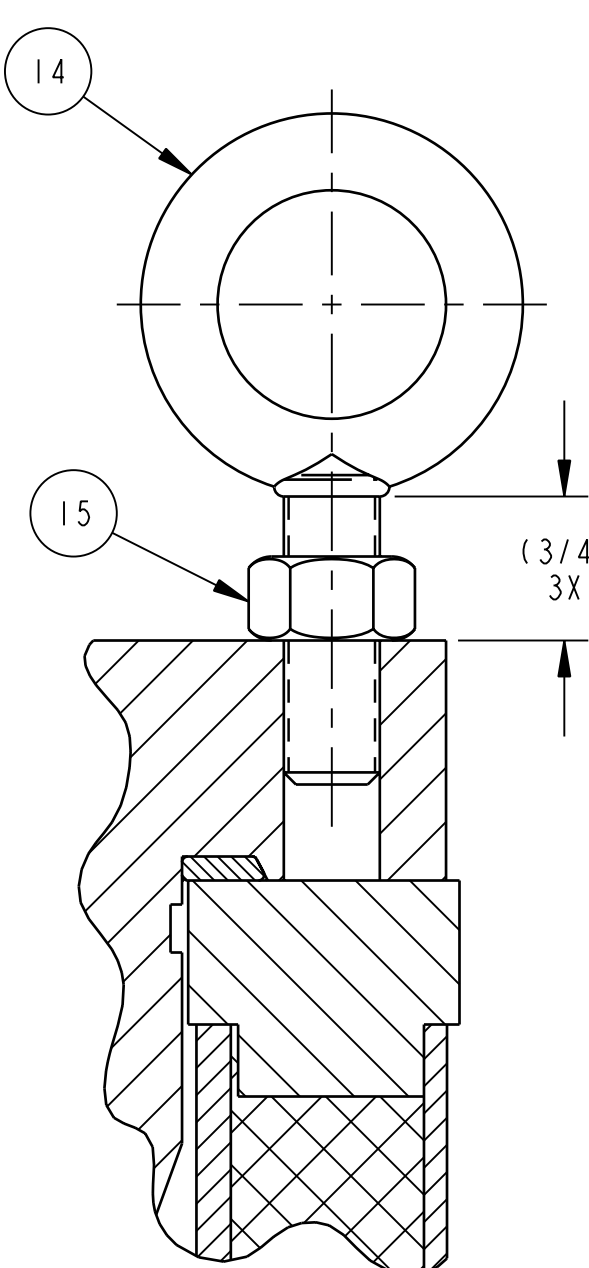
1,726 LB. NOMINAL TARE
2,260 LB. MAXIMUM GROSS



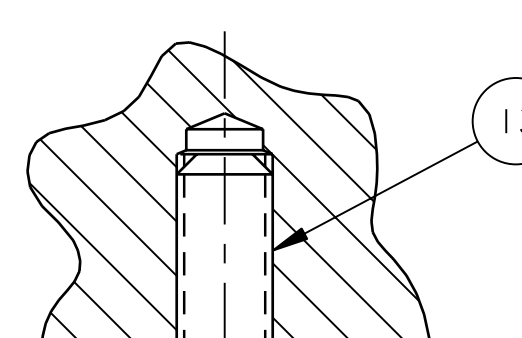
DETAIL 1
SCALE 1:1



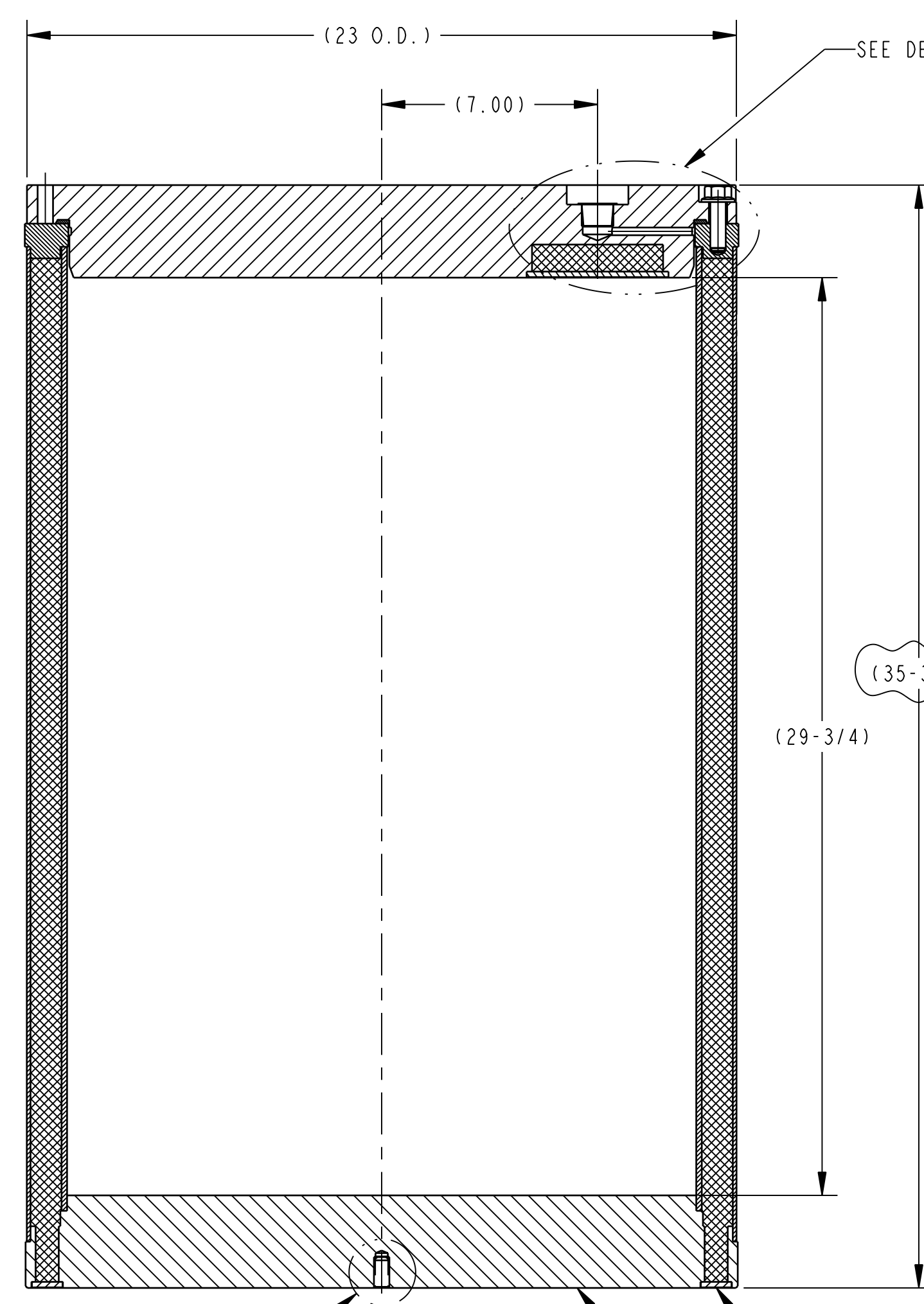
SECTION B-B
SCALE 1:1



SECTION C-C
SCALE 1:1



DETAIL 2
SCALE 1:1



SECTION A-A

1 SHIELDED CONTAINER ASSEMBLY
(EYEBOLTS REMOVED FOR CLARITY)

RELEASE AUTHORIZATION
PROTOTYPE FABRICATION ONLY

REFERENCE VIEW

| INDEX CODE NUMBER | | | | |
|-------------------|-----|----------|----|--------|
| SYSTEM | WBE | DWG TYPE | CL | VENDOR |
| PT03 | 165 | 01300 | 44 | 240 |

| | |
|---------------------------------------|------------------------|
| DIM. IN INCHES U.N.O. | SFTY: N/A |
| [] DENOTES mm U.N.O. | APPD: N/A |
| UNLESS OTHERWISE SPECIFIED TOLERANCES | DM: BOB BEEMAN 8/13/07 |
| 2 PL DEC 3 PL DEC ANGLES 125 | DOE: N/A |
| ±.03 ±.010 ±.5° | CAD SOURCE |
| FRACTIONS: ±1/16 | PRO/ENGINEER |

| | | | | | | | |
|-----|---------------------|---------|---------|---------|----------|-------|-----|
| REV | ISSUE DESCRIPTION | DFTR | CHKR | COG | DFTG MGR | ECO | PWR |
| A | REVISED PER ADD. #1 | JMN | BAD | TD | BB | 11834 | N/A |
| | | 9/13/07 | 9/14/07 | 9/14/07 | 9/14/07 | | |

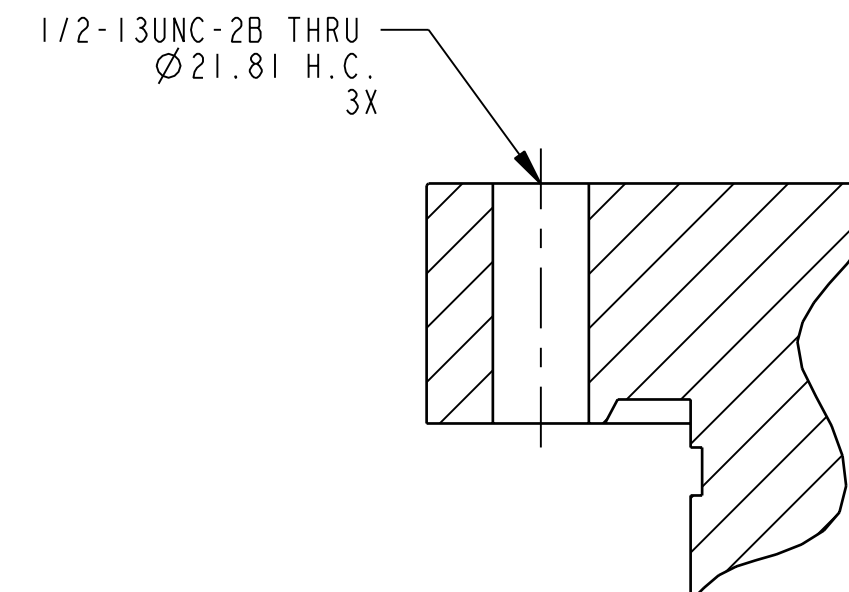
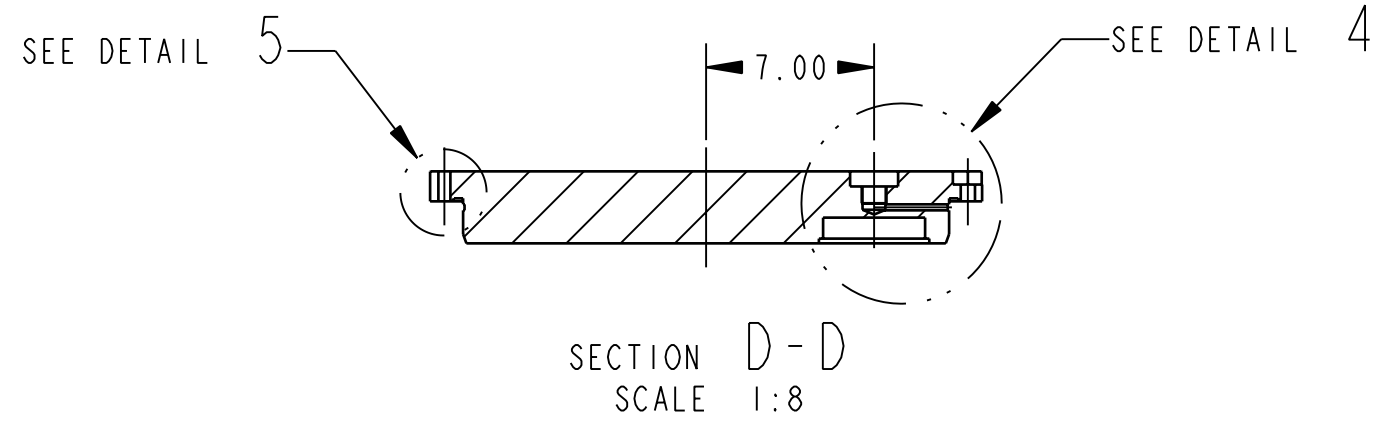
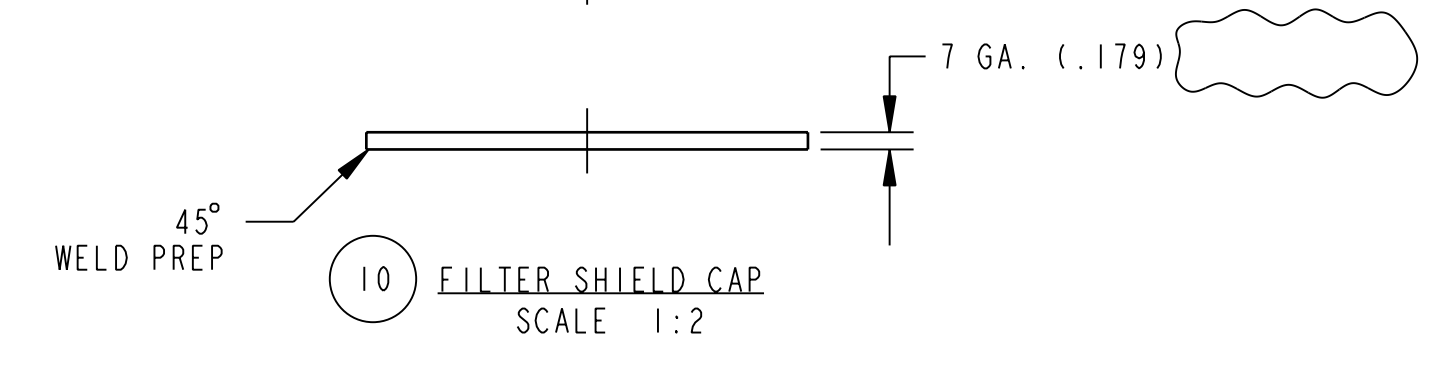
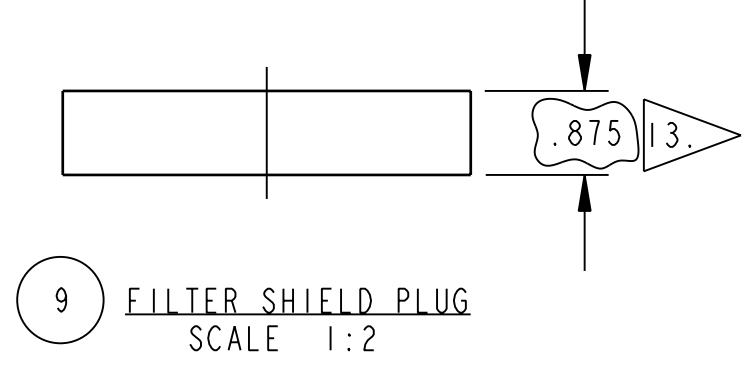
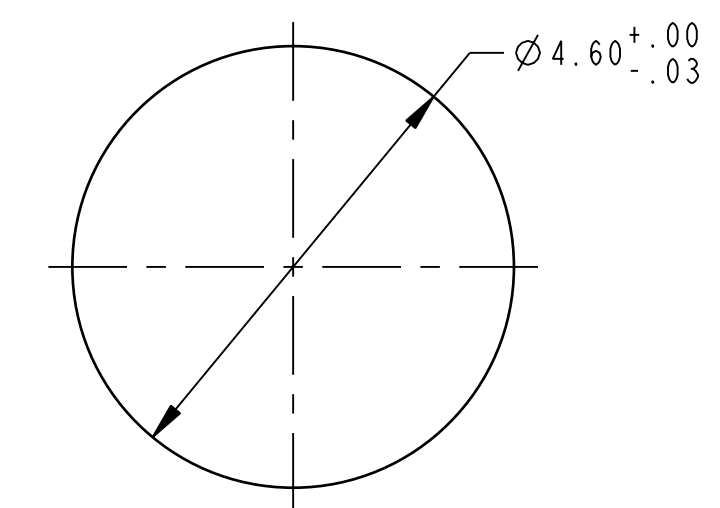
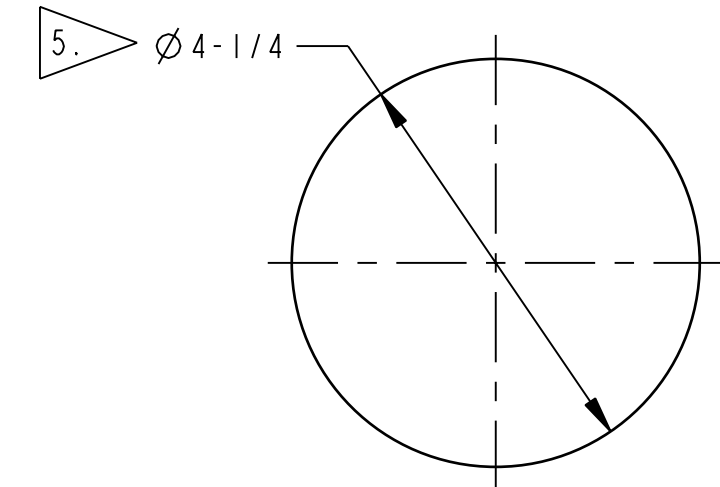
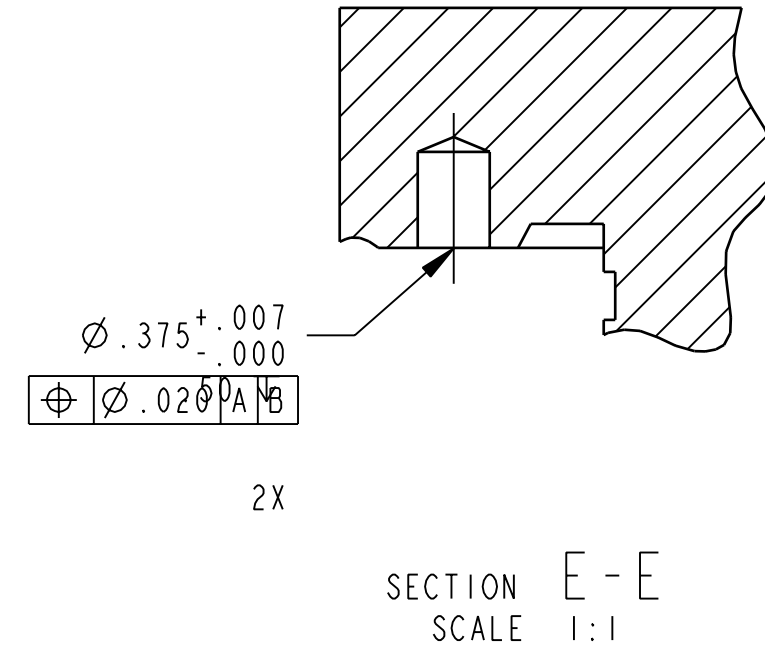
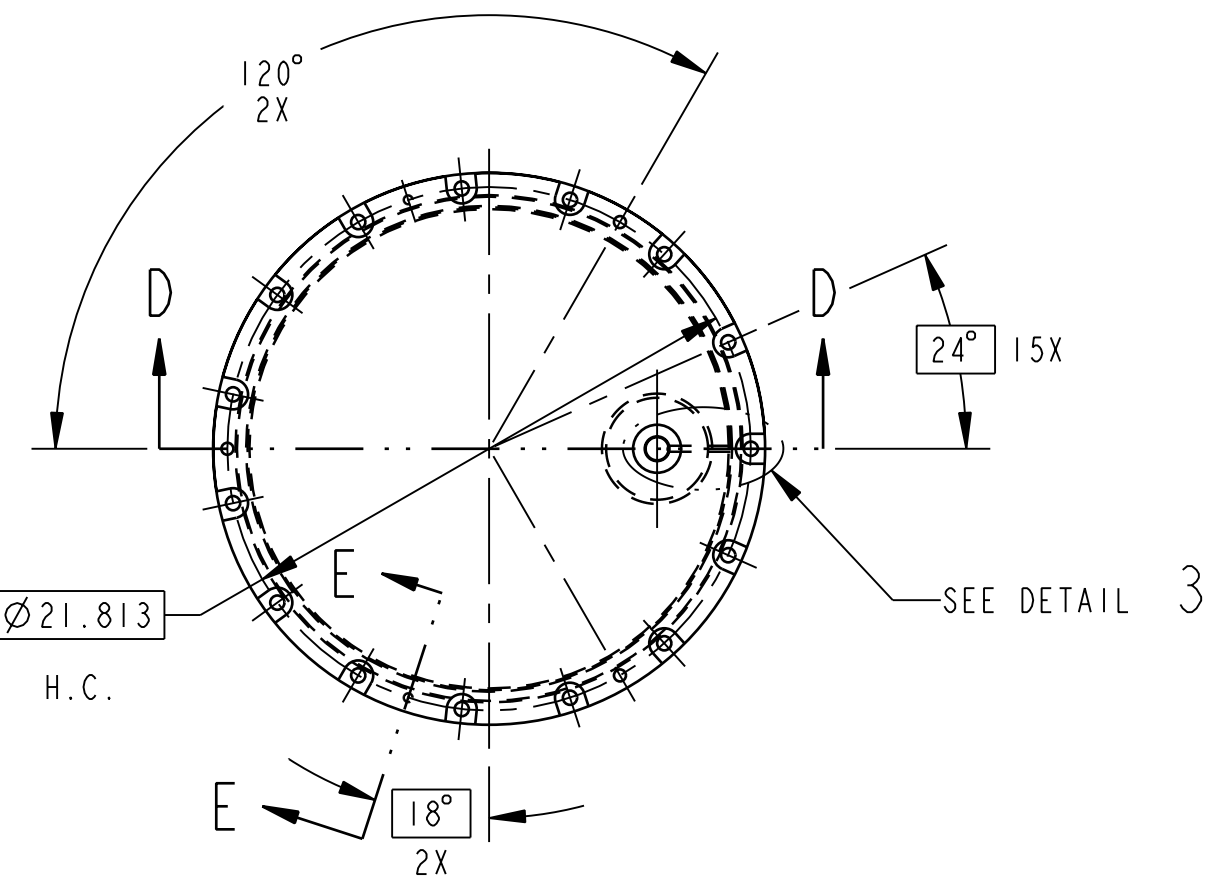
THIS DRAWING CREATED BY ENGINEERING CHANGE ORDER (ECO): 11834 PWR: N/A

U.S. DEPARTMENT OF ENERGY

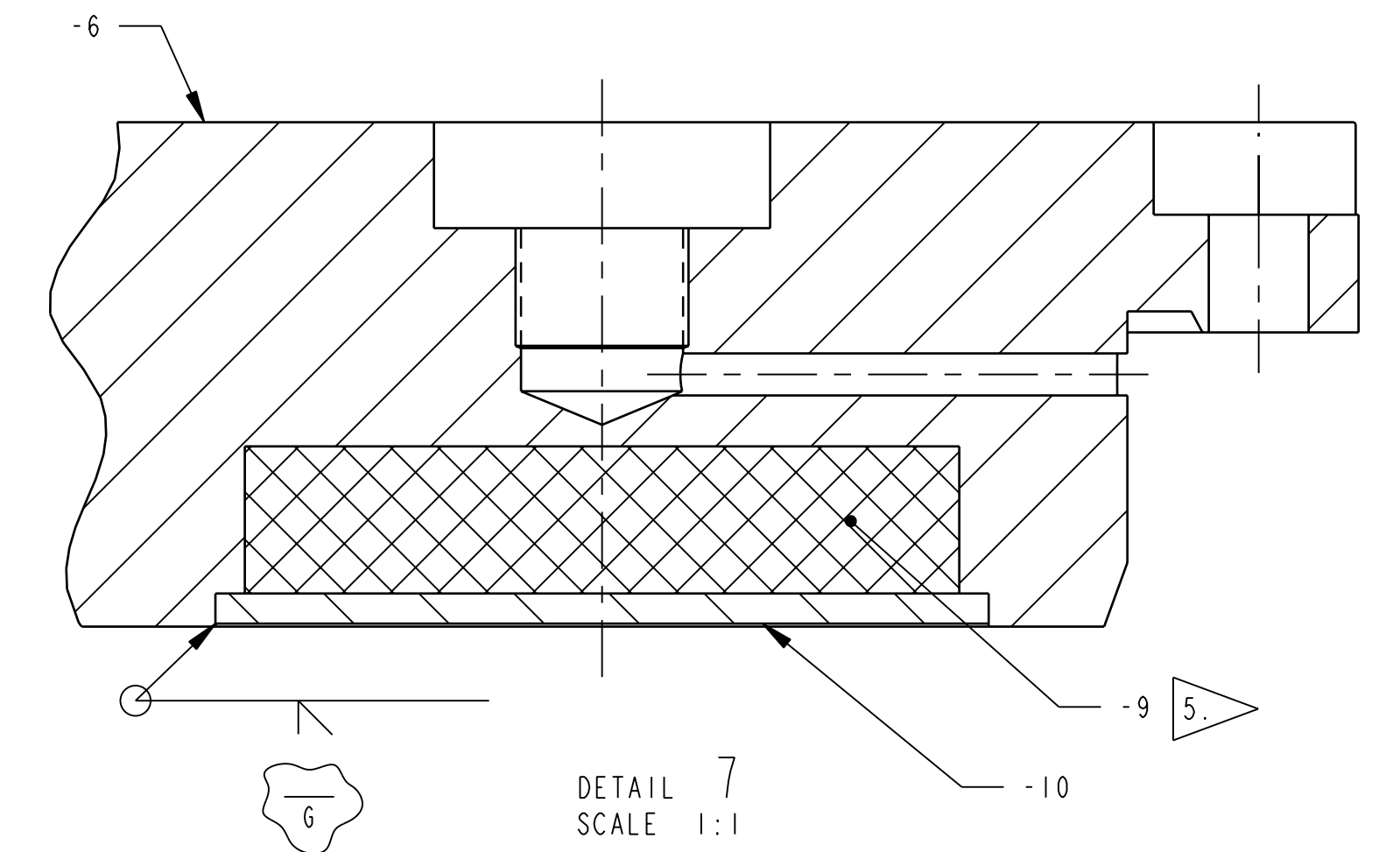
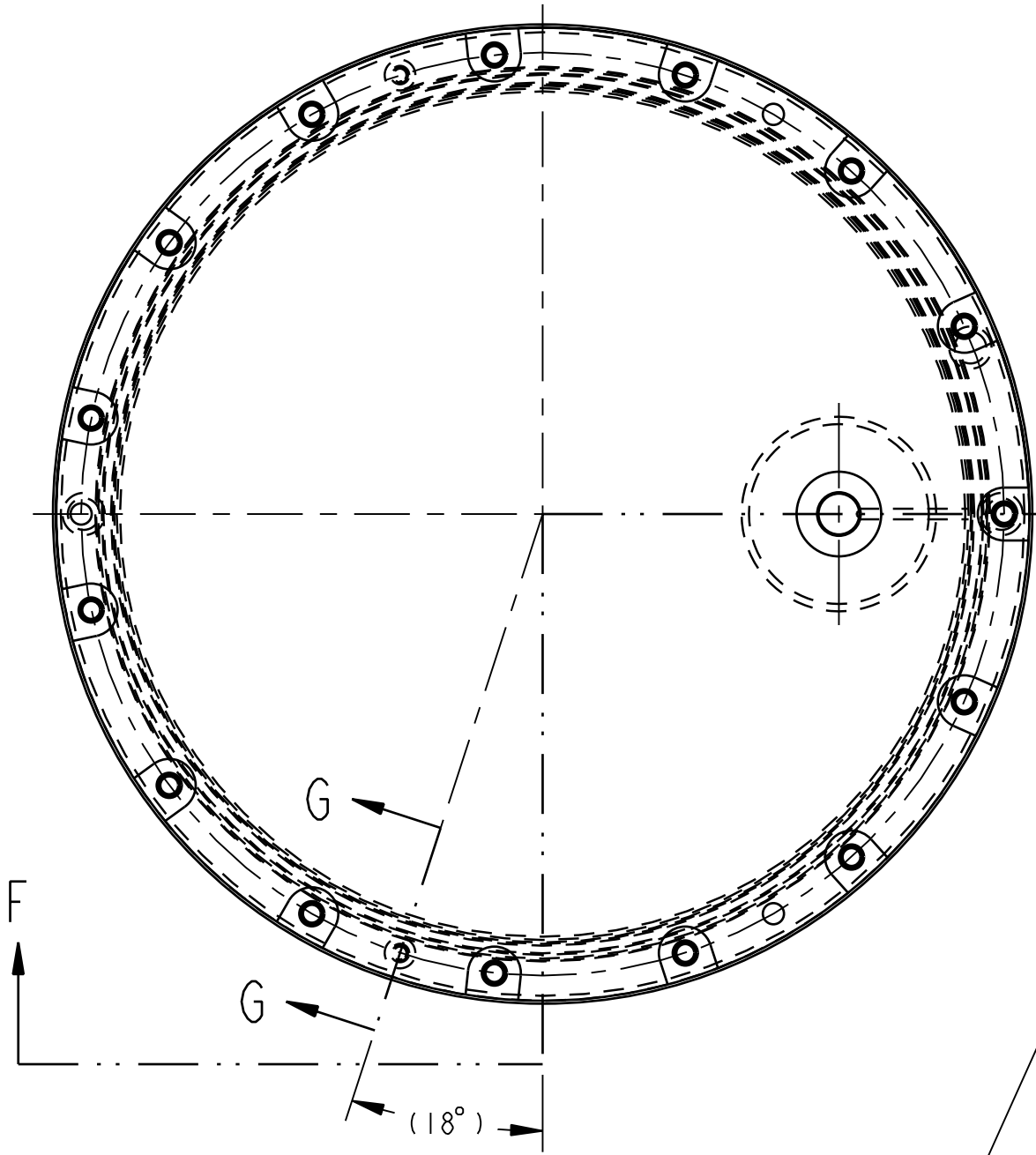


| | |
|----------|-----------------------------|
| TITLE | SHIELDED CONTAINER ASSEMBLY |
| SIZE SYS | D PT03 |
| DWG NO | 165-F-026-W1 |
| SCALE | 1:4 |
| REV | A |

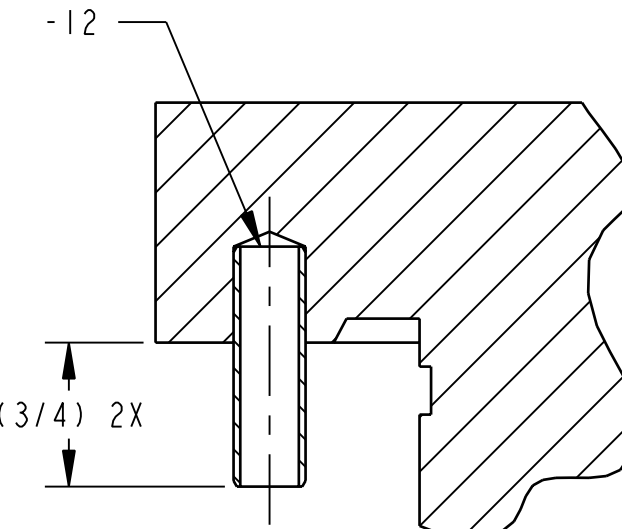
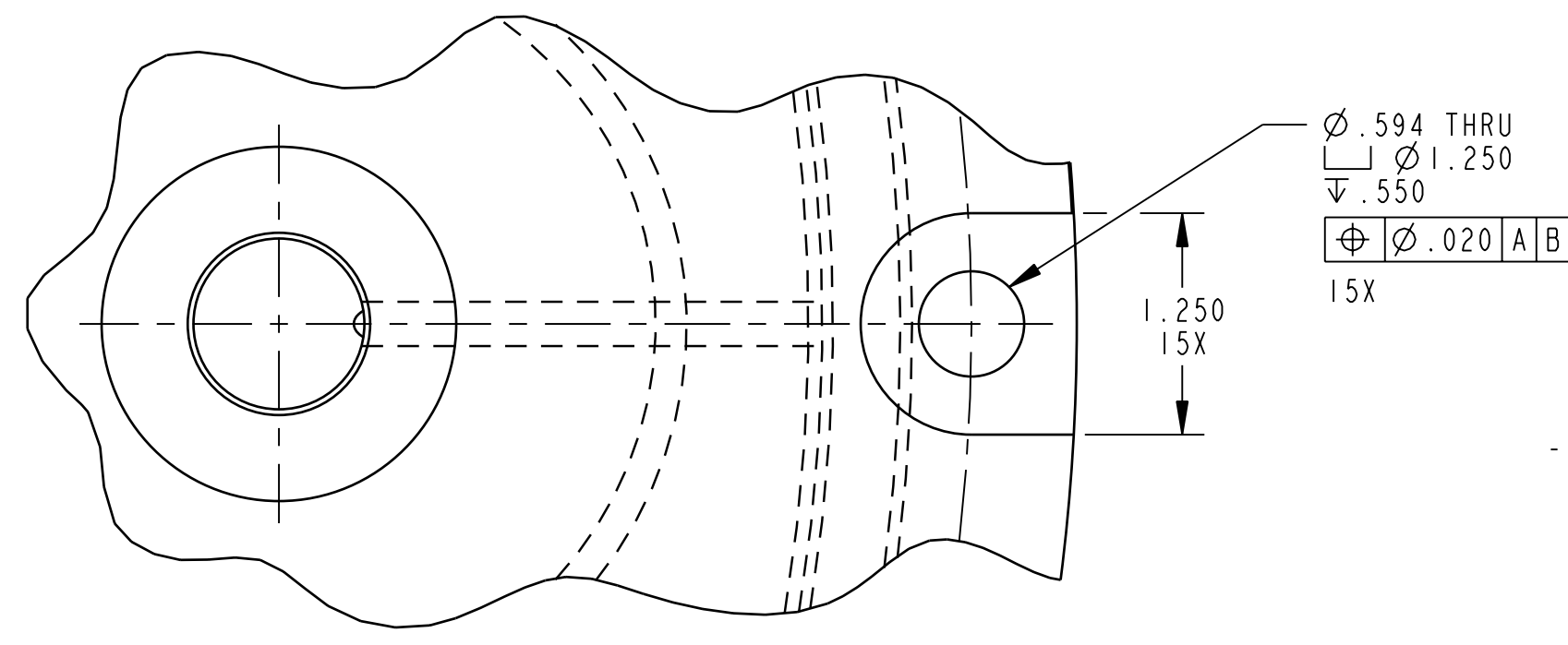
THIS DRAWING TAKEN FROM: N/A
VENDOR: N/A



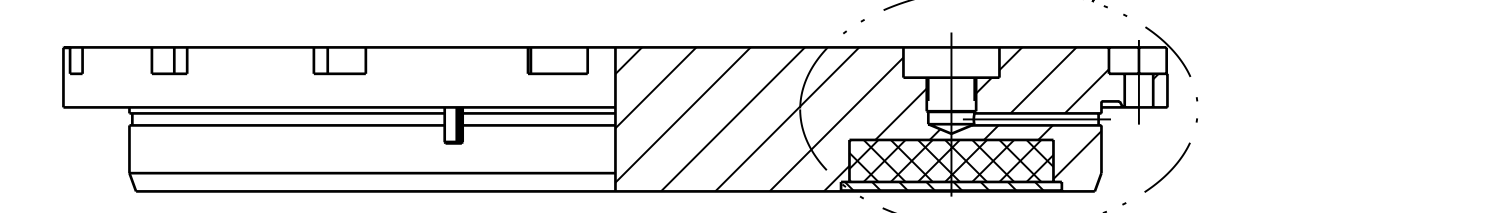
DETAIL 5 SCALE 1:1



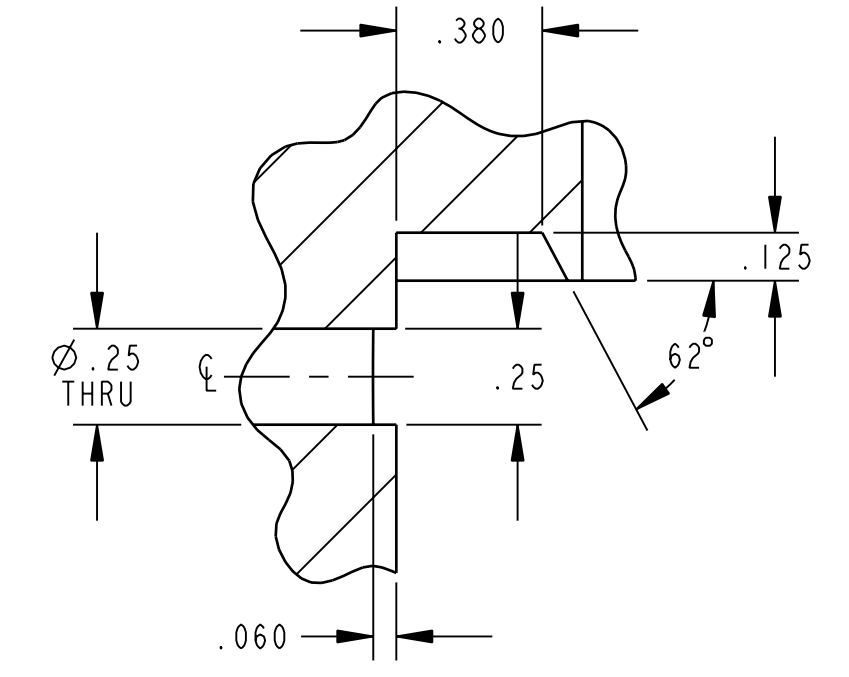
DETAIL 7 SCALE 1:1



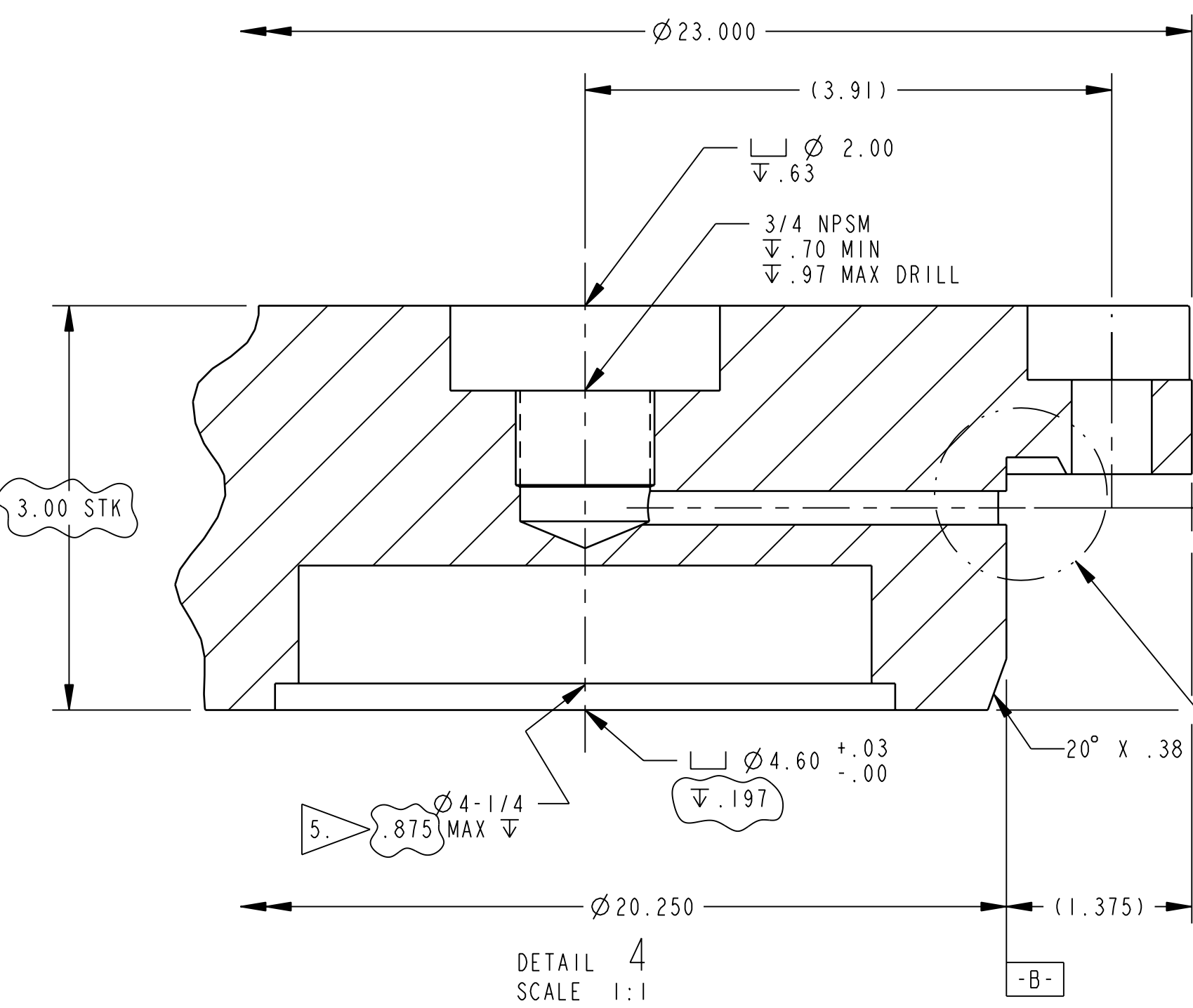
SECTION G-G SCALE 1:1



SECTION F-F LID ASSEMBLY



DETAIL 6 SCALE 2:1



DETAIL 4 SCALE 1:1

RELEASE AUTHORIZATION
PROTOTYPE FABRICATION ONLY

| INDEX CODE NUMBER | | | | |
|-------------------|-----|----------|----|--------|
| SYSTEM | WBE | DWG TYPE | CL | VENDOR |
| PT03 | 165 | 01300 | 44 | 240 |

| | |
|---------------------------------------|------------------------|
| DIM. IN INCHES U.N.O. | SFTY: N/A |
| [] DENOTES mm U.N.O. | APPD: N/A |
| UNLESS OTHERWISE SPECIFIED TOLERANCES | DM: BOB BEEMAN 8/13/07 |
| 2 PL DEC 3 PL DEC ANGLES 125 | DOE: N/A |
| FRACTIONS: ±1/16 | CAD SOURCE |
| | PRO/ENGINEER |

NOTES

- 15. TIGHTEN CLOSURE BOLTS (ITEM 17) TO 85±10 LB-FT TORQUE DURING FINAL ASSEMBLY.
- 16. IT IS RECOMMENDED THAT SEAL (ITEM 7) BE ONE-PIECE CONSTRUCTION AND INSTALLED WITHOUT STRETCHING.
- 17. FABRICATION OPTION: CHAMFER 60° X .130 (FROM HORIZONTAL) LEAD-IN TO AID IN ASSEMBLY.

| | | | | | | | |
|-----|---------------------|---------|---------|---------|----------|-------|-----|
| REV | ISSUE DESCRIPTION | DFTR | CHKR | COG | DFTG MGR | ECO | PWR |
| A | REVISED PER ADD. #1 | JMN | BAD | TD | BB | 11834 | N/A |
| | | 9/13/07 | 9/14/07 | 9/14/07 | 9/14/07 | | |

THIS DRAWING CREATED BY ENGINEERING CHANGE ORDER (ECO): 11834 PWR: N/A

U.S. DEPARTMENT OF ENERGY

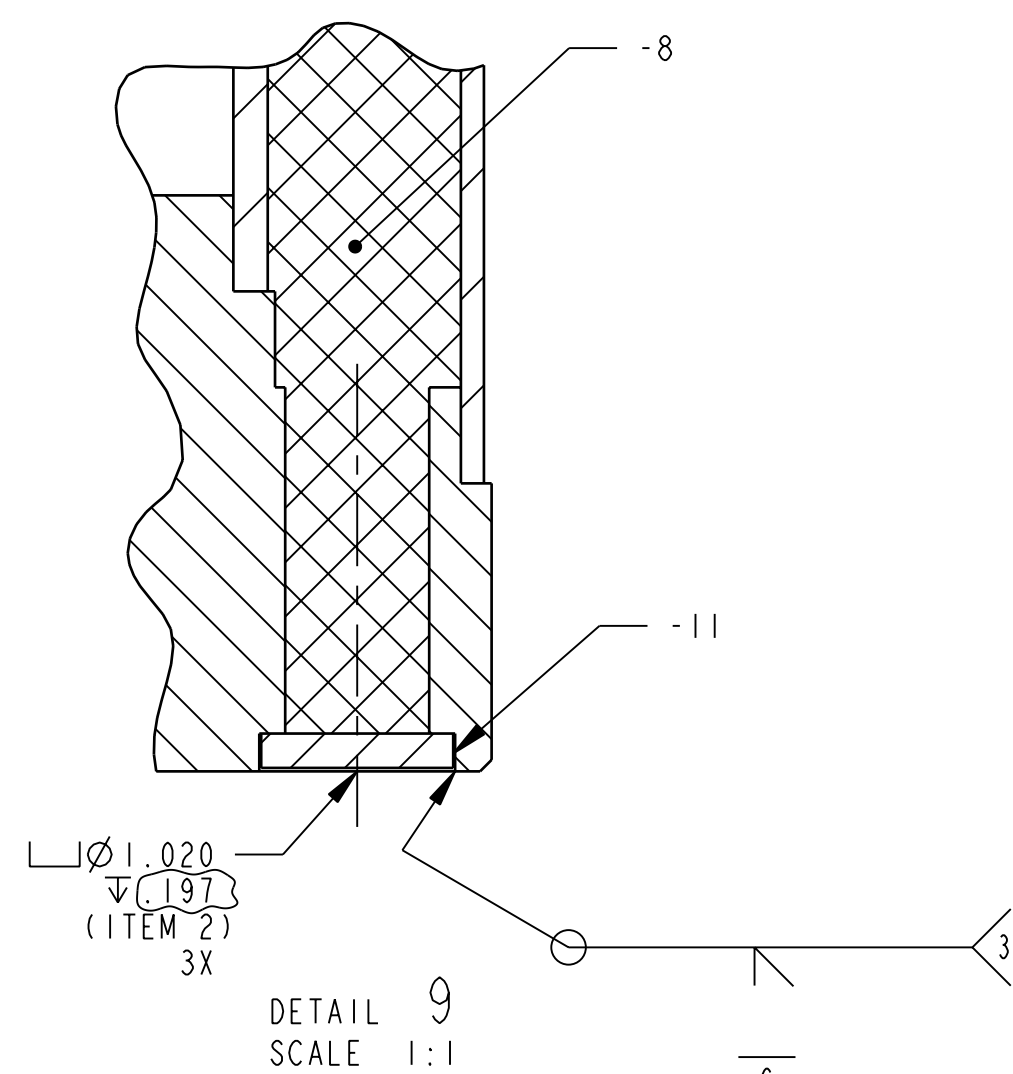
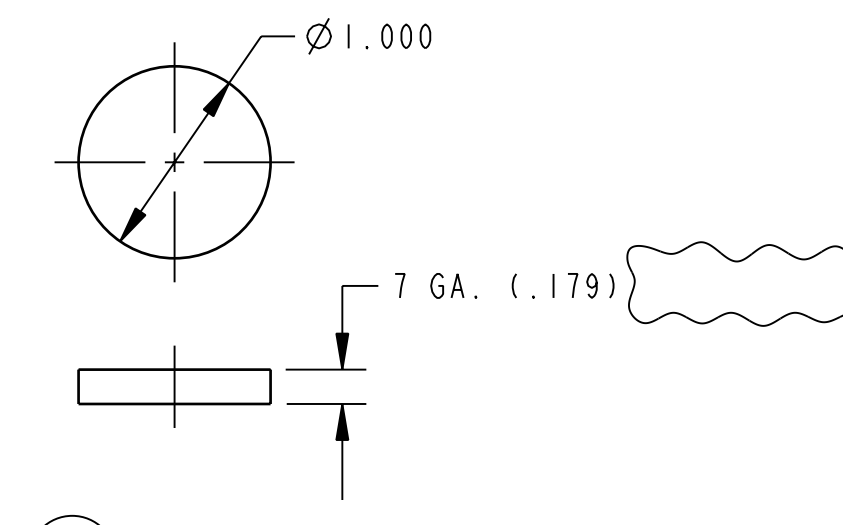
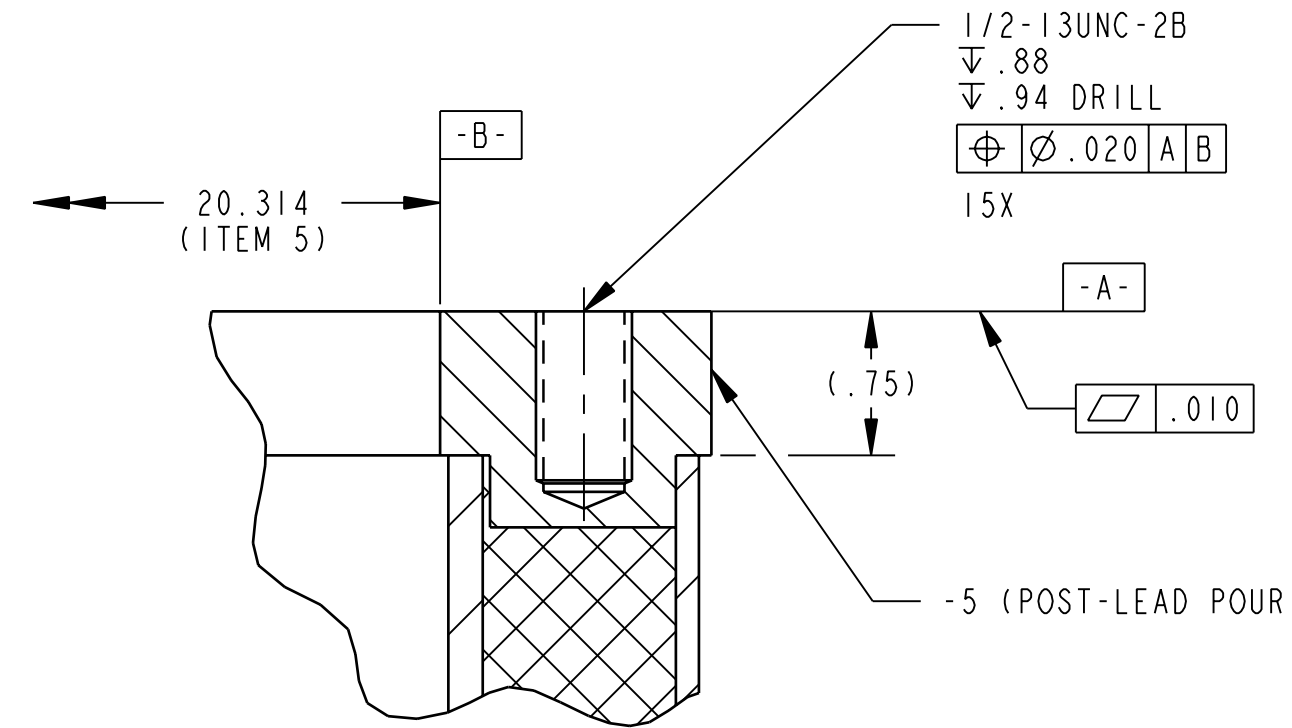
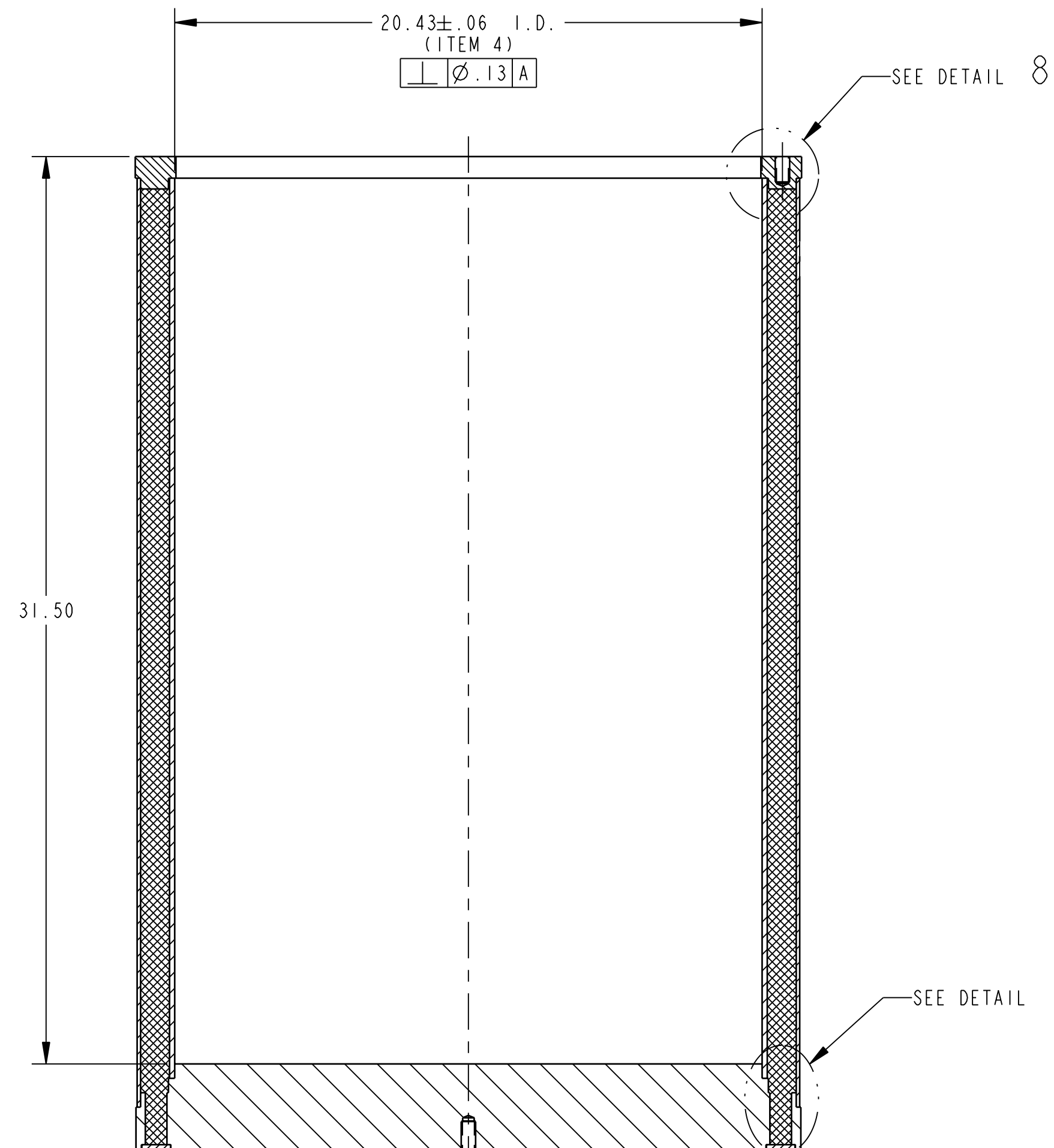
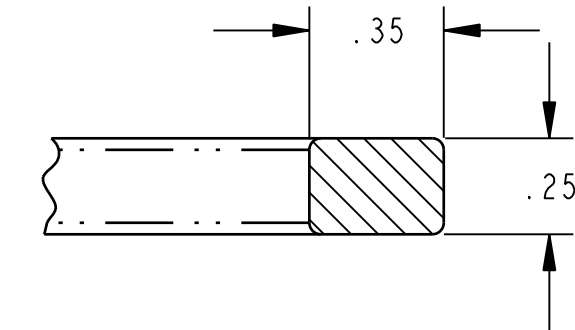
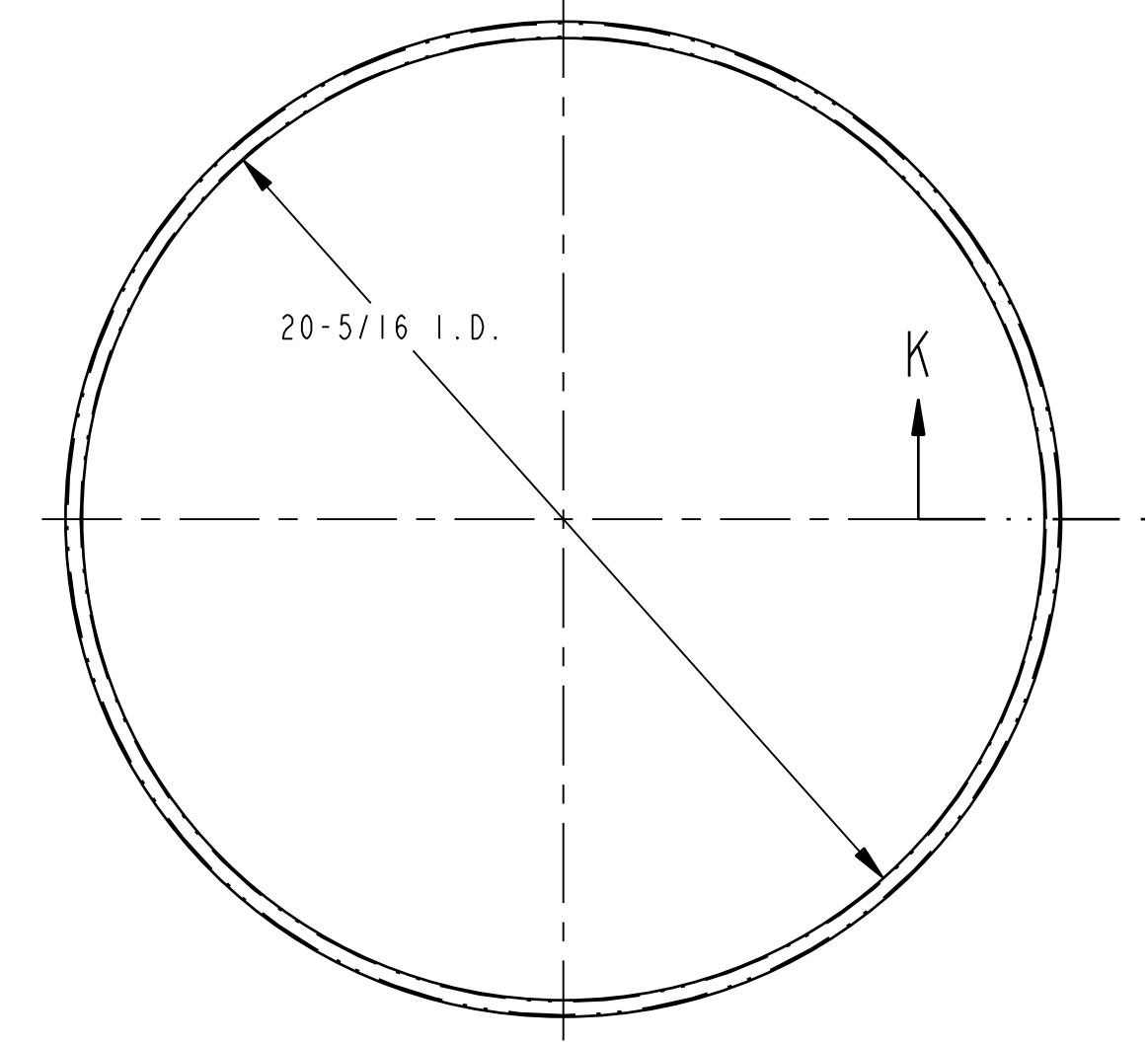
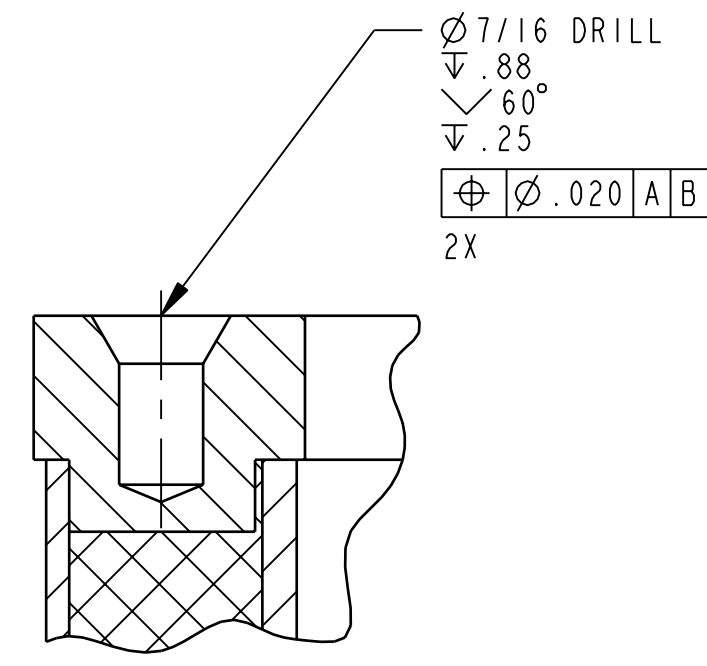
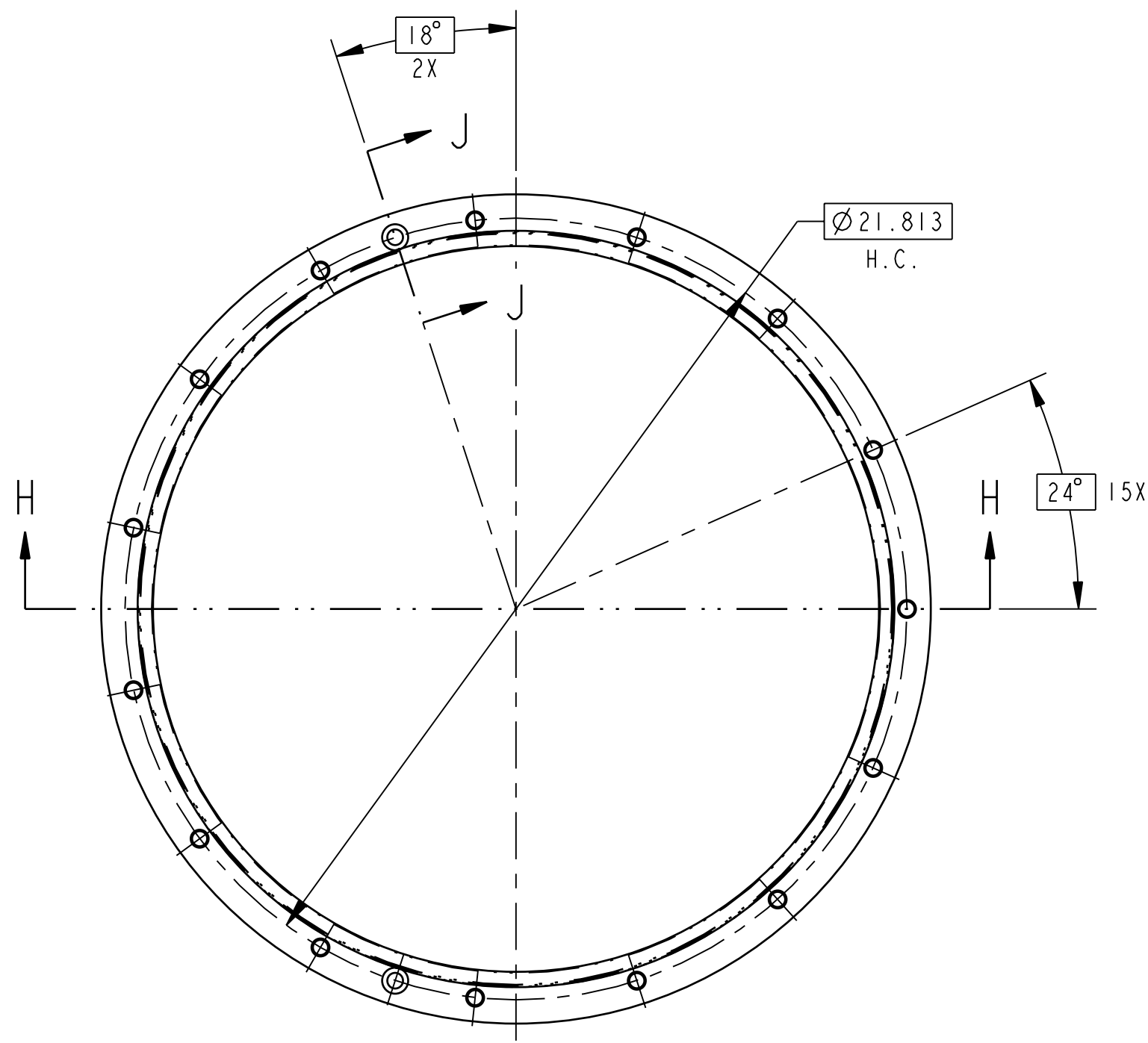


Waste Isolation Pilot Plant

SHIELDED CONTAINER ASSEMBLY LID

| | | | |
|--------|------|----------------------------|-----|
| SIZE | SYS | DWG NO | REV |
| D | PT03 | 165-F-026-W2 | A |
| SCALE: | 1:4 | INTERPRET DWG PER ANSI Y14 | |

THIS DRAWING TAKEN FROM: N/A VENDOR: N/A



RELEASE AUTHORIZATION
PROTOTYPE FABRICATION ONLY

| INDEX CODE NUMBER | | | | |
|-------------------|-----|----------|----|--------|
| SYSTEM | WBE | DWG TYPE | CL | VENDOR |
| PT03 | 165 | 01300 | 44 | 240 |

| | |
|---------------------------------------|------------------------|
| DIM. IN INCHES U.N.O. | SFTY: N/A |
| [] DENOTES mm U.N.O. | APPD: N/A |
| UNLESS OTHERWISE SPECIFIED TOLERANCES | APPD: N/A |
| 2 PL DEC 3 PL DEC ANGLES 125 | DM: BOB BEEMAN 8/13/07 |
| ±.03 ±.010 ±.5° | DOE: N/A |
| FRACTIONS: ±1/16 | CAD SOURCE |

| | | | | | | | |
|-----|---------------------|------|------|------|----------|-------|-----|
| A | REVISED PER ADD. #1 | JMN | BAD | TD | BB | 11834 | N/A |
| REV | ISSUE DESCRIPTION | DFTR | CHKR | COG | DFTG MGR | ECO | PWR |
| | | DATE | DATE | DATE | DATE | | |

THIS DRAWING CREATED BY ENGINEERING CHANGE ORDER (ECO): 11834 PWR: N/A

DFTR: J.M. NEVAREZ 7/18/07
CHKR: B. DAY FOR RAJ 8/9/07
COG: ANTHONY DONNER 8/9/07
CM: TODD SELLMER 8/13/07
QA: BRUCE G. FAULK 8/13/07

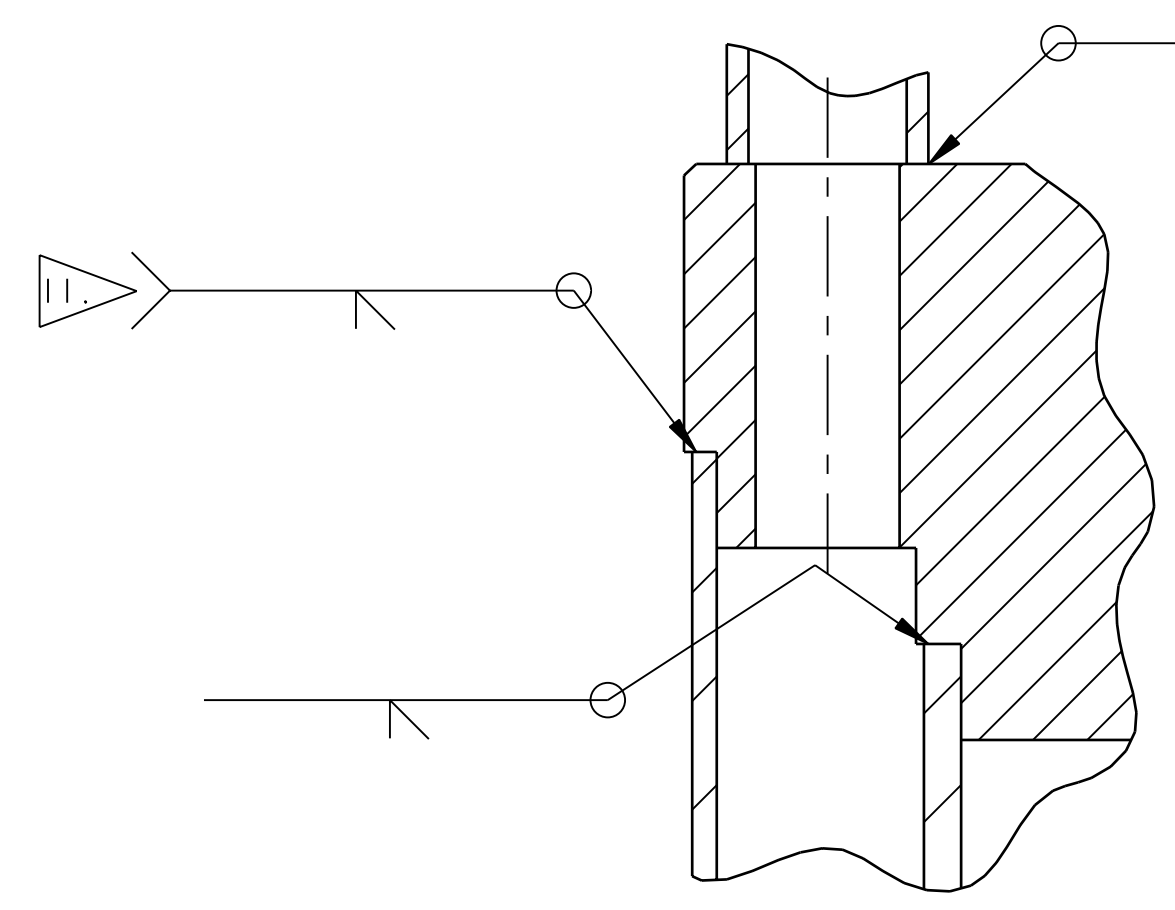
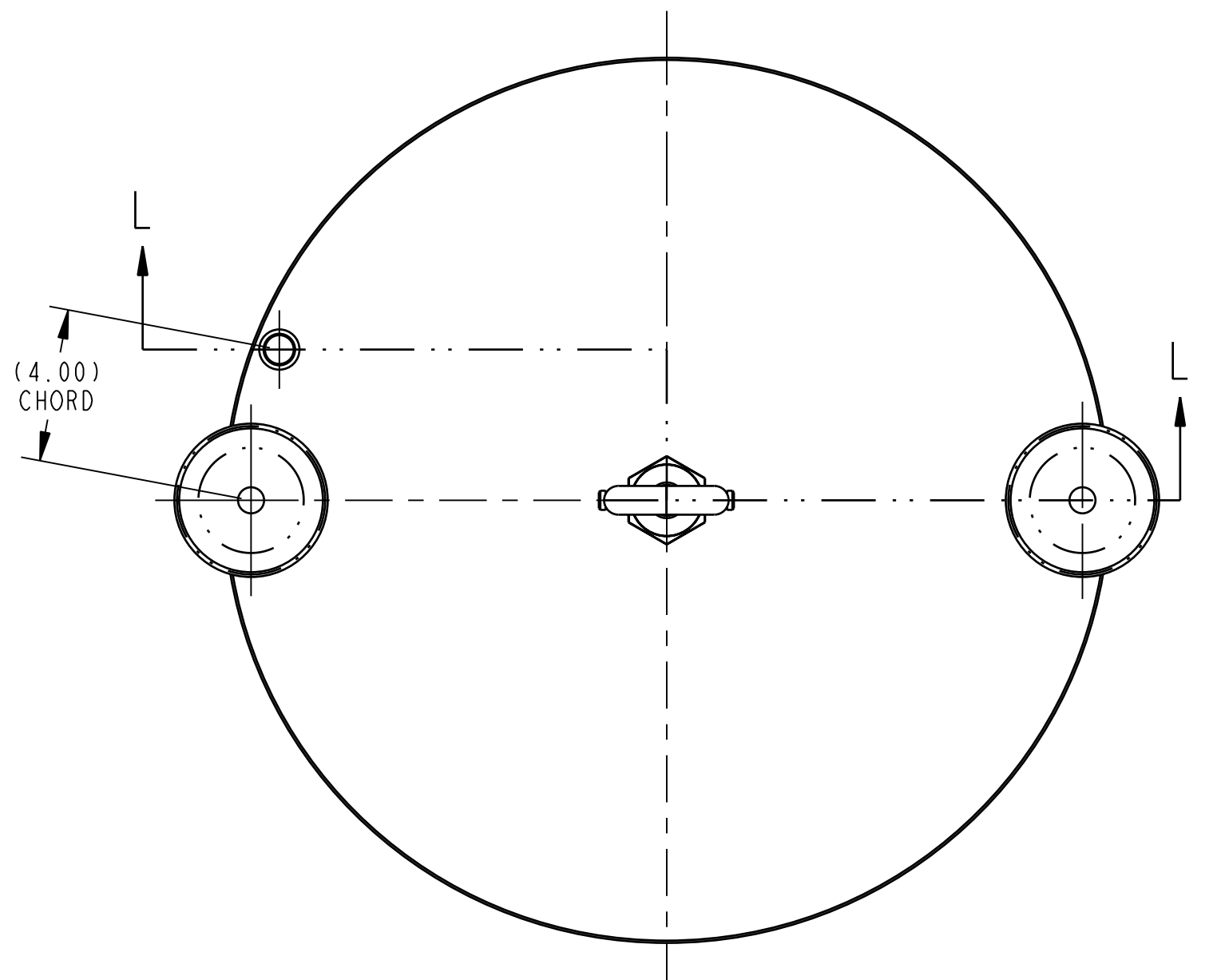
U.S. DEPARTMENT OF ENERGY



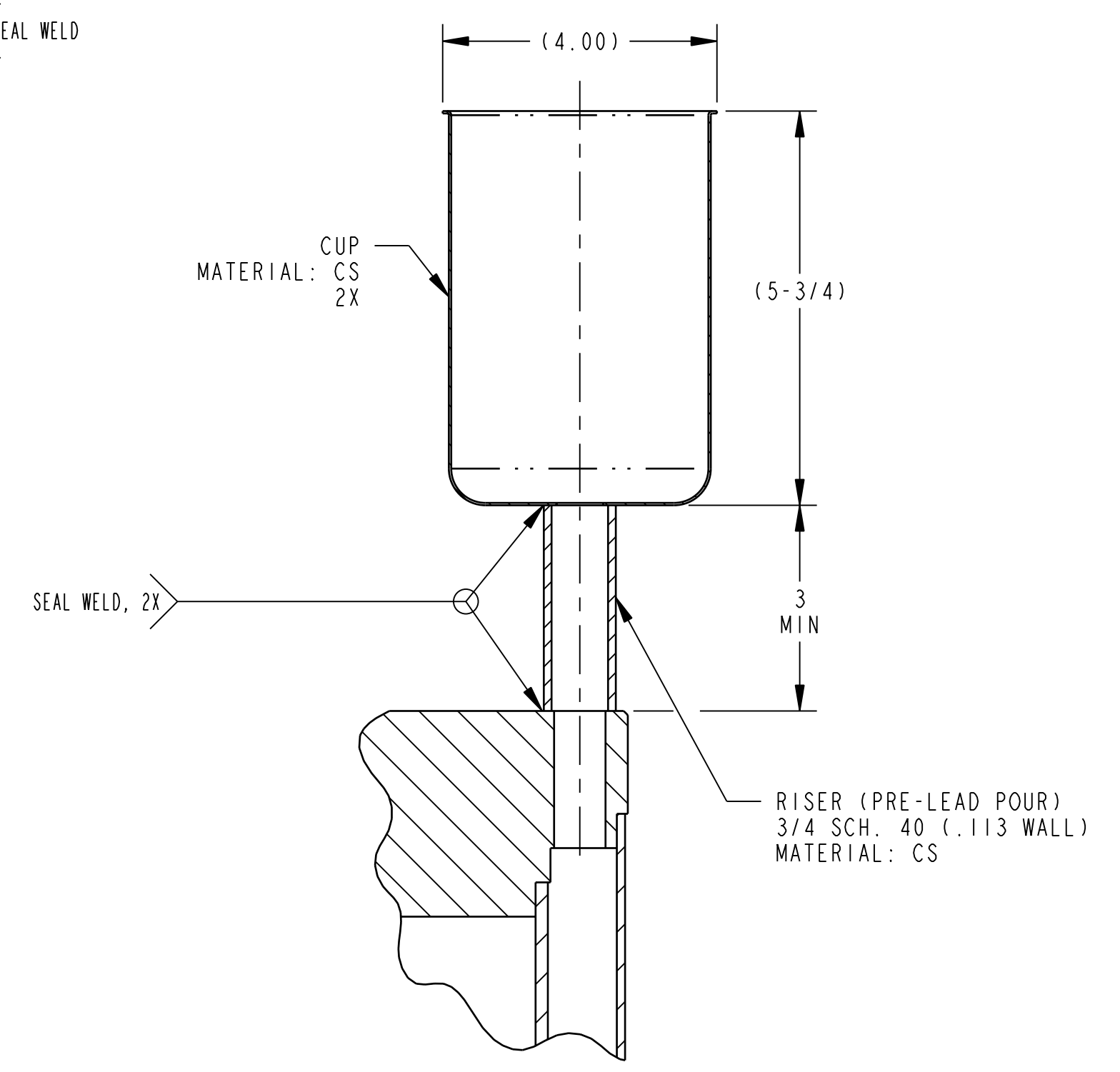
Waste Isolation Pilot Plant
TITLE

SHIELDED CONTAINER ASSEMBLY
BODY (POST-LEAD POUR)

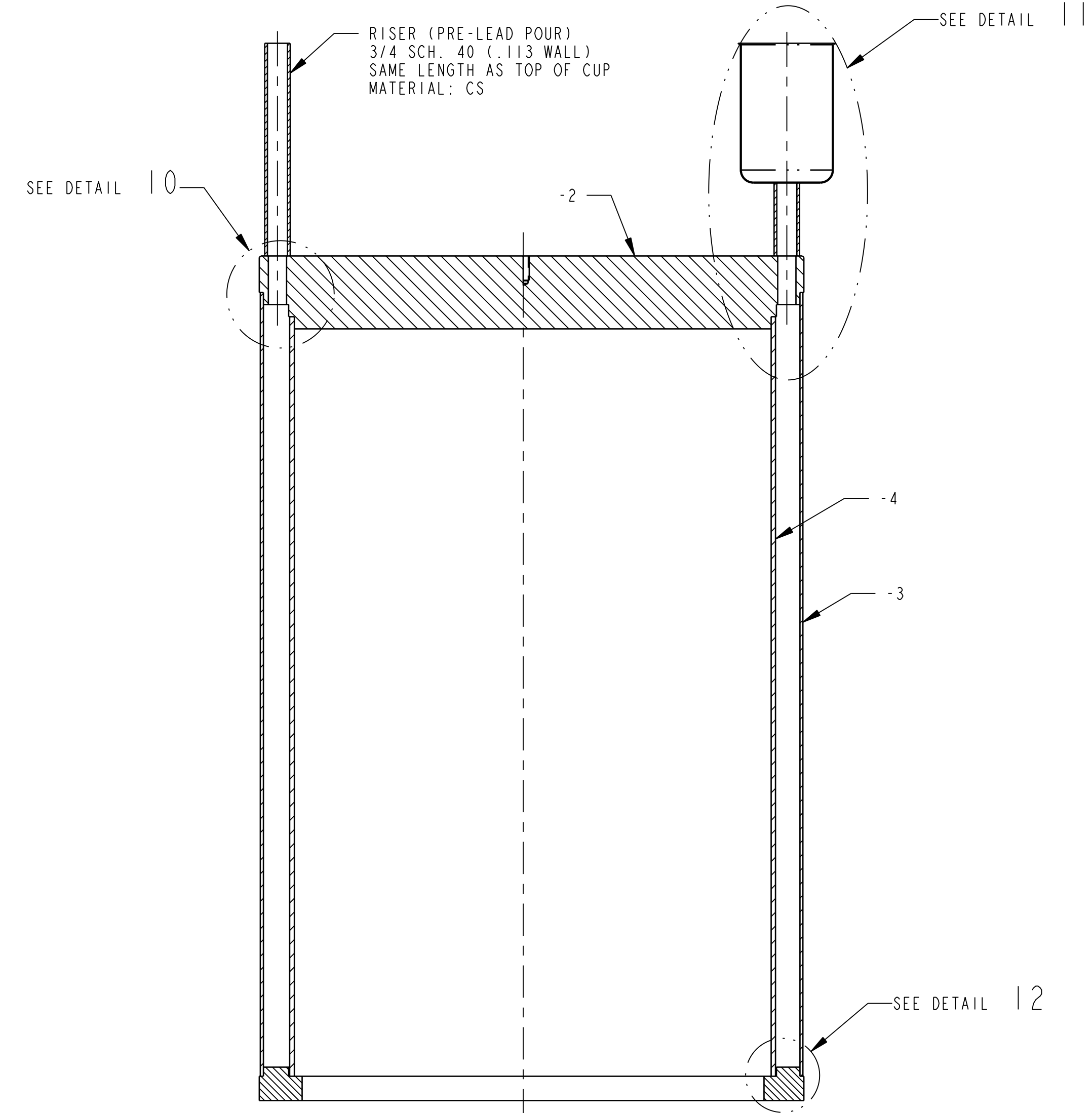
| | | |
|--------------|------------------------------|-----|
| SIZE SYS | DWG NO | REV |
| D PT03 | 165-F-026-W3 | A |
| SCALE: 1:4 | INTERPRET DWG PER ANSI Y14 | |
| PRO/ENGINEER | THIS DRAWING TAKEN FROM: N/A | |
| | VENDOR: N/A | |



DETAIL 10
SCALE 1:1

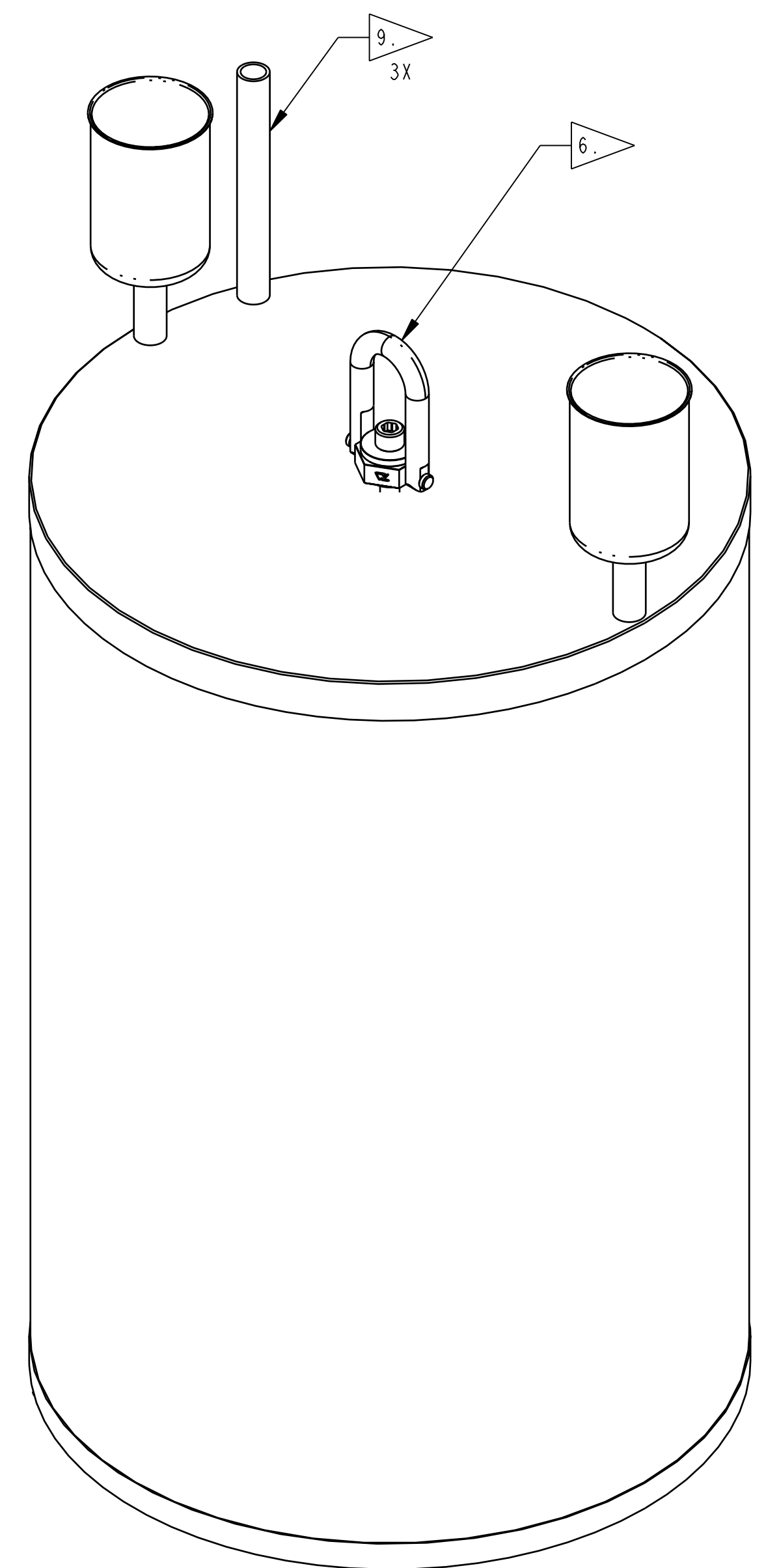


DETAIL 11
SCALE 1:2

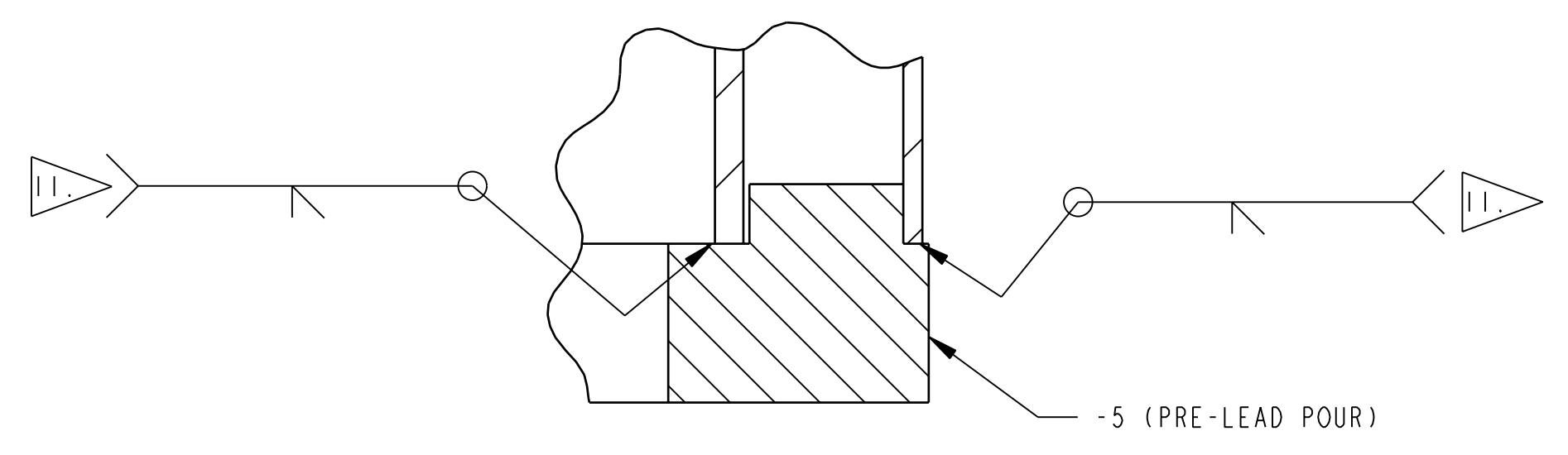


SECTION L-L

7. BODY, (PRE-LEAD POUR)
(HOIST RING REMOVED FOR CLARITY)



7. REFERENCE VIEW



DETAIL 12
SCALE 1:1

RELEASE AUTHORIZATION
PROTOTYPE FABRICATION ONLY

| | | | | | | | |
|-----|---------------------|---------|---------|---------|----------|-------|-----|
| REV | ISSUE DESCRIPTION | DFTR | CHKR | COG | DFTG MGR | ECO | PWR |
| A | REVISED PER ADD. #1 | JMN | BAD | TD | BB | 11834 | N/A |
| | | DATE | DATE | DATE | DATE | | |
| | | 9/13/07 | 9/14/07 | 9/14/07 | 9/14/07 | | |

THIS DRAWING CREATED BY ENGINEERING CHANGE ORDER (ECO): 11834 PWR: N/A
 DFTR: J.M. NEVAREZ 7/18/07
 CHKR: B. DAY FOR RAJ 8/9/07
 COG: ANTHONY DONNER 8/9/07
 CM: TODD SELLMER 8/13/07
 QA: BRUCE G. FAULK 8/13/07

U.S. DEPARTMENT OF ENERGY
Washington
 TRU Solutions LLC
 Waste Isolation Pilot Plant
 Corlsbod, NM

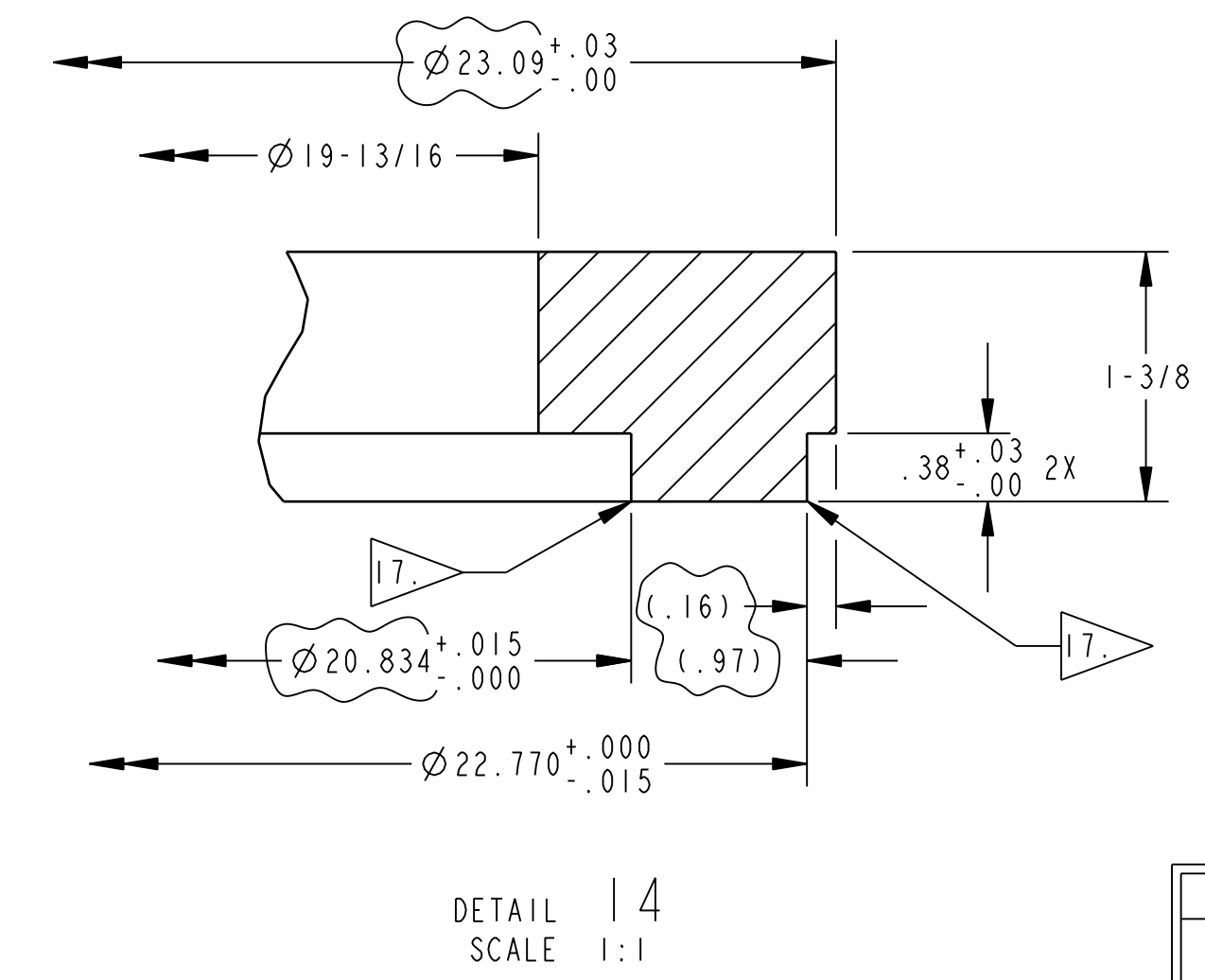
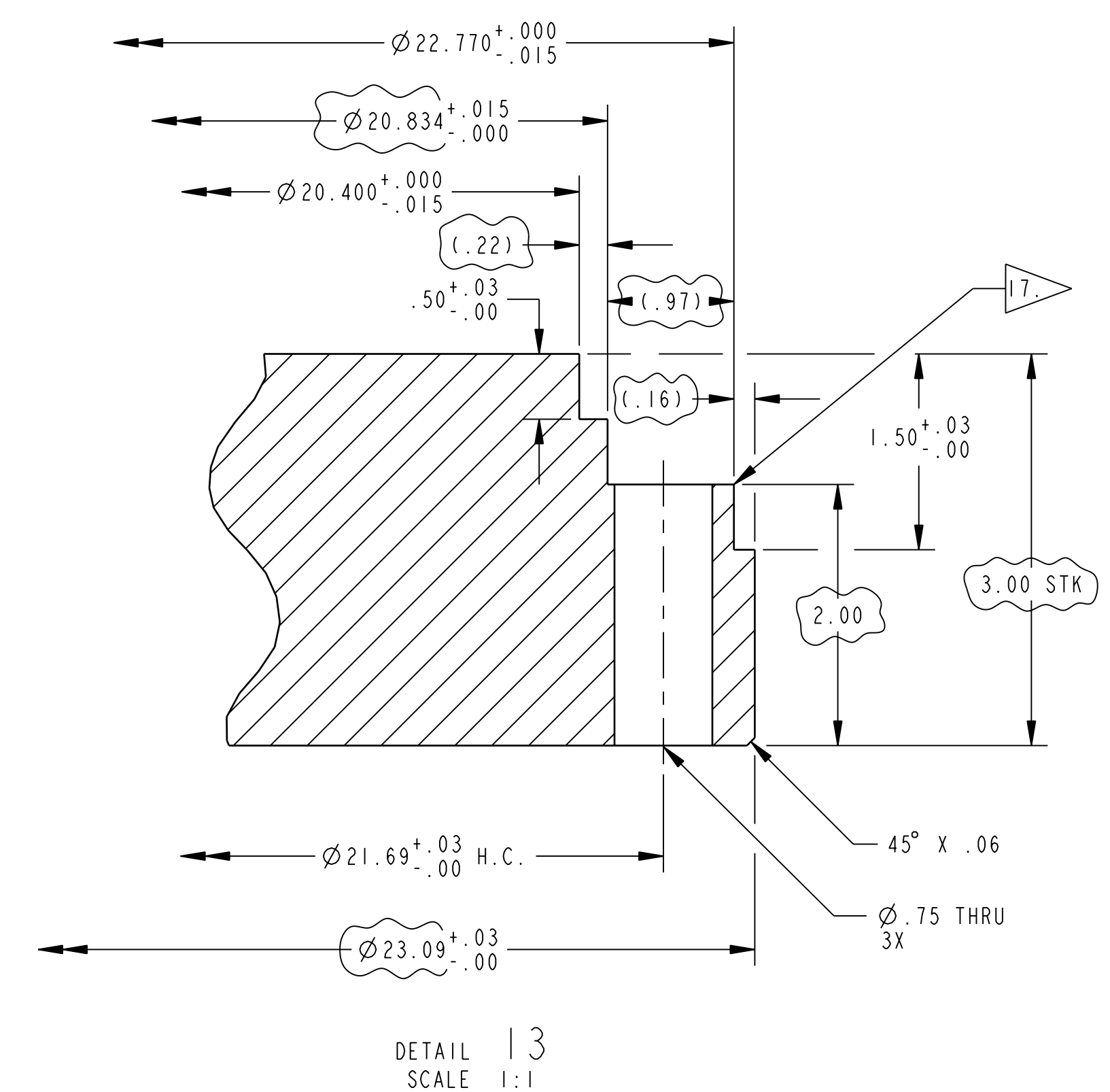
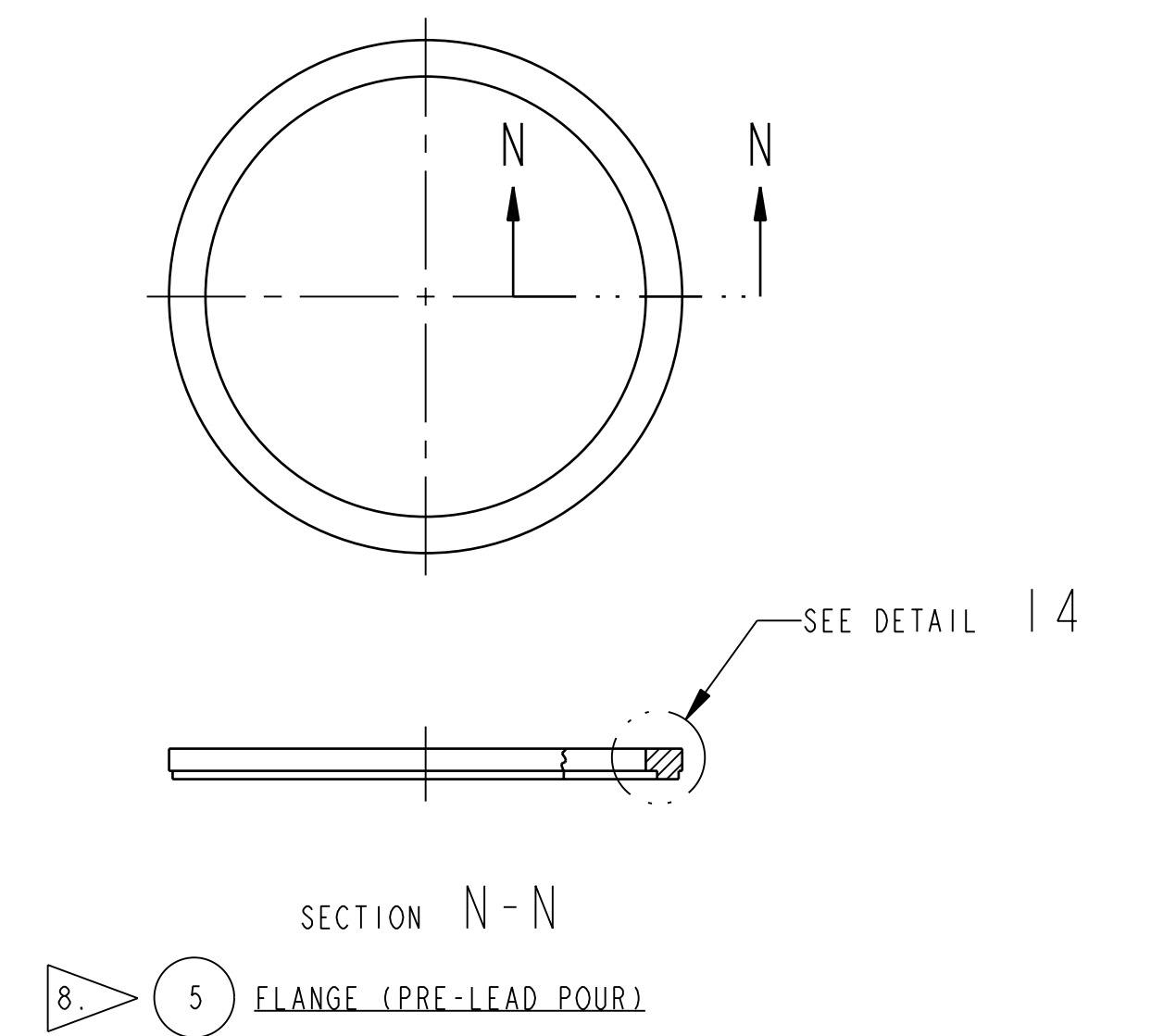
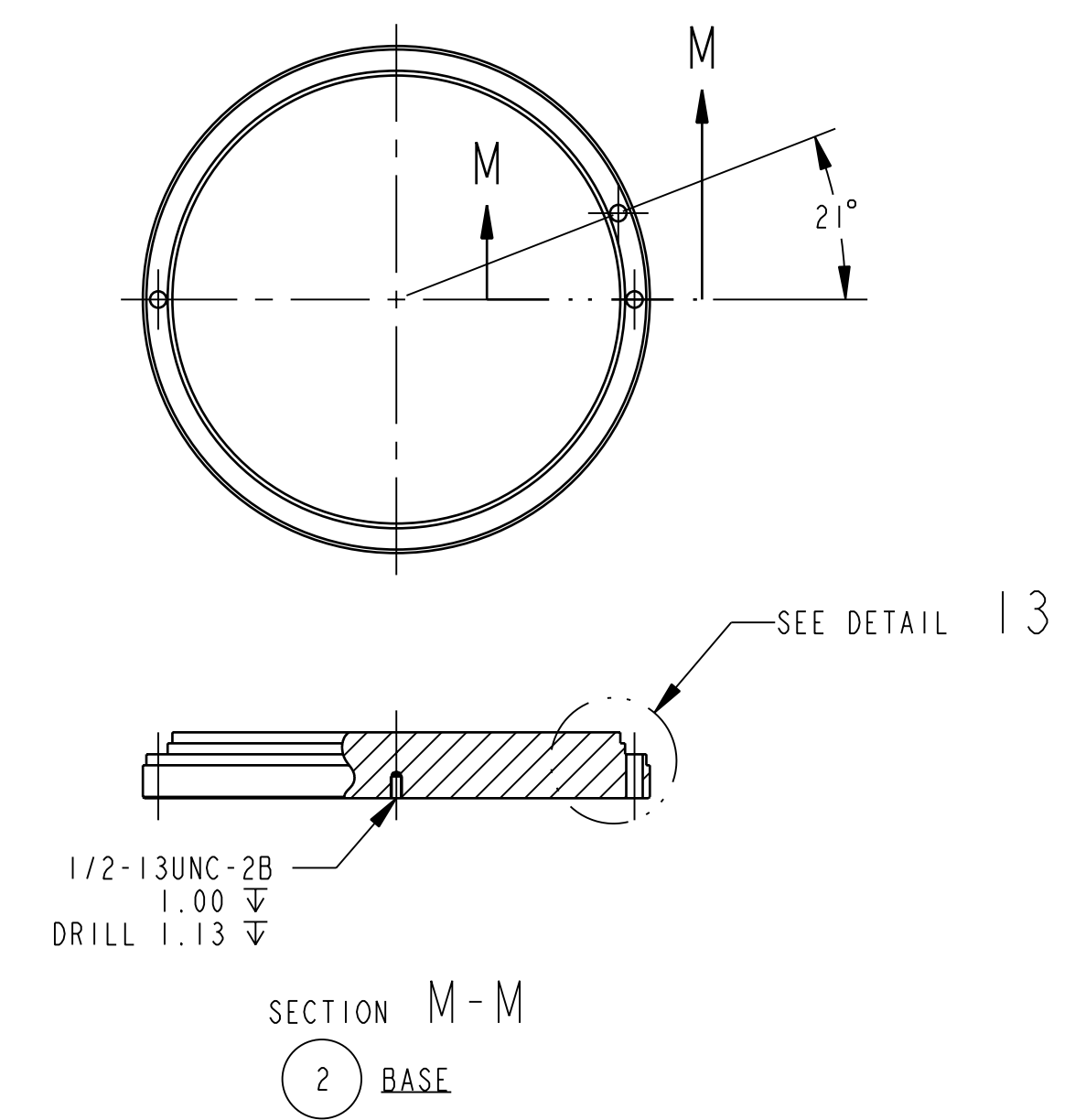
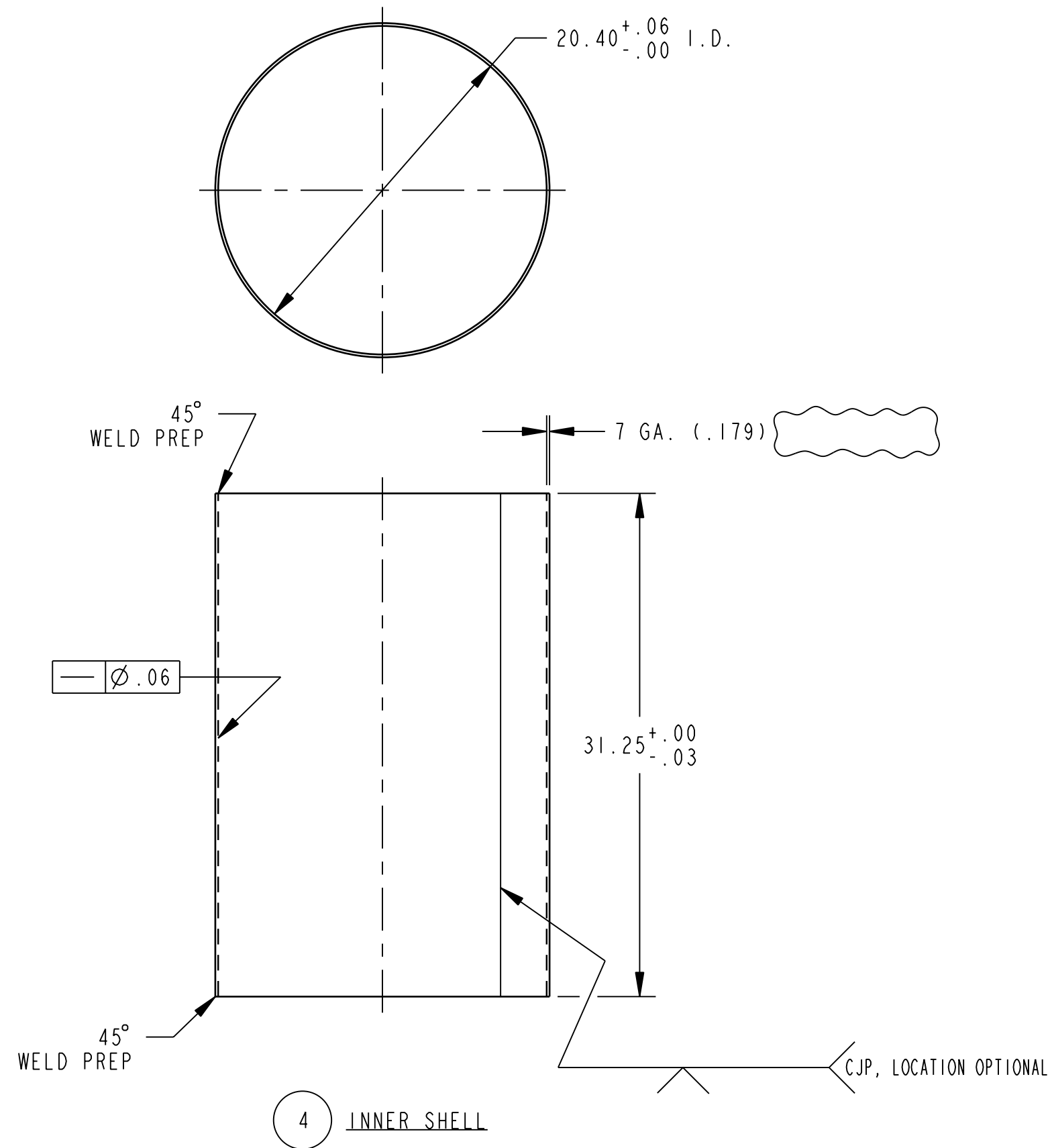
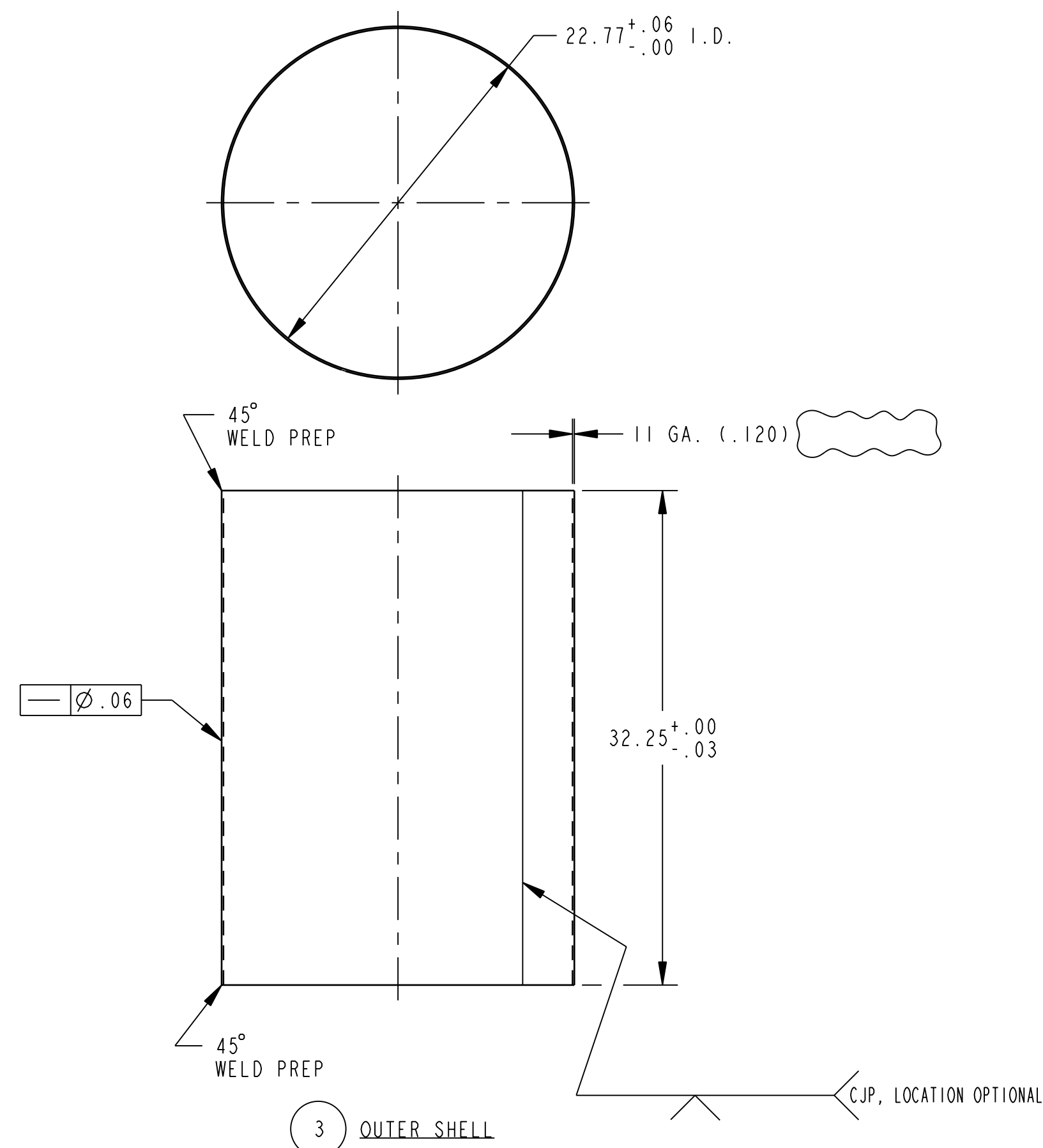
| | |
|---------------------------------------|------------------------|
| DIM. IN INCHES U.N.O. | SFTY: N/A |
| [] DENOTES mm U.N.O. | APPD: N/A |
| UNLESS OTHERWISE SPECIFIED TOLERANCES | APPD: N/A |
| 2 PL DEC 3 PL DEC ANGLES 125 | DM: BOB BEEMAN 8/13/07 |
| ±.03 ±.010 ±.5° | DOE: N/A |
| FRACTIONS: ±1/16 | CAD SOURCE |
| | PRO/ENGINEER |

| | | | |
|--|------------|------------------------------|-----|
| TITLE | SIZE SYS | DWG NO | REV |
| SHIELDED CONTAINER ASSEMBLY BODY (PRE-LEAD POUR) | D | PT03 | A |
| | SCALE: 1:4 | 165-F-026-W4 | |
| | | INTERPRET DWG PER ANSI Y14 | |
| | | THIS DRAWING TAKEN FROM: N/A | |
| | | VENDOR: N/A | |

| INDEX CODE NUMBER | | | | |
|-------------------|-----|----------|----|--------|
| SYSTEM | WBE | DWG TYPE | CL | VENDOR |
| PT03 | 165 | 01300 | 44 | 240 |

8 7 6 5 4 3 2

D
C
B
A



RELEASE AUTHORIZATION
PROTOTYPE FABRICATION ONLY

| INDEX CODE NUMBER | | | | |
|-------------------|-----|----------|----|--------|
| SYSTEM | WBE | DWG TYPE | CL | VENDOR |
| PT03 | 165 | 01300 | 44 | 240 |

| | |
|---------------------------------------|------------------------|
| DIM. IN INCHES U.N.O. | SFTY: N/A |
| [] DENOTES mm U.N.O. | APPD: N/A |
| UNLESS OTHERWISE SPECIFIED TOLERANCES | DM: BOB BEEMAN 8/13/07 |
| 2 PL DEC 3 PL DEC ANGLES 125 | DOE: N/A |
| ±.03 ±.010 ±.5° | CAD SOURCE |
| FRACTIONS: ±1/16 | PRO/ENGINEER |

| | | | | | | | |
|--|---------------------|--------------|---------|---------|----------|-------|-----|
| REV | ISSUE DESCRIPTION | DFTR | CHKR | COG | DFTG MGR | ECO | PWR |
| A | REVISED PER ADD. #1 | JMN | BAD | TD | BB | 11834 | N/A |
| | | 9/13/07 | 9/14/07 | 9/14/07 | 9/14/07 | | |
| THIS DRAWING CREATED BY ENGINEERING CHANGE ORDER (ECO): 11834 PWR: N/A | | | | | | | |
| DFTR: J.M.NEVAZ 7/18/07 | | | | | | | |
| CHKR: B.DAY FOR RAJ 8/9/07 | | | | | | | |
| COG: ANTHONY DONNER 8/9/07 | | | | | | | |
| CM: TODD SELLMER 8/13/07 | | | | | | | |
| QA: BRUCE G. FAULK 8/13/07 | | | | | | | |
| U.S. DEPARTMENT OF ENERGY | | | | | | | |
| Washington TRU Solutions LLC | | | | | | | |
| Waste Isolation Pilot Plant | | | | | | | |
| SHIELDED CONTAINER ASSEMBLY BODY PARTS (PRE-LEAD POUR) | | | | | | | |
| SIZE | SYS | DWG NO | REV | | | | |
| D | PT03 | 165-F-026-W5 | A | | | | |
| SCALE: 1:8 INTERPRET DWG PER ANSI Y14 | | | | | | | |
| THIS DRAWING TAKEN FROM: N/A | | | | | | | |
| VENDOR: N/A | | | | | | | |

8 7 6 5 4 3 2