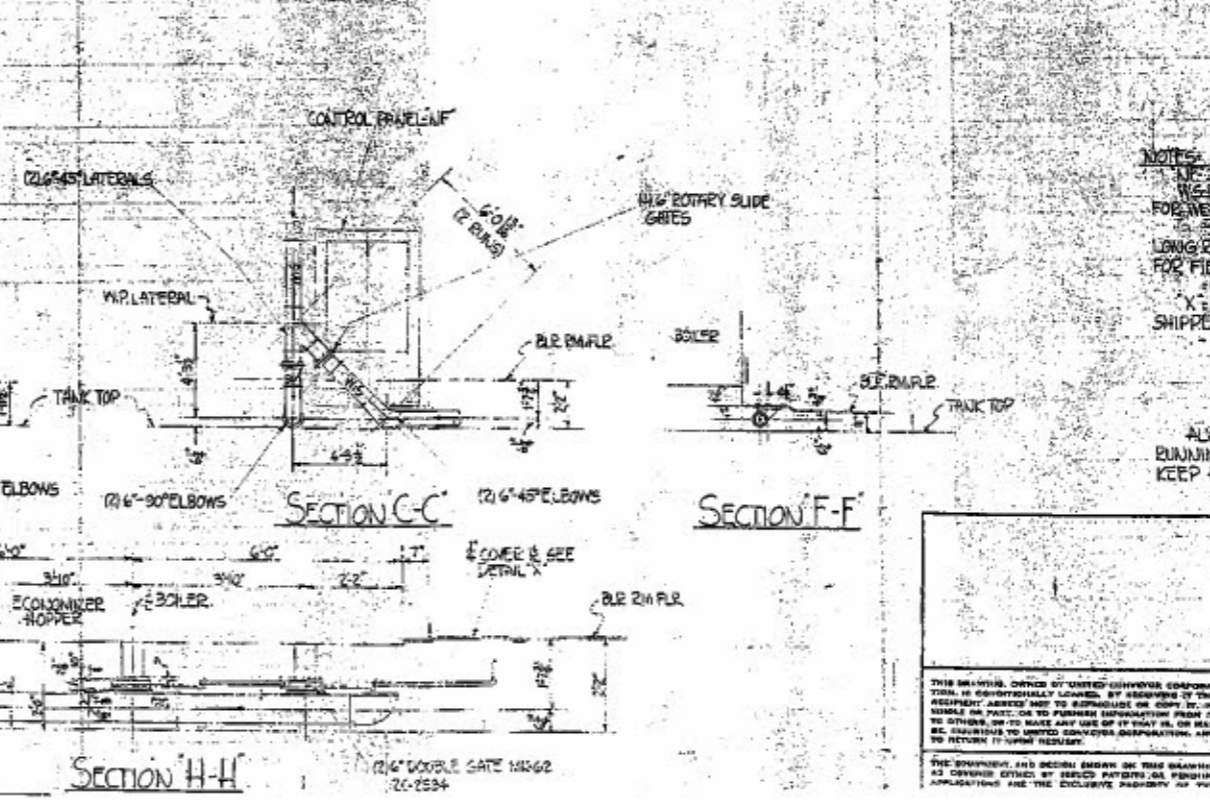
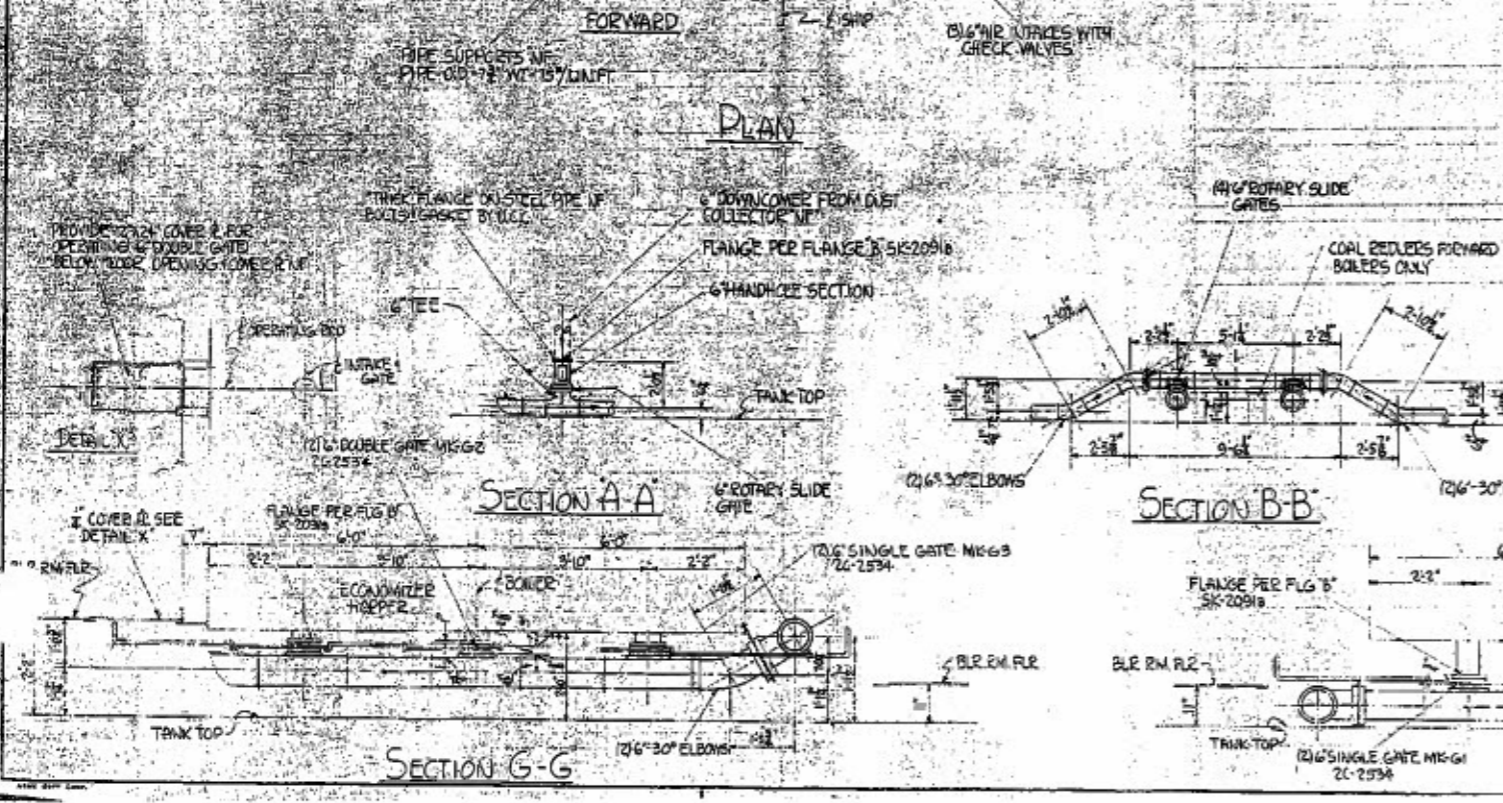
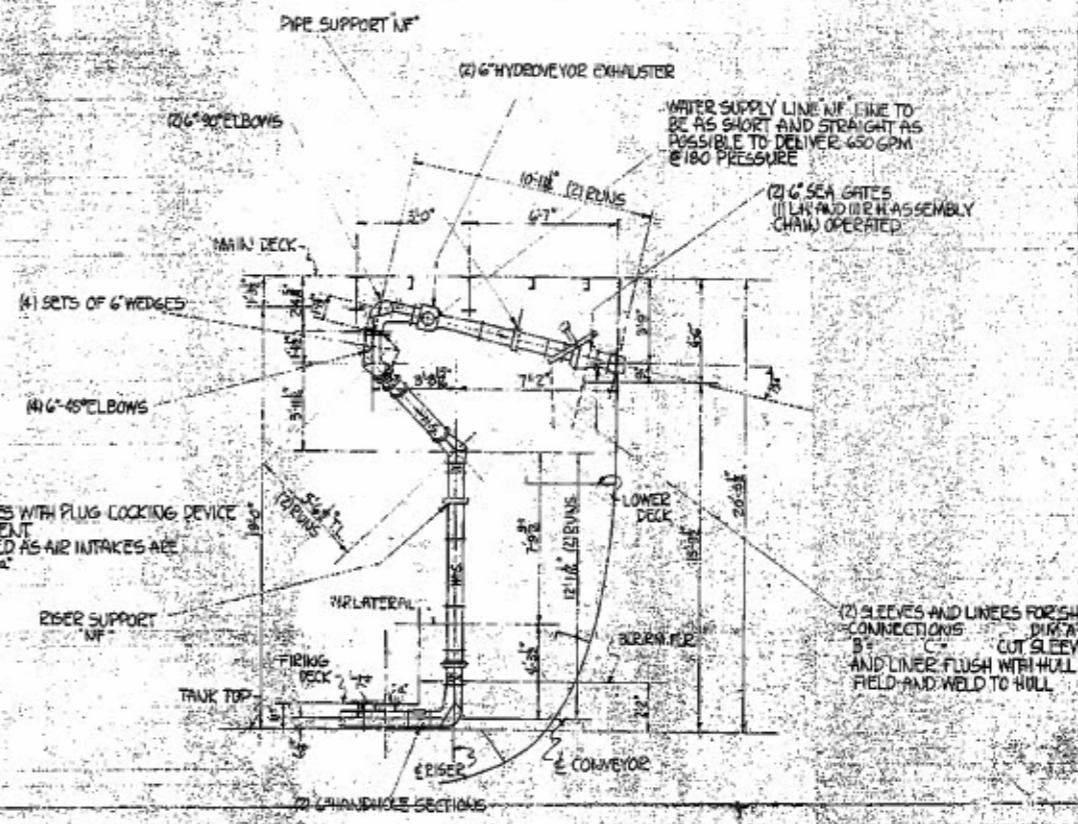
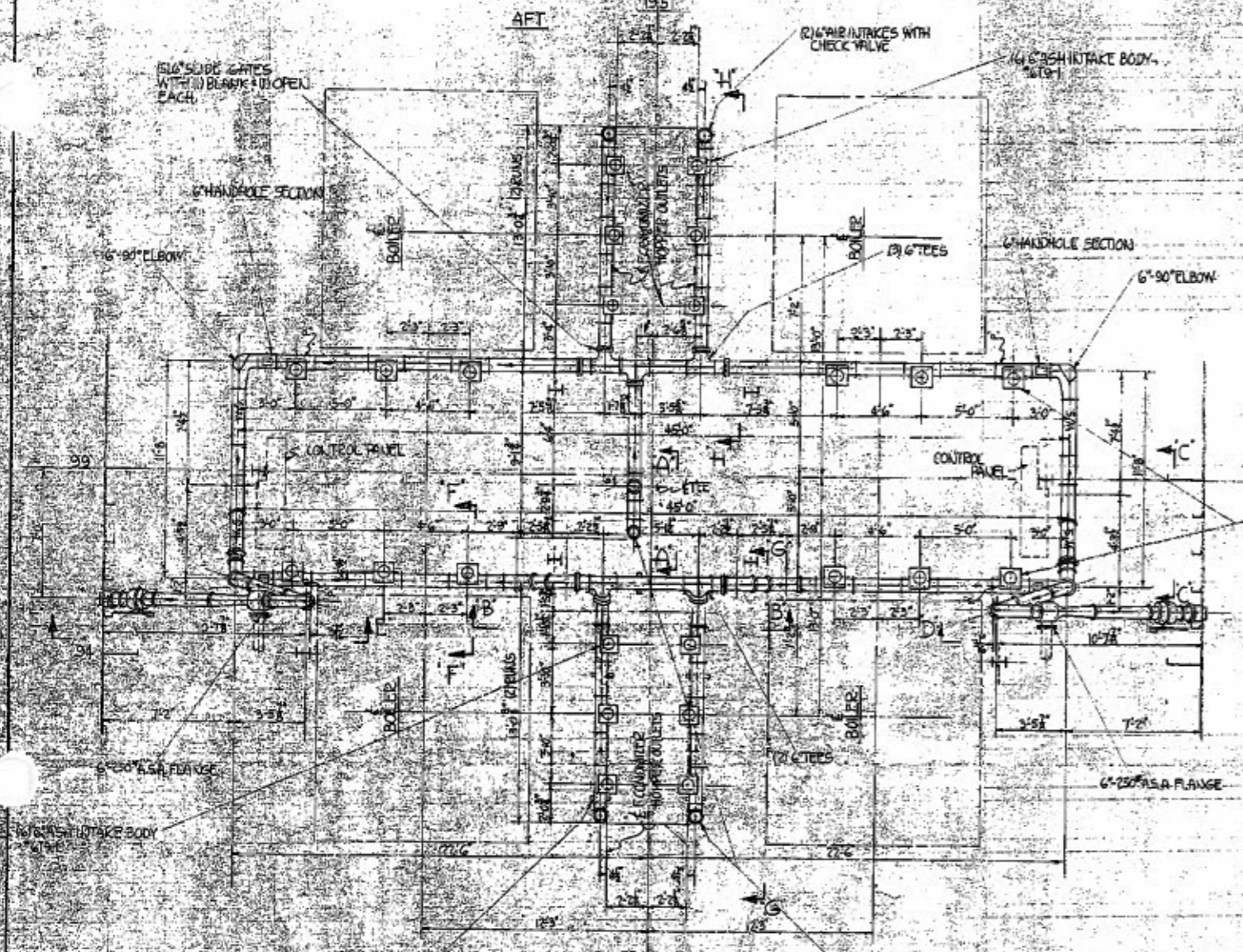


US EPA ARCHIVE DOCUMENT

1

(4) FOSTER-WHEELER TYPE D BOILERS
28,500 - 42,000 HP
HOFFMAN DUMP GATES



NOTES:
 - ALL DIMENSIONS ITEMS NOT FURNISHED BY U.C.
 - ALL DIMENSIONS PIPE OF LENGTH MOST SUITABLE TO ALLOW FOR WELD MUST BE PLACED AS SHOWN.
 - SHORT LENGTHS OF PIPE AND FITTERS AT END OF LONG RUNS ARE PLACED THERE TO MAKE ADJUSTMENTS FOR FIELD VARIATIONS.
 - OBTAIN INSTRUCTIONS BEFORE ERRECTING.
 - X DENOTES PIPE OF CORRECT LENGTH, TO BE SHIPPED AFTER FIELD CHECK.
 - USE NEURALASTIC GASKETS.

IMPORTANT OPERATING INSTRUCTIONS:
 ALWAYS KEEP AT LEAST ONE GATE OPEN WHEN STARTING RUNNING OR STOPPING THE SYSTEM, WHEN NOT IN USE KEEP ALL GATES CLOSED.

REVISIONS	6" HYDROVEYOR, MARINE ASH 1 FLY-ASH CONVEYOR
1	C. E. O. RAILWAY CAR FERRIS STEAMER MM106 & M108
2	
3	
4	
5	
6	
7	
8	
9	
10	
11	
12	
13	
14	
15	
16	
17	
18	
19	
20	
21	
22	
23	
24	
25	
26	
27	
28	
29	
30	
31	
32	
33	
34	
35	
36	
37	
38	
39	
40	
41	
42	
43	
44	
45	
46	
47	
48	
49	
50	
51	
52	
53	
54	
55	
56	
57	
58	
59	
60	
61	
62	
63	
64	
65	
66	
67	
68	
69	
70	
71	
72	
73	
74	
75	
76	
77	
78	
79	
80	
81	
82	
83	
84	
85	
86	
87	
88	
89	
90	
91	
92	
93	
94	
95	
96	
97	
98	
99	
100	

United Conveyor Corp.
 CHICAGO, ILL.
 SCALE: 1/4" = 1'-0"
 DATE: 1-15-51
 DRAWING NUMBER: 4R-3358-A