

US EPA ARCHIVE DOCUMENT

Educating to Increase Successes in Bed Bug Control



© Copyright Bed Bug Central

2011 EPA Bed Bug Summit

Richard Cooper
BedBug Central &
Rutgers University

©Copyright BedBug Central 2011

We have made significant progress in last four years!

- 1. Research community is beginning to provide information that is shaping management decisions and product development.**
- 2. Effective tools and methods have been developed**
- 3. Pest management industry has gained much needed field experience**

Not necessary to discard or treat beds with pesticides!



Encasement of Mattresses & Box Springs



Interceptor Devices on Legs of Beds, Sofas and Chairs



- 1. Intercepts bugs leaving cluttered areas for a blood meal**
- 2. Prevents bugs from dispersing & laying eggs in unpredictable locations away from beds**

Vacuums can be used to quickly eliminate large numbers of bugs



Steam overcomes limitations of a vacuum

**Destroys all
stages
including
eggs**



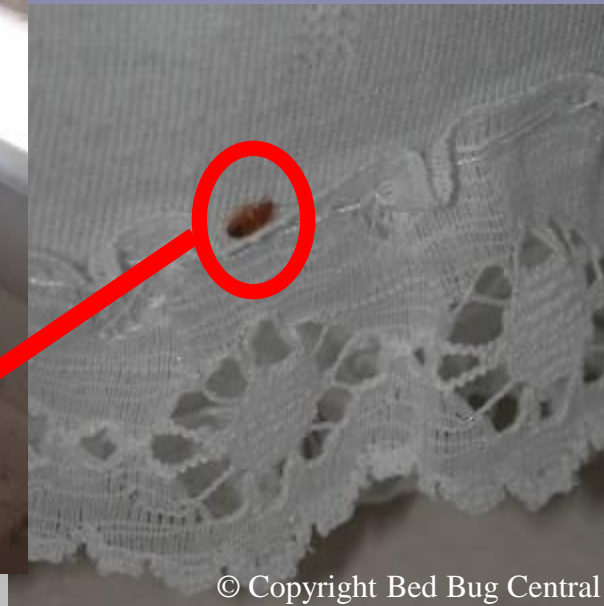
Hot Laundering an effective method for destroying bed bugs and their eggs!



© Copyright Bed Bug Central



© Copyright Bed Bug Central



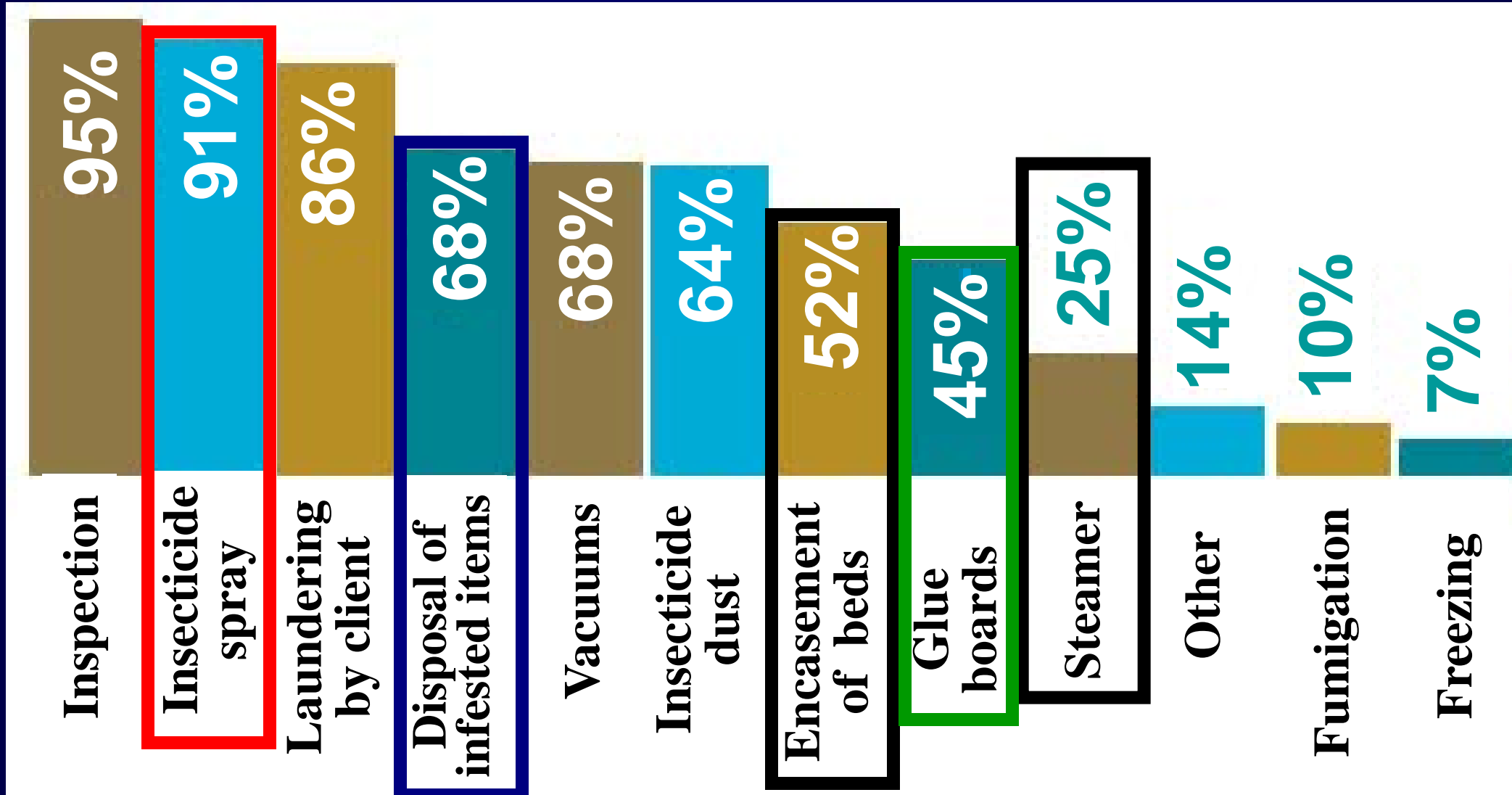
© Copyright Bed Bug Central

Relying on pesticides as the sole method of control is a big mistake



Select materials and methods that help address pesticide tolerance, resistance & offer residual effectiveness

Which of the following methods do you routinely use to control bed bugs?



Source: PMP Magazine Jan 2008 Business of Bed Bugs



bedbugFree Program

- Over 125 applicants from nearly every state in the US
- 50 approved companies in 33 different states

The logo for the bedbugFREE! program features the word 'bedbug' in a black, sans-serif font, followed by 'FREE' in a large, bold, red, sans-serif font. To the right of the text is a black exclamation mark with a small bed bug icon at its base. The entire logo is enclosed in a red rectangular border.

**Find a bedbugFREE
approved pest control
company in your
neighborhood!**

Select your State

Alabama ▼

Go ->

BedBug Central

Most Companies

- ✓ Rely on visual inspection alone for detection of bugs
- ✓ Limit treatments to rooms where bed bugs are seen
- ✓ Require excessive preps (one size fits all)
- ✓ Rely on pesticides as sole method or primary method
- ✓ Don't have a strategy for dealing with eggs
- ✓ Require discarding of infested beds/sofas etc.
- ✓ Have limited or pre-determined follow up program
- ✓ Lack a method for determining when infestations eliminated
- ✓ Little effort to get into surrounding units (no follow up)

Bed Bug Central

“Boot Camp” & “OJO”

Hands On Training

- 120 individuals
- 83 different organizations
 - PMPs
 - Univ. Housing Officials
 - Property Managers
 - Directors, Group Homes
- 37 States
- 3 Canadian Provinces
- Japan



BedBug University

BedBug University: Boot Camp

Boot Camp is a four-day course designed to shorten the learning curve of companies that want to increase their bed bug revenues and enhance their bed bug business model. The success of our field program lies in the 3-to-1 student-teacher ratio where students receive the focused attention of our instructors.



BedBug University: On the Job Observation

On the Job Observation allows pest management companies to send their staff to New Jersey to attend an in-house presentation on the BedBug Central protocol and spend time in the field with a BedBug Central's team to observe the protocol in action.

It's not about
“The What”
it's more about
“The How”

Classroom Coupled With “Hands On” Field Training



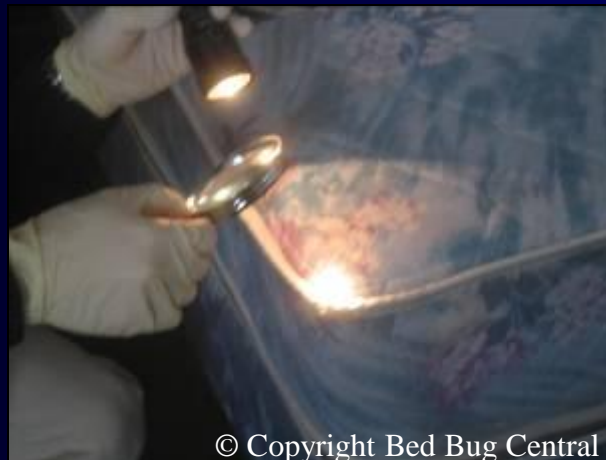
© Copyright Bed Bug Central



© Copyright Bed Bug Central



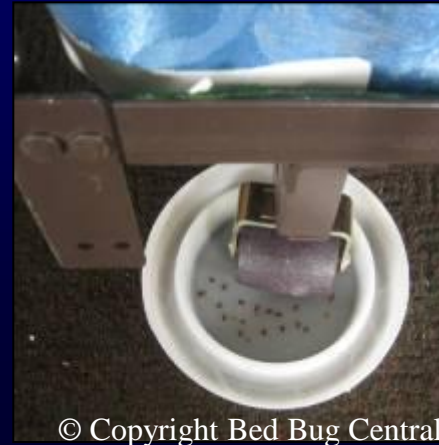
© Copyright Bed Bug Central



© Copyright Bed Bug Central



© Copyright Bed Bug Central



© Copyright Bed Bug Central



© Copyright Bed Bug Central



NPMA

Blue Ribbon Panel

“Best Management Practices”



**Need to do a
better job at
Stopping the
Spread!**

Property managers unwilling or unable to afford proactive community-wide programs



© Copyright Bed Bug Central



© Copyright Bed Bug Central



© Copyright Bed Bug Central



© Copyright Bed Bug Central

Community Education

Early Detection Efforts

At Risk Communities: Implement Community-Wide “Early Detection Programs”

- 1. Interception devices on beds**
- 2. Encasement of beds**
- 3. Periodic inspections by facilities staff or pest management vendor**



Building Wide Inspection

360-unit apartment building (section 8 for elderly)

- 19 infestations reported by residents
- 43 additional infestations identified through building wide inspection & installation of climbups (7-d)
 - **19%** (8/43) identified through visual inspection
 - **81%** (35/43) identified with climbups

**85% (43/62) of the infestations
were not reported by residents!**

**We Need to Become
More Realistic in
our Education Efforts
and Solutions to
Problems!**

Avoid second hand or discarded items



If you are going to bringing used items into your home check them very carefully!

Heat chambers to heat used furniture brought in by residents



© Copyright Bed Bug Central



© Copyright Bed Bug Central

“1 of 15 New Yorkers dealing with bed bugs” - NYC Dept. of Health

WSJ
Hollister
King's Co. Hospital
NYC 311 Call Center
Google's Offices
Mid Manhattan Library
DA's Office
Juicy Couture
NikeTown
Time Warner Center
AMC Movie Theaters
Victoria's Secret
Empire State Building
Abercrombie & Fitch
Goldman Sachs

Suspected bedbug causes closure of CCAC campus in McCandless

Thursday, October 28, 2010
Pittsburgh Post-Gazette

A student who showed up for class with what is believed to be a bedbug on his clothing prompted the closure of Community College of Allegheny County's North Campus in McCandless, sending 3,500 students as well as employees home for the rest of the week.

The decision to cancel classes until Monday was made "as a precaution." The unidentified student, whose apartment is being treated for the pest, entered the building Wednesday morning and the bug was spotted, CCAC spokesman David Hoovler said.

"He left campus and agreed not to return until his apartment is taken care of," Mr. Hoovler said.

Exterminators inspected the building Wednesday afternoon before the decision was made to cancel classes for the rest of the week.

Hazleton school treated for bed bugs

Published: November 13, 2009

By Kent Jackson

Staff Writer

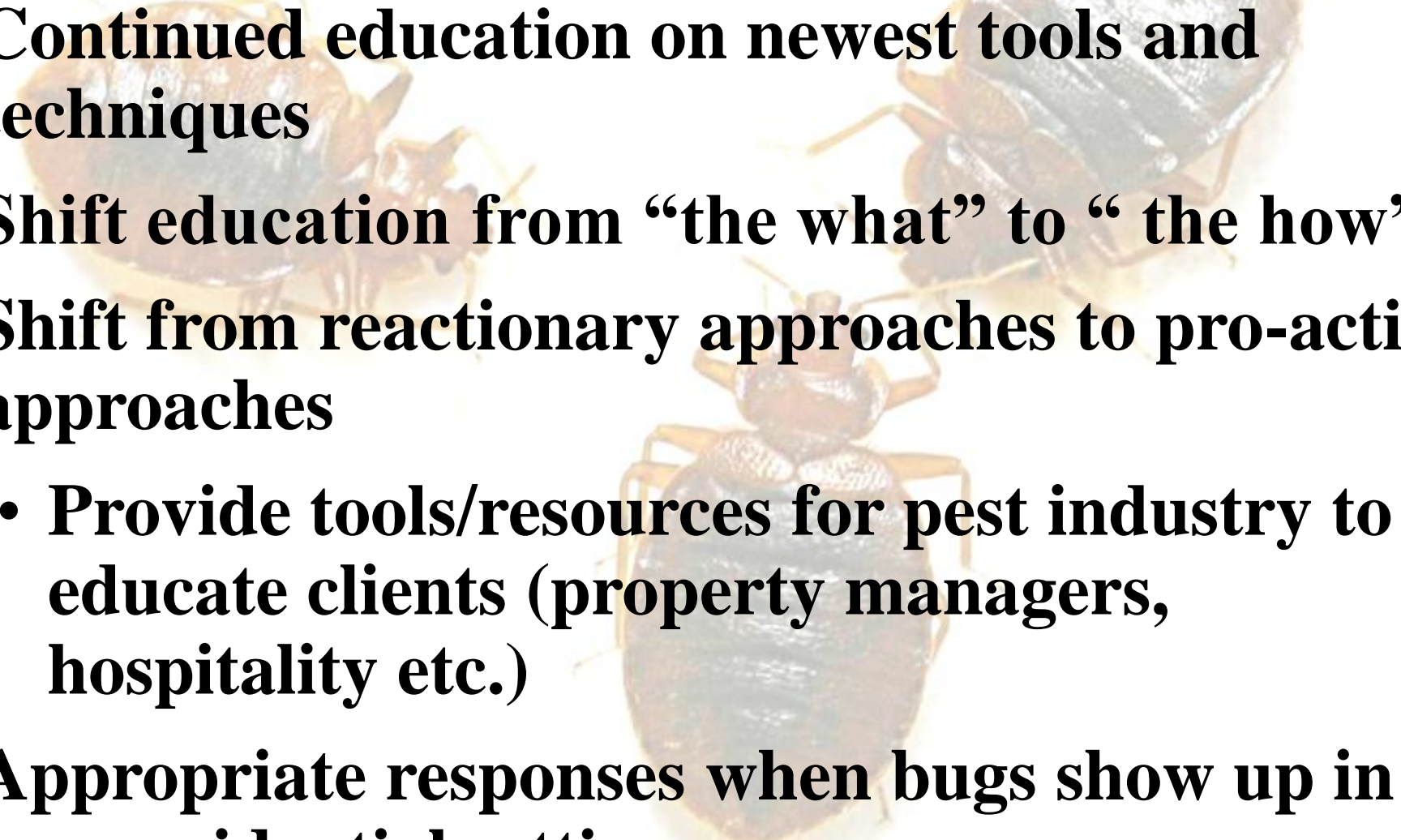
Detective work began Tuesday when a girl at the Valley/Elementary Middle School showed an insect bite to the school nurse.

After the nurse recognized a bed bug bite, she referred the girl to a doctor, who concurred.

To investigate bed bugs, school administrators discovered that a sleepover helped spread the infestation to two homes and six students.

They found no bed bugs in any of the five schools that those students attend.

Where Do Go From Here?

- 
- The background of the slide features a faded, artistic image of three beetles. One beetle is in the upper left, another in the upper right, and a larger one is centered in the lower half. They are rendered in a light, brownish-gold tone, blending into the white background.
- 1. Continued education on newest tools and techniques**
 - 2. Shift education from “the what” to “ the how”**
 - 3. Shift from reactionary approaches to pro-active approaches**
 - Provide tools/resources for pest industry to educate clients (property managers, hospitality etc.)**
 - 4. Appropriate responses when bugs show up in non-residential settings**

Thank You



QUESTIONS?