





US EPA ARCHIVE DOCUMENT

88°30'W 88°27'W 88°24'W 88°21'W

**Mississippi Canyon 252, Gulf of Mexico**  
R/V Brooks McCall  
Sampling Effort  
Date Produced: May 20, 2010  
Created By: NOAA/NCCOS/CCMA

**Legend**

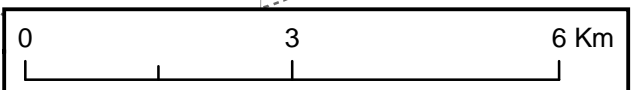
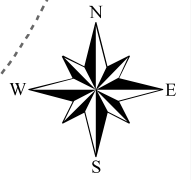
-  5/20/10 Stations
-  5/19/10 Stations
-  Cruise 2 (5/15-5/17) Stations
-  Cruise 1 (5/8-5/11) Stations

Note: Stations B20, B21, B26, and B36 were all sampled at the same location on 5/15, 5/16, 5/17, and 5/20, respectively.

**Wellhead**

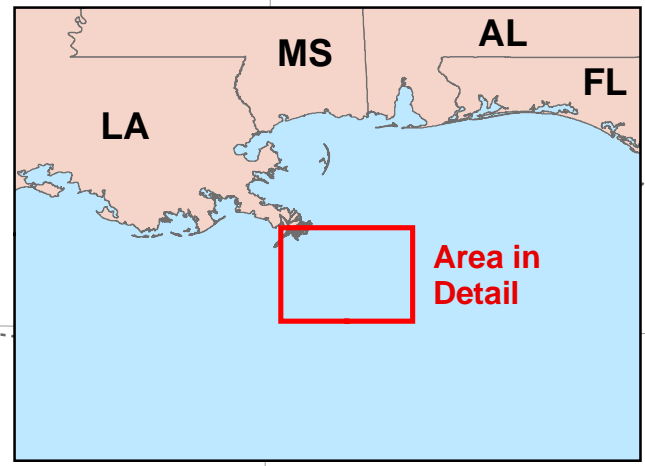
1 km

B34  
B35  
B36  
B37



15 km

10 km



28°45'N

28°45'N

28°42'N

28°42'N

28°39'N

28°39'N

88°30'W

88°27'W

88°24'W

88°21'W