

US EPA ARCHIVE DOCUMENT

# 2008 Missouri Flood Response



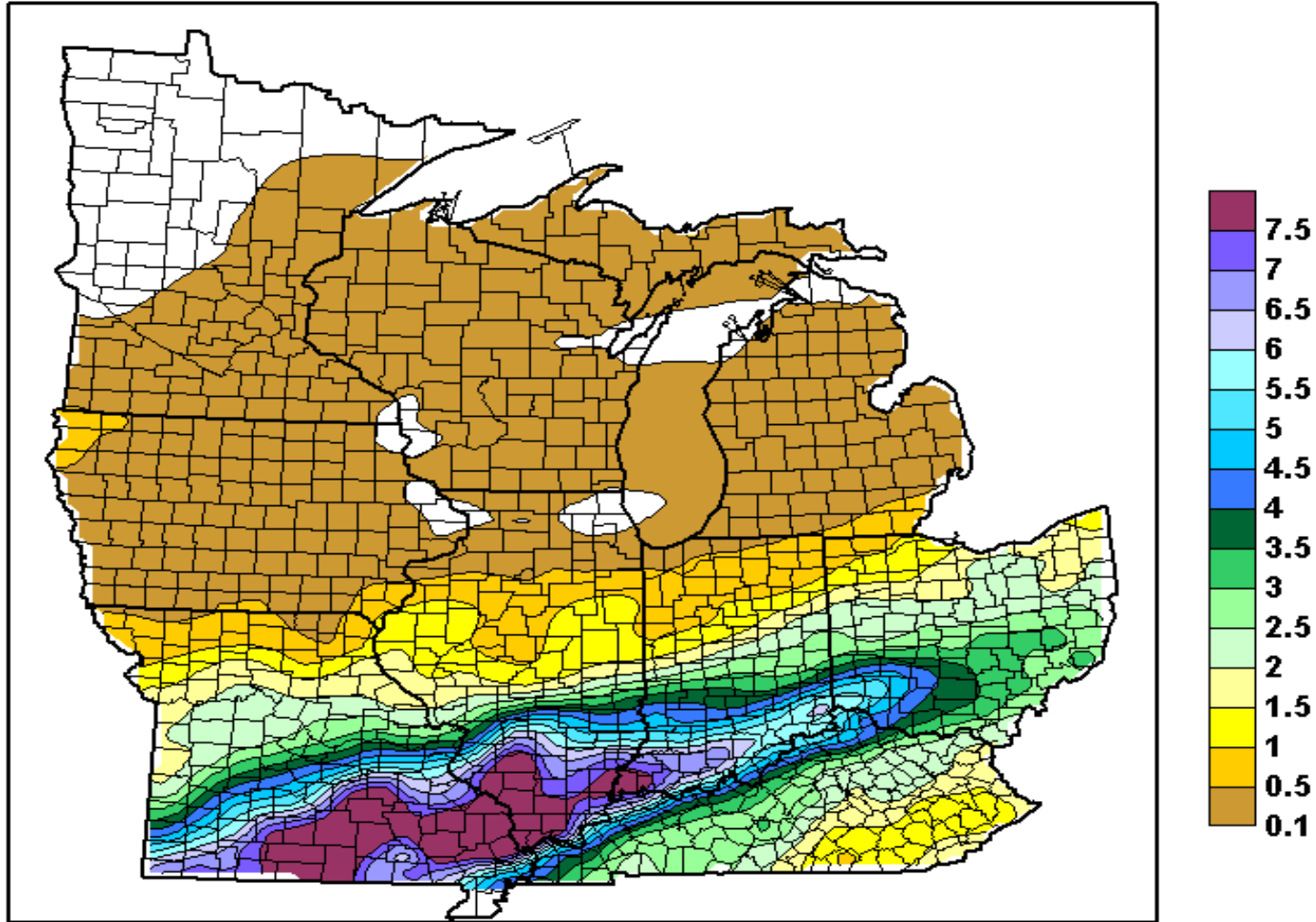
**EPA FRESHWATER SPILLS SYMPOSIUM**

**May 22, 2008**

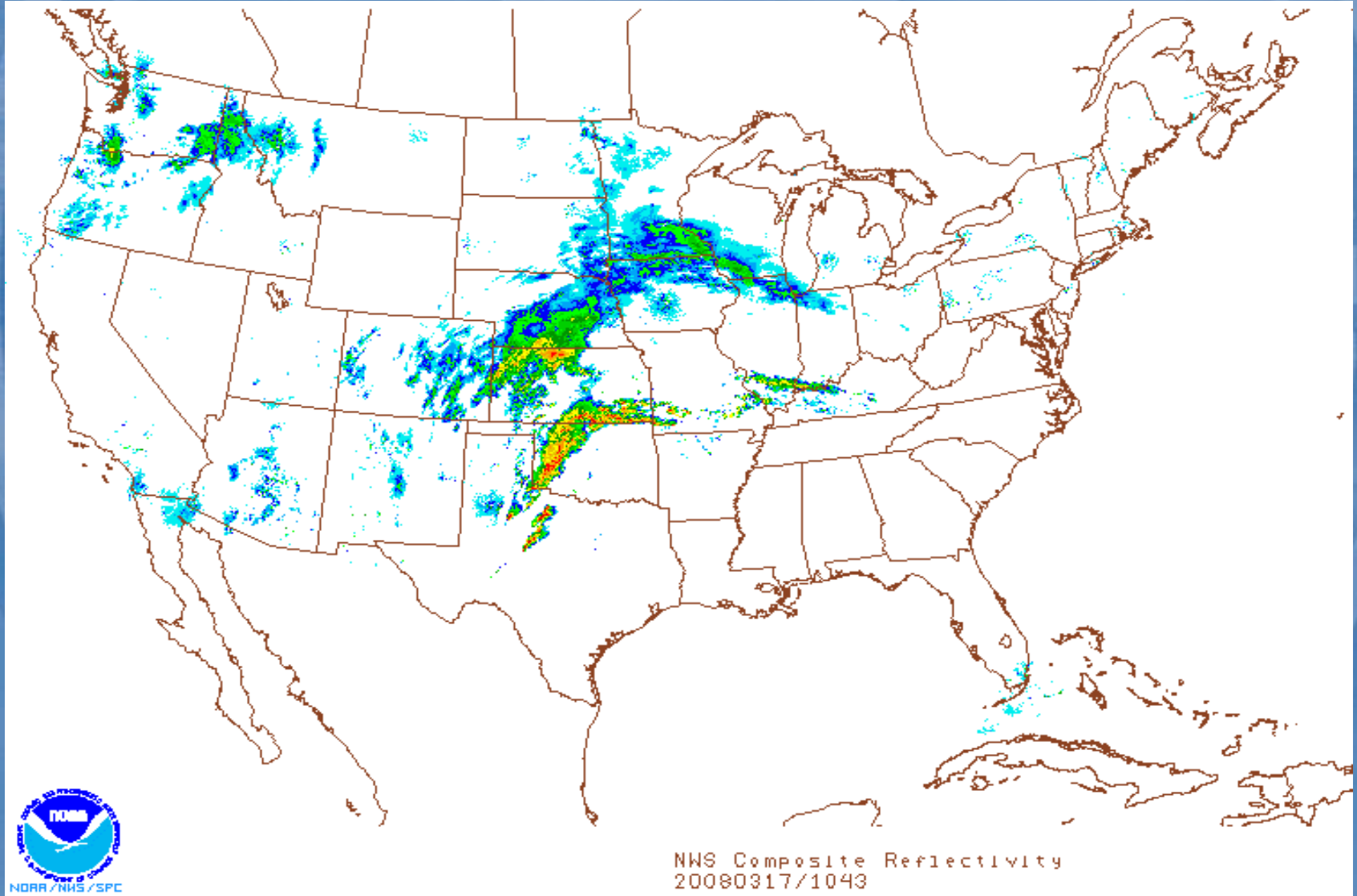
**ST. LOUIS, MISSOURI**

# March 17 - 19, 2008

7-Day NWS County MPE Precipitation (inches) valid at 06:00 CST on 03/21/2008



# March 17 - 19, 2008

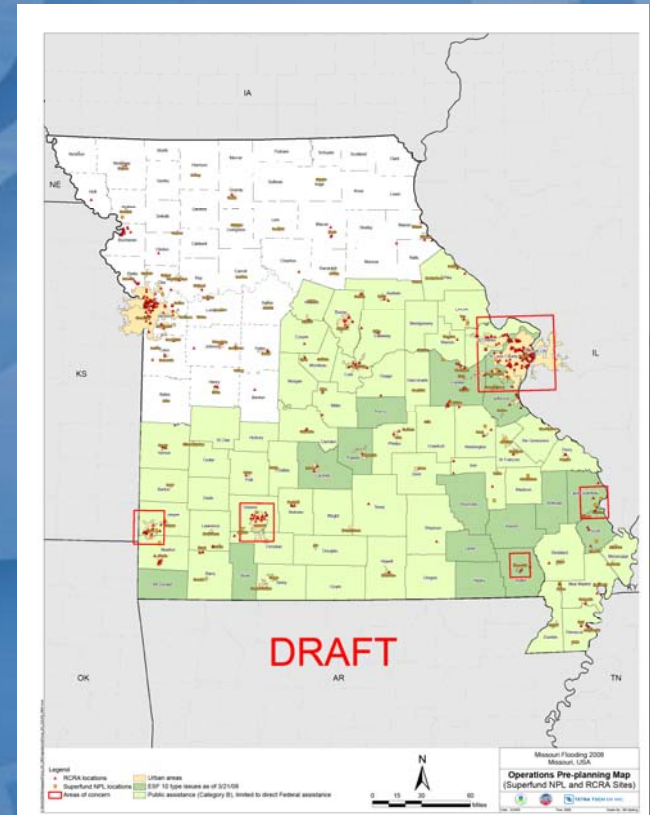


# March 19, 2008

- **Presidential Disaster Declaration**

- Robert T. Stafford Disaster Relief and Emergency Assistance Act
- **70 Counties & the City of St. Louis**

Audrain, Barry, Barton, Boone, Bollinger, Butler, Callaway, Camden, Cape Girardeau, Carter, Cedar, Christian, Cole, Cooper, Crawford, Dade, Dallas, Dent, Douglas, Dunklin, Franklin, Gasconade, Greene, Hickory, Howard, Howell, Iron, Jasper, Jefferson, Laclede, Lawrence, Lincoln, Madison, Maries, McDonald, Miller, Mississippi, Montgomery, Moniteau, Morgan, New Madrid, Newton, Oregon, Osage, Ozark, Pemiscot, Perry, Phelps, Pike, Polk, Pulaski, Reynolds, Ripley, St. Charles, St. Clair, St. Francois, St. Louis, Ste. Genevieve, Shannon, Scott, Stoddard, Stone, Taney, Texas, Vernon, Warren, Washington, Wayne, Webster, and Wright Counties and the Independent City of St. Louis



# March 21

- MDNR notifies EPA of plan to formally request ESF 10 assistance
- FOSC **Paul Doherty** deployed to Jefferson City
- FOSC **Dave Williams** coordinating Mission Assignment language

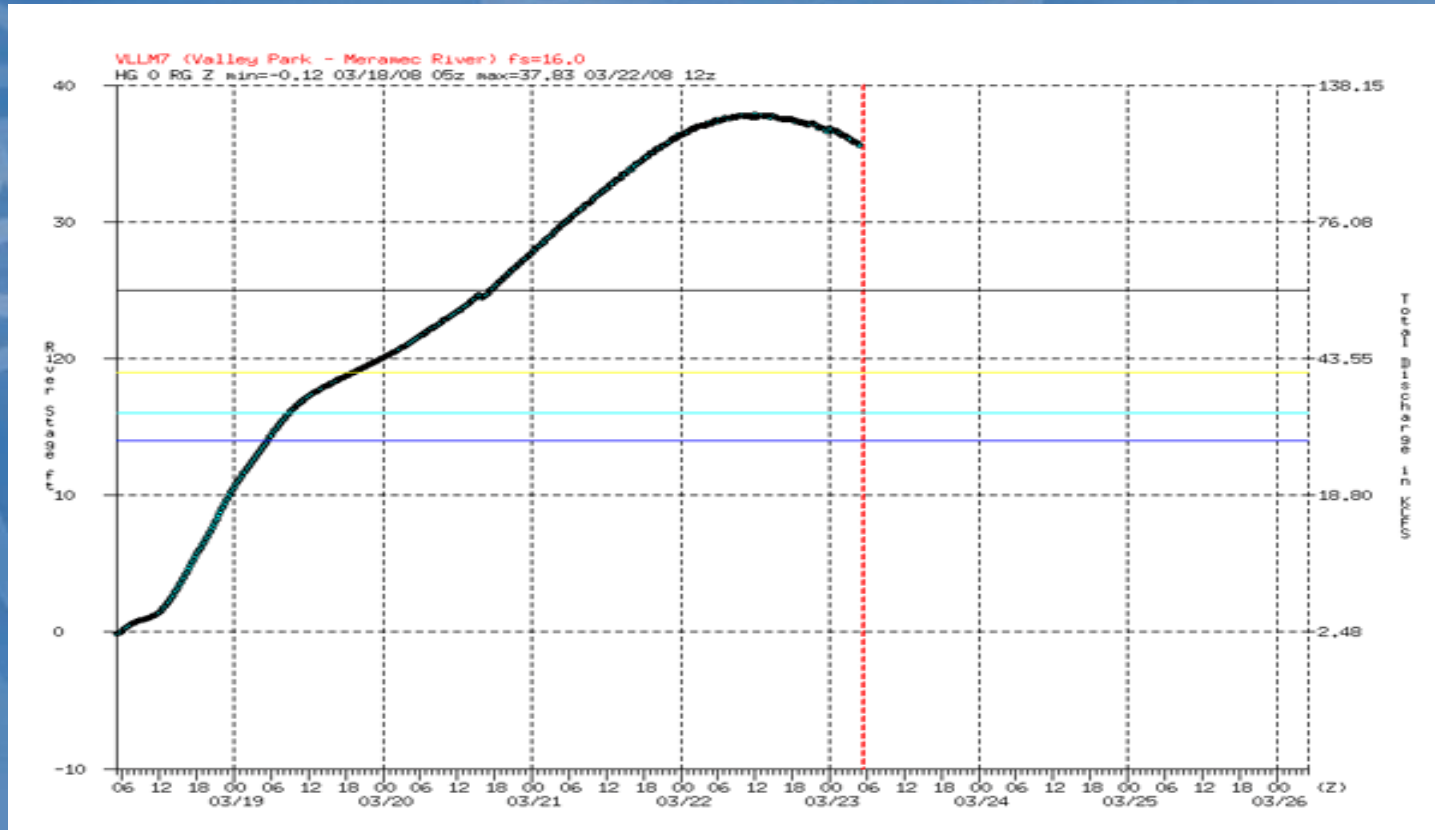


# March 21

- **4 Areas of Concern identified (Branches)**
  - St. Louis/Eureka
  - Poplar Bluff
  - Cape Girardeau
  - Springfield/Joplin

# March 22, 2008

The Meramec River at Valley Park, Missouri crested at 37.83 feet at 7 a.m. on March 22nd. This is the third highest flood crest ever recorded at this forecast point.





**ORGANIZATIONAL STRUCTURE OF  
REOC/INCIDENT COMMAND  
DURING MISSOURI FLOOD  
3/21/2008**

**RA**  
John Askew  
Bill Rice

**RIC**  
Cecilia Tapia  
Robert W. Jackson

**RICT**  
Scott Hayes/ Ken Buchholz

**CNSL**  
Micinski

**Incident Command**  
Don Lininger

**Missouri EOC**  
Paul Doherty

**REOC/ FEMA**  
Dave Williams

**Health and Safety Officer**  
Rickey Roberts

**Liason Officer**  
TBD

**Public Information Officer**  
Dianna Whitaker

**Planning Section**

**Logistics Section**  
Morris Holmes  
Todd Teghmeyer

**Operations**

**Finance/Budget Section**  
Teri Hankins

**Environmental Unit Leader**  
Leslye Werner

**Resource Unit Leader**

**Situation Unit Leader**  
Deandre Singletary

**Springfield/Joplin Branch**

**Popular Bluff Branch**

**Cape Girardeau Branch**

**St. Louis/Eureka Branch**

Land Recovery

Water Recovery

Temporary Stageing Yard

Assessment & Recon

Land Recovery

Water Recovery

Temporary Stageing Yard

Assessment & Recon

Land Recovery

Water Recovery

Temporary Stageing Yard

Assessment & Recon

Land Recovery

Water Recovery

Temporary Stageing Yard

Assessment & Recon

Available OSCs  
**St. Louis**  
Weatherford  
Silver  
Smith  
  
**KC**  
Doherty  
Williams, R2  
Lininger  
Nold  
Fisher  
McGlasson  
Davis  
Schademann  
Ruiz  
Larson, R1  
Miley  
Schmaedick

# March 24

- EPA was issued 2 Mission Assignments
  - ESF 10 - \$500K
  - JFO Support - \$25K
- OSCs **Silver/Weatherford/Smith** initiate ESF 10 reconnaissance & assessment activities with MDNR OSCs
- Staging Areas identified
  - Eureka – MDOT property
  - Poplar Bluff – City property

# March 25

- OSCs **Nold & Lininger** deploy to Jefferson City with Mobile Command Post
- Organized Unified Command
- Established 2 Branches
  - East-Central
  - Southeast
- Orphan Container Recovery
- Developed Initial SitRep

**ORGANIZATIONAL STRUCTURE OF  
REOC/INCIDENT COMMAND  
DURING MISSOURI FLOOD  
3/31/2008**

**RA**  
John Askew  
Bill Rice

**RICT**  
Scott Hayes/ Ken Buchholz

**RIC**  
Cecilia Tapia  
Robert W. Jackson

**CNSL**  
Cheryl Micinski

**JFO/MDNR EOC**  
Susan Fisher EPA

**Incident Command**  
Don Linger EPA (St. Louis)  
Alan Reinkemeyer MDNR (Jeff. City)

**Health and Safety Officer**  
Rickey Roberts (KC)

**Liason Officer**  
TBD

**Public Information Officer**  
Dianna Whitaker (KC)

**Planning Section**  
Katy Miley EPA

**Logistics Section**  
Morris Holmes EPA (KC)  
Todd Teghmeyer EPA (KC)

**Operations**  
Don Linger EPA (St. Louis)  
Cory Jorgenson MDNR (Jeff. City)

**Finance/Budget Section**  
Teri Hankins (KC)

**Environmental Unit Leader**  
Leslye Werner (KC)

**Resource Unit Leader**  
Janis Thompson (KC)

**Situation Unit Leader**  
2 MDNR Duty Officers (Jeff. City)  
Bill - START  
Ryan - START

**Documentation Unit Leader**  
Joleen Werst (KC)

**Southeast Branch**  
Heath Smith EPA  
Art G. MDNR

**East-central Branch**  
Jim Silver EPA  
Skip R. MDNR

**Land Recovery**  
TBD

**Land Recovery**  
TBD if necessary

**Water Recovery**  
A: TBD  
B: Art G. MDNR  
C: EPA OSC or RSC

**Water Recovery**  
A: Jeff W./Adam V.  
B: John F. EPA  
C: Doug T. MDNR

**Temporary Staging Yard**  
Adam R. EPA  
7th CST

**Temporary Staging Yard**  
Eddie M. EPA  
Skip R. MDNR  
7th CST

**Assessment & Recon**  
Josh W. MDNR  
MDOC

**Assessment & Recon**  
Adam V./  
Doug Thompson  
MDNR

- Available OSCs
- St. Louis**
- Weatherford
- Silver
- Smith
- KC**
- Doherty
- Williams
- Linger
- Nold
- Fisher
- McClasenn
- Davis
- Shademann
- Ruiz
- Larson
- Miley
- Schmaedick
- Ferguson
- Kroone
- Frey
- Campbell
- ERT**
- Stroud
- MDNR**
- Harris
- Jorgensen
- Thompson
- Sappington
- Bryant
- Hannon
- Convient (?)
- Starke
- EPA RSC**
- Garrett
- Gunter
- Evans
- Sena

# Reconnaissance

- Air



- Water


- Missouri Department of Natural Resources
- Missouri Department of Conservation
- Missouri Highway Patrol
- Missouri National Guard
- 7<sup>th</sup> Civil Support Team

# Reconnaissance

- GPS
- MDNR Form



# MDNR Container Form

<b>Department of Natural Resources</b> <b>Hazardous Material Identification Form</b>							
<u><b>24 Hour Spill Line (573) 634-2436</b></u> Mid March Flood 2008							
Identification for Hazardous Material such as Propane Tanks, Cylinders, Fuel Tanks, Orphaned Containers, Drums, etc...							
Reporting Party:				Contact Phone:			
Agency:				Date:			
County:			City, Address:				
Watershed:							
Locational Data:			Lat:		Long:		
Container Description:							
Propane		<input type="checkbox"/>		Fuel Tank		<input type="checkbox"/>	

# Recovery

- Peak
  - 9 OSCs
  - 11 SOSCs
  - 25 ERRS
  - 9 START





# Staging Area

- Count
- Field Characterize
- Bulk
- CST Assistance

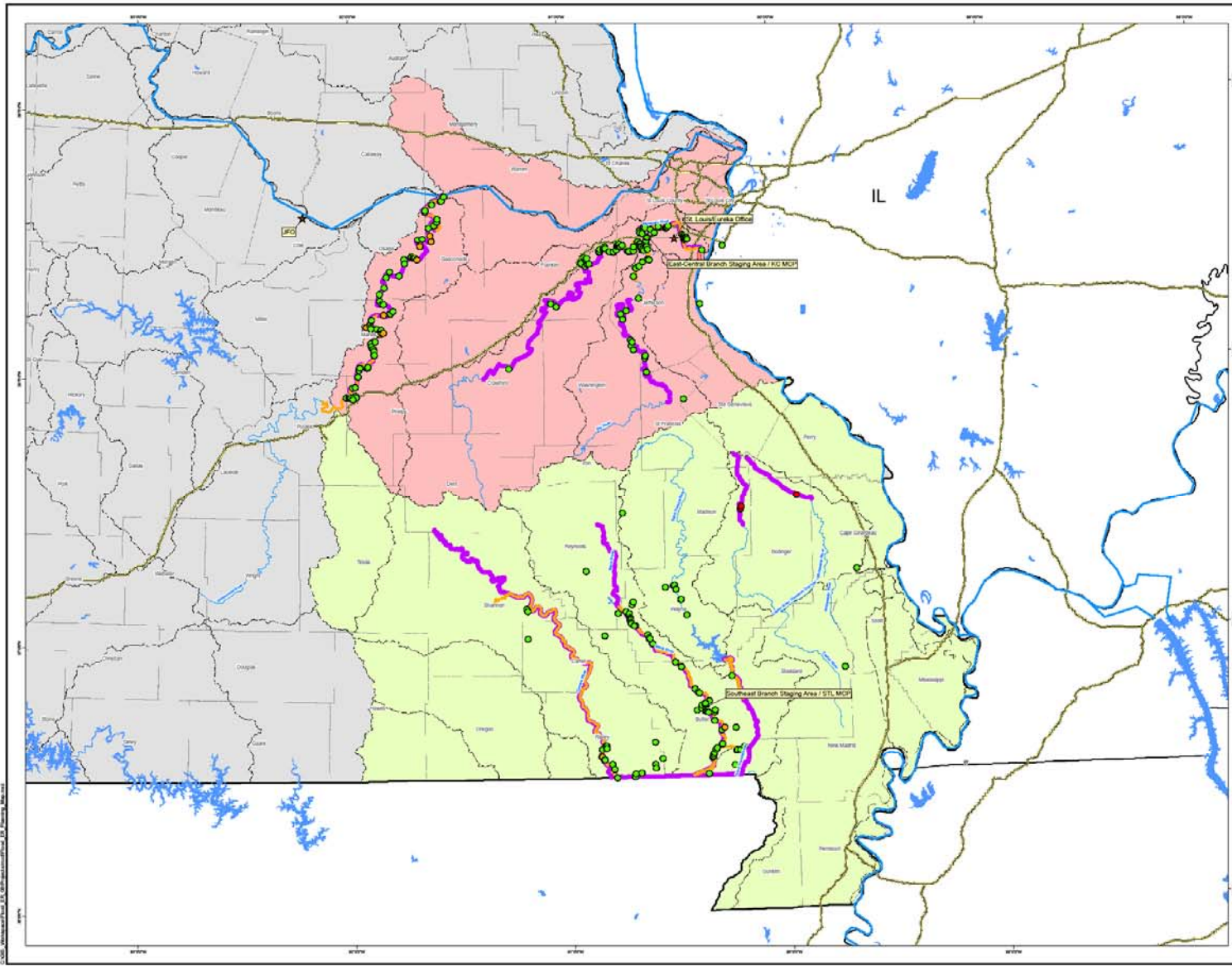


# Containers Recovered

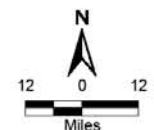
## Operational Period Hazardous Waste Summary

### Container Summary/Totals

Operating Unit Staging Location	Container Type						Location Total
	LPG Tank	Cylinders	Other Large Tank >85 gal	Drum 30-85 gal	Small Container 5-30 gal	Container ≤5 gal	
East/Central Branch	143	51	13	416	213	921	1757
Southeast Branch	16	16	3	50	70	714	869
<b>Category Total</b>	<b>159</b>	<b>67</b>	<b>16</b>	<b>466</b>	<b>283</b>	<b>1635</b>	<b>2626</b>



- Legend**
- Status**
- Closed/Recovered Item
  - Open/Remaining Item
  - Open/Inaccessible Item
  - ★ Operations Location
- Recon Type**
- Boat Recon
  - Air Recon
  - River
  - Lake
  - County Boundary
  - Watershed
- Operating Unit**
- East-Central Branch Operating Unit
  - Southeast Branch Operating Unit



Note: The Environmental Protection Agency does not guarantee the accuracy, completeness, or timeliness of the information shown, and shall not be liable for any injury or loss resulting from the reliance upon the information shown.

Source:

Missouri Flooding 2008  
Missouri, USA

**Figure**  
Recon/Staging Planning Map

# Finance

- ESF 10
  - Obligated: 376,557
  - ERRS/START: 293,178
- JFO 10,500

# Lessons Learned

- Integrate into EOC early
- Worked well with State OSCs in the field and in Unified Command
- Coordination with other assets: CST, MDC, MHP
- Field Reconnaissance Issues
- Scrappers

# www.epaosc.net

**OSC**  
On-Scene Coordinator

United States Environmental Protection Agency **EPA**  
Home

- Home
- Web Sites
- WebEOC
- OSC Directory
- National Forum
- OSC Task Force
- Training
- Health & Safety
- Software & Databases
- Chem & Bio Information
- Regulations
- Forms & Boilerplate Docs
- Equipment
- Maps
- Travel
- Weather
- Resources

This site is intended to be a tool to help streamline the work of OSCs and provide them a forum to share information and lessons learned with OSCs around the country.

**NewsFlash!** OSC Readiness 2006 [Click here for After Action Information](#)

| [EPA OSC Home](#) | [Web Sites](#) | [WebEOC](#) | [OSC Directory](#) | [National Forum](#) | [OSC Task Force](#) | [Training](#) | [Health & Safety](#) | [Software & Databases](#) | [Chem & Bio Information](#) | [Regulations](#) | [Forms & Boilerplate Docs](#) | [Equipment](#) | [Maps](#) | [Travel](#) | [Weather](#) | [Resources](#) |

Questions or Comments? Email: [ERTSupport@epa.gov](mailto:ERTSupport@epa.gov)  
[Security and Privacy Policy](#)