

US EPA ARCHIVE DOCUMENT

Figure 5.6 Diurnal average of $PM_{2.5}$ based on hourly TEOM data.

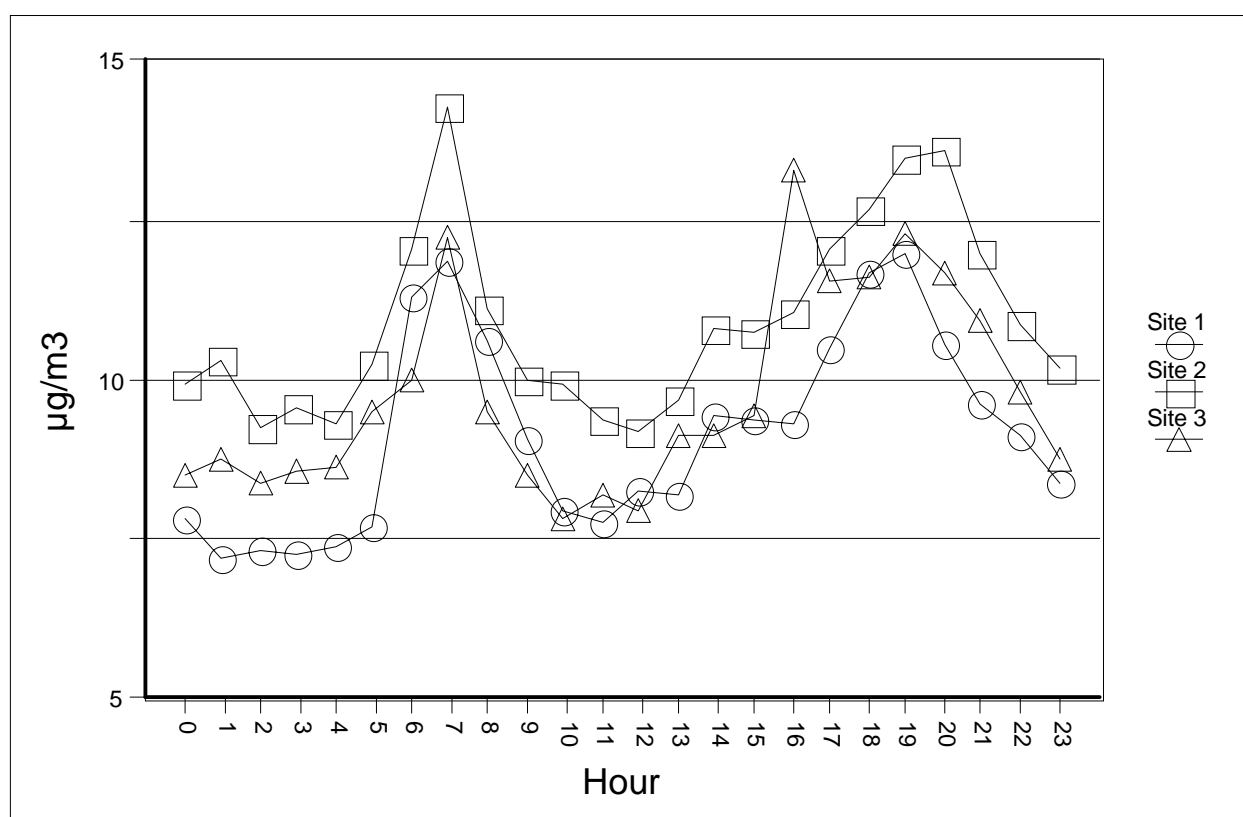


Figure 5.66. Photomicrographs of air samples showing aluminosilicate particles (crustal origin).

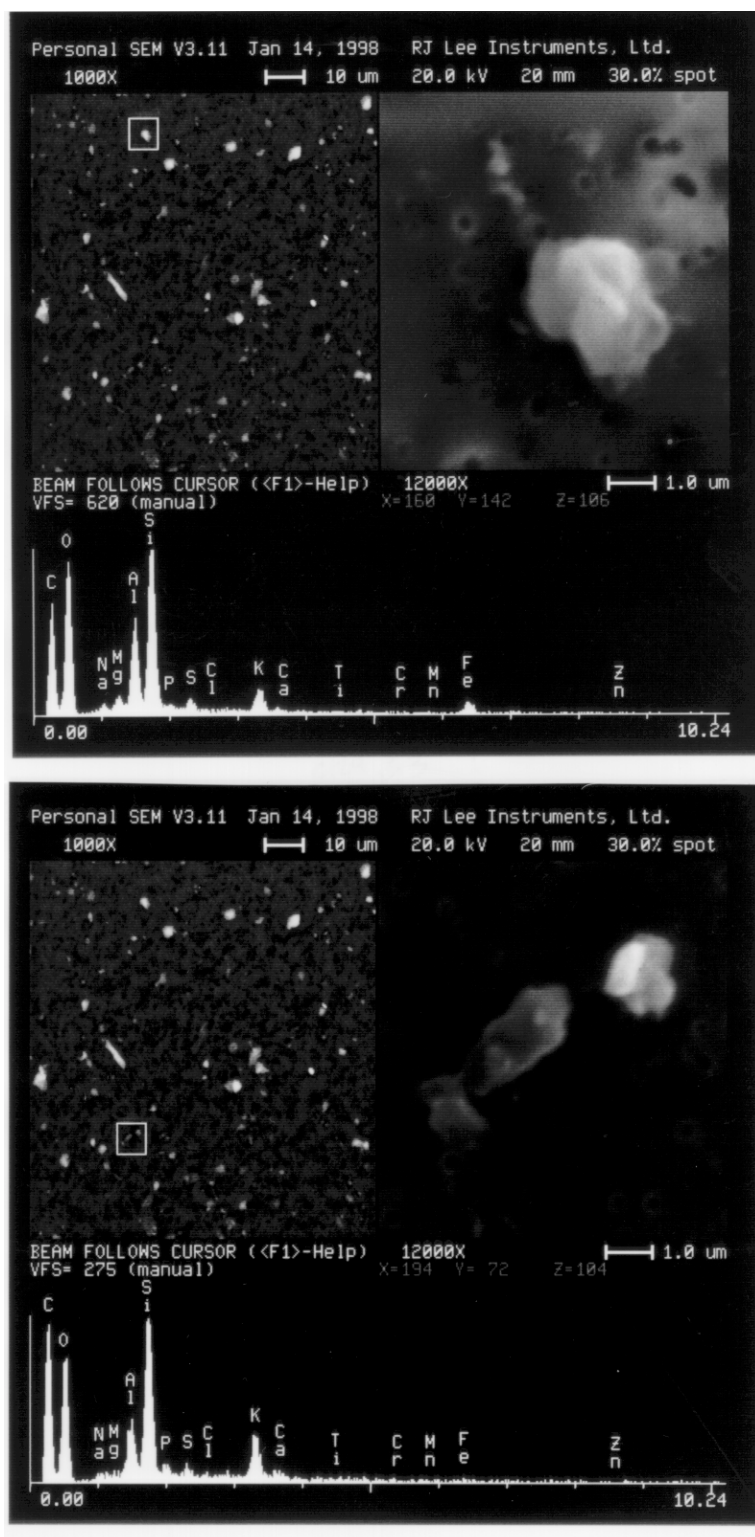


Figure 5.67. Photomicrographs of air samples showing aluminosilicate particles with Ca or S (crustal/marine origin).

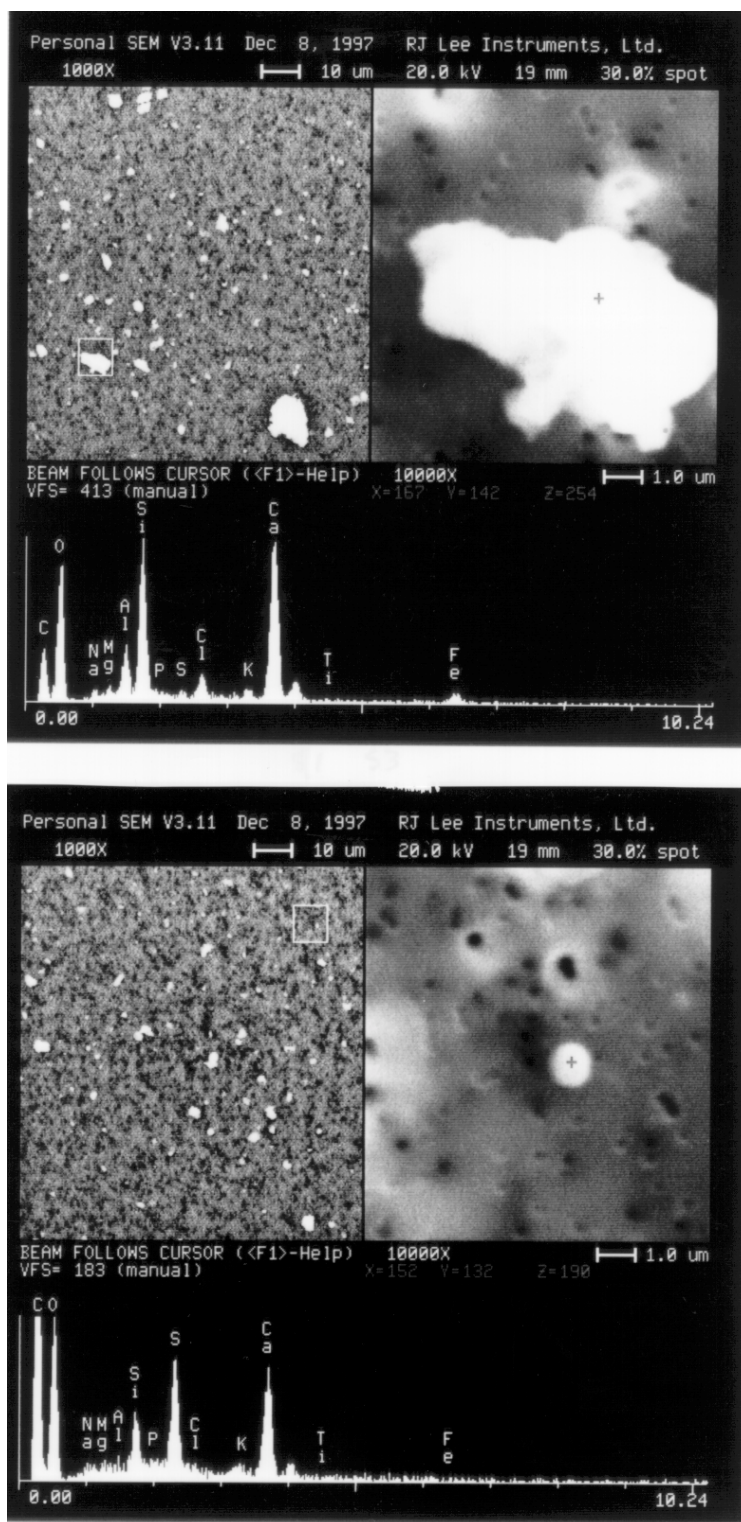


Figure 5.68. Photomicrographs of air samples showing NaCl particles (sea salt origin).

