

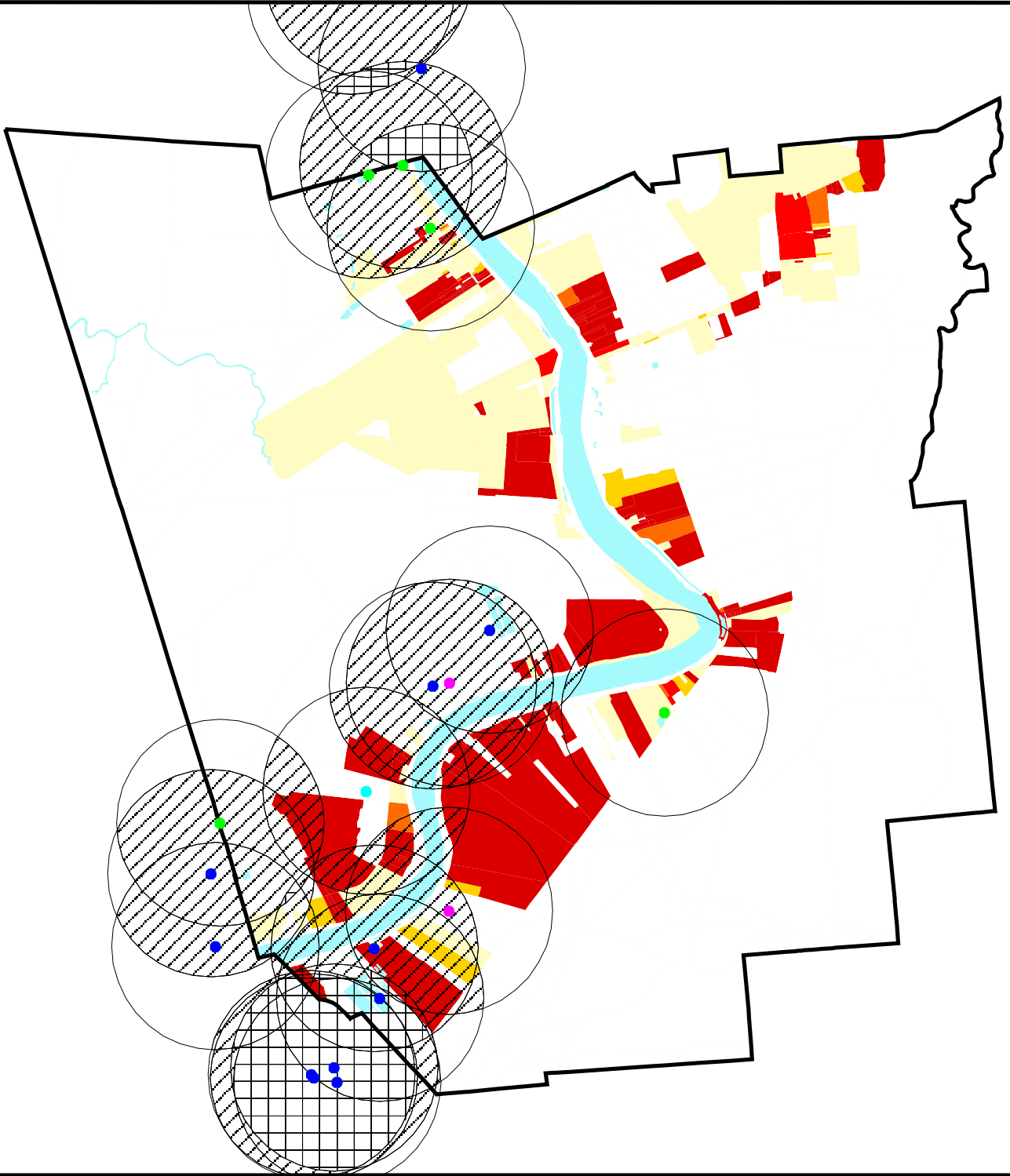
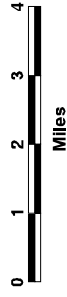
US EPA ARCHIVE DOCUMENT

# St James Parish - 1998 Percent African-American

- Shintech, Inc.
- Iron Reduction Facility
- TRI & TEDI Sites
- TRI Only

- 2 Mile Zones**
- ▨ 1 Facility
  - ▨ 2 - 3 Facilities
  - ▨ 4 - 7 Facilities

- Percent African-American**
- 0 - 30.8
  - 30.8 - 41.1
  - 41.1 - 51.3
  - 51.3 - 61.6
  - 61.6 - 100
  - 0 Population



Sources:  
 U.S. EPA (TRI Database, 1995)  
 LA DEQ (TEDI Database, 1996)  
 Bureau of the Census (TIGER/Line, 1992)  
 Bureau of the Census (PL94-171, 1990)



EPA Region 6  
 Dallas, TX  
 April 6, 1998

