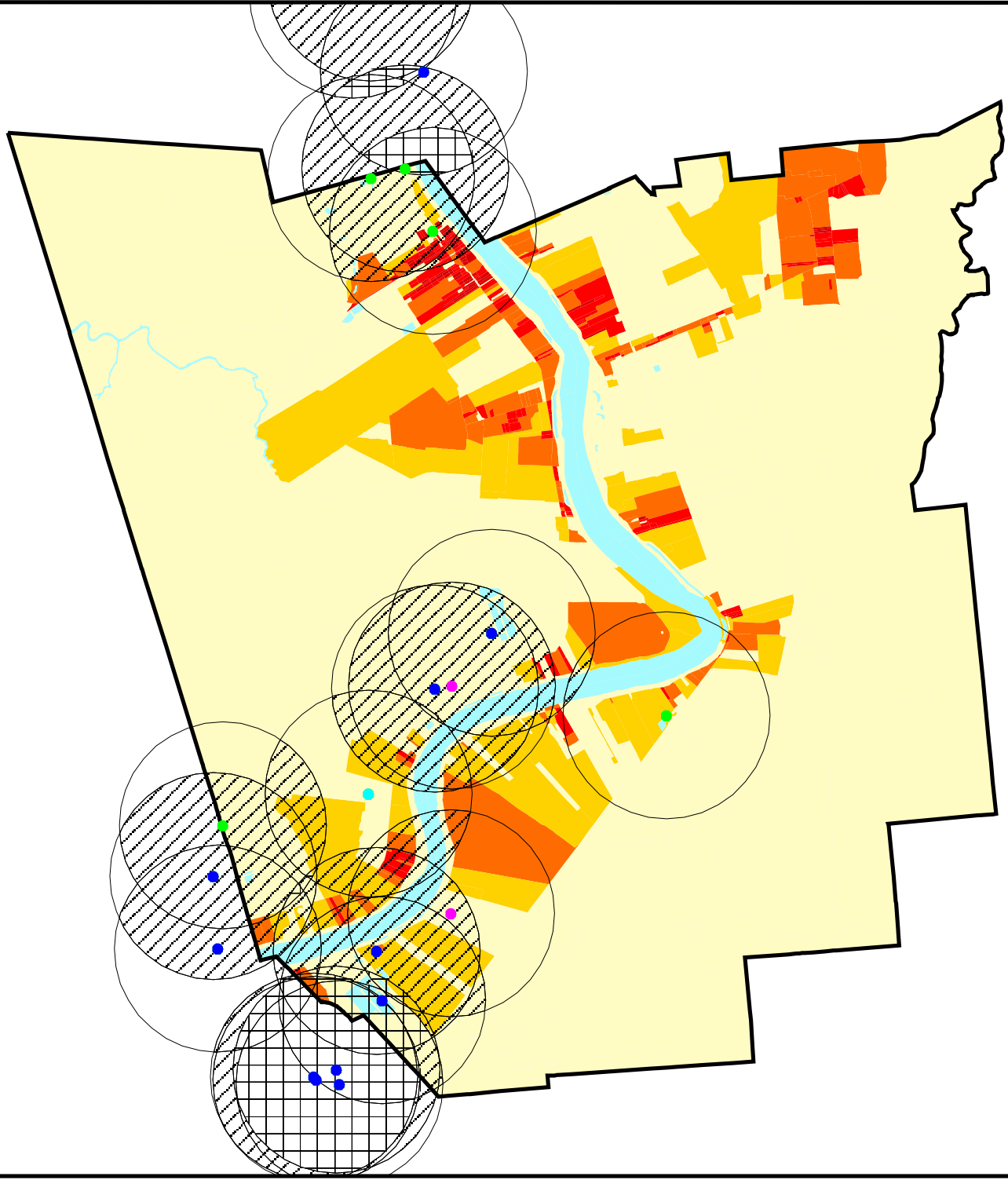
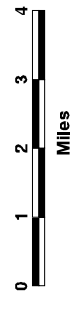
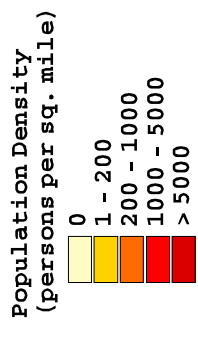


US EPA ARCHIVE DOCUMENT

St James Parish - 1998 Population Density

- Shintech, Inc.
- Iron Reduction Facility
- TRI & TEDI Sites
- TRI Only

- 2 Mile Zones**
-  1 Facility
 -  2 - 3 Facilities
 -  4 - 7 Facilities



Sources:
 U.S. EPA (TRI Database, 1995)
 LA DEQ (TEDI Database, 1996)
 Bureau of the Census (TIGER/Line, 1992)
 Bureau of the Census (PL94-171, 1990)