







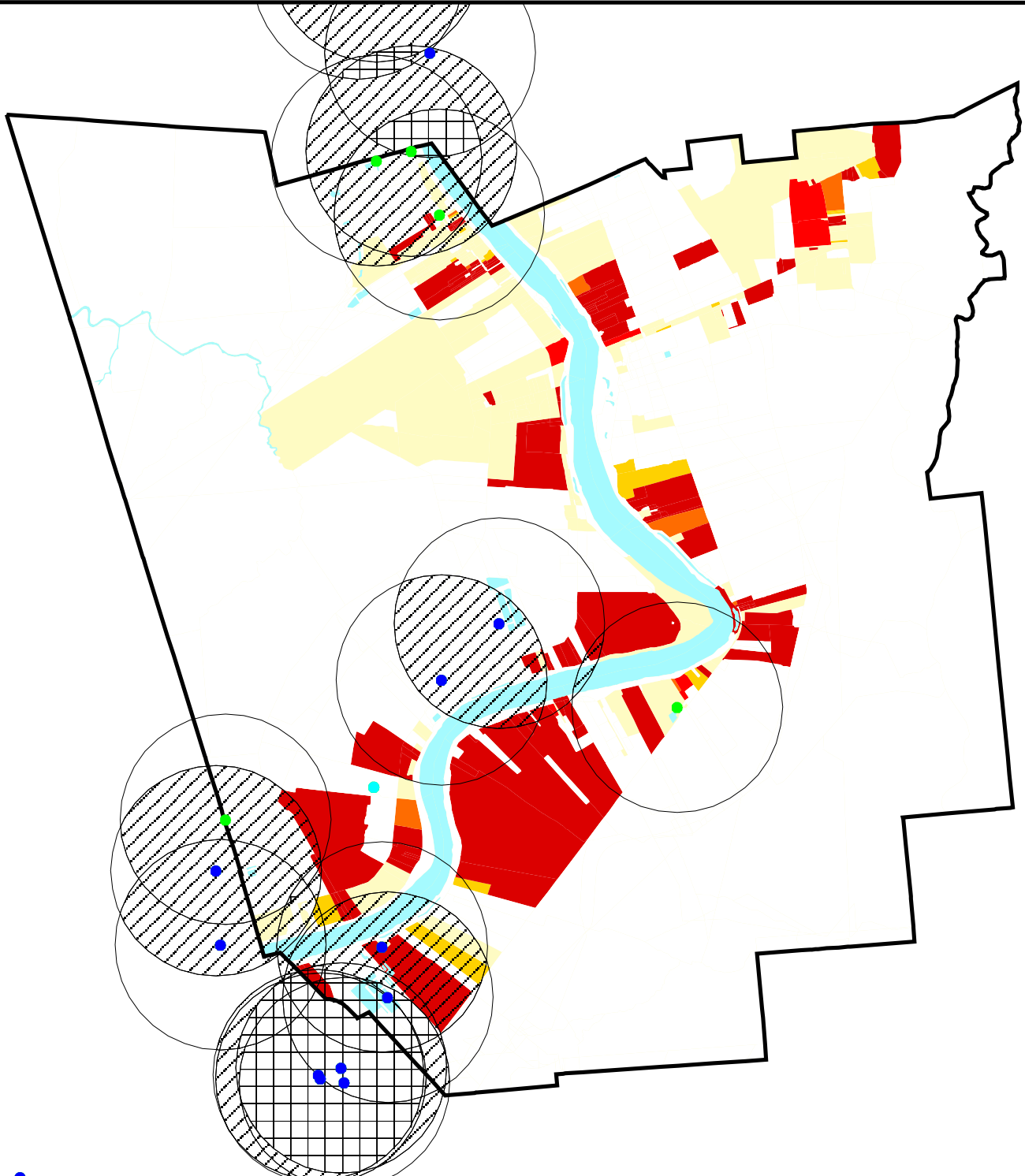
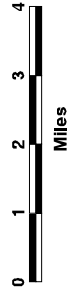
US EPA ARCHIVE DOCUMENT

# St James Parish Percent African-American

- Shintech, Inc.
- TRI & TEDI Sites
- TRI Only

- 2 Mile Zones**
-  1 Facility
  -  2 - 3 Facilities
  -  4 - 7 Facilities

- Percent African-American**
-  0 - 30.8
  -  30.8 - 41.1
  -  41.1 - 51.3
  -  51.3 - 61.6
  -  61.6 - 100
  -  0 Population



Sources:  
 U.S. EPA (TRI Database, 1995)  
 LA DEQ (TEDI Database, 1996)  
 Bureau of the Census (TIGER/Line, 1992)  
 Bureau of the Census (PL94-171, 1990)



EPA Region 6  
 Dallas, TX  
 April 6, 1998

