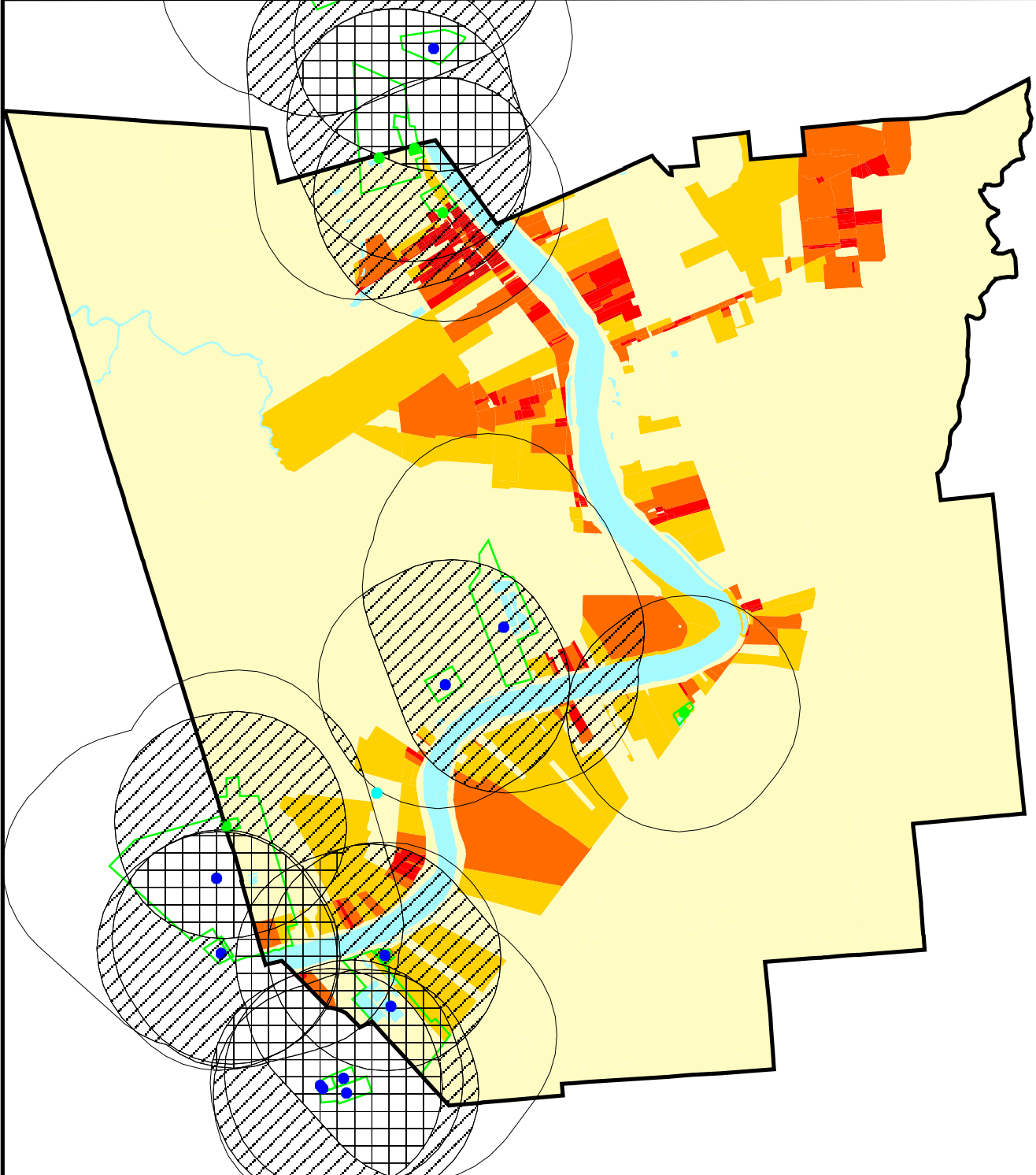
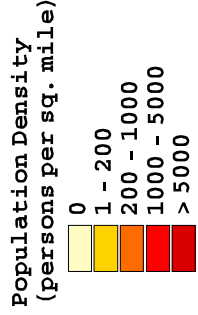


US EPA ARCHIVE DOCUMENT

**St James Parish
Population Density
2 Mile Zone Around Fenceline**

- Shintech, Inc.
- TRI & TEDI Sites
- TRI Only
- Facility Fenceline

- 2 Mile Zones**
- 1 Facility
 - 2 - 3 Facilities
 - 4 - 8 Facilities



Sources:
 U.S. EPA (TRI Database, 1995)
 LA DEQ (TEDI Database, 1996)
 Bureau of the Census (TIGER/Line, 1992)
 Bureau of the Census (PL94-171, 1990)