

US EPA ARCHIVE DOCUMENT

Agenda

- Overview of NEI and EIS (slides 3 – 6)
- Facility inventory structure and minimum requirements for new items (slides 7 – 25)
- Editing existing EIS facilities (slides 26 – 27)
- Maintaining recognized IDs (slides 29 – 30)
- Lat-Lons and other release point QA (slides 31 – 33)
- Building and submitting XML files (slides 34 – 42)
- Using the submittal feedback report (slides 43 – 45)
- Other reports available in EIS (slides 46 – 56)
- Recap of changes for 2011 (slides 57 – 59)

EIS and the NEI

- Emission Inventory System (EIS)
 - Data repository for air emissions data used to create the NEI
 - Contains State, Local, Tribal and EPA-submitted data
 - Can be multiple emissions values for the same unit/process
 - Annual, monthly, daily data
 - Data available via a password-protected web site
 - EIS Gateway <https://eis.epa.gov/eis-system-web/welcome.html>
- National Emission Inventory (NEI)
 - Snapshot in time from EIS
 - Inventory version shared with the public
 - One emissions value per process selected
 - Annual emissions values

S/L/T Reporting Requirement

- Air Emissions Reporting Rule (AERR)
<http://www.epa.gov/ttn/chief/aerr/>
 - Complete criteria pollutant inventory every 3 years
 - All point sources (100 tpy potential to emit threshold)
 - Nonpoint sources
 - Onroad and Nonroad sources
 - Events (wildfires and prescribed fires)
 - 2011 Emissions due 12/31/2012, EIS window opens 6/1/2012
 - Annual reporting for Type A point source facilities
 - SO₂, NO_x, CO with potential to emit $\geq 2,500$ tpy
 - VOC, PM, NH₃ with potential to emit ≥ 250 tpy
 - Pb with potential to emit ≥ 5 tpy (to be amended to agree with Lead NAAQS level of ≥ 0.5 tpy)
 - HAPs are submitted voluntarily by many S/L/Ts and are encouraged as part of an integrated report

Uses of the NEI

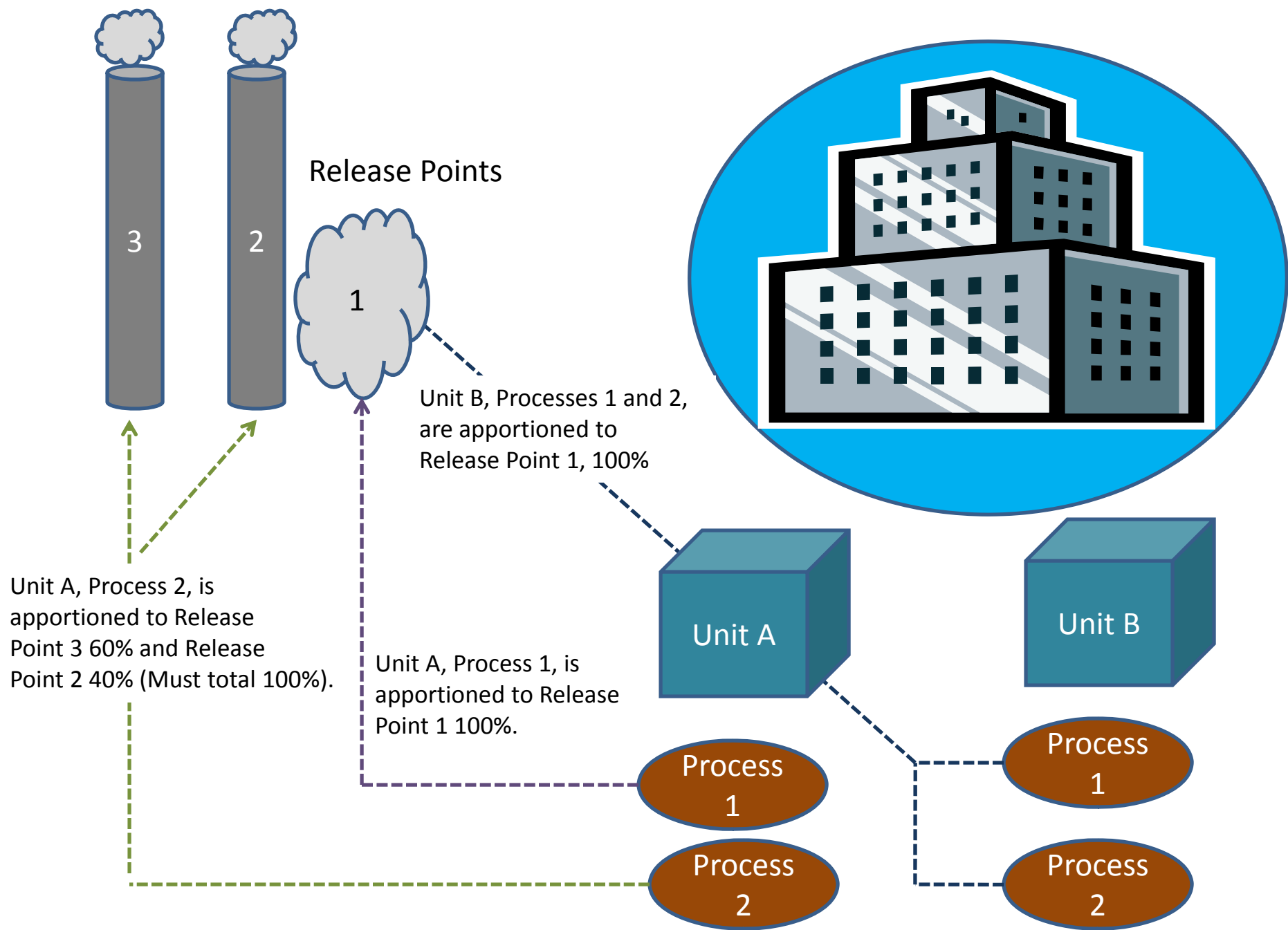
- The NEI is one of the key inputs for :
 - Modeling of national rules – NAAQS reviews, CSAPR, etc
 - Non-attainment Designations
 - NATA Review – toxics risk modeling
 - Trends reports and analyses

Components of the EIS

- Six different data categories
 - Facility Inventory
 - Point Emissions
 - Nonpoint Emissions
 - Onroad Emissions
 - Nonroad Emissions
 - Event Emissions (wildfires and prescribed fires)
 - No biogenic emissions, although these are part of EPA's modeling files

The Facility Inventory

- Information on the physical facility, as opposed to the annual thruputs and emissions. Provides the static framework to which point emissions can be reported each year.
 - Site-level information and location
 - Release point parameters and locations
 - Emission unit information (unit type, design capacity)
 - Emission process information (SCC)
 - Control devices or measures
 - Regulations
- Only changes or additions from year to year need to be reported.
 - EIS will recognize what the changes are if you maintain consistent facility/unit/process/release point IDs each year
- Appendix 2 at <http://www.epa.gov/ttn/chief/net/neip/index.html> provides full CERS schema data elements



Site-level Info Required for New Facility

- State and County FIPS or Tribal Code
- Facility Site Identifier (your Agency's ID)
- Facility Site Identifier Program System Code
- Facility Site Name
- Operating Status (and Status Year if not="OP")
- NAICS
- 4 **Physical** Address Fields : Street, City, State, Zip
- Site-level Latitude and Longitude
 - must be **Decimal Degrees** (*NOT Degrees.MinuteSecond*)

Exceptions for Portable Facilities and Off-Shore Platforms

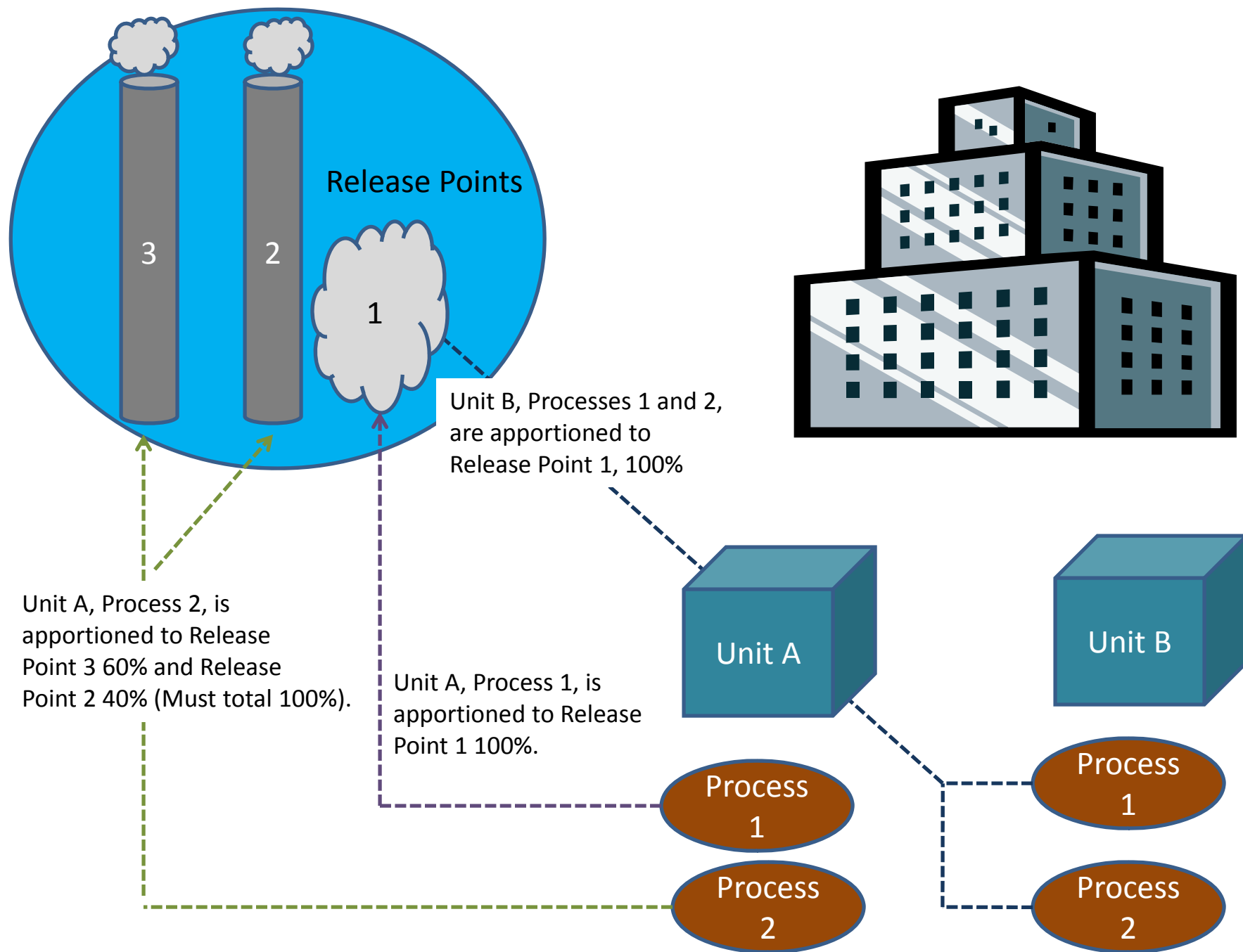
- **Portable Facilities**
 - State FIPS + 777
 - Use “Portable Facility” for FacilitySiteDescription
 - Geographic Coordinates and Physical Address can not be reported.
- **Off-shore Platforms in State Waters**
 - Provide the 5-digit FIPS
 - Use “Offshore Facility” for FacilitySiteDescription
 - Provide the Site-level Geographic Coordinates
 - Use “N/A” for Physical Street Address and City
 - Provide State Abbreviation
 - Use “99999” for Zip Code
- **Off-shore Platforms in Federal Waters**
 - State and County FIPS = 85000
 - USEPA loads emissions estimated by Dept of Interior to EIS

Airports : Aircraft Engines, APUs, GSE

- Prior to 2008 NEI, reported by USEPA as nonpoint county sums
- USEPA added 20,000 airport facilities for 2008 NEI. ALL airports, helipads, seaplane bases now in Facility/Point
 - EPA provides estimates for LTOs and aircraft-related emissions, so only improved or missing local data need be reported
- No nonpoint or nonroad emissions accepted for aircraft engine exhaust, auxiliary power units or ground support equipment, even though NONROAD model calculates APU and GSE
 - aviation gas distribution and filling emissions continue to be reported as nonpoint county sums
- IF S/L/Ts report, use the existing unit and process ID framework to place emissions at same processes as USEPA
 - Units are aircraft types (military, commercial, general aviation, etc)
 - Processes are aircraft make and engine type, indicated by **aircraftenginetype code**. This is now a required field
 - Combinations of SCC plus **aircraftenginetype code** that duplicate existing processes will NOT be accepted as new processes

Rail Yards

- Prior to 2008 NEI, all reported as nonpoint county sums
- USEPA added 800 largest facilities as Facility/Point for 2008
- There may be smaller rail yards not yet in Facility. S/L/Ts may add these as Facility/Point or report in nonpoint, but check Facility Inventory for duplication
- Emissions from yard locomotives only. Emissions from locomotives on rail lines are reported in nonpoint using line segment shapefiles

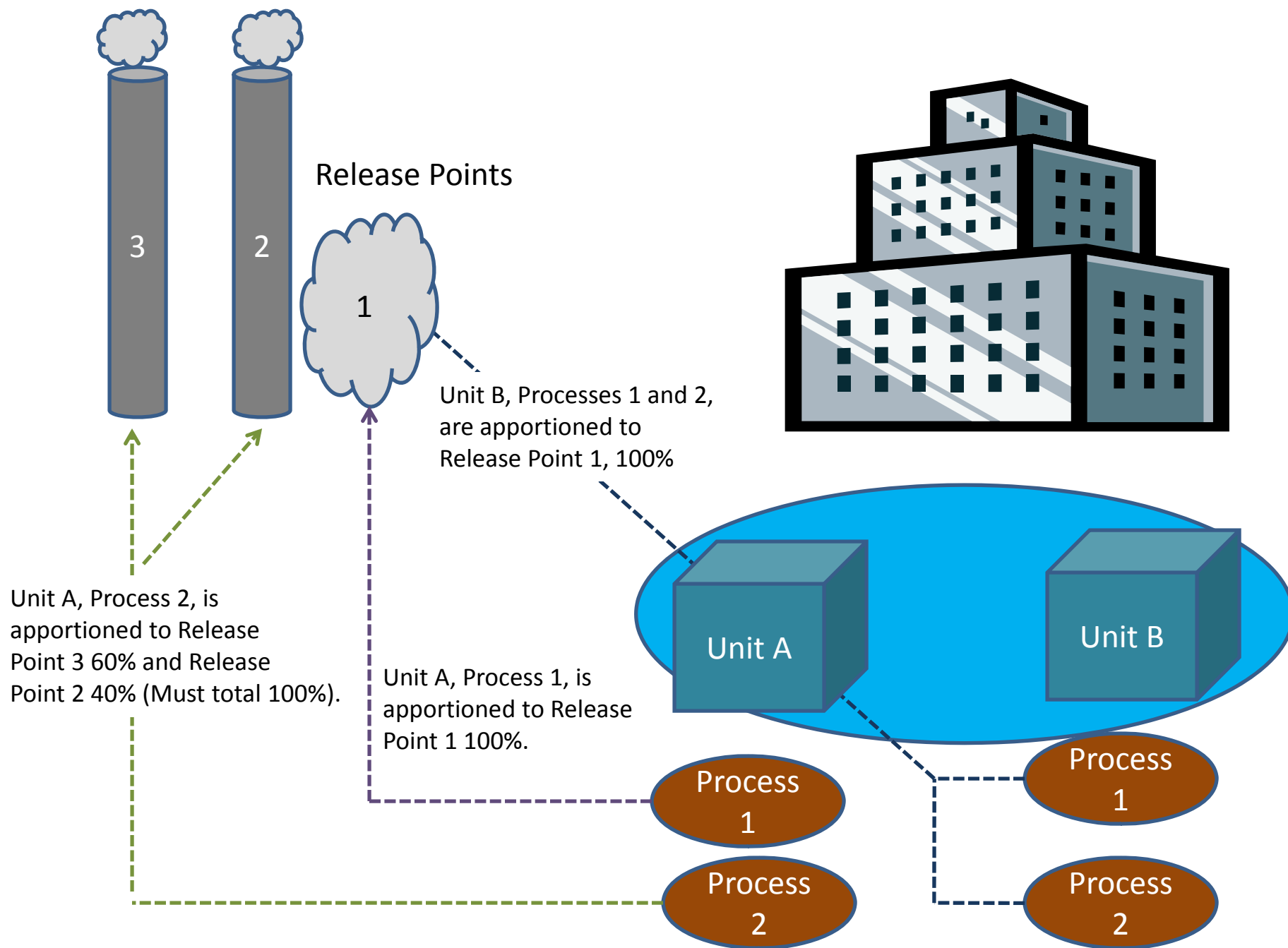


Info Required for New Release Point

- State and County FIPS or Tribal Code
- Facility Site Identifier and Program System Code
- Release Point Identifier (your Agency's ID)
- Release Point Identifier Program System Code
- Operating Status (and Status Year if not="OP")
 - OP, PS, TS
- Release Point Type Code
 - 1 – Fugitive
 - 2 – Vertical
 - 3 – Horizontal
 - 4 – Goose Neck
 - 5 – Vertical with Rain Cap
 - 6 – Downward-Facing Vent

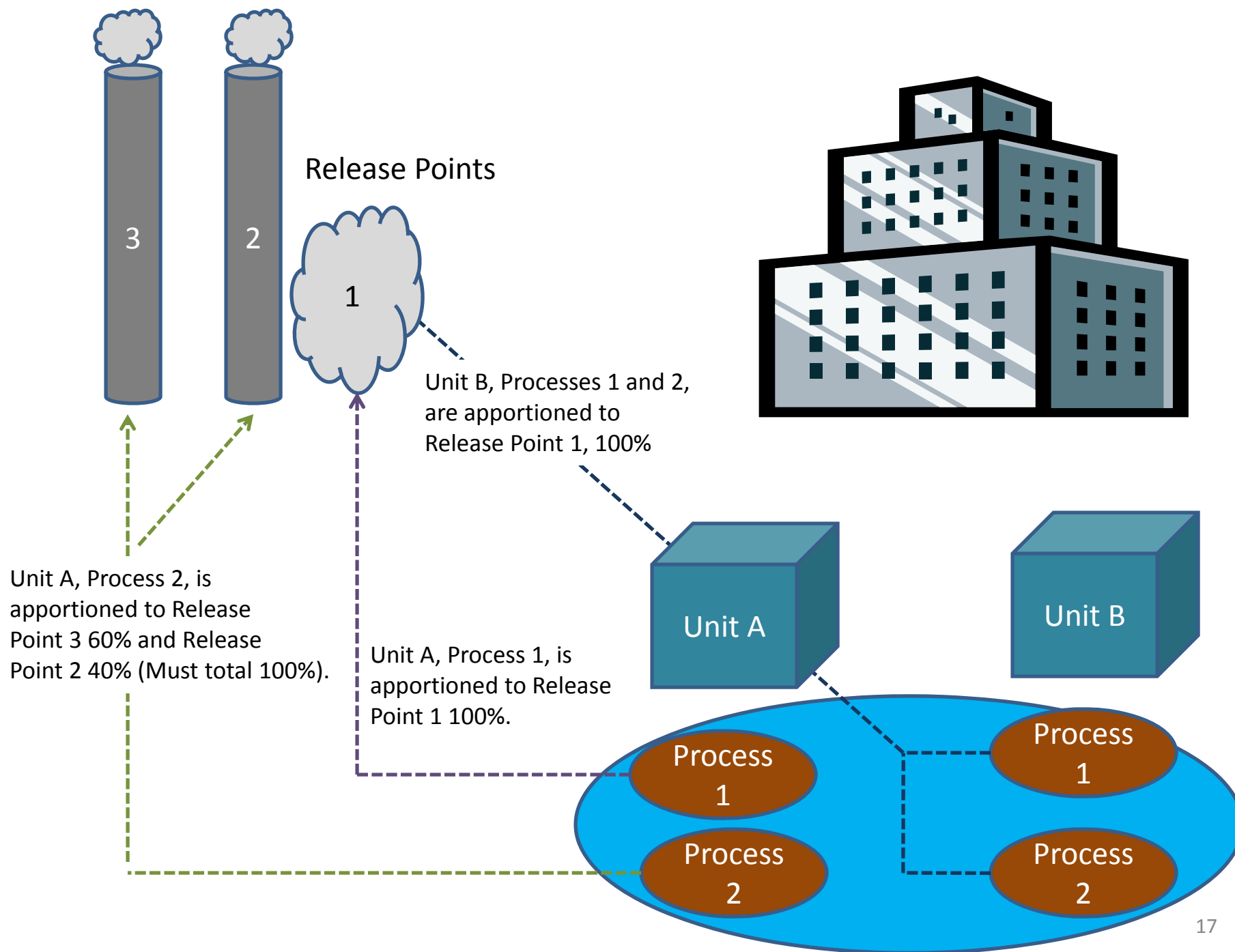
Required if Release Point is a Stack

- Height & Unit of Measure (FT)
- Diameter & Unit of Measure (FT)
- Exit Gas Velocity & Unit of Measure (FPS or FPM) or Exit Gas Flow Rate & Unit of Measure (ACFS or ACFM) or both
 - Error 192 – consistency of Diameter, Velocity, and Flow
- Exit Gas Temperature & Unit of Measure (DEGF)
- Optional : Release Point Lat-Lon Coordinates
 - must be **Decimal Degrees** (*NOT Degrees.MinuteSecond*)



Info Required for New Emission Unit

- State and County FIPS or Tribal Code
- Facility Site Identifier and Program System Code
- Unit Identifier (your Agency's ID)
- Unit Identifier Program System Code
- Operating Status (and Status Year if not="OP")
 - OP, PS, TS
- Unit Type Code (see EIS Gateway for list of 44)
 - 999 = "Miscellaneous" is available if necessary. Don't include this for existing units to avoid overwriting all with 999
- Design Capacity & Unit of Measure is requested for boilers, turbines, engines, heaters, and is a Warning check



Info Required for New Emission Process

- State and County FIPS or Tribal Code
- Facility Site Identifier and Program System Code
- Unit Identifier and Program System Code
- Emissions Process Identifier (your Agency's ID)
- Emissions Process Identifier Program System Code
- Source Classification Code (see EIS Gateway for list)
 - Avoid using non-specific codes such as 399999xx if possible
- AircraftEngineTypeCode – now required for aircraft SCCs
- One or more Release Point Apportionments

Release Point Apportionment

- State and County FIPS or Tribal Code
- Facility Site Identifier and Program System Code
- Unit Identifier and Program System Code
- Emissions Process Identifier (your Agency's ID) and Program System Code
- Release Point Identifier (your Agency's ID)
- Release Point Identifier Program System Code
- Percent of process venting to release point
- A process may be vented to one or more release points
- Total percentages must equal 100

Controls

- Controls are required by AERR to be reported if they exist
 - There is no uncontrolled code
- Either unit OR process level
- Only one control approach may be active at any given time – any new controls submittal replaces the previous completely, for all three components
- Three components must be reported together :
 - Control Approach Component
 - The “parent” of the control group
 - non-pollutant specific percentages – capture, effectiveness
 - Control Measure Component
 - control device codes that make up the control approach
 - Control Pollutant Component
 - Pollutants controlled by the all devices in the overall approach
 - Percent Reduction Efficiency for each pollutant, if available

Control Approach Component

- Facility Site Identifier and Program System Code
- Unit Identifier and Program System Code
- Emissions Process Identifier and Program System Code
 - Reported only if the control approach is at the process level
- First Inventory Year
- Percent Control Approach Capture Efficiency
- Percent Control Approach Effectiveness

Control Measure Component

- Facility Site Identifier and Program System Code
- Unit Identifier and Program System Code
- Emissions Process Identifier and Program System Code
 - Reported only if the control approach is at the process level
- Control Measure Code(s) – at least one required

Control Pollutant

- Facility Site Identifier and Program System Code
- Unit Identifier and Program System Code
- Emissions Process Identifier and Program System Code
 - Reported only if the control approach is at the process level
- Pollutant Code(s) – at least one required
- Optional, and desirable, per pollutant : % reduction achieved by the combination of all control measures
- **New QA Check** – Percent Control Measures Reduction Efficiency cannot be 100% unless there is a ban in use.

Regulations

- Facility Site Identifier and Program System Code
- Unit Identifier and Program System Code
- Emissions Process Identifier and Program System Code
 - Reported only if the regulation is at the process level
- Regulatory Code
 - EPA plans to populate and protect for MACT , Area Source, and Section 129 Rules
 - S/L/Ts can currently add any these regs, but can't protect
 - S/L/Ts can add their non-Federal regs using code SLT-0001
 - Agency Code Text required if you submit this reg code

Editing an Existing Process

- State and County FIPS or Tribal Code
- Facility Site Identifier and Program System Code
- Unit Identifier and Program System Code
- Emissions Process Identifier and Program System Code
- New Source Classification Code, or
- AircraftEngineTypeCode, or
- Last Inventory Year : to end a process
 - Must be = or > most recent emissions reported
- Reapportioning a process to a new release point can only be done on the Gateway

Editing an Existing Facility Site

- Changing the Status Code on a facility
 - State and County FIPS or Tribal Code
 - Facility Site Identifier and Program System Code
 - New Status Code
 - Status Code Year – If status code is other than OP
- Adding the Operating Status Code Year
 - Defined as 1/1/XXXX
 - Error 2249 – “The Operating Status for statuses other than “OP” must be greater than the latest year of emissions submitted to that facility site, except landfills.”

Break Time – 10 Minutes

Maintaining Identifiers Across Years

- You may submit data to EIS using EITHER your Agency's IDs OR the EIS IDs
- Unique and recognized IDs for Sites, Units, Emission Processes and Release Points
- If a Site ID is not recognized by EIS, it checks existing for Potential Duplicate site. But no checks for duplicate units, processes, or release points
- Problems created
 - Growing number of “abandoned” units, processes, rps
 - Emissions reported from non-S/L sources not at “current” S/L process ID will be double-counted in NEI
 - No historical tracking below site level

If You Have to Revise Your IDs

- Individually via EIS Gateway
- Or large batch – use two XML file submittals
 - first XML puts an End Date on the existing IDs
 - Identify the site, unit, rel pt or process using either the EIS IDs or the Agency IDs, Program System Code, and FIPs as currently recorded in EIS
 - End Date when the Agency ID stopped being used by your system
 - second XML to add your new ID to the same item(s)
 - Identify the site, unit, rel pt or process using the EIS IDs
 - The new Agency ID, Program System Code, and FIPs
 - Effective date when the new Agency ID began being used

Geo Coordinates - Lat & Lon

- Required at Site Level
- Optional at Release Point Level (*unlike NIF*)
- Many migrated legacy NIF values at Release Point Level and derived averaged values at Site Level
- Unless you have actual release point coordinates for some of your larger facilities, we suggest reporting Site level only
 - Modeling files will use Site coords for any missing Release Point coords
 - Site center or main emitting point coords preferred
 - Use the Geo Reference Point Code to indicate that your measurement is the entrance or site center or other
- Be careful with any conversions from your system's data
 - **Decimal Degrees** (*NOT Degrees.MinuteSecond*)
 - Sum Longitude whole degrees and decimal portion correctly
 - UTM zone errors

Protected Lat-Lon Coordinates

- Have been verified using Google Earth for accuracy
- Mostly from S/L/T responses to EPA review package in Summer 2011. Some due to later identified discrepancies
- Cannot be overwritten or edited until unprotected by EPA
- Does NOT prevent other data edits to the site or release point
- Errors 1230 and 1231 “... geographic coordinates are protected, the data will not be stored...”
 - Now appear as a separate worksheet in the feedback report
 - Use config reports or Gateway main site list to get coords
 - Working on adding current EIS lat-lon compared to XML-submitted lat-lon

Release Point Parameter Checks

- Fugitive release Height, Width, Length, Angle warnings have been removed
- Stack Temperature has been reset to Critical, with wider range : now -30 to 4000 degrees F
- Consistency of Velocity, Flow, and Diameter
 - Still a warning
 - Next target for improvement after Lat-Lons

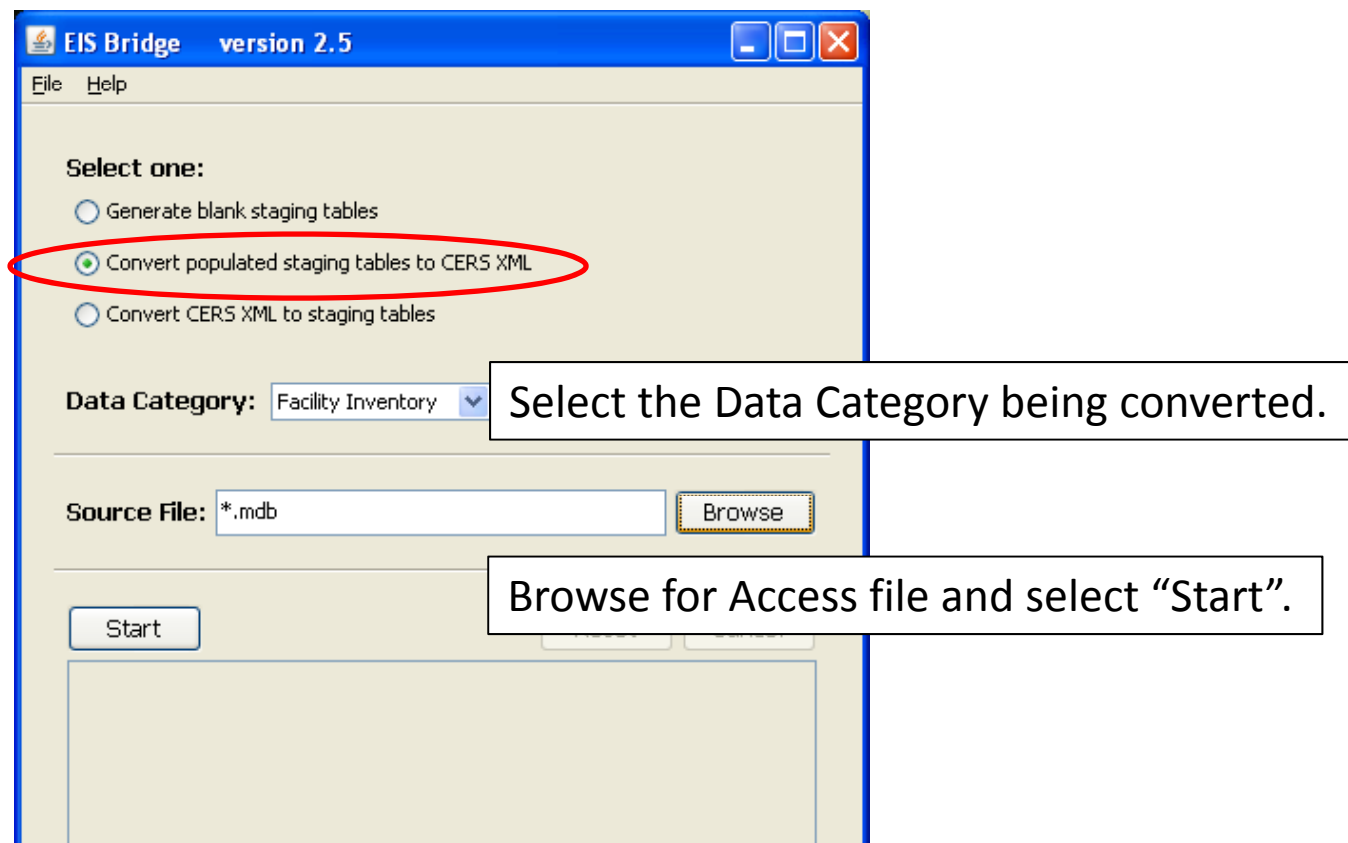
CERS Table

- User Identifier : must be registered EIS account ID (email) with CDX submittal privileges
- Program System Code : of the identifiers in your tables
- Emissions Year : fill this even for Facility Inventory with a 4-digit year with open EIS window

Exchange Header Table

- Your name, Org, Doc Title, Keywords, Comments
 - Free form text fields, not checked or used by EIS
- DataFlowName: must be "EIS_v1_0"
- Property-SubmissionType : must be either "QA" or "Production"
- Property-DataCategory : must be "FacilityInventory" or "Point" or "Nonpoint" or "Onroad" or "Nonroad" or "Event"

Creating XML File via the Bridge Tool



REMEMBER: The Bridge Tool works on Access 2003. If your file is saved as Access 2007 Or later, you will need to do a “save as” to Access 2003 prior to using the Bridge Tool.

Bridge Tool Messages

- “Processing has completed. CERS XML generated! “ or,
- “A valid XML file could not be created....”
 - Widow and Orphan problems : “the content of element Emission Unit is not complete...”
 - Special characters in your tables : “Invalid byte 1 of 1-byte UTF – 8 sequence”
 - MS Word characters introduced by cut and paste, maybe other sources

Submitting the zipped XML File

- Two methods
 - Node-to-node
 - CDX web client (most common method)
 - <https://nodewebbrss.epa.gov/user/Login.aspx>
 - Use Gateway login and password
- QA and Production Environment
 - QA is always open to check your data. Does not change anything in the EIS
 - Production submission is your official submission and will update the EIS

Exchange Network Web Client v2 - Windows Internet Explorer provided by EPA

https://nodewebrss.epa.gov/user/Login.aspx

File Edit View Favorites Tools Help

Convert Select

Exchange Network Web Client v2

U.S. Environmental Protection Agency

Exchange Network Web Client v2.0

Contact Us

Please Sign In.

ID ombrowski.sally@epa.gov

Password

Domain default

default

IAMLdap

EPA

EPA Home | Privacy and Security Notice | Contact

Last updated on Tuesday, January 31st, 2012
URL: http://nodewebrss.epa.gov/user/Login.aspx

38

Local intranet 100%

Exchange Network Node v2 - Windows Internet Explorer provided by EPA

https://nodewebss.epa.gov/user/Login.aspx

File Edit View Favorites Tools Help

Convert Select

Exchange Network Node v2

U.S. Environmental Protection Agency

Exchange Network Web Client v2.0

Welcome to the Node 2.0 Web Interface

RSS/ATOM News Channel: RecoveryChannel RSS ATOM

RSS Channel: Recovery

Published Date: Tue, 31 Jan 2012 08:17:30 -0500

Last Built Date: Tue, 31 Jan 2012 08:17:30 -0500

Description: Recovery Channel for interfacing to Recovery.gov

Language: en-us

Mon, 30 Jan 2012 13:11:01 -0500

2012
Recovery.gov submitted on January 30, 2012

Tue, 24 Jan 2012 13:12:16 -0500
EPA Weekly Financial and Activity Report for January 24, 2012
This is the EPA Weekly Financial and Activity Report for Recovery.gov submitted on January 24, 2012

Tue, 17 Jan 2012 13:47:35 -0500
EPA Weekly Financial and Activity Report for January 17, 2012
This is the EPA Weekly Financial and Activity Report for Recovery.gov submitted on January 17, 2012

Tue, 10 Jan 2012 10:18:21 -0500
EPA Weekly Financial and Activity Report for January 10, 2012
This is the EPA Weekly Financial and Activity Report for Recovery.gov submitted on January 10, 2012

Tue, 03 Jan 2012 12:43:13 -0500
EPA Weekly Financial and Activity Report for January 03, 2012
This is the EPA Weekly Financial and Activity Report for Recovery.gov submitted on January 03, 2012

Tue, 27 Dec 2011 13:40:18 -0500
EPA Weekly Financial and Activity Report for December 27, 2011
This is the EPA Weekly Financial and Activity Report for Recovery.gov submitted on December 27, 2011

Tue, 20 Dec 2011 11:34:57 -0500

39

Done Local intranet 100%

Select EIS from the left-hand side bar

- Home
- My Activity
- My Queries
- My Account
- News Channels
- News Composer
- Data Exchanges
- Recovery
- EIS**
- FRS
- WCIT
- Operations
- Download
- Submit
- Query
- Solicit
- Execute
- Searches
- Service Search
- History Search
- RSS Search
- Full Text Search
- Advanced

Exchange Network Node v2 - Windows Internet Explorer provided by EPA

https://nodewebrrss.epa.gov/user/EIS.aspx

File Edit View Favorites Tools Help

Convert Select

Exchange Network Node v2

U.S. Environmental Protection Agency

Exchange Network Web Client v2.0

EIS_v1_0 Data Exchange (Show Help...)

Select Document: Browse...

Emails to Notify:

Submit

Browse for your **ZIPPED XML** submission file.
Add any emails besides the one given in the CERS table.
Then select "Submit".

40

Done Local intranet 100%

Email Notifications

- First email, from “CDXNotification”, immediate
 - Transaction Status: **Pending**
- Second email, also from “CDXNotification” , when EIS completes processing
 - Transaction Status: **Completed**. Feedback report is available at EIS Gateway
- Third email, from “noreply” (EIS Gateway) , on quarter hours
 - Status : Completed or **Failed**
 - Wrong file submission error – Usually a zipped Access file is submitted instead of the xml file
 - Window closed error – “User, agency, submission year not authorized”
 - Completed might be for an XML file containing no data
- Go to EIS Gateway and read the Feedback Report and resolve any critical errors and Potential Duplicates
- DO NOT SUBMIT A POINT EMISSIONS FILE IMMEDIATELY FOLLOWING A FACILITY SUBMISSION

The Submittal Feedback Report

- [Sample Feedback Report .xlsx](#)
 - compare the add and update counts in Statistics tab versus your staging tables
 - Be wary of too many adds – you are mostly updating existing EIS facilities
 - All critical errors (except protected lat-lon) should be addressed prior to your Production submission
 - Check and resolve the potential duplicates
 - Review the warning messages too

Feedback Report Statistics

Component	Added	Updated
FacilitySite	1	32
FacilityIdentification	1	32
AlternativeFacilityName	0	0
EmissionsUnit	72	2602
Regulation	0	0
ControlApproach	0	0
AlternativeUnitIdentification	72	2602
EmissionsProcess	115	3576
ReleasePoint	2605	1206
Total	2866	10050

QA and Production Error Checks

- The same set of checks are applied to both
- Error 1989 in QA : release point ID in apportionment must exist
 - EIS is checking against release points already saved in EIS. If you are creating the release point ID in the same XML as apportionment, this error should disappear in Production feedback

When will my data show up in EIS?

- Facility Inventory data will show in the Gateway view screens and in the Facility Configuration Reports immediately
- Individual Emissions values at the process level will show in the Gateway screens immediately
- Any Emissions Sums (Unit or Facility totals on Gateway or Reports) are refreshed in batch overnight
- XML Snapshots – refreshes are done in batch overnight, but only for items requested via Reports pages

Agency Submission History Report

EIS - Windows Internet Explorer provided by EPA

https://eis.epa.gov/eis-system-web/reports/analysis/agencySubmissionHistory.html

File Edit View Favorites Tools Help

Convert Select

EIS

Page Tools

VIEW/ADD/EDIT

- » Facility Inventory and Point Emissions
- » Potential Duplicate Facilities
- » Merge Processes
- » Nonpoint/ Onroad/ Nonroad Emissions
- » Event Emissions
- » NCD Activity Data
- » Inventory Selection

REPORTS

- » Request Reports
- » Report Downloads
- » Large File Download
- » Feedback Reports
- » Agency Submission History Report

REFERENCE DATA

- » Reporting Code Tables
- » QA Checks
- » View Dataset Identifiers
- » Inventory Cycle Management

Agency Submission History Report

Select inventory year

Inventory Year: 2008

Show 10 entries

Select the inventory year of interest

Search:

Agency Organization	Region Code	Facility Inventory	Point	Nonpoint	Onroad	Nonroad	Event
Alabama Department of Environmental Management	04	2011-10-11 09:40 AM	2011-04-04 04:42 PM	2011-02-17 05:38 PM	N/A	N/A	N/A
Alaska Department of Environmental Conservation	10	2010-09-16 12:59 PM	2010-09-24 01:31 PM	2010-05-04 06:40 PM	N/A	N/A	2011-11-21 07:21 PM
Allegheny County Health Department	03	2010-05-19 12:32 PM	2011-02-15 02:11 PM	N/A	N/A	N/A	N/A
American Samoa		N/A	N/A	N/A	N/A	N/A	N/A
Arapahoe Tribe of the Wind River Reservation		N/A	N/A	N/A	N/A	N/A	N/A
Arizona Department of Environmental Quality	09	2010-11-09 12:20 PM	2011-11-04 02:29 PM	2010-11-16 01:31 PM	N/A	N/A	N/A
Arkansas Department of Environmental Quality	06	2010-04-07 10:22 AM	2011-02-18 10:49 AM	2011-11-01 09:30 AM	2010-05-06 04:04 PM	N/A	N/A
Assiniboine and Sioux Tribes of the Fort Peck Indian Reservation		N/A	N/A	N/A	N/A	N/A	N/A
Bishop Paiute Tribe		N/A	N/A	N/A	N/A	N/A	N/A
Blackfeet Tribe of the Blackfeet Indian Reservation of Montana		N/A	N/A	N/A	N/A	N/A	N/A

Local intranet 100%

Agency Submission History Report

EIS - Windows Internet Explorer provided by EPA

https://eis.epa.gov/eis-system-web/reports/analysis/facilitySubmissionStatus.html?inventoryYear=2008&agencyId=-1

File Edit View Favorites Tools Help

Convert Select

EIS

EIS Gateway
Sally Dombrowski; EIS: Content Manager Role, Authenticated Role, Inventory Selector Role, Inventory Developer Role, Account Manager Role

VIEW/ADD/EDIT

- » Facility Inventory and Point Emissions
- » Potential Duplicate Facilities
- » Merge Processes
- » Nonpoint/ Onroad/ Nonroad Emissions
- » Event Emissions
- » NCD Activity Data
- » Inventory Selection

REPORTS

- » Request Reports
- » Report Downloads
- » Large File Download
- » Feedback Reports
- » Agency Submission History Report

REFERENCE DATA

Facility Submission Status Report

▼ Agency

Agency Description: Alabama Department of Environmental Management
Inventory Year: 2008

Show 10 entries Search:

Operating Status Code	Facility Site Count	Facility Sites Reporting Emissions Count	# Facility Sites Remaining
OP - EXPECTED	350	308	42
OP - TOTAL	962	309	653
PS - EXPECTED	35	4	31
PS - TOTAL	37	4	33

Showing 1 to 4 of 4 entries First Previous 1 Next Last

Download Results: CSV

Note: Expected means that the agency is expected to report emissions for this facility based upon the existence of an agency identifier and the status being operational for the current inventory year.

Done Local intranet 100%

Agency Submission History Report

EIS Facility ID	State and County Code	Agency System Code	Agency ID	Facility Name	Operating Status	Operating Status Year	Expected?	NAICS Code	Facility Type	Process Count	Pollutant Count
965011	1027	ADEM	10	3D Woodcraft Inc	OP	2008	yes	337122		2	5
1018811	1093	ADEM	4	3M Company	OP	2008	yes	327215		30	16
999511	1103	ADEM	9	3M Company	OP	2008	yes	325998		98	31
10535911	1067			Abbeville Muni	OP	2008	no	48811	Airport		
1037511	1067			Abbeville Sanitary Landfill	OP	2008	no	562212	Landfill		
7213111	1037	ADEM	S005	AbitibiBow ater	OP	2008	yes	321113		6	18
10755811	1133			ADDISON MUNI	OP	2008	no	48811	Airport		
1076711	1097			Addsco Landfill	OP	2008	no	562212	Landfill		
887711	1115	ADEM	30	AFCO Architectural Products	OP	2008	yes	326199		2	3
560511	1003			Airport Landfill	OP	2008	no	562212	Landfill		

How do I get data out of EIS?

EIS - Windows Internet Explorer provided by EPA

https://eis.epa.gov/eis-system-web/reports/allReports/list.html

File Edit View Favorites Tools Help

Convert Select

EIS

EIS Gateway
Sally Dombrowski; EIS; Content Manager Role, Authenticated Role, Inventory Selector Role, Inventory Developer Role, Account Manager Role

VIEW/ADD/EDIT

- » Facility Inventory and Point Emissions
- » Potential Duplicate Facilities
- » Merge Processes
- » Nonpoint/ Onroad/ Nonroad Emissions
- » Event Emissions
- » NCD Activity Data
- » Inventory Selection

REPORTS

- » **Request Reports**
- » Report Downloads
- » Large File Download
- » Feedback Reports
- » Agency Submission History Report

REFERENCE DATA

Request Reports

▼ **Facility Snapshot**

All Facility Inventory data elements in CERS XML format. Snapshot updates can be requested and will be generated overnight.

Report Name	Report Description
By Responsible Agency	All facilities within a single S/L/T Agency's jurisdiction are included, whether added to EIS by the S/L/T or by EPA. Both EIS and S/L/T Agency identifiers are provided.
By Facility Source Type	All facilities which have been tagged as a single specific Facility Source Type are included. Only EIS identifiers are provided.

▼ **Facility Configuration Reports**

Facility Inventory data elements at various levels of detail in a flat file CSV format. Can filter by a variety of criteria depending on level of detail requested. Requests run every 15 minutes.

Report Name	Report Description
Facility Configuration	7 reports providing details of different aspects of the Facility Configurations, across all Agencies, filterable by geography, NAICs, Facility Type, Oper Status or Reg Code. Only EIS identifiers provided.

▼ **Emissions Snapshot**

All Emissions data elements in CERS XML format for Point, Nonpoint, Onroad, Nonroad, or Event emissions. Can be run for either S/L/T Agency reported emissions or for USEPA emissions datasets. Data is returned at Process ID or SCC level detail. Snapshot updates can be requested and will be generated overnight.

Report Name	Report Description
By Responsible Agency	Point, Nonpoint, Onroad, Nonroad, Event emissions data for a single S/L/T Agency's jurisdiction. Both EIS and S/L/T

Local intranet 100%

Reports - Snapshots

EIS - Windows Internet Explorer provided by EPA

https://eis.epa.gov/eis-system-web/reports/allReports/list.html

File Edit View Favorites Tools Help

Convert Select

EIS

Home RSS Print Page Tools

EIS Gateway

Sally Dombrowski; EIS; Content Manager Role, Authenticated Role, Inventory Selector Role, Inventory Developer Role, Account Manager Role

VIEW/ADD/EDIT

- » Facility Inventory and Point Emissions
- » Potential Duplicate Facilities
- » Merge Processes
- » Nonpoint/ Onroad/ Nonroad Emissions
- » Event Emissions
- » NCD Activity Data
- » Inventory Selection

REPORTS

- » Request Reports
- » Report Downloads
- » Large File Download
- » Feedback Reports
- » Agency Submission History Report

REFERENCE DATA

Request Reports

▼ **Facility Snapshot**

All Facility Inventory data elements in CERS XML format. Snapshot updates can be requested and will be generated overnight.

Report Name	Report Description
By Responsible Agency	All facilities within a single S/L/T Agency's jurisdiction are included, whether added to EIS by the S/L/T or by EPA. Both EIS and S/L/T Agency identifiers are provided.
By Facility Source Type	All facilities which have been tagged as a single specific Facility Source Type are included. Only EIS identifiers are provided.

- Facility Configuration Reports
- Emissions Snapshot
- Emissions Summaries
- Event Comparisons
- Downloads

Local intranet 100%

Reports - Snapshots

EIS - Windows Internet Explorer provided by EPA

https://eis.epa.gov/eis-system-web/snapshot/list.html

File Edit View Favorites Tools Help

Convert Select

EIS

» Facility Inventory and Point Emissions

» Potential Duplicate Facilities

» Merge Processes

» Nonpoint/ Onroad/ Nonroad Emissions

» Event Emissions

» NCD Activity Data

» Inventory Selection

REPORTS

» Request Reports

» Report Downloads

» Large File Download

» Feedback Reports

» Agency Submission History Report

REFERENCE DATA

» Reporting Code Tables

» QA Checks

» View Dataset Identifiers

» Inventory Cycle Management

» EIS Bridge

Search Criteria

Inventory Year » Do Not Use

Emiss Snaps » All data sets included.

Facility Snaps » All agencies included.

Data Category » All data categories included.

Status » Do Not Use

Visibility » Do Not Use

» Inventory Year - Do Not Use

» Emissions Snapshot - Select One or More Data Sets

▼ Facility Snapshot - Select One or More Geographic Areas

Show 10 entries Search:

Agency Name	Agency Type
Alabama Department of Environmental Management	State
Alaska Department of Environmental Conservation	State
Allegheny County Health Department	Local Agency
American Samoa	State
Arapahoe Tribe of the Wind River Reservation	Tribal
Arizona Department of Environmental Quality	State
Arkansas Department of Environmental Quality	State
Assiniboine and Sioux Tribes of the Fort Peck Indian Reservation	Tribal
Bishop Paiute Tribe	Tribal
Blackfeet Tribe of the Blackfeet Indian Reservation of Montana	Tribal

Showing 1 to 10 of 158 entries

First Previous 1 2 3 4 5 Next Last

» Data Category - Select One or More Data Categories

» Data Set Visibility - Do Not Use

Local intranet 100%

Reports - Snapshots

EIS - Windows Internet Explorer provided by EPA

https://eis.epa.gov/eis-system-web/snapshot/list.html

File Edit View Favorites Tools Help

EIS

EIS Gateway

Ron Ryan; EIS; ContentManager Role, Authenticated Role, Inventory Developer Role

VIEW/ADD/EDIT

- »Facility Inventory and Point Emissions
- »Potential Duplicate Facilities
- »Merge Processes
- »Nonpoint/ Onroad/ Nonroad Emissions
- »Event Emissions
- »NCD Activity Data
- »Inventory Selection

REPORTS

- »Request Reports
- »Report Downloads
- »Large File Download
- »Feedback Reports
- »Agency Submission History Report

REFERENCE DATA

- »Reporting Code Tables

Facility or Emissions Snapshot (XML)

Search Criteria

Inventory Year »Do Not Use

Emiss Snaps »All data sets included.

Facility Snaps »Alabama Department of Environmental Management

Data Category »Facility Inventory

Status »Do Not Use

Visibility »Do Not Use

Show 10

	Inventory Year - Do Not Use	Data Set	Data Category	Last Submission Date	Last Generation Date
Request OR Download	2008	Alabama Department of Environmental Management	Facility Inventory	2011-12-23 08:47 AM	2011-11-17 06:36 PM

Showing 1 to 1 of 1 entries

Download Results: [CSV...](#)

[Edit Search Criteria](#)

start Mail - Inbox - IBM Lot... C:\Documents and Se... EIS - Windows Intern... Microsoft PowerPoint ... Microsoft Excel - Age... 11:41 PM

Reports – Facility Configuration

EIS - Windows Internet Explorer provided by EPA

https://eis.epa.gov/eis-system-web/reports/allReports/list.html

File Edit View Favorites Tools Help

Convert Select

EIS

Home RSS Print Page Tools

VIEW/ADD/EDIT

- » Facility Inventory and Point Emissions
- » Potential Duplicate Facilities
- » Merge Processes
- » Nonpoint/ Onroad/ Nonroad Emissions
- » Event Emissions
- » NCD Activity Data
- » Inventory Selection

REPORTS

- » Request Reports
- » Report Downloads
- » Large File Download
- » Feedback Reports
- » Agency Submission History Report

REFERENCE DATA

- » Reporting Code Tables
- » QA Checks
- » View Dataset Identifiers
- » Inventory Cycle Management

Request Reports

- » Facility Snapshot
- ▼ Facility Configuration Reports

Facility Inventory data elements at various levels of detail in a flat file CSV format. Can filter by a variety of criteria depending on level of detail requested. Requests run every 15 minutes.

Report Name	Report Description
Facility Configuration	7 reports providing details of different aspects of the Facility Configurations, across all Agencies, filterable by geography, NAICs, Facility Type, Oper Status or Reg Code. Only EIS identifiers provided.
- » Emissions Snapshot
- » Emissions Summaries
- » Event Comparisons
- » Downloads

Local intranet 100%

Reports – Facility Configuration Report

The screenshot shows a web browser window titled "EIS - Windows Internet Explorer provided by EPA". The address bar displays the URL <https://eis.epa.gov/eis-system-web/reports/facilityInventory/criteria.html>. The browser interface includes a menu bar (File, Edit, View, Favorites, Tools, Help) and a toolbar with icons for back, forward, home, and search. The main content area is titled "Facility Configuration Reports" and is divided into two main sections: "Report Criteria" and "Report Type".

Report Criteria

Report Type	» A report type is required
Geography	» All geographic regions included.
Source Types	» all Source Types included.
Facility Status	» No operating statuses selected.
Regulations	» No regulations selected.
Release Point Status	» No operating statuses selected.
Pollutants	» No pollutants selected
Program System Code	» No program system codes selected

Report Type

Configuration: Regulation
Configuration: Process and Unit
Configuration: Release Point
Configuration: Facility
Configuration: Facility Alternate Identifiers
Configuration: Unit Alternate Identifiers
Configuration: Control

Regions

States
Tribes
Counties

Left Navigation Panel:

- VIEW/ADD/EDIT**
 - » Facility Inventory and Point Emissions
 - » Potential Duplicate Facilities
 - » Merge Processes
 - » Nonpoint/ Onroad/ Nonroad Emissions
 - » Event Emissions
 - » NCD Activity Data
 - » Inventory Selection
- REPORTS**
 - » Request Reports
 - » Report Downloads
 - » Large File Download
 - » Feedback Reports
 - » Agency Submission History Report
- REFERENCE DATA**
 - » Reporting Code Tables
 - » QA Checks
 - » View Dataset Identifiers
 - » Inventory Cycle Management

The bottom status bar shows "Local intranet" and a zoom level of "100%".

Report Downloads

EIS - Windows Internet Explorer provided by EPA

https://eis.epa.gov/eis-system-web/reports/downloads/list.html

File Edit View Favorites Tools Help

Convert Select

EIS

Page Tools

EIS Gateway

Sally Dombrowski; EIS; Content Manager Role, Authenticated Role, Inventory Selector Role, Inventory Developer Role, Account Manager Role

VIEW/ADD/EDIT

- » Facility Inventory and Point Emissions
- » Potential Duplicate Facilities
- » Merge Processes
- » Nonpoint/ Onroad/ Nonroad Emissions
- » Event Emissions
- » NCD Activity Data
- » Inventory Selection

REPORTS

- » Request Reports
- » Report Downloads
- » Large File Download
- » Feedback Reports
- » Agency Submission History Report

REFERENCE DATA

Reports Available for Download

Show 10 entries Search:

	Report Type	Time Requested	Time Generated	First Name	Last Name
	State/Tribal by Source Classification	2012-01-31 12:50 PM		Ron	Ryan
	National by Source Classification	2012-01-31 12:45 PM	2012-01-31 12:46 PM	Ron	Ryan
	National by Source Classification	2012-01-31 11:39 AM	2012-01-31 11:46 AM	Madeleine	Strum
	National by Data Category	2012-01-31 10:31 AM	2012-01-31 10:46 AM	Roy	Huntley
	Facility	2012-01-31 09:49 AM	2012-01-31 10:03 AM	Anthony	Ross
Report Type: Facility Data Set: 2008-2008 V2_0 GPR Pollutants: CO, SO2, NOX, VOC, PM25-PRI, PM10-PRI, 7439921 States: MN					
	Facility	2012-01-31 09:49 AM	2012-01-31 10:03 AM	Anthony	Ross
	Facility	2012-01-31 09:48 AM	2012-01-31 10:03 AM	Anthony	Ross
	Facility	2012-01-31 09:48 AM	2012-01-31 10:03 AM	Anthony	Ross
	Facility	2012-01-31 09:47 AM	2012-01-31 09:48 AM	Anthony	Ross
	Facility	2012-01-31 09:46 AM	2012-01-31 09:48 AM	Anthony	Ross

Showing 1 to 10 of 63 entries

First Previous 1 2 3 4 5 Next Last

Done Local intranet 100%

Recap

What will change for 2011 submissions?

- Codes added/retired
 - Control codes adds and retires
 - SCCs added for ERT test reporting
- QA warning checks - fewer
- Warning checks now critical
 - Aircraft/Engine type code for a few SCCs
 - Stack temperature
- The EIS Gateway and Appendix 6 on CHIEF will have final codes by June 1

Web resources

- EIS Users Manual one-pagers
<http://www.epa.gov/ttn/chief/eis/index.html>
 - How to gain access to the Gateway
 - How to change your password
 - How to submit data using the web client
- 2008 NEI/EIS Implementation Plan
<http://www.epa.gov/ttn/chief/net/neip/index.html>

Contacts

- Submittal Issues
 - Sally Dombrowski – dombrowski.sally@epa.gov; 919-541-3269
- Inventory Issues
 - Ron Ryan – ryan.ron@epa.gov, 919-541-4330
 - Madeleine Strum – strum.madeleine@epa.gov, 919-541-2383