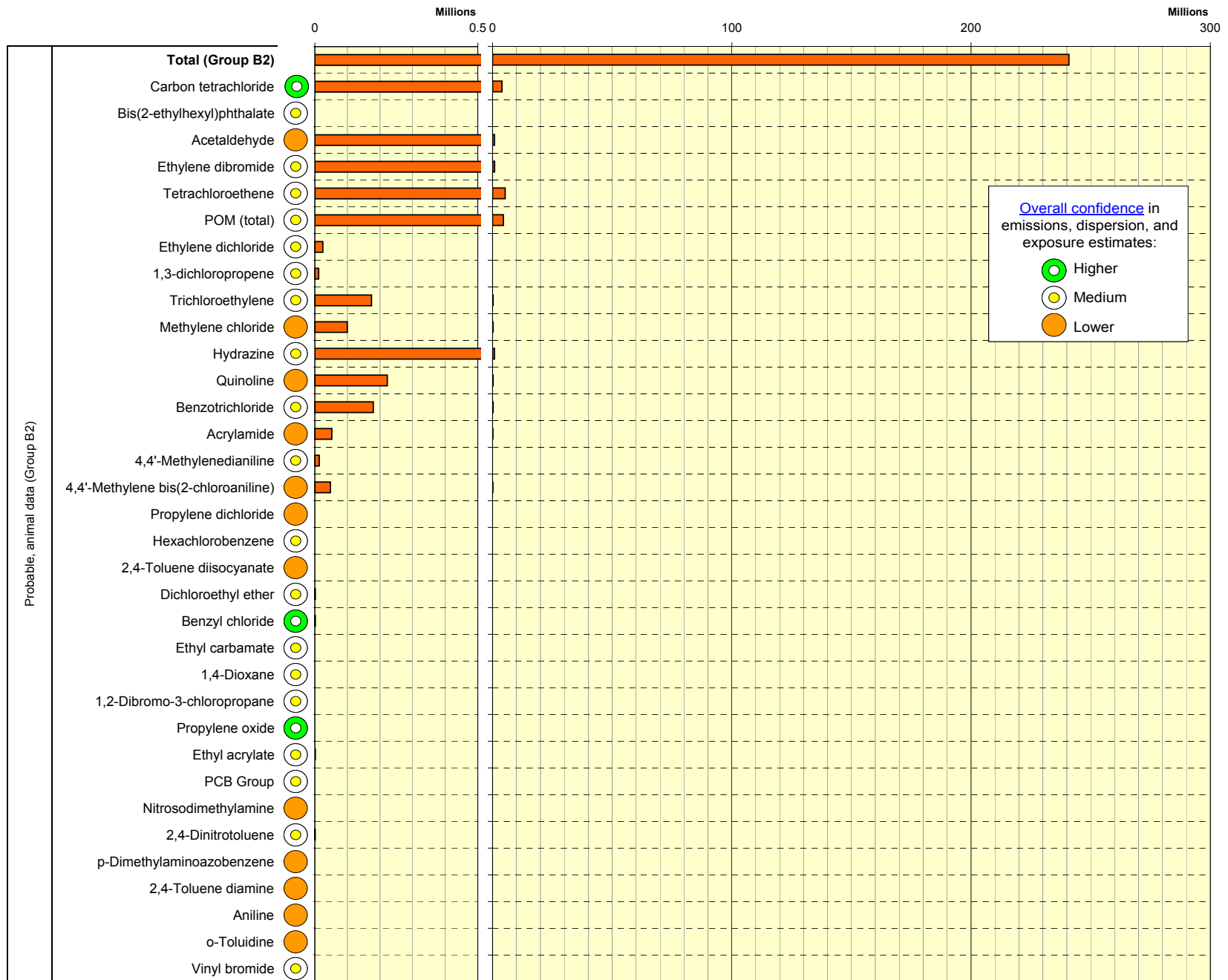


US EPA ARCHIVE DOCUMENT

**Population residing in census tracts for which the 1999 median exposure exceeded a lifetime cancer risk level of 10 in 1 million
(based on all sources combined).**



Results are based on inhalation exposure to outdoor sources only. Although these results assume continuous exposure to 1999 levels of air toxics over a lifetime, current and planned control programs are expected to substantially reduce these exposures and associated cancer risk for some pollutants. Please see additional information about additional limitations on the following page.