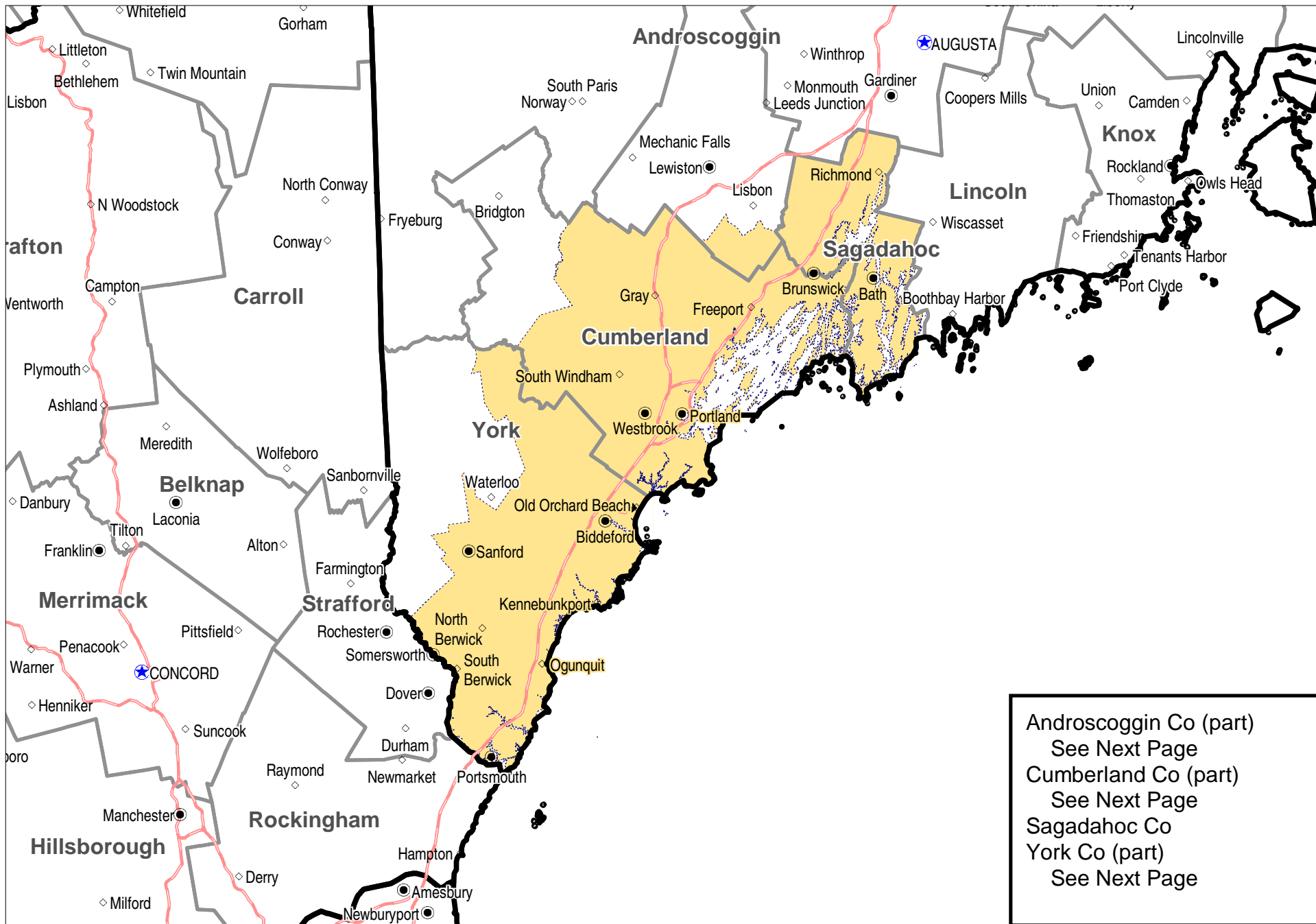


US EPA ARCHIVE DOCUMENT

# Portland, ME 8-hour Ozone Maintenance Area



Boundaries and locations are for illustrative purposes only. This is not a regulatory document.

## Portland, ME 8-hour Ozone Nonattainment Area

Androscoggin Co (part)

(includes only the following town): Durham

Cumberland Co (part)

(includes only the following cities and towns): Brunswick, Cape Elizabeth, Casco, Cumberland, Falmouth, Freeport, Frye Island, Gorham, Gray, Harpswell, Long Island, New Gloucester, North Yarmouth, Portland, Pownal, Raymond, Scarborough, South Portland, Standish, Westbrook, Windham, and Yarmouth

Sagadahoc Co

York Co (part)

(includes only the following cities and towns): Alfred, Arundel, Berwick, Biddeford, Buxton, Dayton, Elliot, Hollis, Kennebunk, Kennebunkport, Kittery, Limington, Lyman, North Berwick,

Sagadahoc Co

York Co (part)

(includes only the following cities and towns): Alfred, Arundel, Berwick, Biddeford, Buxton, Dayton, Elliot, Hollis, Kennebunk, Kennebunkport, Kittery, Limington, Lyman, North Berwick, Ogunquit, Old Orchard Beach, Saco, Sanford, South Berwick, Wells, and York