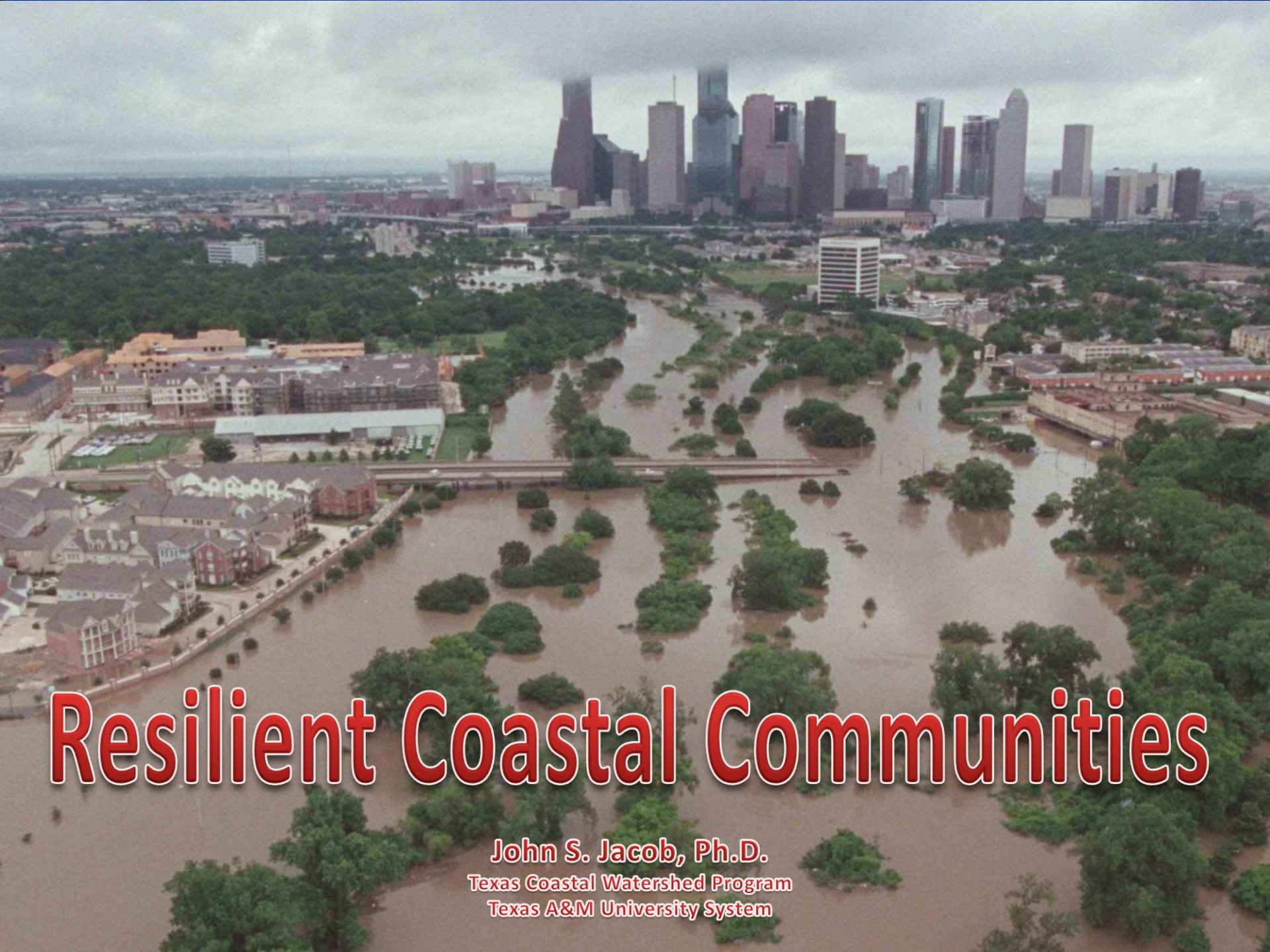
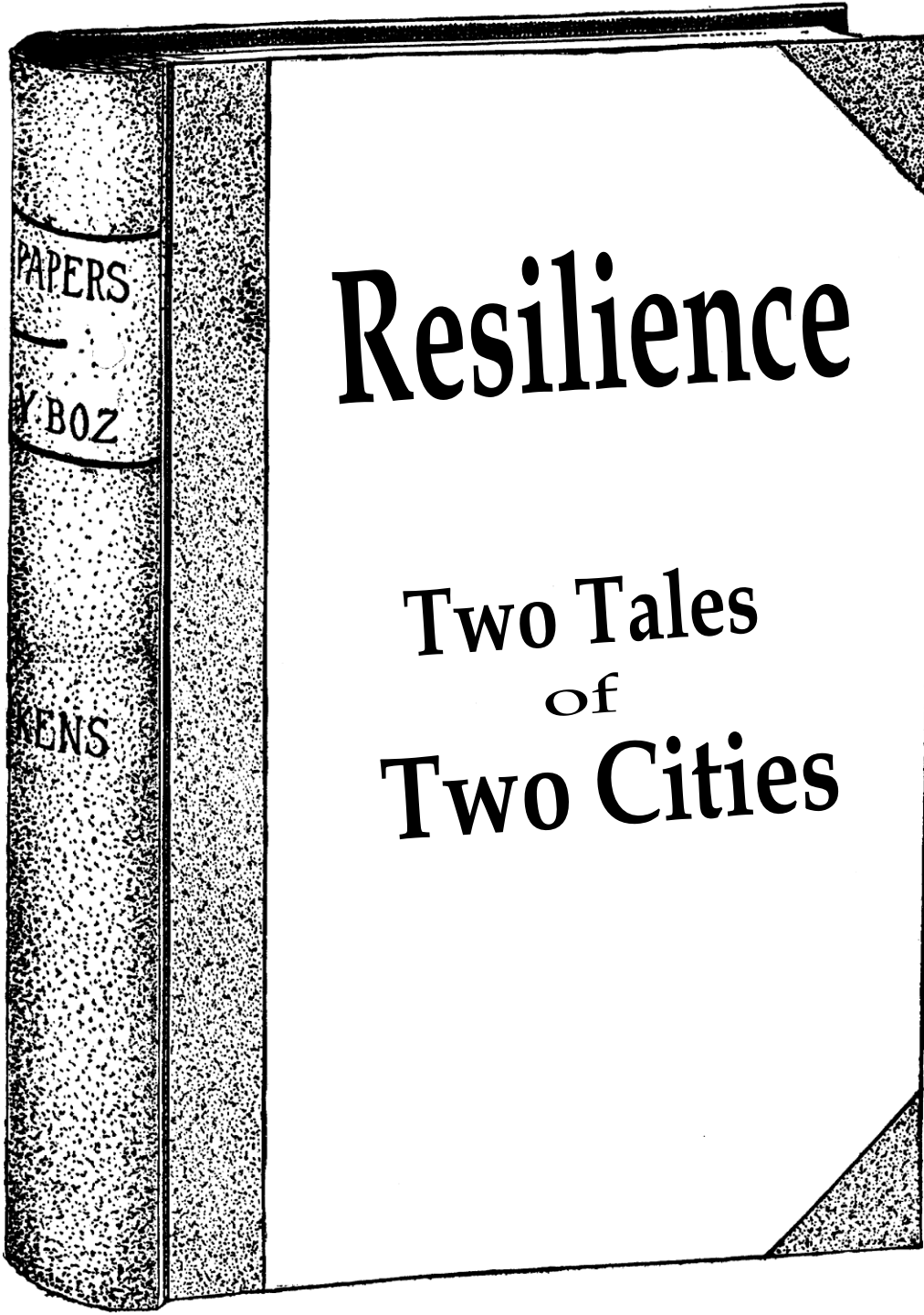


US EPA ARCHIVE DOCUMENT



# Resilient Coastal Communities

John S. Jacob, Ph.D.  
Texas Coastal Watershed Program  
Texas A&M University System



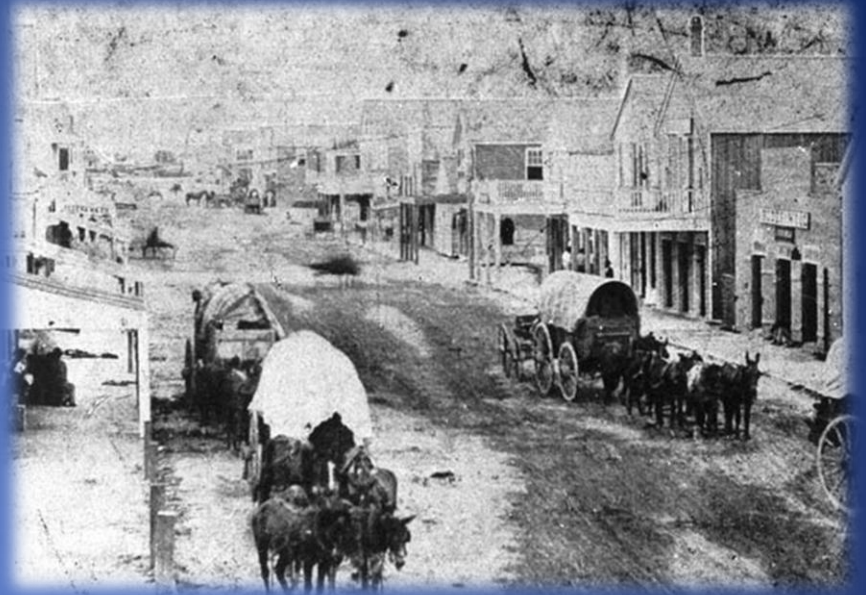
PAPERS

BOZ

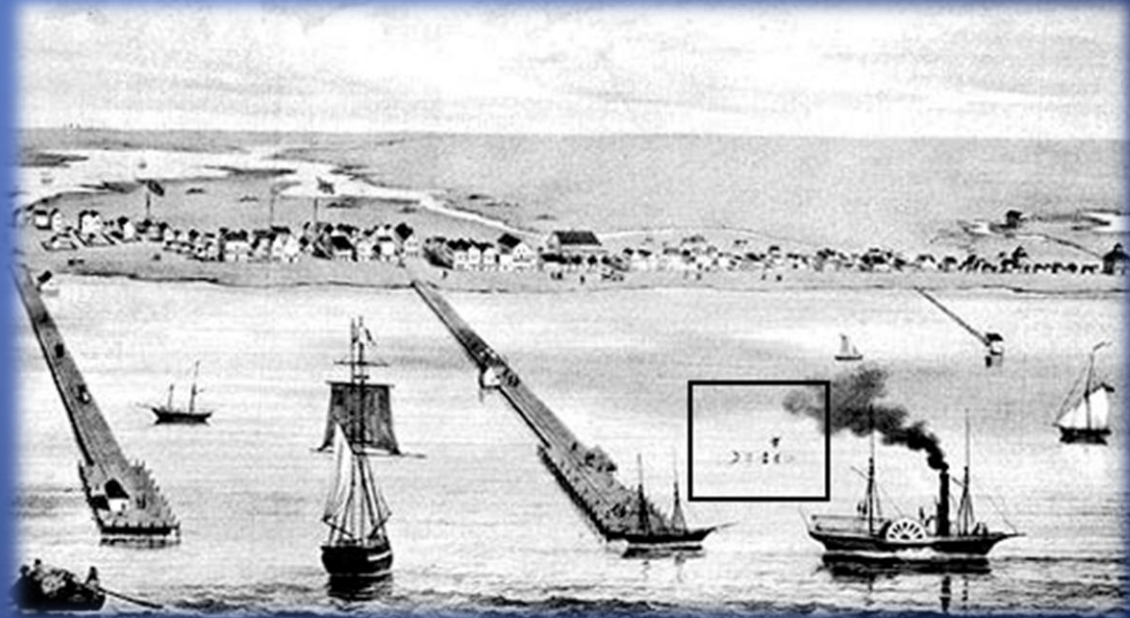
GENTS

# Resilience

Two Tales  
of  
Two Cities



# Indianola, Texas





Jackson

Matagorda

Victoria

316

Indianola Island

Indianola, TX

Refugio

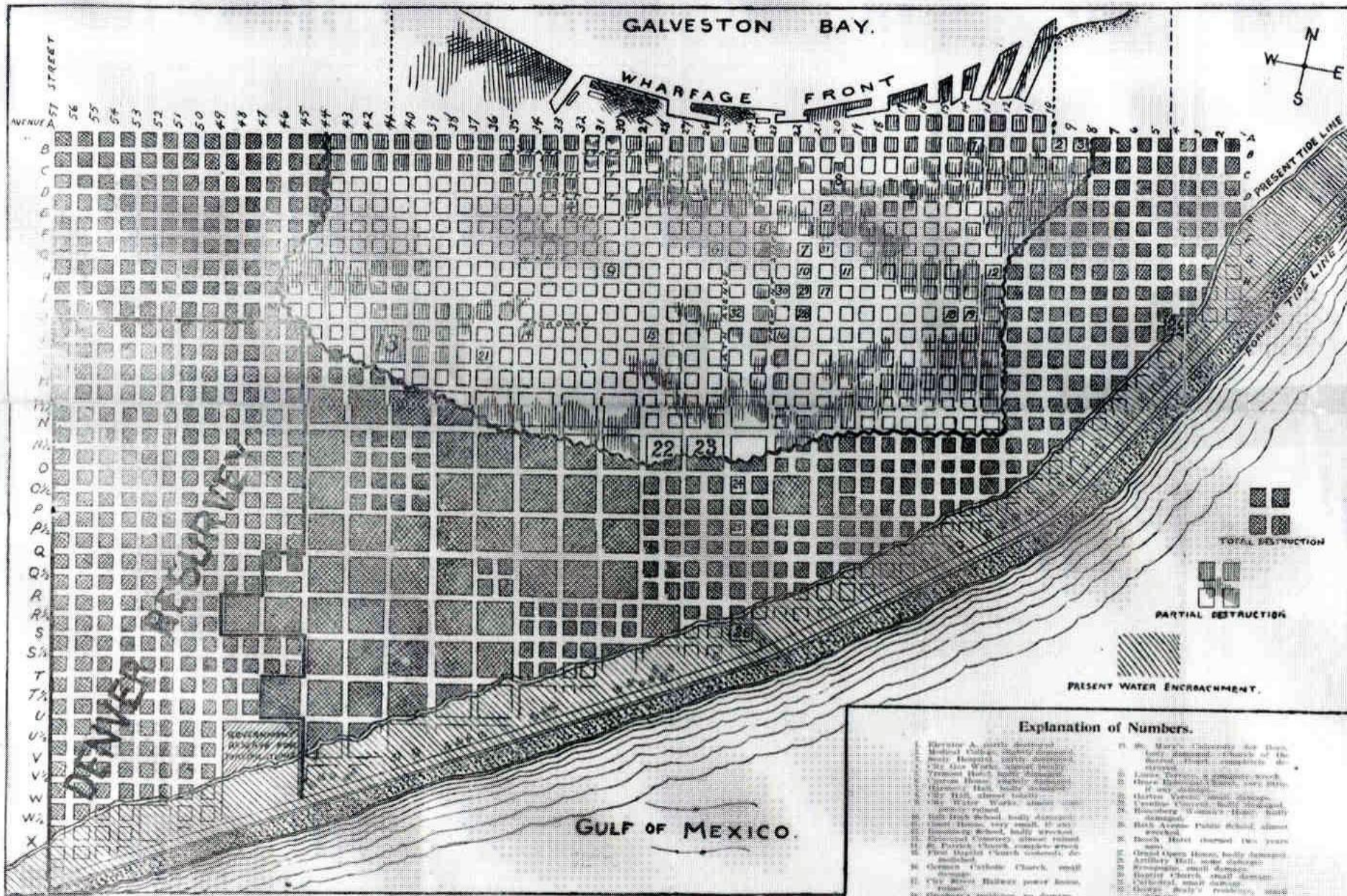




**Galveston, Texas 1900**







**Explanation of Numbers.**

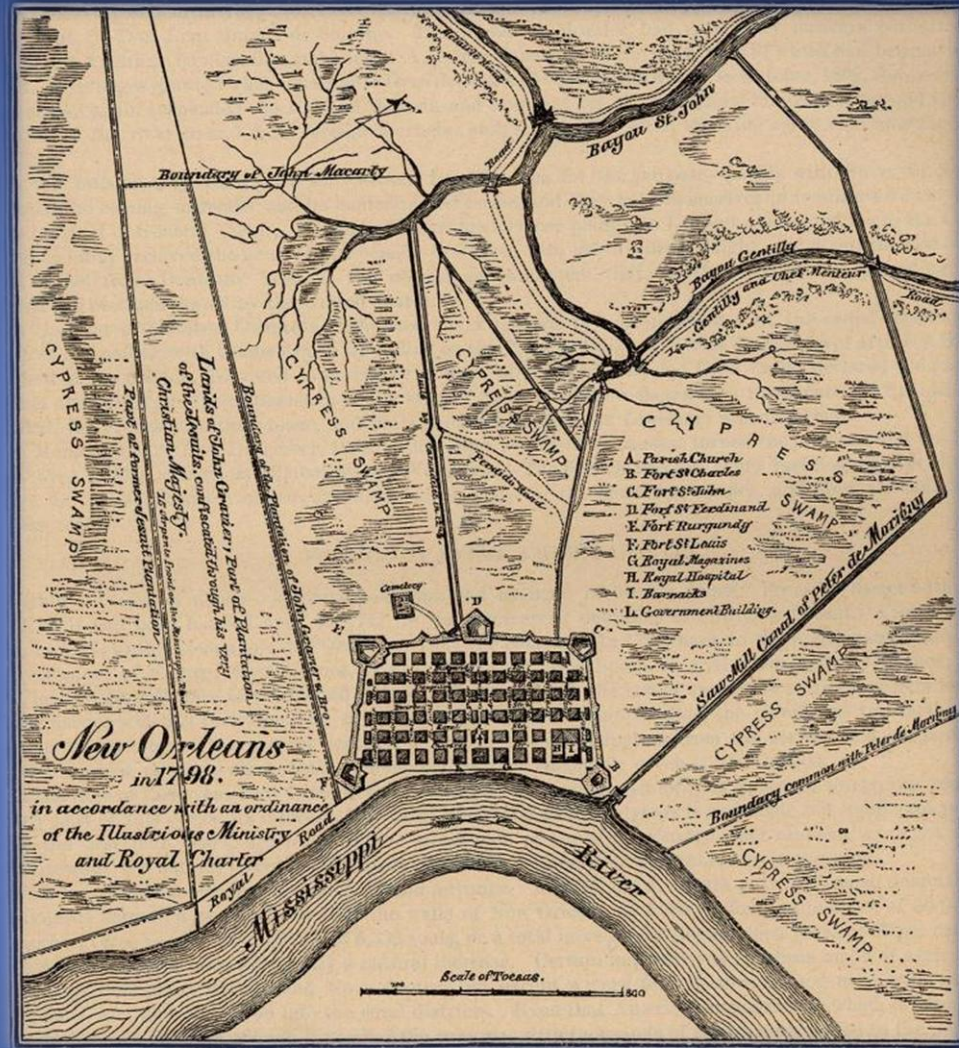
- |  |   |
|--|---|
| 1. Marine A. north destroyed                   | 21. St. Mary's, Catholicity, not destroyed      |
| 2. Medical College, nearly destroyed           | 22. Hotel, almost completely destroyed          |
| 3. City Gas Works, completely destroyed        | 23. Jones Tobacco, a complete wreck             |
| 4. Vernon Hotel, nearly destroyed              | 24. Green Building, almost destroyed            |
| 5. Victoria House, nearly destroyed            | 25. It was destroyed                            |
| 6. Harmon's Hall, nearly destroyed             | 26. Hart's, nearly destroyed                    |
| 7. City Hall, almost totally destroyed         | 27. Central Church, nearly destroyed            |
| 8. City Water Works, almost completely ruined  | 28. Rosenberg Company's Hotel, nearly destroyed |
| 9. City High School, nearly destroyed          | 29. High Avenue Public School, almost wrecked   |
| 10. Court House, very small, it was destroyed  | 30. Beach Hotel (opened two years ago)          |
| 11. Commercial College, nearly wrecked         | 31. Grand Opera House, nearly destroyed         |
| 12. St. Francis Church, almost ruined          | 32. Ambler Hall, some destroyed                 |
| 13. First Baptist Church, completely destroyed | 33. Protestant, small destroyed                 |
| 14. German Catholic Church, small destroyed    | 34. Central Church, small destroyed             |
| 15. City Street Railway power house, ruined    | 35. Victoria, small destroyed                   |
| 16. Grubbe's residence, in damage.             | 36. George Baily's residence, small destroyed   |



# Brownwood, Baytown, Texas







# Bienville's Dilemma

# Developed

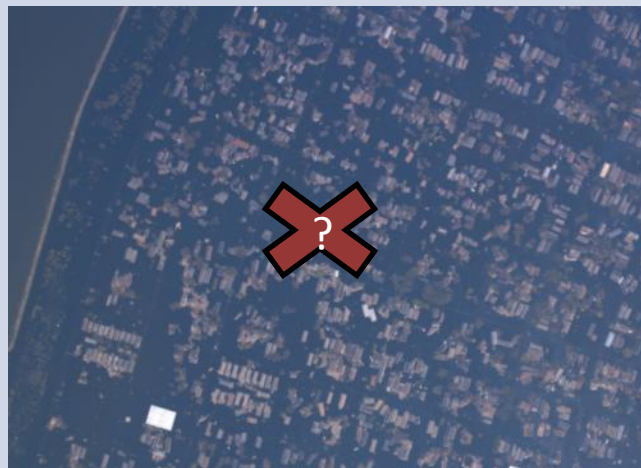
YES

NO

HIGH



LOW



Location Resilience



R. J. MILL 1910

BRADSHAW COUNTY COMMERCE BLDG



**WHAT**



**WHERE**



**HOW**

# Coastal Community Resilience



# We-Table and the Coastal CHARM Model



GIS + CommunityViz + Wii Whiteboard = Participatory Democracy