

US EPA ARCHIVE DOCUMENT

Coastal Alabama



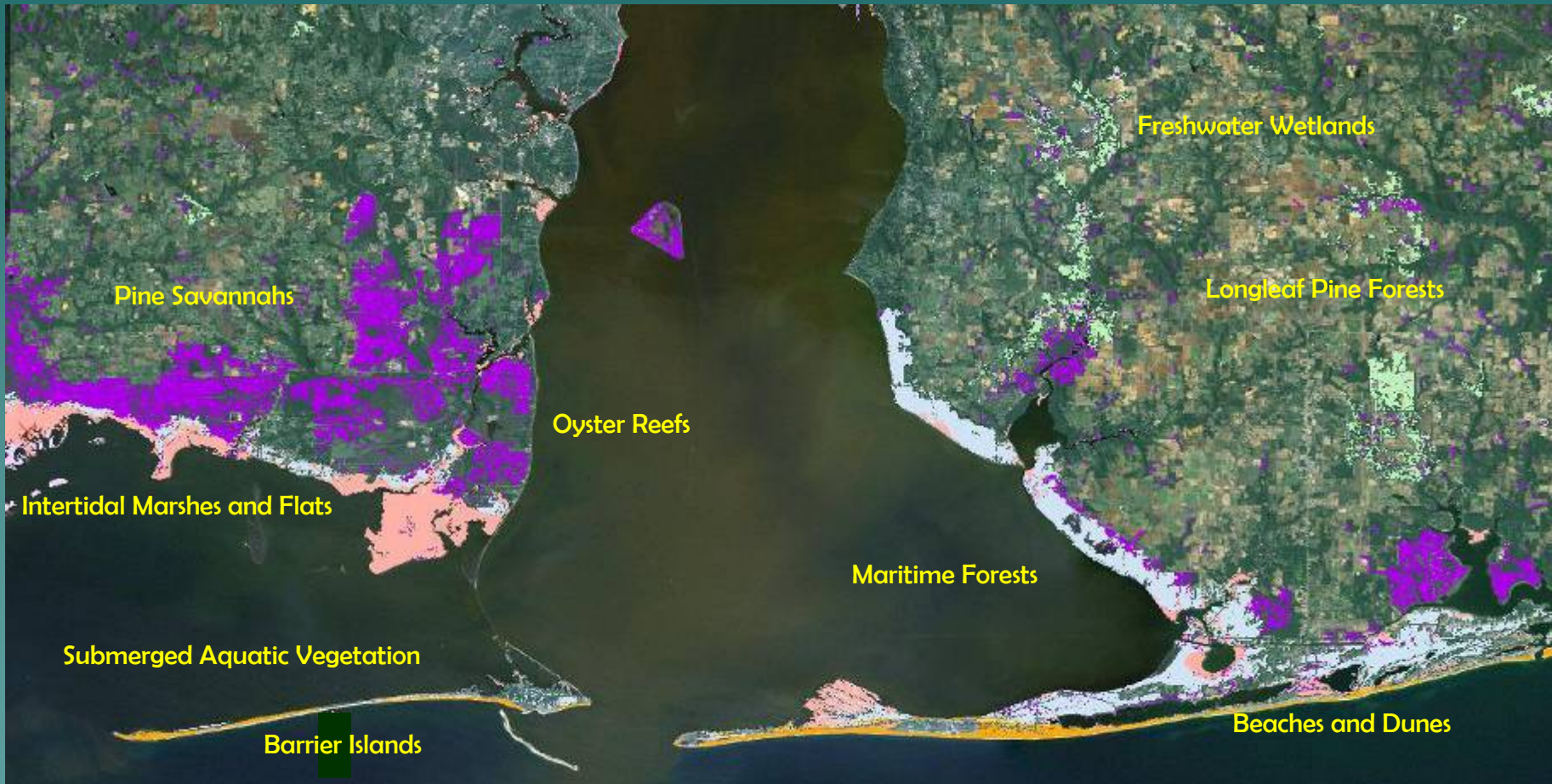
Diverse Ecosystems
Driving Coastal Resilience



May 2011

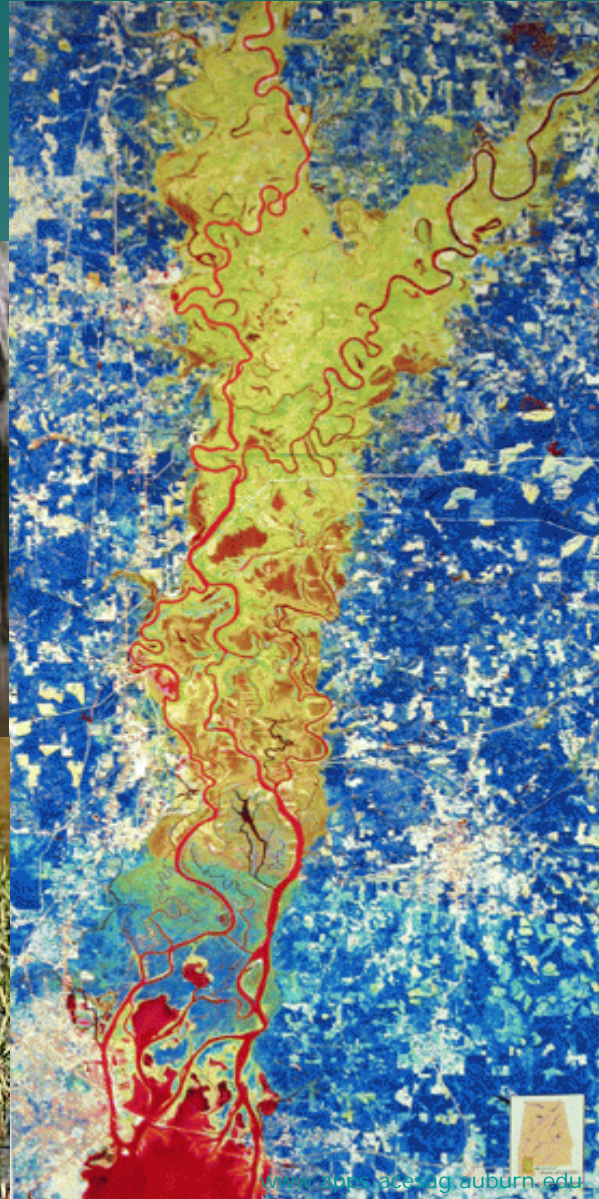


Diverse Ecosystems



Diverse Ecosystem

◆ Mobile-Tensaw Delta



Diverse Ecosystem

◆ Mobile Bay



Diverse Ecosystem

◆ Shorelines – Marsh Habitat



ADCNR Photo



magnoliasprings.com

Diverse Ecosystem

◆ Shorelines – Sandy Beaches



Economy

◆ Port of Mobile

Imports/ Exports: *Chemicals, Coal, Lumber, Iron, Steel, Copper, Cement, Chemicals, Frozen Poultry, Soybeans*



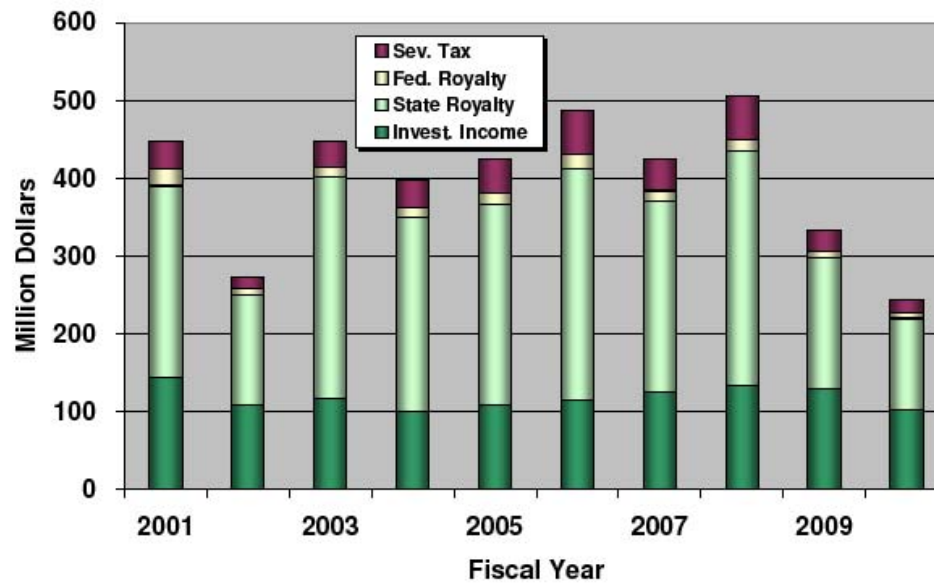
Contributes Over 66,000 Direct and Indirect Jobs

Has an annual \$263+ Million Direct/Indirect Tax Impact

Creates an annual \$7.92+ Billion Total Economic Impact

Economy

Revenues Generated From
Alabama Offshore Production

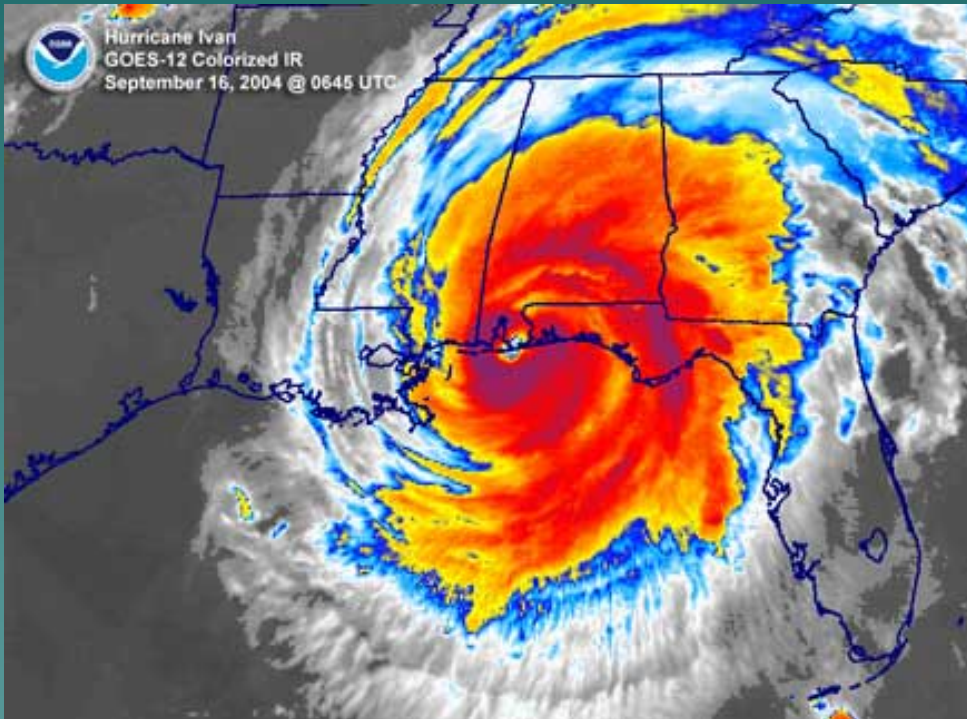


Economy

- ◆ Seafood
 - Shrimp, Blue Crab
 - Seafood Processing



Community Vulnerability



Hurricane Ivan – Category 3
Sept. 16, 2004
Gulf Shores, AL

Community Vulnerability



Storm surge from Hurricane Ivan ranged from 10 – 15 feet along the gulf coast.

Community Vulnerability



Mobile Bay
Causeway

Community Vulnerability



Community Vulnerability

- ◆ 1995 – 2005
 - 7 named hurricanes
 - ◆ Erin - 1995
 - ◆ Opal - 1995
 - ◆ Danny – 1997
 - ◆ Georges – 1998
 - ◆ Ivan – 2004
 - ◆ Dennis – 2005
 - ◆ Katrina - 2005
 - 2 named tropical storms
 - ◆ Hanna – 2002
 - ◆ Isidore - 2002



Ecosystem Concerns

- ◆ Four Overarching Concerns in Coastal Alabama
 - Water Quality
 - Shoreline Stabilization
 - Habitat Protection (wetlands, SAVs)
 - Community Sustainability and Resilience

Ecosystem Concerns

◆ Water Quality

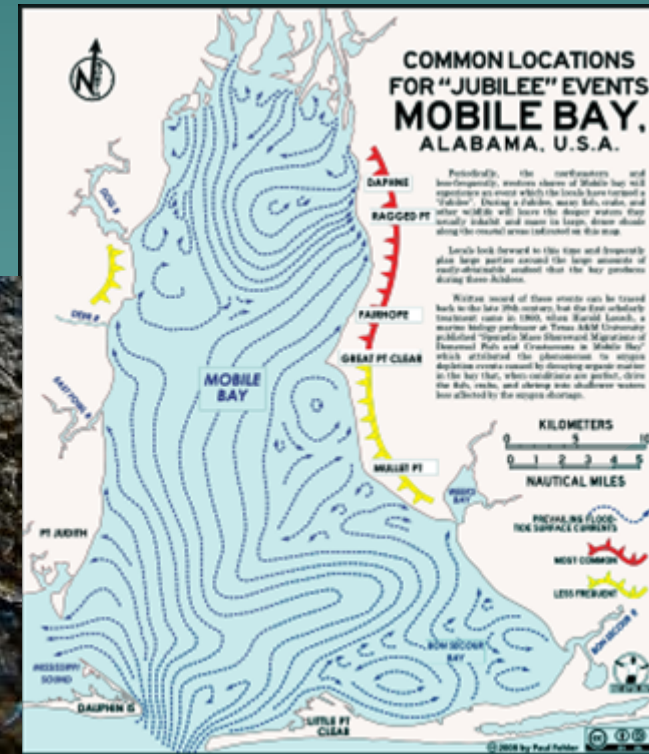
- Sediments
- Pathogens
- Non-Point Pollution
- Watershed Protection



Ecosystem Concerns

◆ Water Quality

- "...Hundreds of live sea crabs and fish... completely covered the beach at [Point Clear](#) and Zundels Sunday morning. A fisherman of experience in explaining the unusual occurrence stated that it was a "**jubilee**"... People who saw the wild scramble of fish and crabs on the sandy beach say they won't soon forget the sight.[\[5\]](#)"
—**Mobile Daily Register**, July 29, 1912



Ecosystem Concerns

- ◆ **Shoreline Stabilization**
 - Salt Marshes
 - Beach and Bay Shorelines



ADCNR Photo



ADCNR Photo

Ecosystem Concerns

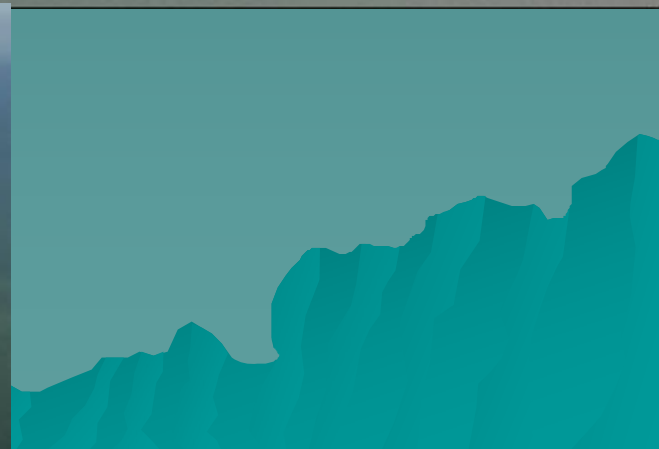
◆ Shoreline Stabilization – Gulf Beaches



www.nytimes.com

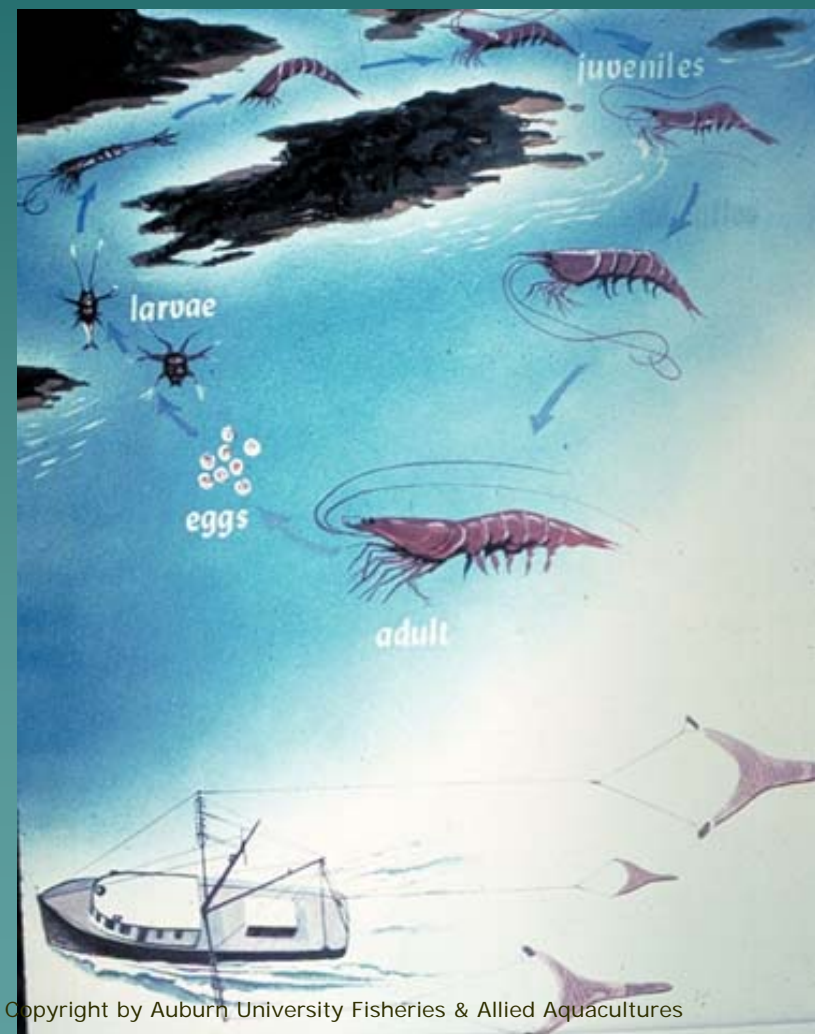


www.blog.al.com



Ecosystem Concerns

- ◆ **Wetlands & Submerged Aquatic Vegetation**
 - Critical nursery habitats for finfish and shellfish.
 - The majority of recreationally and commercially important species depend on these habitats.



Copyright by Auburn University Fisheries & Allied Aquacultures



Ecosystem Concerns

- ◆ **Sustainable, Resilient Communities**

Recognition ecosystems and economy are forever linked

- ◆ Smart growth, natural resource conservation
- ◆ Promote ecotourism & sustainable use practices
- ◆ Promote economic diversity



Community Experiences

- ◆ City of Gulf Shores
- ◆ Honorable Robert Craft, Mayor



Community Experiences

- ◆ Gulf Shores and Orange Beach, Alabama
 - Coastal Baldwin County profile
 - Role of Environment in the coastal community
 - Economics
 - Human Impact



Community Experiences

- ◆ Gulf Shores and Orange Beach, Alabama
 - Coastal Baldwin County



Community Experiences

- ◆ Gulf Shores and Orange Beach, Alabama
 - Role of environment in community



Image courtesy of Philippe Cousteau

Community Experiences

- ◆ Gulf Shores and Orange Beach, Alabama
 - Economics



620,000 – annual # of tourism and recreation jobs in Gulf Coast Region

\$9 Billion- amount of wages paid each year to tourism and recreation workers in Gulf Region

33%, or **\$2.97 Billion** of Alabama's \$9 Billion travel industry occurs in Mobile and Baldwin Counties

Community Experiences

- ◆ Gulf Shores and Orange Beach, Alabama
– Human Impact



Community Experiences

- ◆ Town of Dauphin Island, Alabama
- ◆ Honorable Jeffrey C. Collier, Mayor

Community Experiences

- ◆ Dauphin Island and Bayou La Batre, Alabama
 - Shoreline Stabilization
 - Barrier Islands
 - Fisheries
 - Sustainability, Resilience

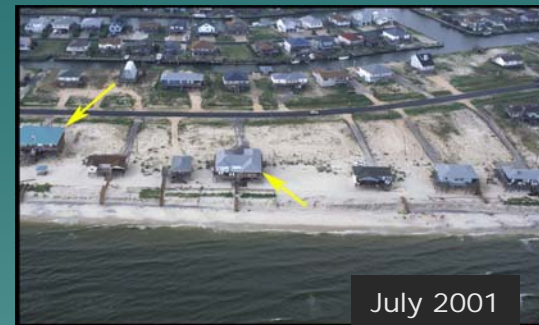


Community Experiences

◆ Dauphin Island and Bayou La Batre, Alabama

– Shoreline Stabilization

- ◆ Significant sand losses
- ◆ Re-nourish to historical levels



July 2001



Sept. 2004



August 2005

Community Experiences

- ◆ Dauphin Island and Bayou La Batre, Alabama
 - Barrier Islands
 - ◆ Serve as mainland buffers
 - ◆ Protect mainland habitats



Community Experiences



Dauphin Island is Alabama's barrier island. It serves to protect the marshes of Mississippi Sound.

Community Experiences

- ◆ Dauphin Island and Bayou La Batre, Alabama
 - Barrier Islands
 - ◆ Support productive marine habitats
 - ◆ Support local economies



Community Experiences

- ◆ Dauphin Island and Bayou La Batre, Alabama
 - Sustainability and Resilience are also important to Dauphin Island



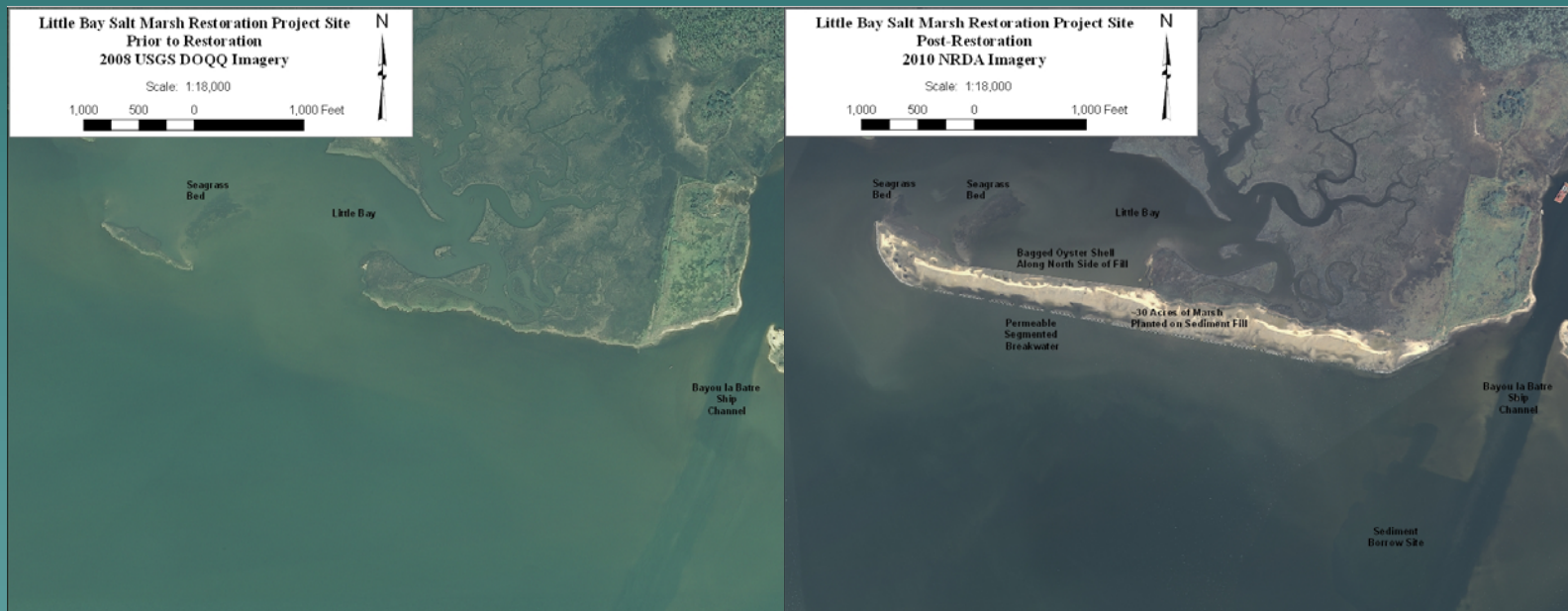
Moving Forward

◆ Alabama's Focus



Moving Forward

◆ Restore coastal Alabama



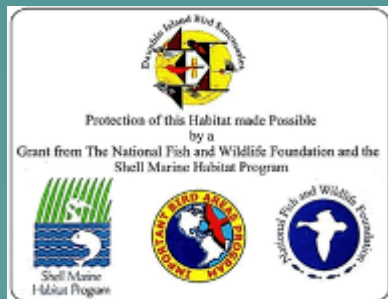
Moving Forward

- ◆ Build on existing partnerships among coastal stakeholders
 - Create synergies
 - Leverage resources



Moving Forward

- ◆ Support community resilience efforts
- ◆ Highlight the relationship between a healthy ecosystem and a healthy economy.



outdoorfamilyasa.blogspot.com



www.city-data.com

Moving Forward

- ◆ We are most effective and will have the most success if we work together in a partnership to address these important issues.

